

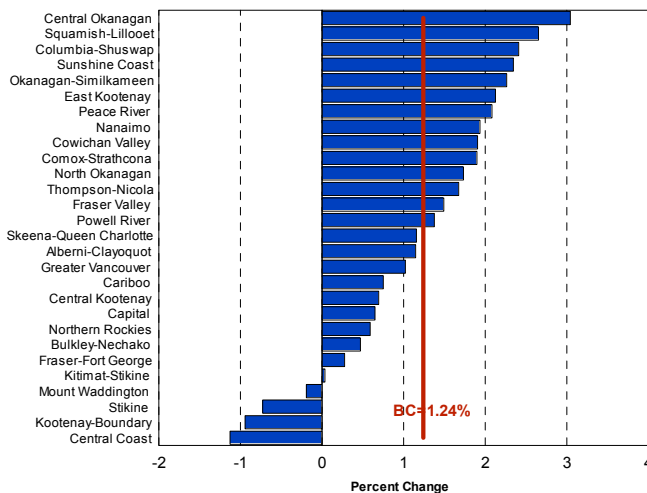
Business Indicators ♦ December 2006

Municipal Population Estimates, 2006

The Province

Between July 1st 2005 and June 30th 2006 British Columbia's population grew by 1.24 per cent. This resulted in an increase of 52,619 individuals from the 2005 population of 4,257,833 to an end of period population level of 4,310,452 persons. This growth rate was above the Canada figure of 1.0 per cent. Over the same period Alberta had the highest growth rate of 2.99 per cent, followed by Nunavut at 2.47 per cent. BC's growth rate was higher than that of Ontario (1.02%) for this 2005 -2006 period.

The majority of the population growth for British Columbia was a result of strong international immigration. Between July 1st 2005 and July 1st 2006 BC received 37,942 individuals through net international migration. BC gained a further 10,898 persons through natural increases in population (40,926 births minus 30,028 deaths). Finally, net interprovincial migration accounted for an increase of 3,779 individuals.



Regional Districts

Twenty-four of British Columbia's regional districts showed positive population growth between 2005 and 2006. Central Okanagan had the highest growth rate over this period at 3.04 per cent, gaining a total of 5,109 individuals. Greater Vancouver had the highest gains in absolute terms as 22,308 more individuals called this Regional District home over this period.

Regional District	%Change	Growth	2006 Pop
Greater Vancouver	1.02	22,038	2,180,737
Capital	0.65	2,285	353,710
Fraser Valley	1.49	3,956	268,972
Central Okanagan	3.04	5,109	173,026
Nanaimo	1.93	2,729	143,791
Thompson-Nicola	1.67	2,156	130,933
Comox-Strathcona	1.90	1,999	107,312
Fraser-Fort George	0.28	280	101,881
Okanagan-Similkameen	2.26	1,878	84,914
North Okanagan	1.73	1,395	81,888
Cowichan Valley	1.91	1,502	80,295
Cariboo	0.75	528	70,849
Peace River	2.08	1,311	64,272
East Kootenay	2.13	1,315	63,169
Central Kootenay	0.69	418	60,651
Columbia-Shuswap	2.41	1,282	54,520
Bulkley-Nechako	0.47	207	44,147
Kitimat-Stikine	0.03	15	42,927
Squamish-Lillooet	2.65	975	37,750
Alberni-Clayoquot	1.15	375	33,063
Kootenay-Boundary	-0.94	-313	32,864
Sunshine Coast	2.34	670	29,262
Skeena-Queen Charlotte	1.16	260	22,722
Powell River	1.38	290	21,364
Mount Waddington	-0.19	-26	13,562
Northern Rockies	0.59	39	6,644
Central Coast	-1.13	-44	3,860
Stikine	-0.73	-10	1,367
British Columbia	1.24	52,619	4,310,452

Fourteen regional districts had higher population growth than BC, including three of the top five most populated areas. Greater Vancouver and the Capital regional

districts had below average growth rates, but accounted for the largest absolute increase in population. Fraser Valley, Central Okanagan and Nanaimo, the third through fifth most populated regions, had above BC average growth rates.

Only four regional districts showed negative population growth between 2005 and 2006. Central Coast showed the highest percentage drop in their population at -1.13 per cent growth. This resulted in an outflow of 44 people from this area. Kootenay-Boundary Regional District had the highest absolute drop in population of 313 persons. Three of the areas showing negative growth rates are also those areas with the lowest population bases.

Municipalities

Of British Columbia's 157 municipalities for which population was estimated, 118 had positive population growth between 2005 and 2006. 38 municipalities had negative population growth and one showed no change. The City of Surrey had the largest absolute gain in population at 6,486 individuals. The City of Vancouver had the second largest gain of 4,700 people.

Municipality	2005-06 Pop Change		2006 Population
	%	Persons	
Surrey, C	1.64	6,486	402,150
Vancouver, C	0.81	4,700	587,891
Kelowna, C	3.01	3,298	112,775
Langley, Township DM	2.50	2,424	99,537
Chilliwack, C	2.99	2,108	72,621
Maple Ridge, DM	2.76	2,035	75,783
Penticton, C	4.88	1,612	34,669
Port Moody, C	5.17	1,481	30,120
Kamloops, C	1.65	1,361	84,064
Nanaimo, C	1.67	1,333	80,949

In percentage terms, the villages of Radium Hot Springs (13.3%), Clinton (12.9%), Valemont (11%) and Tumbler Ridge District Municipality (6.8%) had the highest population growth rates.

Municipality	2005-06 Pop Change		2006 Population
	%	Persons	
Oak Bay, DM	-1.38	-252	18,059
Trail, C	-2.46	-195	7,744
White Rock, C	-0.78	-154	19,545
Coquitlam, C	-0.11	-132	119,319
Kitimat, DM	-0.72	-76	10,510
Rossland, C	-1.91	-71	3,653
Central Saanich, DM	-0.30	-51	16,768
Fruitvale, VL	-2.11	-44	2,039
Grand Forks, C	-0.98	-41	4,159
New Hazelton, DM	-3.83	-29	729

The District Municipality of Oak Bay and the City of Trail lost the largest amount of population over the 2005 to 2006 period. Oak Bay had 252 less estimated residents at the end of the period and Trail had 195 less. Those municipalities experiencing the largest loss in percentage terms were New Hazelton (-3.82%), Port Edwards (-3.67%) and Stewart (-3.59%). The total population of each of these three areas, however, was less than 1,000 individuals. Of the 38 municipalities that lost population, 29 had populations below 5,000.

Municipal estimates are calculated by the Population Section of BC Stats through a regional estimation model that has been developed and refined over the past 25 years. This model, which uses indicators of population change such as residential electrical connections and telephone line location information, has enabled BC Stats to produce relatively accurate population estimates without the high cost of conducting a census.

Knowledge of population growth and where it occurs is vital to the planning process. For this reason the Municipal and Regional District Estimates are an important tool for provincial and local governments in assessing current and future community needs.

The population estimates for 1996 to 2006 (as well as the estimates for 1976-1995) are available on the BC Stats web site:
<http://www.bcstats.gov.bc.ca>

British Columbia Municipal and Regional District Population Estimates

Name	2001	2002	2003	2004	2005	2006	2005-06 % Chg.
Alberni-Clayoquot	31,664	31,686	31,878	32,312	32,688	33,063	1.15
Port Alberni (C) *	18,516	18,456	18,484	18,610	18,686	18,790	0.56
Tofino (DM)	1,530	1,565	1,675	1,716	1,846	1,906	3.25
Ucluellet (DM)	1,627	1,634	1,675	1,852	1,899	1,978	4.16
Bulkley-Nechako	42,635	42,647	42,647	43,940	44,147	44,147	0.47
Burns Lake (VL)	2,027	2,022	2,017	2,035	2,018	2,012	-0.30
Fort St. James (DM)	2,011	1,989	1,991	2,004	2,003	1,976	-1.35
Fraser Lake (VL)	1,323	1,316	1,284	1,369	1,366	1,354	-0.88
Granisle (VL)	368	366	354	367	353	352	-0.28
Houston (DM)	3,733	3,613	3,600	3,849	3,732	3,796	1.71
Smithers (T)	5,651	5,675	5,589	5,652	5,508	5,575	1.22
Telkwa (VL) *	1,431	1,423	1,430	1,421	1,439	1,443	0.28
Vanderhoof (DM)	4,592	4,592	4,579	4,662	4,727	4,799	1.52
Capital	340,030	342,148	344,818	347,159	351,425	353,710	0.65
Central Saanich (DM)	16,018	16,153	16,312	16,495	16,819	16,768	-0.30
Colwood (C)	14,345	14,520	14,637	14,821	15,122	15,470	2.30
Esquimalt (DM)	16,834	16,913	16,945	17,078	17,188	17,407	1.27
Highlands (DM)	1,747	1,772	1,798	1,967	2,114	2,130	0.76
Langford (DM)	19,660	20,039	20,516	20,879	21,616	22,229	2.84
Metchosin (DM)	5,070	5,105	5,218	5,258	5,300	5,312	0.23
North Saanich (DM)	10,890	10,959	11,072	11,132	11,273	11,258	-0.13
Oak Bay (DM)	18,573	18,535	18,456	18,406	18,311	18,059	-1.38
Saanich (DM)	108,179	108,620	109,598	109,873	110,382	110,737	0.32
Sidney (T)	11,404	11,420	11,528	11,525	11,861	11,849	-0.10
Sooke (DM) *	9,116	9,245	9,432	9,756	10,116	10,436	3.16
Victoria (C)	77,362	77,472	77,433	77,769	78,296	78,659	0.46
View Royal (T)	7,597	7,780	7,907	7,970	8,251	8,375	1.45
Cariboo	68,510	68,472	68,600	69,837	70,321	70,849	0.75
100 Mile House (DM)	1,815	1,819	1,814	1,828	1,826	1,829	0.16
Quesnel (C) *	10,481	10,407	10,337	10,445	10,485	10,561	0.72
Wells (DM) *	245	246	241	262	248	246	-0.81
Williams Lake (C) *	11,639	11,625	11,578	11,865	11,871	11,961	0.76
Central Coast	3,943	3,952	3,902	3,866	3,904	3,860	-1.13
Central Kootenay	59,506	59,731	60,209	59,876	60,233	60,651	0.69
Castlegar (C)	7,307	7,304	7,266	7,774	7,820	7,863	0.55
Creston (T)	5,004	4,995	5,050	5,053	5,097	5,201	2.04
Kaslo (VL)	1,077	1,069	1,068	1,071	1,075	1,087	1.12
Nakusp (VL)	1,772	1,783	1,789	1,789	1,779	1,800	1.18
Nelson (C)	9,703	9,641	9,778	9,810	9,796	9,923	1.30
New Denver (VL)	561	557	561	550	549	556	1.28
Salmo (VL)	1,169	1,178	1,157	1,140	1,133	1,129	-0.35
Silverton (VL)	232	228	235	231	230	224	-2.61
Slocan (VL)	351	349	363	361	359	353	-1.67
Central Okanagan	154,193	156,925	160,720	162,988	167,917	173,026	3.04
Kelowna (C)	100,495	102,294	104,837	105,902	109,477	112,775	3.01
Lake Country (DM)	9,672	9,743	9,919	10,091	10,366	10,668	2.91
Peasachand (DM)	4,857	4,986	5,053	5,090	5,230	5,369	2.66
Columbia-Shuswap	50,321	50,843	51,306	52,367	53,238	54,520	2.41
Golden (T)	4,195	4,299	4,440	4,340	4,398	4,498	2.27
Revelstoke (C) *	7,827	7,913	7,888	7,932	7,963	8,029	0.83
Salmon Arm (DM)	15,873	15,921	16,199	16,510	16,798	17,150	2.10
Sicamous (DM)	2,839	2,889	2,903	3,022	3,043	3,192	4.90
Comox-Strathcona	100,325	100,820	101,953	103,268	105,313	107,312	1.90
Campbell River (DM)	29,700	29,683	30,023	30,250	30,806	31,444	2.07
Comox (T) *	11,660	11,828	12,118	12,426	12,833	13,008	1.36
Courtenay (C) *	19,103	19,347	19,592	19,660	19,771	20,102	1.67
Cumberland (VL)	2,768	2,731	2,785	2,683	2,670	2,683	0.49
Gold River (VL)	1,418	1,368	1,358	1,436	1,356	1,389	2.43
Sayward (VL)	396	398	403	404	407	410	0.74
Tahsis (VL)	626	584	567	577	577	562	-2.60
Zeballos (VL)	234	227	232	232	228	231	1.32
Cowichan Valley	75,139	75,668	76,565	77,545	78,793	80,295	1.91
Duncan (C)	4,903	4,884	4,884	4,884	4,884	5,032	2.74
Ladysmith (T) *	6,874	6,954	7,067	7,130	7,291	7,460	2.32
Lake Cowichan (T)	2,950	2,977	2,967	2,986	3,029	3,118	2.94
North Cowichan (DM)	27,290	27,519	27,742	28,140	28,516	29,118	2.11
East Kootenay	58,747	59,416	60,146	60,958	61,854	63,169	2.13
Canal Flats (VL) ††	-	-	-	673	680	700	2.94
Cranbrook (C) *	19,281	19,587	19,592	19,660	19,771	20,102	1.67
Elkford (DM)	2,702	2,698	2,707	2,683	2,670	2,683	0.49
Fernie (C)	4,812	4,898	4,808	5,054	5,126	5,168	0.82
Invermere (DM) *	2,983	3,017	3,126	3,149	3,256	3,470	6.57
Kimberley (C)	6,767	6,774	6,802	6,946	7,048	7,147	1.40
Radium Hot Springs (VL)	608	643	700	749	813	921	13.28
Sparwood (DM)	3,978	4,007	4,008	3,998	3,972	4,013	1.03
Fraser Valley	247,916	251,151	254,276	261,171	265,016	268,972	1.49
Abbotsford (C)	120,500	122,566	127,192	128,088	128,940	128,940	0.67
Chilliwack (C)	65,671	66,327	67,530	69,193	70,513	72,821	2.99
Harrison Hot Springs (VL)	1,402	1,451	1,508	1,547	1,595	1,609	0.88
Hope (DM)	6,455	6,473	6,519	6,575	6,590	6,667	1.17
Kent (DM)	5,141	5,187	5,278	5,525	5,679	5,756	1.36
Mission (DM)	32,638	32,876	33,344	34,061	34,738	35,262	1.51
Mackenzie (DM)	5,433	5,437	5,389	5,458	5,453	5,452	-0.02
McBride (VL)	742	733	743	743	752	745	-0.93
Prince George (C)	75,568	75,286	76,643	77,827	77,151	77,343	0.25
Valmound (VL) *	1,247	1,265	1,249	1,247	1,250	1,388	11.04
Greater Vancouver	2,073,662	2,095,092	2,114,633	2,132,260	2,158,699	2,180,737	1.02
Amore (VL)	1,403	1,443	1,517	1,553	1,673	1,728	3.29
Belcarra (VL)	712	720	726	715	722	727	0.69
Bowen Island (IM) *	3,085	3,166	3,288	3,353	3,424	3,501	2.25
Burnaby (C)	202,419	202,478	202,814	203,244	204,551	205,477	0.45
Coquitlam (C)	117,814	119,380	120,083	119,159	119,451	119,319	-0.11
Delta (DM)	101,178	101,481	101,948	102,114	102,642	102,939	0.29
Langley (C)	24,673	24,685	24,924	24,982	25,712	25,789	0.30
Langley, Township of (DM)	90,685	91,146	92,609	94,776	97,113	99,537	2.50
Lions Bay (VL)	1,439	1,429	1,438	1,421	1,421	1,418	-0.21
Maple Ridge (DM)	65,922	67,777	69,438	71,037	73,748	75,783	2.76
New Westminster (C)	57,044	57,241	57,924	57,892	57,572	57,645	0.13
North Vancouver (DM)	85,905	86,138	87,014	86,868	87,072	87,518	0.51
North Vancouver (C)	46,236	46,977	46,496	46,831	48,037	49,248	2.52
Pitt Meadows (DM)	15,311	15,645	15,716	16,143	16,780	17,532	4.48
Port Coquitlam (C)	53,497	54,841	55,164	55,525	55,666	55,712	0.08
Port Moody (C)	24,854	25,274	25,884	26,849	28,639	30,120	5.17
Richmond (C)	171,517	172,547	173,629	174,364	175,791	176,599	0.46
Surrey (C)	363,004	372,581	379,560	387,162	395,664	402,150	1.64
Vancouver (C)	589,473	578,089	576,232	579,717	583,191	587,891	0.81
West Vancouver (DM)	43,229	43,299	43,454	43,356	44,143	44,272	0.29
White Rock (C)	19,047	19,153	19,056	19,370	19,699	19,545	-0.78

