

Southern Highways Program 2007 to 2011



August 2007

Paving the Way Towards a Sustainable Future

Ontario's economy and our quality of life depend on having a transportation system that's safe, efficient and reliable. Ontario is the economic engine of Canada and the third-largest financial centre in North America. The province's transportation infrastructure is the backbone of the economy, with \$1.2 trillion worth of goods moving along our highways and trade corridors every year.

Maintaining and improving our transportation infrastructure will reduce traffic congestion, improve road safety and keep our highways, roads and bridges in a good state of repair.

This year the Ontario government is investing over \$1.7 billion to repair or expand highways, roads and bridges across the province. This investment will support growing urban centres, rural communities and help businesses compete in the global marketplace.

Ontario is promoting sustainability in all future plans to tackle congestion, accommodate growth and keep goods and people moving. A sustainable transportation system is one that recognizes and supports our current needs but also protects our natural resources.

The decisions we make today will affect future generations. Which is why we must plan and use our highways wisely, encourage people to use public transit and explore alternative fuels and technology to reduce emissions and protect the environment.

By balancing social, economic and environmental considerations, the Ontario government will work to ensure a safe, prosperous and environmentally responsible future for all those who live and do business in Ontario.

Southern Highways Program

Last year, the Ontario government announced the Southern Ontario Highways Program — a five-year, \$3.4-billion investment in highway construction. This program provided Ontarians with a comprehensive, multi-year picture of highway investments. It set real goals and targets and identified necessary resources.

The Southern Ontario Highways Program falls under the government's broader infrastructure investment plan, called *ReNew Ontario*, announced in May 2005. *ReNew Ontario* is a \$30-billion plan to strengthen Ontario's economy and communities.

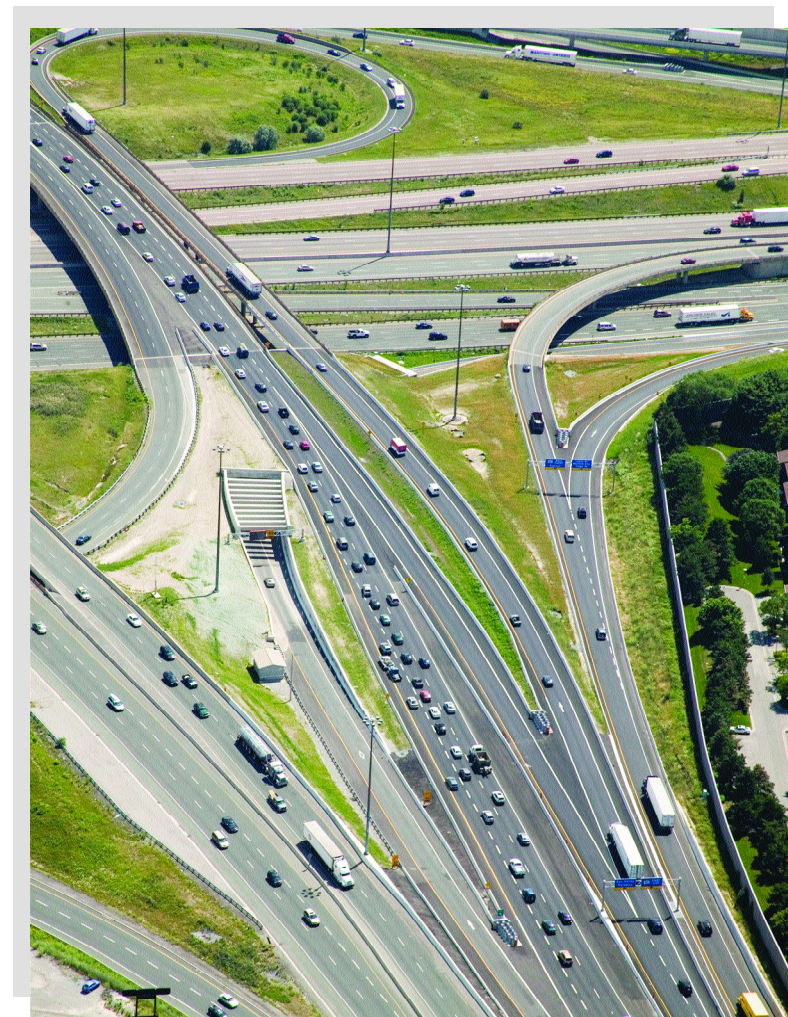
This year, through the Southern Highways Program, the Ontario government will invest a record \$899 million to repair or expand provincial highways and bridges in southern Ontario.

This report lists the specific projects that will occur this year including 63 new projects and 37 projects already underway. It also provides a long-term outlook by listing projects planned through 2011.

The Southern Highways Program is published annually to provide a clear understanding of where and how tax dollars are being spent. It is also one more way that the government is delivering on its promise to Ontarians to be accountable and transparent in the way it conducts business.

By investing in transportation infrastructure, the Ontario government is making roads safer, boosting economic growth, creating jobs and keeping people and goods moving. We will continue to do our part and to pursue every opportunity to discuss new funding partnerships with the federal government, municipalities and private partners.

By working together, we will create a highway system capable of supporting economic growth and prosperity across Ontario for decades to come.



Highway 401/404 Interchange, Toronto

Part I: Accomplishments 2006

2006 Summary of Accomplishments1

Part II: Looking Forward 2007 to 2011

2007 Summary3

High Occupancy Vehicle (HOV) Lanes6

Ontario Borders8

Federal/Provincial Transportation Action Plan
for the Greater Toronto Area11

Highway Expansion Projects12

Highway Rehabilitation Projects20

Part III: Planning for the Future

Future Highway Expansion44

Highway Planning Process47

Appendix

2006 Completed Project List49

This page appears blank intentionally.

In 2006, the Ontario government invested \$745 million to expand and repair highway infrastructure in Southern Ontario.

Some of the projects completed include:

Widening Highway 401 from four to six-lanes from Manning Road to Puce Road near Windsor: Widening this stretch of highway improved safety and traffic flow on one of Ontario's most important trade corridors. This was a federal/provincial cost shared project under the Strategic Highway Infrastructure Program (SHIP).

Highway 400 between Highway 401 and Maple Leaf Road in Toronto: Improvements such as resurfacing, bridge repairs, highway lighting, median barriers and improvements at the Highway 400 off-ramp/Jane Street intersection ensures traffic is moving safely and efficiently through this area.

Traffic signals and intersection improvements on the Highway 404 ramps at Aurora Road, Bloomington Road and Stouffville Road in York Region: New turning lanes and traffic lights made these locations safer for pedestrians and drivers.

Highway 26 between Owen Sound and Woodford: Repairs to 15 km of highway and the construction of a new truck-climbing lane improved driving conditions and road safety.



Highway 400 project "before"



Highway 400 project "after"



Highway 26 project "during"



Highway 26 project "after"

Highway 401 between Dorchester Road and Highbury Avenue in London: Repaved 10 km of highway to ensure a smoother drive for motorists on one of Ontario's most important trade corridors.

Northumberland Road 30 Bridge at Highway 401 in Brighton: Keeping this bridge in good repair helps Highway 401 drivers move efficiently through this area.



Highway 401 project “after”

A complete listing of the major highway construction projects completed in 2006 is provided in the Appendix to this document.

A summary of the accomplishments related to the 2006 construction program is outlined below:

- **Built 10 km of new highways**
- **Built 5 new bridges**
- **Repaired 250 km of highways**
- **Repaired 64 bridges**
- **Built 1 new Commuter Parking Lot**
- **Operational improvements included shoulder improvements, highway lighting, traffic signals, new guide rails, passing lanes, truck-climbing lanes, turning lanes and pedestrian crosswalks**
- **Almost 19,000 jobs were created across Ontario.**



Highway 7 project “after”

Highway 7 at Parkhill Road in Peterborough: New traffic lights and intersection improvements including turning lanes and pedestrian crosswalks make this area safer for pedestrians and drivers.

In 2007, the Ontario government plans to invest \$899 million to expand and repair highway infrastructure in Southern Ontario.

Key projects scheduled to begin in 2007 include:

GTA – Toronto

- Installing noise barriers at the Highway 401/Leslie Avenue interchange in Toronto. This improvement will help reduce Highway 401 traffic noise for local residents in the area.
Expected completion: 2007
- Rebuilding southbound express lanes on Highway 427 between the QEW and Highway 401 in Toronto. Improvements on this highway will provide drivers with a safe road and a smoother driving surface and will ensure the highway is in a good state of repair for many years.
Expected completion: 2008

GTA – Peel Region

- The final phase of the four-lane extension on Highway 410 between Mayfield Road and Highway 10 in Brampton is scheduled to begin. This will ease traffic congestion and improve travel times for commuters.
Expected completion: 2009
- Widening Highway 10 from two to four-lanes from one km north of Regional Road 24 to Highway 9 in the Town of Caledon. These improvements will improve traffic flow and road safety.
Expected completion: 2008

GTA – Durham Region

- Repaving portions of Highway 12 between Regional Road 48 and Highway 48. Keeping this stretch of highway in good repair will benefit local residents and drivers travelling to recreational areas.
Expected completion: 2007

GTA – York Region

- Building the Green Lane bridge as part of the Highway 404 extension between Green Lane and Ravenshoe Road.
Expected completion: 2007 (bridge only)

GTA – Halton Region

- Repairing the Guelph Line bridge at Highway 401 and upgrading traffic signals and the commuter parking lot. These improvements will keep drivers moving efficiently through the Milton area.
Expected completion: 2008

Niagara Region

- Widening QEW from four to six-lanes from Seventh Street to the Garden City Skyway in St. Catharines. This is a federal/provincial cost shared project under the Border Infrastructure Fund. Expanding this stretch of highway will significantly improve traffic flow during summer peak periods.

Expected completion: 2011

Simcoe County

- Building the Fairgrounds Road and Batteaux River bridges as part of the new alignment of Highway 26 between Wasaga Beach and Collingwood. Changes will improve road safety.

Expected completion: 2008 (bridges only)

Windsor & Southwestern Ontario

- Widening Highway 3 from two to four-lanes from the west junction of Essex County Road 34 to Essex County Road 8 near Windsor. This will ease traffic congestion and improve road safety.

Expected completion: 2008

- Widening Highway 401 from four to six-lanes from Highway 3 to Manning Road in Windsor. This is a federal/provincial cost shared project under the Border Infrastructure Fund. Expanding this stretch of highway will improve safety and traffic flow on one of Ontario's most important trade corridors. *Expected completion: 2010*

- Repaving, bridge repairs and intersection improvements on Highway 7/8 from Waterloo Road 1 to Waterloo Road 5 in New Hamburg. These changes will improve road safety and access for local residents.

Expected completion: 2007

- Reconstruction, bridge repairs and new passing lanes on Highway 6 from Fergus to Arthur. These upgrades will improve road safety and traffic flow for local residents and drivers travelling to recreational areas.

Expected completion: 2008

Kingston, Ottawa & Eastern Ontario

- Widening Highway 401 from four to six-lanes west of Sydenham Road to west of Montreal Street in Kingston. Expanding this section of highway will keep traffic moving safely and efficiently.
Expected completion: 2010
- Reconstructing Highway 7, including building a new eastbound passing lane and extending a westbound truck climbing lane on Highway 7 between Highway 62 and Marmora. These upgrades will improve driving conditions and road safety.
Expected completion: 2008
- Reconstructing Highway 15 and building passing lanes in both directions between Smith Falls and Lanark Road 10. These changes will improve safety and traffic flow for motorists.
Expected completion: 2008
- Replacing the Island Park Drive bridge deck at Highway 417 in Ottawa. MTO will be utilizing an innovative technology to replace this bridge deck over a single weekend, thus significantly reducing the traffic impacts associated with conventional bridge replacement. Replacing this bridge in a timely manner will keep Highway 417 drivers moving efficiently through this area.
Expected completion: 2007

Planned improvements related to the 2007 construction plan are outlined below:

- **Building 58 km of new highways**
- **Building 7 new bridges**
- **Repairing 201 km of highway**
- **Repairing 90 bridges**
- **Operational improvements including noise barriers, truck-climbing lanes, traffic signals, highway lighting, turning lanes, pedestrian crosswalks, median barriers, rumble strips and passing lanes**
- **Creating over 22,000 jobs across Ontario.**

Due to unpredictable aspects of highway planning and construction, projects are subject to change. Factors such as weather, environmental considerations and approvals, traffic staging, design changes and unexpected field conditions can affect construction schedules. All projects are subject to approvals under various pieces of legislation, including the Ontario *Environmental Assessment Act*. It is important to recognize that these conditions may have an impact on project timing.

In 2007, the Ontario government plans to invest \$79 million of the total \$899 million highway infrastructure investment to build High Occupancy Vehicle (HOV) lanes on some of Southern Ontario's most congested highways.

The government continues to move forward with this highly successful program that provides commuters with travel choices, encourages carpooling and transit use and promotes a healthy environment.

Did you know?

On Highways 403 and 404, HOV commuters are saving 14 to 17 minutes per trip compared to their travel time before HOV lanes opened in December 2005. Moreover, travel time in the other general-purpose lanes has also improved since the HOV lanes opened, with a time savings of about eight minutes on Highway 403 eastbound, and 11 minutes on Highway 404 southbound.



HOV lane on Highway 403, Mississauga



HOV lane on Highway 404, Toronto

HOV lanes are planned for the following corridors:

Highway 404 in Toronto: An HOV lane is scheduled to open in summer 2007 and will run for seven km on Highway 404 northbound between Sheppard Avenue and Highway 7.

Highway 417 in Ottawa: HOV lanes on Highway 417 will run approximately eight km in both directions between Moodie Drive and Palladium Drive as part of a project that will also include additional general traffic lanes. The first section of Highway 417 – Highway 416 to Eagleson Road will begin construction in 2007. A portion of the eastbound HOV lane is expected to be opened in 2009. The second section of Highway 417 – Eagleson Road to Highway 7 – will begin construction in 2009. The remaining portion of the eastbound HOV lane, the entire westbound HOV lane and the general traffic lanes are expected to be opened in 2011.

QEW in Burlington/Oakville: Projects are already underway to widen the Bronte and Sixteen Mile Creek bridges in advance of HOV lanes. Two additional projects between Burloak Drive and Trafalgar Road are scheduled to begin in 2007. An additional project between Guelph Line and Burloak Drive is scheduled to begin in 2010. When completed in 2011, HOV lanes on QEW will run 17 km in both directions between Guelph Line and Trafalgar Road.

Highway 400 in Vaughan: HOV lanes on Highway 400 will run seven km in both directions between Major Mackenzie Drive and King Road by 2010. Construction of HOV lanes is scheduled to begin in 2008, which includes constructing a new King Road interchange. Widening Highway 400 from six to eight-lanes between Major Mackenzie Drive and King Road will begin in 2009.

Highway 427 in Toronto: HOV lanes on Highway 427 will run nearly seven km in both directions between Highway 409 and Highway 407 by 2011. Construction of HOV lanes is scheduled to begin in 2009. These improvements will ease congestion and shorten commute times for drivers in this area.

For more information on HOV lanes, please visit:

www.ontario.ca/hov



HOV lane on Highway 403, Mississauga

Border crossings in Southern Ontario are the gateways to the province's biggest international market. Moving goods across the border efficiently is critical to our economic prosperity. Every day, \$900 million in goods crosses the Ontario-U.S. border. It is estimated border delays cost both countries more than \$13 billion a year. Keeping traffic moving on our border crossings is essential to the economies of both countries.

The Southern Highways Program outlines improvements to provincial highway infrastructure approaching border crossings. The ministry has moved forward with improvements to relieve congestion at border crossings in Niagara, Sarnia and Windsor.

Did you know?

Five of the top seven busiest border crossings between Canada and the U.S. are in Ontario - Windsor-Detroit, Sarnia-Point Edward, Fort Erie, Queenston-Lewiston, and Thousand Islands.

Key projects underway or scheduled to begin in 2007 and 2008 include:

Niagara Borders

- Widening QEW from four to six-lanes from Seventh Street to the Garden City Skyway in St. Catharines. This is a federal/provincial cost shared project under the Border Infrastructure Fund. Expanding this stretch of highway will significantly improve traffic flow leading to the Queenston-Lewiston, Rainbow and Peace Bridges.

Expected completion: 2011

- Repaving the highway, repairing bridges and installing four new electronic message signs on Highway 405 from Queenston-Lewiston Bridge Toll Plaza to QEW in Niagara Falls. These changes will help improve the driving surface and road safety leading to the Queenston-Lewiston Bridge.

Expected completion: 2008

Sarnia Border

- Widening Highway 402 from the Bluewater Bridge to west of Highway 40 in Sarnia. This is a federal/provincial cost shared project under the Border Infrastructure Fund. Expanding this stretch of highway will improve traffic flow and road safety leading to the Bluewater Bridge.

Expected completion: 2009



Sarnia Border, continued

- Repairing the highway and bridges on Highway 402 from Lambton Road 26 to Lambton Road 30, east of Sarnia, is currently underway. This is a federal/provincial cost shared project under the Border Infrastructure Fund. Improvements to this stretch of highway will improve safety and traffic flow for drivers travelling to and from the Bluewater Bridge.

Expected completion: 2008

Windsor Border

- Widening the Highway 401 corridor from four to six-lanes between Windsor and Tilbury began in 2004. Currently, two phases of construction have been completed and another is underway. Widening Highway 401 from four to six-lanes from Highway 3 to Manning Road in Windsor is also scheduled to begin in 2007. This is a federal/provincial cost shared project under the Border Infrastructure Fund. Expanding 45 km of highway will improve safety and traffic flow on one of Ontario's most important trade corridors.

Expected completion: 2010

The Windsor Gateway

The Ontario government is committed to improving traffic flow at the Windsor Gateway to keep people moving safely and efficiently, to help build prosperity for Ontario families and to strengthen our economy.

Ontario is participating with the federal government, local municipalities and other agencies to make investments that will address traffic flow, congestion and efficiency at the border crossing in Windsor, under the *Let's Get Windsor-Essex Moving Strategy*. Funding for this strategy comes from the Canada-Ontario

Border Infrastructure Fund, a joint commitment by the federal and provincial governments to invest \$300 million on the Windsor Gateway.

In addition, the Ontario Ministry of Transportation, in partnership with Transport Canada, the United States and the State of Michigan, is leading the Canadian portion of the Detroit River International Crossing environmental study process, which is seeking a long-term solution to border transportation issues.

The partnership is considering the entire border transportation system – river crossing, inspection plazas and access roads – to achieve an end-to-end solution that will best meet current and future mobility needs, while minimizing impacts on the surrounding communities and environment.

The study is committed to identifying a preferred alternative for a new six-lane controlled-access freeway, a new inspection plaza and a new river crossing in 2007, with completion of a new border crossing system by 2013.

For more information on border improvements, please visit:

www.mto.gov.on.ca

This page appears blank intentionally.

Federal/Provincial Transportation Action Plan for the Greater Toronto Area (FLOW)

In March 2007, the federal government announced up to \$962 million in partnership with the Province of Ontario and five municipalities to generate a combined investment of close to \$4.5 billion in public transit and highway infrastructure projects in the Greater Toronto Area (GTA).

The FLOW initiative is a new long-term transportation action plan for the GTA. FLOW is designed to reduce gridlock, improve the environment and increase economic growth in one of the fastest growing areas in Canada.

As part of the FLOW initiative, the Province of Ontario has agreed to invest in three key highway projects: Highway 7 widening, Highway 404 north extension and Highway 407 east extension.

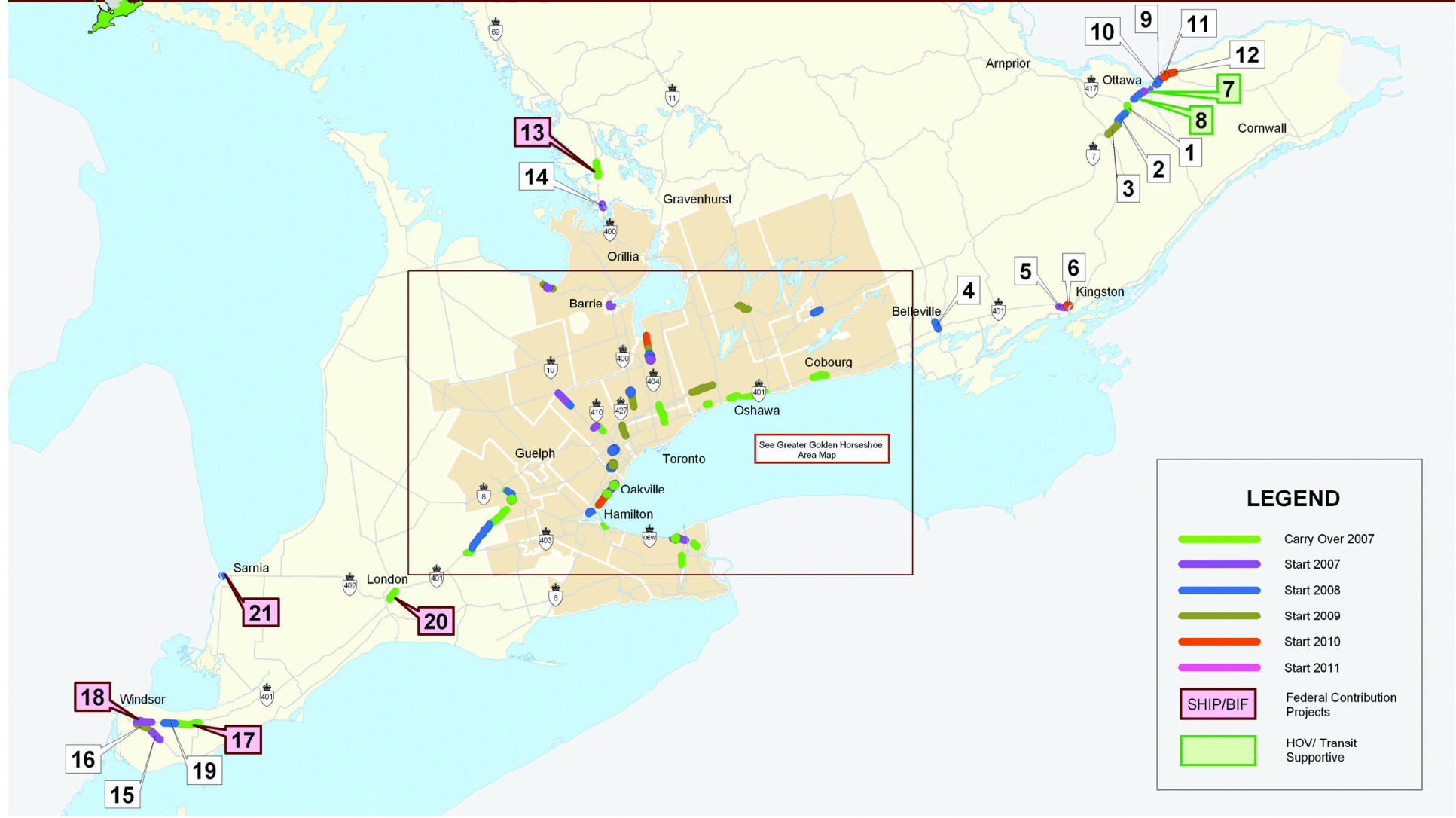
Widening of Highway 7 in Durham Region: Highway 7 will be widened from Brock Road to Highway 12 in the Regional Municipality of Durham. The project will help alleviate traffic congestion in a rapidly growing area of GTA and will improve links to Highway 407. Construction is set to begin in 2009 and expected to be completed by 2012.

Extension of Highway 404: This project involves the extension of Highway 404 north from Green Lane to Ravenshoe Road. This extension will help reduce travel times, support economic development and help take long-distance commuter and recreational traffic off local roads in the Regional Municipality of York. The first phase of construction, building a new bridge over Green Lane, will begin in 2007 while the remainder of the extension is expected to be completed by 2012.

Extension of Highway 407 east to Highway 35/115: Highway 407 will be extended eastwards by 67 km from Brock Road in Pickering to Highway 35/115 in Clarington and will include two north-south connections to Highway 401: one from Ajax/Whitby, and one from Oshawa/Clarington. A provision for a future dedicated transit right-of-way is also included. The Province of Ontario will determine the appropriate financing and delivery for this project. The project is currently targeted for completion by 2013.



Provincial Highways Construction Program Southern Ontario Expansion 2007 to 2011



Southern Ontario Expansion 2007 to 2011

HWY PROJECT #	HWY	REGION	LOCATION	DESCRIPTION	TARGET START DATE	TARGET COMPLETION
1	7	Eastern Ontario	Hwy 417 to Carleton Place - Phase 1 of 3 - Hwy 417 to Jinkinson Rd.	Two to four-lane widening	underway	2008
2	7	Eastern Ontario	Hwy 417 to Carleton Place - Phase 2 of 3 - Jinkinson Rd. to Ashton Station Rd.	Two to four-lane widening	2008	2010
3	7	Eastern Ontario	Hwy 417 to Carleton Place - Phase 3 of 3 - Ashton Station Rd. to Carleton Place	Two to four-lane widening	2009	2011
4	62	Eastern Ontario	Hwy 401 to Foxboro	Four to five-lane widening	2008	2009
5	401	Eastern Ontario	Hwy 15 to Frontenac County Rd. 38 - Phase 2 - West of Sydenham Rd. to west of Montreal St., Kingston	Four to six-lane widening	2007	2010
6	401	Eastern Ontario	Hwy 15 to Frontenac County Rd. 38 - Phase 3 - Montreal St. and CNR Overhead bridges, Kingston	Bridge replacement and bridge widening	2010	2011
7	417	Eastern Ontario	Hwy 416 to Eagleson Rd., Ottawa (HOV lanes)	Four to eight-lane widening	2007	2009
8	417	Eastern Ontario	Egleson Rd. to Hwy 7, Ottawa (HOV lanes)	Four to eight and four to six lane widening	2009	2011
9	417 - OQW	Eastern Ontario	Hwy 416 to Anderson Rd., Island Park Dr. Overpass, Ottawa	Bridge deck replacement	2007	2007
10	417 - OQW	Eastern Ontario	Hwy 416 to Anderson Rd., Clyde Ave., Ottawa	Bridge deck replacement and widening/noise Barrier	2008	2009
11	417 - OQW	Eastern Ontario	Hwy 416 to Anderson Rd., Merivale Rd., Carling Ave., Kirkwood Rd. Bridges, Ottawa	Bridge deck replacements and widening	2010	Beyond 2011
12	417 - OQW	Eastern Ontario	Hwy 416 to Anderson Rd., Vanier Parkway to Regional Rd. 174, Ottawa	Six to eight-lane widening	2010	2011
13	69/400	Northeastern Ontario	Musquash River to MacTier - (Wahta First Nation) (SHIP)	Two to four-lane widening	underway	2008
14	69/400	Northeastern Ontario	Baxter Township Transfer Site - Muskoka Dump Rd., north of Port Severn	Service road	2007	2007
15	3	Southwestern Ontario	Leamington to Windsor Phase 1 - West Jct. of Essex County Rd. 34 to Essex County Rd. 8	Two to four-lane widening	2007	2008
16	3	Southwestern Ontario	Leamington to Windsor - Phase 2 - Essex County Rd. 11 to West Jct. Essex County Rd. 34	Two to five-lane widening	2009	2010
17	401	Southwestern Ontario	Windsor to Tilbury - Phase 3 of 5 - Essex Rd. 27 to Hwy 77 - (SHIP)	Four to six-lane widening	underway	2007
18	401	Southwestern Ontario	Windsor to Tilbury - Phase 4 of 5 - Hwy 3 to Manning Rd. (BIF)	Four to six-lane widening	2007	2010

NOTE: Project timing is subject to change based on funding, planning, design, environmental approval, property acquisition and construction requirements.

Southern Ontario Expansion 2007 to 2011, continued

HWY PROJECT #	HWY	REGION	LOCATION	DESCRIPTION	TARGET START DATE	TARGET COMPLETION
19	401	Southwestern Ontario	Windsor to Tilbury - Phase 5 of 5 - Puce Rd. to Essex Rd. 27	Four to six-lane widening	2008	2009
20	401	Southwestern Ontario	Hwy 402 to Wellington Rd. - London - (BIF)	Four to six-lane widening	underway	2007
21	402	Southwestern Ontario	Bluewater Bridge easterly, Sarnia (BIF)	Four to six-lane widening	2008	2009

NOTE: Project timing is subject to change based on funding, planning, design, environmental approval, property acquisition and construction requirements.

This page appears blank intentionally.

Greater Golden Horseshoe Expansion 2007 to 2011

HWY PROJECT #	HWY	REGION	LOCATION	DESCRIPTION	TARGET START DATE	TARGET COMPLETION
1	7	Central Ontario	Brock Rd. (Pickering) to Hwy 12, Brooklin	Two to four-lane widening	2009	Beyond 2011
2	10	Central Ontario	Caledon to Hwy 9 - Phase 1 of 2 - 1 km north of Regional Rd. 24 to Hwy 9	Two to four-lane widening	2007	2008
3	10	Central Ontario	Caledon to Hwy 9 - Phase 2 of 2 - 1 km south of Regional Rd. 24 to 1 km north of Regional Rd. 24	Two to four-lane widening	2008	2008
4	26N	Central Ontario	Wasaga to Collingwood - Phase 2 of 3 - Fairgrounds Rd. and Batteaux River bridges	New bridges	2007	2008
5	26N	Central Ontario	Wasaga to Collingwood - Phase 3 of 3 - Sixth Line to existing Hwy 26	New four-lane highway	2009	2010
6	400	Central Ontario	Teston Rd., Vaughan (Partnership with York Region)	New interchange	2008	2008
7	400	Central Ontario	King Rd. Interchange, York Region - (HOV lanes)	Interchange improvement	2008	2009
8	400	Central Ontario	Kirby Rd. to King Rd., Vaughan (HOV lanes)	Six to eight-lane widening	2009	2010
9	400	Central Ontario	Major Mackenzie Dr. to Kirby Rd., Vaughan (HOV lanes)	Six to eight-lane widening	2009	2010
10	400	Central Ontario	Essa Rd. Interchange, Barrie	New commuter parking lot	2007	2007
11	401	Central Ontario	Westney Rd. to Salem Rd., Ajax	Widening	underway	2007
12	401	Central Ontario	Stevenson Rd. to Hwy 35/115 Split and Stevenson Rd. Interchange, Oshawa	Resurfacing/new interchange	underway	2009
13	401	Central Ontario	McLaughlin Rd. Bridge, Mississauga (Partnership with City of Mississauga)	Bridge replacement	2008	2008
14	401	Central Ontario	Hwy 410 to Hurontario St., Mississauga	New interchange/widening	2008	2011
15	403	Central Ontario	Waterdown Rd. Interchange - (Partnership with City of Burlington)	New full interchange/widening	2008	2008
16	403	Central Ontario	Winston Churchill Blvd., Mississauga	New commuter parking lot	2008	2008
17	403	Central Ontario	Erin Mills Pkwy., Mississauga	New commuter parking lot	2009	2009
18	404	Central Ontario	Sheppard Ave. to Beaver Creek, northbound lanes, Toronto/York Region (HOV lanes)	Widening	underway	2007

NOTE: Project timing is subject to change based on funding, planning, design, environmental approval, property acquisition and construction requirements.

Greater Golden Horseshoe Expansion 2007 to 2011, continued

HWY PROJECT #	HWY	REGION	LOCATION	DESCRIPTION	TARGET START DATE	TARGET COMPLETION
19	404	Central Ontario	Hwy 404 Extension - Phase 1 of 4 Green Lane Underpass, York Region -	New bridge	2007	2007
20	404	Central Ontario	Hwy 404 Extension - Phase 2 of 4 Mount Albert Rd., Underpass, York Region -	New bridge	2008	2008
21	404	Central Ontario	Hwy 404 Extension - Phase 3 of 4 - Green Lane to Queensville Side Rd., York Region	New four-lane highway	2009	Beyond 2011
22	404	Central Ontario	New 404 Extension - Phase 4 of 4 - Queensville Side Rd. to Ravenshoe Rd., York Region	New four-lane highway	2010	Beyond 2011
23	406	Central Ontario	Beaverdams Rd. to Port Robinson Rd., Thorold/Welland	Two to four-lane widening	underway	2007
24	410	Central Ontario	Bovaird Dr. to Mayfield Rd., Brampton	New four-lane highway	underway	2008
25	410	Central Ontario	Mayfield Rd. to Hwy 10, Brampton	New four-lane highway	2007	2009
26	427	Central Ontario	Hwy 409 to Hwy 407, Toronto (HOV lanes)	Widening	2009	2011
27	QEW	Central Ontario	Seventh St. to Garden City Skyway, St. Catharines (BIF)	Four to six-lane widening	2007	2011
28	QEW	Central Ontario	Glendale Ave. to Mountain Rd., Niagara Falls (BIF)	Four to six-lane widening	underway	2008
29	QEW	Central Ontario	Henley Bridge, St. Catharines (BIF)	Four to six-lane widening	underway	2007
30	QEW	Central Ontario	Red Hill Valley Parkway Interchange - Connection to QEW, Phase 3 of 3, Hamilton	New interchange and widening	underway	Interchange to be open 2007, QEW widening 2009
31	QEW	Central Ontario	Bronte Creek Bridge, Oakville (HOV lanes)	Bridge widening	underway	2007
32	QEW	Central Ontario	Sixteen Mile Creek Bridge, Oakville (HOV lanes)	Bridge widening	underway	2007
33	QEW	Central Ontario	Burloak Dr. to Third Line, Oakville (HOV lanes)	Six to eight-lane widening	2007	2011
34	QEW	Central Ontario	Third Line to Trafalgar Rd., Oakville (HOV lanes)	Six to eight-lane widening	2007	2011
35	QEW	Central Ontario	Guelph Line to Burloak Dr., Burlington/Oakville (HOV lanes)	Six to eight-lane widening	2010	2011
36	7	Eastern Ontario	Hwy 28 to Drummond Line, Peterborough	Two to five-lane widening	2008	2010

NOTE: Project timing is subject to change based on funding, planning, design, environmental approval, property acquisition and construction requirements.

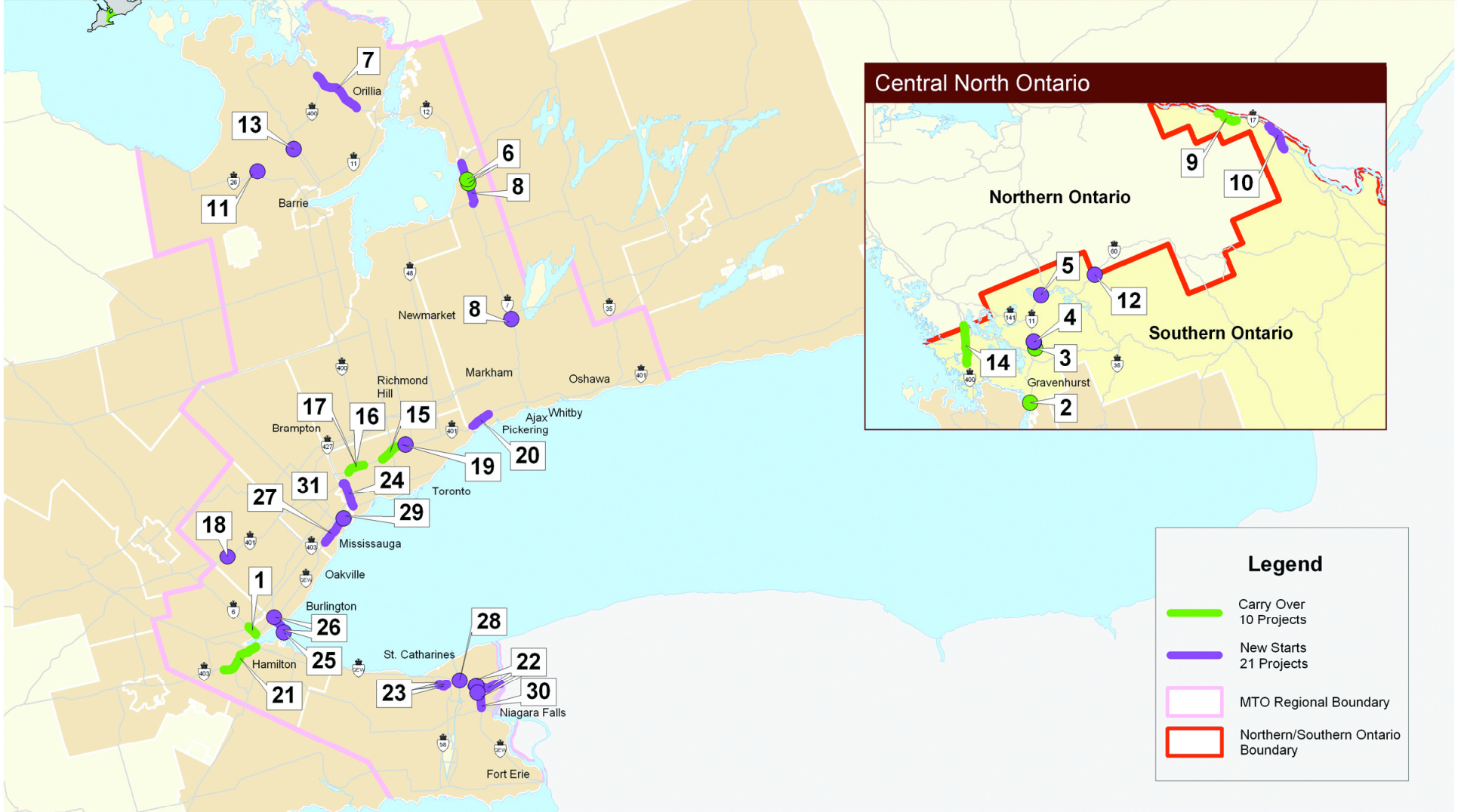
Greater Golden Horseshoe Expansion 2007 to 2011, continued

HWY PROJECT #	HWY	REGION	LOCATION	DESCRIPTION	TARGET START DATE	TARGET COMPLETION
37	7	Eastern Ontario	Lindsay By-Pass - Victoria County Rd. 36 to Angeline St.	Two to four-lane widening	2009	2010
38	401	Eastern Ontario	Cobourg to Port Hope - Northumberland Rd. 28 to Burnham St.	Four to six-lane widening	underway	2007
39	8	Southwestern Ontario	Kitchener-Waterloo Expressway - Fairway Rd. to Grand River	Four to eight-lane widening	underway	2007
40	8	Southwestern Ontario	Kitchener-Waterloo Expressway - Grand River to Sportsworld Dr.	Four to six and six to eight-lane widening	2008	2010
41	401	Southwestern Ontario	Woodstock to Cambridge - Drumbo Rd. to Waterloo R.R. 97 (Cedar Creek) - Phase 1 of 3	Four to six-lane widening	underway	2007
42	401	Southwestern Ontario	Woodstock to Cambridge - Hwy 403 to Oxford Rd. 2 - Phase 2 of 3	Four to six-lane widening	underway	2007
43	401	Southwestern Ontario	Woodstock to Cambridge - Oxford Rd. 2 to Drumbo Rd. - Phase 3 of 3	Four to six-lane widening	2008	2009
44	401	Southwestern Ontario	Homer Watson Blvd. (Partnership with Regional Municipality of Waterloo)	Interchange improvement	underway	2007

NOTE: Project timing is subject to change based on funding, planning, design, environmental approval, property acquisition and construction requirements.



Provincial Highways Construction Program - Central Ontario Rehabilitation 2007



Central Ontario Rehabilitation 2007

HWY PROJECT #	HWY	STATUS	LOCATION	DESCRIPTION	TARGET COMPLETION	PROJECT LENGTH (KM)
1	6	underway	Hwy 403 to Hwy 5, Hamilton	Reconstruction/new interchange/truck climbing lane/noise barrier/median barrier	2008	3.0
2	11	underway	Severn River Bridge, south of Gravenhurst	Bridge rehabilitation	2009	n/a
3	11	underway	North Muskoka River Bridge, south of Bracebridge	Bridge rehabilitation	2007	n/a
4	11	new	Hwy 11 and Muskoka Rd. 117, Bracebridge	Culvert replacement and culvert rehabilitations	2007	n/a
5	11	new	Vernon Lake Narrows bridge, northbound lanes, Huntsville	Bridge rehabilitation	2008	n/a
6	12	underway	White's Creek and Beaverton River Bridges, Durham Region	Bridge replacements	2008	n/a
7	12	new	Prices Corners to Coldwater	Reconstruction/bridge rehabilitation/intersection improvements/truck climbing lane	2008	15.0
8	12 and 7	new	Hwy 48 north, Beaverton and Hwy 7A, Manchester	Resurfacing/intersection improvements/traffic signals	2007	10.1
9	17	underway	Stonecliffe easterly to west of Rolphton	Resurfacing/passing lanes	2007	12.8
10	17	new	Point Alexander easterly to Chalk River	Resurfacing	2008	16.3
11	26	new	Horseshoe Valley Rd., (County Rd. 22), Simcoe	Intersection improvements/traffic signals	2007	2.9
12	60	new	Long Lake Creek culvert, east of Hwy 35, Oxtongue	Culvert rehabilitation	2007	n/a
13	400	new	CPR Bridge, northbound lanes, north of Barrie	Bridge widening	2008	n/a
14	400	underway	Port Severn northerly to Muskoka Rd. 38, northbound lanes	Reconstruction	2007	22.6
15	401	underway	Leslie St. to Avenue Rd., eastbound collector lanes, Toronto	Bridge rehabilitations/reconstruction/noise barrier/traffic signals	2007	5.9
16	401	underway	Jane St. to Kipling Ave., eastbound collector lanes, Toronto	Bridge rehabilitations/reconstruction	2007	5.0
17	401	underway	Jane St. to Kipling Ave., westbound express lanes, Toronto	Bridge rehabilitations/reconstruction/operational improvements	2007	4.3
18	401	new	Guelph Line Interchange, Milton	Interchange improvements/traffic signals/commuter parking lot	2008	n/a

NOTE: Project timing is subject to change based on funding, planning, design, environmental approval, property acquisition and construction requirements.

Central Ontario Rehabilitation 2007, continued

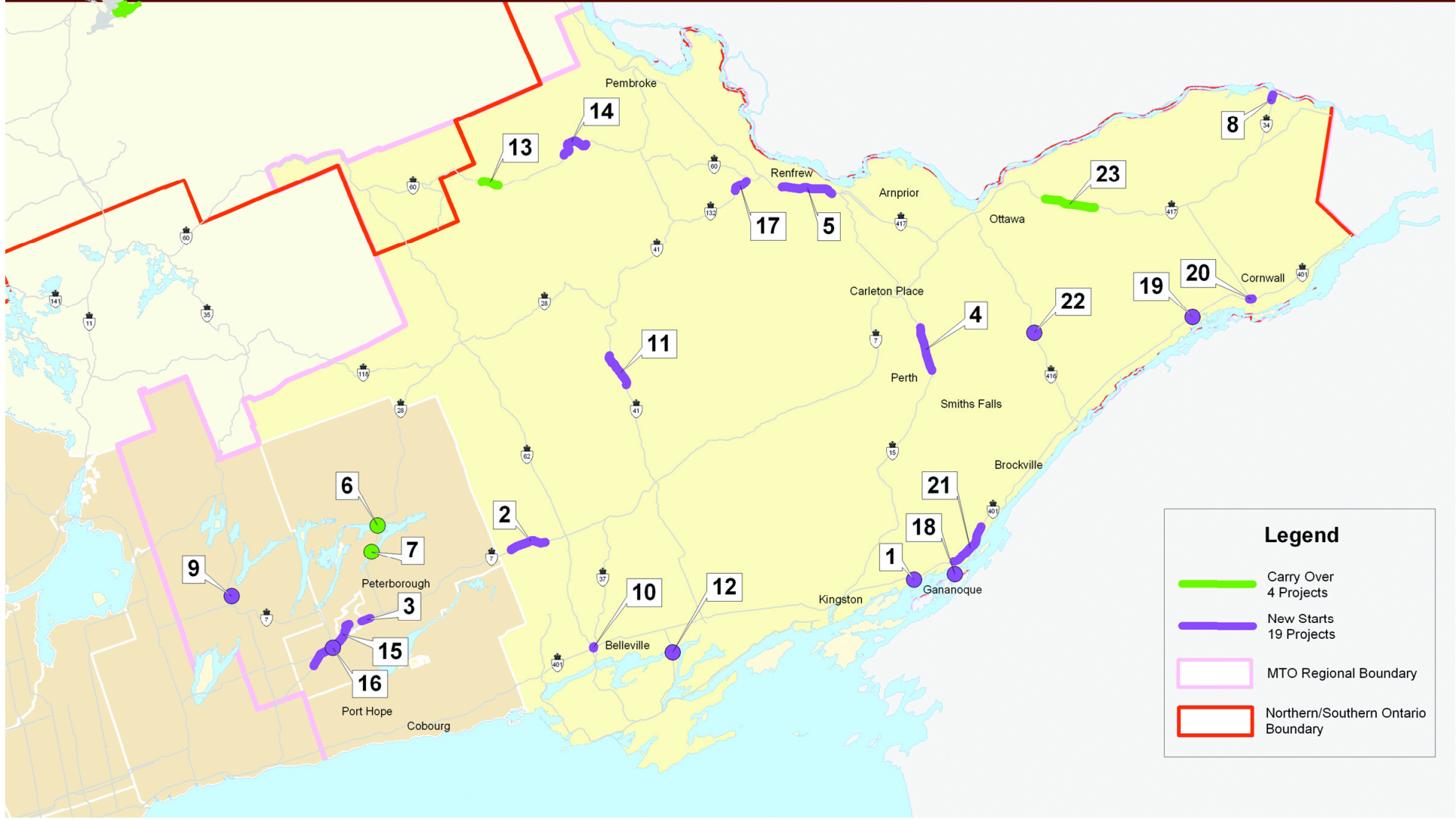
HWY PROJECT #	HWY	STATUS	LOCATION	DESCRIPTION	TARGET COMPLETION	PROJECT LENGTH (KM)
19	401	new	Leslie St. Interchange, Toronto	Noise barrier	2007	1.9
20	401	new	Brock Rd. to Rougemount Dr., eastbound express lanes, Pickering	Resurfacing	2007	5.8
21	403	underway	King St. to Wilson St., Hamilton	Resurfacing/operational improvements/ noise barriers	2007	12.0
22	405	new	Queenston Lewiston Bridge Toll Plaza to QEW, Niagara Falls	Reconstruction/bridge rehabilitations/ message signs	2008	8.6
23	406	new	Westchester Ave. and Fourth Ave., St. Catharines	Interchange improvements/traffic signals	2007	0.1
24	427	new	QEW to Hwy 401, southbound express lanes, Toronto	Reconstruction/bridge rehabilitations	2008	7.3
25	QEW	new	Burlington Bay Skyway, Niagara bound, Burlington	Bridge rehabilitation/resurfacing	2008	2.5
26	QEW	new	Burlington Bay Skyway, Toronto bound, Burlington	Resurfacing/overhead signs/ COMPASS improvements	2008	2.5
27	QEW	new	Winston Churchill Blvd. to Mississauga Rd., Mississauga	Resurfacing/median barrier replacements/ highway lighting	2009	6.0
28	QEW	new	Garden City Skyway Bridge, St. Catharines	Pier repairs	2007	n/a
29	QEW	new	Cawthra Rd. Interchange, Mississauga	Ramp improvements	2007	1.8
30	QEW	new	Hwy 420 to Mountain Rd., Niagara Falls	Resurfacing	2007	7.0
31	Various	new	Various Hwys within Central Ontario	Selective resurfacing	2007	n/a

NOTE: Project timing is subject to change based on funding, planning, design, environmental approval, property acquisition and construction requirements.

This page appears blank intentionally.



Provincial Highways Construction Program - Eastern Ontario Rehabilitation 2007



Legend

- Carry Over
4 Projects
- New Starts
19 Projects
- MTO Regional Boundary
- Northern/Southern Ontario Boundary

Eastern Ontario Rehabilitation 2007

HWY PROJECT #	HWY	STATUS	LOCATION	DESCRIPTION	TARGET COMPLETION	PROJECT LENGTH (KM)
1	2	new	Thousand Island Parkway Bridge, Gananoque	Bridge rehabilitation	2007	n/a
2	7	new	West of Hwy 62 to Marmora	Resurfacing/passing lanes	2008	11.5
3	7	new	Drummond Line to Peterborough	Resurfacing/left turn lane	2008	3.0
4	15	new	Smiths Falls to Lanark Rd. 10	Reconstruction/passing lanes	2008	14.1
5	17	new	Arnprior to Renfrew	Resurfacing	2007	20.2
6	28	underway	Trent Canal and Burleigh Bridges, north of Peterborough	Bridge rehabilitations	2007	n/a
7	28	underway	Young's Point Bridge, north of Peterborough	Bridge rehabilitation	2007	n/a
8	34	new	Greenlane Rd. to Hawkesbury	Intersection improvements/resurfacing/bridge rehabilitation	2007	2.8
9	35	new	Victoria Rd. 4, Lindsay	Intersection improvements	2007	n/a
10	37	new	Blessington Rd., north of Belleville	Intersection improvements culvert rehabilitation	2007	0.6
11	41	new	Bon Echo Park to Machesney Lake Rd., Bon Echo	Resurfacing	2008	11.3
12	49	new	Hastings Rd. 2, Deseronto	Traffic signals	2007	n/a
13	60	underway	Barry's Bay to Arbor Vitae Rd.	Resurfacing/truck climbing lane	2007	5.5
14	60	new	Killaloe to Deacon	Resurfacing	2007	11.0
15	115	new	Tapley Quarter Line to Hwy 7, Peterborough	Reconstruction/paved shoulders	2007	23.0
16	115	new	Peterborough Rd. 28 Overpass - northbound, Springville	Bridge rehabilitation	2009	n/a
17	132	new	Renfrew to Renfrew Rd. 5	Resurfacing	2007	5.0
18	137	new	Thousand Island Parkway, east of Gananoque	Resurfacing	2007	8.5

NOTE: Project timing is subject to change based on funding, planning, design, environmental approval, property acquisition and construction requirements.

Eastern Ontario Rehabilitation 2007, continued

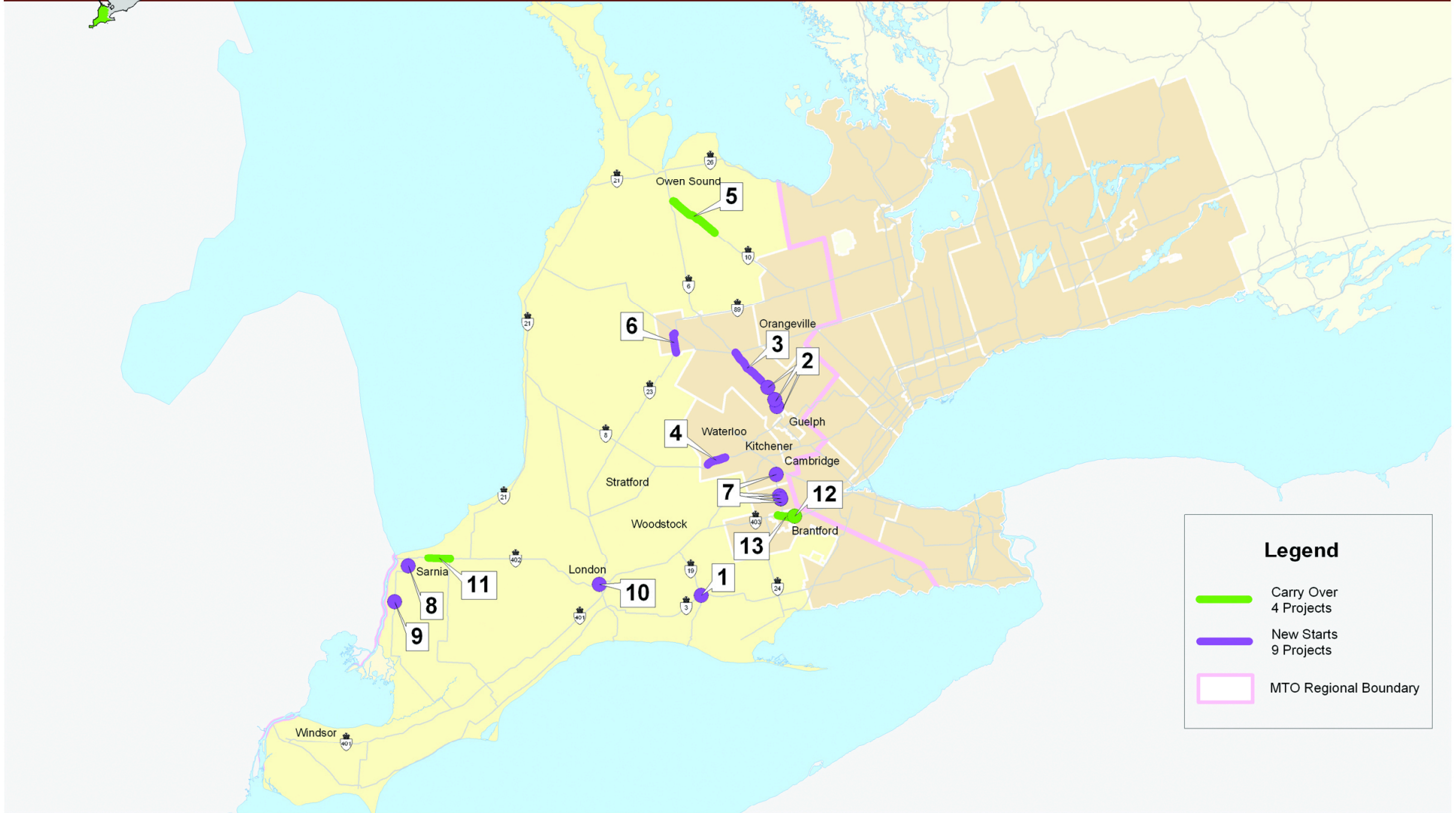
HWY PROJECT #	HWY	STATUS	LOCATION	DESCRIPTION	TARGET COMPLETION	PROJECT LENGTH (KM)
19	401	new	Hoople Creek and Hoasic Creek Bridges, Morrisburg	Bridge rehabilitations	2007	n/a
20	401	new	Pitt St. to Brookdale Ave., Cornwall	Noise barriers	2008	1.0
21	401	new	Hwy 137 to Mallorytown	Safety improvements	2007	14.3
22	416	new	Barnes Creek, south Kemptville	Culvert replacement	2007	n/a
23	417	underway	Limoges Rd. to Casselman	Resurfacing/bridge rehabilitations	2007	15.6

NOTE: Project timing is subject to change based on funding, planning, design, environmental approval, property acquisition and construction requirements.

This page appears blank intentionally.



Provincial Highways Construction Program - Southwestern Ontario Rehabilitation 2007

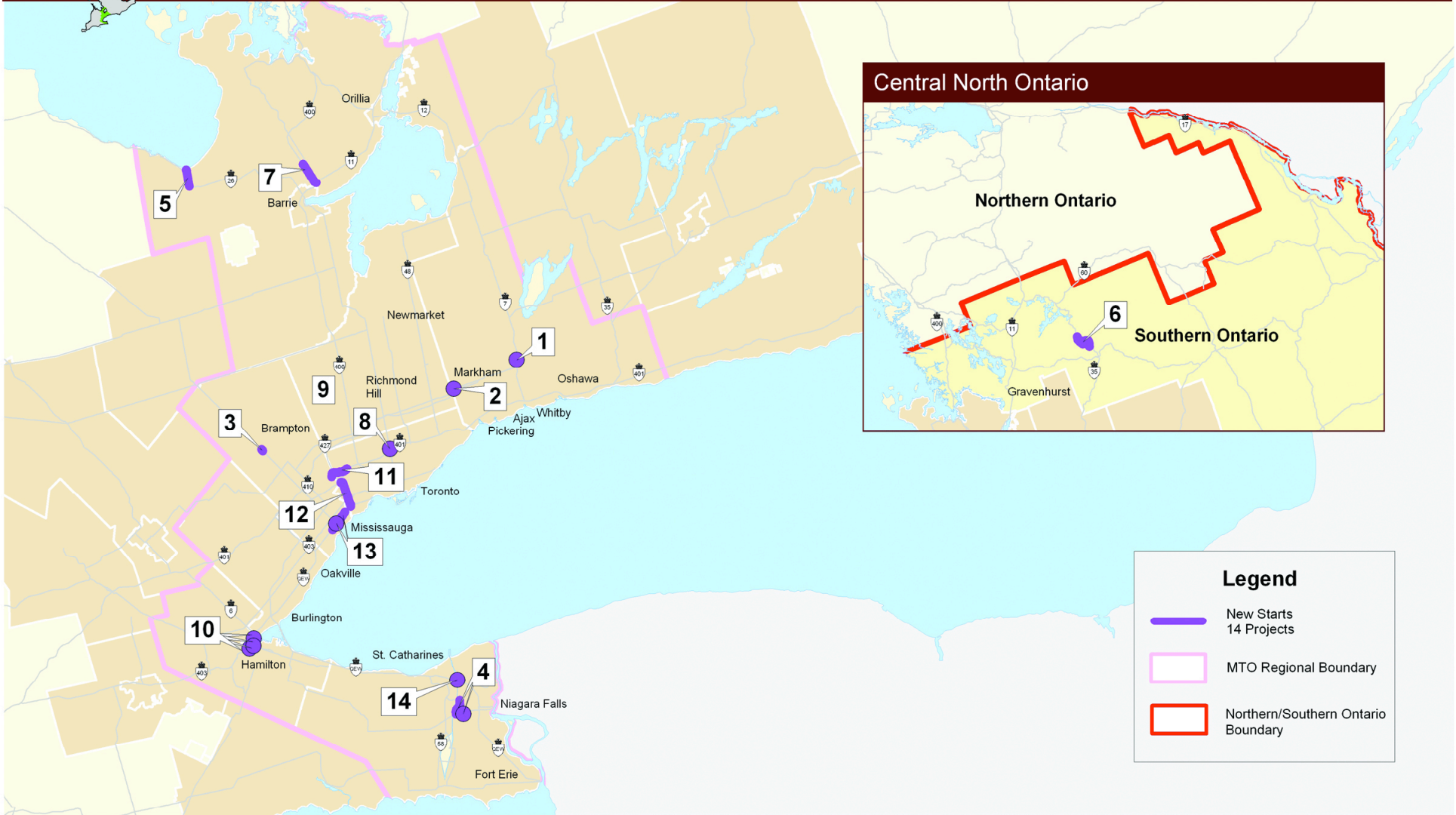


Southwestern Ontario Rehabilitation 2007

HWY PROJECT #	HWY	STATUS	LOCATION	DESCRIPTION	TARGET COMPLETION	PROJECT LENGTH (KM)
1	3	new	Big Otter Creek Bridge, Tillsonburg	Bridge rehabilitation	2007	n/a
2	6	new	Wellington Rd. 51, 22 and Nichol Twp. Rd. 2-3, south of Fergus	Intersection improvements/ commercial vehicle inspection facility	2007	n/a
3	6	new	Fergus to Arthur	Reconstruction/bridge rehabilitations/ passing lanes	2008	17.3
4	7	new	Waterloo Rd. 1 to Waterloo Rd. 5, New Hamburg	Resurfacing/bridge rehabilitation/ intersection improvements	2007	8.6
5	10	underway	Markdale to Chatsworth	Resurfacing/bridge rehabilitation	2007	23.7
6	23	new	Palmerston to Harriston	Reconstruction/bridge rehabilitation	2008	9.1
7	24	new	South Jct. Glen Morris Rd., Foot Bridge Rd., Scenic Dr. and Blue Lake Rd., north of Brantford	Intersection improvements	2007	n/a
8	40	new	Confederation Line, Sarnia	Intersection improvements	2007	n/a
9	40	new	Lambton Rd. 80 to Rokeby Line, Sarnia	Reconstruction/culvert rehabilitations/ intersection improvements	2008	13.1
10	402	new	Hwy 4 Interchange, Lambeth	Highway lighting	2007	n/a
11	402	underway	Lambton Rd. 26 to Lambton Rd. 30, east of Sarnia (BIF)	Reconstruction/bridge rehabilitations/ reconstruction - commercial vehicle inspection facility	2008	9.7
12	403	underway	Garden Ave. (Partnership with Brantford)	Interchange improvements	2007	n/a
13	403	underway	Garden Ave. to Brant County/Hamilton Boundary, Brantford	Resurfacing	2007	8.2

NOTE: Project timing is subject to change based on funding, planning, design, environmental approval, property acquisition and construction requirements.

Provincial Highways Construction Program - Central Ontario
Rehabilitation 2008



Central Ontario Rehabilitation 2008

HWY PROJECT #	HWY	STATUS	LOCATION	DESCRIPTION	TARGET COMPLETION	PROJECT LENGTH (KM)
1	7	new	Columbus Rd., Brooklin	Intersection improvements/traffic signals	2008	n/a
2	7	new	West Duffins Creek, Markham	Bridge replacement	2008	n/a
3	10	new	Caledon Rd. 22 (Old School Rd.)	Traffic signals	2008	n/a
4	20 and 58	new	Hwy 20 to Thorold Stone Rd. and Hwy 58 to Niagara Rd. 70, Thorold	Resurfacing	2009	6.3
5	26	new	Stayner northerly to Hwy 26N, Simcoe County	Resurfacing	2008	4.7
6	35	new	North of Hwy 118 northerly, Carnarvon	Resurfacing/bridge rehabilitations	2008	13.8
7	400	new	Hwy 11 to Hwy 93, southbound lanes, Simcoe	Resurfacing	2009	16.4
8	401	new	Hogg's Hollow Bridge, express lanes, Toronto	Bridge rehabilitation	2010	n/a
9	401	new	Various locations on Hwy 401, GTA	Selective resurfacing	2008	n/a
10	403	new	King St./Main St./York Ave./Aberdeen Ave., Hamilton	Bridge rehabilitations	2009	n/a
11	409	new	Hwy 401 to Hwy 427, Toronto	Resurfacing/bridge rehabilitations/ median barrier replacement/highway lighting	2010	4.1
12	427	new	QEW to Hwy 401, northbound express lanes, Toronto	Reconstruction/bridge rehabilitations	2009	7.7
13	QEW	new	Hurontario St. Interchange, Mississauga	Interchange reconstruction	2009	n/a
14	QEW	new	Garden City Skyway Bridge, St. Catharines	Pier repairs	2008	n/a

NOTE: Project timing is subject to change based on funding, planning, design, environmental approval, property acquisition and construction requirements.

Eastern Ontario Rehabilitation 2008

HWY PROJECT #	HWY	STATUS	LOCATION	DESCRIPTION	TARGET COMPLETION	PROJECT LENGTH (KM)
1	7	new	Scugog River Bridge, Lindsay	Bridge rehabilitation	2009	n/a
2	7	new	Norwood, east to west limits	Resurfacing	2008	2.1
3	7	new	Lennox and Addington/ Hastings County Line to Hwy 37	Resurfacing/passing lane	2009	9.1
4	7A	new	Bethany Creek Bridge, Bethany	Bridge rehabilitation	2008	n/a
5	17	new	Constable Philip Shrive and CNR Overheads, Renfrew	Bridge rehabilitation	2010	n/a
6	17	new	Renfrew Rd. 40 to Renfrew Rd. 24, Pembroke	Resurfacing/intersection improvements	2008	5.5
7	28	new	Young's Point Rd. to Burleigh Falls	Resurfacing	2008	9.9
8	33	new	Prince Edward Rd. 1, west of Picton	Intersection improvements	2009	n/a
9	34	new	Vankleek Hill to Green Lane Rd.	Reconstruction	2009	9.0
10	37	new	Moira River Bridge, Belleville	Bridge rehabilitation	2009	n/a
11	37	new	CNR overhead, north of Belleville	Bridge rehabilitation	2008	n/a
12	41	new	Cloyne to Bon Echo Bridge	Resurfacing	2009	9.1
13	60	new	Kearney and Headstone Bridges, Whitney	Bridge replacements	2009	n/a
14	62	new	Ivanhoe to Quin-Mo-Lac Rd.	Resurfacing/passing lane	2009	7.1
15	118	new	West Jct. of Haliburton Rd. 648 to east Jct. 648, west of Bancroft	Resurfacing	2008	11.5
16	401	new	CPR overhead at Prescott	Bridge removal	2009	n/a
17	401	new	Northumberland Rd. 30, Brighton	Interchange improvement	2008	n/a
18	401	new	Lennox and Addington Rd. 4 Underpass (Interchange 593), Kingston	Bridge rehabilitation	2008	n/a

NOTE: Project timing is subject to change based on funding, planning, design, environmental approval, property acquisition and construction requirements.

Eastern Ontario Rehabilitation 2008, continued

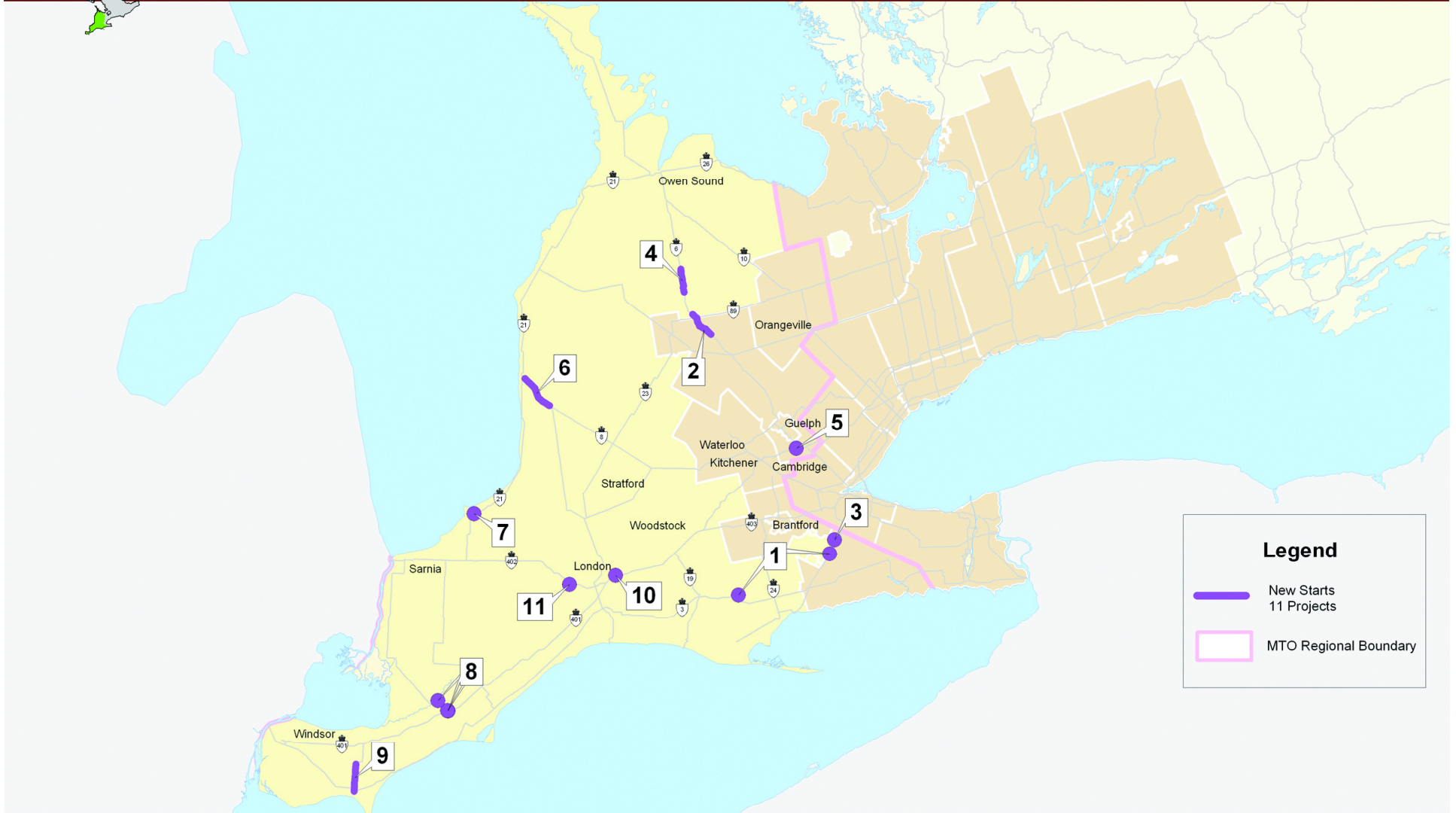
HWY PROJECT #	HWY	STATUS	LOCATION	DESCRIPTION	TARGET COMPLETION	PROJECT LENGTH (KM)
19	401	new	Gananoque River Bridge, Gananoque	Bridge painting	2009	n/a
20	401	new	Trent River Bridge Overpass, Trenton	Bridge rehabilitation/widening	2010	n/a
21	401	new	Upper Canada Rd. to Carman Rd., Morrisburg	Resurfacing	2009	20.5

NOTE: Project timing is subject to change based on funding, planning, design, environmental approval, property acquisition and construction requirements.

This page appears blank intentionally.



Provincial Highways Construction Program - Southwestern Ontario Rehabilitation 2008



Southwestern Ontario Rehabilitation 2008

HWY PROJECT #	HWY	STATUS	LOCATION	DESCRIPTION	TARGET COMPLETION	PROJECT LENGTH (KM)
1	3 and 6	new	Big Creek, Delhi and Boston Creek Bridges, Hagersville	Bridge rehabilitations	2008	n/a
2	6	new	Arthur to Mount Forest	Reconstruction/bridge rehabilitation-replacement/passing lanes	2009	12.5
3	6	new	Argyle St. bridge over the Grand River, Caledonia	Bridge rehabilitation	2008	n/a
4	6	new	Grey Rd. 9 to Durham	Resurfacing/passing lane	2009	10.5
5	6	new	Maltby Rd., Guelph	Highway lighting	2008	n/a
6	8	new	Goderich to Clinton	Reconstruction/intersection improvements	2009	16.8
7	21	new	Lambton Rd. 7, Sarnia	Highway lighting	2008	n/a
8	40	new	McGregor Creek, McGregor Drain and Thames River Bridges, Chatham	Bridge rehabilitations	2008	n/a
9	77	new	Leamington to Staples	Reconstruction	2009	12.3
10	401	new	Highbury Ave. underpass, London	Bridge rehabilitation	2008	n/a
11	402	new	Middlesex Rd. 2, Delaware	Highway lighting	2008	n/a

NOTE: Project timing is subject to change based on funding, planning, design, environmental approval, property acquisition and construction requirements.

Central Ontario Rehabilitation 2009 to 2011

HWY	STATUS	LOCATION	DESCRIPTION	PROJECT LENGTH (KM)
7	new	Thickson Rd. and Durham Rd. 26, Brooklin	Traffic signals	n/a
7A	new	Carnegie St., Manchester	Traffic signals	n/a
8	new	Hwy 5/8 - Peter's Corners, west of Hamilton	Intersection improvements	n/a
11	new	South Jct. of Hwy 12, Simcoe	Traffic signals	n/a
11	new	Vernon Lake Narrows bridge, southbound, Huntsville	Bridge replacement	n/a
11	new	Hwy 169 northerly, Gravenhurst	Resurfacing	6.3
12	new	Atherley (Simcoe Rd. 44) to Gamebridge	Resurfacing	24.6
12	new	Simcoe Rd. 37 to King St., Midland	Resurfacing	3.5
17	new	East of Hwy 533 easterly, Deux-Rivières	Resurfacing/culvert rehabilitations	10.9
17	new	West of Rolphton easterly to Point Alexander	Resurfacing/culvert rehabilitations	19.4
17	new	Bisset Creek easterly to Stonecliffe	Resurfacing	12.5
35	new	Hwy 60 southerly to Muskoka Rd. 117, Dorset	Resurfacing	17.9
48	new	Elgin Mills Rd., Markham	Traffic signals	n/a
60	new	Oxtongue River bridge, east of Dwight	Bridge replacement	n/a
89	new	Nottawasaga River Bridge, Alliston	Bridge rehabilitation	n/a
89	new	West of Simcoe Rd. 13 to Simcoe/Dufferin Boundary	Resurfacing	5.7
93	new	Waverly to South of Hwy 12, Simcoe	Passing lanes/traffic signals	2.0
400	new	Regional Rd. 7 (Hwy 7) to Langstaff Rd.	Resurfacing	2.1

NOTE: Project timing is subject to change based on funding, planning, design, environmental approval, property acquisition and construction requirements.

Central Ontario Rehabilitation 2009 to 2011, continued

HWY	STATUS	LOCATION	DESCRIPTION	PROJECT LENGTH (KM)
400	new	York/Simcoe Boundary to Essa Rd., Barrie	Resurfacing/bridge rehabilitation	36.0
400	new	Hwy 11 to Hwy 93, northbound lanes, Simcoe	Resurfacing/bridge rehabilitation	16.4
400	new	Hwy 93 to Simcoe Rd. 19, northbound lanes, Simcoe	Resurfacing	15.3
400	new	CPR Bridge, northbound lanes, north of Barrie	Bridge rehabilitation	n/a
401	new	Jane St. to Kipling Ave., westbound collector lanes, Toronto	Reconstruction/bridge rehabilitation	3.6
401	new	McLaughlin Rd. to Winston Churchill Blvd., Mississauga	Resurfacing	9.0
401	new	Winston Churchill Blvd. to Trafalgar Rd., Milton	Resurfacing	2.3
401	new	Kennedy Rd. to Pickering, Toronto/Pickering	Overhead signs	n/a
401	new	Markham Rd. to Warden Ave., eastbound express lanes, Toronto	Resurfacing	5.7
401	new	Halton Rd. 25 to Halton/Wellington Boundary, Milton	Resurfacing	12.6
401	new	Jane St. to Avenue Rd., eastbound collector lanes, Toronto	Reconstruction/bridge rehabilitation	7.4
401	new	Warden Ave. to Leslie St., eastbound collector lanes, Toronto	Reconstruction/bridge rehabilitation	4.7
427	new	QEW to Hwy 401, southbound collector lanes, Toronto	Reconstruction/bridge rehabilitation	7.3
427	new	QEW to 401, northbound collector lanes, Toronto	Resurfacing/bridge rehabilitations	7.3
QEW	new	Mcleod Rd., Niagara Falls	Interchange improvements/traffic signals	n/a
QEW	new	Bowen Rd., Fort Erie	Bridge replacement	n/a
various	new	Various Hwys within Central Ontario (annually)	Selective resurfacing	n/a

NOTE: Project timing is subject to change based on funding, planning, design, environmental approval, property acquisition and construction requirements.

Eastern Ontario Rehabilitation 2009 to 2011

HWY	STATUS	LOCATION	DESCRIPTION	PROJECT LENGTH (KM)
7	new	Scott Rd. to Hwy 41, Kaladar	Resurfacing/passing lane	15.2
7	new	Perth, east to west limits	Reconstruction	1.2
7	new	Hwy 115 southbound exit ramp at 7A, west of Peterborough	Traffic signals	1.0
7	new	Hwy 115 to Peterborough Rd.15, Peterborough	Resurfacing/truck climbing lane	3.6
7	new	Hwy 41 Intersection, Kaladar	Intersection improvements	n/a
7	new	Havelock to Norwood	Resurfacing/passing lanes	7.7
7	new	CPR Overhead, Carleton Place	Bridge rehabilitation	n/a
7	new	Wemyss to Sharbot Lake	Resurfacing/passing lanes	12.6
7	new	Marmora to Havelock	Resurfacing	16.0
15	new	Seeley's Bay to Forfar Rd., Crosby	Resurfacing/passing lanes/bridge replacement	27.9
15	new	Hamlet of Portland	Resurfacing/intersection improvements	3.0
17	new	Petawawa River Bridge and CPR Overhead, Petawawa	Bridge rehabilitations	n/a
17	new	Renfrew Rd. 20 to Storyland, Renfrew	Resurfacing	12.5
17	new	Renfrew Rd. 42 to Renfrew Rd. 26, Pembroke	Resurfacing	3.0
28	new	Stoney Lake Rd. to Young's Point	Resurfacing	3.2
28	new	Peterborough Rd.6 to Young's Point	Resurfacing/intersection improvements	1.7
33	new	Speers Ave., Amherstview	Intersection improvement	n/a
35	new	Victoria Rd. 121, Long Beach	Traffic signals	n/a

NOTE: Project timing is subject to change based on funding, planning, design, environmental approval, property acquisition and construction requirements.

Eastern Ontario Rehabilitation 2009 to 2011, continued

HWY	STATUS	LOCATION	DESCRIPTION	PROJECT LENGTH (KM)
37	new	Tweed to Hwy 7	Resurfacing	7.8
41	new	North of Denbigh to Griffith	Resurfacing	8.2
60	new	Bonnechere River Bridge, Deacon	Bridge rehabilitation	n/a
62	new	Hickey Settlement Rd. to Maynooth	Resurfacing	8.0
62	new	Ashley St. to Hasting Rd. 14, Foxboro	Resurfacing/bridge rehabilitation	3.4
62	new	Cleveland Rd. to Hastings Rd. 620, Ormsby	Reconstruction/bridge replacement	17.4
62	new	Quin-Mo-Lac Rd. to Madoc	Reconstruction/bridge rehabilitation/truck climbing lane	4.7
148	new	CPR Overhead Bridge, Pembroke	Bridge rehabilitation	n/a
401	new	CNR Overhead and Boundary Rd. underpass, Cornwall	Bridge deck replacement/rehabilitation	n/a
401	new	East of Augusta, Brockville	Noise barriers	1.0
401	new	Palace Rd. Overpass, Napanee	Bridge replacement	n/a
401	new	Moulinette Rd. and Carman Rd. Underpasses, west of Cornwall	Bridge rehabilitation/replacement	n/a
417	new	8th Line to Russell Rd., Ottawa	Resurfacing/bridge rehabilitation	15.0

NOTE: Project timing is subject to change based on funding, planning, design, environmental approval, property acquisition and construction requirements.

Southwestern Ontario Rehabilitation 2009 to 2011

HWY	STATUS	LOCATION	DESCRIPTION	PROJECT LENGTH (KM)
3	new	John Pound Rd. to Simcoe St., Tillsonburg	Reconstruction/intersection improvements	5.0
3	new	Renton to Jarvis	Resurfacing	9.0
3	new	Grand River Bridge, Cayuga	Bridge replacement/rehabilitation	n/a
3	new	Aylmer to Carter Rd.	Resurfacing	7.2
6	new	Hanlon Expressway, Guelph	Intersection improvements	3.2
6	new	Grand River Bridge, Caledonia By-Pass	Bridge rehabilitation	n/a
7	new	Middlesex Rd. 50 to Perth Rd. 9, St. Marys	Resurfacing/intersection improvements/ truck climbing lane	17.0
7	new	Guelph to Wellington Rd. 28	Resurfacing/bridge rehabilitation/ intersection improvement	7.4
8	new	Seaforth to Mitchell	Reconstruction/bridge rehabilitation	16.2
8	new	Perth Rd. 135 to Stratford	Resurfacing/bridge rehabilitation	7.9
10	new	Dufferin County Rd. 10, north of Orangeville	Intersection improvements	n/a
10	new	Shelbourne to Primrose	Resurfacing	5.0
21	new	Lambton Rd. 79 to Grand Bend	Resurfacing	14.2
21	new	Huron Rd. 84 to Bayfield	Resurfacing	16.0
21	new	Shashawanda Creek Bridge, north of Forest	Bridge replacement	n/a
21	new	Hwy 9 to Tiverton	Reconstruction/traffic signals	12.3
21	new	Goderich to Sheppardton	Reconstruction	9.0
21	new	Beaver Creek, South Pine, Central Pine, Royal Oak, McLean Young and Sauble River Bridges, south of Kincardine	Bridge rehabilitations	n/a

NOTE: Project timing is subject to change based on funding, planning, design, environmental approval, property acquisition and construction requirements.

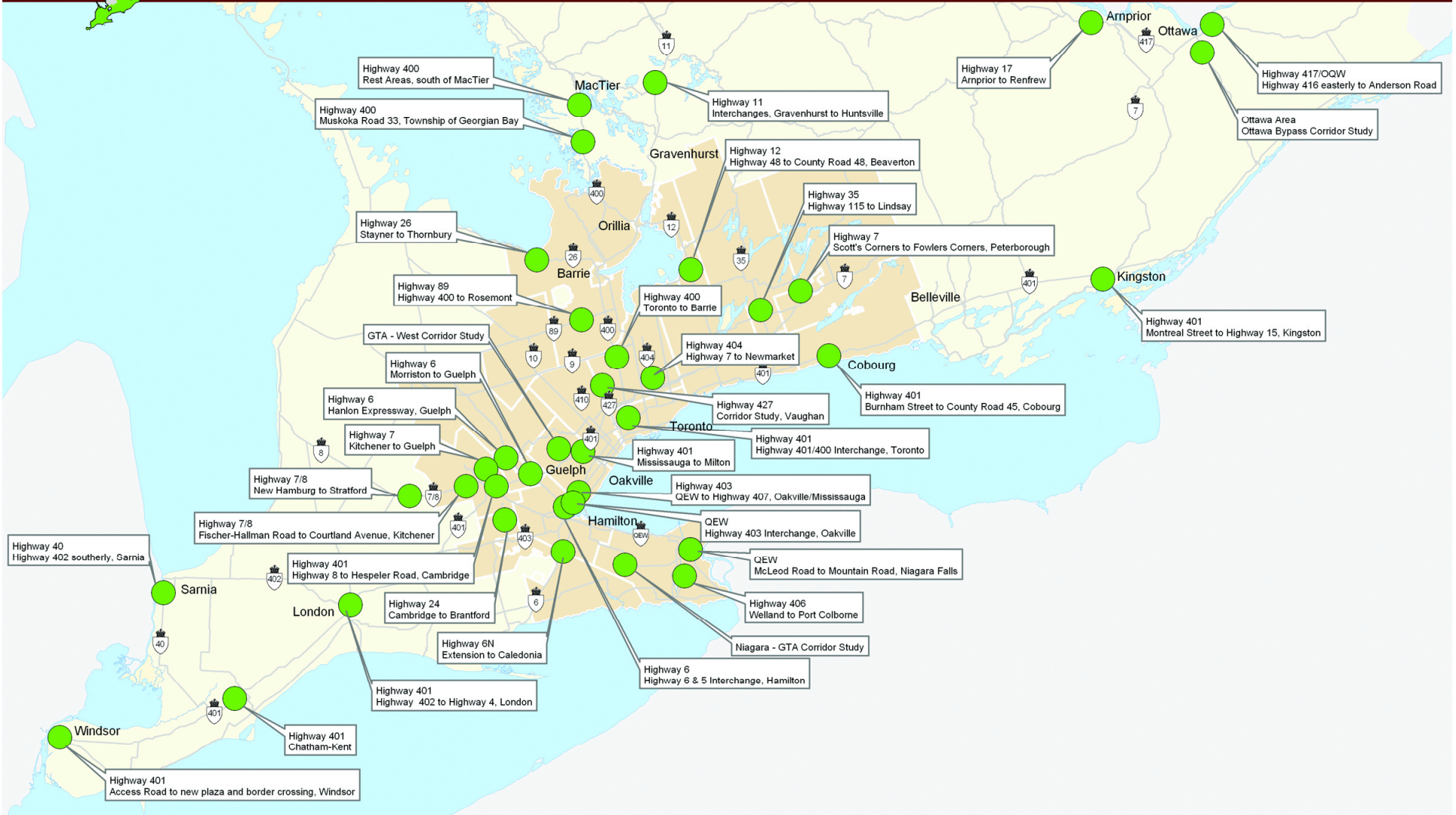
Southwestern Ontario Rehabilitation 2009 to 2011, continued

HWY	STATUS	LOCATION	DESCRIPTION	PROJECT LENGTH (KM)
24	new	Brant Rd. 53 to Hwy 403, west of Brantford	Reconstruction/bridge replacement/intersection improvements	5.6
26	new	Thornbury to Meaford	Resurfacing/passing lane	9.8
26	new	Woodford to Meaford	Resurfacing/truck climbing lane	9.7
40	new	Hwy 401 to Longwoods Rd., south of Chatham	Reconstruction/bridge rehabilitation	7.4
40	new	Wallaceburg to Kent Rd. 33 and Big Creek Bridges # 1,2,3,4,5, Bear Creek, Maxwell Creek and Concession #18 Bridges, north of Chatham	Reconstruction/bridge rehabilitation/replacement	n/a
40	new	Petrolia Line to Churchill Rd., Sarnia	Resurfacing/intersection improvements	5.0
85	new	Lancaster St. to Waterloo Rd.15, Kitchener-Waterloo	Resurfacing/bridge rehabilitations	7.6
401	new	Hwy 4, London	Highway lighting	n/a
401	new	Kent Rd. 2 and Dillon Rd. Underpasses, east of Tilbury	Bridge rehabilitations	n/a
401	new	Dunborough Rd., Blacks Rd., and Furnival Rd. Underpasses, south of London	Bridge rehabilitations	n/a
401	new	Hwy 6, Wellington Rd. 35 and 32 Underpasses, Puslinch Township	Bridge rehabilitations	n/a
402	new	Middlesex Rd. 14, Mount Brydges	Highway lighting	n/a
402	new	Lambton Rd. 22, Lambton Rd. 79 Underpasses, east of Sarnia	Bridge rehabilitations	n/a
403	new	Oak Park Interchange (Partnership with City of Brantford)	Interchange improvement/bridge rehabilitation	n/a

NOTE: Project timing is subject to change based on funding, planning, design, environmental approval, property acquisition and construction requirements.



Provincial Highways Construction Program Planning for the Future



The five-year Southern Highways Program outlines the projects that will be constructed. These projects will ensure that we continue to support growth and address existing highway congestion by expanding and enhancing safety and efficiency on our highways.

The government is very aware of the need to plan for the long term to ensure a first-class transportation infrastructure for the future. The Ministry of Transportation continuously evaluates anticipated transportation needs. Potential future directions include:

- Optimizing, expanding or extending existing highways
- Developing new highway corridors
- Identifying and implementing transportation solutions on strategic transportation corridors
- Evaluating options for transit and other modes of transportation.

Identified below and on the above map (page 44) “Planning for the Future” are some projects in the planning stages to support growth and economic activities, improve traffic flow and enhance safety in Southern Ontario. While the list includes projects that are not part of the current five-year plan, they are subject to further study and prioritization and may be considered for future construction.

- Highway 5/Highway 6 Interchange, Hamilton
- Highway 6 – Morriston to Guelph
- Highway 6 – Hanlon Expressway, Guelph
- Highway 6N – Extension to Caledonia
- Highway 7 – Kitchener to Guelph
- Highway 7 – Scott’s Corners to Fowlers Corners, Peterborough
- Highway 7/8 – New Hamburg to Stratford
- Highway 7/8 – Fischer-Hallman Road to Courtland Avenue, Kitchener
- Highway 11 – Gravenhurst to Huntsville, Interchanges
- Highway 12 – South Junction Highway 48 to North Junction County Road 48, Beaverton
- Highway 17 – Arnprior to Renfrew
- Highway 24 – Cambridge to Brantford
- Highway 26 – Stayner to Thornbury
- Highway 35 – Highway 115 to Lindsay
- Highway 40 – Highway 402 southerly, Sarnia
- Highway 89 – Highway 400 to Rosemont
- Highway 400 – Toronto to Barrie
- Highway 400 – Rest Areas, south of MacTier

continued

Future construction, continued.

- Highway 400 – Muskoka Road 33, Township of Georgian Bay
- Highway 401/Highway 400 Interchange, Toronto
- Highway 401 – Mississauga to Milton
- Highway 401 – Highway 402 to Highway 4, London
- Highway 401 – Chatham-Kent
- Highway 401 – Highway 8 to Hespeler Road, Cambridge
- Highway 401 – Montreal Street to Highway 15, Kingston
- Highway 401 – Burnham Street to County Road 45, Cobourg
- Highway 403 – QEW to Highway 407, Oakville/Mississauga
- Highway 404 – Highway 7 to Newmarket
- Highway 406 – Welland to Port Colborne
- Highway 417/OQW – Highway 416 to Anderson Road
- Highway 427 Corridor Study, Vaughan
- QEW – McLeod Road to Mountain Road, Niagara Falls
- QEW/Highway 403 Interchange, Oakville
- GTA-West Corridor Study
- Niagara-GTA Corridor Study
- Ottawa Bypass Corridor Study

In addition, the Ontario government is working in partnership with Canada, the United States and the State of Michigan on the Detroit River International Crossing, and is committed to working with these partners to deliver a new river crossing, access roads and inspection plazas by 2013.

The planning and construction process for highway expansion can take up to eight years. New transportation corridors take 10 years or even longer to implement. The diagram “Highway Planning Process” illustrates the stages and timeframes associated with major highway construction projects. While this process is lengthy, it is necessary to:

- ensure that the appropriate solution is selected
- reduce the impact of highway construction on Ontario’s environment
- protect the rights of property owners and
- ensure provincial highways meet all design and construction standards.

In the first phase, an environmental assessment (EA) is conducted to consider the natural, economic and social impacts. Highway projects that are relatively small and have predictable and manageable environmental effects are subject to a **Class EA process** which typically takes at least three years to complete and accounts for approximately 95 per cent of the ministry’s infrastructure projects.

The remainder are larger projects with greater environmental impacts, such as new transportation corridors. These are subject to an **Individual EA process** involving extensive analysis of all transportation alternatives (road, transit, rail, marine) and new highway or transitway route location alternatives. This process can take five years to complete and approve.

Planning and preliminary design studies are the first stages in the Class EA process and generally take two to three years to complete. This involves the environmental assessment of broad transportation alternatives and specific highway improvement options.

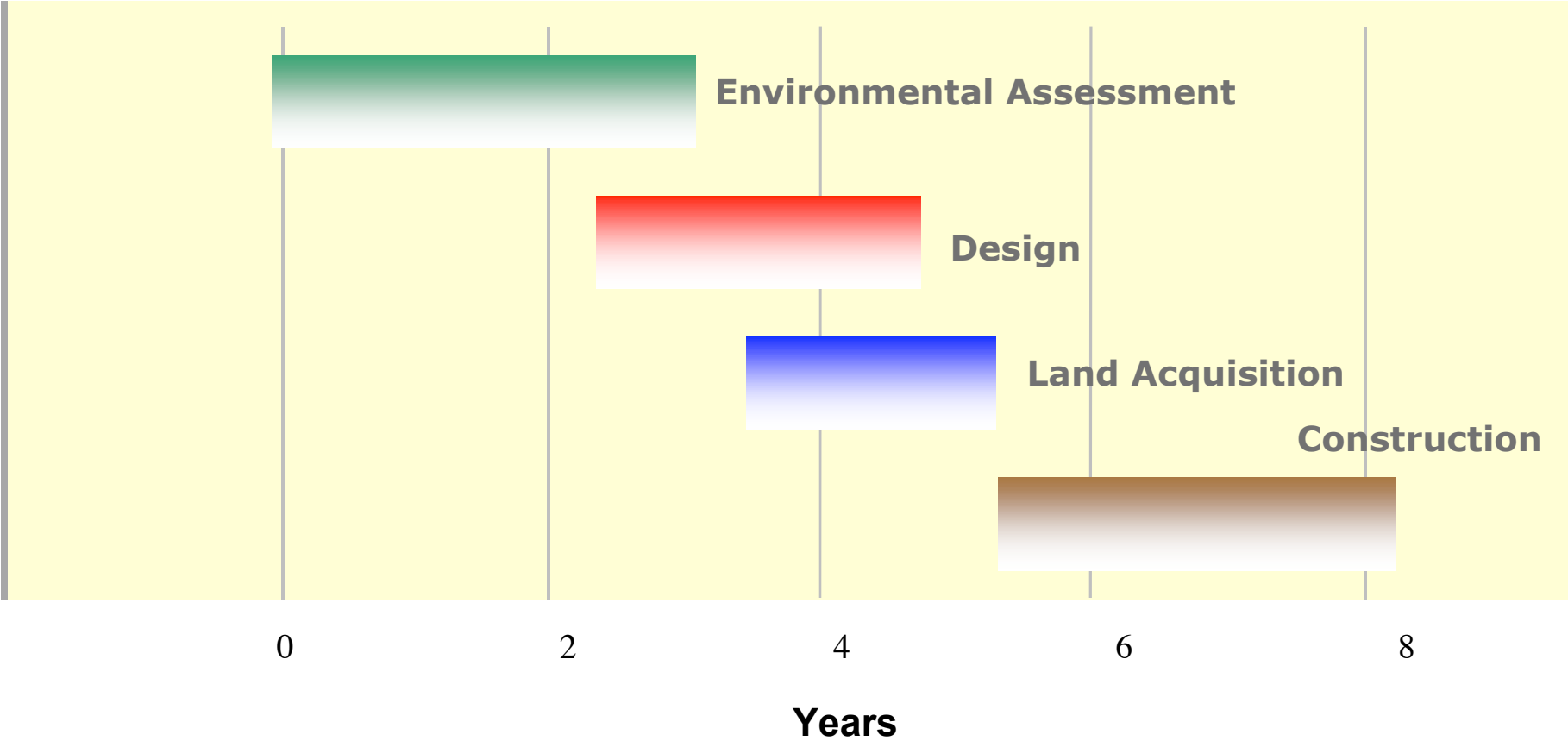
The next stage is **detail design**, which involves engineering work such as surveying, testing for soil conditions, determining construction material requirements and the design of bridges, interchanges and culverts. Once sufficient design has occurred, property acquisition can begin. Design and property acquisition are done simultaneously and can take up to three years.

Property acquisition can take up to 18 months, if expropriation is necessary. If property owners request a Hearing of Necessity, the property acquisition process may take longer and could result in the need for the project to be re-designed. The purpose of a hearing is to determine whether the Ministry of Transportation has sound justification to expropriate the property.

Highway construction depends on the size of the project, property availability and the timing of various environmental clearances or permits. Building a new four-lane highway is completed in stages, taking two to three years for each 10-kilometre section. Completion of some highway sections may be delayed because of legislated restrictions on construction during fish spawning periods, nesting periods for birds or other reasons. Much of the construction work is done at night and during off-peak hours to minimize delays.

The Ministry of Transportation works collaboratively with a wide range of provincial ministry and federal departments, municipalities, transportation, economic and environmental interest groups, First Nation communities and the general public during all phases of the highway planning process.

Typical Timelines for Highway Expansion Projects



Completed Expansion Projects

Central Ontario

HWY	LOCATION	DESCRIPTION
403	Hwy 401 to Hwy 407, Mississauga (HOV Lanes)	Widening
QEW	Red Hill Valley Parkway Interchange - Connection to QEW, Phase 2 of 3, Hamilton	New interchange and advance grading
Various	Permanent Counting Stations (SHIP)	New traffic count stations

Southwestern Ontario

HWY	LOCATION	DESCRIPTION
401	Windsor to Tilbury - Phase 2 of 5 - Manning Rd. to Puce Rd. (SHIP)	Four to six-lane widening

Northeastern Ontario

HWY	LOCATION	DESCRIPTION
69/400	Silver Sands Rd., south of MacTier (Wahta First Nation)	Realignment
Various	Permanent Counting Stations (SHIP)	New traffic count stations

Completed Rehabilitation Projects

Central Ontario

HWY	LOCATION	DESCRIPTION
7	Brock Township 2nd Line to Hwy 7/12, west of Peterborough	Reconstruction/bridge replacement/traffic signals
7	Manchester to Brooklin	Resurfacing/truck climbing lanes
12	Orillia to Prices Corners	Resurfacing
35	South of south Junction County Road 121 northerly, Carnarvon	Reconstruction/passing lanes
48	Mount Albert and Black River Bridges	Bridge replacement/rehabilitation
58	Thorold - CNR Underpass	Bridge painting
58/58A	Hwy 3 to Forks Rd. and Hwy 58 to Netherby Rd., Welland	Resurfacing
140	Regional Rd. 27 (East Main St.), Welland	Intersection improvements
141	East of Hwy 400 easterly, Rosseau	Resurfacing
400	Maple Leaf Dr. to Hwy 401, Toronto	Resurfacing/median barrier replacement
400	Hwy 89 to Innisfil	Guide rail repairs
400	North of Canal Rd. to Barrie	Catch basin repairs
401	Mavis Rd., Mississauga	Ramp improvements
404	Aurora Rd. 15/York Rd. 15 - York Region	Traffic signals
404	Bloomington Rd. and Stouffville Rd., York Region	Traffic signals
420	Montrose Rd., Niagara Falls	Intersection improvements
427	QEW to Hwy 401, southbound express lanes, Toronto	Reconstruction
QEW	Third Line to Hwy 427	COMPASS improvements
QEW	Dixie Rd. to Hwy 427, Mississauga	Resurfacing
QEW	Garden City Skyway Bridge, St. Catharines	Pier repairs

Completed Rehabilitation Projects

Eastern Ontario

HWY	LOCATION	DESCRIPTION
7	Parkhill Rd., Peterborough	Intersection improvements
15	Washburn Rd. to Frontenac Leeds Boundary	Resurfacing/passing lanes
28	Young's Point Bridge, north of Peterborough	Bridge rehabilitation
41	Peterson Rd., Northbrook	Intersection improvements
60	Douglas to Eganville	Resurfacing
60	Barry's Bay to Arbor Vitae Rd.	Resurfacing/truck climbing lanes
401	Moulinette Rd. to Boundary Rd., Cornwall	Resurfacing
401	Donovan Creek Bridge, east of Gananoque	Bridge rehabilitation
401	County Rd. 34 to Quebec-Ontario Boundary	Resurfacing/bridge rehabilitation
401	County Rd. 41, Napanee	Intersection improvements
401	Salmon River Bridge, 4km west of Hwy 49 (SHIP)	Bridge rehabilitation
401	Northumberland Rd. 30 Underpass, Brighton	Bridge rehabilitation
417	Nicholas St. to Woodroffe Ave., Ottawa	Resurfacing

Completed Rehabilitation Projects

Southwestern Ontario

HWY	LOCATION	DESCRIPTION
3	St. Thomas to Aylmer	Reconstruction/bridge rehabilitation
6	CPR Overhead Bridge, Puslinch	Bridge replacement
6	Lynn River Lift Bridge, Port Dover	Bridge rehabilitation
19	Mount Elgin to Hwy 401	Reconstruction/ commuter parking lot
21	Kingsbridge to Amberley	Culvert rehabilitation/ replacements
24	South Jct. of Brant Rd. 4 to west Jct. of Brant Rd. 53	Reconstruction
26	Owen Sound to Woodford	Reconstruction/truck climbing lane
401	Culloden Rd. Interchange, Ingersoll	Interchange improvement
401	Dorchester Rd. to Highbury Ave., London	Resurfacing
401	Mull Rd. and Highgate Sideroad Underpasses, Ridgetown	Bridge rehabilitations
402	Lambton Rd. 22, Arkona Rd., First School Rd., Hwy 21, Uttoxeter Rd. and County Rd. 79 Bridges	Bridge rehabilitations
403	County Rd. 18 (former Hwy 403) from Henry St. to Cainsville, Brantford	Work by county - resurfacing/ bridge rehabilitation

