



Workplace Safety &
Insurance Board

Commission de la sécurité
professionnelle et de l'assurance
contre les accidents du travail

www.wsib.on.ca



interacting with you

statistical supplement to the 2002 annual report



Table | of contents

| | | | |
|----|--|----|--|
| 3 | Introduction | 20 | Fatality Claims: Tables 14 and 15 |
| 4 | Claim Volumes: Tables 1 to 4 | 21 | <i>Table 14:</i> fatality claims by year of registration (1993 to 2002) |
| 5 | <i>Table 1:</i> claims registered by year of registration (1993 to 2002) | 22 | <i>Table 15:</i> occupational fatality claims by year allowed (1993 to 2002) |
| 6 | <i>Table 2:</i> claims registered by year of injury or illness, industry sector and business size (1997 to 2002) | 23 | Average Duration of Wage Loss Benefits: Table 16 |
| 7 | <i>Table 3:</i> claims registered by year of injury or illness and claim status (1993 to 2002) | 24 | <i>Table 16:</i> average duration of wage loss benefits by year of injury or illness (1993 to 2002) |
| 8 | <i>Table 4:</i> claims registered by year of injury or illness and claim status - matured data (1993 to 2002) | 25 | Future Economic Loss (FEL) Awards: Table 17 |
| 9 | Detailed Claims Profiles: Tables 5 to 13 | 26 | <i>Table 17:</i> active future economic loss (FEL) awards by percentage of wage loss and active supplements (1993 to 2002) |
| 10 | <i>Table 5:</i> lost time claims by age group (1993 to 2002) | 27 | Non-economic Loss (NEL) Awards: Table 18 |
| 10 | <i>Table 6:</i> lost time claims by gender (1993 to 2002) | 28 | <i>Table 18:</i> non-economic loss (NEL) awards by percentage of permanent impairment (1993 to 2002) |
| 11 | <i>Table 7:</i> lost time claims by industry sector (1993 to 2002) | 29 | Periodic Pensions and Supplements: Tables 19 and 20 |
| 12 | <i>Table 8:</i> lost time claims by nature of injury and disease (1996 to 2002) | 30 | <i>Table 19:</i> periodic pensions awarded by percentage of permanent disability and supplements awarded (1993 to 2002) |
| 14 | <i>Table 9:</i> lost time claims by part of body affected (1996 to 2002) | 31 | <i>Table 20:</i> active periodic pensions by percentage of permanent disability and active supplements (1993 to 2002) |
| 15 | <i>Table 10:</i> lost time claims by event (1996 to 2002) | | |
| 16 | <i>Table 11:</i> lost time claims by source of injury or disease (1996 to 2002) | | |
| 18 | <i>Table 12:</i> lost time claims by occupation (1996 to 2002) | | |
| 19 | <i>Table 13:</i> lost time claims by Standard Industrial Classification (SIC) (1996 to 2002) | | |

Introduction

This publication is a supplement to the Workplace Safety and Insurance Board's 2002 Annual Report. It contains aggregate work-related injury and illness claims and benefits data for 2002. Tables contain data for previous years for comparison where such data is available and appropriate.

Ontario's Workplace Safety and Insurance Board (WSIB) is committed to the prevention of workplace injuries and illnesses. We play a key role in the province's occupational health and safety system; promoting workplace safety and administering the no-fault workplace insurance plan under the *Workplace Safety and Insurance Act* for employers and their workers.

We provide insurance benefits, pay for and monitor the quality of health care, and assist in early and safe return to work and labour market re-entry for workers who are injured on the job or contract an occupational disease. We also provide benefits to survivors of workers who die due to workplace injuries or illnesses.

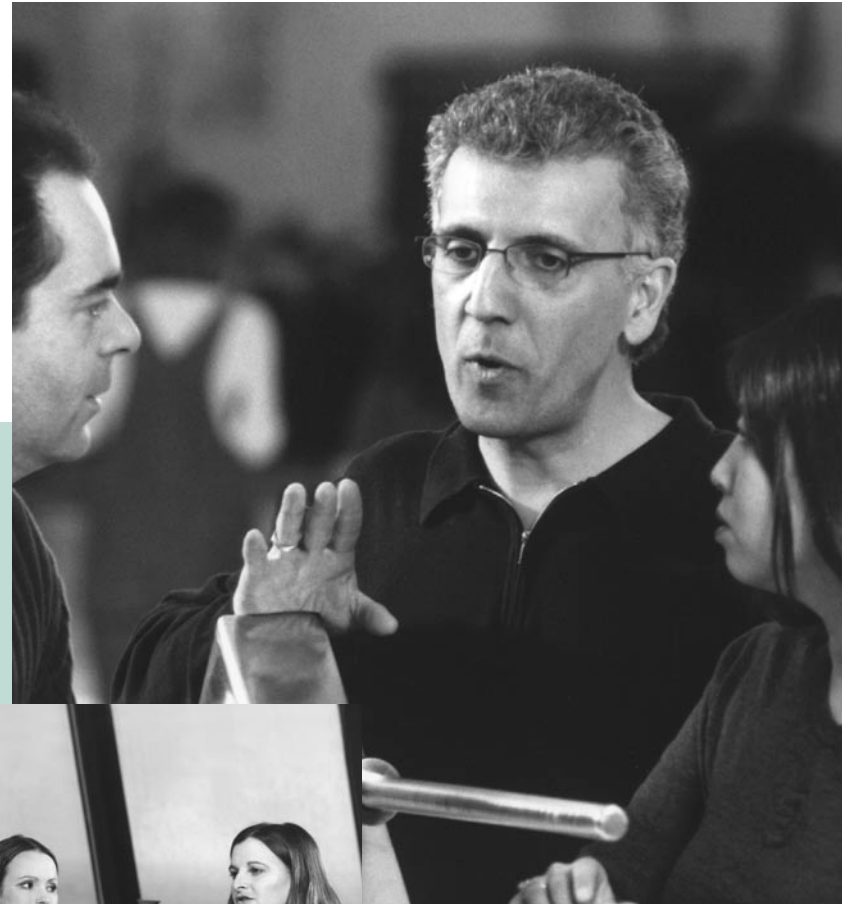
Phone: (416) 344-1000 or 1 800 387-5540

TTY: 1 800 387-0050

E-mail: wsibcomm@wsib.on.ca

The 2002 Annual Report and Statistical Supplement are also available on the WSIB Web site at www.wsib.on.ca

Pour obtenir ces renseignements en français composez le 1-800-465-5606



Top: Members of a WSIB service delivery team (left to right) **Mino Coffa**, Adjudicator, **Mike Palmieri**, Adjudicator, and **Linda Louie**, Customer Service Representative, discuss how to approach claims better from a team perspective.

Below: WSIB Account Manager **Laura Gabriel** (right) meets with CN Tower staff **Alison Demaline** (centre) and **Christine Brownlie**. The WSIB has found it's better to meet regularly with clients to help resolve any issues.

Claims Volumes

Tables 1 to 4

These tables show the claims for benefits that resulted from workplace injuries and illnesses in Ontario.

Delays in reporting, and processing times for some complex claims, affect the reporting of claims data for any given year. Data continues to be revised after the year has concluded as additional claims are reported and decisions on complex claims are made. The revision of data after the year has concluded is called “maturing.”

Table 1 lists total numbers of claims by the year they are registered.

Tables 2, 3, and 4 present total numbers of claims according to the year in which the injuries and illnesses occurred. Table 2 provides a snapshot of the number of injuries and illnesses by industry sector and business size for each year as at March 31 of the following year.

Table 3 provides a snapshot of claims by claim status for each year

as at March 31 of the following year.

Table 4 presents injury and illness data for each year as at 15 months after the end of each year, when data is likely to be fully mature. 2002 numbers in Table 4 are estimates.

Employers covered by the *Workplace Safety and Insurance Act* are categorized as either Schedule 1 or Schedule 2 employers. Schedule 1 employers pay premiums into an insurance fund administered by the WSIB. Benefits for injured and ill workers under the *Workplace Safety and Insurance Act* are paid for by this fund, which is administered by the WSIB. The majority of Ontario’s employers are Schedule 1 employers. Schedule 2 employers are directly liable for the cost of benefits for their injured and ill workers. Schedule 2 employers include municipal, provincial and federal governments, railways, airlines, and telephone companies.

TABLE 1: CLAIMS REGISTERED BY YEAR OF REGISTRATION (1993 to 2002)

This table shows the total number of claims registered with the WSIB by year. Some claims are registered with the WSIB after the year in which the injury, illness or fatality occurred. This table shows prior-year and current-year injury or illness claim registrations, as well as total registrations for each year.

Numbers include all claims reported to the WSIB for each year: claims allowed, claims denied, claims abandoned and claims pending.

| | Year of registration | | | | | | | | | | | | | | | | | | | |
|---|----------------------|------|---------|------|---------|------|---------|------|---------|------|---------|------|---------|------|---------|------|---------|------|---------|------|
| | 1993 | % | 1994 | % | 1995 | % | 1996 | % | 1997 | % | 1998 | % | 1999 | % | 2000 | % | 2001 | % | 2002 | % |
| Injuries and illnesses in current year | 351,486 | 95% | 356,236 | 96% | 354,449 | 95% | 327,248 | 95% | 326,932 | 96% | 326,405 | 95% | 346,639 | 95% | 363,380 | 96% | 352,775 | 95% | 345,879 | 96% |
| Injuries and illnesses in prior years | 16,999 | 5% | 14,208 | 4% | 17,388 | 5% | 18,358 | 5% | 14,246 | 4% | 16,282 | 5% | 17,430 | 5% | 15,717 | 4% | 18,292 | 5% | 15,300 | 4% |
| Total registrations | 368,485 | 100% | 370,444 | 100% | 371,837 | 100% | 345,606 | 100% | 341,178 | 100% | 342,687 | 100% | 364,069 | 100% | 379,097 | 100% | 371,067 | 100% | 361,179 | 100% |

TABLE 2: CLAIMS REGISTERED BY YEAR OF INJURY OR ILLNESS, INDUSTRY SECTOR AND BUSINESS SIZE (1997 to 2002)

In 1997, the WSIB organized its operations to serve 17 industry sectors (Schedule 2 is a separate industry sector). This table shows injury and illness numbers by industry sector and business size for each year as at March 31 of the following year. All Schedule 2 employers have been included under “large business” in this table (number-of-employees data is not available for Schedule 2 employers).

| Industry Sector | Year of injury or illness | | | | | | | | | | | | | | | | | | | | | | | |
|----------------------|---|--|---------|-------|---|--|---------|-------|---|--|---------|-------|---|--|---------|-------|---|--|---------|-------|---|--|---------|-------|
| | 1997 | | | | 1998 | | | | 1999 | | | | 2000 | | | | 2001 | | | | 2002 | | | |
| | Small business (employers with fewer than 20 employees) | Large business (employers with 20 or more employees) | Total | % | Small business (employers with fewer than 20 employees) | Large business (employers with 20 or more employees) | Total | % | Small business (employers with fewer than 20 employees) | Large business (employers with 20 or more employees) | Total | % | Small business (employers with fewer than 20 employees) | Large business (employers with 20 or more employees) | Total | % | Small business (employers with fewer than 20 employees) | Large business (employers with 20 or more employees) | Total | % | Small business (employers with fewer than 20 employees) | Large business (employers with 20 or more employees) | Total | % |
| Agriculture | 2,894 | 1,833 | 4,727 | 1.4% | 2,739 | 2,084 | 4,823 | 1.4% | 2,616 | 2,165 | 4,781 | 1.3% | 2,572 | 2,345 | 4,917 | 1.3% | 2,685 | 2,408 | 5,093 | 1.4% | 2,551 | 2,368 | 4,919 | 1.4% |
| Automotive | 328 | 29,114 | 29,442 | 8.7% | 345 | 27,715 | 28,060 | 8.2% | 398 | 32,129 | 32,527 | 9.1% | 385 | 38,933 | 39,318 | 10.4% | 429 | 35,445 | 35,874 | 9.9% | 375 | 33,840 | 34,215 | 9.6% |
| Chemical/Process | 595 | 7,979 | 8,574 | 2.5% | 629 | 8,631 | 9,260 | 2.7% | 659 | 9,217 | 9,876 | 2.8% | 626 | 9,820 | 10,446 | 2.8% | 589 | 9,544 | 10,133 | 2.8% | 538 | 9,141 | 9,679 | 2.7% |
| Construction | 10,826 | 10,874 | 21,700 | 6.4% | 10,554 | 11,265 | 21,819 | 6.4% | 10,771 | 12,590 | 23,361 | 6.5% | 11,372 | 14,242 | 25,614 | 6.8% | 11,409 | 15,157 | 26,566 | 7.3% | 11,428 | 16,392 | 27,820 | 7.8% |
| Education | 84 | 4,034 | 4,118 | 1.2% | 83 | 3,815 | 3,898 | 1.1% | 100 | 3,389 | 3,489 | 1.0% | 89 | 3,023 | 3,112 | 0.8% | 80 | 2,910 | 2,990 | 0.8% | 91 | 2,866 | 2,957 | 0.8% |
| Electrical Utilities | 362 | 1,190 | 1,552 | 0.5% | 389 | 1,178 | 1,567 | 0.5% | 324 | 1,207 | 1,531 | 0.4% | 277 | 1,345 | 1,622 | 0.4% | 279 | 1,562 | 1,841 | 0.5% | 878 | 1,862 | 2,740 | 0.8% |
| Food | 896 | 10,568 | 11,464 | 3.4% | 823 | 10,819 | 11,642 | 3.4% | 772 | 12,043 | 12,815 | 3.6% | 735 | 12,859 | 13,594 | 3.6% | 701 | 13,073 | 13,774 | 3.8% | 632 | 13,266 | 13,898 | 3.9% |
| Forestry | 597 | 2,888 | 3,485 | 1.0% | 576 | 3,221 | 3,797 | 1.1% | 609 | 3,532 | 4,141 | 1.2% | 703 | 4,045 | 4,748 | 1.3% | 653 | 3,458 | 4,111 | 1.1% | 617 | 3,852 | 4,469 | 1.3% |
| Health Care | 655 | 20,110 | 20,765 | 6.1% | 642 | 19,639 | 20,281 | 6.0% | 529 | 21,091 | 21,620 | 6.0% | 572 | 23,500 | 24,072 | 6.4% | 611 | 24,184 | 24,795 | 6.8% | 651 | 25,603 | 26,254 | 7.3% |
| Manufacturing | 11,208 | 65,261 | 76,469 | 22.5% | 10,894 | 66,768 | 77,662 | 22.8% | 10,467 | 69,647 | 80,114 | 22.4% | 10,937 | 72,139 | 83,076 | 22.0% | 9,854 | 64,110 | 73,964 | 20.3% | 9,353 | 58,373 | 67,726 | 18.9% |
| Mining | 352 | 2,868 | 3,220 | 0.9% | 374 | 2,744 | 3,118 | 0.9% | 325 | 2,683 | 3,008 | 0.8% | 377 | 2,448 | 2,825 | 0.7% | 328 | 2,536 | 2,864 | 0.8% | 302 | 2,349 | 2,651 | 0.7% |
| Municipal | 404 | 3,271 | 3,675 | 1.1% | 309 | 3,313 | 3,622 | 1.1% | 256 | 3,076 | 3,332 | 0.9% | 237 | 3,073 | 3,310 | 0.9% | 196 | 3,028 | 3,224 | 0.9% | 220 | 2,979 | 3,199 | 0.9% |
| Pulp and Paper | 39 | 3,021 | 3,060 | 0.9% | 60 | 2,734 | 2,794 | 0.8% | 52 | 2,694 | 2,746 | 0.8% | 57 | 2,785 | 2,842 | 0.8% | 63 | 2,678 | 2,741 | 0.8% | 53 | 2,530 | 2,583 | 0.7% |
| Services | 14,387 | 61,037 | 75,424 | 22.2% | 14,200 | 63,217 | 77,417 | 22.8% | 13,245 | 66,674 | 79,919 | 22.3% | 13,623 | 69,067 | 82,690 | 21.9% | 13,061 | 67,745 | 80,806 | 22.2% | 13,078 | 68,855 | 81,933 | 22.9% |
| Steel | 314 | 9,396 | 9,710 | 2.9% | 251 | 9,931 | 10,182 | 3.0% | 282 | 9,858 | 10,140 | 2.8% | 225 | 8,920 | 9,145 | 2.4% | 210 | 8,325 | 8,535 | 2.3% | 157 | 8,020 | 8,177 | 2.3% |
| Transportation | 3,806 | 17,794 | 21,600 | 6.4% | 3,543 | 18,436 | 21,979 | 6.5% | 3,487 | 20,487 | 23,974 | 6.7% | 3,753 | 21,218 | 24,971 | 6.6% | 3,488 | 20,744 | 24,232 | 6.7% | 3,579 | 20,186 | 23,765 | 6.6% |
| Subtotal | 47,747 | 251,238 | 298,985 | 88.1% | 46,411 | 255,510 | 301,921 | 88.7% | 44,892 | 272,482 | 317,374 | 88.7% | 46,540 | 289,762 | 336,302 | 89.1% | 44,636 | 276,907 | 321,543 | 88.4% | 44,503 | 272,482 | 316,985 | 88.7% |
| Schedule 2 | NA | 40,491 | 40,491 | 11.9% | NA | 38,283 | 38,283 | 11.3% | NA | 40,530 | 40,530 | 11.3% | NA | 41,216 | 41,216 | 10.9% | NA | 42,161 | 42,161 | 11.6% | NA | 40,434 | 40,434 | 11.3% |
| Grand Total | 47,747 | 291,729 | 339,476 | 100% | 46,411 | 293,793 | 340,204 | 100% | 44,892 | 313,012 | 357,904 | 100% | 46,540 | 330,978 | 377,518 | 100% | 44,636 | 319,068 | 363,704 | 100% | 44,503 | 312,916 | 357,419 | 100% |

TABLE 3: CLAIMS REGISTERED BY YEAR OF INJURY OR ILLNESS AND CLAIM STATUS (1993 to 2002)

This table shows injury and illness numbers by claim status for each year. Claim status is as at March 31 of the following year.

Lost time claims are claims by workers who have lost wages. No lost time claims are claims by workers who have not lost wages as a result of temporary or permanent impairment. Denied claims are claims for injuries or illnesses that were not work related, and claims by workers who were not covered under the *Workplace Safety and Insurance Act*. Abandoned claims are claims that have been withdrawn by the worker and claims for which the WSIB could not gather sufficient information to make an entitlement decision. Pending claims are claims about which a decision has not yet been made.

| Status as at March 31 of the following year | Year of injury or illness | | | | | | | | | | | | | | | | | | | |
|---|---------------------------|-------------|----------------|-------------|----------------|-------------|----------------|-------------|----------------|-------------|----------------|-------------|----------------|-------------|----------------|-------------|----------------|-------------|----------------|-------------|
| | 1993 | % | 1994 | % | 1995 | % | 1996 | % | 1997 | % | 1998 | % | 1999 | % | 2000 | % | 2001 | % | 2002 | % |
| SCHEDULE 1 | | | | | | | | | | | | | | | | | | | | |
| Allowed lost time | 105,885 | 34% | 106,561 | 33% | 101,589 | 31% | 87,789 | 30% | 86,641 | 29% | 83,365 | 28% | 85,778 | 27% | 88,949 | 26% | 83,250 | 26% | 80,989 | 26% |
| Allowed no lost time | 160,999 | 51% | 157,982 | 49% | 164,913 | 51% | 155,431 | 52% | 151,789 | 51% | 150,829 | 50% | 162,188 | 51% | 173,379 | 52% | 167,623 | 52% | 168,268 | 53% |
| Denied | 9,505 | 3% | 10,081 | 3% | 11,008 | 3% | 10,354 | 3% | 9,109 | 3% | 9,245 | 3% | 9,932 | 3% | 11,310 | 3% | 11,275 | 4% | 11,380 | 4% |
| Abandoned | 35,774 | 11% | 43,857 | 14% | 43,345 | 13% | 40,432 | 14% | 47,362 | 16% | 54,134 | 18% | 55,783 | 18% | 58,816 | 18% | 55,890 | 17% | 53,337 | 17% |
| Pending | 2,369 | 1% | 3,360 | 1% | 3,023 | 1% | 2,329 | 1% | 3,704 | 1% | 3,991 | 1% | 3,457 | 1% | 3,532 | 1% | 3,297 | 1% | 2,925 | 1% |
| Subtotal | 314,532 | 100% | 321,841 | 100% | 323,878 | 100% | 296,335 | 100% | 298,605 | 100% | 301,564 | 100% | 317,138 | 100% | 335,986 | 100% | 321,335 | 100% | 316,899 | 100% |
| SCHEDULE 2 | | | | | | | | | | | | | | | | | | | | |
| Allowed lost time | 19,237 | 41% | 19,083 | 40% | 17,225 | 38% | 15,291 | 37% | 15,165 | 37% | 13,825 | 36% | 14,948 | 37% | 15,205 | 37% | 15,109 | 36% | 14,579 | 36% |
| Allowed no lost time | 19,376 | 42% | 19,040 | 40% | 18,734 | 42% | 17,470 | 42% | 16,674 | 41% | 16,004 | 41% | 16,598 | 41% | 17,170 | 41% | 17,376 | 41% | 16,893 | 42% |
| Denied | 1,826 | 4% | 1,985 | 4% | 2,150 | 5% | 2,089 | 5% | 1,860 | 5% | 1,523 | 4% | 1,558 | 4% | 1,744 | 4% | 1,930 | 5% | 1,822 | 4% |
| Abandoned | 5,724 | 12% | 6,559 | 14% | 6,284 | 14% | 6,095 | 15% | 6,406 | 16% | 6,570 | 17% | 6,959 | 17% | 6,632 | 16% | 7,140 | 17% | 6,627 | 16% |
| Pending | 472 | 1% | 642 | 1% | 592 | 1% | 412 | 1% | 766 | 2% | 718 | 2% | 703 | 2% | 781 | 2% | 814 | 2% | 599 | 1% |
| Subtotal | 46,635 | 100% | 47,309 | 100% | 44,985 | 100% | 41,357 | 100% | 40,871 | 100% | 38,640 | 100% | 40,766 | 100% | 41,532 | 100% | 42,369 | 100% | 40,520 | 100% |
| SCHEDULES 1 AND 2 | | | | | | | | | | | | | | | | | | | | |
| Allowed lost time | 125,122 | 35% | 125,644 | 34% | 118,814 | 32% | 103,080 | 31% | 101,806 | 30% | 97,190 | 29% | 100,726 | 28% | 104,154 | 28% | 98,359 | 27% | 95,568 | 27% |
| Allowed no lost time | 180,375 | 50% | 177,022 | 48% | 183,647 | 50% | 172,901 | 51% | 168,463 | 50% | 166,833 | 49% | 178,786 | 50% | 190,549 | 50% | 184,999 | 51% | 185,161 | 52% |
| Denied | 11,331 | 3% | 12,066 | 3% | 13,158 | 4% | 12,443 | 4% | 10,969 | 3% | 10,768 | 3% | 11,490 | 3% | 13,054 | 3% | 13,205 | 4% | 13,202 | 4% |
| Abandoned | 41,498 | 11% | 50,416 | 14% | 49,629 | 13% | 46,527 | 14% | 53,768 | 16% | 60,704 | 18% | 62,742 | 18% | 65,448 | 17% | 63,030 | 17% | 59,964 | 17% |
| Pending | 2,841 | 1% | 4,002 | 1% | 3,615 | 1% | 2,741 | 1% | 4,470 | 1% | 4,709 | 1% | 4,160 | 1% | 4,313 | 1% | 4,111 | 1% | 3,524 | 1% |
| Total | 361,167 | 100% | 369,150 | 100% | 368,863 | 100% | 337,692 | 100% | 339,476 | 100% | 340,204 | 100% | 357,904 | 100% | 377,518 | 100% | 363,704 | 100% | 357,419 | 100% |

TABLE 4: CLAIMS REGISTERED BY YEAR OF INJURY OR ILLNESS AND CLAIM STATUS - MATURED DATA (1993 to 2002)

This table shows injury and illness numbers by claim status for each year. Claim status is as at 15 months after the end of the year in which the injury or illness occurred. 2002 data have been estimated based on prior experience and the probable disposition of new and pending claims.

| Status as at March 31 of the second year after year of injury or illness | Year of injury or illness | | | | | | | | | | | | | | | | | | | |
|--|---------------------------|-----|---------|-----|---------|-----|---------|-----|---------|-----|---------|-----|---------|-----|---------|-----|---------|-----|---------|-----|
| | 1993 | % | 1994 | % | 1995 | % | 1996 | % | 1997 | % | 1998 | % | 1999 | % | 2000 | % | 2001 | % | 2002 | % |
| SCHEDULE 1 | | | | | | | | | | | | | | | | | | | | |
| Allowed lost time | 107,189 | 34% | 108,876 | 34% | 103,431 | 32% | 89,406 | 30% | 88,906 | 30% | 85,683 | 28% | 88,161 | 28% | 91,544 | 27% | 85,710 | 27% | 83,380 | 26% |
| Allowed no lost time | 159,950 | 51% | 158,431 | 49% | 165,250 | 51% | 155,710 | 52% | 152,985 | 51% | 152,286 | 50% | 163,425 | 51% | 174,131 | 52% | 168,336 | 52% | 168,958 | 53% |
| Denied | 10,208 | 3% | 11,210 | 3% | 12,176 | 4% | 11,169 | 4% | 10,435 | 3% | 10,390 | 3% | 10,998 | 3% | 11,772 | 3% | 12,116 | 4% | 12,286 | 4% |
| Abandoned | 35,520 | 11% | 43,867 | 14% | 43,139 | 13% | 40,507 | 14% | 47,447 | 16% | 54,586 | 18% | 56,192 | 18% | 59,848 | 18% | 56,452 | 17% | 53,780 | 17% |
| SCHEDULE 2 | | | | | | | | | | | | | | | | | | | | |
| Allowed lost time | 20,834 | 42% | 19,876 | 41% | 18,027 | 39% | 16,035 | 38% | 15,762 | 38% | 14,374 | 37% | 15,497 | 38% | 15,863 | 38% | 15,797 | 37% | 15,009 | 37% |
| Allowed no lost time | 21,053 | 42% | 19,562 | 41% | 19,407 | 42% | 17,872 | 42% | 16,838 | 41% | 16,288 | 42% | 16,759 | 41% | 17,309 | 41% | 17,597 | 41% | 16,962 | 42% |
| Denied | 2,063 | 4% | 2,232 | 5% | 2,476 | 5% | 2,299 | 5% | 2,159 | 5% | 1,730 | 4% | 1,786 | 4% | 1,928 | 5% | 2,151 | 5% | 1,967 | 5% |
| Abandoned | 5,885 | 12% | 6,544 | 14% | 6,345 | 14% | 6,098 | 14% | 6,266 | 15% | 6,567 | 17% | 6,926 | 17% | 6,680 | 16% | 7,154 | 17% | 6,682 | 16% |
| SCHEDULES 1 AND 2 | | | | | | | | | | | | | | | | | | | | |
| Allowed lost time | 128,023 | 35% | 128,752 | 35% | 121,458 | 33% | 105,441 | 31% | 104,668 | 31% | 100,057 | 29% | 103,658 | 29% | 107,407 | 28% | 101,507 | 28% | 98,389 | 27% |
| Allowed no lost time | 181,003 | 50% | 177,993 | 48% | 184,657 | 50% | 173,582 | 51% | 169,823 | 50% | 168,574 | 49% | 180,184 | 50% | 191,440 | 51% | 185,933 | 51% | 185,920 | 52% |
| Denied | 12,271 | 3% | 13,442 | 4% | 14,652 | 4% | 13,468 | 4% | 12,594 | 4% | 12,120 | 4% | 12,784 | 4% | 13,700 | 4% | 14,267 | 4% | 14,253 | 4% |
| Abandoned | 41,405 | 11% | 50,411 | 14% | 49,484 | 13% | 46,605 | 14% | 53,713 | 16% | 61,153 | 18% | 63,118 | 18% | 66,528 | 18% | 63,606 | 17% | 60,462 | 17% |

Detailed Claims Profiles

Tables 5 to 13

These tables include detailed analysis of allowed lost time injury and illness claims by year of injury or illness. Delays in reporting, and processing times for some complex claims, affect the reporting of claims data for any given year. Data continues to be revised after the year has concluded as additional claims are reported and decisions on complex claims are made. The revision of data after the year has concluded is called “maturing.” The numbers presented for each year include all lost time claims allowed as at March 31 of the

following year.

Since 1996, the WSIB has used the Z795 national coding standard to record injuries and diseases (that is, nature of injury or disease, part of body, event, and source of injury or disease). The National Occupational Classification (NOC) is used to classify workers’ occupations. Because coding and classification standards changed for 1996, 1996 and post-1996 data cannot be compared with pre-1996 data. This is why tables 8 to 13 show data for only seven years.

TABLE 5: LOST TIME CLAIMS BY AGE GROUP (1993 to 2002)

This table shows allowed lost time claims by age group for each year as at March 31 of the following year.

| Age Group | Year of injury or illness | | | | | | | | | | | | | | | | | | | |
|-------------------|---------------------------|-------------|----------------|-------------|----------------|-------------|----------------|-------------|----------------|-------------|---------------|-------------|----------------|-------------|----------------|-------------|---------------|-------------|---------------|-------------|
| | 1993 | % | 1994 | % | 1995 | % | 1996 | % | 1997 | % | 1998 | % | 1999 | % | 2000 | % | 2001 | % | 2002 | % |
| 15-19 years | 3,864 | 3.1% | 4,242 | 3.4% | 4,186 | 3.5% | 3,415 | 3.3% | 3,638 | 3.6% | 4,157 | 4.3% | 4,623 | 4.6% | 5,356 | 5.1% | 4,689 | 4.8% | 4,544 | 4.8% |
| 20-24 years | 13,374 | 10.7% | 13,924 | 11.1% | 13,279 | 11.2% | 11,320 | 11.0% | 11,184 | 11.0% | 10,963 | 11.3% | 11,214 | 11.1% | 11,733 | 11.3% | 10,424 | 10.6% | 9,940 | 10.4% |
| 25-29 years | 18,955 | 15.1% | 18,271 | 14.5% | 16,697 | 14.1% | 13,795 | 13.4% | 13,111 | 12.9% | 12,099 | 12.4% | 12,210 | 12.1% | 12,266 | 11.8% | 11,120 | 11.3% | 10,379 | 10.9% |
| 30-34 years | 21,423 | 17.1% | 21,806 | 17.4% | 20,462 | 17.2% | 17,297 | 16.8% | 16,442 | 16.2% | 14,884 | 15.3% | 14,110 | 14.0% | 13,886 | 13.3% | 12,655 | 12.9% | 11,724 | 12.3% |
| 35-39 years | 18,630 | 14.9% | 18,696 | 14.9% | 18,087 | 15.2% | 16,294 | 15.8% | 16,219 | 15.9% | 15,669 | 16.1% | 16,577 | 16.5% | 16,807 | 16.1% | 15,504 | 15.8% | 14,394 | 15.1% |
| 40-44 years | 15,292 | 12.2% | 15,350 | 12.2% | 14,656 | 12.3% | 13,298 | 12.9% | 13,495 | 13.3% | 13,249 | 13.6% | 13,965 | 13.9% | 14,538 | 14.0% | 14,663 | 14.9% | 14,464 | 15.1% |
| 45-49 years | 12,690 | 10.1% | 12,837 | 10.2% | 12,581 | 10.6% | 11,076 | 10.7% | 11,094 | 10.9% | 10,470 | 10.8% | 11,219 | 11.1% | 11,735 | 11.3% | 11,606 | 11.8% | 11,803 | 12.4% |
| 50-54 years | 9,252 | 7.4% | 9,460 | 7.5% | 8,891 | 7.5% | 7,955 | 7.7% | 8,224 | 8.1% | 8,020 | 8.3% | 8,722 | 8.7% | 9,228 | 8.9% | 9,266 | 9.4% | 9,135 | 9.6% |
| 55-59 years | 6,717 | 5.4% | 6,604 | 5.3% | 6,057 | 5.1% | 5,308 | 5.1% | 5,293 | 5.2% | 4,931 | 5.1% | 5,135 | 5.1% | 5,488 | 5.3% | 5,389 | 5.5% | 5,970 | 6.2% |
| 60-64 years | 3,579 | 2.9% | 3,384 | 2.7% | 3,049 | 2.6% | 2,571 | 2.5% | 2,525 | 2.5% | 2,369 | 2.4% | 2,508 | 2.5% | 2,653 | 2.5% | 2,532 | 2.6% | 2,677 | 2.8% |
| 65 years and over | 452 | 0.4% | 448 | 0.4% | 396 | 0.3% | 334 | 0.3% | 333 | 0.3% | 318 | 0.3% | 388 | 0.4% | 398 | 0.4% | 415 | 0.4% | 449 | 0.5% |
| Not available | 894 | 0.7% | 622 | 0.5% | 473 | 0.4% | 417 | 0.4% | 248 | 0.2% | 61 | 0.1% | 55 | 0.1% | 66 | 0.1% | 96 | 0.1% | 89 | 0.1% |
| Total | 125,122 | 100% | 125,644 | 100% | 118,814 | 100% | 103,080 | 100% | 101,806 | 100% | 97,190 | 100% | 100,726 | 100% | 104,154 | 100% | 98,359 | 100% | 95,568 | 100% |

TABLE 6: LOST TIME CLAIMS BY GENDER (1993 to 2002)

This table shows allowed lost time claims by gender for each year as at March 31 of the following year.

| Gender | Year of injury or illness | | | | | | | | | | | | | | | | | | | |
|---------------|---------------------------|-------------|----------------|-------------|----------------|-------------|----------------|-------------|----------------|-------------|---------------|-------------|----------------|-------------|----------------|-------------|---------------|-------------|---------------|-------------|
| | 1993 | % | 1994 | % | 1995 | % | 1996 | % | 1997 | % | 1998 | % | 1999 | % | 2000 | % | 2001 | % | 2002 | % |
| Male | 88,143 | 70.4% | 88,395 | 70.4% | 83,242 | 70.1% | 72,533 | 70.4% | 71,160 | 69.9% | 67,434 | 69.4% | 69,182 | 68.7% | 69,959 | 67.2% | 65,271 | 66.4% | 62,374 | 65.3% |
| Female | 36,918 | 29.5% | 37,098 | 29.5% | 35,454 | 29.8% | 30,413 | 29.5% | 30,571 | 30.0% | 29,707 | 30.6% | 31,523 | 31.3% | 34,176 | 32.8% | 33,039 | 33.6% | 33,180 | 34.7% |
| Not available | 61 | 0.0% | 151 | 0.1% | 118 | 0.1% | 134 | 0.1% | 75 | 0.1% | 49 | 0.1% | 21 | 0.0% | 19 | 0.0% | 49 | 0.0% | 14 | 0.0% |
| Total | 125,122 | 100% | 125,644 | 100% | 118,814 | 100% | 103,080 | 100% | 101,806 | 100% | 97,190 | 100% | 100,726 | 100% | 104,154 | 100% | 98,359 | 100% | 95,568 | 100% |

TABLE 7: LOST TIME CLAIMS BY INDUSTRY SECTOR (1993 to 2002)

The WSIB's operations are organized into 17 industry sectors (Schedule 2 is a separate industry sector). This table shows allowed lost time claims by industry sector for each year as at March 31 of the following year.

| Industry sector | Year of injury or illness | | | | | | | | | | | | | | | | | | | |
|----------------------|---------------------------|-------------|----------------|-------------|----------------|-------------|----------------|-------------|----------------|-------------|---------------|-------------|----------------|-------------|----------------|-------------|---------------|-------------|---------------|-------------|
| | 1993 | % | 1994 | % | 1995 | % | 1996 | % | 1997 | % | 1998 | % | 1999 | % | 2000 | % | 2001 | % | 2002 | % |
| Agriculture | 2,065 | 1.7% | 1,947 | 1.5% | 1,848 | 1.6% | 1,667 | 1.6% | 1,677 | 1.6% | 1,626 | 1.7% | 1,574 | 1.6% | 1,517 | 1.5% | 1,621 | 1.6% | 1,597 | 1.7% |
| Automotive | 10,397 | 8.3% | 10,150 | 8.1% | 10,039 | 8.4% | 7,817 | 7.6% | 7,582 | 7.4% | 6,338 | 6.5% | 6,753 | 6.7% | 6,862 | 6.6% | 6,186 | 6.3% | 5,859 | 6.1% |
| Chemical/process | 2,775 | 2.2% | 2,771 | 2.2% | 2,592 | 2.2% | 2,269 | 2.2% | 2,204 | 2.2% | 2,296 | 2.4% | 2,417 | 2.4% | 2,611 | 2.5% | 2,443 | 2.5% | 2,250 | 2.4% |
| Construction | 6,086 | 4.9% | 5,901 | 4.7% | 5,195 | 4.4% | 4,802 | 4.7% | 4,930 | 4.8% | 4,869 | 5.0% | 4,990 | 5.0% | 5,543 | 5.3% | 5,700 | 5.8% | 5,509 | 5.8% |
| Education | 2,533 | 2.0% | 2,256 | 1.8% | 1,886 | 1.6% | 1,557 | 1.5% | 1,352 | 1.3% | 1,127 | 1.2% | 961 | 1.0% | 828 | 0.8% | 776 | 0.8% | 781 | 0.8% |
| Electrical utilities | 567 | 0.5% | 504 | 0.4% | 455 | 0.4% | 507 | 0.5% | 436 | 0.4% | 455 | 0.5% | 390 | 0.4% | 400 | 0.4% | 523 | 0.5% | 653 | 0.7% |
| Food | 4,828 | 3.9% | 4,839 | 3.9% | 4,406 | 3.7% | 3,647 | 3.5% | 3,299 | 3.2% | 3,283 | 3.4% | 3,224 | 3.2% | 3,300 | 3.2% | 3,300 | 3.4% | 3,145 | 3.3% |
| Forestry | 954 | 0.8% | 989 | 0.8% | 1,016 | 0.9% | 804 | 0.8% | 773 | 0.8% | 835 | 0.9% | 954 | 0.9% | 996 | 1.0% | 869 | 0.9% | 913 | 1.0% |
| Health care | 9,883 | 7.9% | 9,549 | 7.6% | 9,026 | 7.6% | 7,763 | 7.5% | 7,402 | 7.3% | 7,066 | 7.3% | 7,033 | 7.0% | 7,635 | 7.3% | 7,600 | 7.7% | 8,302 | 8.7% |
| Manufacturing | 22,717 | 18.2% | 24,185 | 19.2% | 23,945 | 20.2% | 20,609 | 20.0% | 20,580 | 20.2% | 20,038 | 20.6% | 21,156 | 21.0% | 21,742 | 20.9% | 19,301 | 19.6% | 17,368 | 18.2% |
| Mining | 754 | 0.6% | 694 | 0.6% | 707 | 0.6% | 578 | 0.6% | 537 | 0.5% | 524 | 0.5% | 508 | 0.5% | 483 | 0.5% | 445 | 0.5% | 434 | 0.5% |
| Municipal | 1,939 | 1.5% | 1,678 | 1.3% | 1,499 | 1.3% | 1,156 | 1.1% | 1,156 | 1.1% | 1,088 | 1.1% | 1,033 | 1.0% | 966 | 0.9% | 900 | 0.9% | 875 | 0.9% |
| Pulp and paper | 608 | 0.5% | 557 | 0.4% | 454 | 0.4% | 410 | 0.4% | 346 | 0.3% | 330 | 0.3% | 362 | 0.4% | 408 | 0.4% | 385 | 0.4% | 305 | 0.3% |
| Services | 27,663 | 22.1% | 28,711 | 22.9% | 27,394 | 23.1% | 24,214 | 23.5% | 24,488 | 24.1% | 24,144 | 24.8% | 24,613 | 24.4% | 25,992 | 25.0% | 24,412 | 24.8% | 24,281 | 25.4% |
| Steel | 2,057 | 1.6% | 2,117 | 1.7% | 1,949 | 1.6% | 1,749 | 1.7% | 1,710 | 1.7% | 1,499 | 1.5% | 1,522 | 1.5% | 1,352 | 1.3% | 1,216 | 1.2% | 1,123 | 1.2% |
| Transportation | 8,821 | 7.0% | 9,030 | 7.2% | 8,644 | 7.3% | 8,021 | 7.8% | 8,287 | 8.1% | 7,906 | 8.1% | 8,320 | 8.3% | 8,390 | 8.1% | 7,671 | 7.8% | 7,602 | 8.0% |
| Schedule 2 | 20,475 | 16.4% | 19,766 | 15.7% | 17,759 | 14.9% | 15,510 | 15.0% | 15,047 | 14.8% | 13,766 | 14.2% | 14,916 | 14.8% | 15,129 | 14.5% | 15,011 | 15.3% | 14,571 | 15.2% |
| Total | 125,122 | 100% | 125,644 | 100% | 118,814 | 100% | 103,080 | 100% | 101,806 | 100% | 97,190 | 100% | 100,726 | 100% | 104,154 | 100% | 98,359 | 100% | 95,568 | 100% |

TABLE 8: LOST TIME CLAIMS BY NATURE OF INJURY AND DISEASE (1996 to 2002)

This table shows allowed lost time claims by diagnoses of nature of injury and disease for each year as at March 31 of the following year. Diagnoses marked with an asterisk (*) include both traumatic and repetitive motion types of injuries and diseases. NEC stands for “not elsewhere classified.”

| Diagnosis/description of nature of injury and disease | Year of injury or disease | | | | | | | | | | | | | |
|---|---------------------------|-------|--------|-------|--------|-------|--------|-------|--------|-------|--------|-------|--------|-------|
| | 1996 | % | 1997 | % | 1998 | % | 1999 | % | 2000 | % | 2001 | % | 2002 | % |
| Sprains and strains | 43,925 | 42.6% | 41,694 | 41.0% | 39,100 | 40.2% | 40,564 | 40.3% | 41,550 | 39.9% | 38,911 | 39.6% | 37,475 | 39.2% |
| Bruises, contusions | 12,530 | 12.2% | 12,543 | 12.3% | 11,327 | 11.7% | 11,762 | 11.7% | 12,143 | 11.7% | 10,838 | 11.0% | 10,730 | 11.2% |
| Cuts, lacerations, punctures | 8,805 | 8.5% | 8,711 | 8.6% | 8,847 | 9.1% | 9,297 | 9.2% | 9,485 | 9.1% | 8,594 | 8.7% | 8,196 | 8.6% |
| Fractures | 6,535 | 6.3% | 6,395 | 6.3% | 6,342 | 6.5% | 6,795 | 6.7% | 6,818 | 6.5% | 6,567 | 6.7% | 6,487 | 6.8% |
| Traumatic injuries, disorders, complications, unspecified, NEC | 5,726 | 5.6% | 5,951 | 5.8% | 5,803 | 6.0% | 5,843 | 5.8% | 5,574 | 5.4% | 5,397 | 5.5% | 4,985 | 5.2% |
| Back pain, hurt back | 2,739 | 2.7% | 2,980 | 2.9% | 2,609 | 2.7% | 2,592 | 2.6% | 2,843 | 2.7% | 3,163 | 3.2% | 3,105 | 3.2% |
| Soreness, pain, hurt, except the back | 1,721 | 1.7% | 1,968 | 1.9% | 1,627 | 1.7% | 1,851 | 1.8% | 2,318 | 2.2% | 2,916 | 3.0% | 2,820 | 3.0% |
| Multiple traumatic injuries | 3,018 | 2.9% | 3,773 | 3.7% | 3,267 | 3.4% | 3,057 | 3.0% | 3,182 | 3.1% | 2,896 | 2.9% | 2,751 | 2.9% |
| Abrasions, scratches and other superficial injuries | 2,860 | 2.8% | 2,725 | 2.7% | 2,925 | 3.0% | 2,721 | 2.7% | 2,773 | 2.7% | 2,415 | 2.5% | 2,255 | 2.4% |
| Tendonitis * | 2,550 | 2.5% | 2,383 | 2.3% | 2,134 | 2.2% | 2,375 | 2.4% | 2,558 | 2.5% | 2,420 | 2.5% | 2,249 | 2.4% |
| Burn or Scald (heat) | 1,552 | 1.5% | 1,518 | 1.5% | 1,639 | 1.7% | 1,700 | 1.7% | 1,766 | 1.7% | 1,650 | 1.7% | 1,578 | 1.7% |
| Dislocations | 991 | 1.0% | 988 | 1.0% | 907 | 0.9% | 1,104 | 1.1% | 1,049 | 1.0% | 968 | 1.0% | 981 | 1.0% |
| Hernia | 984 | 1.0% | 1,017 | 1.0% | 946 | 1.0% | 946 | 0.9% | 976 | 0.9% | 882 | 0.9% | 885 | 0.9% |
| Carpal Tunnel Syndrome * | 800 | 0.8% | 775 | 0.8% | 683 | 0.7% | 819 | 0.8% | 879 | 0.8% | 825 | 0.8% | 867 | 0.9% |
| Epicondylitis * | 449 | 0.4% | 794 | 0.8% | 708 | 0.7% | 798 | 0.8% | 840 | 0.8% | 773 | 0.8% | 750 | 0.8% |
| Musculoskeletal system and connective tissue, diseases and disorders unspecified, NEC | 622 | 0.6% | 590 | 0.6% | 608 | 0.6% | 653 | 0.6% | 683 | 0.7% | 681 | 0.7% | 609 | 0.6% |
| Concussions | 390 | 0.4% | 419 | 0.4% | 466 | 0.5% | 498 | 0.5% | 563 | 0.5% | 609 | 0.6% | 581 | 0.6% |
| Signs and symptoms including contacts / carriers of disease | 368 | 0.4% | 425 | 0.4% | 473 | 0.5% | 511 | 0.5% | 583 | 0.6% | 662 | 0.7% | 578 | 0.6% |
| Intracranial injuries excluding concussions | 400 | 0.4% | 306 | 0.3% | 179 | 0.2% | 267 | 0.3% | 461 | 0.4% | 418 | 0.4% | 573 | 0.6% |
| Sciatica | 309 | 0.3% | 359 | 0.4% | 366 | 0.4% | 379 | 0.4% | 433 | 0.4% | 489 | 0.5% | 563 | 0.6% |
| Intervertebral herniated, slipped disc including disc syndrome | 405 | 0.4% | 389 | 0.4% | 482 | 0.5% | 489 | 0.5% | 532 | 0.5% | 538 | 0.5% | 547 | 0.6% |
| Infectious and parasitic diseases | 188 | 0.2% | 121 | 0.1% | 161 | 0.2% | 155 | 0.2% | 149 | 0.1% | 149 | 0.2% | 544 | 0.6% |
| Amputations or enucleations | 758 | 0.7% | 605 | 0.6% | 723 | 0.7% | 808 | 0.8% | 716 | 0.7% | 692 | 0.7% | 522 | 0.5% |
| Poisonings, systemic | 354 | 0.3% | 393 | 0.4% | 391 | 0.4% | 411 | 0.4% | 513 | 0.5% | 448 | 0.5% | 482 | 0.5% |
| Avulsions | 255 | 0.2% | 272 | 0.3% | 369 | 0.4% | 339 | 0.3% | 405 | 0.4% | 394 | 0.4% | 440 | 0.5% |
| Crushing injuries | 335 | 0.3% | 415 | 0.4% | 313 | 0.3% | 416 | 0.4% | 461 | 0.4% | 396 | 0.4% | 426 | 0.4% |

Continued on next page

| | | | | | | | | | | | | | | |
|---|----------------|-------------|----------------|-------------|---------------|-------------|----------------|-------------|----------------|-------------|---------------|-------------|---------------|-------------|
| Skin and subcutaneous tissue disorders, including Dermatitis | 317 | 0.3% | 316 | 0.3% | 338 | 0.3% | 339 | 0.3% | 395 | 0.4% | 376 | 0.4% | 399 | 0.4% |
| Mental disorders or syndromes | 231 | 0.2% | 204 | 0.2% | 210 | 0.2% | 265 | 0.3% | 266 | 0.3% | 289 | 0.3% | 333 | 0.3% |
| Bursitis * | 442 | 0.4% | 383 | 0.4% | 347 | 0.4% | 333 | 0.3% | 355 | 0.3% | 307 | 0.3% | 330 | 0.3% |
| Burns (chemical) | 356 | 0.3% | 337 | 0.3% | 337 | 0.3% | 336 | 0.3% | 361 | 0.3% | 311 | 0.3% | 328 | 0.3% |
| Rotator cuff tear or syndrome * | 184 | 0.2% | 181 | 0.2% | 266 | 0.3% | 249 | 0.2% | 322 | 0.3% | 320 | 0.3% | 318 | 0.3% |
| Tenosynovitis * | 162 | 0.2% | 294 | 0.3% | 273 | 0.3% | 265 | 0.3% | 313 | 0.3% | 278 | 0.3% | 268 | 0.3% |
| Conjunctivitis | 251 | 0.2% | 222 | 0.2% | 214 | 0.2% | 199 | 0.2% | 234 | 0.2% | 236 | 0.2% | 189 | 0.2% |
| Welder's flash | 270 | 0.3% | 282 | 0.3% | 370 | 0.4% | 314 | 0.3% | 328 | 0.3% | 197 | 0.2% | 176 | 0.2% |
| Respiratory system diseases | 111 | 0.1% | 85 | 0.1% | 87 | 0.1% | 110 | 0.1% | 129 | 0.1% | 202 | 0.2% | 163 | 0.2% |
| Facet syndrome | 104 | 0.1% | 111 | 0.1% | 156 | 0.2% | 131 | 0.1% | 162 | 0.2% | 97 | 0.1% | 125 | 0.1% |
| Disorders of the eye, adnexa, vision, unspecified, NEC | 102 | 0.1% | 90 | 0.1% | 89 | 0.1% | 87 | 0.1% | 131 | 0.1% | 118 | 0.1% | 112 | 0.1% |
| Heat and light effects including heat stroke, fatigue and syncope | 16 | 0.0% | 16 | 0.0% | 13 | 0.0% | 23 | 0.0% | 5 | 0.0% | 84 | 0.1% | 98 | 0.1% |
| Electrocutions, electric shock | 65 | 0.1% | 64 | 0.1% | 77 | 0.1% | 95 | 0.1% | 76 | 0.1% | 86 | 0.1% | 91 | 0.1% |
| Burns multiple, unspecified, NEC | 144 | 0.1% | 129 | 0.1% | 175 | 0.2% | 135 | 0.1% | 127 | 0.1% | 100 | 0.1% | 83 | 0.1% |
| Burns (electrical) | 97 | 0.1% | 83 | 0.1% | 118 | 0.1% | 115 | 0.1% | 99 | 0.1% | 101 | 0.1% | 74 | 0.1% |
| Disorders of ear including deafness | 71 | 0.1% | 46 | 0.0% | 49 | 0.1% | 61 | 0.1% | 53 | 0.1% | 59 | 0.1% | 49 | 0.1% |
| Ganglion * | 51 | 0.0% | 71 | 0.1% | 60 | 0.1% | 58 | 0.1% | 55 | 0.1% | 71 | 0.1% | 42 | 0.0% |
| Circulatory system diseases | 50 | 0.0% | 22 | 0.0% | 30 | 0.0% | 40 | 0.0% | 33 | 0.0% | 41 | 0.0% | 41 | 0.0% |
| Capsulitis * | 20 | 0.0% | 13 | 0.0% | 15 | 0.0% | 18 | 0.0% | 21 | 0.0% | 28 | 0.0% | 38 | 0.0% |
| Nervous system and sense organs diseases | 16 | 0.0% | 16 | 0.0% | 26 | 0.0% | 22 | 0.0% | 35 | 0.0% | 28 | 0.0% | 38 | 0.0% |
| Myositis * | 14 | 0.0% | 38 | 0.0% | 42 | 0.0% | 32 | 0.0% | 34 | 0.0% | 37 | 0.0% | 28 | 0.0% |
| Mesothelioma | 12 | 0.0% | 9 | 0.0% | 23 | 0.0% | 24 | 0.0% | 19 | 0.0% | 22 | 0.0% | 28 | 0.0% |
| Synovitis * | 10 | 0.0% | 33 | 0.0% | 44 | 0.0% | 35 | 0.0% | 24 | 0.0% | 33 | 0.0% | 27 | 0.0% |
| Neoplasms, tumors and cancer, excluding Mesothelioma | 8 | 0.0% | 7 | 0.0% | 14 | 0.0% | 9 | 0.0% | 12 | 0.0% | 7 | 0.0% | 23 | 0.0% |
| Diseases and disorders multiple, unspecified, NEC | 87 | 0.1% | 67 | 0.1% | 50 | 0.1% | 19 | 0.0% | 20 | 0.0% | 42 | 0.0% | 21 | 0.0% |
| Genitourinary system diseases and disorders | 5 | 0.0% | 4 | 0.0% | 6 | 0.0% | 12 | 0.0% | 8 | 0.0% | 15 | 0.0% | 14 | 0.0% |
| Air pressure effects including other environmental conditions | 10 | 0.0% | 8 | 0.0% | 3 | 0.0% | 6 | 0.0% | 8 | 0.0% | 9 | 0.0% | 10 | 0.0% |
| Freezing effects including frostbite | 19 | 0.0% | 9 | 0.0% | 8 | 0.0% | 31 | 0.0% | 16 | 0.0% | 5 | 0.0% | 10 | 0.0% |
| Non-personal damage | 9 | 0.0% | 7 | 0.0% | 9 | 0.0% | 6 | 0.0% | 7 | 0.0% | 7 | 0.0% | 6 | 0.0% |
| Digestive system diseases | 6 | 0.0% | 3 | 0.0% | 3 | 0.0% | 7 | 0.0% | 8 | 0.0% | 5 | 0.0% | 3 | 0.0% |
| Diseases of blood and blood-forming organs | 1 | 0.0% | 0 | 0.0% | 0 | 0.0% | 2 | 0.0% | 7 | 0.0% | 0 | 0.0% | 3 | 0.0% |
| Unknown | 270 | 0.3% | 147 | 0.1% | 343 | 0.4% | 198 | 0.2% | 238 | 0.2% | 157 | 0.2% | 121 | 0.1% |
| Total | 103,080 | 100% | 101,806 | 100% | 97,190 | 100% | 100,726 | 100% | 104,154 | 100% | 98,359 | 100% | 95,568 | 100% |

TABLE 9: LOST TIME CLAIMS BY PART OF BODY AFFECTED (1996 to 2002)

This table shows allowed lost time claims by part of body affected for each year as at March 31 of the following year. NEC stands for “not elsewhere classified.”

| Part of body affected | Year of injury or illness | | | | | | | | | | | | | |
|---|---------------------------|--------------|----------------|--------------|---------------|--------------|----------------|--------------|----------------|--------------|---------------|--------------|---------------|--------------|
| | 1996 | % | 1997 | % | 1998 | % | 1999 | % | 2000 | % | 2001 | % | 2002 | % |
| Back (including spine, spinal cord, neck) | | | | | | | | | | | | | | |
| Lower (lumbar, sacral, coccygeal regions) | 20,242 | 19.6% | 18,977 | 18.6% | 18,788 | 19.3% | 19,767 | 19.6% | 19,820 | 19.0% | 19,394 | 19.7% | 18,980 | 19.9% |
| Upper (cervical, thoracic regions) | 4,279 | 4.2% | 4,184 | 4.1% | 3,878 | 4.0% | 4,382 | 4.4% | 4,315 | 4.1% | 4,149 | 4.2% | 4,282 | 4.5% |
| Multiple back regions | 1,107 | 1.1% | 1,418 | 1.4% | 1,468 | 1.5% | 1,535 | 1.5% | 1,678 | 1.6% | 1,573 | 1.6% | 1,516 | 1.6% |
| Back, unspecified, NEC | 6,266 | 6.1% | 5,976 | 5.9% | 5,040 | 5.2% | 4,587 | 4.6% | 4,703 | 4.5% | 4,182 | 4.3% | 3,486 | 3.6% |
| Subtotal | 31,894 | 30.9% | 30,555 | 30.0% | 29,174 | 30.0% | 30,271 | 30.1% | 30,516 | 29.3% | 29,298 | 29.8% | 28,264 | 29.6% |
| Upper extremities | | | | | | | | | | | | | | |
| Finger(s), fingernail(s) | 10,550 | 10.2% | 10,510 | 10.3% | 10,270 | 10.6% | 10,585 | 10.5% | 10,799 | 10.4% | 9,706 | 9.9% | 9,340 | 9.8% |
| Arm(s) | 5,030 | 4.9% | 4,926 | 4.8% | 4,482 | 4.6% | 4,753 | 4.7% | 5,013 | 4.8% | 4,822 | 4.9% | 4,556 | 4.8% |
| Hand(s), except finger(s) | 4,405 | 4.3% | 4,638 | 4.6% | 4,430 | 4.6% | 4,831 | 4.8% | 5,063 | 4.9% | 4,661 | 4.7% | 4,545 | 4.8% |
| Wrist(s) | 3,947 | 3.8% | 3,812 | 3.7% | 3,714 | 3.8% | 4,184 | 4.2% | 4,286 | 4.1% | 4,046 | 4.1% | 4,063 | 4.3% |
| Upper extremities, unspecified, NEC | 861 | 0.8% | 793 | 0.8% | 766 | 0.8% | 746 | 0.7% | 809 | 0.8% | 722 | 0.7% | 714 | 0.7% |
| Subtotal | 24,793 | 24.1% | 24,679 | 24.2% | 23,662 | 24.3% | 25,099 | 24.9% | 25,970 | 24.9% | 23,957 | 24.4% | 23,218 | 24.3% |
| Lower extremities | | | | | | | | | | | | | | |
| Leg(s) | 8,299 | 8.1% | 8,573 | 8.4% | 8,050 | 8.3% | 8,527 | 8.5% | 8,619 | 8.3% | 8,510 | 8.7% | 8,110 | 8.5% |
| Ankle(s) | 5,269 | 5.1% | 5,347 | 5.3% | 5,050 | 5.2% | 5,367 | 5.3% | 5,448 | 5.2% | 5,206 | 5.3% | 5,108 | 5.3% |
| Foot(feet), except toe(s) | 3,597 | 3.5% | 3,675 | 3.6% | 3,496 | 3.6% | 3,568 | 3.5% | 3,676 | 3.5% | 3,354 | 3.4% | 3,163 | 3.3% |
| Toe(s), toenail(s) | 975 | 0.9% | 856 | 0.8% | 798 | 0.8% | 747 | 0.7% | 671 | 0.6% | 618 | 0.6% | 634 | 0.7% |
| Multiple lower extremities locations | 484 | 0.5% | 534 | 0.5% | 481 | 0.5% | 491 | 0.5% | 547 | 0.5% | 491 | 0.5% | 465 | 0.5% |
| Lower extremities, unspecified, NEC | 19 | 0.0% | 58 | 0.1% | 7 | 0.0% | 19 | 0.0% | 19 | 0.0% | 10 | 0.0% | 27 | 0.0% |
| Subtotal | 18,643 | 18.1% | 19,043 | 18.7% | 17,882 | 18.4% | 18,719 | 18.6% | 18,980 | 18.2% | 18,189 | 18.5% | 17,507 | 18.3% |
| Trunk (excluding back) | | | | | | | | | | | | | | |
| Shoulder | 5,812 | 5.6% | 5,668 | 5.6% | 5,464 | 5.6% | 5,828 | 5.8% | 6,470 | 6.2% | 5,837 | 5.9% | 5,786 | 6.1% |
| Pelvic region | 2,366 | 2.3% | 2,733 | 2.7% | 2,449 | 2.5% | 2,481 | 2.5% | 2,550 | 2.4% | 2,283 | 2.3% | 2,187 | 2.3% |
| Chest, including ribs, internal organs | 2,062 | 2.0% | 2,021 | 2.0% | 1,835 | 1.9% | 1,995 | 2.0% | 2,085 | 2.0% | 1,958 | 2.0% | 1,945 | 2.0% |
| Multiple trunk locations | 870 | 0.8% | 1,068 | 1.0% | 987 | 1.0% | 996 | 1.0% | 1,069 | 1.0% | 974 | 1.0% | 931 | 1.0% |
| Abdomen | 537 | 0.5% | 549 | 0.5% | 471 | 0.5% | 609 | 0.6% | 612 | 0.6% | 533 | 0.5% | 844 | 0.9% |
| Trunk, unspecified, NEC | 65 | 0.1% | 71 | 0.1% | 78 | 0.1% | 54 | 0.1% | 52 | 0.0% | 30 | 0.0% | 38 | 0.0% |
| Subtotal | 11,712 | 11.4% | 12,110 | 11.9% | 11,284 | 11.6% | 11,963 | 11.9% | 12,838 | 12.3% | 11,615 | 11.8% | 11,731 | 12.3% |
| Head | | | | | | | | | | | | | | |
| Eye(s) | 4,284 | 4.2% | 4,219 | 4.1% | 4,127 | 4.2% | 3,815 | 3.8% | 4,006 | 3.8% | 3,525 | 3.6% | 3,165 | 3.3% |
| Cranial region, including skull | 1,215 | 1.2% | 1,305 | 1.3% | 1,317 | 1.4% | 1,714 | 1.7% | 1,884 | 1.8% | 1,865 | 1.9% | 1,847 | 1.9% |
| Face | 1,120 | 1.1% | 1,092 | 1.1% | 1,107 | 1.1% | 1,174 | 1.2% | 1,263 | 1.2% | 1,168 | 1.2% | 1,115 | 1.2% |
| Ear(s) | 119 | 0.1% | 103 | 0.1% | 110 | 0.1% | 117 | 0.1% | 113 | 0.1% | 97 | 0.1% | 113 | 0.1% |
| Multiple head locations | 58 | 0.1% | 41 | 0.0% | 51 | 0.1% | 38 | 0.0% | 46 | 0.0% | 42 | 0.0% | 53 | 0.1% |
| Head, unspecified, NEC | 523 | 0.5% | 527 | 0.5% | 501 | 0.5% | 237 | 0.2% | 251 | 0.2% | 262 | 0.3% | 245 | 0.3% |
| Subtotal | 7,319 | 7.1% | 7,287 | 7.2% | 7,213 | 7.4% | 7,095 | 7.0% | 7,563 | 7.3% | 6,959 | 7.1% | 6,538 | 6.8% |
| Multiple body parts | 7,550 | 7.3% | 7,032 | 6.9% | 6,752 | 6.9% | 6,405 | 6.4% | 7,033 | 6.8% | 6,940 | 7.1% | 6,873 | 7.2% |
| Body systems | 694 | 0.7% | 700 | 0.7% | 722 | 0.7% | 821 | 0.8% | 929 | 0.9% | 1,116 | 1.1% | 1,193 | 1.2% |
| Other body parts including unclassified, NEC | 475 | 0.5% | 400 | 0.4% | 501 | 0.5% | 353 | 0.4% | 325 | 0.3% | 285 | 0.3% | 244 | 0.3% |
| Total | 103,080 | 100% | 101,806 | 100% | 97,190 | 100% | 100,726 | 100% | 104,154 | 100% | 98,359 | 100% | 95,568 | 100% |

TABLE 10: LOST TIME CLAIMS BY EVENT (1996 to 2002)

This table shows allowed lost time claims by event (the way in which the injury or illness occurred) for each year as at March 31 of the following year. NEC stands for “not elsewhere classified.”

| Event | Year of injury or illness | | | | | | | | | | | | | |
|--|---------------------------|--------------|----------------|--------------|---------------|--------------|----------------|--------------|----------------|--------------|---------------|--------------|---------------|--------------|
| | 1996 | % | 1997 | % | 1998 | % | 1999 | % | 2000 | % | 2001 | % | 2002 | % |
| Bodily reaction and exertion | | | | | | | | | | | | | | |
| Overexertion | 30,089 | 29.2% | 27,764 | 27.3% | 24,567 | 25.3% | 24,813 | 24.6% | 25,657 | 24.6% | 23,828 | 24.2% | 22,373 | 23.4% |
| Bodily reaction | 12,043 | 11.7% | 12,530 | 12.3% | 11,571 | 11.9% | 12,127 | 12.0% | 12,710 | 12.2% | 12,633 | 12.8% | 11,315 | 11.8% |
| Repetitive motion | 4,134 | 4.0% | 3,869 | 3.8% | 3,663 | 3.8% | 3,895 | 3.9% | 4,447 | 4.3% | 4,229 | 4.3% | 3,996 | 4.2% |
| Static posture and sustained viewing | 125 | 0.1% | 92 | 0.1% | 80 | 0.1% | 99 | 0.1% | 80 | 0.1% | 73 | 0.1% | 82 | 0.1% |
| Bodily reaction and exertion (combined), including unspecified, NEC | 1,370 | 1.3% | 2,465 | 2.4% | 4,180 | 4.3% | 4,526 | 4.5% | 4,354 | 4.2% | 4,246 | 4.3% | 5,334 | 5.6% |
| Subtotal | 47,761 | 46.3% | 46,720 | 45.9% | 44,061 | 45.3% | 45,460 | 45.1% | 47,248 | 45.4% | 45,009 | 45.8% | 43,100 | 45.1% |
| Contact with objects and equipment | | | | | | | | | | | | | | |
| Struck by | 15,554 | 15.1% | 15,388 | 15.1% | 15,312 | 15.8% | 15,984 | 15.9% | 16,366 | 15.7% | 15,216 | 15.5% | 14,349 | 15.0% |
| Struck against | 5,941 | 5.8% | 5,768 | 5.7% | 5,370 | 5.5% | 5,558 | 5.5% | 5,722 | 5.5% | 5,242 | 5.3% | 4,825 | 5.0% |
| Caught in or compressed by equipment or objects or collapsing material | 5,750 | 5.6% | 5,594 | 5.5% | 5,525 | 5.7% | 5,638 | 5.6% | 5,693 | 5.5% | 5,129 | 5.2% | 4,747 | 5.0% |
| Rubbed or abraded by friction, pressure or jarred by vibration | 894 | 0.9% | 833 | 0.8% | 1,057 | 1.1% | 806 | 0.8% | 901 | 0.9% | 794 | 0.8% | 970 | 1.0% |
| Contact with objects and equipment, unspecified, NEC | 562 | 0.5% | 911 | 0.9% | 511 | 0.5% | 589 | 0.6% | 620 | 0.6% | 487 | 0.5% | 514 | 0.5% |
| Subtotal | 28,701 | 27.8% | 28,494 | 28.0% | 27,775 | 28.6% | 28,575 | 28.4% | 29,302 | 28.1% | 26,868 | 27.3% | 25,405 | 26.6% |
| Falls | | | | | | | | | | | | | | |
| Falls on same level | 10,872 | 10.5% | 11,365 | 11.2% | 9,939 | 10.2% | 11,140 | 11.1% | 11,025 | 10.6% | 10,945 | 11.1% | 10,864 | 11.4% |
| Falls/jump to lower level | 6,060 | 5.9% | 5,684 | 5.6% | 5,663 | 5.8% | 5,787 | 5.7% | 6,002 | 5.8% | 5,644 | 5.7% | 5,678 | 5.9% |
| Falls, unspecified, NEC | 66 | 0.1% | 118 | 0.1% | 128 | 0.1% | 86 | 0.1% | 119 | 0.1% | 131 | 0.1% | 105 | 0.1% |
| Subtotal | 16,998 | 16.5% | 17,167 | 16.9% | 15,730 | 16.2% | 17,013 | 16.9% | 17,146 | 16.5% | 16,720 | 17.0% | 16,647 | 17.4% |
| Exposure to harmful substances or environments | | | | | | | | | | | | | | |
| Exposure to caustic, noxious, or allergenic substances | 1,546 | 1.5% | 1,627 | 1.6% | 1,784 | 1.8% | 1,807 | 1.8% | 2,097 | 2.0% | 1,945 | 2.0% | 2,504 | 2.6% |
| Contact with temperature extremes | 1,828 | 1.8% | 1,720 | 1.7% | 1,726 | 1.8% | 1,833 | 1.8% | 1,822 | 1.7% | 1,888 | 1.9% | 1,676 | 1.8% |
| Exposure to radiation | 368 | 0.4% | 426 | 0.4% | 481 | 0.5% | 406 | 0.4% | 428 | 0.4% | 299 | 0.3% | 259 | 0.3% |
| Contact with electric current | 194 | 0.2% | 151 | 0.1% | 182 | 0.2% | 180 | 0.2% | 179 | 0.2% | 161 | 0.2% | 157 | 0.2% |
| Exposure to noise | 49 | 0.0% | 35 | 0.0% | 42 | 0.0% | 49 | 0.0% | 34 | 0.0% | 38 | 0.0% | 36 | 0.0% |
| Exposure to air pressure changes | 21 | 0.0% | 28 | 0.0% | 7 | 0.0% | 17 | 0.0% | 21 | 0.0% | 24 | 0.0% | 16 | 0.0% |
| Exposure to harmful substances or environments, unspecified, NEC | 125 | 0.1% | 100 | 0.1% | 115 | 0.1% | 140 | 0.1% | 151 | 0.1% | 160 | 0.2% | 177 | 0.2% |
| Subtotal | 4,131 | 4.0% | 4,087 | 4.0% | 4,337 | 4.5% | 4,432 | 4.4% | 4,732 | 4.5% | 4,515 | 4.6% | 4,825 | 5.0% |
| Transportation accidents | | | | | | | | | | | | | | |
| Highway accidents | 1,607 | 1.6% | 1,458 | 1.4% | 1,434 | 1.5% | 1,569 | 1.6% | 1,664 | 1.6% | 1,539 | 1.6% | 1,698 | 1.8% |
| Non-highway accidents | 1,114 | 1.1% | 1,294 | 1.3% | 1,259 | 1.3% | 1,267 | 1.3% | 1,342 | 1.3% | 1,343 | 1.4% | 1,376 | 1.4% |
| Transportation accidents, unspecified, NEC | 38 | 0.0% | 46 | 0.0% | 22 | 0.0% | 34 | 0.0% | 39 | 0.0% | 22 | 0.0% | 6 | 0.0% |
| Subtotal | 2,759 | 2.7% | 2,798 | 2.7% | 2,715 | 2.8% | 2,870 | 2.8% | 3,045 | 2.9% | 2,904 | 3.0% | 3,080 | 3.2% |
| Assaults and violent acts | 1,537 | 1.5% | 1,594 | 1.6% | 1,530 | 1.6% | 1,476 | 1.5% | 1,523 | 1.5% | 1,553 | 1.6% | 1,747 | 1.8% |
| Fires and explosions | | | | | | | | | | | | | | |
| Fire - unintended or uncontrolled | 89 | 0.1% | 122 | 0.1% | 135 | 0.1% | 133 | 0.1% | 191 | 0.2% | 235 | 0.2% | 237 | 0.2% |
| Explosion | 140 | 0.1% | 124 | 0.1% | 124 | 0.1% | 123 | 0.1% | 121 | 0.1% | 129 | 0.1% | 129 | 0.1% |
| Fire or explosion, unspecified, NEC | 4 | 0.0% | 0 | 0.0% | 3 | 0.0% | 5 | 0.0% | 6 | 0.0% | 8 | 0.0% | 11 | 0.0% |
| Subtotal | 233 | 0.2% | 246 | 0.2% | 262 | 0.3% | 261 | 0.3% | 318 | 0.3% | 372 | 0.4% | 377 | 0.4% |
| Other events or exposures unknown / unidentified | 960 | 0.9% | 700 | 0.7% | 780 | 0.8% | 639 | 0.6% | 840 | 0.8% | 418 | 0.4% | 387 | 0.4% |
| Total | 103,080 | 100% | 101,806 | 100% | 97,190 | 100% | 100,726 | 100% | 104,154 | 100% | 98,359 | 100% | 95,568 | 100% |

TABLE 11: LOST TIME CLAIMS BY SOURCE OF INJURY OR DISEASE (1996 to 2002)

This table shows allowed lost time claims by source of injury or disease (the object, substance, exposure or bodily motion that brought about the injury or disease) for each year as at March 31 of the following year. NEC stands for “not elsewhere classified.”

| Source of injury or disease | Year of injury or disease | | | | | | | | | | | | | |
|--|---------------------------|--------------|---------------|--------------|---------------|--------------|---------------|--------------|---------------|--------------|---------------|--------------|--------------|--------------|
| | 1996 | % | 1997 | % | 1998 | % | 1999 | % | 2000 | % | 2001 | % | 2002 | % |
| Persons (bodily motion or condition) | 22,444 | 21.8% | 23,067 | 22.7% | 22,837 | 23.5% | 23,884 | 23.7% | 25,503 | 24.5% | 24,572 | 25.0% | 21,658 | 22.7% |
| Structures (including walkways, floors and buildings) | 17,847 | 17.3% | 16,781 | 16.5% | 14,523 | 14.9% | 14,896 | 14.8% | 17,101 | 16.4% | 17,401 | 17.7% | 17,504 | 18.3% |
| Containers, boxes, barrels, packages (pressurized, non pressurized) | 14,686 | 14.2% | 14,009 | 13.8% | 12,965 | 13.3% | 13,421 | 13.3% | 13,368 | 12.8% | 12,644 | 12.9% | 13,043 | 13.6% |
| Parts and materials | | | | | | | | | | | | | | |
| Building materials | 4,530 | 4.4% | 4,362 | 4.3% | 4,297 | 4.4% | 4,427 | 4.4% | 4,514 | 4.3% | 4,148 | 4.2% | 4,029 | 4.2% |
| Vehicle and mobile equipment parts | 2,007 | 1.9% | 1,983 | 1.9% | 1,697 | 1.7% | 1,686 | 1.7% | 1,756 | 1.7% | 1,549 | 1.6% | 1,560 | 1.6% |
| Machine tool and electric parts | 1,489 | 1.4% | 1,527 | 1.5% | 1,273 | 1.3% | 1,409 | 1.4% | 1,533 | 1.5% | 1,459 | 1.5% | 1,411 | 1.5% |
| Fasteners, connectors, ropes, ties | 986 | 1.0% | 1,040 | 1.0% | 1,017 | 1.0% | 1,033 | 1.0% | 1,107 | 1.1% | 1,009 | 1.0% | 1,048 | 1.1% |
| Metal materials | 1,697 | 1.6% | 1,503 | 1.5% | 1,410 | 1.5% | 1,212 | 1.2% | 1,118 | 1.1% | 800 | 0.8% | 746 | 0.8% |
| Hoisting accessories | 83 | 0.1% | 107 | 0.1% | 95 | 0.1% | 115 | 0.1% | 126 | 0.1% | 91 | 0.1% | 105 | 0.1% |
| Tars, sealants, caulking, insulating materials | 96 | 0.1% | 69 | 0.1% | 84 | 0.1% | 83 | 0.1% | 76 | 0.1% | 88 | 0.1% | 80 | 0.1% |
| Tarps and sheeting (non-metal) | 87 | 0.1% | 84 | 0.1% | 51 | 0.1% | 67 | 0.1% | 50 | 0.0% | 54 | 0.1% | 64 | 0.1% |
| Parts and materials unspecified, NEC | 659 | 0.6% | 569 | 0.6% | 566 | 0.6% | 785 | 0.8% | 977 | 0.9% | 931 | 0.9% | 870 | 0.9% |
| Subtotal | 11,634 | 11.3% | 11,244 | 11.0% | 10,490 | 10.8% | 10,817 | 10.7% | 11,257 | 10.8% | 10,129 | 10.3% | 9,913 | 10.4% |
| Machinery | | | | | | | | | | | | | | |
| Metal woodworking and plastic, rubber concrete and other processing | 2,313 | 2.2% | 2,148 | 2.1% | 2,364 | 2.4% | 2,301 | 2.3% | 2,204 | 2.1% | 1,766 | 1.8% | 1,664 | 1.7% |
| Special process machinery (including food slicers, paper, printing, wrapping, sewing, pumps) | 1,347 | 1.3% | 1,271 | 1.2% | 1,246 | 1.3% | 1,317 | 1.3% | 1,324 | 1.3% | 1,186 | 1.2% | 1,159 | 1.2% |
| Miscellaneous machinery (including audio, video, televisions, telephones, snowblowers) | 1,252 | 1.2% | 1,113 | 1.1% | 951 | 1.0% | 998 | 1.0% | 909 | 0.9% | 1,016 | 1.0% | 947 | 1.0% |
| Heating, cooling and cleaning machinery | 962 | 0.9% | 858 | 0.8% | 860 | 0.9% | 854 | 0.8% | 854 | 0.8% | 853 | 0.9% | 864 | 0.9% |
| Cranes, derricks, elevators, jacks and overhead hoists (excludes hoisting accessories) | 465 | 0.5% | 505 | 0.5% | 407 | 0.4% | 425 | 0.4% | 466 | 0.4% | 466 | 0.5% | 459 | 0.5% |
| Conveyors | 455 | 0.4% | 396 | 0.4% | 431 | 0.4% | 472 | 0.5% | 475 | 0.5% | 445 | 0.5% | 457 | 0.5% |
| Agricultural, construction, logging and mining | 503 | 0.5% | 460 | 0.5% | 425 | 0.4% | 435 | 0.4% | 387 | 0.4% | 422 | 0.4% | 424 | 0.4% |
| Office and business machines | 183 | 0.2% | 167 | 0.2% | 190 | 0.2% | 173 | 0.2% | 183 | 0.2% | 168 | 0.2% | 194 | 0.2% |
| Machinery, unspecified, NEC | 458 | 0.4% | 619 | 0.6% | 637 | 0.7% | 696 | 0.7% | 762 | 0.7% | 562 | 0.6% | 547 | 0.6% |
| Subtotal | 7,938 | 7.7% | 7,537 | 7.4% | 7,511 | 7.7% | 7,671 | 7.6% | 7,564 | 7.3% | 6,884 | 7.0% | 6,715 | 7.0% |

| | | | | | | | | | | | | | | |
|---|----------------|-------------|----------------|-------------|---------------|-------------|----------------|-------------|----------------|-------------|---------------|-------------|---------------|-------------|
| Other tools, instruments, equipment | | | | | | | | | | | | | | |
| Hand tools, non-powered | 3,798 | 3.7% | 3,722 | 3.7% | 3,674 | 3.8% | 3,915 | 3.9% | 4,033 | 3.9% | 3,693 | 3.8% | 3,541 | 3.7% |
| Hand tools, powered | 1,174 | 1.1% | 1,057 | 1.0% | 930 | 1.0% | 945 | 0.9% | 993 | 1.0% | 895 | 0.9% | 947 | 1.0% |
| Hand tools, power not determined | 568 | 0.6% | 409 | 0.4% | 301 | 0.3% | 232 | 0.2% | 208 | 0.2% | 223 | 0.2% | 284 | 0.3% |
| Ladders | 264 | 0.3% | 276 | 0.3% | 233 | 0.2% | 236 | 0.2% | 207 | 0.2% | 239 | 0.2% | 252 | 0.3% |
| Recreation and athletic equipment | 227 | 0.2% | 221 | 0.2% | 231 | 0.2% | 206 | 0.2% | 238 | 0.2% | 221 | 0.2% | 252 | 0.3% |
| Medical and surgical instruments | 45 | 0.0% | 47 | 0.0% | 69 | 0.1% | 81 | 0.1% | 113 | 0.1% | 112 | 0.1% | 126 | 0.1% |
| Protective equipment, except clothing | 28 | 0.0% | 16 | 0.0% | 21 | 0.0% | 29 | 0.0% | 26 | 0.0% | 23 | 0.0% | 40 | 0.0% |
| Photographic equipment | 28 | 0.0% | 25 | 0.0% | 34 | 0.0% | 25 | 0.0% | 28 | 0.0% | 16 | 0.0% | 28 | 0.0% |
| Other tools, instruments, equipment, unspecified, NEC | 798 | 0.8% | 768 | 0.8% | 873 | 0.9% | 824 | 0.8% | 895 | 0.9% | 973 | 1.0% | 1,039 | 1.1% |
| Subtotal | 6,930 | 6.7% | 6,541 | 6.4% | 6,366 | 6.6% | 6,493 | 6.4% | 6,741 | 6.5% | 6,395 | 6.5% | 6,509 | 6.8% |
| Vehicles | | | | | | | | | | | | | | |
| Highway vehicle | 3,448 | 3.3% | 3,174 | 3.1% | 3,169 | 3.3% | 3,302 | 3.3% | 3,455 | 3.3% | 3,171 | 3.2% | 3,320 | 3.5% |
| Plant and industrial vehicles, tractors | 2,917 | 2.8% | 2,800 | 2.8% | 2,721 | 2.8% | 2,919 | 2.9% | 3,026 | 2.9% | 2,883 | 2.9% | 2,693 | 2.8% |
| Air, water, rail vehicles | 220 | 0.2% | 206 | 0.2% | 190 | 0.2% | 206 | 0.2% | 254 | 0.2% | 243 | 0.2% | 228 | 0.2% |
| Vehicles, unspecified, NEC | 88 | 0.1% | 112 | 0.1% | 102 | 0.1% | 129 | 0.1% | 109 | 0.1% | 96 | 0.1% | 104 | 0.1% |
| Subtotal | 6,673 | 6.5% | 6,292 | 6.2% | 6,182 | 6.4% | 6,556 | 6.5% | 6,844 | 6.6% | 6,393 | 6.5% | 6,345 | 6.6% |
| Furniture and fixtures | 3,550 | 3.4% | 3,498 | 3.4% | 3,321 | 3.4% | 3,356 | 3.3% | 3,693 | 3.5% | 3,312 | 3.4% | 3,418 | 3.6% |
| Scrap, waste, debris | 2,753 | 2.7% | 2,475 | 2.4% | 2,410 | 2.5% | 2,217 | 2.2% | 2,264 | 2.2% | 2,186 | 2.2% | 1,823 | 1.9% |
| Chemicals and chemical products | 1,331 | 1.3% | 1,302 | 1.3% | 1,330 | 1.4% | 1,320 | 1.3% | 1,561 | 1.5% | 1,346 | 1.4% | 1,387 | 1.5% |
| Food products | 791 | 0.8% | 791 | 0.8% | 777 | 0.8% | 859 | 0.9% | 940 | 0.9% | 856 | 0.9% | 857 | 0.9% |
| Infectious and parasitic agents | 164 | 0.2% | 135 | 0.1% | 143 | 0.1% | 153 | 0.2% | 175 | 0.2% | 156 | 0.2% | 653 | 0.7% |
| Steam, vapour, liquids, NEC | 489 | 0.5% | 468 | 0.5% | 506 | 0.5% | 500 | 0.5% | 474 | 0.5% | 501 | 0.5% | 454 | 0.5% |
| Animals and animal products | 372 | 0.4% | 320 | 0.3% | 344 | 0.4% | 338 | 0.3% | 364 | 0.3% | 330 | 0.3% | 405 | 0.4% |
| Plants, trees, vegetation | 450 | 0.4% | 433 | 0.4% | 482 | 0.5% | 438 | 0.4% | 380 | 0.4% | 399 | 0.4% | 361 | 0.4% |
| Minerals, metallic and non-metallic | 325 | 0.3% | 264 | 0.3% | 289 | 0.3% | 308 | 0.3% | 313 | 0.3% | 317 | 0.3% | 322 | 0.3% |
| Apparel and textiles | 226 | 0.2% | 232 | 0.2% | 218 | 0.2% | 181 | 0.2% | 212 | 0.2% | 198 | 0.2% | 273 | 0.3% |
| Fire, flame and smoke | 261 | 0.3% | 304 | 0.3% | 286 | 0.3% | 267 | 0.3% | 294 | 0.3% | 248 | 0.3% | 230 | 0.2% |
| Paper, books and magazines | 208 | 0.2% | 231 | 0.2% | 194 | 0.2% | 185 | 0.2% | 194 | 0.2% | 177 | 0.2% | 224 | 0.2% |
| Temperature extremes (heat, cold) environmental | 33 | 0.0% | 29 | 0.0% | 27 | 0.0% | 44 | 0.0% | 22 | 0.0% | 88 | 0.1% | 109 | 0.1% |
| Atmospheric and environmental conditions (including weather) | 81 | 0.1% | 79 | 0.1% | 66 | 0.1% | 95 | 0.1% | 68 | 0.1% | 99 | 0.1% | 60 | 0.1% |
| Noise | 51 | 0.0% | 37 | 0.0% | 42 | 0.0% | 50 | 0.0% | 35 | 0.0% | 36 | 0.0% | 36 | 0.0% |
| Air pressure | 24 | 0.0% | 29 | 0.0% | 9 | 0.0% | 10 | 0.0% | 14 | 0.0% | 16 | 0.0% | 11 | 0.0% |
| Other sources, unclassified, NEC | 2,264 | 2.2% | 2,897 | 2.8% | 2,818 | 2.9% | 2,947 | 2.9% | 2,636 | 2.5% | 2,745 | 2.8% | 2,357 | 2.5% |
| Unknown | 1,555 | 1.5% | 2,811 | 2.8% | 3,054 | 3.1% | 3,720 | 3.7% | 2,137 | 2.1% | 931 | 0.9% | 901 | 0.9% |
| Total | 103,080 | 100% | 101,806 | 100% | 97,190 | 100% | 100,726 | 100% | 104,154 | 100% | 98,359 | 100% | 95,568 | 100% |

TABLE 12: LOST TIME CLAIMS BY OCCUPATION (1996 to 2002)

This table shows allowed lost time claims by worker's occupation for each year as at March 31 of the following year.

| Occupation | Year of injury or illness | | | | | | | | | | | | | |
|--|---------------------------|-------------|----------------|-------------|---------------|-------------|----------------|-------------|----------------|-------------|---------------|-------------|---------------|-------------|
| | 1996 | % | 1997 | % | 1998 | % | 1999 | % | 2000 | % | 2001 | % | 2002 | % |
| Transport, equipment operators and related | 30,607 | 29.7% | 29,767 | 29.2% | 28,774 | 29.6% | 29,490 | 29.3% | 29,960 | 28.8% | 28,710 | 29.2% | 27,669 | 29.0% |
| Sales and service | 23,088 | 22.4% | 22,750 | 22.3% | 21,702 | 22.3% | 22,450 | 22.3% | 24,009 | 23.1% | 23,428 | 23.8% | 23,347 | 24.4% |
| Processing and manufacturing machine operators and assemblers | 14,096 | 13.7% | 13,423 | 13.2% | 12,216 | 12.6% | 12,998 | 12.9% | 13,378 | 12.8% | 11,687 | 11.9% | 10,872 | 11.4% |
| Labourers in processing, manufacturing and utilities | 8,129 | 7.9% | 8,918 | 8.8% | 9,313 | 9.6% | 9,990 | 9.9% | 10,305 | 9.9% | 9,269 | 9.4% | 7,848 | 8.2% |
| Health services | 5,829 | 5.7% | 5,588 | 5.5% | 5,545 | 5.7% | 5,407 | 5.4% | 5,593 | 5.4% | 5,511 | 5.6% | 6,015 | 6.3% |
| Clerical occupations | 5,880 | 5.7% | 5,662 | 5.6% | 5,498 | 5.7% | 6,134 | 6.1% | 6,257 | 6.0% | 5,767 | 5.9% | 5,764 | 6.0% |
| Social science, education, government services and religion | 2,902 | 2.8% | 2,875 | 2.8% | 2,471 | 2.5% | 2,512 | 2.5% | 2,588 | 2.5% | 2,794 | 2.8% | 2,865 | 3.0% |
| Contractors, agriculture, horticulture and aquaculture | 1,636 | 1.6% | 1,503 | 1.5% | 1,528 | 1.6% | 1,473 | 1.5% | 1,477 | 1.4% | 1,456 | 1.5% | 1,525 | 1.6% |
| Managerial, administrative and related (including legislators and senior government officials) | 1,741 | 1.7% | 1,495 | 1.5% | 1,341 | 1.4% | 1,363 | 1.4% | 1,369 | 1.3% | 1,341 | 1.4% | 1,362 | 1.4% |
| Natural and applied sciences | 1,357 | 1.3% | 1,199 | 1.2% | 1,213 | 1.2% | 1,250 | 1.2% | 1,269 | 1.2% | 1,098 | 1.1% | 1,249 | 1.3% |
| Skilled administrative and business occupations | 775 | 0.8% | 770 | 0.8% | 662 | 0.7% | 682 | 0.7% | 723 | 0.7% | 735 | 0.7% | 668 | 0.7% |
| Processing, manufacturing and utilities, supervisors and skilled operators | 462 | 0.4% | 438 | 0.4% | 423 | 0.4% | 427 | 0.4% | 463 | 0.4% | 434 | 0.4% | 470 | 0.5% |
| Art, culture, recreation and sport | 504 | 0.5% | 461 | 0.5% | 466 | 0.5% | 525 | 0.5% | 463 | 0.4% | 444 | 0.5% | 458 | 0.5% |
| Logging and forestry | 313 | 0.3% | 257 | 0.3% | 281 | 0.3% | 262 | 0.3% | 262 | 0.3% | 237 | 0.2% | 221 | 0.2% |
| Mining, oil and gas | 323 | 0.3% | 330 | 0.3% | 267 | 0.3% | 243 | 0.2% | 216 | 0.2% | 185 | 0.2% | 186 | 0.2% |
| Business and finance | 116 | 0.1% | 89 | 0.1% | 100 | 0.1% | 106 | 0.1% | 109 | 0.1% | 117 | 0.1% | 125 | 0.1% |
| Fishing, hunting, and trapping | 22 | 0.0% | 26 | 0.0% | 16 | 0.0% | 22 | 0.0% | 14 | 0.0% | 13 | 0.0% | 12 | 0.0% |
| Occupation not stated | 5,300 | 5.1% | 6,255 | 6.1% | 5,374 | 5.5% | 5,392 | 5.4% | 5,699 | 5.5% | 5,133 | 5.2% | 4,912 | 5.1% |
| Total | 103,080 | 100% | 101,806 | 100% | 97,190 | 100% | 100,726 | 100% | 104,154 | 100% | 98,359 | 100% | 95,568 | 100% |

TABLE 13: LOST TIME CLAIMS BY STANDARD INDUSTRIAL CLASSIFICATION (SIC) (1996 to 2002)

This table shows allowed lost time claims by the industry in which the worker was employed, based on the 1980 Standard Industrial Classification (SIC), for each year as at March 31 of the following year. Because these numbers are based on a different classification standard, they cannot be compared to the numbers in Table 7.

Schedule 2 employers, for whom SIC codes are unavailable, are included in the “unclassified and unidentified” category.

| Industry | Year of injury or illness | | | | | | | | | | | | | |
|---|---------------------------|-------------|----------------|-------------|---------------|-------------|----------------|-------------|----------------|-------------|---------------|-------------|---------------|-------------|
| | 1996 | % | 1997 | % | 1998 | % | 1999 | % | 2000 | % | 2001 | % | 2002 | % |
| Manufacturing | 32,996 | 32.0% | 32,140 | 31.6% | 30,653 | 31.5% | 32,383 | 32.1% | 33,295 | 32.0% | 29,728 | 30.2% | 27,060 | 28.3% |
| Retail trade | 11,546 | 11.2% | 11,413 | 11.2% | 10,759 | 11.1% | 10,932 | 10.9% | 11,554 | 11.1% | 11,340 | 11.5% | 11,160 | 11.7% |
| Health and social services | 7,938 | 7.7% | 7,657 | 7.5% | 7,308 | 7.5% | 7,090 | 7.0% | 7,840 | 7.5% | 7,742 | 7.9% | 8,502 | 8.9% |
| Wholesale trade | 9,026 | 8.8% | 8,648 | 8.5% | 8,062 | 8.3% | 8,700 | 8.6% | 8,809 | 8.5% | 8,440 | 8.6% | 8,224 | 8.6% |
| Accommodation, food and beverage services | 6,319 | 6.1% | 6,341 | 6.2% | 6,264 | 6.4% | 6,478 | 6.4% | 7,237 | 6.9% | 6,804 | 6.9% | 6,708 | 7.0% |
| Transportation, communication and other utilities | 7,011 | 6.8% | 7,294 | 7.2% | 6,810 | 7.0% | 7,070 | 7.0% | 7,061 | 6.8% | 6,265 | 6.4% | 6,307 | 6.6% |
| Construction | 5,511 | 5.3% | 5,554 | 5.5% | 5,526 | 5.7% | 5,610 | 5.6% | 6,198 | 6.0% | 6,391 | 6.5% | 6,187 | 6.5% |
| Government | 8,887 | 8.6% | 8,158 | 8.0% | 7,398 | 7.6% | 5,613 | 5.6% | 5,403 | 5.2% | 4,907 | 5.0% | 4,866 | 5.1% |
| Business | 2,826 | 2.7% | 3,333 | 3.3% | 3,748 | 3.9% | 3,795 | 3.8% | 3,813 | 3.7% | 3,332 | 3.4% | 3,554 | 3.7% |
| Other services | 1,957 | 1.9% | 1,914 | 1.9% | 1,991 | 2.0% | 2,150 | 2.1% | 2,322 | 2.2% | 2,454 | 2.5% | 2,425 | 2.5% |
| Education | 4,250 | 4.1% | 4,006 | 3.9% | 3,133 | 3.2% | 2,739 | 2.7% | 2,356 | 2.3% | 1,950 | 2.0% | 1,866 | 2.0% |
| Agriculture | 1,150 | 1.1% | 1,189 | 1.2% | 1,148 | 1.2% | 1,059 | 1.1% | 1,052 | 1.0% | 1,121 | 1.1% | 1,174 | 1.2% |
| Finance, insurance and real estate | 651 | 0.6% | 654 | 0.6% | 596 | 0.6% | 601 | 0.6% | 573 | 0.6% | 543 | 0.6% | 528 | 0.6% |
| Personal and household services | 921 | 0.9% | 926 | 0.9% | 915 | 0.9% | 901 | 0.9% | 526 | 0.5% | 508 | 0.5% | 432 | 0.5% |
| Mining (including milling, quarrying, oil well) | 522 | 0.5% | 486 | 0.5% | 457 | 0.5% | 442 | 0.4% | 425 | 0.4% | 404 | 0.4% | 370 | 0.4% |
| Logging and forestry | 316 | 0.3% | 280 | 0.3% | 272 | 0.3% | 305 | 0.3% | 280 | 0.3% | 249 | 0.3% | 266 | 0.3% |
| Membership organizations | 144 | 0.1% | 156 | 0.2% | 132 | 0.1% | 128 | 0.1% | 153 | 0.1% | 140 | 0.1% | 155 | 0.2% |
| Fishing and trapping | 18 | 0.0% | 29 | 0.0% | 19 | 0.0% | 33 | 0.0% | 20 | 0.0% | 12 | 0.0% | 17 | 0.0% |
| Unclassified and unidentified | 1,091 | 1.1% | 1,628 | 1.6% | 1,999 | 2.1% | 4,697 | 4.7% | 5,237 | 5.0% | 6,029 | 6.1% | 5,767 | 6.0% |
| Total | 103,080 | 100% | 101,806 | 100% | 97,190 | 100% | 100,726 | 100% | 104,154 | 100% | 98,359 | 100% | 95,568 | 100% |

Fatality Claims

Tables 14 and 15

These tables show claims made in connection with fatalities. They show numbers based on the year in which claims were registered and the year in which claims were allowed. These tables do not indicate the year in which the fatalities occurred.

Fatality claims are divided into the following mutually exclusive categories:

- Fatalities due to disease
- Fatalities due to traumatic accidents (an accident at work resulted in the worker's death)
- Fatalities that occurred while the person was receiving a pre-1990, 100% permanent disability pension from the WSIB

Table 14: FATALITY CLAIMS BY YEAR OF REGISTRATION (1993 to 2002)

This table shows fatality claims registered in each year.

| | Year registered | | | | | | | | | | | | | | | | | | | |
|--|-----------------|------|------|------|------|------|------|------|------|------|------|------|------|------|------|------|------|------|------|------|
| | 1993 | % | 1994 | % | 1995 | % | 1996 | % | 1997 | % | 1998 | % | 1999 | % | 2000 | % | 2001 | % | 2002 | % |
| Diseases | 256 | 57% | 237 | 55% | 261 | 58% | 192 | 49% | 199 | 56% | 218 | 55% | 239 | 58% | 285 | 62% | 262 | 58% | 387 | 65% |
| Traumatic accidents | 122 | 27% | 107 | 25% | 119 | 26% | 119 | 31% | 88 | 25% | 114 | 29% | 105 | 26% | 125 | 27% | 136 | 30% | 136 | 23% |
| Pre-1990 100% permanent disability pensions | 68 | 15% | 86 | 20% | 70 | 16% | 77 | 20% | 67 | 19% | 66 | 17% | 65 | 16% | 51 | 11% | 55 | 12% | 73 | 12% |
| Total | 446 | 100% | 430 | 100% | 450 | 100% | 388 | 100% | 354 | 100% | 398 | 100% | 409 | 100% | 461 | 100% | 453 | 100% | 596 | 100% |

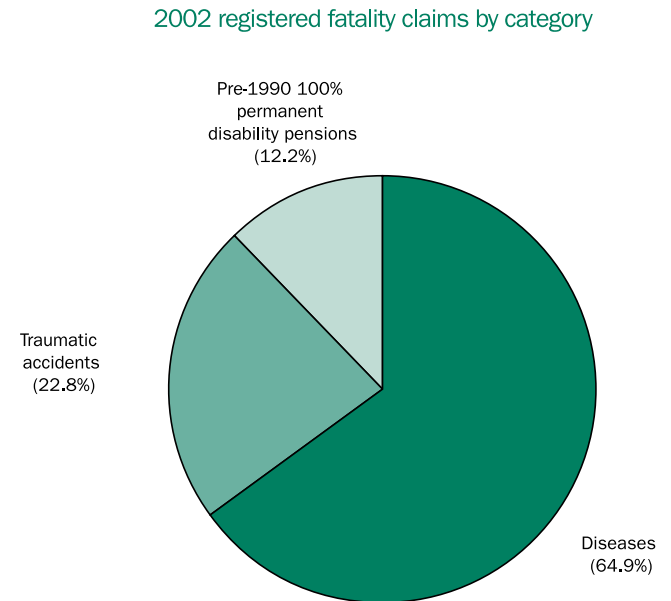
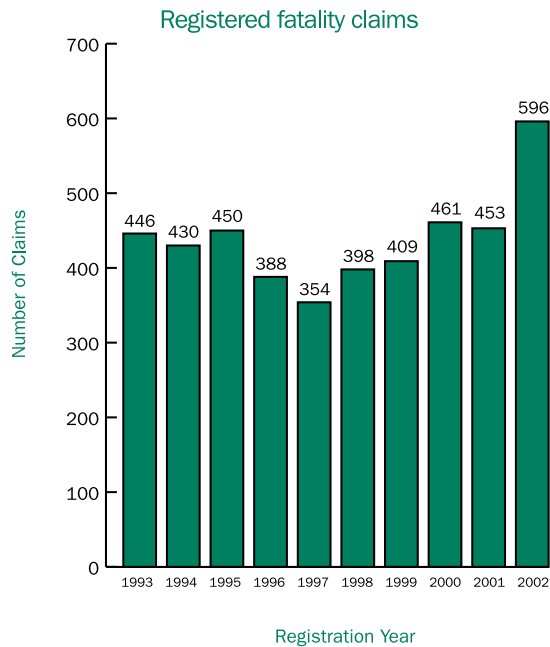
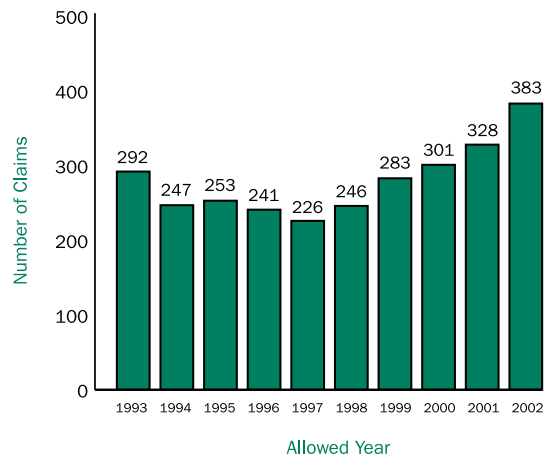


TABLE 15: OCCUPATIONAL FATALITY CLAIMS BY YEAR ALLOWED (1993 to 2002)

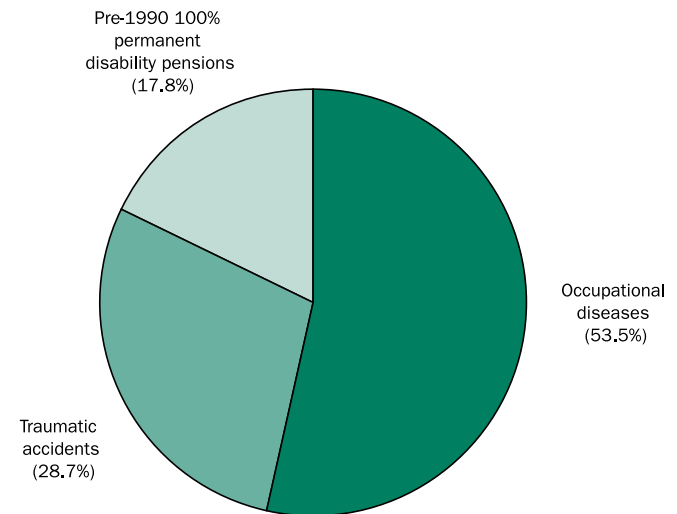
This table shows occupational fatality claims allowed in each year

| | Year allowed | | | | | | | | | | | | | | | | | | | |
|--|--------------|------|------|------|------|------|------|------|------|------|------|------|------|------|------|------|------|------|------|------|
| | 1993 | % | 1994 | % | 1995 | % | 1996 | % | 1997 | % | 1998 | % | 1999 | % | 2000 | % | 2001 | % | 2002 | % |
| Occupational diseases | 111 | 38% | 85 | 34% | 103 | 41% | 83 | 34% | 94 | 42% | 91 | 37% | 134 | 47% | 143 | 48% | 166 | 51% | 205 | 54% |
| Traumatic accidents | 100 | 34% | 76 | 31% | 76 | 30% | 82 | 34% | 64 | 28% | 88 | 36% | 85 | 30% | 107 | 36% | 105 | 32% | 110 | 29% |
| Pre-1990 100% permanent disability pensions | 81 | 28% | 86 | 35% | 74 | 29% | 76 | 32% | 68 | 30% | 67 | 27% | 64 | 23% | 51 | 17% | 57 | 17% | 68 | 18% |
| Total | 292 | 100% | 247 | 100% | 253 | 100% | 241 | 100% | 226 | 100% | 246 | 100% | 283 | 100% | 301 | 100% | 328 | 100% | 383 | 100% |

Allowed occupational fatality claims



2002 allowed occupational fatality claims by category



Average Duration of Wage Loss Benefits

Table 16

This table shows the average duration of payment of temporary disability benefits (1993 to 1997) and Loss of Earnings (LOE) benefits (1998 to 2002). The average only includes days for which wage loss benefits were paid in the first 12 weeks after injury or illness.

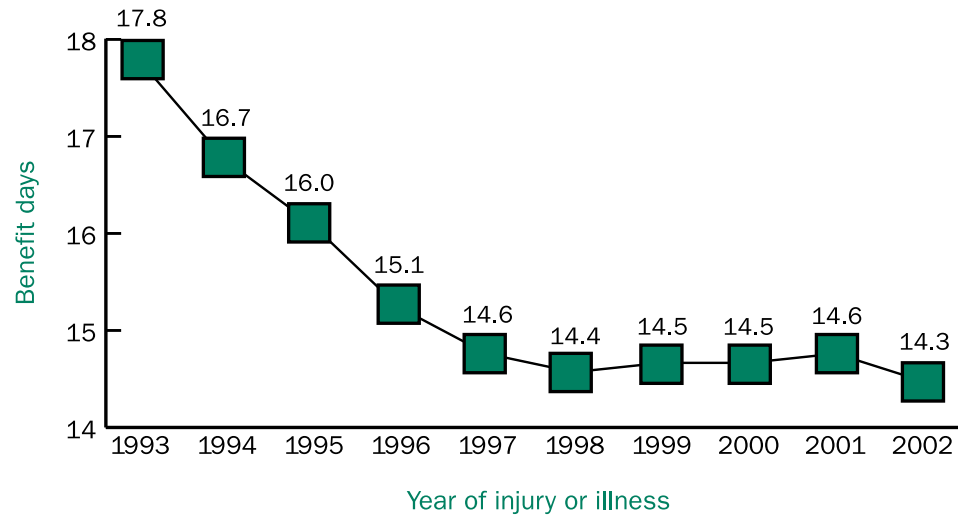
The average number of days for which wage loss benefits were paid is shown by year of injury or illness. Numbers are as at March 31 of the following year

TABLE 16: AVERAGE DURATION OF WAGE LOSS BENEFITS BY YEAR OF INJURY OR ILLNESS (1993 to 2002)

This table shows the average duration of payment of temporary disability benefits (1993 to 1997) and Loss of Earnings (LOE) benefits (1998 to 2002). The average only includes days for which wage loss benefits were paid in the first 12 weeks after injury or illness.

| Average duration of wage loss benefits | | | | | | | | | | |
|--|------|------|------|------|------|------|------|------|------|------|
| Year of injury or illness | | | | | | | | | | |
| | 1993 | 1994 | 1995 | 1996 | 1997 | 1998 | 1999 | 2000 | 2001 | 2002 |
| Benefit days | 17.8 | 16.7 | 16.0 | 15.1 | 14.6 | 14.4 | 14.5 | 14.5 | 14.6 | 14.3 |

Average duration of wage loss benefits



Future Economic Loss (FEL) Awards

Table 17

This table shows active Future Economic Loss (FEL) awards by percentage of wage loss, and active supplements. Benefits for future economic loss of earnings are awarded under Section 43 of the *Workers' Compensation Act*.

These benefits relate to injuries and illnesses that occurred between January 2, 1990 and December 31, 1997. Workers who receive short-term benefits for 12 months and workers who are permanently impaired are entitled to FEL benefits.

The amount of the WSIB payment is 90% of the difference between the worker's net average pre-injury-or-illness earnings and the net average earnings that the worker is earning, or is considered likely to be able to earn in the future.

Workers who are cooperating in Early and Safe Return to Work (ESRTW) or Labour Market Re-entry (LMR) activities, or in medical rehabilitation programs, are also entitled to FEL supplements.

TABLE 17: ACTIVE FUTURE ECONOMIC LOSS (FEL) AWARDS BY PERCENTAGE OF WAGE LOSS AND ACTIVE SUPPLEMENTS (1993 to 2002)

This table shows Future Economic Loss (FEL) awards active at the end of each year by percentage of wage loss, and supplements active at the end of each year.

| Percentage of Wage Loss | | FEL awards | | | | | | | | | | | | | | | | | | |
|-------------------------|---------------|-------------|---------------|-------------|---------------|-------------|---------------|-------------|---------------|-------------|---------------|-------------|---------------|-------------|---------------|-------------|---------------|-------------|---------------|-------------|
| | | Year | | | | | | | | | | | | | | | | | | |
| | | 1993 | % | 1994 | % | 1995 | % | 1996 | % | 1997 | % | 1998 | % | 1999 | % | 2000 | % | 2001 | % | 2002 |
| 0.01 - 9.99% | 6,164 | 28.9% | 4,156 | 18.0% | 2,809 | 11.3% | 2,384 | 8.6% | 2,104 | 7.4% | 1,959 | 6.7% | 1,690 | 6.0% | 1,520 | 5.5% | 1,335 | 4.9% | 1,174 | 4.4% |
| 10.00 - 19.99% | 2,580 | 12.1% | 3,188 | 13.8% | 3,711 | 14.9% | 4,234 | 15.3% | 4,284 | 15.1% | 4,532 | 15.5% | 4,466 | 15.9% | 4,537 | 16.3% | 4,492 | 16.5% | 4,334 | 16.3% |
| 20.00 - 29.99% | 3,135 | 14.7% | 3,803 | 16.5% | 4,415 | 17.8% | 5,053 | 18.2% | 5,271 | 18.6% | 5,558 | 19.0% | 5,395 | 19.2% | 5,276 | 19.0% | 5,179 | 19.0% | 5,041 | 18.9% |
| 30.00 - 39.99% | 3,105 | 14.6% | 3,883 | 16.8% | 4,628 | 18.6% | 5,307 | 19.1% | 5,333 | 18.9% | 5,439 | 18.6% | 5,147 | 18.3% | 4,964 | 17.9% | 4,769 | 17.5% | 4,653 | 17.4% |
| 40.00 - 49.99% | 2,522 | 11.8% | 3,147 | 13.6% | 3,628 | 14.6% | 4,196 | 15.1% | 4,177 | 14.8% | 4,144 | 14.1% | 3,787 | 13.4% | 3,607 | 13.0% | 3,424 | 12.6% | 3,302 | 12.4% |
| 50.00 - 99.99% | 2,195 | 10.3% | 2,610 | 11.3% | 2,895 | 11.6% | 3,109 | 11.2% | 2,883 | 10.2% | 2,796 | 9.5% | 2,604 | 9.2% | 2,449 | 8.8% | 2,296 | 8.4% | 2,214 | 8.3% |
| 100% | 1,632 | 7.7% | 2,312 | 10.0% | 2,767 | 11.1% | 3,468 | 12.5% | 4,239 | 15.0% | 4,872 | 16.6% | 5,077 | 18.0% | 5,408 | 19.5% | 5,753 | 21.1% | 5,949 | 22.3% |
| Total | 21,333 | 100% | 23,099 | 100% | 24,853 | 100% | 27,751 | 100% | 28,291 | 100% | 29,300 | 100% | 28,166 | 100% | 27,761 | 100% | 27,248 | 100% | 26,667 | 100% |

| | | Supplements | | | | | | | | | | | | | | | | | | |
|--------------|--------------|-------------|--------------|-------------|--------------|-------------|--------------|-------------|--------------|-------------|--------------|-------------|--------------|-------------|--------------|-------------|--------------|-------------|--------------|-------------|
| | | 1993 | % | 1994 | % | 1995 | % | 1996 | % | 1997 | % | 1998 | % | 1999 | % | 2000 | % | 2001 | % | 2002 |
| Total | 7,349 | 100% | 6,824 | 100% | 6,653 | 100% | 7,025 | 100% | 5,774 | 100% | 4,274 | 100% | 2,959 | 100% | 2,254 | 100% | 1,768 | 100% | 1,312 | 100% |

Non-economic Loss (NEL) Awards

Table 18

This table shows the number of Non-Economic Loss (NEL) awards by percentage of permanent impairment. Benefits for non-economic loss are paid under Section 42 of the *Workers' Compensation Act* and Section 46 of the *Workplace Safety and Insurance Act*. NEL benefits relate to injuries and illnesses that occurred after January 1, 1990. Workers who suffer permanent impairment due to workplace injuries or illnesses are entitled to NEL benefits.

Workers are eligible for NEL benefits if they reach maximum medical rehabilitation and

permanent impairment is considered likely. A worker reaches maximum medical rehabilitation when there is unlikely to be any further significant improvement in his or her medical condition. A medical assessment is then conducted to determine the level of impairment, which is expressed as a percentage. To determine the amount of the NEL benefit, the percentage is then multiplied by a number that varies according to the year of the injury and the worker's age.

The first NEL benefits were paid in April 1992.

TABLE 18: NON-ECONOMIC LOSS (NEL) AWARDS BY PERCENTAGE OF PERMANENT IMPAIRMENT (1993 to 2002)

This table shows the number of Non-Economic Loss (NEL) awards made during each year by percentage of permanent impairment.

| Percentage of permanent impairment | NEL awards | | | | | | | | | | | | | | | | | | | |
|------------------------------------|----------------------|-------|----------------------|-------|----------------------|-------|----------------------|-------|----------------------|-------|----------------------|-------|----------------------|-------|----------------------|-------|----------------------|-------|----------------------|-------|
| | Year of award | | | | | | | | | | | | | | | | | | | |
| | 1993 | | 1994 | | 1995 | | 1996 | | 1997 | | 1998 | | 1999 | | 2000 | | 2001 | | 2002 | |
| | Number of NEL awards | % | Number of NEL awards | % | Number of NEL awards | % | Number of NEL awards | % | Number of NEL awards | % | Number of NEL awards | % | Number of NEL awards | % | Number of NEL awards | % | Number of NEL awards | % | Number of NEL awards | % |
| 0.01 - 5.00% | 4,331 | 24.9% | 6,896 | 29.4% | 3,731 | 26.4% | 4,015 | 26.0% | 3,294 | 26.9% | 2,611 | 25.4% | 2,320 | 23.5% | 2,855 | 26.5% | 2,616 | 23.3% | 3,328 | 20.7% |
| 5.01 - 10.00% | 4,029 | 23.1% | 6,191 | 26.4% | 3,173 | 22.4% | 3,371 | 21.8% | 2,795 | 22.8% | 2,359 | 23.0% | 2,391 | 24.3% | 2,651 | 24.6% | 2,702 | 24.1% | 3,842 | 23.9% |
| 10.01 - 15.00% | 3,457 | 19.9% | 4,293 | 18.3% | 2,428 | 17.2% | 2,778 | 18.0% | 2,119 | 17.3% | 1,817 | 17.7% | 1,780 | 18.1% | 1,832 | 17.0% | 2,206 | 19.6% | 3,259 | 20.3% |
| 15.01 - 20.00% | 2,636 | 15.1% | 2,979 | 12.7% | 1,884 | 13.3% | 2,043 | 13.2% | 1,514 | 12.4% | 1,332 | 13.0% | 1,268 | 12.9% | 1,281 | 11.9% | 1,421 | 12.7% | 2,077 | 12.9% |
| 20.01 - 25.00% | 1,700 | 9.8% | 1,574 | 6.7% | 1,460 | 10.3% | 1,606 | 10.4% | 1,179 | 9.6% | 981 | 9.6% | 965 | 9.8% | 932 | 8.7% | 982 | 8.7% | 1,503 | 9.4% |
| 25.01 - 30.00% | 742 | 4.3% | 768 | 3.3% | 774 | 5.5% | 845 | 5.5% | 665 | 5.4% | 551 | 5.4% | 504 | 5.1% | 533 | 4.9% | 547 | 4.9% | 870 | 5.4% |
| 30.01 - 40.00% | 344 | 2.0% | 467 | 2.0% | 435 | 3.1% | 503 | 3.3% | 423 | 3.5% | 344 | 3.4% | 363 | 3.7% | 380 | 3.5% | 393 | 3.5% | 678 | 4.2% |
| 40.01 - 60.00% | 91 | 0.5% | 163 | 0.7% | 158 | 1.1% | 199 | 1.3% | 154 | 1.3% | 147 | 1.4% | 160 | 1.6% | 151 | 1.4% | 163 | 1.5% | 262 | 1.6% |
| 60.01 - 99.99% | 39 | 0.2% | 35 | 0.1% | 43 | 0.3% | 44 | 0.3% | 57 | 0.5% | 53 | 0.5% | 44 | 0.4% | 58 | 0.5% | 83 | 0.7% | 82 | 0.5% |
| 100% | 44 | 0.3% | 57 | 0.2% | 56 | 0.4% | 60 | 0.4% | 57 | 0.5% | 71 | 0.7% | 63 | 0.6% | 99 | 0.9% | 116 | 1.0% | 153 | 1.0% |
| Total | 17,413 | 100% | 23,423 | 100% | 14,142 | 100% | 15,464 | 100% | 12,257 | 100% | 10,266 | 100% | 9,858 | 100% | 10,772 | 100% | 11,229 | 100% | 16,054 | 100% |

Periodic Pensions and Supplements | Tables 19 and 20

Pensions and supplements are payable to injured workers who have a permanent impairment resulting from an accident that occurred prior to January 2, 1990. They are paid under the *Worker's Compensation Act*. These tables show pension awards and active pensions by percentage of permanent disability; and supplement awards and active supplements. Supplementary payments shown are broken down as follows:

- Section 147(4): supplements awarded to workers who are not likely to benefit from a Labour Market Re-entry (LMR) plan; or whose earning capacity has not increased sufficiently after an LMR program. The supplement is paid until the worker is eligible for federal old age security benefits.

- Section 147(2): supplements awarded to workers who are likely to benefit from an LMR plan (which would enable them to approximate their pre-injury-or-illness earnings).
- Section 147(14): additional payments awarded to workers who have been awarded a supplement under Section 147(4); or who would have been receiving the supplement had they not become eligible for federal old age security benefits.

Figures exclude lump sum awards and reassessments. These tables do not indicate the number of workers receiving pensions and/or supplements because pensioners can receive more than one award, or have more than one pension active, in a single year.

TABLE 19: PERIODIC PENSIONS AWARDED BY PERCENTAGE OF PERMANENT DISABILITY AND SUPPLEMENTS AWARDED (1993 to 2002)

This table shows the number of periodic pensions awarded in each year by percentage of permanent disability. It also shows supplements awarded by year. A large number of supplements were awarded in 1995 due to an amendment to the *Workers' Compensation Act* (Section 147(14)) that provides for an additional supplementary payment for many pension recipients.

| Life and provisional periodic pension awards | | | | | | | | | | | | | | | | | | | | |
|---|-------------|----------|-------------|----------|-------------|----------|-------------|----------|-------------|----------|-------------|----------|-------------|----------|-------------|----------|-------------|----------|-------------|----------|
| Year of award | | | | | | | | | | | | | | | | | | | | |
| Percentage of disability | 1993 | % | 1994 | % | 1995 | % | 1996 | % | 1997 | % | 1998 | % | 1999 | % | 2000 | % | 2001 | % | 2002 | % |
| 10.0% or less | 3,312 | 59% | 1,761 | 60% | 1,089 | 63% | 822 | 64% | 517 | 60% | 421 | 63% | 386 | 62% | 306 | 58% | 260 | 55% | 232 | 55% |
| 10.1 - 20.0% | 1,768 | 31% | 902 | 31% | 511 | 29% | 369 | 29% | 266 | 31% | 192 | 29% | 174 | 28% | 158 | 30% | 163 | 34% | 132 | 31% |
| 20.1 - 50.0% | 499 | 9% | 254 | 9% | 120 | 7% | 81 | 6% | 65 | 8% | 46 | 7% | 49 | 8% | 57 | 11% | 47 | 10% | 54 | 13% |
| 50.1 - 99.9% | 47 | 1% | 25 | 1% | 13 | 1% | 3 | 0% | 7 | 1% | 4 | 1% | 3 | 0% | 5 | 1% | 3 | 1% | 2 | 0% |
| 100% | 30 | 1% | 8 | 0% | 8 | 1% | 1 | 0% | 2 | 0% | 1 | 0% | 6 | 1% | 3 | 1% | 1 | 0% | 2 | 0% |
| Total | 5,656 | 100% | 2,950 | 100% | 1,741 | 100% | 1,276 | 100% | 857 | 100% | 664 | 100% | 618 | 100% | 529 | 100% | 474 | 100% | 422 | 100% |

| Supplements | | | | | | | | | | | | | | | | | | | | |
|------------------------|-------------|----------|-------------|----------|-------------|----------|-------------|----------|-------------|----------|-------------|----------|-------------|----------|-------------|----------|-------------|----------|-------------|----------|
| Year of award | | | | | | | | | | | | | | | | | | | | |
| | 1993 | % | 1994 | % | 1995 | % | 1996 | % | 1997 | % | 1998 | % | 1999 | % | 2000 | % | 2001 | % | 2002 | % |
| Section 147(4) | 2,813 | 52% | 1,674 | 56% | 1,721 | 3% | 1,301 | 36% | 1,031 | 39% | 849 | 42% | 573 | 42% | 567 | 42% | 467 | 42% | 468 | 42% |
| Section 147(2) | 2,612 | 48% | 1,314 | 44% | 958 | 2% | 572 | 16% | 356 | 13% | 156 | 8% | 106 | 8% | 111 | 8% | 100 | 9% | 94 | 9% |
| Section 147(14) | | | | | 51,378 | 95% | 1,713 | 48% | 1,261 | 48% | 1,019 | 50% | 699 | 51% | 667 | 50% | 547 | 49% | 542 | 49% |
| Total | 5,425 | 100% | 2,988 | 100% | 54,057 | 100% | 3,586 | 100% | 2,648 | 100% | 2,024 | 100% | 1,378 | 100% | 1,345 | 100% | 1,114 | 100% | 1,104 | 100% |

TABLE 20: ACTIVE PERIODIC PENSIONS BY PERCENTAGE OF PERMANENT DISABILITY AND ACTIVE SUPPLEMENTS (1993 to 2002)

This table shows the number of periodic pension awards active at the end of each year by percentage of permanent disability. It also shows active supplements by year. Supplements under section 147(14) of the Workers' Compensation Act became available in 1995 when the *Workers' Compensation Act* was amended.

| Life and provisional periodic pension awards | | | | | | | | | | | | | | | | | | | | |
|--|---------|------|---------|------|---------|------|---------|------|---------|------|---------|------|---------|------|---------|------|---------|------|---------|------|
| Year | | | | | | | | | | | | | | | | | | | | |
| Percentage of disability | 1993 | % | 1994 | % | 1995 | % | 1996 | % | 1997 | % | 1998 | % | 1999 | % | 2000 | % | 2001 | % | 2002 | % |
| 10.0% or less | 74,569 | 43% | 74,005 | 43% | 72,751 | 43% | 71,239 | 42% | 69,847 | 42% | 68,227 | 42% | 66,623 | 42% | 64,715 | 41% | 63,343 | 41% | 61,634 | 41% |
| 10.1 - 20.0% | 66,589 | 39% | 66,718 | 39% | 66,321 | 39% | 65,628 | 39% | 64,861 | 39% | 63,889 | 39% | 62,863 | 39% | 61,461 | 39% | 60,486 | 39% | 59,345 | 39% |
| 20.1 - 30.0% | 17,690 | 10% | 17,872 | 10% | 17,952 | 11% | 17,988 | 11% | 17,958 | 11% | 17,945 | 11% | 17,846 | 11% | 17,797 | 11% | 17,824 | 12% | 17,753 | 12% |
| 30.1 - 50.0% | 8,264 | 5% | 8,362 | 5% | 8,351 | 5% | 8,331 | 5% | 8,292 | 5% | 8,237 | 5% | 8,267 | 5% | 8,261 | 5% | 8,282 | 5% | 8,312 | 5% |
| 50.1% or more | 4,962 | 3% | 4,919 | 3% | 4,891 | 3% | 4,825 | 3% | 4,751 | 3% | 4,702 | 3% | 4,662 | 3% | 4,622 | 3% | 4,593 | 3% | 4,519 | 3% |
| Total | 172,074 | 100% | 171,876 | 100% | 170,266 | 100% | 168,011 | 100% | 165,709 | 100% | 163,000 | 100% | 160,261 | 100% | 156,856 | 100% | 154,528 | 100% | 151,563 | 100% |

| Supplements | | | | | | | | | | | | | | | | | | | | |
|------------------------|--------|------|--------|------|--------|------|--------|------|--------|------|--------|------|--------|------|--------|------|--------|------|--------|------|
| | 1993 | % | 1994 | % | 1995 | % | 1996 | % | 1997 | % | 1998 | % | 1999 | % | 2000 | % | 2001 | % | 2002 | % |
| Section 147(4) | 35,343 | 88% | 31,556 | 90% | 31,246 | 38% | 30,539 | 37% | 29,255 | 36% | 27,859 | 36% | 26,218 | 35% | 24,825 | 34% | 23,182 | 33% | 21,756 | 32% |
| Section 147(2) | 4,757 | 12% | 3,626 | 10% | 2,819 | 3% | 2,100 | 3% | 1,413 | 2% | 673 | 1% | 410 | 1% | 284 | 0% | 248 | 0% | 202 | 0% |
| Section 147(14) | | | | | 49,179 | 59% | 49,667 | 60% | 49,764 | 62% | 49,597 | 63% | 49,020 | 65% | 48,362 | 66% | 47,777 | 67% | 46,994 | 68% |
| Total | 40,100 | 100% | 35,182 | 100% | 83,244 | 100% | 82,306 | 100% | 80,432 | 100% | 78,129 | 100% | 75,648 | 100% | 73,471 | 100% | 71,207 | 100% | 68,952 | 100% |

Safety starts with you

www.wsib.on.ca

