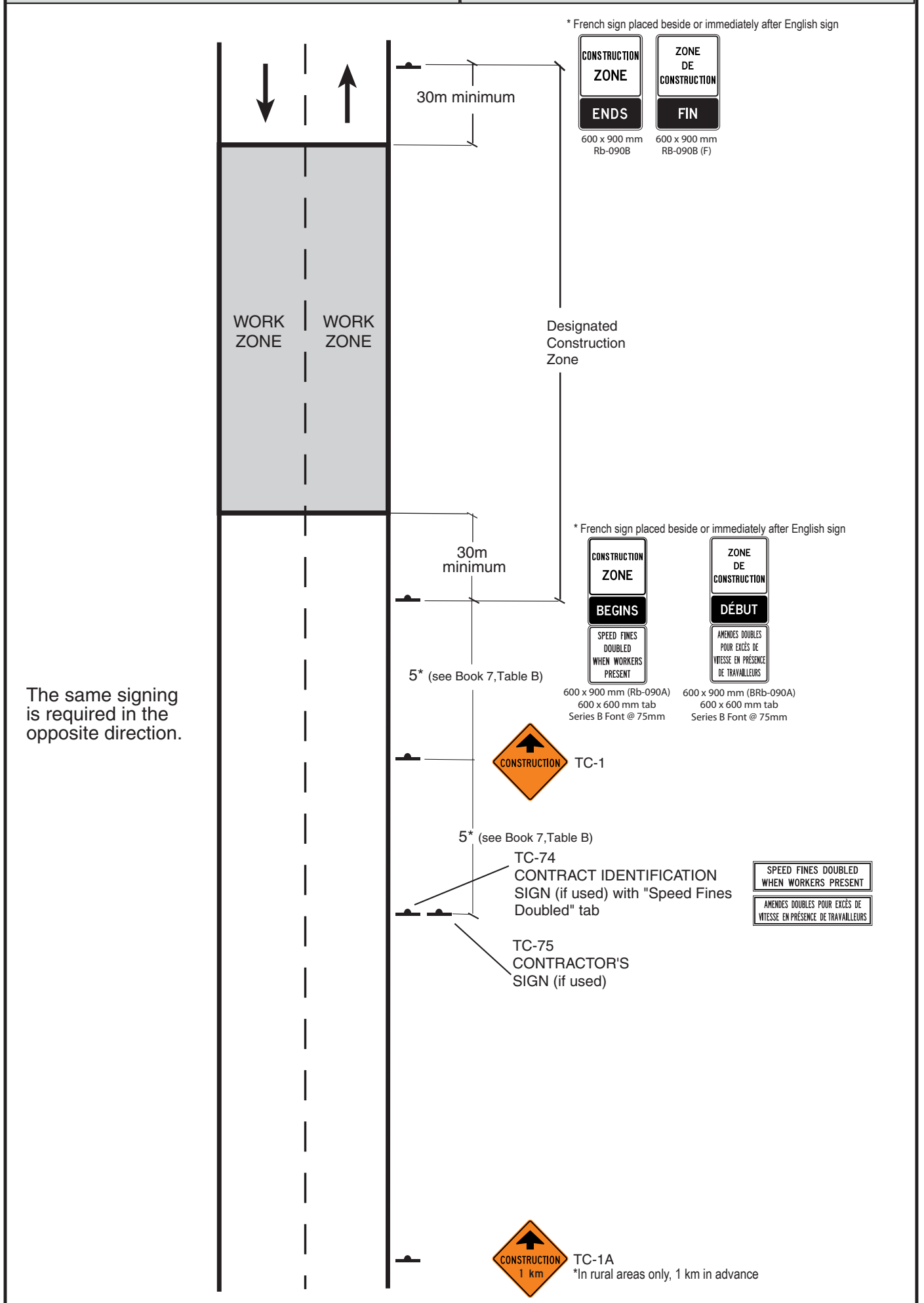


Schedule A - Municipal Roads

Two Lane Road
Multi-Lane Road
(Non-Freeway Undivided)

Long Duration

****NOTE:**
This layout is to illustrate the placement of the new speed fine signs. It does not replace Figure TL-1 in OTM Book 7 - Construction Zone Advisory Signing.



Construction Zone Speed Fines
Sign Layout - Non-Freeway
(Municipal Roads)



Ministry of Transportation

The Traffic Office

Traffic Operations Engineering Section

May 5, 2006

Schedule B - Municipal Roads

Multi-Lane Road
(Non-Freeway Divided and Freeway)

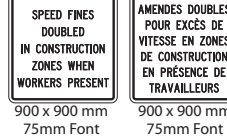
Long Duration

****NOTE:**
This layout is to illustrate the placement of the new speed fine signs. It does not replace Figure TL-2 in OTM Book 7 - Construction Zone Advisory Signing.

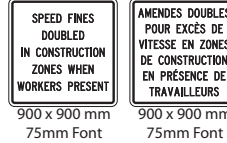
* French sign placed beside or immediately after English sign



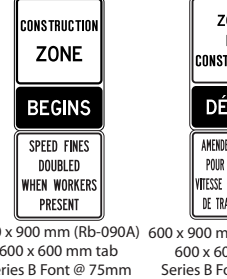
* French sign placed beside or immediately after English sign



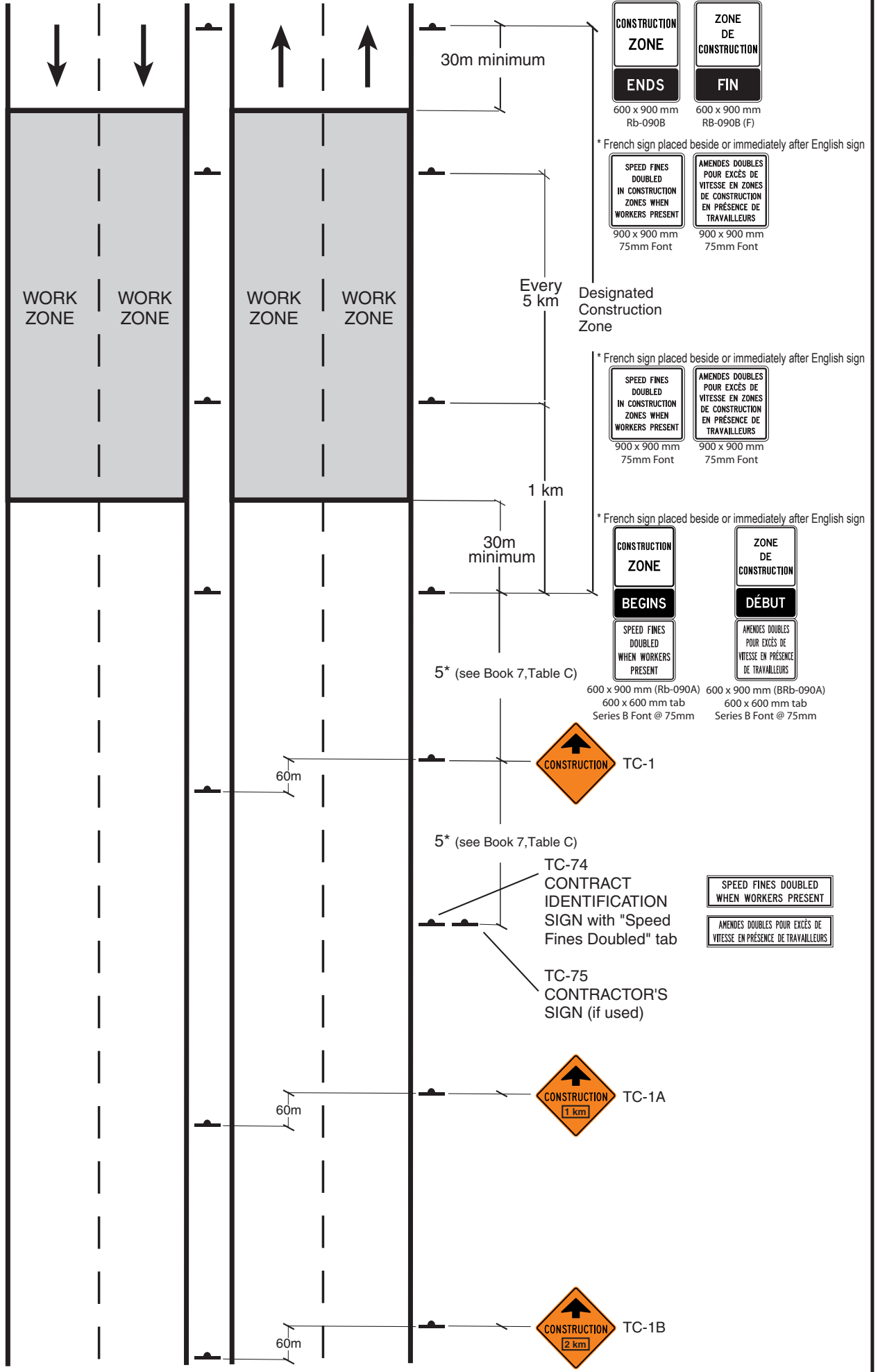
* French sign placed beside or immediately after English sign



* French sign placed beside or immediately after English sign



The same signing is required in the opposite direction.



Construction Zone Speed Fines Sign Layout - Multi-Lane Road (Non-Freeway Divided and Freeway) (Municipal Roads)

Ontario
Ministry of Transportation
The Traffic Office
Traffic Operations Engineering Section

May 5, 2006