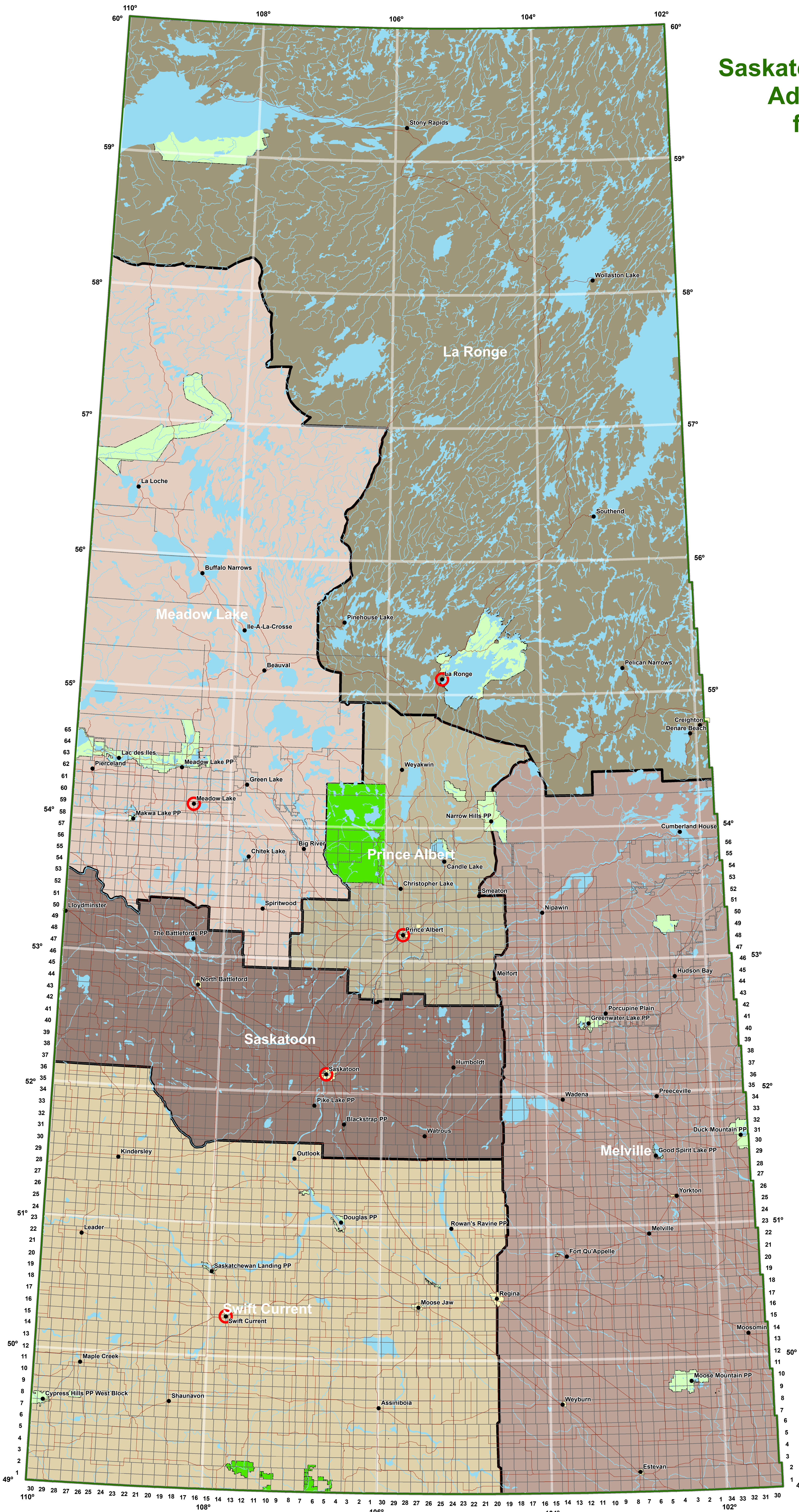

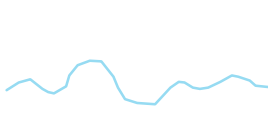

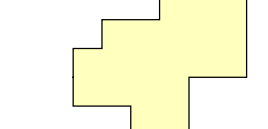


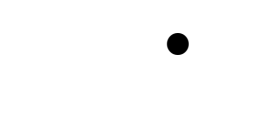




Saskatchewan Environment Administrative Map for Oil and Gas

Saskatchewan, Canada



-  Highway
-  River
-  Waterbody
-  City
-  Township Grid
-  EcoRegional Office
-  Department Office
-  National Park
-  Provincial Park

SE Oil & Gas Districts

District Name

-  La Ronge
-  Meadow Lake
-  Melville
-  Prince Albert
-  Saskatoon
-  Swift Current

SE Oil & Gas District Contacts:

La Ronge
 Meadow Lake 236-7553
 Prince Albert 953-2878
 Saskatoon 933-7933
 933-5026
 Melville 728-7494
 Swift Current 778-8261

Environmental Assessment Branch
 Regina 787-6241

Projection: Universal Transverse Mercator
 Datum: NAD83CSRS98
 Scale: 1:1,200,000
 Map Size: 35 by 45
 Date: January 3, 2005
 Branch: Geomatics Services Section
 Saskatchewan Environment

Source Data:
 Highway - rhoracle2 (SURN) highway dissolve
 Parks - rhoracle2 Administrative Park
 Oil & Gas District Boundary - Lori Arnold
 waterbody - NTS50
 Township Grid - ISC Cadastre December, 2005
 Department Office/Ecoregional Office - Darren Chapman
 Saskatchewan Boundary - rhoracle2 (admin_sask_boundary)
 City - rhoracle2 (basemaps_city_1m)



Saskatchewan
Environment

