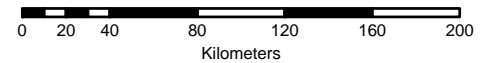


Saskatchewan Environment COMPLIANCE & FIELD SERVICES

SASKATCHEWAN
CANADA



Legend

- * Compliance & Field Services Office
 - Boundary Separating North and South Compliance & field Services
 - Field Office Area
 - ▨ Air Weapons Range
 - Highway
 - ~ Water Course
 - ☪ Water Body
 - Provincial Park
 - ▨ National Park
- Northern Field Services**
- Beauval Compliance Area
 - Creighton Compliance Area
 - Hudson Bay Compliance Area
 - La Ronge Compliance Area
 - Meadow Lake Compliance Area
 - Nipawin Compliance Area
 - Prince Albert Compliance Area
- Southern Field Services**
- North Battleford Compliance Area
 - Regina Compliance Area
 - Saskatoon Compliance Area
 - Swift Current Compliance Area
 - Melville Compliance Area

Disclaimer:

This map was prepared for the Government of Saskatchewan's Internal purposes only, and the Saskatchewan Government does not warrant that this map is appropriate for any other purpose.

It is the responsibility of anyone using this map to verify all information shown on this map, and neither the Minister nor the Government of Saskatchewan accepts any responsibility for any losses or damages arising from anyone using this map.

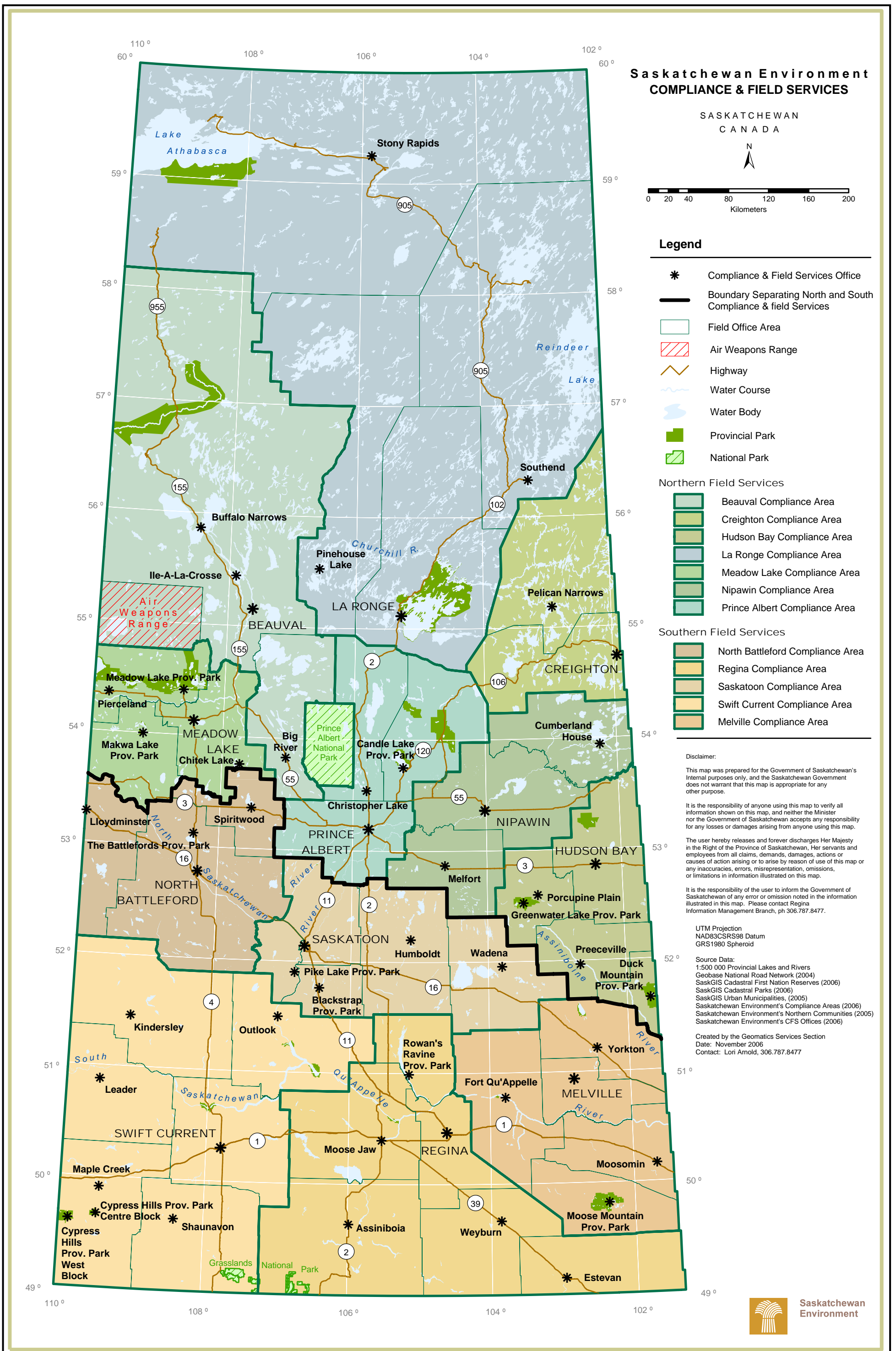
The user hereby releases and forever discharges Her Majesty in the Right of the Province of Saskatchewan, Her servants and employees from all claims, demands, damages, actions or causes of action arising or to arise by reason of use of this map or any inaccuracies, errors, misrepresentation, omissions, or limitations in information illustrated on this map.

It is the responsibility of the user to inform the Government of Saskatchewan of any error or omission noted in the information illustrated in this map. Please contact Regina Information Management Branch, ph 306.787.8477.

UTM Projection
NAD83CSRS98 Datum
GRS1980 Spheroid

Source Data:
1:500 000 Provincial Lakes and Rivers
Geobase National Road Network (2004)
SaskGIS Cadastral First Nation Reserves (2006)
SaskGIS Cadastral Parks (2006)
SaskGIS Urban Municipalities, (2005)
Saskatchewan Environment's Compliance Areas (2006)
Saskatchewan Environment's Northern Communities (2005)
Saskatchewan Environment's CFS Offices (2006)

Created by the Geomatics Services Section
Date: November 2006
Contact: Lori Arnold, 306.787.8477



Saskatchewan
Environment