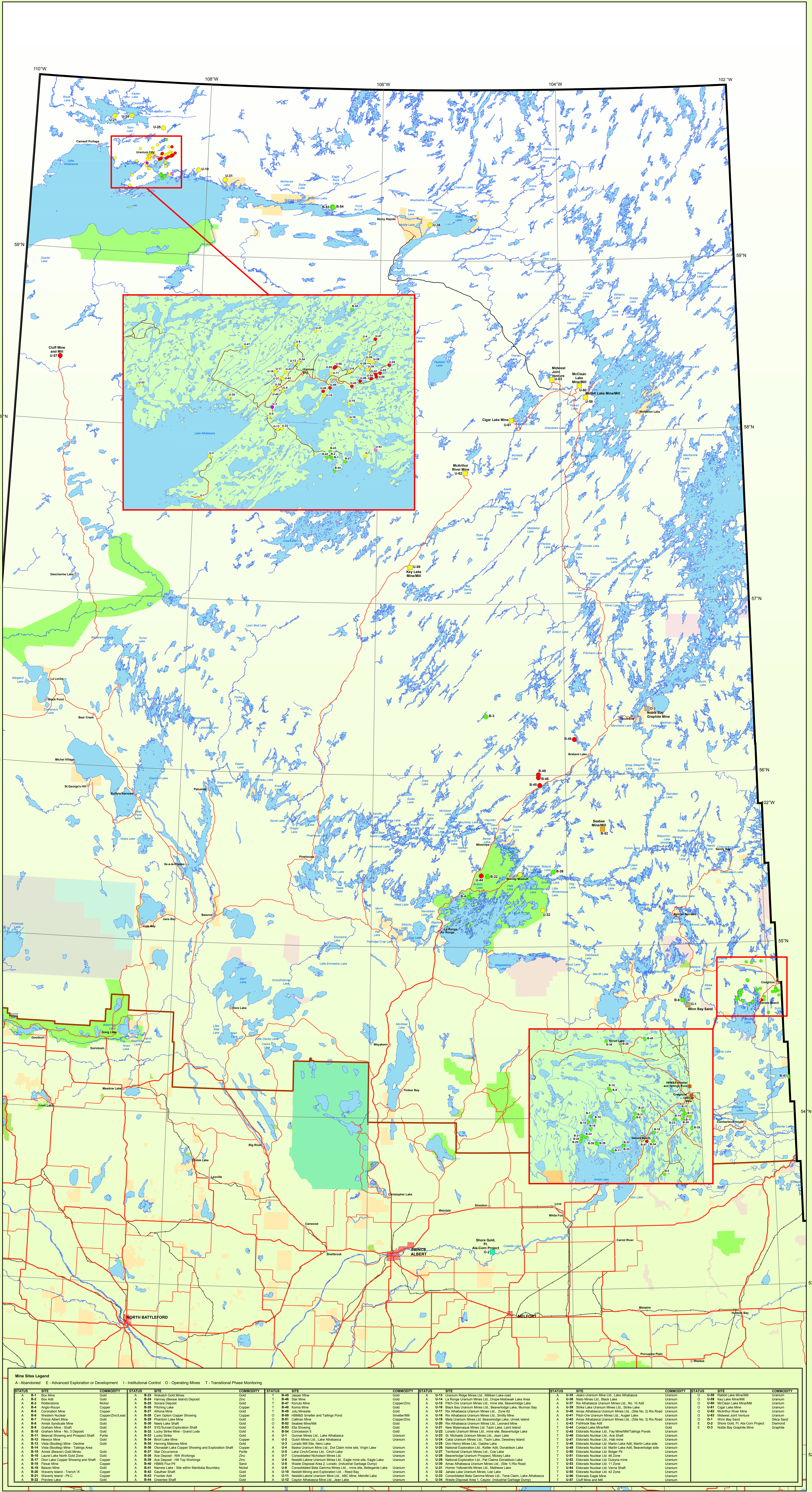


# SASKATCHEWAN URANIUM AND HARD ROCK MINE SITES



**Purpose:** To illustrate Mine Sites monitored by Saskatchewan Environment's, Environmental Protection Branch, Industrial, Uranium and Hardrock Unit in Prince Albert.

**Note:** O-3 Noble Bay Graphite Mine is monitored by Indian and Northern Affairs Canada (INAC).

**Data Sources:** Mine Site data provided by Environmental Protection Branch, Protected Areas and Crown Land Data based on results of Designated Areas Project. Highways and Railroads based on Saskatchewan Road Network Data. Base data from National Topographic Series 1:50,000 scale.

**Datum:** North American Datum 1983 (NAD83) (CSRS98)  
**Projection:** Universal Transverse Mercator, Extended Zone 13  
**Created by:** Geomatics Services Section - November 20, 2006  
**Copyright © 2006** Government of Saskatchewan. All Rights Reserved.

**Internal Department Direction**  
 Any proposal to do work or permit land use near or on any mine sites or mining reclamation areas must be submitted to Saskatchewan Environment's, Environmental Protection Branch, Industrial, Uranium and Hardrock Unit in Prince Albert for review. This is to ensure that any work done or land use permitted is compatible with the site and does not disturb any reclamation work that has been done.

**Operating Mine Sites**  
 Copper/Zinc  
 Diamond  
 Gold  
 Graphite  
 Silica Sand  
 Uranium

**Non-operating Mine Sites**  
 No Status  
 Abandoned Non-Uranium Sites  
 Abandoned Uranium Sites  
 Institutional Control  
 Transitional Phase Monitoring

**Community**  
 Indian Reserve  
 Air Weapons Range  
 Ecological Reserves  
 Representative Area Network  
 National Park  
 Provincial Park  
 Recreation Site  
 Historic Site

**Map Features:**  
 Northern Administrative District Line  
 Primary Highway  
 Secondary Highway  
 Road  
 Railroad  
 Lake

**Scale:** 0 10 20 30 40 50 60 70 Kilometers