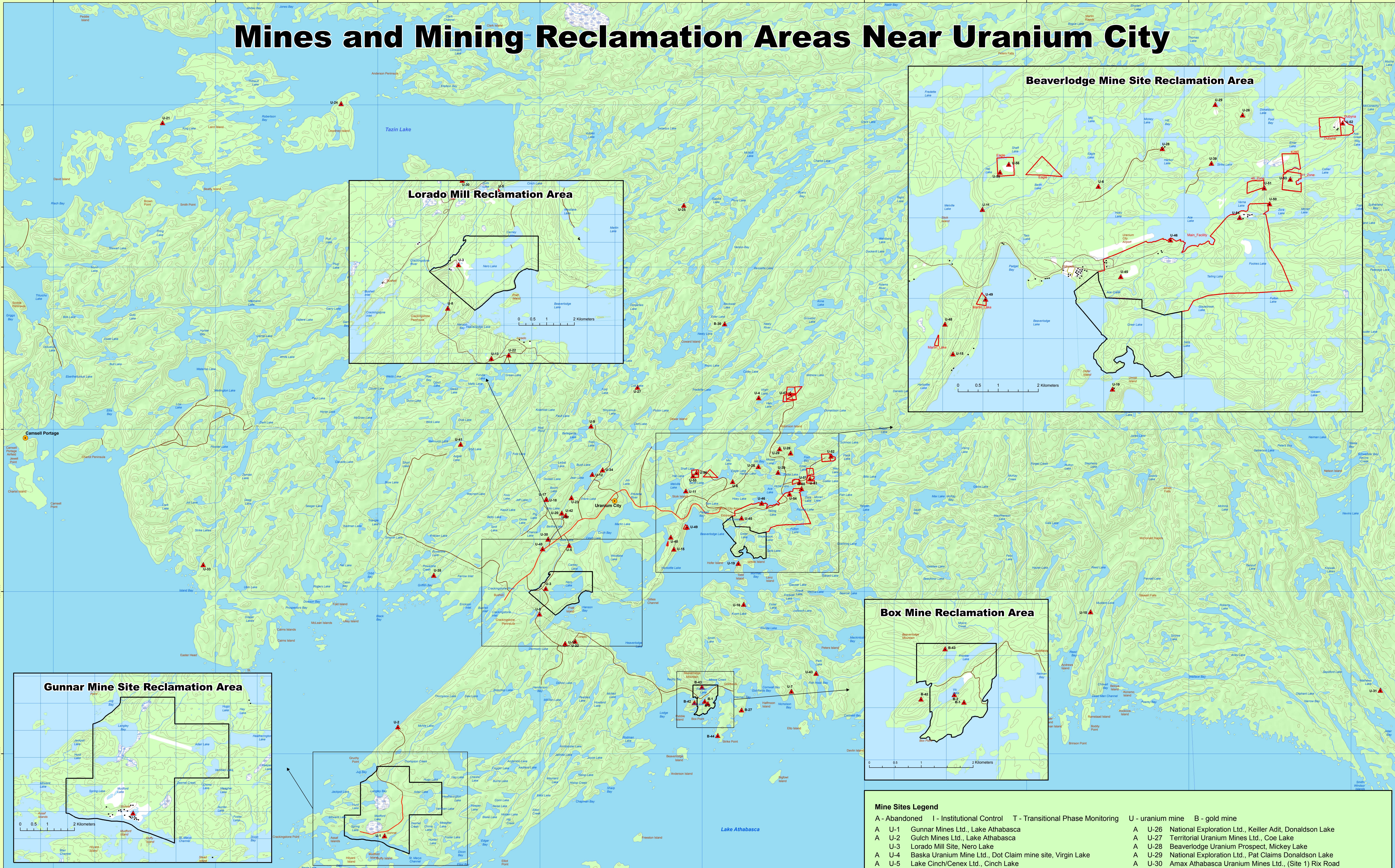
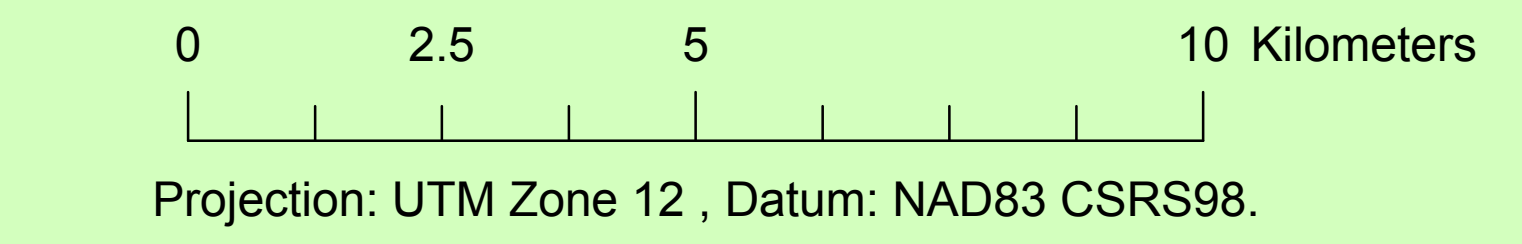
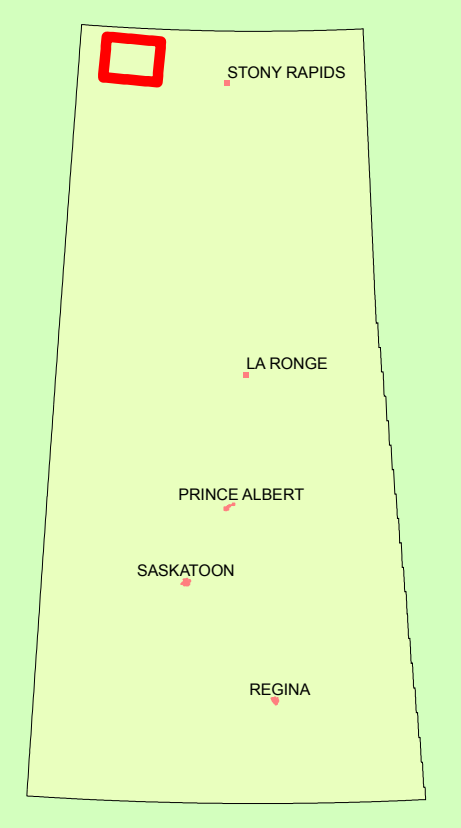


Mines and Mining Reclamation Areas Near Uranium City



SE Mining Reclamation Areas and Mine Site datasets provided by Environmental Protection Branch.
 Cameco's Surface Leases dataset provided by Cameco Corporation.
 Base map represented by 1:50K and 1:250K National Topographic Series data.

Internal Department Direction
 Any proposal to do work or permit land use near or on any mine sites or mining reclamation areas must be submitted to Saskatchewan Environments, Environmental Protection Branch, Industrial, Uranium and Hardrock Unit in Prince Albert for review. This is to ensure that any work done or land use permitted is compatible with the site and does not disturb any reclamation work that has been done or is planned.



This map is for graphic representation only and not intended for navigation or legal purposes.
 Map created by Saskatchewan Environment (SE), Geomatics Services Section, November 15, 2006.
 Copyright © 2006 Government of Saskatchewan. All Rights Reserved.

***Note:** Cameco's Surface Leases are with Saskatchewan Environment and cover the former Eldorado Nuclear Ltd. mine sites that have been reclaimed and are in transitional phase monitoring. Cameco also holds a Canadian Nuclear Safety Commission (CNSC) license on these same lease sites.

Legend	
	Mine Sites
	Community
	Utility
	Trail
	Road
	Contour
	River
	SE Mining Reclamation Areas
	Cameco's Surface Leases *see note
	Developed
	Vegetation
	Lake
	Wetland

Mine Sites Legend				
A - Abandoned	I - Institutional Control	T - Transitional Phase Monitoring	U - uranium mine	B - gold mine
A U-1			A U-26	National Exploration Ltd., Keiller Adit, Donaldson Lake
A U-2			A U-27	Territorial Uranium Mines Ltd., Coe Lake
U-3			A U-28	Beaverlodge Uranium Prospect, Mickey Lake
A U-4			A U-29	National Exploration Ltd., Pat Claims Donaldson Lake
A U-5			A U-30	Amax Athabasca Uranium Mines Ltd., (Site 1) Rix Road
A U-7			A U-31	Homer Yellowknife Mines Ltd., Mathews Lake
A U-6			A U-32	Consolidated Beta Gamma Mines Ltd., Tena Claim, Lake Athabasca
A U-8			A U-34	Waste Disposal Area 2, Lorado. (Industrial Garbage Dump)
A U-9			A U-35	Jesko Uranium Mine Ltd., Lake Athabasca
A U-10			A U-37	Rix Athabasca Uranium Mines Ltd., No. 10 Adit
A U-11			A U-39	Strike Lake Uranium Mines Ltd., Strike Lake
A U-12			A U-40	Amax Athabasca Uranium Mines Ltd., (Site No. 2) Rix Road
A U-13			A U-41	Pitch-Ore Uranium Mines Ltd., Augier Lake
A U-15			A U-42	Amax Athabasca Uranium Mines Ltd., (Site No. 3) Rix Road
A U-16			I U-43	Fishhook Bay Adit
A U-17			T U-56	Eldorado Eagle Mine
A U-18			A B-1	Box Mine
A U-19			A B-2	Box Adit
A U-20			A B-27	Athona Mine
A U-21			A B-30	Neely Lake Shaft
A U-22			A B-42	Gauthier Shaft
A U-23			A B-43	Frontier Adit
A U-24			A B-44	Greenlee Shaft
A U-25				