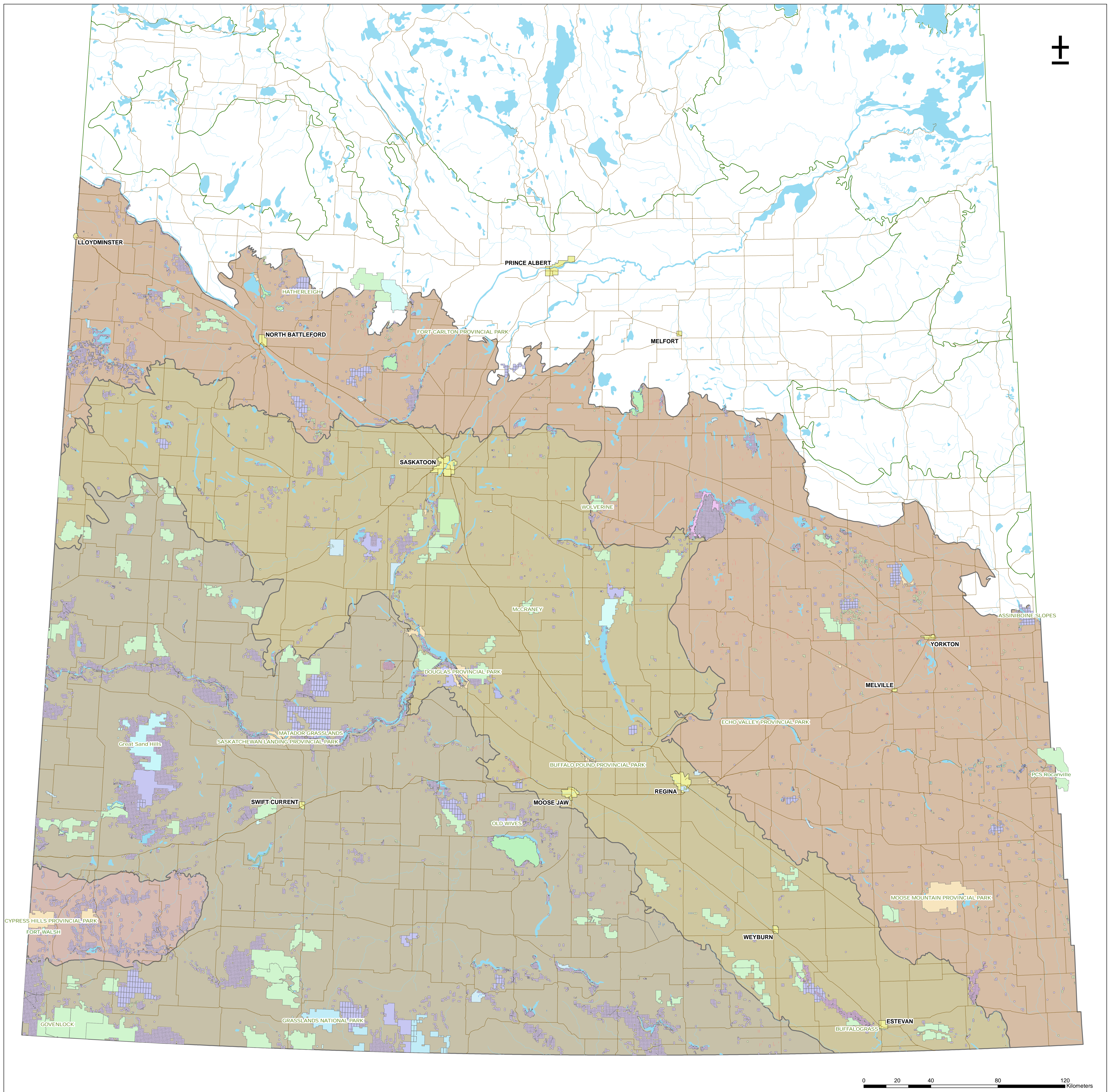


Saskatchewan Representative Areas Network Within Prairie Ecozone



- Highway
- River
- Waterbody
- City
- Prairie Ecozone**
- Prairie Ecoregion**
- Aspen Parkland
- Cypress Upland
- Mixed Grassland
- Moist Mixed Grassland
- Remaining Ecoregions

- Ducks Unlimited lands
- Conservation Easement
- Provincial Community Pasture
- PCS Rocanville
- CFB Dundurn
- SWA Lands
- National Wildlife Area
- Park Land
- Migratory Bird Sanctuary
- Wildlife Refuge
- National Park
- RA Ecological Reserve
- Ecological Reserve
- FWD Fund Lands
- PFRA Community Pasture
- Game Preserve
- WHPA

Representative Areas Network Within Prairie Ecozone			
Representative Area	Number	Area (ha)	Total %
Provincial Administration			
SAFRR			
Provincial Community Pasture	28	239246.54	10%
WHPA Land	22777	1102090.79	45%
SE			
Ecological Reserve	4	850.8	less than 1%
FWD Fund Land	1070	45121.99	2%
Game Preserve	43	26793.82	1%
Park Land	62	83668.47	3%
RA Ecological Reserve	1	37343.45	2%
Special Management Area	0	0	0%
Wildlife Refuge	24	2937.2	less than 1%
SWA Land	699	34405.04	1%
Federal Administration			
CFB Dundurn	1	21537.69	1%
Migratory Bird Sanctuary	14	56432.05	2%
National Park	1	48822.11	1%
National Wildlife Area	38	36470.98	2%
PFRA Community Pasture	169	707003.67	29%
Corporate			
PCS Rocanville	1	1495.8	less than 1%
NON-Gov Organizations			
Ducks Unlimited Land	1080	NA	
Private Land			
Conservation Easement	207	NA	
TOTAL RAN Land within PE	26219	2444220.4	

- Climate Change Study Sites**
- Grasslands National Park
 - Fort Walsh Nat Hist Site
 - Moose Mountain Nat Env
 - Douglas Nat Env
 - Sask Landing Nat Env
 - Cypress Hills Nat Env
 - Echo Valley Prov Park
 - Buffalo Pound Prov Park
 - Fort Carleton Prov Hist
 - Matador Grasslands Prot Area
 - Assiniboine Slopes Eco Reserve
 - Buffalo Grass Eco Reserve
 - Great Sand Hills Eco Reserve
 - Hatherleigh Prov Past
 - Old Wives Prov Past
 - Wolverine PFRA Past
 - McCraney PFRA Past
 - Govenlock PFRA Past
 - PCS Rocanville

Projection: Universal Transverse Mercator
 Datum: North American Datum (NAD83 CSRS98)
 Spheroid: GRS 1980
 Scale: 1:800 000
 Date: November 23, 2005
 Branch: Geomatics Services Section
 Saskatchewan Environment

Source Data:
 rhorac1 and rhorac2
 Rochelle Joerissen (Ducks Unlimited data)

Map created by:
 John Vandall

Created by:
 Darren Chapman
 GIS Analyst



**Saskatchewan
Environment**