

# Manitoba Floodway Expansion Authority

*More capacity. More opportunities.* - APRIL 2004

## Message from the CEO

Since its completion in 1968, the Red River floodway has saved Manitobans more than \$8 billion in flood damage. During the 1997 Flood of the Century the capacity of the floodway was pushed to its limits. To better protect southern Manitoba residents, into the next century, we need to expand the Red River Floodway. Since 1997, the Canadian and Manitoba governments have invested \$130 million in flood protection measures - \$110 million for rural residents in the Red River Basin.

Over the past year, they committed an additional \$240 million to begin the expansion – more than one-third of the total project costs.

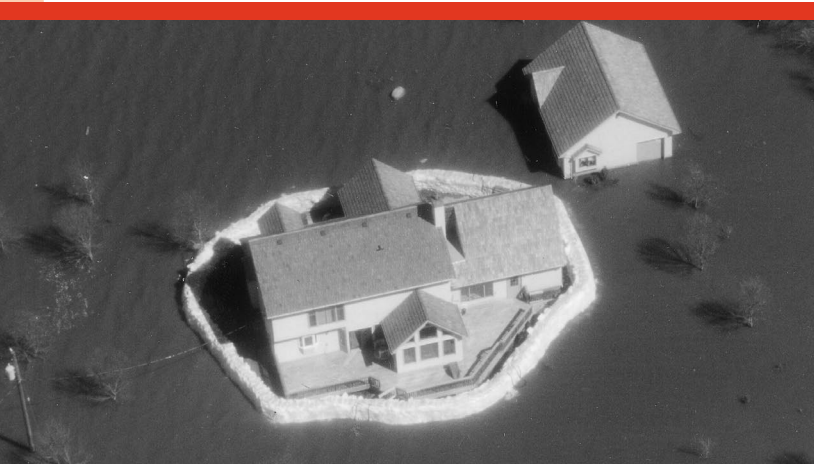
The floodway expansion will dramatically improve the quality of life for Manitobans. It will make residents more secure, protect the environment, create jobs & economic growth as well as establish a model for community involvement.

We want our public consultation process to be inclusive, innovative and informative. You have an opportunity to help shape the future of your community for generations to come. Included in this package you will find more information about the project as well as our consultation plan. We have also established a toll-free access line for rural residents at 1-866-356-6355.

As chief executive officer of the Manitoba Floodway Expansion Authority, I want to assure all Manitobans that I am committed to completing the floodway project before the next big flood hits. We look forward to working with you in the months and years ahead.



Ernie Gilroy  
CEO



### Manitoba Floodway Expansion Authority

200 – 155 Carlton Street  
Winnipeg MB  
R3C 3H8  
204-945-4900  
Toll-free: 1-866-356-6355  
[www.floodwayauthority.mb.ca](http://www.floodwayauthority.mb.ca)

## The Floodway Authority Act

In March 2004, the Province introduced *The Floodway Authority Act*. This historic piece of legislation outlines the responsibilities of the Manitoba Floodway Expansion Authority, a separate, independent, publicly accountable agency to manage the expansion and maintenance of the floodway. As the government's agent, the authority will own the floodway's physical assets, manage the design, construction and maintenance of the expansion and develop the economic possibilities that result from the project.

A copy of the proposed legislation is available at  
[www.floodwayauthority.mb.ca](http://www.floodwayauthority.mb.ca) or  
call 1-866-356-6355 toll-free.

## Environmental Impact Assessment

In order to identify potential environmental effects related to this project, the authority has commissioned an independent, environmental impact assessment of the project, consistent with federal and provincial legislation requirements. The assessment will be completed before the construction on the expansion begins.

This independent process is intended to provide early opportunities for citizens to receive information and provide their views about potential project effects, measures to mitigate those effects and various other requirements associated with the project.

Public involvement is a critical element of the environmental assessment process. The first of three rounds in this process began in January and was just completed. A second round of more detailed discussions will take place before summer, with the third round commencing before the end of the year. More information is available at [www.floodwayeia.com](http://www.floodwayeia.com).

Once the environmental impact assessment is completed, it will be made available to the public and reviewed by federal & provincial agencies. The Manitoba Clean Environment Commission will then conduct public hearings on the environmental implications of the project.

### Floodway Facts

- The new floodway will be able to handle close to 50 per cent more water flow than the existing floodway.
- More than 30 million cubic metres of earth will be excavated to construct the new floodway.
- The current floodway was built at a cost of \$63 million between 1962 and 1968 and has saved the province more than \$8 billion in flood losses.
- In its 35 years of operation, the floodway gates have been operated 19 times to control water levels.
- The floodway is 46-kilometres long.
- The Trans Canada Highway and both national railways cross the floodway.
- Winnipeg's water supply and many of Manitoba Hydro's transmission lines cross the floodway.
- The largest flood in the recorded history of Manitoba took place in 1826. It was 40 per cent larger than the 1997 flood.
- Since the 1997 flood, the Canadian and Manitoba governments have invested in \$130 million in flood protection measures – \$110 million for rural residents in the Red River Basin.
- Communities that have benefited from this fund include: Grande Pointe, Niverville, St.-Pierre Jolys, Gretna, Rosenort, Aubigny, Lowe Farm, Riverside, Emerson, Rosenfeld, Ste. Agathe, Roseau River, Letellier, Morris, St. Adolphe and Brunkild.
- Over the past year the Canadian and Manitoba governments committed an additional \$240 million – more than one third of the cost – for the Floodway Expansion project.

## Recreation and economic opportunities

**A**s one of the largest capital projects in Manitoba history, the expansion of the Red River Floodway has the potential to create recreation and economic opportunities for municipalities, individuals, organizations and businesses.

On March 18, the authority issued a call for expressions of interest to Manitobans to further explore these opportunities. Submissions will be accepted until April 20, 2004. Examples of potential opportunities include:

- hiking, jogging and bike trails
- research and innovation partnerships
- youth employment and job training initiatives
- tobogganing, snowboarding and snowmobiling
- horseback riding, hang gliding and dirt biking
- tourism promotion
- Nordic and downhill skiing
- cultural and historic initiatives
- Aboriginal and Metis business development
- environmental technologies & sustainable development

Initiatives that compete for water with the Red River or require new project engineering costs will not be considered.



## Employment and job training

**T**he floodway expansion will create thousands of direct and spin-off jobs for Manitobans. It will also present an opportunity to develop significant training opportunities for local residents.

To ensure labour peace during the life of the project, the authority will establish a single labour agreement to govern the project.

Managing one labour agreement that guarantees cost certainty is a good deal for taxpayers. The alternative is juggling dozens of varied labour agreements and the expensive risk of labour uncertainty.

Project labour agreements are common on many large scale infrastructure projects in Manitoba and Canada. They have a history of helping conclude large, lengthy projects on time and on budget.

In addition to orderly, efficient and effective completion of work, the authority also plans to establish local hiring provisions, a comprehensive employment training program, workplace safety measures and increased productivity.

The authority is facilitating a consultation process with stakeholders to examine:

- the size of contracts to be let for floodway construction
- job training partnerships
- framework for project labour agreement

## Mitigation

To make the situation or effect be less severe or intense

The authority has a mandate to help mitigate effects of the Floodway Expansion project wherever possible. One of the goals of the current independent environmental impact assessment and our ongoing consultation, is to identify potential effects and recommend specific mitigation measures. Wherever possible, the authority will work toward engineering solutions to these challenges.

Examples of potential affects and possible mitigation solutions could include:

Deepening the floodway in a particular location may affect local well water quality and supply.

Possible mitigation solutions:

- widen the floodway in that location instead of deepening it
- lower the pump in the well
- drill a new well

Replacing bridges across the floodway may cause traffic disruption.

Possible mitigation solutions:

- stage construction projects

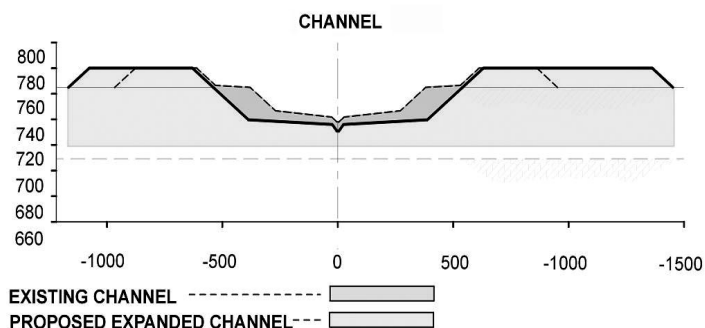
- construct temporary detours
- use existing bridge until the new bridge is complete

Increased water flows through an expanded floodway channel outlet may have the potential to increase riverbank erosion.

Possible mitigation solutions:

- design outlet control structure in a way that reduces water speed
- strengthen riverbanks by using rip rap or other materials
- design flood channel in a way that helps reduce speed of water flows

### PRE-DESIGN PROCESS



#### • Channel Enlargement

- Combination of widening and deepening

## Water levels

Each flood has an associated water level that peaks at different locations along the Red River Basin. The expanded floodway will:

- protect us from water levels even higher than those in 1997
- provide almost double the water capacity of the current channel, from 2,550 cubic metres (90,000 cubic feet) of water per second to 4,000 cubic metres (140,000 cubic feet) per second

*The current floodway will be widened and deepened at various locations. This will increase the floodway's current capacity by 40 per cent.*



## Floodway operating rules

Normally, the gates that divert water into the floodway channel sit below the river bottom. With spring melt and rain, the Red River rises and the flood gates can then be raised slowly to divert more water into the channel. There are detailed operating rules for the way the gates are raised and the floodway is put into action. They were updated following the 1997 flood.

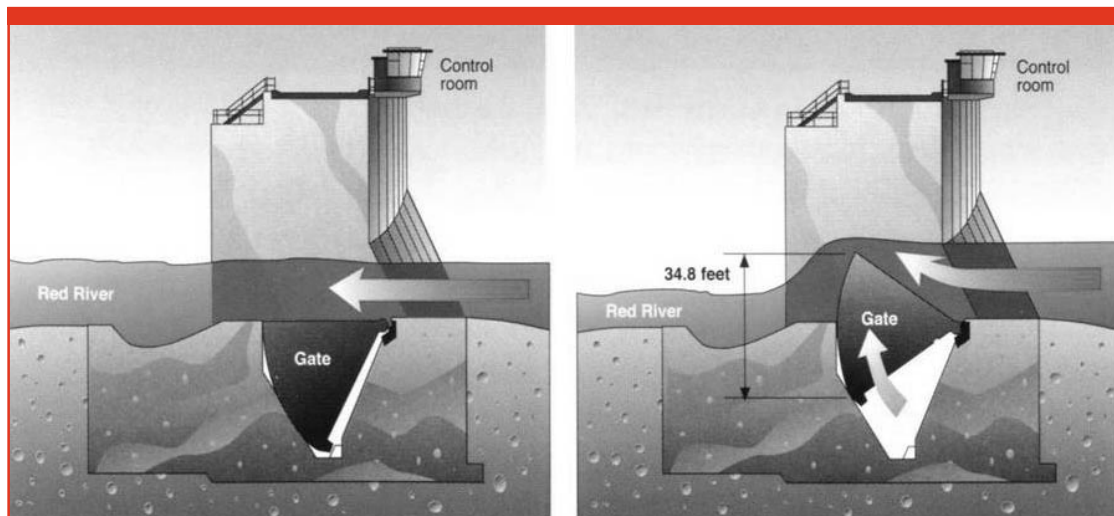
The provincial government will continue to be responsible for the operation of the floodway after the expansion is complete.

The authority will work closely with the province and provide public feedback on the current operating rules.

## Summer operation

The floodway has only been operated once in the summer. In June, 2002 the decision was made to raise the gates when the river exceeded normal summer water levels and significant rainstorms were predicted. This was done to reduce a significant risk of major basement flooding in the City of Winnipeg.

The province is currently reviewing the summer operating rules. The results of the review will be available prior to the completion of the project's environmental impact assessment. Regardless of that review, and failing an emergency, the floodway will not operate in the summer during the project's 2005 - 2009 construction phase.



*Improvements to the floodway inlet control structure are a key component to the floodway expansion project.*

## Public consultation on the floodway expansion

While sponsoring the environmental impact assessment, the authority will also lead a consultation process associated with the floodway expansion. This process will consist of:

- a series of public open houses
- round table meetings with stakeholders
- presentations to municipal officials

For example, in April and May the authority will travel to a dozen rural municipalities, towns and cities to meet with the local municipal officials of Ritchot, West St. Paul, Tache, Springfield, Morris, St. Clements, St. Andrews, McDonald, East St. Paul, Niverville, Selkirk and Winnipeg.



*Floodway representatives listen to local residents at a recent public meeting.*

The result of the consultations will be reported to the federal and provincial governments as well as the independent environmental assessment team.

You are invited to attend the public open house series. We want your ideas to help shape the future of your community.

### MANITOBA FLOODWAY EXPANSION AUTHORITY - OPEN HOUSE SERIES

Monday, April 19	Oakbank, Baptist Church	Monday, April 26	Morris, Southern Manitoba Convention Centre
Tuesday, April 20	East Selkirk, Recreation Centre	Thursday, April 29	Winnipeg, St. Norbert Community Centre
Wednesday, April 21	St. Norbert, Howden Community Centre	Monday, May 3	Winnipeg, Vince Leah Recreation Centre

**These events will run from 5:00 p.m. to 9:00 p.m. at each location.**

## Red River Floodway Act

**Flood protection rather than flood compensation is always the primary goal in an emergency.**

Compensation for artificial flooding is a major concern for residents of the Red River Basin. In March, 2004, the province introduced *The Red River Floodway Act* to help us address this issue. It allows those who suffer property damage and/or economic loss from artificial spring flooding on the Red River to claim compensation, including individuals, farms, businesses, non-profit organizations and local authorities. This compensation is in addition to the assistance available under other government flood protection and damage programs.

The compensation program will:

- cover a much broader range of damage and loss, with the goal of restoring claimants to their pre-flood financial position

- have no claim limit and no deductible
- be assessed on proof of loss rather than proof of repair or replacement, providing better response times
- establish improved appeal procedures

Manitoba Emergency Measures Organization will administer the new compensation program, providing claimants with a single claim procedure.

Once the floodway expansion is completed, the need for artificial flooding should be minimal.

A copy of the proposed legislation is available at [www.floodwayauthority.mb.ca](http://www.floodwayauthority.mb.ca) or call 1-866-356-6355 toll-free.