

Northwest Territories
Highway Traffic, 2006



Northwest Territories
Highway Traffic, 2006

Department of Transportation
Government of the Northwest Territories
August 2007

Acknowledgements

This report was prepared by the Planning and Policy Division of the Department of Transportation, Government of the Northwest Territories, in co-operation with the Highways and Marine Division and the Road Licensing & Safety Division.

If you have any comments or questions related to the content of this report, please contact the Planning and Policy Division by telephone at (867) 873-7666, or by facsimile at (867) 920-2565.

Table of Contents

Table of Contents	Page i
List of Figures	Page ii
List of Tables	Page iii
1.0 Summary of Traffic Data Collection Activities and Analysis	Page 1
1.1 Background	Page 1
1.2 Traffic Data Collection System	Page 1
1.3 Traffic Data Processing	Page 5
1.4 Glossary of Terms	Page 5
1.5 Layout of the Report	Page 6
2.0 Highway Traffic Volume Data	Page 7
3.0 Vehicle Movements at Ferries and Weigh Scales	Page 21
Appendix A Historical Data	
Appendix B Data Processing Methodology	

List of Figures

Figure 1	Northwest Territories Permanent and Seasonal Counter Locations (2006)	Page 2
Figure 2	2006 AADT at Permanent Counters	Page 7
Figure 3	2006 AADT on Highway Segments	Page 8
Figure 4	Vehicle Kilometres Travelled on Northwest Territories Highways	Page 16
Figure 5	Yearly Trend in Road Related Indicators	Page 17
Figure 6	Distribution of Monthly Traffic	Page 18
Figure 7	Distribution of Daily Traffic	Page 19
Figure 8	Distribution of Hourly Traffic	Page 20
Figure 9	Average Daily Traffic on Highway Ferries	Page 21
Figure 10	Commercial Vehicles Weighed at the Enterprise Weigh Scale	Page 29
Figure 11	Commercial Vehicle Activity at the Enterprise Weigh Scale	Page 30
Figure 12	Commercial Vehicle Activity at the Inuvik Weigh Scale	Page 31
Figure 13	Commercial Vehicle Activity at the Fort Liard Weigh Scale	Page 32
Figure 14	Vehicle Classifications	Page 33

List of Tables

Table 1	Highway System Classification (2006)	Page 3
Table 2	Permanent and Seasonal Counter Locations	Page 4
Table 3	Estimated Traffic on Northwest Territories Highways	Page 9
Table 4	Traffic on Northwest Territories Access Roads (sorted by counter)	Page 10
Table 5	Monthly Average Daily Traffic on Northwest Territories Winter Roads (sorted by counter)	Page 12
Table 6	Opening and Closing Dates for Winter Roads & Ice Bridges	Page 13
Table 7	Truck Traffic on Selected Winter Mining Roads	Page 14
Table 8	Estimated Vehicle Kilometres Travelled on Northwest Territories Highways	Page 15
Table 9	Average Daily Traffic on Highway Ferries	Page 22
Table 10	Vehicle Classification Data at Dory Point Ferry (M.V. Merv Hardie)	Page 23
Table 11	Vehicle Classification Data at Liard River Ferry (M.V. Lafferty)	Page 24
Table 12	Vehicle Classification Data at Mackenzie River Ferry (M.V. Louis Cardinal)	Page 25
Table 13	Vehicle Classification Data at Peel River Ferry (C.F. Abraham Francis)	Page 26
Table 14	Vehicle Classification Data at Mackenzie River Ferry (M.V. Johnny Berens)	Page 27
Table 15	Vehicle Classification at the Enterprise Weigh Scale	Page 28

1.0 Summary of Traffic Data Collection Activities and Analysis

1.1 Background

The Northwest Territories highway network consists of 2200 kilometres of all-weather roads and 1400 kilometres of winter roads. The highway system also includes five vehicle ferries. A map of the highway network is provided in Figure 1. A detailed listing of the highway system classification by surface type is provided in Table 1. It is noted that, in addition to the above, there are a number of winter roads constructed by mining companies to facilitate mine resupply.

The Department of Transportation of the Government of the Northwest Territories is responsible for operation and maintenance, capital rehabilitation, and upgrading of the Northwest Territories highway network. To monitor traffic utilizing the highway system, the Department of Transportation operates a series of mechanical counters and conducts periodic visual counts and surveys. Supplementing this information is data from the weigh scales and usage logs from the five ferries. Information obtained is used by the department to monitor changes in traffic flows, classify highways, set priorities in maintenance and capital funding, monitor safety aspects of the highways and optimize engineering designs. Traffic data is also used by businesses and the general public as the need arises.

This report presents traffic data collected by the Department of Transportation on the territorial highway network from 1993 to 2006. This report includes traffic information collected on major highways, access roads, winter roads and associated ferry crossings. The report also contains information on vehicle classifications.

1.2 Traffic Data Collection System

The Northwest Territories' Department of Transportation collects traffic at a number of permanent and seasonal counting stations as shown in Table 2 and illustrated in Figure 1. These stations provide hourly information on traffic for the complete year, or selected portions of the year for counters located on winter roads or other seasonal access roads. These stations are positioned to capture the general flow of traffic on the highway network.

Vehicle classification information is collected at the five ferries that operate on the highway system. The Marine Services Division of the Department of Transportation is responsible for collecting and processing this information.

Special turning movement counts at select intersections and visual vehicle classification counts are also conducted annually or as need arises. No manual counts were undertaken in 2006.

Information on truck volumes and commodities is obtained from the weigh scale in Enterprise. Truck volumes utilizing private (mining) winter roads is also collected and presented in this report.

In 2006, less than 50 percent of all potential data was useable for determining traffic volumes. This performance is attributed to the age of the traffic counters, breakdown of the loops and malfunctioning data modules, but represents a significant improvement since 2004. Where data was missing, traffic volumes have been estimated, based on previous years' data and information from other sources such as vehicle movements at ferries and weigh scales. The Department is working to improve data collection activities, including the purchase of new counters and loops and the installation of temporary counters.

Figure 1
Northwest Territories Permanent
and Seasonal Traffic Counter
Locations (2006)

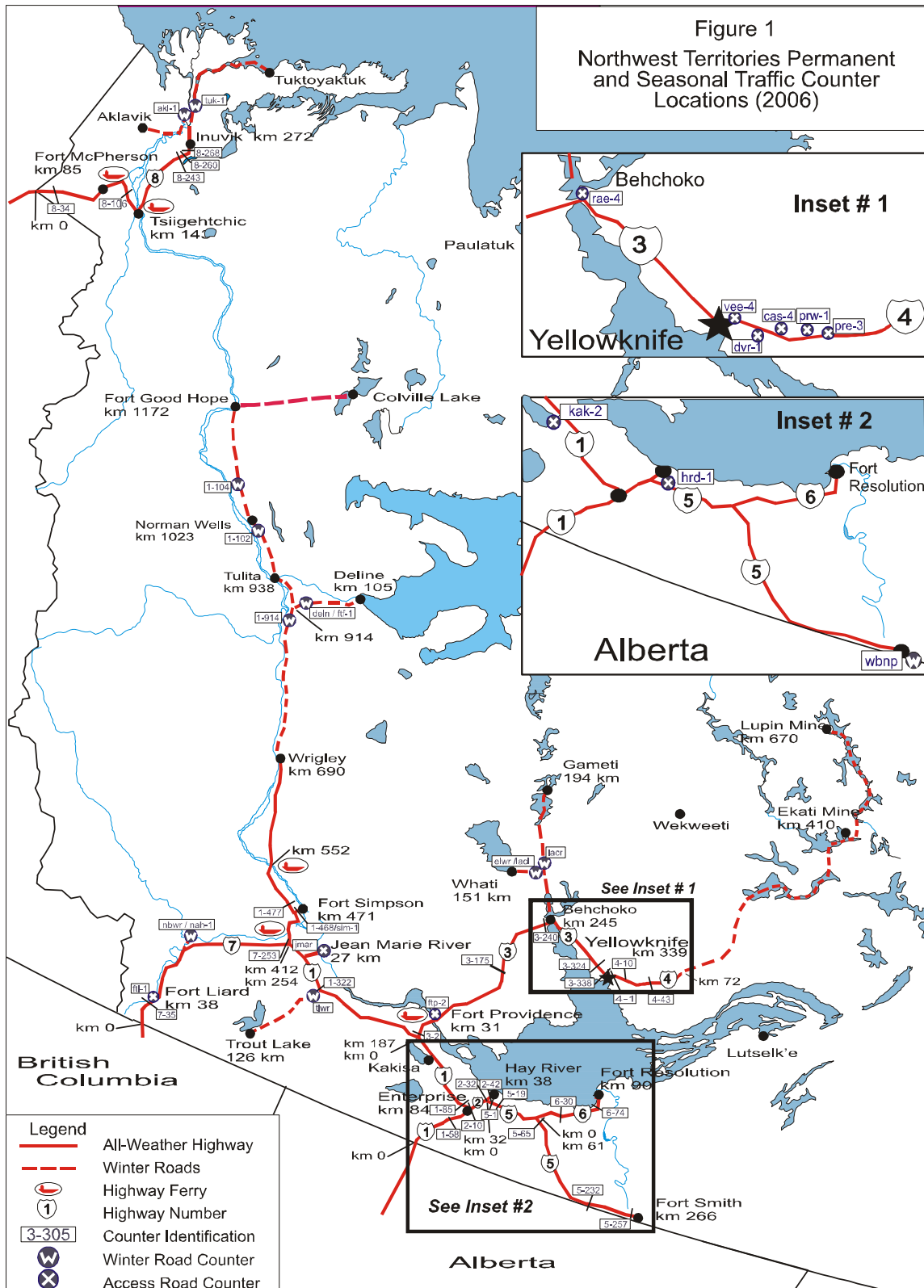


Table 1 Highway System Classification (2006)

Classification	Length (kilometres)					Total
	Paved	Dust- Controlled Gravel	Untreated Gravel	Ferry Crossing	Winter Road	
All-Weather Highways						
Highway 1 (Mackenzie Highway to Wrigley)	249.2	242.8	195.5	2.5	-	690.0
Highway 2 (Hay River Highway)	43.7	-	-	-	-	43.7
Highway 3 (Yellowknife Highway)	337.6	-	-	1.2	-	338.8
Highway 4 (Ingraham Trail)	28.3	40.9	-	-	-	69.2
Highway 5 (Fort Smith Highway)	158.5	108.5	-	-	-	267.0
Highway 6 (Fort Resolution Highway)	36.0	26.0	28.0	-	-	90.0
Highway 7 (Liard Highway)	-	73.2	180.9	-	-	254.1
Highway 8 (Dempster Highway)	10.3	67.2	195.0	-	-	272.5
Total	863.6	558.6	599.4	3.7	0.0	2,025.3
Access Roads						
Kakisa Lake Access	12.9	-	-	-	-	12.9
Fort Simpson Access	3.4	-	-	-	-	3.4
Jean Marie River Access	-	-	27.4	-	-	27.4
Fort Providence Access	5.4	-	-	-	-	5.4
Rae Access	10.5	-	-	-	-	10.5
Dettah Access	11.3	-	-	-	-	11.3
Hay River Reserve Access	2.4	11.8	-	-	-	14.2
Fort Liard Access	1.3	-	4.0	-	-	5.3
Hay River Hwy. No. 2 Km 43.7 - 48.6	4.9	-	-	-	-	4.9
Yellowknife Access	1.7	-	-	-	-	1.7
Fort McPherson Access	-	1.1	-	-	-	1.1
Inuvik Access	0.6	-	-	-	-	0.6
Hwy 3 Ice Crossing Access	-	9.4	-	-	-	9.4
Miscellaneous Minor Access	3.2	8.5	45.2	-	-	56.9
Total	57.6	30.8	76.6	0.0	0.0	165.0
Winter Roads						
Highway 1 (Mackenzie Highway, Wrigley to FGH)	-	-	-	-	486.4	486.4
Colville Lake Access (opened March 2001)	-	-	-	-	165.0	165.0
Highway 3 Ice Crossing	-	-	-	-	3.1	3.1
Trout Lake Access	-	-	-	-	126.0	126.0
Deline Access	-	-	-	-	105.3	105.3
Wha'ti Road	-	-	-	-	103.0	103.0
Rae Lake Road	-	-	-	-	125.0	125.0
Nahanni Butte Access	-	-	9.0	-	13.3	22.3
Tuktoyaktuk Access	-	-	-	-	184.0	184.0
Aklavik Access	-	-	-	-	85.0	85.0
Dettah Access	-	-	-	-	6.3	6.3
Total	0.0	0.0	9.0	0.0	1,402.4	1,411.4
Total All-Weather Roads						2,189.3
Total Winter Roads (Department of Transportation)						1,411.4

Table 2 Permanent and Seasonal Counter Locations

Counter ID	Location (Hwy / Road)	Kilometre	Description
All-Weather Highways			
1-58	Highway 1	58	15 km south of Alexandra Falls
1-85	Highway 1	85	1.2 km west of Enterprise
1-322	Highway 1	322	0.4 km west of Trout Lake winter road
1-477	Highway 1	477	5.2 km west of Fort Simpson Access on Highway 1
2-10	Highway 2	10	10 km north of Enterprise, south of Paradise Gardens
2-32	Highway 2	32	40 metres north of Highway 2 and 5 intersection, south of service road
2-42	Highway 2	42	North of West Channel, across bridge
3-2	Highway 3	2	2 km north of Highway 1 and 3 intersection, south of ferry landing
3-175	Highway 3	175	53 km north of Chan Lake, 62 km south of Edzo
3-240	Highway 3	240	3 km south of Rae Access, north of Edzo
3-324	Highway 3	324	19.3 km east of Boundry Creek
3-338	Highway 3	338	0.8 km west of Highway 3 and 4 intersection
4-1	Highway 4	1	1 km north of Highway 3 and 4 intersection
4-10	Highway 4	10	2.5 km east of Yellowknife River Bridge / 300 m west of Dettah Access Road
4-43	Highway 4	43	11 km east of Prelude Lake East Access, 12 km west of Cameron River
5-1	Highway 5	1	1 km east of Highway 2 and 5, 1.5 km west of Hay River Reserve Access
5-19	Highway 5	19	10.6 km east of Sandy Creek, 19 km east of Highway 2 and 5 intersection
5-65	Highway 5	65	5 km south of Highway 5 and 6 intersection
5-232	Highway 5	232	12.3 km west of Salt River Village Access
5-257	Highway 5	257	6.1 km west of Fort Smith
6-30	Highway 6	30	8.5 km east of Pine Point Access
6-74	Highway 6	74	16 km west of Fort Resolution
7-35	Highway 7	35	2.6 km south of Fort Liard
7-253	Highway 7	253	0.3 km south of Highway 1 and 7 intersection
8-34	Highway 8	34	10 km west of Midway Lake
8-106	Highway 8	106	20.6 km north of Fort McPherson Access
8-243	Highway 8	243	1 km south of Cabin Creek
8-260	Highway 8	260	0.7 km north of airport access
8-268	Highway 8	268	1.3 km south of Inuvik
Access Roads			
cas-4	Cassidy Point	1	1 km north of junction with Highway 4
dvr-1	Dettah	1	1 km south of junction with Highway 4
ftl-1	Fort Liard	1	1 km west of junction with Highway 7
ftp-2	Fort Providence	2	2 km west of junction with Highway 3
hrd-1	Hay River Dene Reserve	1	1 km north of junction with Highway 5
jmar	Jean Marie River	1	1 km north of junction with Highway 1
kak-2	Kakisa	2	2 km south of junction with Highway 1
pre-3	Prelude East	1	1 km north of junction with Highway 4
prw-1	Prelude West	1	1 km north of junction with Highway 4
rae-4	Fort Rae	4.2	4.2 km north of junction with Highway 3
vee-4	Vee Lake	4.3	4 km north of junction with Highway 4
sim-1	Fort Simpson	1	1 km north of junction with Highway 1
Winter Roads			
1-914	Highway 1	914	northern-most side of junction of Highway 1 and Deline Access
1-102	Highway 1	1022	1.4 km south of Norman Wells
1-104	Highway 1	1031	7.6 km north of Norman Wells
akl-1	Aklavik	1	1 km west of junction with Tuktoyuktuk winter road
deln / ftf-1	Deline	1	1 km east of junction with Highway 1
elwr / lacl	Wha'ti	72	1 km west of junction with Rae Lakes Access road
lacr	Wha'ti / Rae Lakes	72	1 km north of junction with Wha'ti Access road
nbwr / nah-1	Nahanni Butte	2	2 km west of junction with Highway 7
tlwr	Trout Lake	1	1 km south of junction with Highway 1
tuk-1	Tuktoyuktuk	1	km 34 on Tuk winter road, 1 km north of junction with Aklavik winter road
wbnp	Wood Buffalo National Park		

1.3 Traffic Data Processing

The permanent traffic counters located throughout the Northwest Territories highway network collect traffic data on a continual basis. This data is stored to memory every hour. Approximately once per month, personnel working out of the highway maintenance camps download the data to a module, clear the internal memory of the counter, and send the downloaded data to the Transportation Planning and Policy Division.

Personnel with the Transportation Planning and Policy Division download the data from the module to the government network in a flat file (ASCII format) and conduct a first level screening of the data. Any problems are noted and corrupt data is disregarded. The data is then copied into a Microsoft Excel spreadsheet and analysed to obtain the information presented in this report.

The first step in the analysis of the traffic data is to check for completeness and accuracy. Common problems include missing data due to the counter or module not functioning correctly, overlapping or missing data between months, and counts too high or low due to counter malfunctions. To ensure accurate results and also provide as much information as possible, a series of procedures has been established to correct deficiencies in the data. These steps are outlined in Appendix B.

1.4 Glossary of Terms

Average Annual Daily Traffic (AADT) is an estimate of the mean daily traffic for a period of one year.

Average Daily Traffic (ADT) is an estimate of the mean traffic for a specified period of time. For example, monthly ADT is an estimate of the mean daily traffic for a specified month.

Growth Rate is the increase or decrease in AADT from year to year.

Near Urban Highway is a section of highway located within or near a major urban centre.

Peak Summer Average Daily Traffic (PSADT) is an estimate of the mean daily traffic for the months of June, July and August.

Permanent Traffic Counter is a counter that is permanently placed at a specific location and counts traffic continuously.

Rural Highway is a section of highway located away from the traffic influence of a major urban centre.

Short Term Counts provide measurements of traffic characteristics based on visual observation for a specified period of time and purpose.

Traffic distributions illustrate how traffic varies over time. Distributions may be by month, by day of the week or hourly, and is usually measured as a percent of the AADT.

Vehicle Classification is the distribution of vehicle types in a traffic stream.

Vehicle Kilometres Travelled is the total number of vehicles for a specific road segment multiplied by the length of the road segment.

1.5 Layout of the Report

This report is organized into four sections.

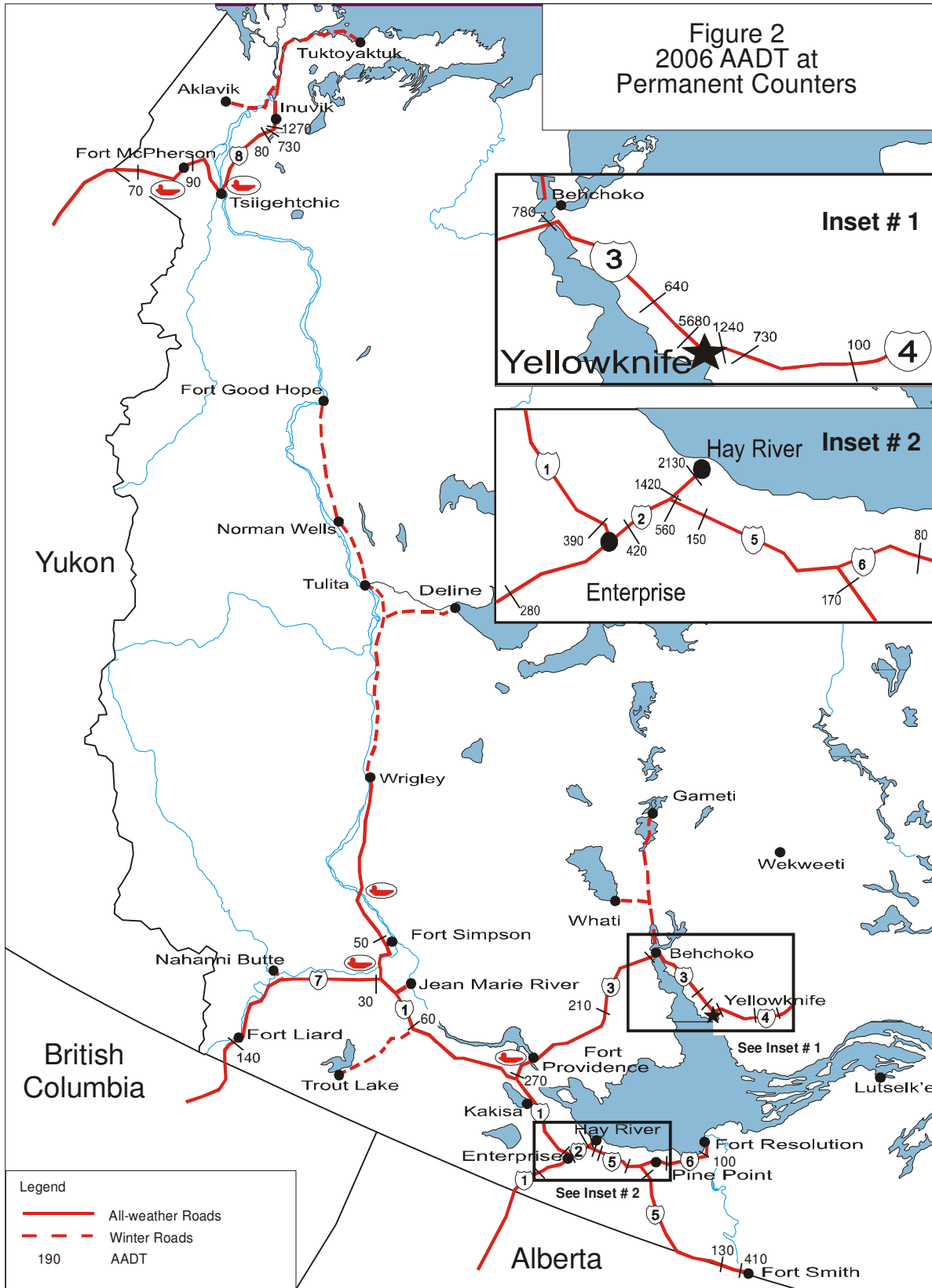
Section 1 provides an introduction to the Northwest Territories traffic data collection system.

Section 2 presents the traffic information collected at all permanent counter locations and selected mining roads; including traffic volumes, distributions and vehicle kilometres travelled.

Section 3 presents traffic information collected on highway ferries, and commercial vehicle activity from the weigh scales.

The Appendices present additional detailed traffic information.

Figure 2
2006 AADT at
Permanent Counters



Note: Some data in this figure has been estimated using information from past years. See Appendix A for actual data.

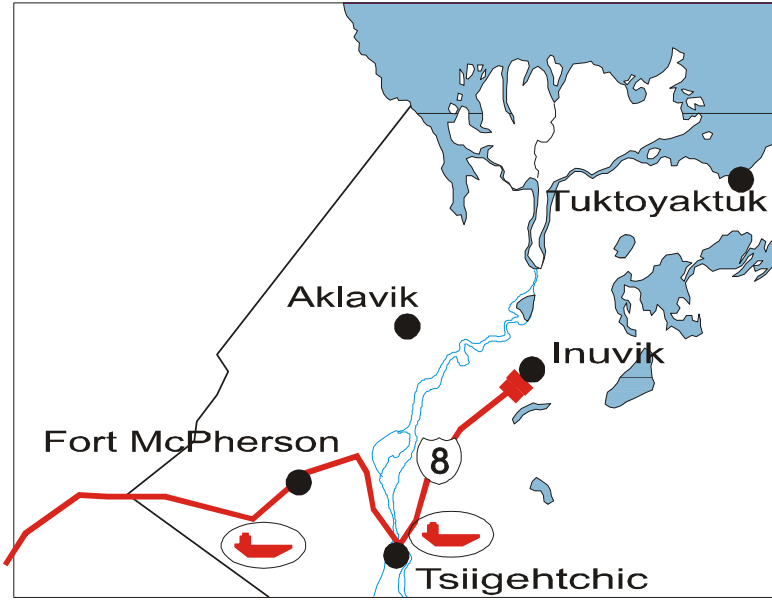


Figure 3
2006 AADT on
Highway Segments

Line Thickness	AADT
	0-49
	50-99
	100-199
	200-299
	300-399
	400-499
	500-999
	1000+

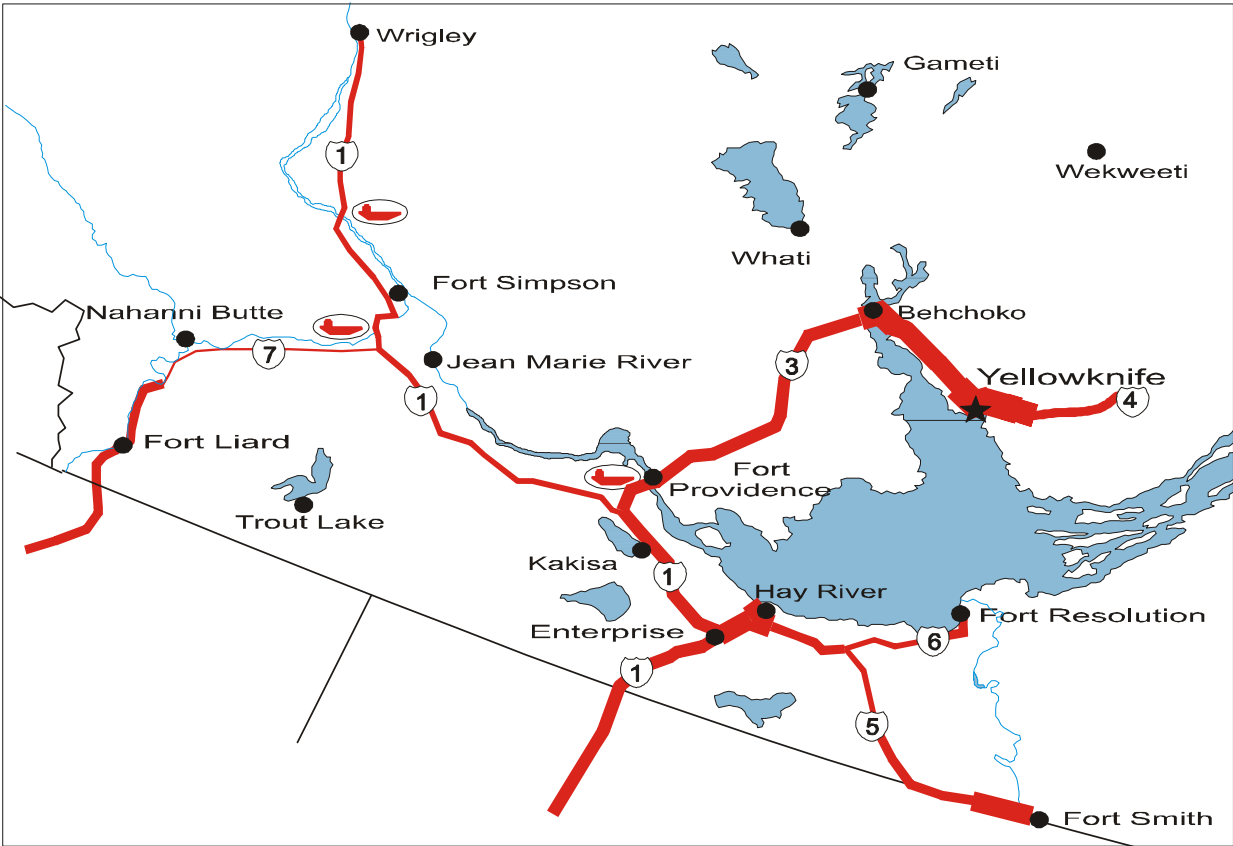


Table 3 Estimated Traffic on Northwest Territories Highways

Highway	Kilometre	Counter ID	Description	AADT										PSADT									
				2006	2005	2004	2003	2002	2001	2000	1999	1998	2006	2005	2004	2003	2002	2001	2000	1999	1998		
1	58	1-58	15 km south of Alexandra Falls	280	280		250	250	240	230	220	210			350	390		380	420	390	350	340	320
1	85	1-85	1.2 km west of Enterprise	390	300		270	270	250	240	230	230			380	420		380	400	320	320	320	330
1	322	1-322	0.4 km west of Trout Lake winter road	60	70		60	60	60	60	**	50			60	90		80	90	80	80	**	80
1	477	1-477	5.2 km west of Fort Simpson Access on Highway 1	70	60		50	50	40	40	**	40			60	60		60	70	60	60	**	50
2	10	2-10	10 km north of Enterprise, south of Paradise Gardens	420	450		410	420	400	400	400	410			490	550		510	530	500	500	510	520
2	32	2-32	40 metres north of Highway 2 and 5 intersection	1420	1460		1390	1420	1340	1340	**	1340			1920	1920		1920	1970	1860	1860	**	1760
2	42	2-42	North of West Channel across bridge	2130	2660		2530	2590	2440	2420	2400	2450			**	3130		3120	3200	3010	3010	3000	3050
3	2	3-2	2 km north of Highway 1 and 3 intersection, south of ferry	270	260		250	240	220	200	190	200			290	350		350	330	290	290	280	280
3	175	3-175	53 km north of Chan Lake, 62 km south of Edzo	210	210		210	210	190	180	180	180			**	290		290	280	270	260	**	**
3	240	3-240	3 km south of Rae access, south of Frank's Channel	780	650		650	640	590	570	550	560			860	710		710	700	670	650	**	**
3	324	3-324	21 km east of Boundry Creek	640	610		450	440	410	400	390	390			**	690		520	500	470	460	470	430
3	338	3-338	0.8 km west of Highway 3 and 4 intersection	5680	5570		5570	5460	5060	4980	5010	4890			6730	6460		6460	6330	6030	6030	6180	5740
4	1	4-1	1 km north of Highway 3 and 4 intersection	1240	1240		1240	1240	1240	1230	1330	1460			**	1600		1600	1600	1600	1600	1830	1850
4	10	4-10	2.5 km east of Yellowknife River Bridge	730	730		730	730	730	720	**	**			**	950		950	950	950	950	**	**
4	43	4-43	11 km east of Prelude Lake East Access	100	100		100	100	100	100	**	100			**	130		130	130	130	140	**	130
5	1	5-1	1 km east of Highway 2 and 5 intersection	560	560		560	530	520	510	520	520			**	740		740	710	690	690	700	730
5	19	5-19	19 km east of Highway 2 and 5 intersection	150	170		170	160	160	170	170	170			180	230		230	220	220	220	210	220
5	65	5-65	5 km south of Highway 5 and 6 intersection	170	80		80	70	70	70	80	70			**	100		110	100	100	100	110	90
5	232	5-232	25km west of Fort Smith	130	130		130	120	120	120	**	110			**	200		200	190	180	180	**	140
5	257	5-257	6.1 km west of Fort Smith	420	420		410	390	390	390	390	380			**	530		530	510	500	480	480	460
6	30	6-30	8.5 km east of Pine Point Access	80	80		80	80	80	80	80	80			80	90		100	110	100	100	90	90
6	74	6-74	16 km west of Fort Resolution	100	120		110	100	110	100	100	110			130	130		140	140	130	130	120	140
7	35	7-35	2.6 km south of Fort Liard	140	120		120	120	120	**	**	120			**	130		130	130	130	**	**	130
7	253	7-253	0.3 km south of Highway 1 and 7 intersection	30	30		30	30	30	30	30	30			40	40		40	40	40	50	50	50
8	34	8-34	10 km west of Midway Lake	70	50		50	50	40	40	40	40			130	90		100	100	90	90	100	90
8	106	8-106	4.6 km north of Fort McPherson Access	90	100		80	80	80	80	90	90			130	140		180	170	150	160	180	170
8	243	8-243	1 km south of Cabin Creek	80	80		80	80	70	80	80	80			**	130		130	130	120	120	130	130
8	260	8-260	0.7 km north of airport access	740	740		730	690	630	630	630	630			**	760		760	900	830	850	930	880
8	268	8-268	1.3 km south of Inuvik	1370	1370		1270	1210	1120	1120	1150	1150			**	1400		1300	1640	1510	1500	1650	1560

Data Not Available

Data Not Available

Note: See Appendix A for actual data obtained from each traffic counter for 2006.
 ** Insufficient data to calculate AADT/PSADT
 AADT - Average Annual Daily Traffic
 PSADT - Peak Summer Average Daily Traffic (June, July, August)
 All values are estimated and rounded to the nearest 10.

Table 4 Traffic on Northwest Territories Access Roads (sorted by counter)

Community	Location (km)	Counter ID	Year	Monthly Average Daily Traffic												PSADT					
				Jan	Feb	Mar	Apr	May	Jun	Jul	Aug	Sep	Oct	Nov	Dec						
Kakisa	2	kak-2	2000	24	43	52	74	86	50				33	36	47						
			1999	27	27	38	60	89	53				52	38	27	25					
			1998				28	64	77	101	80	55	32	29	23	86					
			1997	23	21	21		94	79	90	37	15	21	20	89						
			1996	18	23	25	23	49	84	109	90	43	31	24	24	95					
			1995	26			24		77	109	76	54	31	23	24	87					
			1994	15	19	17		49	68	109	87	48	37		24	89					
			1993	16		20	21	46	61	81	94	44	29	20	20	79					
Rae	4.2	rae-4	2004		693	667															
			1998				433														
			1997						543	593	542	568							589		
			1996		283				580		686	673	582	373						686	
			1995							553	614	621	644	581	389					588	
			1994			194							681								
1993	584	237					550		467	298							506				
Dettah	1	dvr-1	2001	56	161			283	284	256			216						274		
			2000	48	34	54	95	261	310	211	278	290	277	235						266	
			1999		44	53	292	277			245	270	289	293	246						266
			1998	73	65	57	31	121	156	134	121				259	212				139	
			1997								126	98	241	252	186						127
			1996								237	211	252	258	262						231
			1995	48	42	44	118		260	215	212	250	240	217							227
			1994			52	130		269	228		252	248	228	125						254
1993	48	43	55	212	223	210	198	190	211	222	248							199			
Paradise Gardens	2	pgr-1	1996	78	90	93	109	111	157	160	172	141	122	103	99				163		
			1995								143	134	109	94	78					143	
			1994	69	65	68	96	110	138	128	140	123								135	
			1993							114	97	109	103	87	76	73				107	
Vee Lake	4.3	vee-4	2005			75	65	58	72	68	59	45	35	20					66		
			2004	40	61	55		59													
			2003																		
			2002	56								57	54	34	52	44				57	
			2001							60	75	44	19							60	
			2000																		
			1999	43	82	70	58	39													
			1998	63	71	70	58	79	77	77	59	49	35	37	20					70	
			1997						86	65	63	41	33							71	
			1996						100	67	58	37	25	38						69	
			1995							71	51	52	26	41						61	
1994							90	84	56	47	33						76				
1993					76	85	72	59	46	32	28	28					73				
Cassidy Point	4	cas-4	1998								96	54	46	35					97		
			1997							57	50	36	36						55		
			1996							123	94	75	49	43					109		
			1995										46	34							
			1994		75	88	177	84	96	102	82	67	53							93	
			1993							90	100	80	64	50	44					97	
Prelude Lake West	1	prw-1	1998							193	238	139	78	57					238		
			1997						290	290	253	141	64						280		
			1996						331	256	243	127	90	101					264		
			1995										83	50					305		
			1994																		
1993								239		117	85	63					232				
Prelude Lake East	3	pre-3	2000						306										306		
			1999					283	307	261									284		
			1998																		
			1997							5	88	83	74	59						86	
			1996							116	83	76	78	62	58					86	
			1995									68	65	48	29					68	
			1994									85	71	64	54					76	
1993					93	91	86			82	72						88				

Table 4 cont'd Traffic on Northwest Territories Access Roads (sorted by counter)

Community	Location (km)	Counter ID	Year	Monthly Average Daily Traffic												PSADT					
				Jan	Feb	Mar	Apr	May	Jun	Jul	Aug	Sep	Oct	Nov	Dec						
Hay River Dene Village	1	hrd-1	2005		86	83	178	479					546	378							
			2004	84	80	73															
			2001			36	404		287			623	469	121	441				455		
			2000	14	37	52	304	416	453	400	421	469								427	
			1999	32	37	126	357			356	399	425	167						33	405	
			1998	62	40	48	267						420	301					45		
			1997	29	33	42					395	362							396	378	
			1996	31	54	71	354	446			480	383	416	373	390	255	33			426	
			1995	29	33	41	216				451	391	420	407	414	170	43			420	
			1994	26	31	75	302										46			39	
			1993	28	27	137	376				411	356	365	333	344	234	50				
			Fort Providence	2	ftp-2	2006	318	301	280	303	420	500	478				355	266	405		
2005		362				464	133	43	415	387	333				201	180				378	
2004	255	298																			
2003	260	269				264			396	353	515	551								472	
2002	277	243				248						457	375	334	279			289		457	
2001						208					324	352	365	336	207					347	
2000	315	421				270	219	299	259	254	210	194	200	139	119					241	
1999	316	423				259	309	662	239	205	176	170	154	149						201	
1998	249	276				271	397	315					309	328	254	49					
1997						213					465	439	488	337	271						468
1996	211	227				242	297	360	421	419	501	397	307	331	247					446	
1995	200	228				226	273	357	368	426	477	303	262	244						424	
1994	197	192	246	281	381	449	512	383	315	243	222	230					348				
1993	183	99	188	334	404	444	531	456	295	275	233	227					477				
Fort Liard	1	fli-1	1998			242	175	207	332	405	326	249						355			
			1997	166	218	211	238						132	89							
			1996		195	210					252	197	193	156			142		219		
			1995	172	366	339	213	220	209	255	297	220	172	135	134				254		
			1994	150	161	197	169	206			231	190	199	162	172				232		
			1993	155	165	166	170	180	204	211	193	180	171	162	146				202		
Fort Simpson	1	sim-1	2006	1075		1176	1126	1293	1465	1386	1397				1445	1341		1416			
			2005								1292	1493	1313	1202	1107	1041		1393			
			2004																		
			2003			1289	1302														
			2001				430						269	354							
			2000	961	991	1093	1110					911								911	
			1999	960	989	1076	1114	891													
			1998										1235	1128	976	1007					
1997	478	895	866					1100	1215	1143	1208	978					1176				
1996												1054	867	773							
Jean Marie River	1	jmar	2006			22	85	71	32	33	13	29				25		26			
			2005								24	23	33	23					24		
			2004																		
			2003			34	36														
			2001																		
			2000				16	22	30	23	17		19	27	81				24		
			1999																		
			1998	12	18	18	14	14	62			89	70	49						84	
1997	14	13														17					

Note: Blanks indicate insufficient data to calculate monthly ADT.

Table 5 Monthly Average Daily Traffic on Northwest Territories Winter Roads (sorted by road)

Winter Road	Location (km)	Counter ID	Year	Opening Date	Closing Date	Number Days	Monthly Average Daily Traffic					ADT	
							Dec	Jan	Feb	March	April		May
Aklavik	1	aki-1	1996	19-Dec-1995	26-Apr-1996	129			32	49	43		41
			1995	23-Dec-1994	24-Apr-1995	122							
			1994	18-Jan-1994	28-Apr-1994	100							
			1993	15-Dec-1992	2-May-1993	138			53	61	70	32	54
Colville Lake	1	col-1	2007	4-Jan-2007	31-Mar-2007	86		18	14	27			20
			2006	13-Jan-2006	22-Mar-2006	68		4	14	17			14
			2005	13-Dec-2004	31-Mar-2005	108			54	54			54
Deline	1	deln	2007	19-Jan-2007	31-Mar-2007	71		36	32	43			37
			2006	25-Jan-2006	22-Mar-2006	56		54	49	39			45
			1998	3-Feb-1998	16-Mar-1998	41		13	15				15
			1997	4-Feb-1997	17-Mar-1997	41		110	73	46			76
			1996	18-Jan-1996	20-Mar-1996	62							
			1995	20-Jan-1995	26-Mar-1995	65			39	35			37
			1994	25-Jan-1994	30-Mar-1994	64		42	19	30			30
			1993	18-Jan-1993	29-Mar-1993	70		16	23	35	21		23
Dettah Ice Road (Yellowknife Side)	at entrance	dettah	2007	4-Jan-2007	12-Apr-2007	98			496	461			479
			2006	20-Dec-2005	16-Apr-2006	117	686	644	712	814	764		726
			2005	10-Dec-2004	11-Apr-2005	122	652	624	829	973			791
Gameti	72	lacr	2007	28-Feb-2007	12-Apr-2007	43					43	55	49
			1997	7-Feb-1997	25-Mar-1997	46		78	170	152			133
			1996	2-Feb-1996	20-Mar-1996	47							
			1995	13-Jan-1995	22-Mar-1995	68							
Highway No. 1 (Wrigley)	695	1-695	2006	19-Dec-2005	7-Apr-2006	109		53	74	85		76	
			2005	13-Dec-2004	31-Mar-2005	108		39	49	51			49
Highway No. 1 (Deline Junction)	914	1-914	2007	20-Dec-2006	9-Apr-2007	110		77	95	77			83
			2006	19-Dec-2005	7-Apr-2006	109		44	50	45			47
			2005	4-Jan-2005	31-Mar-2005	86		21	70	64			63
			1998	6-Feb-1998	16-Mar-1998	38		10	7				8
			1997	14-Feb-1997	17-Mar-1997	31			7	34	17		19
			1996	26-Jan-1996	20-Mar-1996	54							
			1995	12-Jan-1995	19-Mar-1995	66			29	35			32
			1994	23-Dec-1993	29-Mar-1994	96		12	20	23			19
			1993	11-Jan-1993	26-Mar-1993	74			27	27			27
Highway No. 1 (Norman Wells South)	1022	1-102	2007	21-Dec-2006	9-Apr-2007	109		81	87	113	57		85
			2006	19-Dec-2005	7-Apr-2006	109		98	68	77			74
			2005	4-Jan-2005	31-Mar-2005	86		51	70	86			80
			1999	31-Dec-1998	16-Mar-1999	75			33				33
			1998	23-Jan-1998	16-Mar-1998	52			107	139			112
			1997	14-Jan-1997	17-Mar-1997	62			9	10			10
			1996	8-Jan-1996	20-Mar-1996	72							
			1995	18-Jan-1995	26-Mar-1995	67							
			1994	29-Dec-1993	30-Mar-1994	91		40	49	55			48
			1993	14-Jan-1993	29-Mar-1993	74		16	19	18	4		14
Highway No. 1 (Norman Wells North)	1031	1-104	2007	21-Dec-2006	9-Apr-2007	109		59	47	66			57
			2006	29-Dec-2005	7-Apr-2006	99			55	52			53
			1998	14-Jan-1998	16-Mar-1998	61		14	10	10	9		10
			1997	14-Jan-1997	17-Mar-1997	62			66	42			54
			1996	8-Jan-1996	20-Mar-1996	72							
			1995	19-Jan-1995	26-Mar-1995	66							
			1994	29-Dec-1993	31-Mar-1994	92		19	20	24			21
Nahanni Butte	2	nbwr	1997	9-Dec-1996	17-Apr-1997	129		23	40	69	13		36
			1996	1-Dec-1995	25-Mar-1996	115		11	10	19			13
			1995	1-Dec-1994	26-Mar-1995	115		10	17	39			22
			1994	18-Dec-1993	28-Mar-1994	100			20	18			19
			1993	15-Dec-1992	27-Mar-1993	102			13	12			12
Tibbitt to Contwoyto	0.3	lupin	2007	28-Jan-2007	8-Apr-2007	70		251	482	323	67		281
			2006	1-Feb-2006	23-Mar-2006	50			167	243			201
Tii'Cho	0.1	tii'cho	2007	3-Feb-2007	12-Apr-2007	68			64	115	188		122
			2006	7-Feb-2006	16-Apr-2006	68			71	77			74
Trout Lake	1	tlwr	2002	14-Jan-2002	18-Mar-2002	63		6	7				7
			2001	18-Dec-2000	15-Mar-2001	87							
			2000	11-Jan-2000	15-Mar-2000	64							
			1999	21-Dec-1998	16-Mar-1999	85			9	7	9		8
			1998	20-Jan-1998	16-Mar-1998	55					5		5
			1997	11-Jan-1997	17-Mar-1997	65				5	9		7
			1996	20-Jan-1996	15-Mar-1996	55		4	6	11	9		8
			1995	22-Dec-1994	22-Mar-1995	90				8			8
			1994	18-Jan-1994	31-Mar-1994	72							
			1993	24-Dec-1992	24-Mar-1993	90		8	10	12			10
Tuktoyaktuk	1	tuk-1	1997	20-Dec-1996	25-Apr-1997	126		30	44	61			45
			1996	19-Dec-1995	19-Apr-1996	122							
			1995	22-Dec-1994	24-Apr-1995	123			74				74
			1994	5-Jan-1994	28-Apr-1994	113							
			1993	18-Dec-1992	2-May-1993	135		32	83	108	101		81
Wha'ti	72	elwr	1997	20-Jan-1997	25-Mar-1997	64		31	45	64			47
			1996	15-Jan-1996	20-Mar-1996	65							
			1995	13-Jan-1995	29-Mar-1995	75							
			1994	18-Feb-1994	18-Apr-1994	59							
			1993	27-Jan-1993	2-Apr-1993	65				16	14		15
Wood Buffalo National Park	Note: Blanks may indicate insufficient data to calculate monthly ADT, road closed, or counter not installed.	wbnp	2004						29	25			27
			2000						7	15	17		13
			1997						16	20	20	8	16
			1996						22	18	20	24	21
			1995						17	17	15		16
			1994							13	3		8
1993							16	17	14		16		

Note: Blanks may indicate insufficient data to calculate monthly ADT, road closed, or counter not installed.

Table 6 Opening and Close Dates for Winter Roads & Ice Bridges

	Winter Roads				Ice Bridges																Mining Roads	
	Fl Simpson - Wigley (Highway #1)	Wigley - Tulla (Highway #1)	Tulla - Norman Wells (Highway #1)	Norman Wells - Hope (Highway #1)	Colville Lake Access	Delline Access	Tout Lake Access	Nahanni Bluffs Access	Jean-Marie River Access	Wilva T1 Access	Garnett Access	Derbyn Access	Tuktoyaktuk Access	Alakytik Access	Mackenzie River Crossing at Fort Providence	Laird River Crossing at Simpson	Mackenzie River Crossing at Tsighnehtic	Peel River Crossing	Mackenzie River Crossing at Channel Bend	Lupin Mine		
1983/84	Open 12-Jan Closed 13-Apr	Open 13-Jan Closed 4-Apr	Open 13-Jan Closed 4-Apr	Open 13-Jan Closed 4-Apr	Open 16-Jan Closed 4-Apr	Open 18-Jan Closed 31-Mar	Open 16-Jan Closed 31-Mar	Open 6-Dec Closed 31-Mar	Open 4-Jan Closed 31-Mar	Open 16-Jan Closed 31-Mar	Open 13-Dec Closed 13-Apr	Open 16-Jan Closed 2-May	Open 22-Dec Closed 2-May	Open 16-Dec Closed 12-Apr	Open 3-Dec Closed 18-Apr	Open 18-Nov Closed 8-May	Open 10-Nov Closed 8-May	Open 12-Jan Closed 13-Apr	Open 17-Feb Closed 14-Apr			
1984/85	Open 27-Dec Closed 20-Mar	Open 15-Jan Closed 20-Mar	Open 15-Jan Closed 20-Mar	Open 15-Jan Closed 20-Mar	Open 15-Jan Closed 20-Mar	Open 21-Jan Closed 20-Mar	Open 20-Dec Closed 20-Mar	Open 9-Nov Closed 20-Mar	Open 18-Dec Closed 20-Mar	Open 14-Jan Closed 20-Mar	Open 20-Nov Closed 20-Mar	Open 11-Dec Closed 1-May	Open 24-Dec Closed 4-May	Open 13-Dec Closed 22-Apr	Open 19-Nov Closed 2-May	Open 15-Nov Closed 11-May	Open 7-Nov Closed 11-May	Open 27-Dec Closed 20-Mar	Open 30-Jan Closed 8-Apr			
1985/86	Open 18-Dec Closed 3-Apr	Open 25-Jan Closed 3-Apr	Open 23-Dec Closed 3-Apr	Open 23-Dec Closed 3-Apr	Open 17-Jan Closed 3-Apr	Open 6-Jan Closed 3-Apr	Open 30-Dec Closed 3-Apr	Open 6-Nov Closed 3-Apr	Open 18-Dec Closed 3-Apr	Open 11-Jan Closed 2-Apr	Open 28-Nov Closed 28-Apr	Open 12-Dec Closed 2-May	Open 12-Dec Closed 2-May	Open 13-Dec Closed 15-Apr	Open 14-Nov Closed 26-Apr	Open 14-Nov Closed 9-May	Open 6-Nov Closed 10-May	Open 18-Dec Closed 3-Apr	Open 22-Jan Closed 7-Apr			
1986/87	Open 17-Dec Closed 1-Apr	Open 13-Jan Closed 25-Mar	Open 19-Jan Closed 26-Mar	Open 19-Jan Closed 26-Mar	Open 9-Jan Closed 26-Mar	Open 10-Dec Closed 30-Mar	Open 15-Dec Closed 31-Mar	Open 18-Nov Closed 31-Mar	Open 20-Dec Closed 31-Mar	Open 12-Jan Closed 31-Mar	Open 21-Nov Closed 15-Apr	Open 5-Jan Closed 8-May	Open 5-Jan Closed 7-May	Open 17-Dec Closed 16-Apr	Open 25-Nov Closed 21-Apr	Open 19-Nov Closed 9-May	Open 4-Nov Closed 9-May	Open 17-Dec Closed 3-Apr	Open 14-Jan Closed 1-Apr			
1987/88	Open 21-Dec Closed 14-Apr	Open 11-Jan Closed 28-Mar	Open 8-Jan Closed 5-Apr	Open 8-Jan Closed 5-Apr	Open 13-Jan Closed 5-Apr	Open 5-Jan Closed 31-Mar	Open 6-Jan Closed 5-Apr	Open 25-Nov Closed 5-Apr	Open 15-Jan Closed 5-Apr	Open 8-Feb Closed 15-Apr	Open 18-Dec Closed 19-Apr	Open 15-Feb Closed 19-Apr	Open 17-Feb Closed 19-Apr	Open 30-Dec Closed 16-Apr	Open 29-Nov Closed 19-Apr	Open 16-Dec Closed 11-May	Open 18-Nov Closed 12-May	Open 21-Dec Closed 14-Apr	Open N/A Closed N/A			
1988/89	Open 15-Dec Closed 14-Apr	Open 16-Jan Closed 5-Apr	Open 16-Jan Closed 10-Apr	Open 27-Feb Closed 10-Apr	Open 27-Jan Closed 7-Apr	Open 11-Jan Closed 7-Apr	Open 10-Jan Closed 7-Apr	Open 16-Dec Closed 5-Apr	Open 23-Jan Closed 5-Apr	Open 3-Feb Closed 19-Dec	Open 7-Feb Closed 14-Apr	Open 18-Jan Closed 3-May	Open 18-Jan Closed 3-May	Open 21-Dec Closed 15-Apr	Open 8-Dec Closed 14-Apr	Open 28-Nov Closed 29-Apr	Open 15-Nov Closed 29-Apr	Open 15-Dec Closed 14-Apr	Open 12-Feb Closed 9-Apr			
1989/90	Open 12-Dec Closed 10-Apr	Open 15-Jan Closed 30-Mar	Open 16-Dec Closed 5-Apr	Open 15-Jan Closed 5-Apr	Open 12-Jan Closed 4-Apr	Open 12-Jan Closed 30-Mar	Open 21-Dec Closed 30-Mar	Open 29-Nov Closed 30-Mar	Open 19-Jan Closed 10-Apr	Open 2-Feb Closed 10-Apr	Open 13-Dec Closed 7-May	Open 3-Jan Closed 7-May	Open 23-Dec Closed 7-May	Open 12-Dec Closed 17-Apr	Open 11-Nov Closed 14-Apr	Open 18-Dec Closed 3-May	Open 20-Nov Closed 1-May	Open 12-Dec Closed 10-Apr	Open 14-Feb Closed 7-Apr			
1990/91	Open 12-Dec Closed 13-Apr	Open 8-Jan Closed 31-Mar	Open 8-Jan Closed 8-Apr	Open 2-Jan Closed 8-Apr	Open 7-Feb Closed 4-Apr	Open 17-Dec Closed 4-Apr	Open 12-Dec Closed 4-Apr	Open 20-Nov Closed 4-Apr	Open 16-Jan Closed 8-Apr	Open 22-Jan Closed 12-Apr	Open 4-Dec Closed 23-Dec	Open 21-Dec Closed 25-Apr	Open 21-Dec Closed 25-Apr	Open 28-Nov Closed 19-Apr	Open 1-Nov Closed 13-Apr	Open 24-Nov Closed 7-May	Open 16-Nov Closed 8-May	Open 12-Dec Closed 13-Apr	Open 1-Feb Closed 22-Mar			
1991/92	Open 2-Dec Closed 27-Apr	Open 20-Dec Closed 25-Mar	Open 20-Dec Closed 4-Apr	Open 20-Dec Closed 4-Apr	Open 24-Jan Closed 22-Mar	Open 10-Jan Closed 22-Mar	Open 9-Jan Closed 27-Mar	Open 13-Nov Closed 27-Mar	Open 15-Jan Closed 7-Apr	Open 24-Jan Closed 7-Apr	Open 9-Dec Closed 23-Apr	Open 5-Dec Closed 26-Apr	Open 9-Dec Closed 27-Apr	Open 12-Dec Closed 26-Apr	Open 9-Nov Closed 30-Apr	Open 20-Nov Closed 30-Apr	Open 13-Nov Closed 30-Apr	Open 2-Dec Closed 27-Apr	Open 23-Jan Closed 13-Mar			
1992/93	Open 9-Dec Closed 29-Mar	Open 11-Jan Closed 26-Mar	Open 11-Jan Closed 29-Mar	Open 14-Jan Closed 29-Mar	Open 18-Jan Closed 24-Dec	Open 24-Dec Closed 1-Apr	Open 15-Dec Closed 1-Apr	Open 4-Nov Closed 2-Apr	Open 27-Jan Closed 2-Apr	Open 19-Feb Closed 2-Apr	Open 18-Dec Closed 30-Apr	Open 18-Dec Closed 30-Apr	Open 15-Dec Closed 2-May	Open 22-Dec Closed 14-Apr	Open 2-Dec Closed 20-Apr	Open 23-Nov Closed 12-May	Open 6-Nov Closed 12-May	Open 9-Dec Closed 20-Apr	Open 28-Jan Closed 22-Mar			
1993/94	Open 11-Dec Closed 12-Apr	Open 23-Dec Closed 29-Mar	Open 28-Dec Closed 30-Mar	Open 28-Dec Closed 31-Mar	Open 25-Jan Closed 31-Mar	Open 18-Jan Closed 28-Mar	Open 18-Dec Closed 3-Apr	Open 1-Dec Closed 3-Apr	Open 18-Feb Closed 18-Apr	Open 18-Feb Closed 18-Apr	Open 8-Dec Closed 28-Apr	Open 5-Jan Closed 28-Apr	Open 18-Jan Closed 28-Apr	Open 20-Dec Closed 23-Apr	Open 14-Dec Closed 23-Apr	Open 24-Nov Closed 5-May	Open 20-Nov Closed 11-May	Open 11-Dec Closed 12-Apr	Open 3-Feb Closed 1-Apr			
1994/95	Open 20-Jan Closed 19-Mar	Open 22-Jan Closed 26-Mar	Open 18-Jan Closed 26-Mar	Open 19-Jan Closed 26-Mar	Open 20-Jan Closed 26-Mar	Open 22-Dec Closed 26-Mar	Open 1-Dec Closed 22-Mar	Open 10-Nov Closed 22-Mar	Open 13-Jan Closed 29-Mar	Open 30-Jan Closed 2-Feb	Open 13-Dec Closed 21-Apr	Open 22-Dec Closed 24-Apr	Open 23-Dec Closed 24-Apr	Open 4-Dec Closed 25-Apr	Open 23-Nov Closed 26-Apr	Open 25-Nov Closed 2-May	Open 21-Nov Closed 2-May	Open 9-Dec Closed 22-Apr	Open 18-Jan Closed 3-Apr			
1995/96	Open 26-Jan Closed 20-Mar	Open 8-Jan Closed 20-Mar	Open 8-Jan Closed 20-Mar	Open 8-Jan Closed 20-Mar	Open 18-Jan Closed 20-Mar	Open 20-Jan Closed 15-Mar	Open 1-Dec Closed 25-Mar	Open 29-Nov Closed 26-Mar	Open 15-Jan Closed 20-Mar	Open 2-Feb Closed 20-Mar	Open 29-Nov Closed 17-Apr	Open 19-Dec Closed 19-Apr	Open 19-Dec Closed 26-Apr	Open 4-Dec Closed 12-Apr	Open 16-Nov Closed 23-Apr	Open 30-Nov Closed 28-Apr	Open 30-Nov Closed 28-Apr	Open 30-Nov Closed 23-Apr	Open 25-Jan Closed 13-Apr			
1996/97	Open 14-Feb Closed 17-Mar	Open 14-Jan Closed 17-Mar	Open 14-Jan Closed 17-Mar	Open 14-Jan Closed 17-Mar	Open 4-Feb Closed 17-Mar	Open 11-Jan Closed 17-Mar	Open 22-Oct Closed 11-Apr	Open 22-Oct Closed 11-Apr	Open 20-Jan Closed 25-Mar	Open 7-Feb Closed 25-Mar	Open 12-Dec Closed 18-Apr	Open 20-Dec Closed 25-Apr	Open 12-Jan Closed 25-Apr	Open 9-Dec Closed 22-Apr	Open 14-Nov Closed 18-Apr	Open 19-Nov Closed 10-May	Open 12-Nov Closed 10-May	Open 13-Dec Closed 27-Apr	Open 28-Jan Closed 12-Apr			
1997/98	Open 3-Feb Closed 16-Mar	Open 23-Jan Closed 13-Mar	Open 14-Dec Closed 16-Mar	Open 14-Dec Closed 16-Mar	Open 3-Feb Closed 16-Mar	Open 23-Jan Closed 16-Mar	Open 16-Dec Closed 16-Mar	Open 9-Dec Closed 9-Apr	Open 7-Feb Closed 9-Apr	Open 18-Dec Closed 16-Apr	Open 2-Jan Closed 15-Apr	Open 26-Jan Closed 16-Apr	Open 26-Jan Closed 16-Apr	Open 9-Jan Closed 16-Apr	Open 27-Nov Closed 17-Apr	Open 1-Dec Closed 17-May	Open 18-Nov Closed 2-May	Open 12-Jan Closed 17-Apr	Open 19-Jan Closed 4-Apr			
1998/99	Open 21-Jan Closed 16-Mar	Open 21-Dec Closed 16-Mar	Open 21-Dec Closed 15-Mar	Open 21-Dec Closed 15-Mar	Open 21-Jan Closed 16-Mar	Open 21-Dec Closed 16-Mar	Open 21-Dec Closed 16-Mar	Open 21-Dec Closed 16-Mar	Open 25-Jan Closed 7-Apr	Open 8-Feb Closed 1-Apr	Open 31-Dec Closed 9-Apr	Open 16-Dec Closed 20-Apr	Open 14-Dec Closed 21-Apr	Open 23-Dec Closed 16-Apr	Open 25-Nov Closed 12-Apr	Open 20-Nov Closed 20-Apr	Open 16-Nov Closed 20-Apr	Open 14-Dec Closed 19-Apr	Open 1-Feb Closed 30-Mar			
1999/00	Open 28-Jan Closed 15-Mar	Open 11-Jan Closed 15-Mar	Open 24-Dec Closed 15-Mar	Open 24-Dec Closed 15-Mar	Open 28-Jan Closed 15-Mar	Open 11-Jan Closed 15-Mar	Open 13-Dec Closed 15-Mar	Open 13-Dec Closed 15-Mar	Open 1-Feb Closed 20-Apr	Open 11-Jan Closed 12-Apr	Open 14-Dec Closed 17-Apr	Open 14-Dec Closed 17-Apr	Open 17-Jan Closed 17-Apr	Open 6-Jan Closed 20-Apr	Open 3-Dec Closed 22-Apr	Open 15-Nov Closed 5-May	Open 5-Nov Closed 5-May	Open 31-Dec Closed 22-Apr	Open 28-Jan Closed 3-Apr			
2000/01	Open 19-Jan Closed 15-Mar	Open 15-Jan Closed 5-Apr	Open 8-Jan Closed 31-Mar	Open 8-Jan Closed 5-Apr	Open 23-Feb Closed 5-Apr	Open 20-Jan Closed 5-Apr	Open 18-Dec Closed 15-Mar	Open 18-Dec Closed 15-Mar	Open 20-Feb Closed 14-Apr	Open 10-Mar Closed 14-Apr	Open 21-Dec Closed 9-May	Open 20-Dec Closed 8-May	Open 24-Jan Closed 8-May	Open 21-Dec Closed 15-Apr	Open 21-Nov Closed 21-Apr	Open 16-Nov Closed 6-May	Open 20-Nov Closed 9-May	Open 14-Dec Closed 14-Apr	Open 1-Feb Closed 13-Apr			
2001/02	Open 22-Jan Closed 18-Mar	Open 20-Jan Closed 18-Mar	Open 20-Jan Closed 18-Mar	Open 20-Jan Closed 18-Mar	Open 22-Jan Closed 18-Mar	Open 20-Jan Closed 18-Mar	Open 27-Jan Closed 18-Mar	Open 9-Jan Closed 18-Mar	Open 24-Jan Closed 25-Apr	Open 11-Feb Closed 25-Apr	Open 21-Dec Closed 30-Apr	Open 2-Dec Closed 2-May	Open 31-Dec Closed 2-May	Open 24-Jan Closed 23-Apr	Open 2-Dec Closed 1-May	Open 20-Nov Closed 9-May	Open 9-Nov Closed 9-May	Open 14-Dec Closed 1-May	Open 26-Jan Closed 16-Apr			
2002/03	Open 19-Dec Closed 18-Mar	Open 29-Dec Closed 10-Apr	Open 19-Dec Closed 10-Apr	Open 19-Dec Closed 10-Apr	Open 19-Dec Closed 10-Apr	Open 19-Dec Closed 10-Apr	Open 12-Dec Closed 18-Mar	Open 16-Dec Closed 18-Mar	Open 17-Feb Closed 17-Apr	Open 9-Mar Closed 17-Apr	Open 19-Dec Closed 26-Apr	Open 17-Dec Closed 27-Apr	Open 23-Dec Closed 27-Apr	Open 9-Dec Closed 18-Apr	Open 26-Nov Closed 19-Apr	Open 20-Nov Closed 13-May	Open 14-Nov Closed 13-May	Open 6-Dec Closed 19-Apr	Open 28-Jan Closed 2-Apr			
2003/04	Open 13-Dec Closed 1-Apr	Open 4-Jan Closed 1-Apr	Open 13-Dec Closed 1-Apr	Open 13-Dec Closed 1-Apr	Open 13-Dec Closed 1-Apr	Open 13-Dec Closed 1-Apr	Open 21-Jan Closed 15-Mar	Open 21-Dec Closed 15-Mar	Open 14-Jan Closed 13-Apr	Open 28-Jan Closed 13-Apr	Open 10-Dec Closed 27-Apr	Open 7-Dec Closed 25-Apr	Open 6-Dec Closed 25-Apr	Open 6-Dec Closed 19-Apr	Open 29-Nov Closed 22-Apr	Open 12-Nov Closed 4-May	Open 31-Oct Closed 3-May	Open 12-Dec Closed 22-Apr	Open 26-Jan Closed 5-Apr			
2004/05	Open 19-Dec Closed 7-Apr	Open 19-Dec Closed 7-Apr	Open 29-Dec Closed 7-Apr	Open 29-Dec Closed 7-Apr	Open 13-Jan Closed 22-Mar	Open 25-Jan Closed 22-Mar	Open 22-Dec Closed 22-Mar	Open 8-Dec Closed 22-Mar	Open 7-Feb Closed 16-Apr	Open 16-Apr Closed 16-Apr	Open 20-Dec Closed 9-May	Open 9-Jan Closed 8-May	Open 13-Jan Closed 8-May	Open 17-Jan Closed 18-Apr	Open 25-Nov Closed 22-Apr	Open 1-Dec Closed 9-May	Open 17-Nov Closed 15-May	Open 19-Dec Closed 22-Apr	Open 5-Feb Closed 28-Mar			
2006/07	Open 22-Dec Closed 31-Mar	Open 20-Dec Closed 9-Apr	Open 21-Dec Closed 9-Apr	Open 21-Dec Closed 9-Apr	Open 4-Jan Closed 31-Mar	Open 19-Jan Closed 31-Mar	Open 5-Jan Closed 31-Mar	Open 1-Dec Closed 31-Mar	Open 3-Feb Closed 12-Apr	Open 28-Feb Closed 12-Apr	Open 4-Jan Closed 2-May	Open 5-Dec Closed 2-May	Open 6-Dec Closed 4-May	Open 8-Dec Closed 13-Apr	Open 24-Nov Closed 15-Apr	Open 24-Nov Closed 4-May	Open 9-Nov Closed 9-May	Open 22-Dec Closed 15-Apr	Open 28-Jan Closed 8-Apr			

Last 20 years average

Open	17-Dec	10-Jan	5-Jan	23-Jan	2-Jan	16-Dec	19-Nov	26-Jan	24-Jan	16-Dec	24-Dec	2-Jan	Open	21-Dec	23-Nov	24-Nov	3-Dec	14-Dec	Open	29-Jan
Closed	11-Apr	24-Mar	28-Mar	27-Mar	22-Mar	24-Mar	30-Mar	9-Apr	8-Apr	16-Apr	27-Apr	27-Apr	Closed	18-Apr	20-Apr	4-May	4-May	19-Apr	Closed	3-Apr

Last 5 years average

Open	25-Dec	31-Dec	4-Jan	18-Jan	23-Jan	26-Dec	11-Dec	31-Jan	12-Dec	18-Dec	17-Dec	25-Dec	Open	23-Dec	25-Nov	21-Nov	24-Jan	15-Dec	Open	30-Jan
Closed	27-Mar	2-Apr	28-Mar	30-Mar	28-Mar	20-Mar	20-Mar	16-Apr	16-Apr	16-Apr	30-Apr	30-Apr	Closed	16-Apr	20-Apr	2-May	4-May	19-Apr	Closed	2-Apr

Table 7 Truck Traffic on the Tibbitt to Contwoyto Winter Road

		Lupin Mine ⁽¹⁾	BHP Diamonds Ekati Mine	Diavik Diamond Mines Inc.	DeBeers Snap Lake	Tahera	Mineral Exploration Traffic	Total
2007	Total Tonnage	2,059	121,716	133,267	64,505	17,566	4,172	343,285
	Total Trucks	55	3,937	4,573	2,355	500	236	11,656
2006 ⁽²⁾	Total Tonnage	1,071	82,447	55,750	34,852	7,821	2,435	184,376
	Total Trucks	35	3,152	2,094	1,623	258	148	7,310
2005	Total Tonnage	7,709	117,661	94,303	18,089		14,771	252,533
	Total Trucks	251	3,434	2,848	703		614	7,850
2004	Total Tonnage	11,097	105,127	53,960	6,852		2,108	179,144
	Total Trucks	288	2,984	1,572	295		117	5,256
2003	Total Tonnage	27,832	101,990	67,394			1,602	198,818
	Total Trucks	702	3,003	2,202			87	5,994
2002	Total Tonnage	27,315	132,077	93,009			3,083	255,484
	Total Trucks	698	3,913	3,339			218	8,168
2001	Total Tonnage	26,239	99,297	111,506			8,545	245,587
	Total Trucks	688	2,912	4,127			363	8,090
2000	Total Tonnage	21,672	66,609	25,068			12,031	125,380
	Total Trucks	557		3,402				3,959
1999	Total Tonnage	3,356	41,453				12,399	57,208
	Total Trucks	85		1,759				1,844
1998 ⁽³⁾	Total Tonnage	4,220	73,712				4,056	81,988
	Total Trucks	112		2,431				2,543

The number of trucks indicated are "loaded truckloads" and therefore represents one-way traffic. To determine the total truck traffic these numbers should be multiplied by 2.

- (1) Winter road data provided by the Tibbitt to Contwoyto Winter Road Joint Venture.
Road is typically open during most of January to March.

2007 season	70 days (January 28 - April 8)
2006 season	50 days (February 5 - March 26)
2005 season	70 days (January 26 - April 5)
2004 season	64 days (January 28 - March 31)
2003 season	61 days (February 1 - April 2)
2002 season	81 days (January 26 - April 16)
2001 season	72 days (February 1 - April 13)
2000 season	65 days (January 29 - April 3)
1999 season	58 days (February 1 - March 30)
1998 season	76 days (January 19 - April 4)

Notes: BHP Diamond Mines Ekati Mine went into production in October of 1998.
Diavik Diamond Mine began construction of the mine site in 2000.

- (2) Climatically, 2006 was one of the warmest winters on record.
Winter road never reached full load bearing capacity.

- (3) For data preceeding 1998, please see Appendix B "Historical Data"

Refer to Figure 1 for the location of this winter road

Table 8 Estimated Vehicle Kilometres Traveled on NWT Highways

Hwy	km	Length (km)	AADT												Vehicle Kilometres Traveled (Millions)							
			2006	2005	2004	2003	2002	2001	2000	1999	1998	2006	2005	2004	2003	2002	2001	2000	1999	1998		
1	58	Alberta Border to Enterprise	84.2	280	280	250	250	240	230	220	210	8.7	8.7	7.6	7.8	7.4	7.1	6.7	6.6			
1	85	Enterprise to Junction with Hwy #3	103.4	390	300	270	270	250	240	230	230	14.8	11.4	10.3	10.1	9.4	9.2	8.6	8.8			
		1 Arterial	187.6									23.5	20.1	17.9	17.9	16.8	16.2	15.3	15.4			
2	10	Enterprise to Junction with Hwy #5	37.5	420	450	410	420	400	400	400	410	5.7	6.1	5.6	5.8	5.5	5.4	5.5	5.6			
2	32	Junction with Hwy #5 to Hay River (West Channel Bridge)	6.2	1420	1460	1390	1420	1340	1340	1340	1340	3.2	3.3	3.1	3.2	3.0	3.0	3.0	3.0			
		2 Arterial	43.7									8.9	9.4	8.7	9.0	8.5	8.5	8.5	8.7			
3	2	Junction with Hwy #1 to Fort Providence Access	44.1	270	260	250	240	220	200	190	200	4.3	4.2	4.0	3.9	3.5	3.2	3.0	3.2			
3	175	Fort Providence Access to Edzo Access	192.4	210	210	210	210	190	180	180	180	14.8	14.8	14.8	14.5	13.5	12.9	12.9	12.9			
3	240	Edzo Access to Rae Access	8.5	780	650	650	640	590	570	550	560	2.4	2.0	2.0	2.0	1.8	1.8	1.7	1.7			
3	324	Rae Access to Yellowknife Access (Old Airport Road)	88.5	640	610	450	440	410	400	390	390	20.7	14.6	14.6	14.3	13.1	12.9	12.7	12.7			
3	340	Old Airport Road Junction to Junction with Hwy #4	5.3	5680	5570	5570	5460	5060	4980	5010	4890	11.0	10.8	10.8	10.6	9.8	9.6	9.7	9.5			
		3 Arterial	338.8									53.2	46.4	46.1	45.2	41.7	40.3	40.1	39.9			
		Total Arterial	570.1									85.6	75.9	72.8	72.1	67.0	65.0	63.9	64.0			
1	322	Junction with Hwy #3 to Junction with Hwy #7	268.8	60	70	60	60	60	60	50	50	6.1	7.2	6.1	6.3	6.1	5.6	5.0	5.0			
*1	468	Junction with Hwy #7 to Fort Simpson Access	14.9	240	240	240	240	240	240	240	240	1.3	1.3	1.3	1.3	1.3	1.3	1.3	1.3			
1	477	Fort Simpson Access to Mackenzie River	79.2	70	60	40	50	40	40	40	40	1.9	1.6	1.2	1.5	1.2	1.2	1.2	1.2			
		1 Collector	362.9									9.3	10.1	8.6	9.1	8.6	8.1	7.5	7.5			
4	1	Junction with Hwy #3 to Royal Oak Mine	5	1240	1240	1240	1240	1240	1230	1330	1460	2.3	2.3	2.3	2.3	2.2	2.4	2.7	2.7			
4	10	Royal Oak Mine to Prelude Lake East Access	11.8	730	730	730	730	720	680	680	680	3.1	3.1	3.1	3.1	3.1	2.9	2.9	2.9			
4	43	Prelude Lake East Access to Tibbitt Lake	52.4	100	100	100	100	100	100	100	100	1.9	1.9	1.9	1.9	1.9	1.9	1.9	1.9			
		4 Collector	69.2									7.3	7.3	7.3	7.3	7.2	7.2	7.5	7.5			
5	1	Junction with Hwy #2 to Hay River Indian Village Access	2.5	560	560	560	530	520	510	520	520	0.5	0.5	0.5	0.5	0.5	0.5	0.5	0.5			
5	19	Hay River Indian Village Access to Birch Creek	24.8	150	170	170	160	160	170	170	170	1.4	1.6	1.6	1.5	1.4	1.5	1.6	1.6			
*5	48	Birch Creek to Junction with Hwy #6	33.1	170	170	170	170	170	170	170	170	1.5	1.5	1.5	1.5	1.5	1.5	1.5	1.5			
5	65	Junction with Hwy #6 to Salt River Village Access Road	187.8	70	80	80	70	70	70	80	70	4.5	5.3	5.5	5.0	4.8	5.0	5.1	4.9			
5	232	Salt River Village Access Road to Fort Smith Access (Trout St.)	13.5	130	130	130	120	120	120	110	110	0.6	0.6	0.6	0.6	0.6	0.6	0.5	0.5			
5	257	Fort Smith Access (Trout St.) to King St. Intersection	4.3	420	420	420	390	390	390	390	380	0.7	0.7	0.7	0.6	0.6	0.6	0.6	0.6			
		5 Collector	266									9.2	10.3	10.4	9.7	9.4	9.7	9.9	9.6			
6	30	Junction with Hwy #5 to Little Buffalo Village Road	68.3	80	80	80	80	80	80	80	80	1.9	1.9	2.0	2.0	1.9	2.0	1.9	1.9			
6	74	Little Buffalo Village Road to Fort Resolution	21.7	100	120	110	100	110	100	100	110	0.8	0.9	0.8	0.8	0.8	0.8	0.8	0.8			
		6 Collector	90									2.6	2.9	2.9	2.8	2.7	2.8	2.7	2.8			
7	35	BC Border to Fort Liard	37.6	140	120	120	120	120	120	120	120	1.9	1.6	1.6	1.6	1.6	1.6	1.6	1.6			
7	253	Fort Liard to Junction with Hwy #1	216.5	30	30	30	30	30	30	30	30	2.7	2.7	2.7	2.6	2.4	2.5	2.7	2.7			
		7 Collector	254.1									4.6	4.3	4.3	4.3	4.1	4.1	4.3	4.3			
8	34	Yukon Border to Fort McPherson Access	85.4	70	50	50	50	40	40	40	40	2.2	1.6	1.6	1.6	1.1	1.1	1.1	1.1			
8	90	Fort McPherson Access to Mackenzie River Ferry	57.2	90	100	80	80	80	90	90	90	1.9	2.1	1.7	1.8	1.8	1.8	1.8	1.6			
8	243	Mackenzie River Ferry to Airport Access Road	116.7	80	90	80	80	70	80	90	80	3.3	3.3	3.3	3.3	3.2	3.4	3.8	3.4			
8	259	Airport Access Road to Tuk Park Access Road	6.1	740	740	740	690	630	630	630	630	1.6	1.6	1.6	1.5	1.4	1.4	1.4	1.4			
8	268	Tuk Park Access Road to Inuvik	3.9	1370	1370	1270	1210	1120	1120	1150	1150	1.9	1.9	1.8	1.7	1.6	1.6	1.6	1.5			
		8 collector	269.3									11.0	10.6	10.0	9.9	9.0	9.3	9.8	9.1			
		Total Collector	1311.5									44.1	45.4	43.5	43.1	41.2	41.2	41.3	40.6			
		Total Vehicle Kilometres Travelled										129.6	121.4	116.3	115.3	108.2	106.2	105.2	104.7			

Note: * denotes counter has been taken out of service

Percent increase from 1998 to 1999 = 0.5% (Arterial increase = -0.2%; Collector increase = 1.6%)
 Percent increase from 1999 to 2000 = 1% (Arterial increase = 1.7%; Collector increase = -0.2%)
 Percent increase from 2000 to 2001 = 1.9% (Arterial increase = 3.1%; Collector increase = -0.1%)
 Percent increase from 2001 to 2002 = 6.5% (Arterial increase = 7.6%; Collector increase = 4.8%)
 Percent increase from 2002 to 2003 = 0.9% (Arterial increase = 0.9%; Collector increase = 1%)
 Percent increase from 2003 to 2005 = 4.3% (Arterial increase = 4.3%; Collector increase = 4.3%)
 Percent increase from 2005 to 2006 = 6.8% (Arterial increase = 12.7%; Collector increase = -3%)

Average annual percent increase from 1998 to 2006 = 3% (Arterial increase = 4.2%; Collector increase = 1.1%)

Vehicle Kilometres Travelled (VKT) is a unit for measuring the amount of traffic on a road. It is calculated by multiplying the AADT by the length of the road. I.E. (number of vehicles)(number of kilometres assumed driven)=vehicle kilometres travelled. VKT indicates usage of a road and is typically used to calculate collision rates.

Figure 4
Estimated Vehicle Kilometres Travelled on Northwest Territories Highways

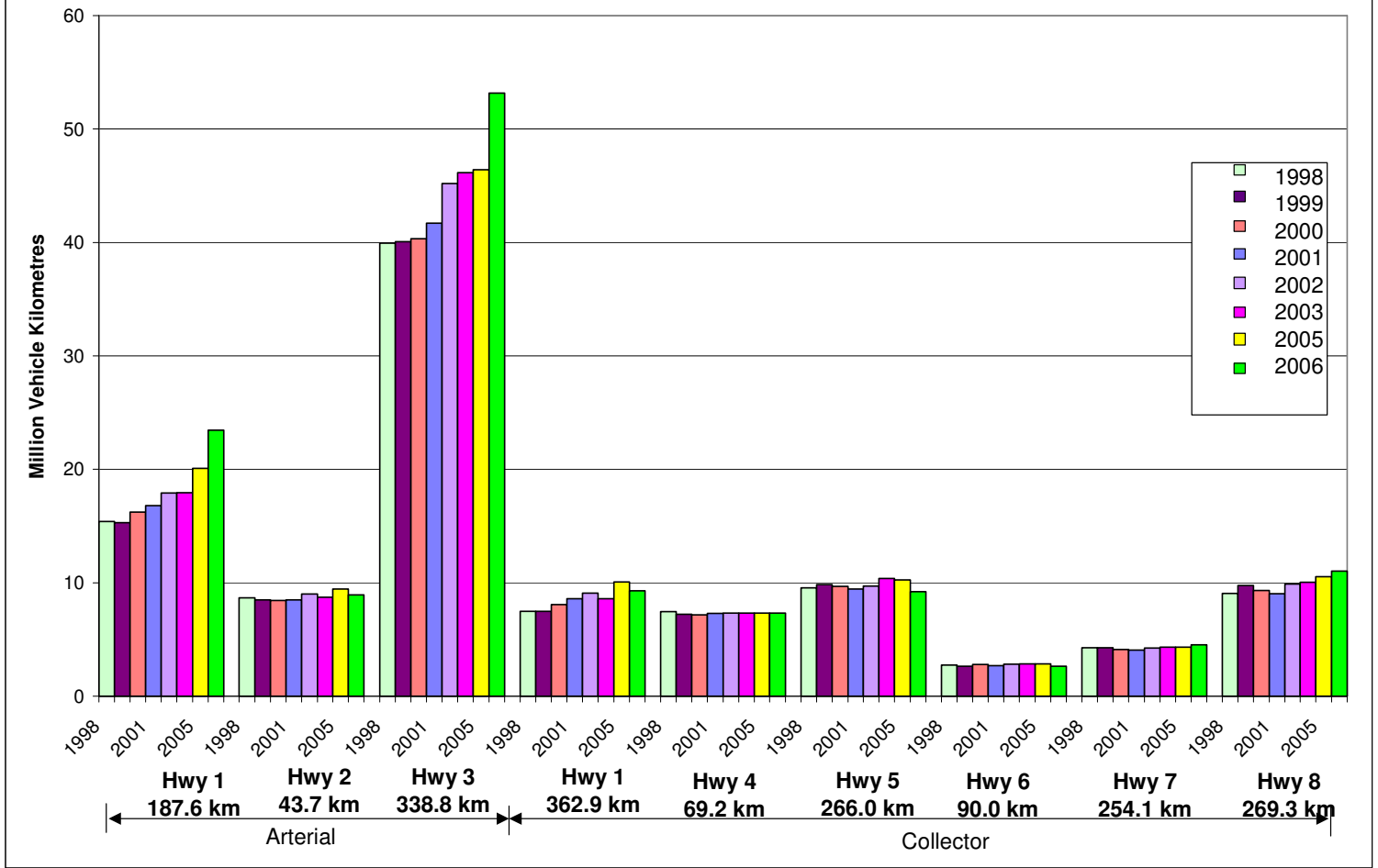
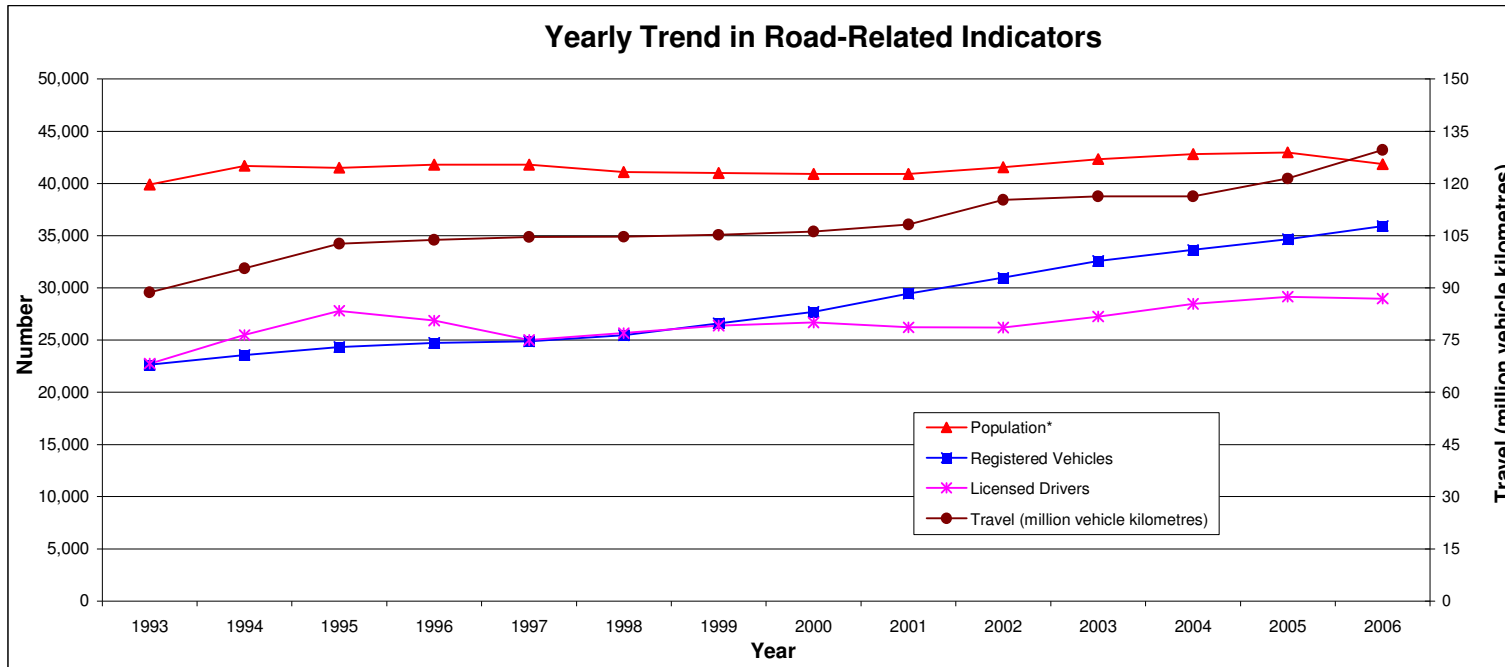


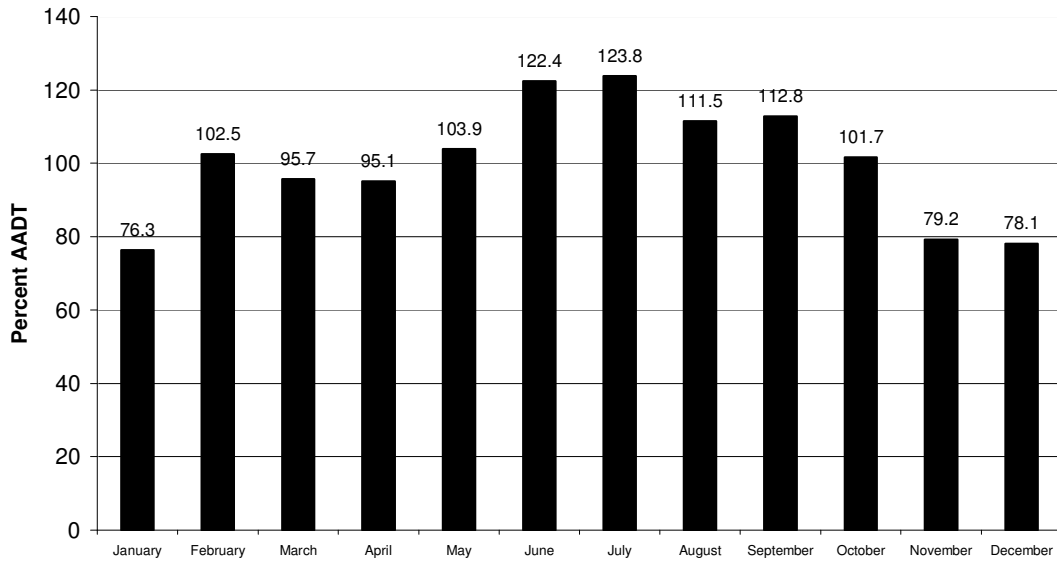
Figure 5



Indicators	1993	1994	1995	1996	1997	1998	1999	2000	2001	2002	2003	2004	2005	2006
Population*	39,900	41,700	41,500	41,800	41,800	41,100	41,000	40,900	40,900	41,549	42,321	42,810	42,982	41,861
Registered Vehicles	22,631	23,575	24,323	24,717	24,884	25,470	26,599	27,703	29,449	30,969	32,567	33,642	34,669	35,938
Licensed Drivers	22,742	25,471	27,794	26,853	24,997	25,655	26,371	26,673	26,211	26,186	27,260	28,461	29,166	28,974
Travel (million vehicle kilometres)	88.7	95.6	102.7	103.8	104.6	104.7	105.2	106.2	108.2	115.3	116.3	116.3	121.4	129.6

*Source: Northwest Territories Stats Bureau

Figure 6
Distribution of Monthly Traffic
Typical Near Urban Highway
(Hwy 3, Km 338)



Typical Rural Highway
(Hwy 5, Km 65)

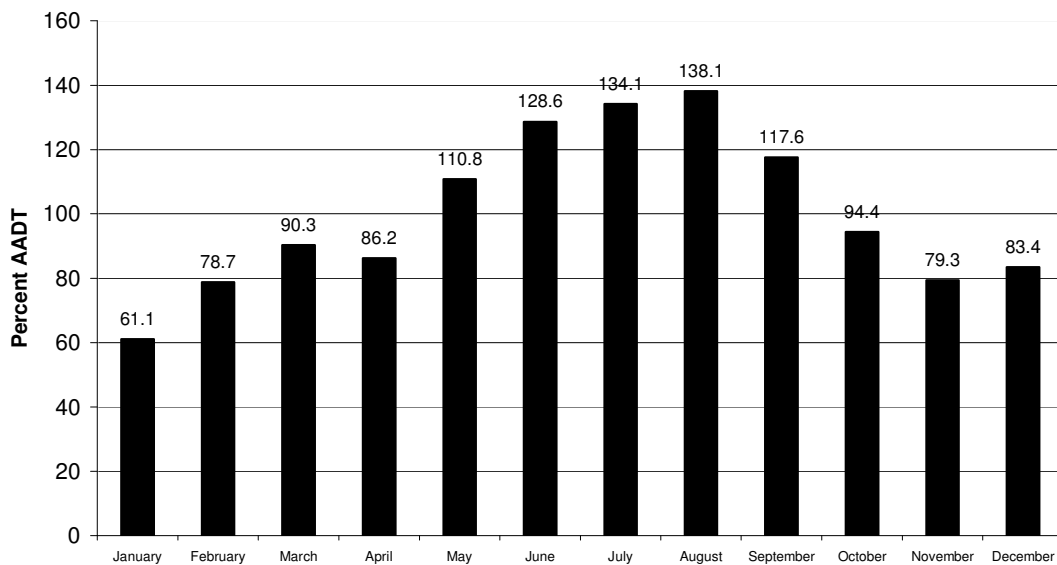
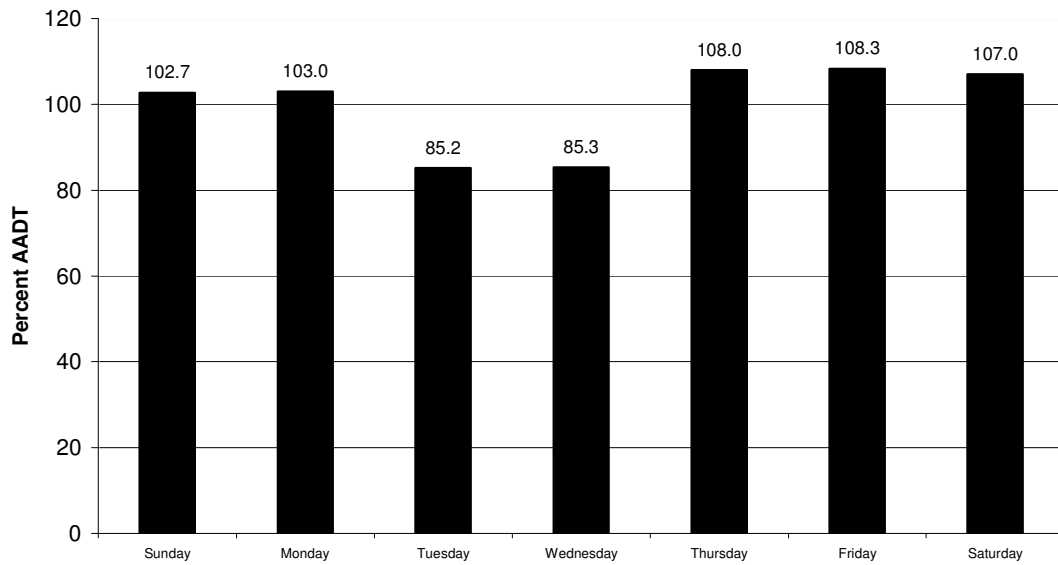


Figure 7
Distribution of Daily Traffic
Typical Near Urban Highway
(Hwy 3, Km 338)



Typical Rural Highway
(Hwy 5, Km 65)

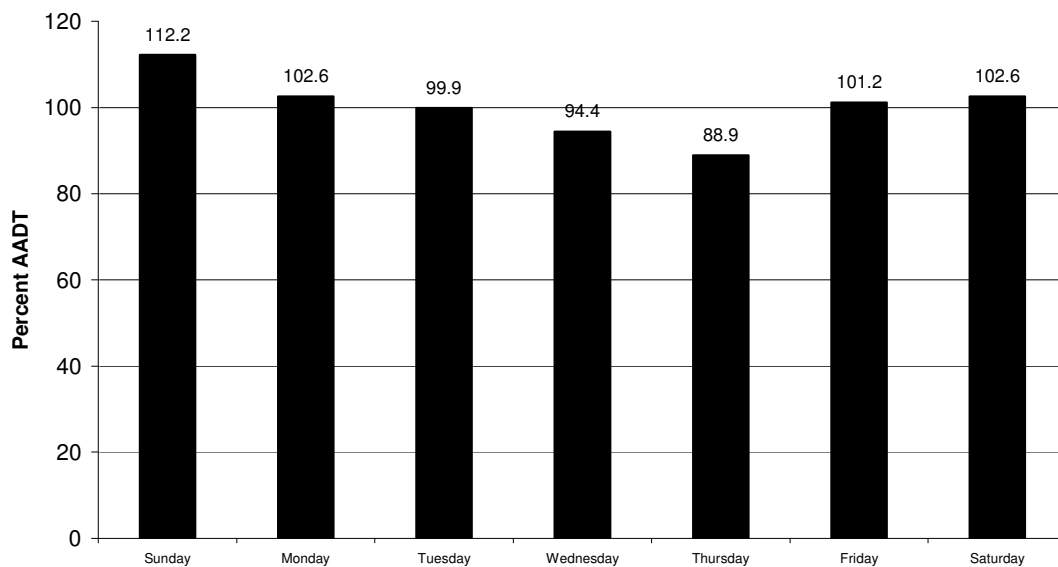
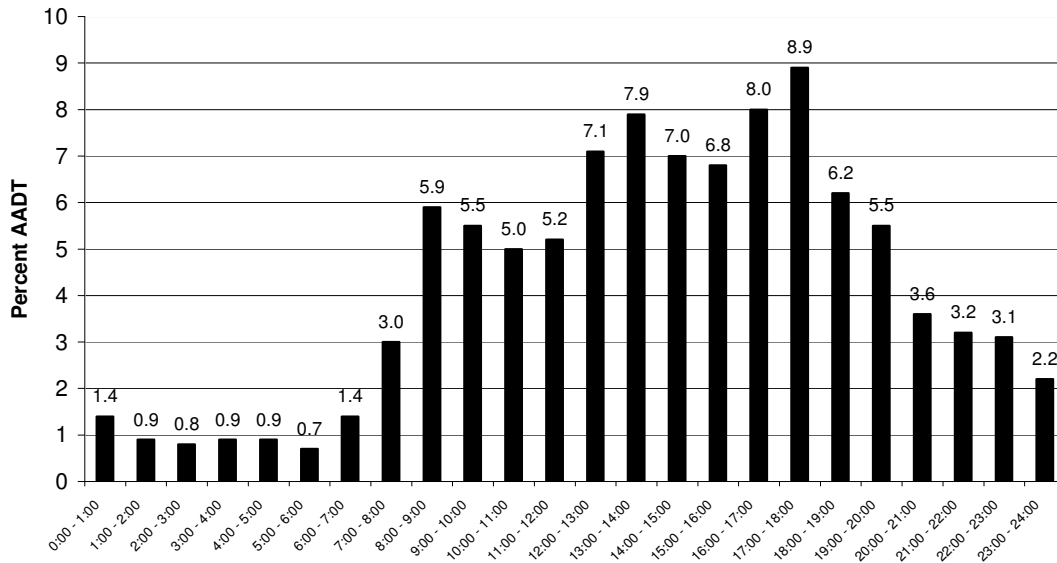


Figure 8
Distribution of Hourly Traffic
Typical Near Urban Highway
(Hwy 3, Km 338)



Typical Rural Highway
(Hwy 5, Km 65)

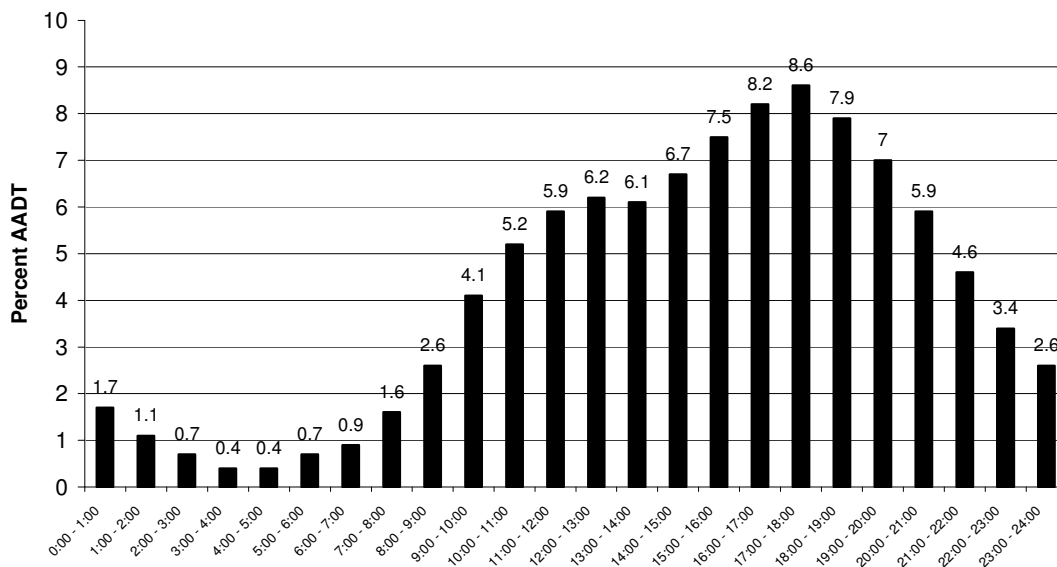


Figure 9
Average Daily Traffic on Highway Ferries

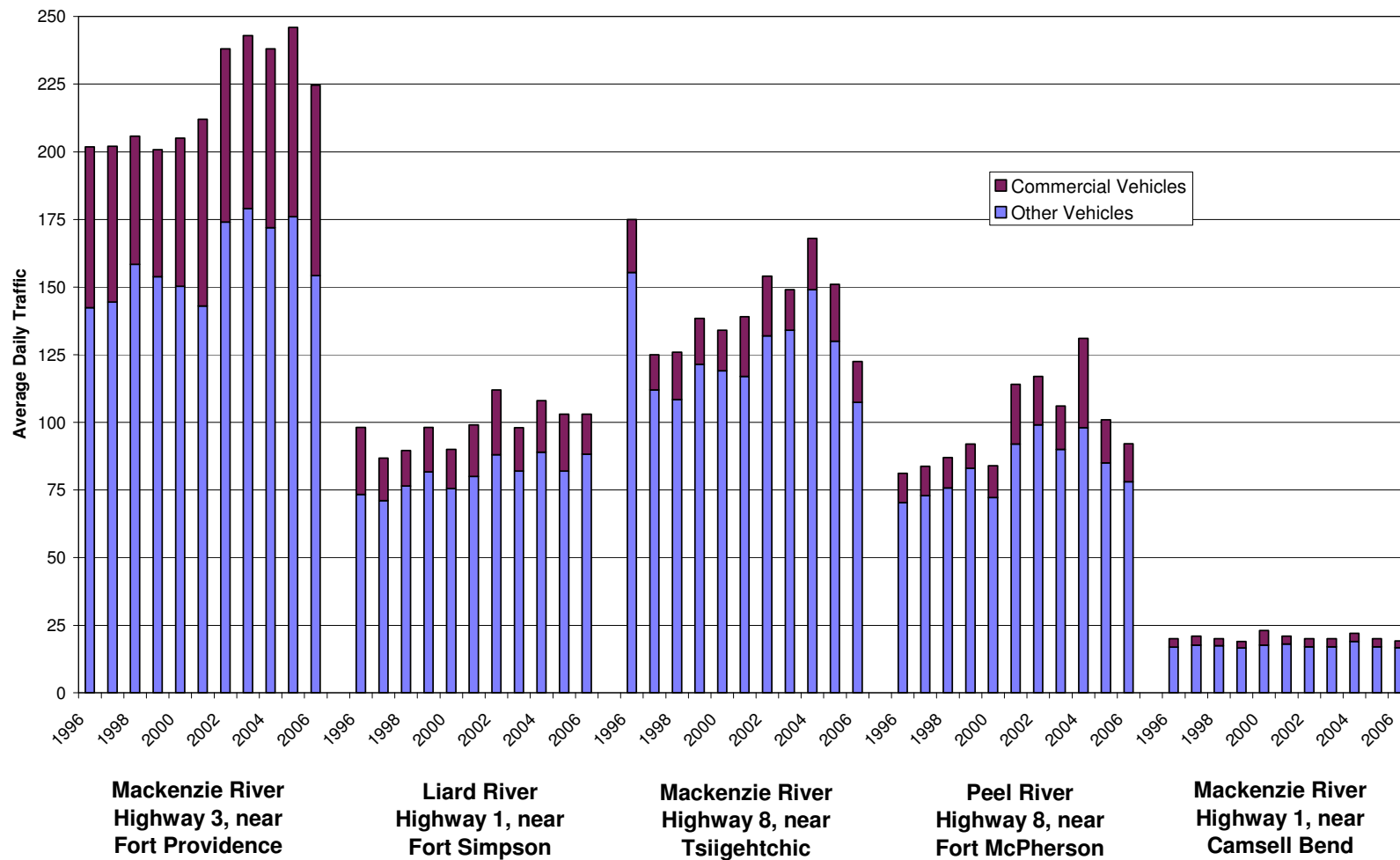


Table 9 Average Daily Traffic on Highway Ferries

Ferry Crossing	Location	Ferry	Vehicle Type	Year										
				2006	2005	2004	2003	2002	2001	2000	1999	1998	1997	1996
Dory Point	Highway 3, near Fort Providence	M.V. Merv Hardie	Commercial Vehicles	70	70	66	64	64	69	55	47	47	58	59
			Light Vehicles	138	159	154	159	155	130	134	136	141	130	129
			Trailers Towed	17	17	18	20	19	13	17	18	17	15	14
			Total	225	246	238	243	238	212	205	201	206	202	202
Liard River	Highway 1, near Fort Simpson	M.V. Lafferty	Commercial Vehicles	15	21	19	16	24	19	14	16	13	16	25
			Light Vehicles	81	76	82	76	81	75	70	76	72	66	68
			Trailers Towed	7	6	7	6	7	5	6	6	5	5	6
			Total	103	103	108	98	112	99	90	98	90	87	98
Mackenzie River	Highway 8, near Tsiigehtchic	M.V. Louis Cardinal	Commercial Vehicles	15	21	19	15	22	22	15	17	18	13	20
			Light Vehicles	99	119	135	127	119	105	106	106	93	97	139
			Trailers Towed	8	11	14	7	13	12	13	15	15	15	17
			Total	122	151	168	149	154	139	134	138	126	125	175
Peel River	Highway 8, near Fort McPherson	C.F. Abraham Francis	Commercial Vehicles	14	16	33	16	18	22	12	9	11	11	11
			Light Vehicles	71	79	90	81	92	82	64	71	64	65	60
			Trailers Towed	7	6	8	9	7	10	8	12	12	8	11
			Total	92	101	131	106	117	114	84	92	87	84	81
Mackenzie River	Highway 1, near Camsell Bend	M.V. Johnny Berens	Commercial Vehicles	2	3	3	3	3	3	6	2	3	3	3
			Light Vehicles	16	16	18	16	16	17	17	16	17	17	16
			Trailers Towed	1	1	1	1	1	1	1	1	1	0	1
			Total	19	20	22	20	20	21	23	19	20	21	20

Table 10 Vehicle Classification Data at Dory Point Ferry (Highway 3 near Fort Providence, M.V. Merv Hardie)

Operating Season Open	Close	Month	Total Traffic	Average Daily Traffic	Percent of Total							Total Commercial	Number of Passengers		
					Light Vehicles	Trailers Towed	Truck Single Unit	Truck Semi Trailer	Over size	Bus	Other				
7-May-06	22-Jan-07	May-06	5,177	207	65.25	8.33	2.07	22.37	0.00	0.71	1.27	26.42	8,845		
		Jun-06	9,375	313	66.51	11.32	2.35	17.38	0.09	0.67	1.70	22.18	17,150		
		Jul-06	10,265	331	69.03	9.64	1.84	17.88	0.02	0.48	1.11	21.32	18,604		
		Aug-06	9,990	322	67.66	9.39	2.37	18.85	0.07	0.64	1.02	22.95	18,507		
		Sep-06	7,808	260	67.73	6.66	2.66	21.30	0.03	0.72	0.91	25.61	13,986		
		Oct-06	6,260	202	65.69	3.02	2.78	26.90	0.06	0.81	0.73	31.29	10,709		
		Nov-06	4,374	146	51.30	2.01	3.73	41.59	0.05	0.94	0.39	46.68	6,728		
		Dec-06	2,980	96	18.72	2.32	5.40	71.17	0.07	1.24	1.07	78.96	3,641		
		Jan-07	2,792	127	4.58	0.82	7.31	85.35	0.61	0.68	0.64	94.59	3,123		
		Total	59,021	227	60.64	7.30	2.82	27.41	0.07	0.71	1.06	32.06	101,293		
		12-May-05	2-Feb-06	May-05	4,552	228	68.32	5.84	2.24	21.13	0.04	0.81	1.60	25.83	8,349
				Jun-05	9,545	318	70.07	10.33	2.54	14.57	0.04	0.58	1.88	19.60	18,123
Jul-05	11,184			361	71.49	10.16	1.78	14.51	0.05	0.72	1.29	18.35	23,048		
Aug-05	10,235			330	71.00	8.90	2.28	15.92	0.00	0.48	1.43	20.10	19,495		
Sep-05	7,939			265	70.45	6.26	2.48	18.98	0.05	0.59	1.18	23.29	14,209		
Oct-05	6,526			211	67.13	4.34	2.87	23.11	0.02	0.95	1.59	28.53	11,763		
Nov-05	5,729			191	54.22	2.18	3.82	37.39	0.19	1.05	1.15	43.60	9,252		
Dec-05	4,811			155	56.43	3.28	3.28	34.13	0.19	1.06	1.62	40.28	8,750		
Jan-06	4,730			153	32.58	1.86	3.70	59.13	0.21	0.89	1.63	65.56	6,777		
Feb-06	396			198	1.01	0.76	3.03	92.42	0.00	2.27	0.51	98.23	502		
Total	65,647			246	64.59	6.78	2.63	23.71	0.07	0.75	1.47	28.63	120,268		
17-May-04	6-Jan-05			May-04	4,060	271	67.46	5.59	2.04	22.91	0.07	0.76	1.16	26.95	7,469
		Jun-04	8,980	299	66.97	11.66	2.63	16.48	0.06	0.72	1.48	21.37	20,432		
		Jul-04	10,576	341	68.97	11.42	1.68	15.98	0.09	0.60	1.27	19.61	21,528		
		Aug-04	10,863	350	70.04	8.43	3.31	16.90	0.03	0.45	0.84	21.53	20,196		
		Sep-04	7,894	263	67.20	5.28	2.89	22.54	0.06	0.65	1.38	27.51	12,665		
		Oct-04	6,694	216	65.58	3.73	2.66	25.84	0.16	1.11	0.91	30.68	11,573		
		Nov-04	4,708	157	53.48	2.85	3.04	38.28	0.04	1.34	0.98	43.67	7,563		
		Dec-04	1,892	61	13.64	1.43	4.28	75.42	0.32	2.11	2.80	84.94	2,530		
		Jan-05	301	50	6.31	1.00	3.65	82.06	1.00	1.99	3.99	92.69	421		
		Total	55,968	238	64.58	7.56	2.68	23.09	0.08	0.79	1.23	27.86	104,377		
		17-May-03	9-Jan-04	Total	57,720	243	65.40	8.45	2.23	21.87	0.10	0.71	1.25	26.16	109,721
		22-May-02	27-Jan-03	Total	59,728	238	65.17	7.98	2.28	22.68	0.13	0.70	1.06	26.85	111,535
12-May-01	4-Feb-02	Total	56,766	212	61.1	6.4	2.3	27.7	0.6	0.8	1.2	32.6	115,370		
9-May-00	15-Jan-01	Total	51,753	205	65.1	8.2	2.1	22.3	0.0	0.8	1.5	26.7	99,729		
9-May-99	21-Jan-00	Total	51,753	201	67.8	8.7	2.0	19.2	0.1	0.8	1.3	23.4	102,541		
7-May-98	13-Jan-99	Total	51,820	206	51.9	5.5	1.8	14.1	0.0	0.7	1.0	17.6	100,691		
14-May-97	29-Jan-98	Total	52,660	202	64.3	7.2	2.5	24.0	0.1	0.8	1.1	28.5	100,851		
15-May-96	14-Jan-97	Total	49,909	202	63.7	6.8	3.1	24.2	0.1	0.6	1.4	29.4	96,779		
13-May-95	12-Jan-96	Total	50,440	206	65.0	6.6	4.1	22.4	0.3	0.7	0.8	28.4	96,699		
11-May-94	10-Jan-95	Total	45,905	187	63.5	6.3	3.0	25.2	0.1	0.8	1.1	30.2	90,852		
6-May-93	14-Jan-94	Total	45,428	179	65.4	5.3	3.9	23.5	0.1	1.0	0.8	29.2	88,841		

Note: To calculate the monthly average daily traffic; the total monthly volume is divided by the number of days in the month, regardless of whether or not the ferry operated everyday in the month, except for the beginning and ending months where the actual number of days is used.

Table 11 Vehicle Classification Data at Liard River Ferry (Highway 1 near Fort Simpson, M.V. Lafferty)

Operating Season	Month	Total Traffic	Average Daily Traffic	Percent of Total								Total Commercial	Number of Passengers
				Light Vehicles	Trailers Towed	Truck Single Unit	Truck Semi Trailer	Over size	Bus	Other			
17-May-06 2-Nov-06	May-06	1,283	86	84.65	5.30	3.20	2.81	0.39	0.31	3.35	10.05	2,318	
	Jun-06	3,106	104	77.56	6.47	5.12	6.54	0.61	0.55	3.16	15.97	6,312	
	Jul-06	3,509	113	75.04	7.21	3.19	10.32	1.62	0.37	2.25	17.75	7,613	
	Aug-06	3,510	113	75.36	9.03	3.16	8.75	1.34	0.20	2.17	15.61	7,321	
	Sep-06	3,455	115	77.16	6.08	3.24	9.99	1.68	0.17	1.68	16.76	6,966	
	Oct-06	2,726	88	77.81	3.78	4.55	10.97	0.33	0.33	2.24	18.42	5,825	
	Nov-06	252	126	77.78	1.59	8.33	5.56	0.00	0.00	6.75	20.63	468	
	Total	17,841	106	77.10	6.48	3.81	8.78	1.09	0.31	2.42	16.42	36,823	
11-May-05 5-Nov-05	May-05	1,931	92	84.77	4.09	3.26	2.80	0.00	0.21	4.87	11.13	4,068	
	Jun-05	3,514	117	70.15	7.17	3.64	15.57	0.09	0.40	2.99	22.68	7,328	
	Jul-05	3,721	120	67.40	7.09	4.11	19.00	0.08	0.43	1.88	25.50	7,757	
	Aug-05	3,799	123	72.78	7.79	4.08	12.66	0.26	0.13	2.29	19.43	7,595	
	Sep-05	2,963	99	75.90	5.33	4.89	11.47	0.03	0.24	2.13	18.76	5,815	
	Oct-05	2,130	69	74.98	3.52	7.14	11.55	0.28	0.61	1.92	21.50	4,327	
	Nov-05	373	75	85.52	2.68	4.83	4.56	0.00	0.00	2.41	11.80	673	
	Total	18,431	103	73.46	6.15	4.42	12.98	0.12	0.32	2.54	20.38	37,563	
16-May-04 26-Oct-04	May-04	1,451	97	82.84	4.00	3.65	3.03	0.07	0.00	6.41	13.16	2,949	
	Jun-04	3,225	108	73.83	6.42	2.95	12.68	0.16	0.37	3.60	19.75	6,551	
	Jul-04	3,870	125	74.34	6.46	4.39	9.87	0.36	0.21	4.37	19.20	8,211	
	Aug-04	3,774	122	75.46	7.68	3.95	8.37	0.32	0.29	3.92	16.85	8,125	
	Sep-04	3,249	108	75.78	5.94	3.51	13.17	0.52	0.06	1.02	18.28	6,455	
	Oct-04	2,095	81	80.14	2.58	4.96	10.21	0.38	0.24	1.48	17.28	4,045	
Total	17,664	108	76.14	5.96	3.88	10.15	0.32	0.22	3.34	17.91	36,336		
13-May-03 4-Nov-03	Total	17,193	98	77.18	6.67	4.25	8.95	0.22	0.28	2.45	16.16	35,679	
22-May-02 6-Nov-02	Total	18,976	112	72.23	6.09	4.83	13.67	0.08	0.40	2.70	21.68	37,830	
15-May-01 3-Nov-01	Total	17,146	99	75.7	5.7	5.3	9.4	0.3	0.5	3.1	18.7	34,612	
9-May-00 3-Nov-00	Total	16,048	90	77.2	6.8	4.4	7.7	0.2	0.6	3.1	16.0	33,040	
10-May-99 3-Nov-99	Total	17,376	98	77.5	5.8	4.3	8.7	0.2	0.9	2.5	16.7	34,907	
6-May-98 10-Nov-98	Total	17,022	90	79.4	5.8	4.2	7.4	0	0.8	2.3	14.8	34,808	
15-May-97 12-Nov-97	Total	14,885	87	74.7	6.1	5.1	10.7	0.1	0.9	2.4	19.2	30,666	
8-May-96 26-Oct-96	Total	16,932	98	69	5.8	5.6	16	0.2	0.7	2.8	25.3	35,472	
9-May-95 27-Oct-95	Total	16,646	97	71.6	6.5	5.1	14.4	0.2	0.2	2	21.9	34,734	
6-May-94 6-Nov-94	Total	17,869	97	68.8	5.9	5.6	17.1	0.2	0.2	2.2	25.3	36,163	
12-May-93 17-Nov-93	Total	14,053	74	71.6	10.5	6.5	9.2	0.1	0.3	1.8	17.9	29,516	

Table 12 Vehicle Classification Data at Mackenzie River Ferry (Highway 8 near Tsiigehtchic, M.V. Louis Cardinal)

Operating Season	Month	Total Traffic	Average Daily Traffic	Percent of Total								Total Commercial	Number of Passengers
				Light Vehicles	Trailers Towed	Truck Single Unit	Truck Semi Trailer	Over size	Bus	Other			
31-May-06	29-Oct-06	May-06	23	23	95.65	0.00	0.00	0.00	0.00	0.00	4.35	4.35	39
		Jun-06	3,667	122	80.31	8.34	2.51	7.04	0.11	0.08	1.61	11.34	7,182
		Jul-06	4,742	153	78.72	8.29	2.45	5.78	0.30	0.32	4.15	12.99	9,604
		Aug-06	4,548	147	80.74	8.49	2.92	6.13	0.15	0.11	1.45	10.77	9,270
		Sep-06	3,305	110	78.88	3.48	3.15	13.01	0.21	0.06	1.21	17.64	6,774
		Oct-06	2,598	90	77.83	0.27	6.47	14.13	0.31	0.00	1.00	21.90	4,872
		Total	18,883	125	79.44	6.39	3.25	8.52	0.21	0.13	2.06	14.17	37,741
27-May-05	29-Oct-05	May-05	368	92	78.80	4.08	9.51	2.72	0.00	0.00	4.89	17.12	648
		Jun-05	4,851	162	78.46	8.25	3.22	7.07	0.08	0.02	2.91	13.30	8,863
		Jul-05	5,703	184	77.80	10.45	3.09	6.33	0.28	0.28	1.77	11.75	11,778
		Aug-05	5,815	188	78.07	7.62	5.19	6.72	0.22	0.05	2.12	14.31	12,280
		Sep-05	3,983	133	80.99	2.86	5.45	9.19	0.05	0.00	1.46	16.14	7,749
		Oct-05	2,536	91	81.98	0.95	4.10	12.03	0.28	0.00	0.67	17.07	4,912
		Total	23,256	151	79.02	6.85	4.26	7.64	0.18	0.09	1.97	14.13	46,230
4-Jun-04	20-Oct-04	Jun-04	4,665	173	77.64	13.40	2.66	5.04	0.06	0.02	1.18	8.96	8,548
		Jul-04	6,298	203	78.09	12.00	1.79	6.35	0.11	0.16	1.49	9.91	11,095
		Aug-04	6,090	196	83.63	6.58	2.28	5.85	0.43	0.07	1.17	9.79	10,478
		Sep-04	4,261	142	80.66	2.58	3.66	12.41	0.28	0.07	0.33	16.76	6,789
		Oct-04	2,260	108	81.68	1.55	3.36	12.17	0.13	0.04	1.06	16.77	3,732
Total	23,574	168	80.24	8.17	2.58	7.61	0.22	0.08	1.09	11.58	40,642		
5-Jun-03	1-Nov-03	Total	22,311	149	85.05	4.63	2.25	7.17	0.12	0.16	0.62	10.32	48,269
5-Jun-02	19-Oct-02	Total	21,130	154	77.24	8.27	3.86	8.11	0.59	0.13	1.80	14.49	46,844
5-Jun-01	26-Oct-01	Total	19,827	139	75.2	8.9	2.9	11.3	0.3	0.1	1.3	15.9	42,172
5-Jun-00	23-Oct-00	Total	18,795	134	78.7	9.8	2.5	6.9	0.1	0.1	1.8	11.5	39,917
1-Jun-99	16-Oct-99	Total	19,028	138	76.5	11.0	3.3	7.2	0.1	0.2	1.7	12.5	41,066
26-May-98	24-Oct-98	Total	19,149	126	74.1	11.9	3.8	4.8	0.0	0.3	5.1	13.9	43,258
4-Jun-97	18-Oct-97	Total	16,894	125	77.2	12.3	2.5	4.9	0.1	0.7	2.4	10.5	38,471
4-Jun-96	16-Oct-96	Total	23,570	175	79.3	9.5	2.9	5.9	0.5	0.5	1.4	11.2	45,636
24-May-95	24-Oct-95	Total	24,620	160	81.9	8.4	2.1	5.3	0.3	0.5	1.5	9.7	50,398
30-May-94	30-Oct-94	Total	27,052	176	82.9	5.9	3	4.6	0.3	0.5	2.8	11.2	55,606
4-Jun-93	28-Oct-93	Total	25,132	171	75.3	12.1	2.3	5.7	0.7	0.3	3.5	12.6	52,585

Table 13 Vehicle Classification Data at Peel River Ferry (Highway 8 near Fort McPherson, C.F. Abraham Francis)

Operating Season	Month	Total Traffic	Average Daily Traffic	Percent of Total								Total Commercial	Number of Passengers
				Light Vehicles	Trailers Towed	Truck Single Unit	Truck Semi Trailer	Over size	Bus	Other			
2-Jun-06	26-Oct-06	Jun-06	1,942	67	65.45	12.20	2.47	12.56	0.51	0.26	6.54	22.35	3,806
		Jul-06	3,509	113	70.25	10.26	2.62	9.72	0.00	0.51	6.64	19.49	7,780
		Aug-06	4,688	151	84.32	6.44	1.00	5.84	0.04	0.15	2.20	9.24	10,223
		Sep-06	2,516	84	72.30	4.25	2.50	18.04	0.04	0.08	2.78	23.45	5,001
		Oct-06	1,352	52	64.13	0.44	2.59	31.07	0.15	0.00	1.63	35.43	2,222
		Total	14,007	96	74.07	7.22	2.03	12.37	0.11	0.23	3.96	18.70	29,032
25-May-05	24-Oct-05	May-05	242	35	80.99	5.79	2.07	5.79	0.00	0.00	5.37	13.22	509
		Jun-05	2,696	90	74.37	7.23	0.70	11.94	0.45	0.04	5.27	18.40	5,153
		Jul-05	5,181	167	80.04	6.93	2.93	7.62	0.27	0.25	1.95	13.03	11,653
		Aug-05	3,688	119	80.88	6.45	1.79	7.35	0.52	0.11	2.90	12.66	7,984
		Sep-05	2,413	80	78.37	2.78	1.82	14.71	0.75	0.08	1.49	18.86	4,883
		Oct-05	1,226	51	71.86	1.71	2.37	19.41	0.08	0.08	4.49	26.43	2,082
Total	15,335	101	78.36	5.79	2.04	10.33	0.41	0.14	2.94	15.86	32,264		
2-Jun-04	25-Oct-04	Jun-04	3,180	110	75.06	11.51	2.26	7.30	0.06	0.06	3.74	13.43	5,718
		Jul-04	5,406	174	70.59	7.51	2.09	6.84	0.26	0.24	12.47	21.90	10,245
		Aug-04	6,023	194	73.83	4.75	0.91	5.99	0.45	0.05	14.01	21.42	8,897
		Sep-04	3,230	108	59.41	2.32	0.80	15.26	0.12	0.06	22.01	38.27	4,498
		Oct-04	1,698	61	49.88	1.59	0.18	15.96	0.24	0.00	32.16	48.53	2,002
		Total	19,537	131	68.67	5.94	1.38	8.84	0.26	0.10	14.81	25.39	31,360
4-Jun-03	29-Oct-03	Total	15,715	106	76.46	8.63	1.24	10.38	0.53	0.39	2.37	14.91	32,233
27-May-02	25-Oct-02	Total	17,810	117	78.72	5.72	1.73	9.34	1.07	0.52	2.91	15.56	37,322
10-Jun-01	29-Oct-01	Total	16,114	114	71.8	8.6	3.1	14.4	0.3	0.4	1.4	19.6	31,498
6-Jun-00	26-Oct-00	Total	11,959	84	76.3	9.7	1.7	9.0	0.3	0.5	2.6	14.1	27,823
30-May-99	15-Oct-99	Total	12,713	92	76.8	13.4	0.8	5.6	0.5	0.5	2.4	9.8	28,066
25-May-98	21-Oct-98	Total	13,097	87	73.8	13.2	1.4	6.9	0.3	0.4	4.0	13.0	32,775
30-May-97	21-Oct-97	Total	11,738	84	77.0	9.7	1.6	7.4	0.1	0.5	3.7	13.3	27,454
3-Jun-96	19-Oct-96	Total	11,237	81	73.5	13.3	1.8	8.2	0.1	0.5	2.7	13.3	25,891
22-May-95	24-Oct-95	Total	13,247	85	72.4	14.6	1.1	8.7	0	0.4	2.7	13.0	31,485
27-May-94	29-Oct-94	Total	14,012	90	74.9	12.4	0.8	9.1	0.0	0.3	2.5	12.7	35,352
3-Jun-93	29-Oct-93	Total	14,561	98	77.6	9.9	0.8	8.8	0.2	0.6	2.2	12.6	38,078

Table 14 Vehicle Classification Data at Mackenzie River Ferry (Highway 1, road to Wrigley, near Camsell Bend, M.V. Jonny Berens)

Operating Season	Month	Total Traffic	Average Daily Traffic	Percent of Total								Total Commercial	Number of Passengers
				Light Vehicles	Trailers Towed	Truck Single Unit	Truck Semi Trailer	Over size	Bus	Other			
27-May-06	2-Nov-06	May-06	56	14	98.21	0.00	1.79	0.00	0.00	0.00	0.00	1.79	134
		Jun-06	581	19	61.79	2.24	25.99	2.93	1.55	0.69	4.82	35.97	1,191
		Jul-06	566	18	81.80	5.30	5.30	3.00	0.00	0.00	4.59	12.90	1,211
		Aug-06	667	22	85.31	5.25	4.50	2.25	0.00	0.60	2.10	9.45	1,536
		Sep-06	651	22	87.71	4.61	2.46	2.46	0.31	0.00	2.46	7.68	1,294
		Oct-06	620	20	79.03	4.84	5.32	6.61	1.61	0.00	2.58	16.13	1,117
		Nov-06	14	7	100.00	0.00	0.00	0.00	0.00	0.00	0.00	0.00	29
		Total	3,155	20	79.90	4.37	8.27	3.36	0.67	0.25	3.17	15.72	6,512
20-May-05	4-Nov-05	May-05	226	19	69.91	0.44	23.89	0.00	0.00	0.44	5.31	29.65	437
		Jun-05	493	16	81.74	3.65	5.27	3.85	0.00	1.01	4.46	14.60	1,036
		Jul-05	696	22	81.32	6.18	6.90	2.44	0.00	0.72	2.44	12.50	1,588
		Aug-05	660	21	86.06	6.21	3.48	1.52	0.00	0.30	2.42	7.73	1,409
		Sep-05	638	21	82.92	5.17	6.43	3.92	0.00	0.00	1.57	11.91	1,243
		Oct-05	533	17	82.55	2.63	5.63	6.94	0.00	0.00	2.25	14.82	993
		Nov-05	81	20	77.78	0.00	14.81	4.94	0.00	0.00	2.47	22.22	152
		Total	3,327	20	81.97	4.51	7.03	3.37	0.00	0.39	2.74	13.53	6,858
28-May-04	22-Oct-04	May-04	77	19	89.61	2.60	5.19	0.00	0.00	0.00	2.60	7.79	173
		Jun-04	503	17	87.28	1.19	9.54	0.40	0.00	0.00	1.59	11.53	1,125
		Jul-04	707	23	82.46	5.52	5.94	3.54	0.00	0.57	1.98	12.02	1,613
		Aug-04	686	22	85.71	4.96	5.83	2.04	0.00	0.00	1.46	9.33	1,493
		Sep-04	761	25	81.73	4.34	3.94	8.67	0.00	0.00	1.31	13.93	1,409
		Oct-04	508	23	79.53	3.35	6.10	8.27	0.00	0.00	2.76	17.13	857
Total	3,242	22	83.44	4.04	6.01	4.60	0.00	0.12	1.79	12.52	6,670		
30-May-03	31-Oct-03	Total	3,163	20	82.04	4.20	7.90	3.00	0.00	0.00	2.85	13.75	6,716
31-May-02	1-Nov-02	Total	3,106	20	79.65	5.54	6.89	3.86	0.35	0.13	3.57	14.81	6,402
22-May-01	29-Oct-01	Total	3,404	21	79.5	5.5	6.1	2.9	1.0	0.5	4.3	14.8	6,742
20-May-00	30-Oct-00	Total	3,786	23	72.9	3.3	3.9	3.3	0.3	0.2	16.2	23.8	7,593
21-May-99	16-Oct-99	Total	2,779	19	82.6	4.8	4.7	2.8	0.0	0.1	4.9	12.6	7,270
15-May-98	3-Nov-98	Total	3,384	20	83.9	3.2	4.6	4.4	0.3	0.1	3.4	12.9	8,959
18-May-97	27-Oct-97	Total	3,396	21	82.6	1.8	8.8	2.0	0.1	0.2	4.4	15.6	8,448
22-May-96	25-Oct-96	Total	3,161	20	80.0	4.5	4.9	5.2	0.2	0.1	5.2	15.5	6,926
17-May-95	16-Oct-95	Total	2,990	20	83.3	2.4	6.0	4.2	0.6	0.1	3.3	14.3	6,935
3-Jun-94	2-Nov-94	Total	2,978	19	82.2	1.7	5.4	6.7	0.6	0.3	3.1	16.1	6,712

Table 15 Vehicle Classification at the Enterprise Weigh Scale

Unit Type	2006												12 Month Total	% of Total
	Jan	Feb	Mar	Apr	May	Jun	Jul	Aug	Sep	Oct	Nov	Dec		
Single Axle	15	22	33	15	6	23	11	5	15	13	13	18	189	1.06
Tandem	82	79	67	33	47	90	32	55	116	70	67	54	792	4.45
4-Axle	0	5	11	20	0	1	0	0	3	2	2	0	44	0.25
5 Axle	387	561	812	206	209	245	165	188	351	312	231	210	3,877	21.77
6 Axle	428	703	994	197	147	238	163	202	221	223	187	163	3,866	21.71
A Train	119	158	204	119	181	224	143	165	192	195	154	134	1,988	11.16
B Train	42	156	149	4	2	1	3	3	4	4	4	37	409	2.30
C Train	0	22	14	3	0	2	0	0	0	0	0	0	41	0.23
Super B	776	1478	1657	208	104	225	184	274	384	390	485	402	6,567	36.88
Logging Truck	25	6	1	0	0	0	0	0	0	0	0	2	34	0.19
Total	1874	3190	3942	805	696	1049	701	892	1286	1209	1143	1020	17,807	100.00

Source: Enterprise Weigh Scale Database.

Unit Type	2005												12 Month Total	% of Total
	Jan	Feb	Mar	Apr	May	Jun	Jul	Aug	Sep	Oct	Nov	Dec		
Single Axle	40	49	33	19	17	23	54	23	7	12	26	6	309	1.63
Tandem	40	75	43	28	43	35	50	44	64	55	63	50	590	3.12
5 Axle	286	668	848	302	194	232	438	339	293	250	300	281	4431	23.42
6 Axle	375	716	1026	261	138	257	364	240	301	312	266	170	4426	23.40
A Train	97	118	134	125	112	171	179	136	169	136	152	131	1660	8.78
B Train	30	131	110	8	5	9	48	20	5	4	2	25	397	2.10
C Train	2	33	33	0	0	1	1	2	1	0	0	0	73	0.39
Super B	924	1573	1959	164	158	259	253	196	240	255	554	448	6983	36.92
Logging Truck	22	15	1	0	0	0	0	0	0	0	0	9	47	0.25
Total	1816	3378	4187	907	667	987	1387	1000	1080	1024	1363	1120	18,916	100.00

Unit Type	2004												12 Month Total	% of Total
	Jan	Feb	Mar	Apr	May	Jun	Jul	Aug	Sep	Oct	Nov	Dec		
Single Axle	19	21	26	11	5	19	12	7	56	14	7	13	210	1.25
Tandem	64	65	90	31	33	66	50	64	82	47	39	73	704	4.21
5 Axle	304	469	725	217	217	340	207	266	343	321	227	210	3846	22.98
6 Axle	280	480	688	126	101	258	182	315	287	193	157	155	3222	19.25
A Train	127	155	170	95	108	229	155	117	183	174	113	109	1735	10.37
B Train	47	112	131	6	4	10	9	3	8	16	7	6	359	2.15
C Train	6	29	40	0	0	2	0	0	0	0	0	0	77	0.46
Super B	688	1517	1985	110	114	301	229	274	399	337	320	272	6546	39.11
Logging Truck	16	18	3	0	0	0	0	0	0	0	0	0	37	0.22
Total	1551	2866	3858	596	582	1225	844	1046	1358	1102	870	838	16,736	100.00

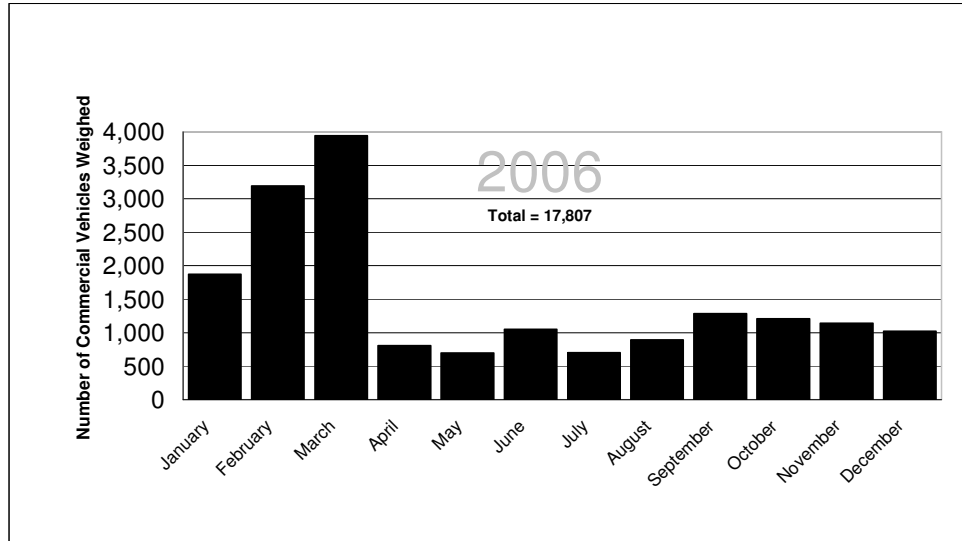
Unit Type	2003												12 Month Total	% of Total
	Jan	Feb	Mar	Apr	May	Jun	Jul	Aug	Sep	Oct	Nov	Dec		
Single Axle	13	12	24	8	4	3	16	7	12	11	3	6	119	0.75
Tandem	38	47	74	17	18	24	80	70	35	36	23	29	491	3.09
5 Axle	218	497	687	234	207	180	425	198	260	361	207	177	3651	22.96
6 Axle	183	541	670	152	185	141	214	163	281	262	190	118	3100	19.49
A Train	100	109	129	98	155	133	159	129	138	163	136	143	1592	10.01
B Train	17	134	173	7	57	12	22	14	5	26	4	12	483	3.04
C Train	5	51	99	4	2	1	0	0	0	0	2	4	168	1.06
Super B	655	1397	2027	155	110	199	253	148	222	284	411	436	6297	39.60
Logging Truck					1								1	0.01
Total	1229	2788	3883	675	739	693	1169	729	953	1143	976	925	15,902	100.00

Unit Type	2002												12 Month Total	% of Total
	Jan	Feb	Mar	Apr	May	Jun	Jul	Aug	Sep	Oct	Nov	Dec		
Single Axle	12	27	18	12	9	9	6	8	14	9	7	10	141	0.88
Tandem	62	68	71	91	2	9	1	1	0	2	1	1	309	1.94
5 Axle	230	505	546	178	132	338	257	226	352	353	236	189	3542	22.21
6 Axle	212	514	579	200	65	249	224	231	249	248	246	158	3175	19.91
A Train	106	117	100	114	72	184	161	152	126	151	119	93	1495	9.38
B Train	101	209	195	25	10	20	13	20	25	38	12	10	678	4.25
C Train	17	69	73	9	1	7	9	0	0	1	0	1	187	1.17
Super B	703	1397	1767	259	42	295	306	207	276	321	506	339	6418	40.25
Logging Truck	-	-	-	-	-	0	0	0	0	0	0	0	0	0.00
Total	1443	2906	3349	888	333	1111	977	845	1042	1123	1127	801	15,945	100.00

Unit Type	2001												12 Month Total	% of Total
	Jan	Feb	Mar	Apr	May	Jun	Jul	Aug	Sep	Oct	Nov	Dec		
Single Axle	16	12	16	3	5	4	2	12	6	2	1	1	80	0.55
Tandem	15	23	26	11	18	10	18	27	102	10	54	2	316	2.17
5 Axle	427	466	699	262	191	217	186	181	170	203	204	42	3248	22.29
6 Axle	320	516	679	210	113	163	157	226	172	169	176	38	2939	20.17
A Train	76	97	130	72	107	134	139	117	114	114	95	25	1220	8.37
B Train	170	171	244	103	14	13	26	21	18	26	11	7	824	5.65
C Train	2	33	41	28	0	0	0	0	0	0	0	0	104	0.71
Super B	855	912	1575	568	118	333	202	183	260	315	397	125	5843	40.09
Logging Truck	0	0	0	0	0	0	0	0	0	0	0	0	0	0.00
Total	1881	2230	3410	1257	566	874	730	767	842	839	938	240	14,574	100.00

Note: In December 2001, it is estimated that only one-third of the data was collected due to increased weigh scale closures.

**Figure 10
Commercial Vehicles Weighed
at the Enterprise Weigh Scale**



Total Vehicles Weighed

Year	January	February	March	April	May	June	July	August	September	October	November	December	Total
2006	1,874	3,190	3,942	805	696	1,049	701	892	1,286	1,209	1,143	1,020	17,807
2005	1,816	3,378	4,187	907	667	987	1,387	1,000	1,080	1,024	1,363	1,120	18,916
2004	1,551	2,866	3,858	596	582	1,225	844	1,046	1,358	1,102	870	838	16,736
2003	1,229	2,788	3,883	675	739	693	1,169	729	953	1,144	976	924	15,902
2002	1,448	2,913	3,358	892	336	1,114	982	854	1,054	1,123	1,128	803	16,005
2001	1,881	2,230	3,410	1,257	566	874	730	767	842	839	938	240	14,574
2000	1,051	1,862	2,266	522	501	830	720	703	681	798	795	762	11,491
1999	991	1,493	1,697	436	523	909	834	633	758	953	515	753	10,495
1998	1,107	2,258	2,711	684	1,059	1,139	1,765	1,951	1,279	929	679	662	16,223
1997	1,240	2,365	2,431	762	764	1,061	1,060	855	982	1,974	825	828	15,147
1996	1,627	2,585	1,722	767	855	1,255	1,116	1,049	1,149	1,081	1,136	1,003	15,345
1995	1,404	2,494	2,599	1,050	1,025	1,336	1,581	1,281	1,227	1,231	1,028	1,243	17,499

Note: (1) A commercial vehicle is any vehicle with a GVW over 4500 kg.
(2) In December 2001, it is estimated that only one-third of the data was collected due to weigh scale closures.

**Figure 11
Commercial Vehicle Activity
at the Enterprise Weigh Scale**

Overweight Permits Issued

Year	January	February	March	April	May	June	July	August	September	October	November	December	Total
2006	84	78	193	53	0	2	51	50	88	71	68	40	778
2005	83	120	271	64	14	65	77	59	97	121	93	29	1,093
2004	116	50	176	46	0	34	57	68	62	77	76	27	769
2003	61	96	313	33	8	49	78	69	101	88	63	43	1,002
2002	29	46	162	36	1	11	23	26	19	26	22	28	429
2001	28	44	71	11	0	6	16	48	14	17	27	38	320
2000	68	103	84	11	0	17	29	38	16	26	10	41	443
1999	67	39	81	7	0	22	28	25	15	45	37	32	398
1998	40	89	145	12	2	26	42	22	25	26	32	20	481
1997	39	69	86	21	6	7	14	28	37	55	17	33	412
1996	10	18	32	20	1	11	28	36	34	18	18	19	245
1995	22	25	38	18	0	24	40	38	35	24	14	8	286

Overdimension Permits Issued

Year	January	February	March	April	May	June	July	August	September	October	November	December	Total
2006	286	318	847	227	115	203	229	155	267	188	152	108	3,095
2005	278	420	900	233	102	287	258	146	292	312	231	113	3,572
2004	250	195	555	125	56	207	244	227	199	177	154	130	2,519
2003	126	322	651	89	91	156	194	133	267	192	143	126	2,490
2002	200	436	442	129	45	91	113	141	139	143	92	88	2,059
2001	178	371	537	149	59	91	70	244	110	115	107	134	2,165
2000	303	485	465	83	32	113	153	137	129	105	77	131	2,213
1999	210	269	325	74	68	126	100	95	100	172	120	131	1,790
1998	174	297	439	87	103	121	141	120	110	125	88	106	1,911
1997	287	371	341	140	100	128	120	136	164	151	74	97	2,109
1996	84	164	227	115	116	208	152	139	223	135	102	168	1,833
1995	80	102	199	92	126	175	210	201	160	134	63	62	1,604

Vehicle Registration Permits Issued (non-NWT Carriers)

Year	January	February	March	April	May	June	July	August	September	October	November	December	Total
2006	473	1007	761	295	293	320	372	350	437	258	266	345	5,177
2005	472	833	958	264	213	434	376	309	415	282	230	277	5,063
2004	284	653	499	163	179	231	286	358	285	212	147	202	3,499
2003	180	675	590	171	180	329	298	184	316	217	151	165	3,456
2002	467	643	463	203	88	277	296	257	271	204	178	149	3,496
2000	350	546	523	131	150	286	285	260	254	227	122	274	3,408
1999	316	474	427	85	115	220	232	226	205	257	140	259	2,956
1998	286	392	463	94	208	251	321	219	223	207	123	262	3,049
1997	322	380	285	215	112	281	219	229	195	148	137	176	2,699
1996	269	255	277	166	191	182	275	187	237	194	150	245	2,628
1995	175	228	250	149	223	240	300	241	165	130	89	88	2,278

Fuel Tax Permits Issued

Year	January	February	March	April	May	June	July	August	September	October	November	December	Total
2006	497	997	1250	271	180	304	325	311	359	248	196	245	5,183
2005	403	821	1455	283	170	409	442	357	433	299	198	171	5,441
2004	239	485	589	136	132	349	285	308	282	243	136	98	3,282
2003	72	514	690	133	139	332	289	187	353	209	127	157	3,202
2002	338	526	715	177	52	321	256	242	192	187	121	90	3,217
2000	363	523	773	103	105	317	336	303	282	260	151	284	3,800
1999	366	530	440	80	89	210	266	195	243	302	139	255	3,115
1998	224	355	612	98	200	272	363	240	237	230	135	285	3,251
1997	324	404	370	144	160	284	272	201	161	163	127	161	2,771
1996	169	310	339	134	153	202	276	191	259	170	131	183	2,517

- Note:
- (1) A commercial vehicle is any vehicle with a GVW over 4500 kg
 - (2) Overweight and Overdimension permits are issued for a single trip
 - (3) All commercial vehicles in the Northwest Territories must register at the scale. Registration for NWT carriers is valid for one year. Non-NWT carriers may purchase registration for periods of 1-12 months
 - (4) Fuel Tax Permits are issued to all carriers transporting bulk fuel purchased outside the Northwest Territories
 - (5) Some 2001 data was unavailable
 - (6) Prior to 2003, combination overweight and overdimension permits were counted as one overdimension permit only. Currently, they are counted as one overdimension permit and one overweight permit.

**Figure 12
Commercial Vehicle Activity
at the Inuvik Weigh Scale**

Inuvik Weigh Scale

Overweight Permits Issued

Year	January	February	March	April	May	June	July	August	September	October	November	December	Total
2006	8	6	13	12	4	2	33	17	0	14	0	0	109
2005	2	18	53	14	4	16	12	5	13	8	0	2	147
2004	0	23	33	43	0	18	15	14	16	12	4	2	180
2003	24	24	53	22	0	12	10	8	28	26	10	4	221
2002	19	17	28	10	12	6	11	13	8	23	0	8	155
2001	13	4	2	3	2	0	13	3	11	11	2	0	64

Overdimension Permits Issued

Year	January	February	March	April	May	June	July	August	September	October	November	December	Total
2006	14	9	22	18	4	12	49	26	2	22	0	0	178
2005	20	110	152	66	4	27	34	8	22	18	0	14	475
2004	36	57	93	155	0	31	33	33	37	17	10	3	505
2003	64	79	155	79	3	36	27	19	62	45	10	4	583
2002	112	49	74	95	12	17	34	21	28	54	5	12	513
2001	58	48	17	54	9	12	32	8	39	33	3	26	339

Vehicle Registration Permits Issued (non-NWT Carriers)

Year	January	February	March	April	May	June	July	August	September	October	November	December	Total
2006	14	17	31	29	4	29	21	24	16	20	0	15	220
2005	31	43	45	63	1	36	24	32	33	17	1	13	339
2004	16	17	74	50	10	20	38	32	59	26	3	2	347
2003	76	50	47	35	2	28	69	29	45	27	0	6	414
2002	127	72	49	56	5	24	28	21	18	0	0	11	411
2001	32	42	39	42	6	40	57	39	61	0	0	36	394

Fuel Tax Permits Issued

Year	January	February	March	April	May	June	July	August	September	October	November	December	Total
2006	16	23	49	18	3	25	19	20	20	22	0	10	225
2005	27	44	44	51	0	12	15	19	27	18	0	4	261
2004	7	12	45	47	6	11	24	18	49	11	0	11	241
2003	36	63	53	37	2	17	63	23	37	13	0	2	346

**Figure 13
Commercial Vehicle Activity
at the Fort Liard Weigh Scale**

Fort Liard Weigh Scale

Overweight Permits Issued

Year	January	February	March	April	May	June	July	August	September	October	November	December	Total
2006	0	9	0	0	0	0	26	4	0	10	0	0	49
2005	10	3	2	0	0	3	13	26	0	26	0	0	83
2004	2	32	24	0	0	0	10	16	2	0	4	0	90
2003	26	22	22	0	0	0	10	4	32	0	0	0	116
2002	9	36	0	6	0	0	0	0	2	0	0	6	59
2001	23	17	3	1	0	12	12	2	3	0	0	1	74

Overdimension Permits Issued

Year	January	February	March	April	May	June	July	August	September	October	November	December	Total
2006	13	11	0	0	0	11	36	4	1	8	11	8	103
2005	15	4	16	1	0	4	14	50	4	47	7	8	170
2004	7	46	34	22	1	0	3	40	2	1	5	0	161
2003	54	44	36	5	0	2	13	11	56	1	0	0	222
2002	25	66	2	13	0	2	0	2	2	3	0	11	126
2001	54	33	21	3	0	19	20	2	10	2	6	13	183

Vehicle Registration Permits Issued (non-NWT Carriers)

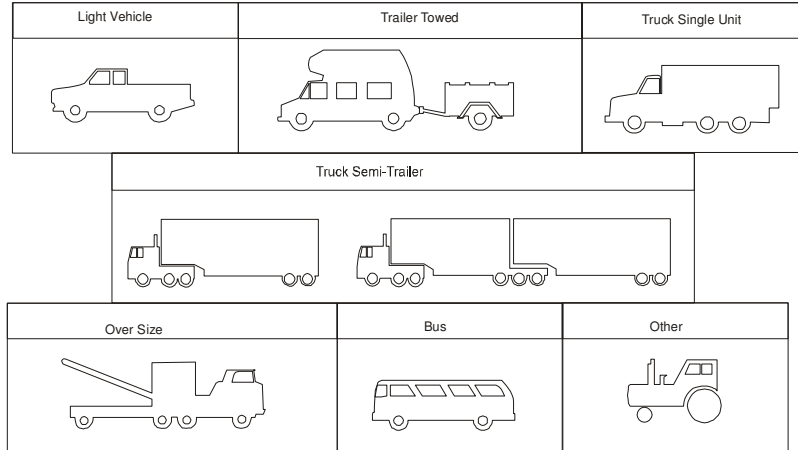
Year	January	February	March	April	May	June	July	August	September	October	November	December	Total
2006	22	13	1	0	3	11	34	15	10	13	12	6	140
2005	22	21	17	2	0	10	13	25	14	48	6	11	189
2004	35	47	119	61	60	14	49	31	24	24	16	11	491
2003	105	37	112	57	79	20	25	55	64	22	17	13	606
2002	54	48	15	21	1	10	14	14	10	0	3	14	204
2001	114	77	17	21	7	36	30	23	14	0	20	28	387

Fuel Tax Permits Issued

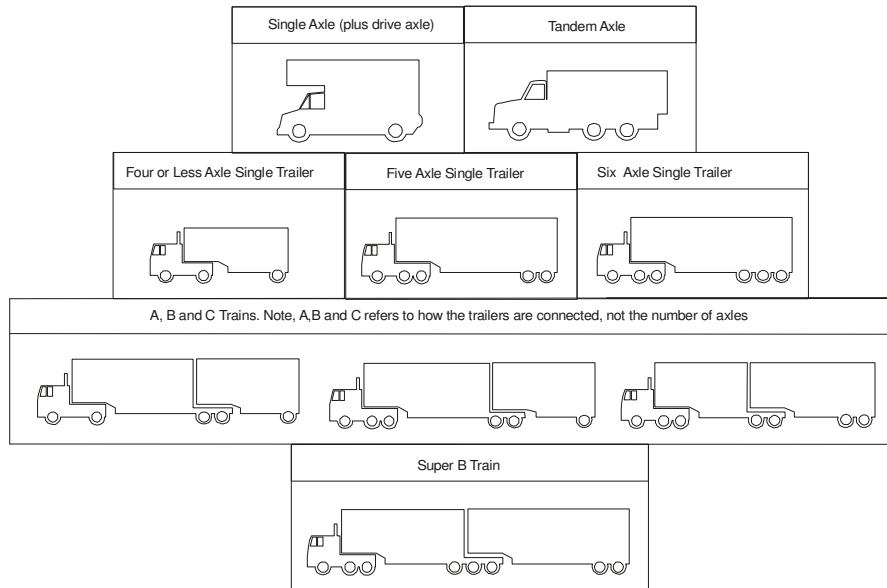
Year	January	February	March	April	May	June	July	August	September	October	November	December	Total
2006	17	4	1	0	1	5	36	6	6	12	9	1	98
2005	12	17	13	3	0	8	13	18	15	48	10	3	160
2004	23	49	71	22	4	3	46	10	3	9	2	0	242
2003	78	22	6	14	2	1	7	12	29	7	1	1	180

Figure 14
Vehicle Classifications

Highway Ferries



Weigh Scale Classification



Note: For more information regarding commercial vehicle definitions and allowable weights, please see the *Large Vehicle Control Regulations* under the *Motor Vehicles Act* available at www.justice.gov.nt.ca

Section 1.0

**Summary of Traffic
Data Collection Activities
and Analysis**

Section 2.0

Highway Traffic Volume Data

Section 3.0

Vehicle Movements at Ferries and Weigh Scales

Appendix A
Historical Data

The Department has been actively collecting data since its formation in 1989. This Traffic Report shows the current state of the system only, however the following historical data is available:

- **Short-term Visual Counts** – Vehicles are classified and counted manually at various highway junctions throughout the territory. The data is used to enhance vehicle classification and AADT calculations.
- **Short-term Intersection Volume Counts** – Vehicles are counted by direction and turning movement, which gives an indication of overall traffic flow at selected intersections on the highway system.
- **Historical AADT** – Average daily traffic, broken down by month and year, is also available from 1989 through to 1992. AADT from 1993 through to the present is located in Table 3.

The Department will provide the above data upon request. Please refer to the acknowledgements section in the front of this report for contact information.

Appendix B

Data Processing Methodology

Data Processing Methodology

The primary goal in traffic data collection is to determine Average Annual Daily Traffic (AADT). The most concise way of doing this is to collect traffic data at a site for a year, sum the traffic counts over the year and then divide by 365 days. However, for a number of reasons including routine maintenance, breakdowns and faulty data modules, no counter runs at 100% operational capacity for an entire year. Therefore, adjustments must be made for gaps in the data.

Three steps are involved in the processing of traffic data. Step one is to fill in as much missing data as possible for the year in question. Step two involves applying an AADT formula to the data and step three consists of independently verifying the calculated AADT through other sources and previous experience. The following steps outline this process in more detail:

Step One

- If less than one week of data is missing, an average of the hourly count in the week prior and the week following is calculated and applied to the missing data.
- If over one week of data is missing but less than a month, the first step is to obtain the data from the previous year. If the data cannot be found, an average of the first prior week and the first following week is calculated and applied to the missing data.
- If over one month of data is missing, data from previous years is applied through a growth rate algorithm. The results are analysed for accuracy and completeness through comparisons with other traffic counter sites, data from other sources and previous experience.
- Growth rate is determined at each site by comparing available monthly average daily traffic from year to year and averaging over the last four years.

Step Two

- AADT is determined using an industry standard American Association of State Highway and Transportation Officials (AASHTO) formula (see below). After step one is applied there is a strong possibility that there will still be incomplete data for the year. The AASHTO formula directly accounts for missing data by computing an average of averages.

$$AADT = \frac{1}{7} \sum_{i=1}^7 \left[\frac{1}{12} \sum_{j=1}^{12} \left(\frac{1}{n} \sum_{k=1}^n VOL_{ijk} \right) \right]$$

Where: Vol = daily traffic for day k, of day-of-week i, and month j
i = day of the week
j = month of the year
k = 1 when the day is the first occurrence of that day of the week in a month, 4 when it is the fourth occurrence.
n = the number of days of that day of week during that month (usually between 1 and 5, depending on the number of missing data).

Step Three

- Calculated AADT numbers are compared against previous years' values, other sources of traffic information such as ferry logs and Lupin Winter Road logs, upstream and downstream counter sites and previous experience.
- If results of the AADT algorithms are deemed inaccurate at a particular site, the AADT for the year will be estimated by applying an appropriate growth rate to the previous year's AADT.

Note: For counters located on access roads and winter roads no extra information is introduced. Only the data collected in the current year is presented.

For more detailed information, please contact the Planning and Policy Division of the Department of Transportation as listed in the Acknowledgements section of this report.