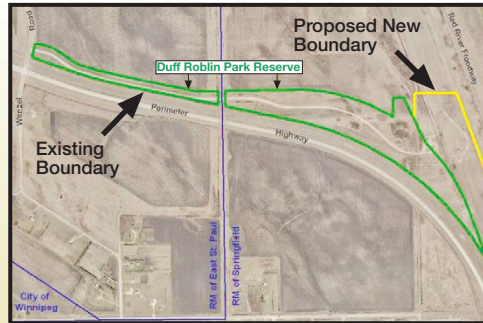


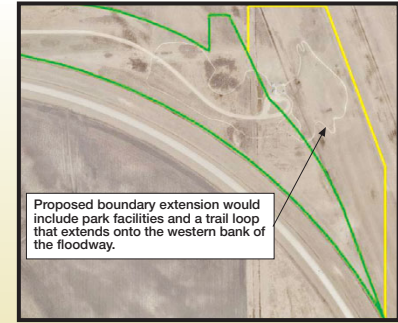
Duff Roblin Park Reserve

Proposed Changes to Land Use Category and Park Boundary

Map #1



Map #2



Manitoba Conservation proposes two changes to the park:

1. Park designation from Recreational Development Land Use Category (LUC) to Heritage LUC. This LUC change would apply to the entire park.
2. Extend the eastern park boundary to include park facilities and an existing trail system loop on the outer periphery of the western floodway bank (See Map2). This change would expand the total area of the park.

Background

The proposed changes will provide an enhanced opportunity for:

- Public information on former Manitoba Premier Duff Roblin including accomplishments relating to the floodway development
- Non-motorized trail based hiking and floodway viewing
- Preserving the natural and heritage values of the park

The proposed changes to the park do not include any new development within the existing or expanded park area. No changes to existing hay leases are included in this proposal.

