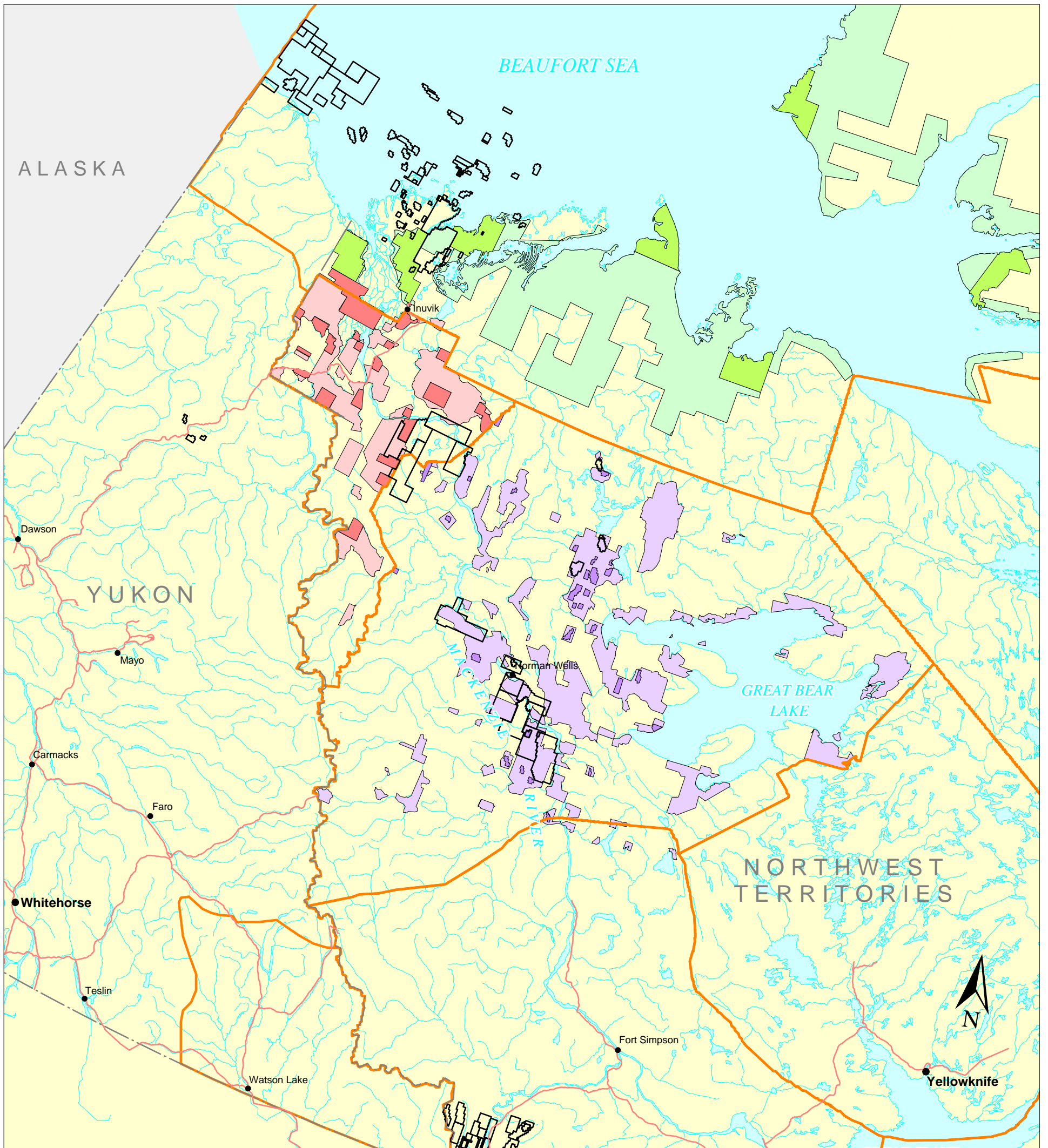


NATIVE LAND CLAIMS AND PETROLEUM LEASE BOUNDARIES



Canadian Energy Research Institute



LAND CLAIMS

- GWICH'IN - SURFACE
- GWICH'IN - SUBSURFACE
- INUVIALUIT - SURFACE
- INUVIALUIT - SUBSURFACE
- SAHTU - SURFACE
- SAHTU - SUBSURFACE

- TRADITIONAL TERRITORY BOUNDARIES
- PETROLEUM LEASE BOUNDARIES

NOTE: Rights boundaries are under review by DIAND.