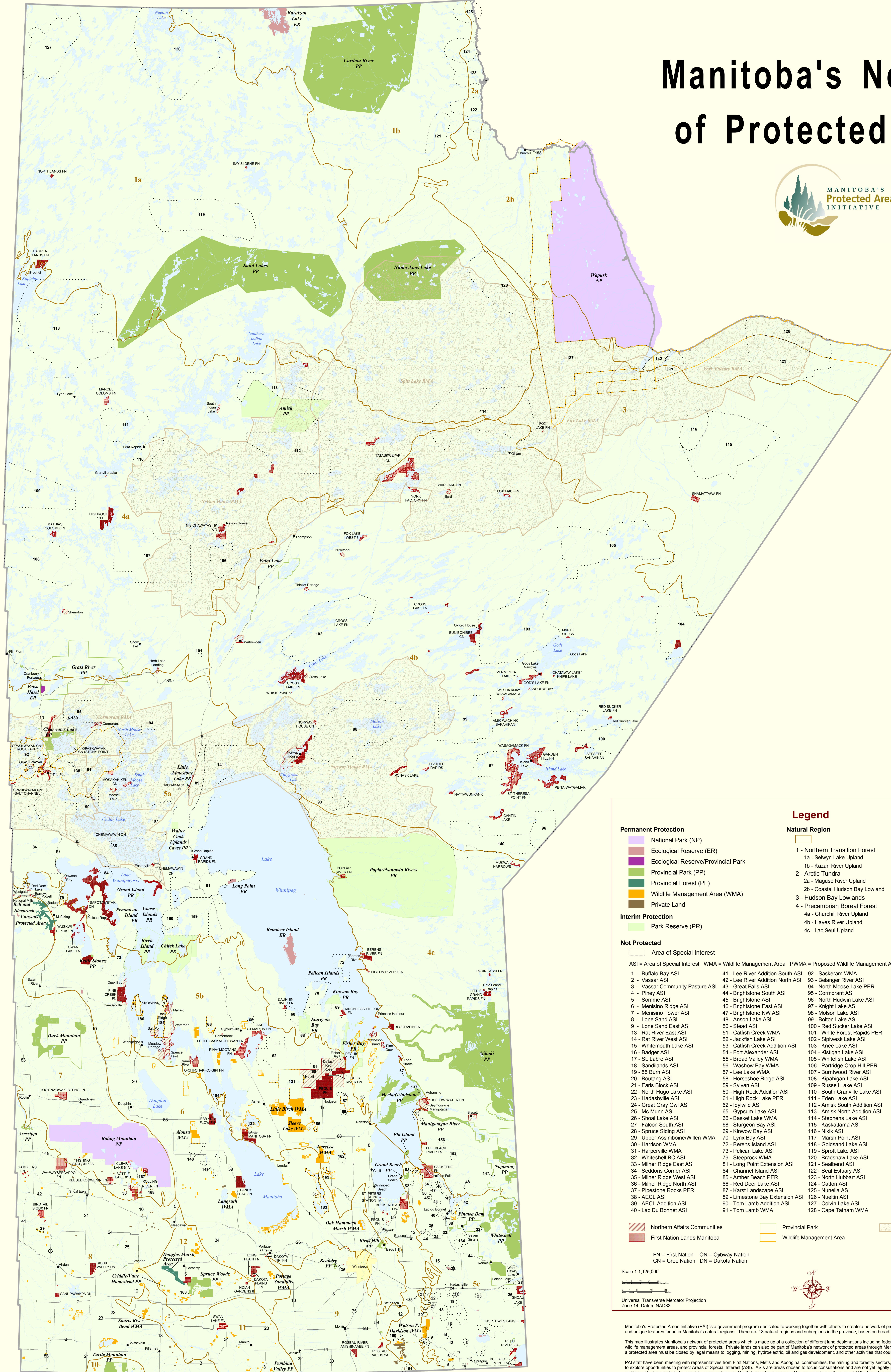


# Manitoba's Network of Protected Areas



**Legend**

**Permanent Protection**

- National Park (NP)
- Ecological Reserve (ER)
- Ecological Reserve/Provincial Park
- Provincial Park (PP)
- Provincial Forest (PF)
- Wildlife Management Area (WMA)
- Private Land

**Interim Protection**

- Park Reserve (PR)

**Not Protected**

- Area of Special Interest

**Natural Region**

|                                 |                          |
|---------------------------------|--------------------------|
| 1 - Northern Transition Forest  | 5 - Manitoba Lowlands    |
| 1a - Selwyn Lake Upland         | 5a - Mid Boreal Lowland  |
| 1b - Kazan River Upland         | 5b - Interlake Plain     |
| 2 - Arctic Tundra               | 5c - Lake of the Woods   |
| 2a - Maguire River Upland       | 6 - Aspen/Oak Parkland   |
| 2b - Coastal Hudson Bay Lowland | 7 - Western Upland       |
| 3 - Hudson Bay Lowlands         | 8 - Souris Till Plain    |
| 4 - Precambrian Boreal Forest   | 9 - Turtle Prairie       |
| 4a - Churchill River Upland     | 10 - Turtle Mountain     |
| 4b - Hayes River Upland         | 11 - Pembina/Tiger Hills |
| 4c - Lac Seul Upland            | 12 - Assiniboine Delta   |

**Interim Protection**

- Park Reserve (PR)

**Not Protected**

- Area of Special Interest

ASI = Area of Special Interest WMA = Wildlife Management Area PWMA = Proposed Wildlife Management Area PER = Proposed Ecological Reserve

|                                   |                                   |                                |  |
|-----------------------------------|-----------------------------------|--------------------------------|--|
| 1 - Buffalo Bay ASI               | 41 - Lee River Addition South ASI | 82 - Saakaram WMA              | 129 - Cape Tatum Addition ASI              |
| 2 - Vassar ASI                    | 42 - Lee River Addition North ASI | 93 - Belanger River ASI        | 130 - Mari Pond (Mitchell Lakes) PER       |
| 3 - Vassar Community Pasture ASI  | 43 - Great Falls ASI              | 94 - North Moose Lake PER      | 131 - Mantago Lake WMA                     |
| 4 - Piney ASI                     | 44 - Brightstone South ASI        | 95 - Cormorant ASI             | 132 - Dog Lake Islands PER                 |
| 5 - Somme ASI                     | 45 - Brightstone ASI              | 96 - North Hudson Lake ASI     | 135 - Balsam Willows PER                   |
| 6 - Menisno Ridge ASI             | 46 - Brightstone East ASI         | 97 - Knight Lake ASI           | 136 - Assiniboine River Clam Beds PER      |
| 7 - Menisno Tower ASI             | 47 - Brightstone NW ASI           | 98 - Molson Lake ASI           | 137 - Red Pine PER                         |
| 8 - Lone Sand ASI                 | 48 - Anson Lake ASI               | 99 - Bolton Lake ASI           | 138 - Little Frog Creek PER                |
| 9 - Lone Sand East ASI            | 50 - Stead ASI                    | 100 - Red Sucker Lake ASI      | 140 - Hudson Lake ASI                      |
| 13 - Rat River East ASI           | 51 - Catfish Creek WMA            | 101 - White Forest Rapids PER  | 141 - Limestone Bay Proposed National Park |
| 14 - Rat River West ASI           | 52 - Jackfish Lake ASI            | 102 - Sipewick Lake ASI        | 142 - Marsh Point North PER                |
| 15 - Whittemouth Lake ASI         | 53 - Catfish Creek Addition ASI   | 103 - Kneeh Lake ASI           | 147 - Spring Lake PER                      |
| 16 - Badger ASI                   | 54 - Fort Alexander ASI           | 104 - Kistigan Lake ASI        | 148 - McCreary Pasture ASI                 |
| 17 - St. Labre ASI                | 55 - Broad Valley WMA             | 105 - Whitefish Lake ASI       | 149 - Agnosa Pasture ASI                   |
| 18 - Sandlands ASI                | 56 - Washaway WMA                 | 106 - Partridge Crop Hill PER  | 150 - Fanny Pasture ASI                    |
| 19 - 55 Burn ASI                  | 57 - Lee Lake WMA                 | 107 - Burntwood River ASI      | 151 - Gardenton Pasture ASI                |
| 20 - Boutang ASI                  | 58 - Horseshoe Ridge ASI          | 108 - Kipahigan Lake ASI       | 152 - O'Hanly ASI                          |
| 21 - Earls Block ASI              | 59 - Sylvan ASI                   | 109 - Russell Lake ASI         | 153 - Observation Point ASI                |
| 22 - North Hugo Lake ASI          | 60 - High Rock Addition ASI       | 110 - South Granville Lake ASI | 156 - O'Hanly River ASI                    |
| 23 - Hadaville ASI                | 61 - High Rock Lake PER           | 111 - Eden Lake ASI            | 158 - Churchill Geology Site ASI           |
| 24 - Great Gray Owl ASI           | 62 - Idylwild ASI                 | 112 - Amisk South Addition ASI | 159 - Long Point South Extension ASI       |
| 25 - Mc Munn ASI                  | 65 - Gypsum Lake ASI              | 113 - Amisk North Addition ASI | 160 - Long Point Proposed Addition ASI     |
| 26 - Shoal Lake ASI               | 66 - Basket Lake WMA              | 114 - Stephens Lake ASI        | 162 - Fish Lake ASI                        |
| 27 - Falcon South ASI             | 68 - Sturgeon Bay ASI             | 115 - Kaskatama ASI            | 163 - Spirit Sands PER                     |
| 28 - Spruce Siding ASI            | 69 - Kinow Bay ASI                | 116 - Nikik ASI                | 164 - Whitemouth Bog ASI                   |
| 29 - Upper Assiniboine/Willen WMA | 70 - Lynx Bay ASI                 | 117 - Marsh Point ASI          | 167 - Onanole WMA                          |
| 30 - Harrison WMA                 | 72 - Berens Island ASI            | 118 - Gossard Lake ASI         | 168 - Hilltop WMA                          |
| 31 - Harperville WMA              | 73 - Pelican Lake ASI             | 119 - Sprott Lake ASI          | 169 - Clematis WMA                         |
| 32 - Whiteshell BC ASI            | 79 - Steeprock WMA                | 120 - Bradshaw Lake ASI        | 183 - Shoal Lakes PWMA                     |
| 33 - Milner Ridge East ASI        | 81 - Long Point Extension ASI     | 121 - Sealbend ASI             | 184 - Reyjaviik Game Bird Refuge PWMA      |
| 34 - Seadons Corner ASI           | 84 - Channel Island ASI           | 122 - Seal Estuary ASI         | 185 - Watermen - Long Island Bay PWMA      |
| 35 - Milner Ridge West ASI        | 85 - Amber Beach PER              | 123 - North Hubbard ASI        | 186 - Red Deer Point PWMA                  |
| 36 - Milner Ridge North ASI       | 86 - Red Deer Lake ASI            | 124 - Catton ASI               | 187 - Churchill WMA                        |
| 37 - Pipestone Rocks PER          | 87 - Karst Landscape ASI          | 125 - Nunella ASI              | 188 - Delta Marsh Addition PWMA            |
| 38 - AECL ASI                     | 89 - Limestone Bay Extension ASI  | 126 - Nueltin ASI              | 189 - Silver Bog ASI                       |
| 39 - AECL Addition ASI            | 90 - Tom Lamb Addition ASI        | 127 - Colvin Lake ASI          |  |
| 40 - Lac Du Bonnet ASI            | 91 - Tom Lamb WMA                 | 128 - Cape Tatum WMA           |  |

FN = First Nation ON = Ojibway Nation  
CN = Cree Nation DN = Dakota Nation

Scale 1:1,125,000

Universal Transverse Mercator Projection  
Zone 14, Datum NAD83

**Manitoba**

Manitoba's Protected Areas Initiative (PAI) is a government program dedicated to working together with others to create a network of protected lands that represents the biological diversity and unique features found in Manitoba's natural regions. There are 18 natural regions and subregions in the province, based on broad landform types and climate.

This map illustrates Manitoba's network of protected areas which is made up of a collection of different land designations including federal and provincial parks, ecological reserves, wildlife management areas, and provincial forests. Private lands can also be part of Manitoba's network of protected areas through Memoranda of Agreement. In Manitoba, as a minimum, a protected area must be closed by legal means to logging, mining, hydroelectric, oil and gas development, and other activities that could significantly and adversely affect natural habitat.

PAI staff have been meeting with representatives from First Nations, Métis and Aboriginal communities, the mining and forestry sectors, environmental organizations, and the public to explore opportunities to protect Areas of Special Interest (ASI). ASI are areas chosen to focus consultations and are not yet legally protected. ASIs are intended to capture samples of different features to help to complete representation in Manitoba's natural regions. This map illustrates the current ASI, based on evaluating complete representation through enduring features analysis and the results of consultations to date.

For more information visit [www.manitobaprotectedareas.com](http://www.manitobaprotectedareas.com) or contact the Protected Areas Initiative at (204) 945-4040.