



The New Duff Roblin Park Reserve

Land Designation

Park Reserve

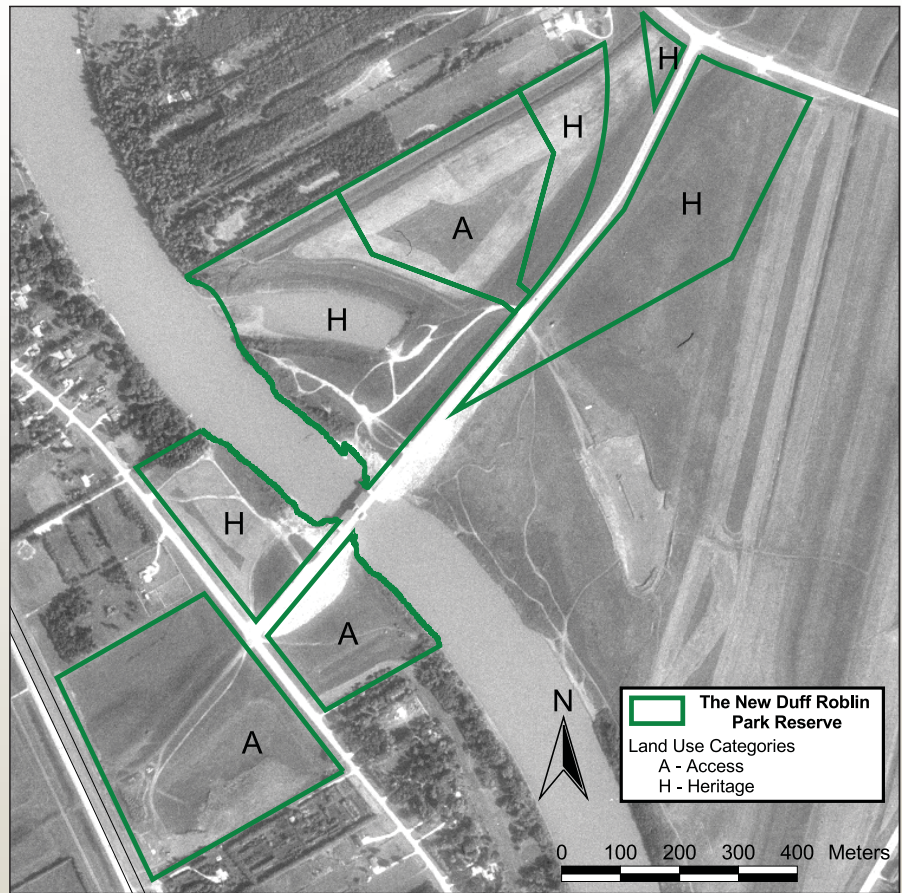
Landscape Description

The New Duff Roblin Park Reserve is located approximately four kilometres south of the Winnipeg Perimeter off PTH 75. It is 56 hectares in size and includes the Floodway Inlet Control Structure and a portion of the floodway. The park reserve has both Heritage and Access land use categories (LUC). The 32 hectares of Heritage LUC land recognizes the historical and socio-economic significance of the floodway, while the 24 hectares reserved for Access LUC purposes accommodates an existing tower and utility needs in the floodway inlet area.

Outstanding Features

Named after former Manitoba Premier Duff Roblin, the park reserve commemorates construction of the flood control system for the City of Winnipeg and will celebrate the establishment of Manitoba's system of provincial parks. Construction on the Greater Winnipeg Floodway, known as Duff's Ditch, began in 1962 and took six years to complete. As the largest excavation project in Canada to date, and one of the largest earthmoving projects in the world, it required the removal of 76 million cubic metres of earth. At a length of 47 km and a width equal to that of the Red River, the Floodway is large enough to be seen from space.

Since the Floodway's completion it has been used twenty times to help control the Red River flood levels. Without the Floodway, it is estimated that the 1997 flood would have crested at 10.5 metres,



flooding 80 per cent of Winnipeg and forcing the evacuation of 550,000 of its citizens. In 2000, the Red River Floodway was designated a National Historic Site, as an “outstanding engineering achievement in flood control.”

Manitoba’s Parks and Natural Areas worked with the Manitoba Floodway Authority to establish this park reserve which will provide opportunities for recreational activities while respecting present and anticipated utility needs in the Floodway inlet area. Proposed amenities for the site include a parking lot, picnic areas and shelters, walking and bicycling trails, washroom, drinking water and fishing facilities, bike racks, a toboggan run and landscape improvements.