

**50 Years of  
New Brunswick  
Road Building**



**1958**

**Gorge Road**





GORGE RD. OVERHEAD  
July 26/58

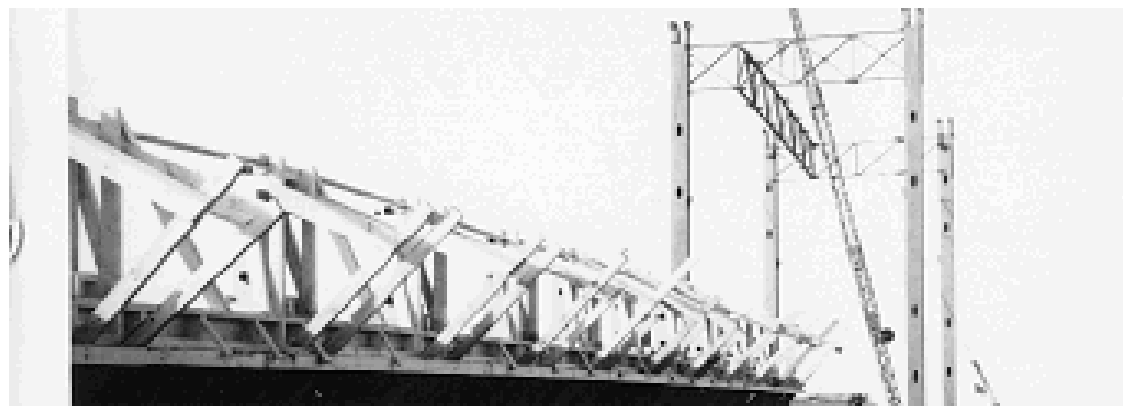
3 - G6B



**1958**

**Lamèque-  
Shippagan  
Drawbridge**





12-610



AN DRAW BR.  
12-381

12-610



LAMEQUE-SHIPPEGAN DRAW BR.  
Nov. 4/58 12-381

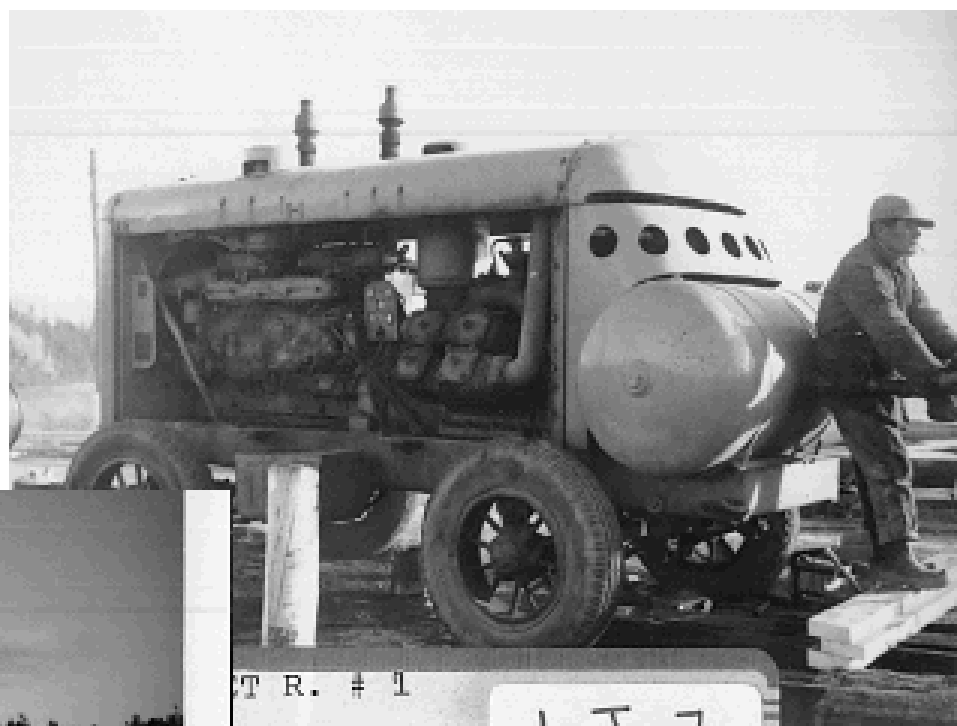
99



**1959**

**Jacquet River  
Bridge #1**

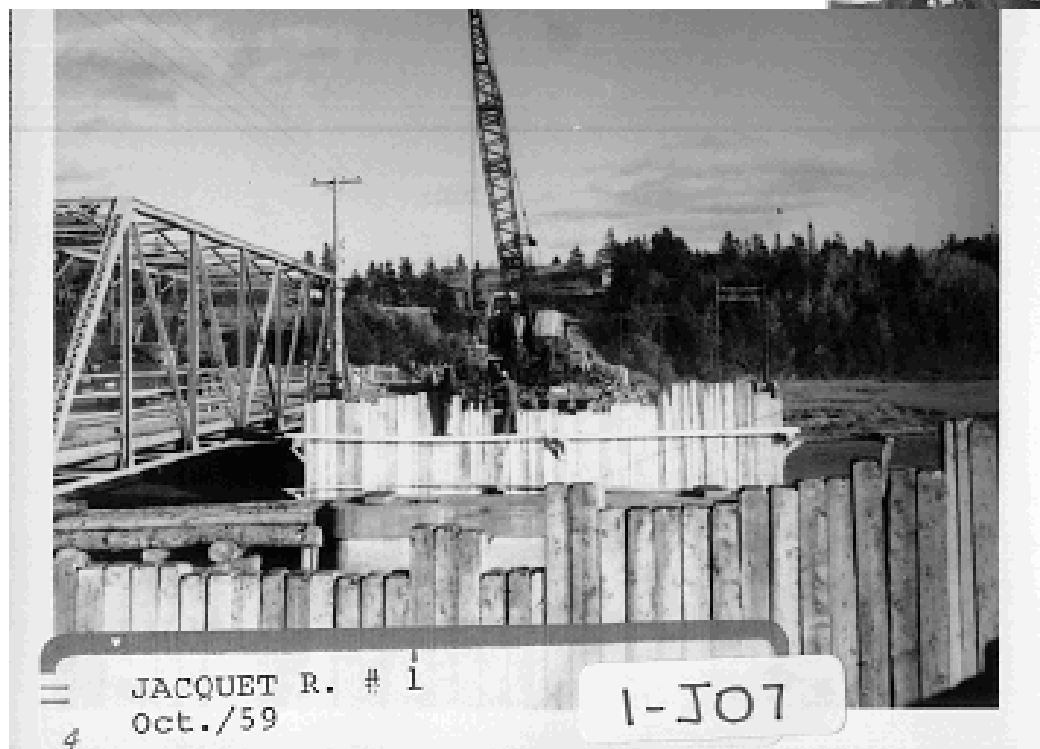




JACQUET R. # 1

Oct./59

1-J07



JACQUET R. # 1  
Oct./59

1-J07



**1965-67**

**Centennial Bridge**







2 MIRAMICHI RV.  
Sept. 30/65 2-C30

PHOTO 185 30 SEPT 65  
PROGRESS





5 MIRAMICHI RV. 2-C30  
Sept. 29/66

PHOTO 105 29 SEPT 66





MIRAMICHI RV

2-C30

7



**1967-69**

**Burton Bridge**









BURTON BRIDGE  
17 Nov. 8/67 19-150







BURTON BRIDGE  
19-150





166 BURTON BRIDGE  
Dec./69 19-150





**1968**

**Florenceville  
TCH Bridge**







FLORENCEVILLE BR. (T.C.H.)  
Oct. 19/68

7-307 7-F55

30







FLORENCEVILLE BRIDGE

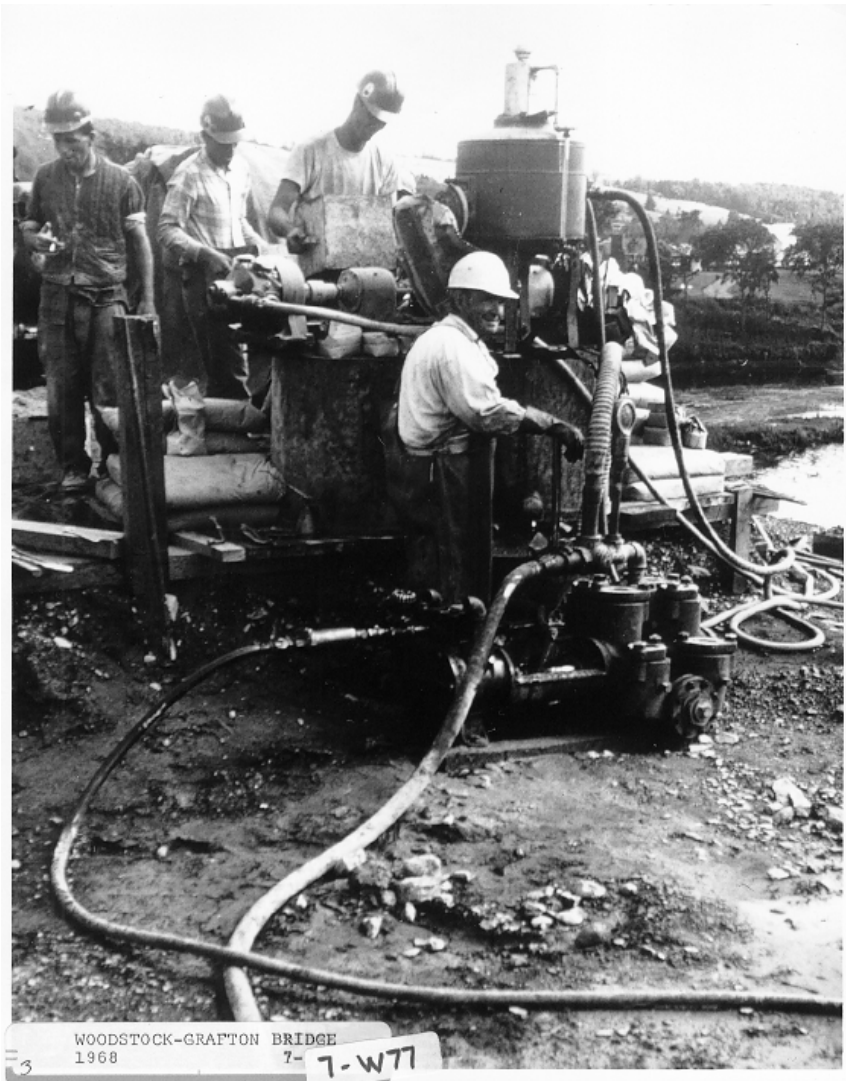
7-F55



**1968-69**

**Grafton Bridge**

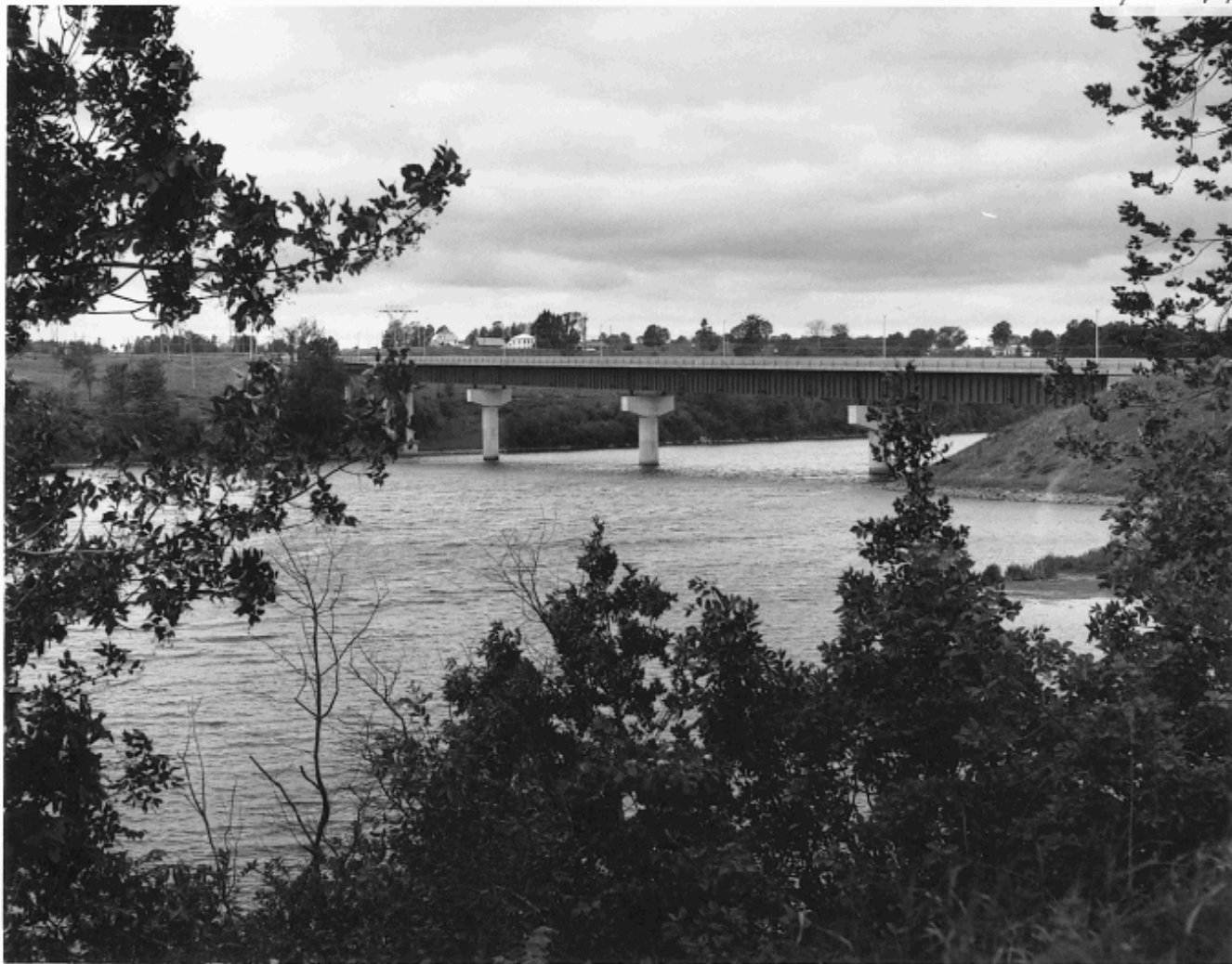




WOODSTOCK-GRAFTON BRIDGE  
1968 7- W71







**1969**

**Roachville  
Interchange**







**1971**

**Nepisiquit River  
Bridge #1.5**





NEPISQUIT R. BR. # 1.5  
12-488  
27





NEPISIQUIT R. # 1.5 12-488  
90



**1971-72**

**Northwest  
Miramichi River  
Bridge #2**





N. W. MIRAMICHI R. BR. # 2  
Oct. 1971

2-N56

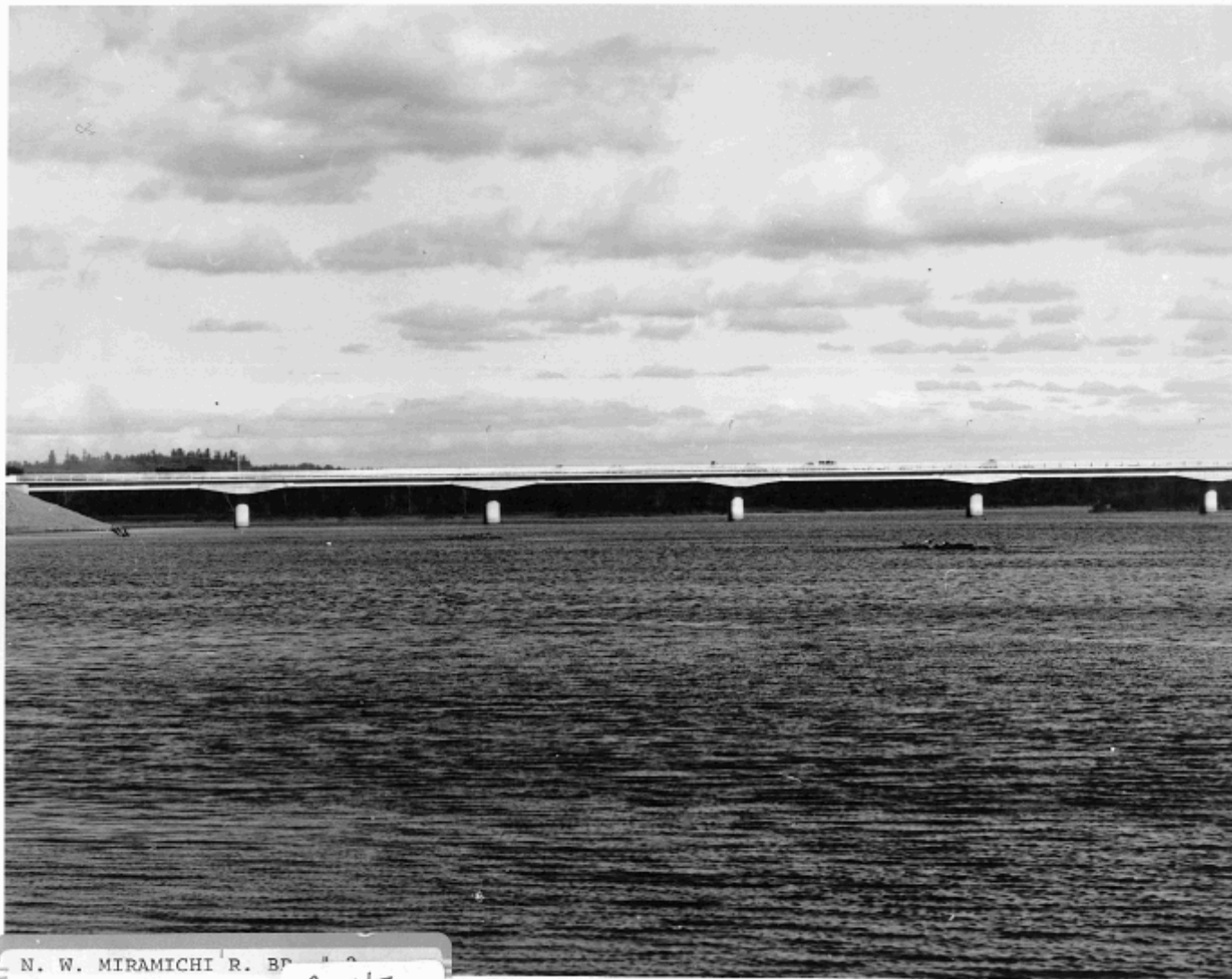






2-N56





N. W. MIRAMICHI R. BRIDGE  
43 2-N56

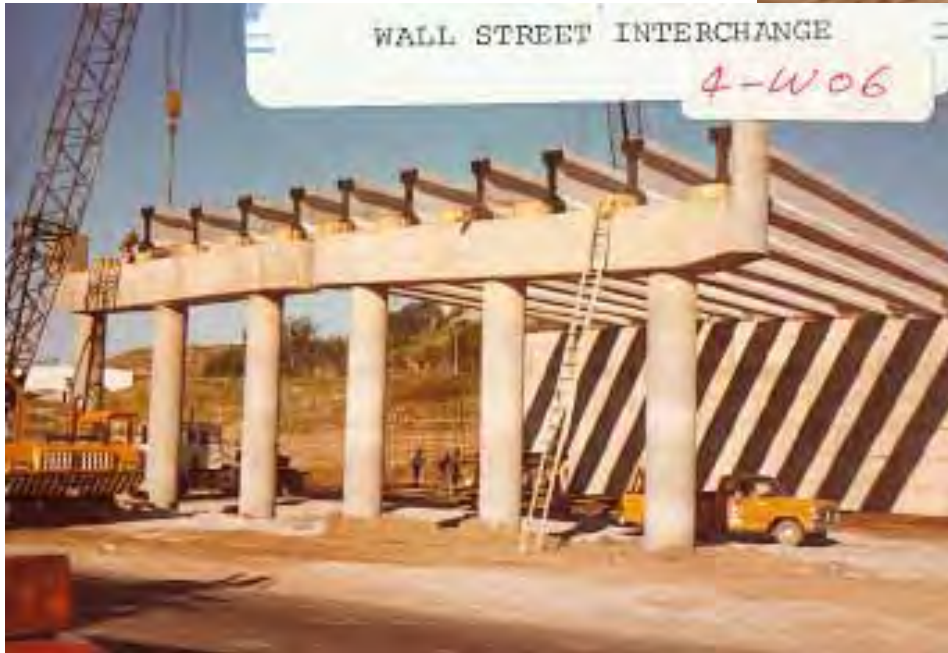




**1976-77**

**Wall Street  
Interchange**





WALL STREET INTERCHANGE  
4-W06

WALL STREET INTERCHANGE  
4-W06



**1985**

**Richibucto  
River Bridge #2**





**1985**

**Paving Rte 8 - Rte 450  
to Big Eskedelloc  
River**







**1987**

**Rte. 8 - Indiantown  
Brook to Renous**







**1992-95**

# Miscou Island Bridge







**1993-94**

**Newcastle to  
Chatham Collector**











**1996-98**

**Tracadie-Sheila Bypass**













**1998-2001**

**Fredericton-Moncton  
Highway Project**























**2002-04**

**Rte. 8 Miramichi Bypass**





TRACTOR SPREADING TOP SOIL  
ALONG SIDE NEW RIVER CHANDEL  
OLD OXFORD BROOK.













**2004**

**Bathurst Village  
Bridge**











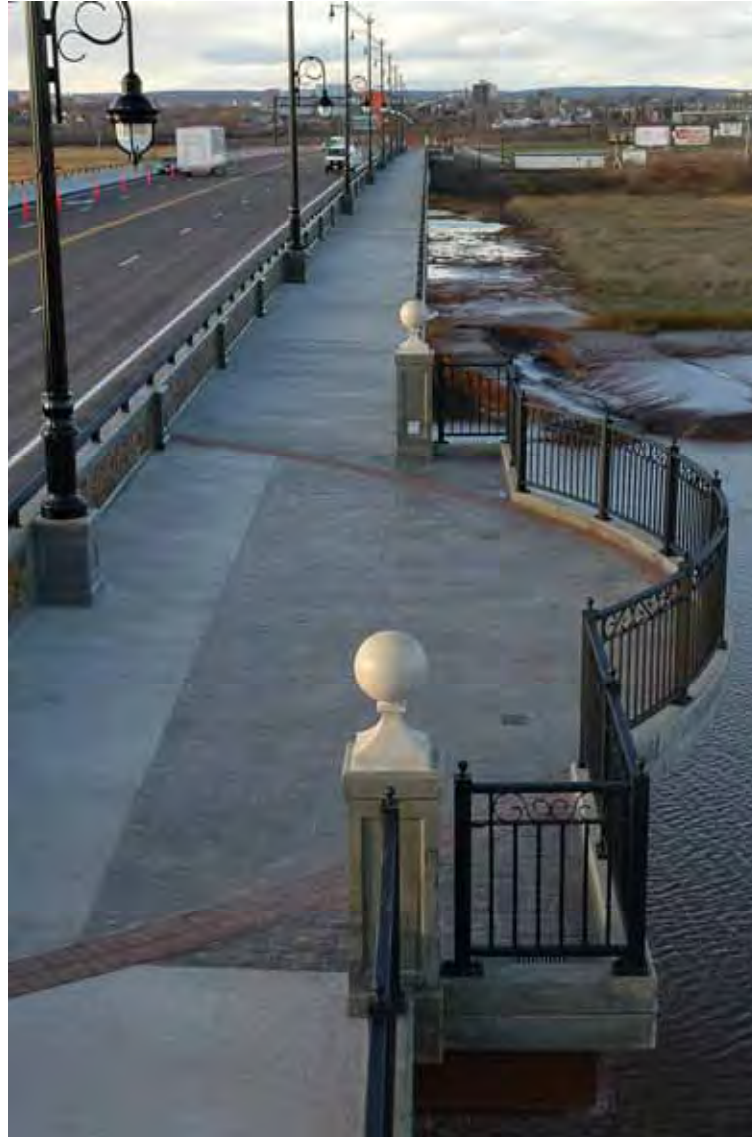


**2005**

**Gunningsville Bridge**











**2006**

**TCH – Pokiok to  
Longs Creek**











**2007**

**Route 95**











**2007**

**TCH – Grand Falls  
to Woodstock**























