

# Copy That!

New  Nouveau  
Brunswick

Volume 3, Issue 1

## Contents

**New hours of service regulations in effect**

**Government adopts new 'green' vehicle policy**

**Know before you go**

**Have a question?**

**Preliminary notice/ Spring weight restrictions**

**Echelon plowing**

**New section of TCH opens**

**Did you know?**

## Know before you go

The Department of Transportation encourages drivers to know before they go by contacting the toll-free road report number whenever road conditions are in question.

The toll-free number is available to callers within New Brunswick 24 hours per day, seven days per week.

Callers can get information about road conditions, visibility, precipitation and drifting on all of New Brunswick's arterial highways. General information about secondary roads is also available.

**Toll-free number: 1-800-561-4063**

## Have a question?

**Send us an e-mail using our special e-mail address for truckers!**

[special.permits@gnb.ca](mailto:special.permits@gnb.ca)



## New hours of service regulations in effect

Hours of Service requirements for commercial vehicle drivers have been under review for over a decade. The Canadian Council of Motor Transport Administrators (CCMTA) developed a proposal for changes to the rules following the release of a major Canada/US study on driver fatigue in 1997.

The resulting changes were formally approved and published in the Canada Gazette Part II on November 16, 2005. The new regulations, which became effective January 1, 2007, reflect extensive consultations with governments, industry, researchers, labour unions and safety advocacy groups.

A period of educational enforcement will be in place until June 30, with full enforcement set to begin July 1, 2007. During the transition period, carriers will be provided at roadside with feedback and the required information to understand and comply with the new regulations.

In cases of violations, enforcement action consisting of warnings up to and including out-of-service declarations will be taken at roadside and during facility audits to ensure road safety. Appropriate charges will be laid in the most serious cases and/or upon incidences of repeated violations and multiple warnings, and carriers and drivers will be tracked accordingly.

For additional information on hours of service please visit the following sites or contact the New Brunswick Department of Public Safety at (506) 453-2410 or (506) 453-7157.

<http://canadagazette.gc.ca/partII/2005/20051116/html/sor313-e.html>  
[http://www.ccmta.ca/english/pdf/HoS\\_Application\\_Guide.pdf](http://www.ccmta.ca/english/pdf/HoS_Application_Guide.pdf)

## Government adopts new 'green' vehicle policy

The New Brunswick government is implementing a new green vehicle policy that is expected to make the government fleet more fuel-efficient and reduce greenhouse gas emissions (GHGs). Fuel efficiency and flex fuel capabilities will guide purchasing decisions.

Transportation emissions contribute significantly to both greenhouse gases and smog. About one quarter of total greenhouse gas emissions in New Brunswick are caused by transportation. Of this amount, over 70 per cent comes from road transportation.

"Our government wishes to lead by example," Transportation Minister Denis Landry said. "It is our hope to encourage New Brunswickers to look at fuel-efficient options, and reduce greenhouse gas emissions."

# Copy That!

New Brunswick  
Nouveau Brunswick

Volume 3, Issue 1

## New section of TCH opens

The 29 kilometres of four-lane highway that opened on November 3, 2006 were constructed to bypass 33.4 kilometres of two-lane Trans-Canada Highway (Route 2) between Pokiok and Longs Creek.



Interchanges were constructed at Pokiok and Route 635 at Prince William near Kings Landing.

The Pokiok interchange includes a one-kilometre connector road to the existing Route 2 interchange, which will allow traffic to cross Hawkshaw Bridge over the St. John River and travel to Nackawic.

Bridges were constructed to cross the Pokiok Stream and Jewetts Creek. The service roads at Kings Landing and the Pokiok connector road were realigned. The project also included several other smaller bridges and overpasses and 32 linear kilometres of wildlife fencing.

## Did you know?

Did you know that Spring Weight Restrictions are calculated based on the allowable axle mass of a vehicle configuration, except for the steering axle, which is exempt from restriction?



The Vehicle Dimension and Mass Regulation 2001-67 is available online at: <http://www.gnb.ca/0062/regs/2001-67.htm>

If you have any questions or would like further information please contact the Special Permits Office at (506) 453-2982.

## Preliminary notice/Spring weight restrictions

Spring weight restrictions on New Brunswick highways are scheduled to begin effective March 11 at midnight in southern New Brunswick and March 18 at midnight in northern New Brunswick.

The restrictions will continue until May 20 at midnight in southern New Brunswick and May 27 in northern New Brunswick. These dates are dependent upon weather conditions and are therefore subject to change.

For the purpose of these restrictions, northern New Brunswick is described as all that area lying within the Counties of Northumberland, Gloucester, Restigouche, Madawaska, Victoria and that portion of Route 108 within York County, and that portion of Gordon Vale Road and Holtville Road within York County, and that portion of Bloomfield Ridge Road between Holtville Road and Route 625, and that portion of Route 625 between Gordon Vale Road and Route 8.

Weight restrictions for trucks are imposed each year in an effort to protect the highway infrastructure from damage during the spring thaw.

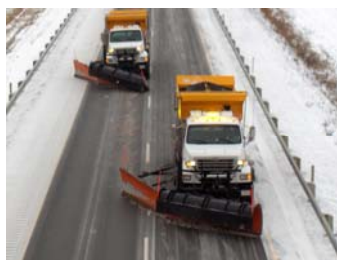
A reminder notice will be issued to industry in February. A notice will also appear in newspapers at that time directing those interested to a detailed listing of affected highways that will be available on the department's web site at: <http://www.gnb.ca/0113/index-e.asp>

Should weather conditions warrant, district engineers are authorized to close roads to trucks or to impose weight restrictions on highways or portions of highways at any time.

## Echelon Plowing

Echelon plowing is the practice of staggered snowplows across all lanes of a roadway. It is the most efficient and safest snow removal method for multi-lane highways.

By passing a ridge of snow from one plow to the next, echelon plowing is capable of clearing all lanes at once.



Please note that it is extremely dangerous to pass between or around the snowplows while they are at work because of possible whiteout conditions and the ridge of snow being passed between plows.

**Copy That!** is a joint publication of the New Brunswick Departments of Transportation and Public Safety. This newsletter is provided as a free information service to the trucking industry.