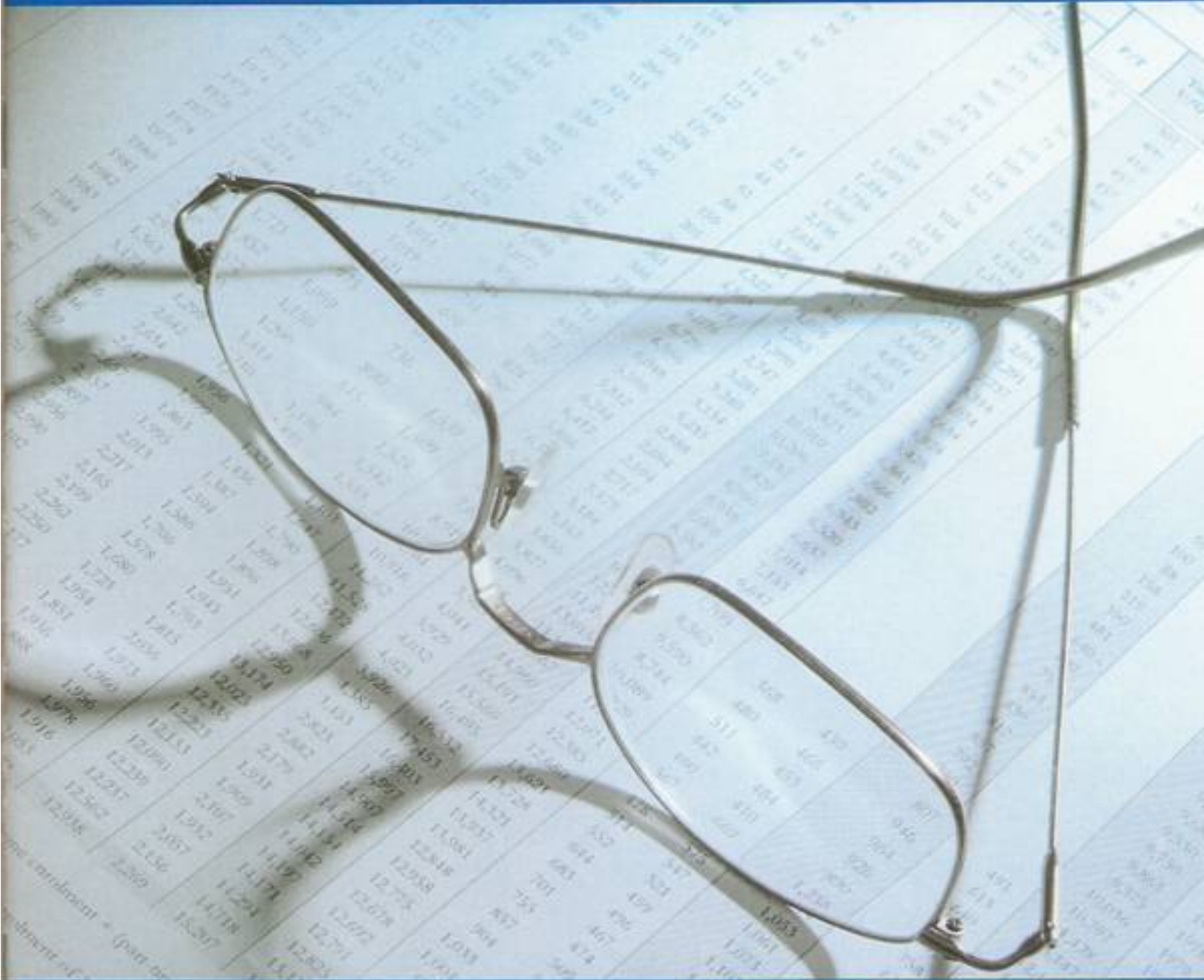


# Sir Wilfred Grenfell College Fact Book 2004



Centre for Institutional Analysis and Planning (CIAP)



**Memorial**  
University of Newfoundland

**Sir Wilfred Grenfell College**  
**Fact Book**  
**2004**

*A companion document to the  
2004 Memorial University of Newfoundland Fact Book*

**Compiled by**  
**Keith Matthews, Senior Institutional Analyst**  
**Centre for Institutional Analysis and Planning**

**030-028-03-05-110**

## Introduction

This book is a companion document to the Memorial University Fact Book and provides a more comprehensive overview of the programs and operations of Sir Wilfred Grenfell College. This book profiles the broad range of programs that are offered at the college.

This book includes data from 2001 to 2004 on:

- Students
- Class size
- Faculty and staff
- Finances
- Library
- Research

Interesting and valuable information can be found on the Grenfell College web page at [www.swgc.mun.ca](http://www.swgc.mun.ca). This Fact Book can also be found at the Centre for Institutional Analysis and Planning web page at <http://www.mun.ca/ciap/factswgc2004.pdf>.

Special thanks are extended to the staff at Sir Wilfred Grenfell College, the Office of the Registrar, the Department of Human Resources, and the Office of Research.

If you would like further information regarding any data in this book, please call the Centre for Institutional Analysis and Planning at Memorial University of Newfoundland (709-737-4016) and they will be pleased to assist.

## Table of Contents

### General Information

History .....	1
Principals .....	1
Evolution.....	1
Organizational Chart Memorial University of Newfoundland .....	2
Organizational Chart Sir Wilfred Grenfell College .....	3

### Student Profile

Table 1	Fall Semester Undergraduate Enrolment - 1975-2004 .....	7
Table 2	Degrees Conferred - 2001-2004 .....	8
Table 3	Degrees Conferred by Degree and First Major - 2001-2004 .....	8
Table 4	Full-time Undergraduate Student Enrolment by First Degree, First Major and Year of Study .....	9
Table 5	Full-time Undergraduate Student Enrolment by Degree Sought, First Major and Gender.....	10
Table 6	Undergraduate Student Enrolment by Age and Gender .....	12
Table 7	Full-time Undergraduate Student Enrolment by Major and Year.....	13
Table 7A	Full-time Undergraduate Student Enrolment by Major and Year of Study.....	14
Table 7B	Full-time Undergraduate Student Enrolment by Major and Gender.....	15
Table 8	Distribution of Full-time Undergraduate Enrolments by Region .....	16
Table 9	Class Size Distribution by Division and Discipline - Academic Year 2003-04 .....	17
Table 10	Western Memorial Regional Hospital Nursing (Collaborative) Enrolment by Age and Gender.....	18
Table 10A	Western Memorial Regional Hospital Nursing (Collaborative) Enrolment by Year of Study.....	18
Table 11	Western Memorial Hospital Nursing (Collaborative) Full-time Enrolment by Region.....	19
NOTES.....	20	

### Human Resources Profile

Table 12	Permanent and Contractual Employees by Pay Group .....	23
Table 13	Employees by Division.....	24
Table 14	Academic Staff by Rank and Gender.....	25
Table 14A	Academic Staff by Degree and Gender .....	25

### Financial Profile

Table 15	Net Expenditures by Unit .....	29
Table 16	Net Expenditures by Object.....	30

### Research Profile

Table 17	Research Support 1999-00 to 2003-04 .....	33
Table 17A	Sources of Research Funding 1999-00 to 2003-04.....	33

### Library Profile

Table 18	Library Holdings.....	37
----------	-----------------------	----



**General  
Information**

## **Academic Purpose of Sir Wilfred Grenfell College**

Sir Wilfred Grenfell College, a campus of Memorial University, is a four-year undergraduate degree-granting institution offering a liberal education in arts and science and a professional education in nursing, theatre and visual arts. In addition, Grenfell College continues to accommodate students who wish to complete their degrees at Memorial University in St. John's or at universities elsewhere.

At Grenfell College the goal of high quality education is reflected in the following commitments:

- To teach students in a variety of challenging contexts and in general to provide them with a personalized learning environment;
- To maintain high academic standards;
- To foster excellence in teaching, to encourage scholarships, research, performance and artistic endeavour, and to engage students, where appropriate, in these activities.

At Grenfell College, a liberal education means a critical and open-minded pursuit of knowledge providing students with the intellectual tools to enable them to respond to a rapidly changing world. A liberal education marks the start of preparation for a career and it may lead to graduate work in a number of fields. In a broader sense it is intended to build a foundation for social, cultural and recreational interests that will help students move toward a meaningful personal and professional life. Academically, the aim of Sir Wilfred Grenfell College is to enable students to be open to new ways of thinking and to gain a lasting intellectual self-confidence so that they may have both the ability and the desire to be life-long learners.

## History of Sir Wilfred Grenfell College

Opened in September 1975 as a regional campus of Memorial University of Newfoundland, the college began by offering first- and second-year university courses in arts, sciences and education. From a single complex, housing classrooms, laboratories, library, bookstore, gym, pool, dining hall and residence with an initial enrolment of 600 students, the college has developed into a liberal arts undergraduate degree-granting institution of 1,350 students, on its multi-building campus in Corner Brook.

Named Sir Wilfred Grenfell College in 1979 in honour of the medical missionary and social reformer who pioneered health services and economic development in northern Newfoundland and coastal Labrador, it began expansion by offering four-year fine arts degree programs in theatre and visual arts. In 1988, Grenfell College opened its new School of Fine Arts building, with a black box theatre, rehearsal hall, studios, darkrooms and an art gallery to support these programs.

Since then, new four-year BA programs have been added in English, environmental studies, historical studies,

humanities, psychology and social/cultural studies, as well as a BA (Hons.) in psychology, B.Sc. and B.Sc. (Hons.) in environmental science, general science and psychology, and the BN offered in conjunction with the Western Memorial School of Nursing. In 1996, Grenfell College also began to offer the first two years of the University of New Brunswick Forestry program.

Today, the campus includes the Library and Computing Building (1995) housing the college library, a computer lab and electronic lecture theatre; the Student Centre Annex (1997) including the Council of the Students' Union offices, student lounge, bar and food court; the Forest Centre (1998), shared with the Canadian Forest Service of Natural Resources Canada and the Western Newfoundland Model Forest Inc.; and five chalet-style residences (2002) offering apartment accommodations for students.

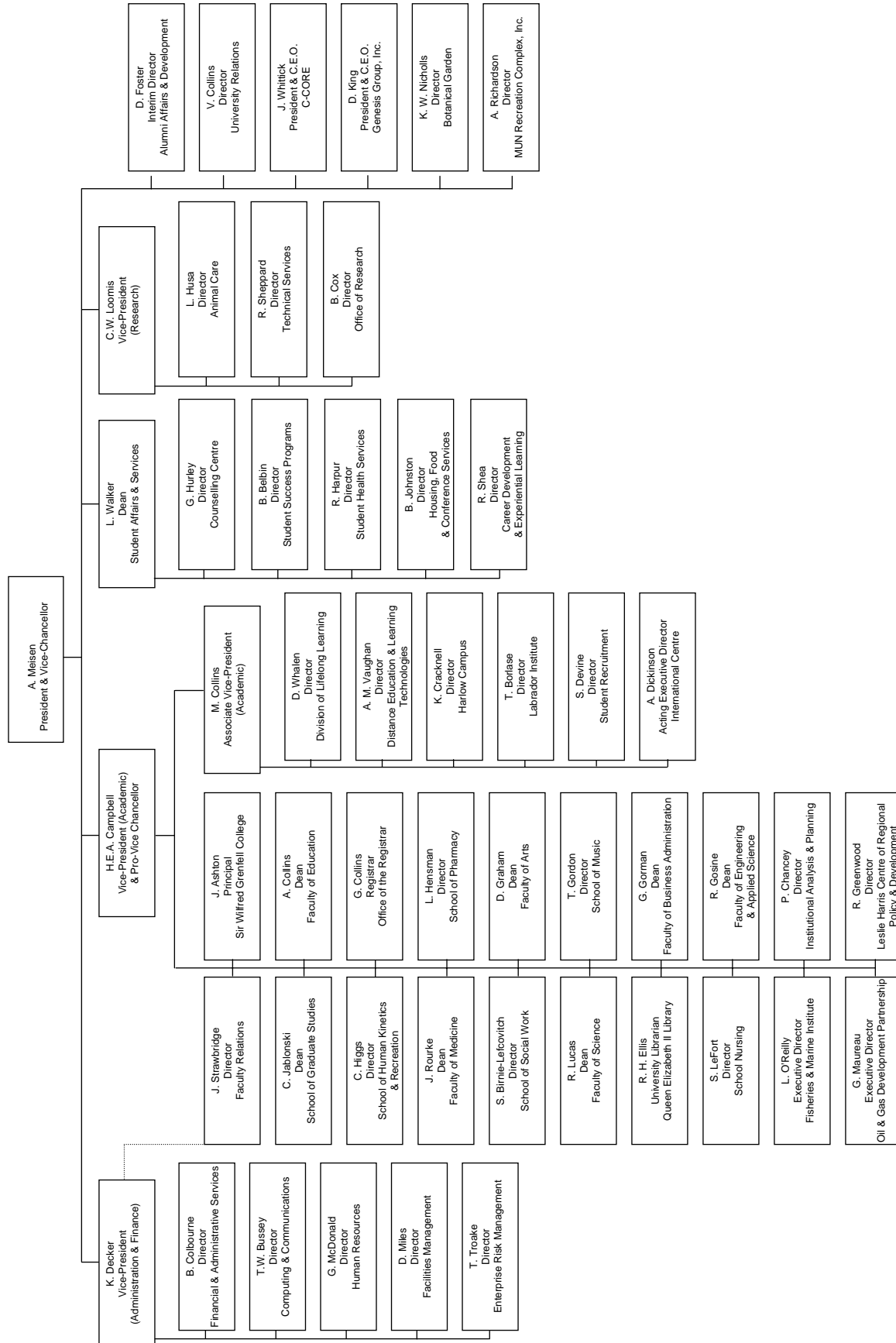
In addition to its distinctive programs and facilities for innovative teaching, Grenfell College offers students a wide range of counseling services, a Learning Centre and excellent recreational opportunities.

---

### Principals

- |             |                         |             |           |
|-------------|-------------------------|-------------|-----------|
| ▪ 1975-1977 | A. Sullivan (designate) | ▪ 1991-1997 | K. Bindon |
| ▪ 1977-1990 | C. Poole                | ▪ 1997-2004 | A. Fowler |
| ▪ 1990-1991 | F. Hodgett (Acting)     | ▪ 2004-     | J. Ashton |

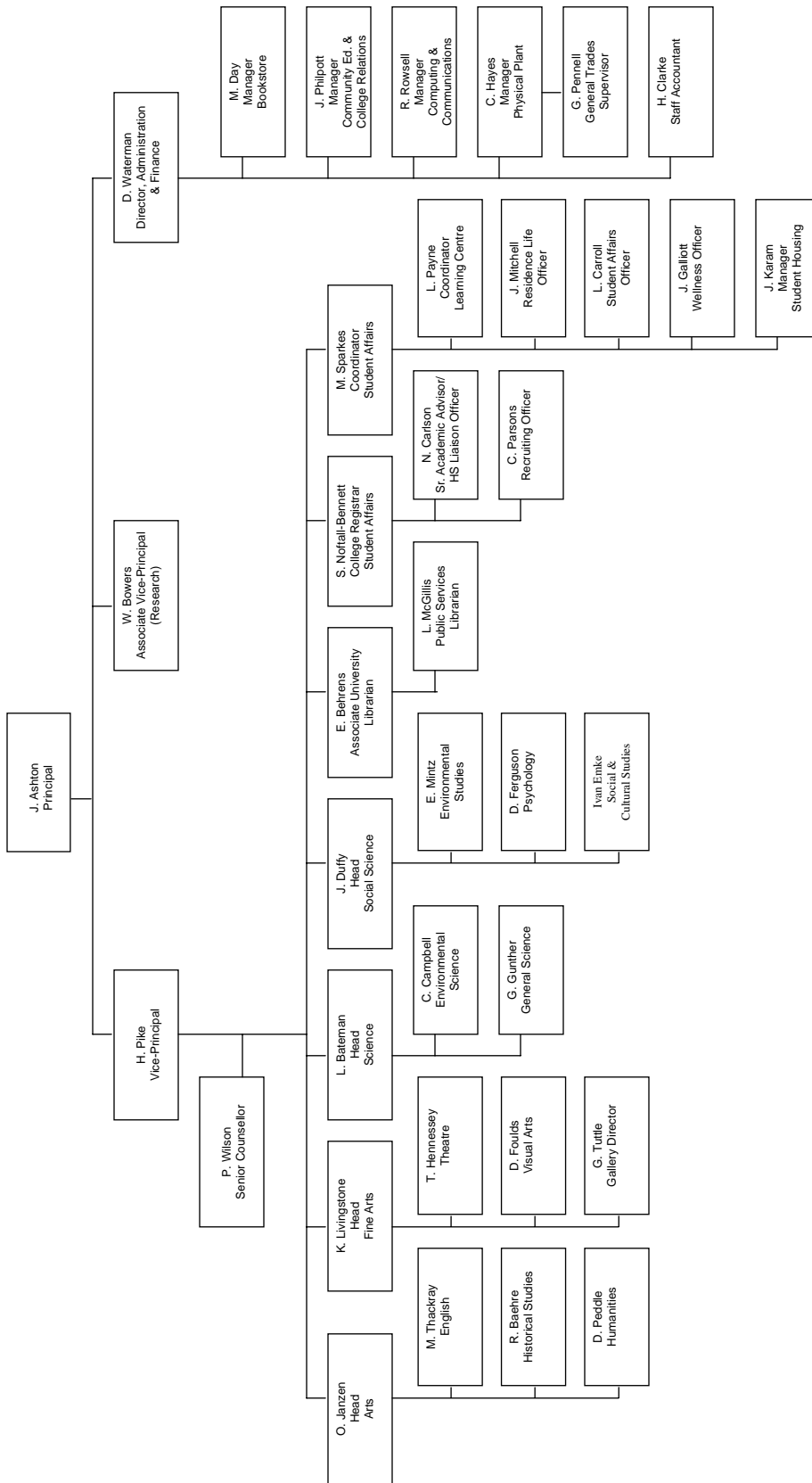
# Organizational Chart – February 2005 Memorial University of Newfoundland





# Organizational Chart – February 2005

## Sir Wilfred Grenfell College





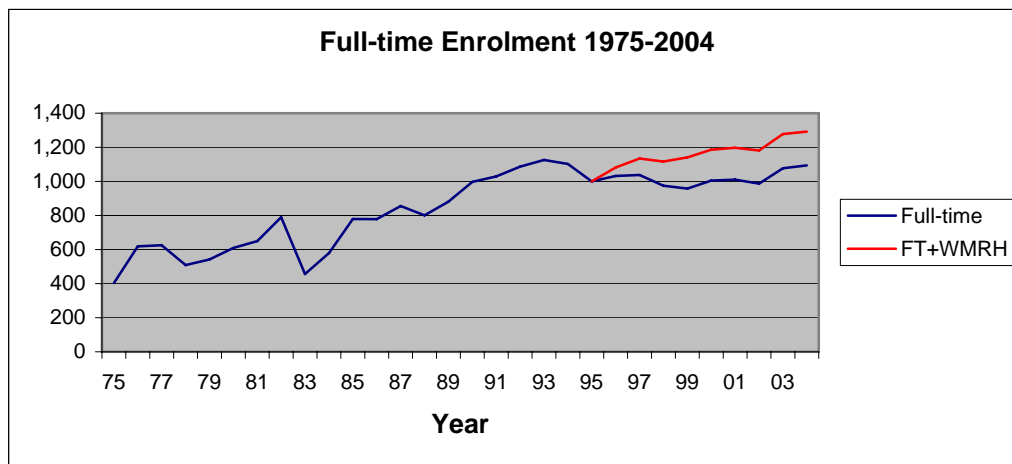
**Student  
Profile**

## Student Profile

**Table 1**  
**Fall Semester Undergraduate Enrolment – 1975 to 2004**  
 (End of regular registration period)

	Full-time					Total	Part-Time	WMRH		Grand Total	FTE*	
	Year							Full-Time	Part-Time			
	1st	2nd	3rd	4th	5th							
1975						404	0			404	404	1975
1976						619	24			643	626	1976
1977						625	28			653	633	1977
1978						509	33			542	518	1978
1979						542	36			578	552	1979
1980						609	31			640	618	1980
1981						650	22			672	656	1981
1982						790	28			818	798	1982
1983						456	35			491	466	1983
1984						579	22			601	585	1984
1985						779	40			819	790	1985
1986						778	57			835	794	1986
1987						855	44			899	868	1987
1988						801	43			844	813	1988
1989						881	30			911	890	1989
1990						997	48			1,045	1,011	1990
1991						1,029	43			1,072	1,041	1991
1992						1,086	95			1,181	1,113	1992
1993						1,126	69			1,195	1,146	1993
1994						1,102	32			1,134	1,111	1994
1995						1,000	98			1,098	1,028	1995
1996						1,032	83	50	0	1,165	1,106	1996
1997						1,038	52	96	0	1,186	1,149	1997
1998	437	268	135	103	32	975	44	141	2	1,162	1,129	1998
1999	444	221	139	109	45	958	56	183	1	1,198	1,157	1999
2000	470	242	138	116	39	1,005	56	181	7	1,249	1,204	2000
2001	431	282	156	100	41	1,010	66	187	7	1,270	1,218	2001
2002	409	267	142	121	48	987	51	194	2	1,234	1,196	2002
2003	459	290	175	103	50	1,077	68	201	6	1,352	1,299	2003
2004	416	335	167	134	42	1,094	51	198	3	1,346	1,307	2004

- Full-time equivalent (FTE) enrolment is computed as full-time enrolment + (part-time enrolment/3.5).



## Student Profile

**Table 2**  
**Degrees Conferred – 2001 to 2004**

	2004		2003		2002		2001	
	Male	Female	Male	Female	Male	Female	Male	Female
Bachelor of Arts	15	28	8	25	5	31	11	27
Bachelor of Arts (Hons.)	2	4	5	8	1	3	1	9
Bachelor of Fine Arts (Theatre)	5	15	9	10	6	12	3	6
Bachelor of Fine Arts (Visual Arts)	5	8	11	13	6	7	13	6
Bachelor of Science	9	8	4	9	10	5	5	11
Bachelor of Science (Hons.)	2	2	2	4	1	1	2	0
<b>Total</b>	<b>38</b>	<b>65</b>	<b>39</b>	<b>69</b>	<b>29</b>	<b>59</b>	<b>35</b>	<b>59</b>
<b>Total Male and Female</b>	<b>103</b>		<b>108</b>		<b>88</b>		<b>94</b>	

**Table 3**  
**Degrees Conferred by Degree and First Major – 2001 to 2004**

	2004		2003		2002		2001	
	Male	Female	Male	Female	Male	Female	Male	Female
<b>Arts</b>								
Cognitive Studies	0	0	0	0	0	0	0	0
English	2	9	0	6	2	11	2	9
Environmental Studies	6	2	5	3	2	3	3	6
Historical Studies	1	1	1	2	0	1	2	0
Humanities	1	0	0	1	0	0	3	0
Psychology	6	16	7	20	2	7	2	21
Social/Cultural Studies	1	4	0	1	0	2	0	0
<b>Sub-total</b>	<b>17</b>	<b>32</b>	<b>13</b>	<b>33</b>	<b>6</b>	<b>34</b>	<b>12</b>	<b>36</b>
<b>Total Male and Female</b>	<b>49</b>		<b>46</b>		<b>40</b>		<b>48</b>	
<b>Fine Arts</b>								
Theatre	5	15	9	10	6	12	3	6
Visual Arts	5	8	11	13	6	7	13	6
<b>Sub-total</b>	<b>10</b>	<b>23</b>	<b>20</b>	<b>23</b>	<b>12</b>	<b>19</b>	<b>16</b>	<b>12</b>
<b>Total Male and Female</b>	<b>33</b>		<b>43</b>		<b>31</b>		<b>28</b>	
<b>Science</b>								
Environmental Science								
Biology	9	5	2	11	8	4	6	9
Chemistry	2	2	4	2	3	2	1	2
General Science	0	1	0	0	0	0	0	0
Psychology	0	2	0	0	0	0	0	0
<b>Sub-total</b>	<b>11</b>	<b>10</b>	<b>6</b>	<b>13</b>	<b>11</b>	<b>6</b>	<b>7</b>	<b>11</b>
<b>Total Male and Female</b>	<b>21</b>		<b>19</b>		<b>17</b>		<b>18</b>	
<b>Grand Total</b>	<b>38</b>	<b>65</b>	<b>39</b>	<b>69</b>	<b>29</b>	<b>59</b>	<b>35</b>	<b>59</b>
<b>Grand Total Male and Female</b>	<b>103</b>		<b>108</b>		<b>88</b>		<b>94</b>	

## Student Profile

**Table 4**  
**Full-time Undergraduate Student Enrolment by First Degree, First Major and Year of Study – Fall 2004**  
 (End of drop period)

Full-time Students						
Degree Sought	1 <sup>st</sup> Year	2 <sup>nd</sup> Year	3 <sup>rd</sup> Year	4 <sup>th</sup> Year	5 <sup>th</sup> Year	Total
<b>Bachelor of Arts</b>						
English	10	20	15	30	4	79
Environmental Studies	13	18	8	7	3	49
Historical Studies	2	5	4	3	2	16
Humanities	1	2	1	1	1	6
Psychology	19	15	14	24	5	77
Social/Cultural Studies	9	7	10	5	0	31
Other Arts/Unspecified Arts	25	13	8	4	5	55
<b>Sub-total</b>	<b>79</b>	<b>80</b>	<b>60</b>	<b>74</b>	<b>20</b>	<b>312</b>
<b>Bachelor of Fine Arts</b>						
Theatre	16	32	14	14	3	79
Visual Arts	18	24	22	17	3	84
Unspecified Fine Arts	0	0	0	0	0	0
<b>Sub-total</b>	<b>34</b>	<b>56</b>	<b>36</b>	<b>31</b>	<b>6</b>	<b>163</b>
<b>Bachelor of Science</b>						
Environmental Science						
Environmental Science – Biology	12	12	19	8	5	56
Environmental Science - Chemistry	2	7	4	6	0	19
Forestry (UNB)*	1	1	0	0	0	2
Psychology	6	14	6	3	3	32
Other Science/Unspecified Science	39	29	11	6	0	85
<b>Sub-total</b>	<b>60</b>	<b>63</b>	<b>40</b>	<b>23</b>	<b>8</b>	<b>194</b>
Not Specified/Not Applicable/other	131	74	17	4	8	235
Pre-Specializations	110	60	11	2	0	183
<b>Sub-total</b>	<b>241</b>	<b>134</b>	<b>28</b>	<b>6</b>	<b>8</b>	<b>418</b>
<b>Grand Total</b>	<b>414</b>	<b>333</b>	<b>164</b>	<b>134</b>	<b>42</b>	<b>1,087</b>

\* See NOTES at the end of this section.

## Student Profile

**Table 5**  
**Full-time Undergraduate Student Enrolment by Degree Sought,**  
**First Major and Gender**  
**Fall Semester**  
 (End of Drop Period)

Degree Sought	2004			2003		
	Male	Female	Total	Male	Female	Total
<b>Bachelor of Arts</b>						
English	25	54	79	20	55	75
Environmental Studies	20	29	49	24	16	40
Historical Studies	6	10	16	8	12	20
Humanities	2	4	6	3	3	6
Psychology	16	62	78	23	75	98
Social/Cultural Studies	7	24	31	4	16	20
Other Arts/Unspecified Arts	23	31	54	26	36	62
<b>Sub-total</b>	<b>99</b>	<b>214</b>	<b>313</b>	<b>108</b>	<b>213</b>	<b>321</b>
	<b>31.6%</b>	<b>68.4%</b>		<b>33.6%</b>	<b>66.4%</b>	
<b>Bachelor of Fine Arts</b>						
Theatre	26	53	79	24	53	77
Visual Arts	27	57	84	23	55	78
Unspecified Fine Arts	0	0	0	1	0	1
<b>Sub-total</b>	<b>53</b>	<b>110</b>	<b>163</b>	<b>48</b>	<b>108</b>	<b>156</b>
	<b>32.5%</b>	<b>67.5%</b>		<b>30.8%</b>	<b>69.2%</b>	
<b>Bachelor of Science</b>						
Environmental Science	0	0	0	0	0	0
Environmental Science – Biology	27	28	55	32	24	56
Environmental Science - Chemistry	8	11	19	11	12	23
Forestry (UNB)*	2	0	2	5	0	5
Psychology	14	20	34	7	11	18
Other Science/Unspecified Science	40	44	84	46	34	80
<b>Sub-total</b>	<b>91</b>	<b>103</b>	<b>194</b>	<b>101</b>	<b>81</b>	<b>182</b>
	<b>46.9%</b>	<b>53.1%</b>		<b>55.5%</b>	<b>44.5%</b>	
Not Specified/Not Applicable/Other	94	140	234	85	156	241
Pre-Specializations	45	138	183	47	127	174
<b>Sub-total</b>	<b>139</b>	<b>278</b>	<b>417</b>	<b>132</b>	<b>283</b>	<b>415</b>
	<b>33.3%</b>	<b>66.7%</b>		<b>31.8%</b>	<b>68.2%</b>	
<b>Grand Total</b>	<b>382</b>	<b>705</b>	<b>1,087</b>	<b>389</b>	<b>685</b>	<b>1,074</b>
	<b>35.1%</b>	<b>64.9%</b>		<b>36.2%</b>	<b>63.8%</b>	

\* See NOTES at the end of this section.

## Student Profile

**Table 5 (Cont'd)**  
**Full-time Undergraduate Student Enrolment by Degree Sought,**  
**First Major and Gender**  
**Fall Semester**  
 (End of Drop Period)

Degree Sought	2002			2001		
	Male	Female	Total	Male	Female	Total
<b>Bachelor of Arts</b>						
English	15	45	60	15	49	64
Environmental Studies	23	12	35	19	11	30
Historical Studies	5	9	14	4	4	8
Humanities	4	3	7	3	6	9
Psychology	27	91	118	31	97	128
Social/Cultural Studies	1	10	11	4	13	17
Other Arts/Unspecified Arts	22	37	59	18	39	57
<b>Sub-total</b>	<b>97</b>	<b>207</b>	<b>304</b>	<b>94</b>	<b>219</b>	<b>313</b>
	<b>31.9%</b>	<b>68.1%</b>		<b>30.0%</b>	<b>70.0%</b>	
<b>Bachelor of Fine Arts</b>						
Theatre	20	52	72	24	55	79
Visual Arts	31	56	87	31	45	76
Unspecified Fine Arts	0	0	0	0	0	0
<b>Sub-total</b>	<b>51</b>	<b>108</b>	<b>159</b>	<b>55</b>	<b>100</b>	<b>155</b>
	<b>32.1%</b>	<b>67.9%</b>		<b>35.5%</b>	<b>64.5%</b>	
<b>Bachelor of Science</b>						
Environmental Science						
Environmental Science – Biology	27	32	59	23	29	52
Environmental Science - Chemistry	16	8	24	14	11	25
Forestry (UNB)*	5	0	5	14	2	16
Psychology	1	0	1	0	0	0
Other Science/Unspecified Science	25	35	60	41	44	85
<b>Sub-total</b>	<b>74</b>	<b>75</b>	<b>149</b>	<b>92</b>	<b>86</b>	<b>178</b>
	<b>49.7%</b>	<b>50.3%</b>		<b>51.7%</b>	<b>48.3%</b>	
Not Specified/Not Applicable/Other	70	128	198	58	114	172
Pre-Specializations	54	109	163	66	104	170
<b>Sub-total</b>	<b>124</b>	<b>237</b>	<b>361</b>	<b>124</b>	<b>218</b>	<b>342</b>
	<b>34.3%</b>	<b>65.7%</b>		<b>36.3%</b>	<b>63.7%</b>	
<b>Grand Total</b>	<b>346</b>	<b>627</b>	<b>973</b>	<b>365</b>	<b>623</b>	<b>988</b>
	<b>35.6%</b>	<b>64.4%</b>		<b>36.9%</b>	<b>63.1%</b>	

\* See NOTES at the end of this section.

**Student Profile**

**Table 6**  
**Undergraduate Student Enrolment by Age and Gender, Fall Semester**  
 (End of Drop Period)

Age	2004			2003			2002			2001		
	Male	Female	Total	Male	Female	Total	Male	Female	Total	Male	Female	Total
<b>Full-time</b>												
16-18	88	199	287	125	212	337	97	181	278	119	188	307
19-20	135	258	393	121	251	372	111	230	341	122	222	344
21-23	105	168	273	91	138	229	94	144	238	82	153	235
24-25	23	31	54	28	37	65	23	35	58	22	21	43
26-30	17	26	43	19	20	39	14	14	28	14	17	31
>30	14	23	37	5	27	32	7	23	30	6	22	28
<b>Sub-total</b>	<b>382</b>	<b>705</b>	<b>1,087</b>	<b>389</b>	<b>685</b>	<b>1,074</b>	<b>346</b>	<b>627</b>	<b>973</b>	<b>365</b>	<b>623</b>	<b>988</b>
<b>Pct.</b>	<b>35.4%</b>	<b>64.6%</b>		<b>36.2%</b>	<b>63.8%</b>		<b>35.6%</b>	<b>64.4%</b>		<b>36.9%</b>	<b>63.1%</b>	
<b>Part-time</b>												
16-18	0	1	1	0	0	0	0	0	0	2	2	4
19-20	1	1	2	1	3	4	1	4	5	2	5	7
21-23	5	10	15	8	9	17	5	2	7	3	6	9
24-25	3	6	9	1	5	6	3	2	5	0	7	7
26-30	3	8	11	7	5	12	4	7	11	7	7	14
>30	6	10	16	9	19	28	10	16	26	18	16	34
<b>Sub-total</b>	<b>18</b>	<b>36</b>	<b>54</b>	<b>26</b>	<b>41</b>	<b>67</b>	<b>23</b>	<b>31</b>	<b>54</b>	<b>32</b>	<b>43</b>	<b>75</b>
<b>Pct.</b>	<b>33.3%</b>	<b>66.7%</b>		<b>38.8%</b>	<b>61.2%</b>		<b>42.6%</b>	<b>57.4%</b>		<b>42.7%</b>	<b>57.3%</b>	
<b>All Students</b>												
<b>Total</b>	<b>400</b>	<b>741</b>	<b>1,141</b>	<b>415</b>	<b>726</b>	<b>1,141</b>	<b>369</b>	<b>658</b>	<b>1,027</b>	<b>387</b>	<b>666</b>	<b>1,063</b>
<b>Pct.</b>	<b>35.1%</b>	<b>64.9%</b>		<b>36.4%</b>	<b>63.6%</b>		<b>35.9%</b>	<b>64.1%</b>		<b>36.4%</b>	<b>63.6%</b>	



## Student Profile

**Table 7**  
**Full-time Undergraduate Student Enrolment by Major**  
**and Year, Fall Semester**  
 (End of Drop Period)

<b>Major*</b>	<b>2004</b>	<b>2003</b>	<b>2002</b>	<b>2001</b>
Biochemistry	1	0	0	1
Biology	1	1	1	1
Business Administration	16	3	1	3
Chemistry	1	2	0	3
Education	0	2	2	1
Engineering	1	1	1	0
Engineering – Term A/B	16	22	18	23
English	80	75	60	65
Environmental Science	0	0	1	1
Environmental Science – Biology	56	56	60	52
Environmental Science – Chemistry	19	23	24	25
Environmental Studies	49	41	36	30
Forestry	2	5	5	15
French	2	3	1	1
Geography	1	2	1	1
Historical Studies	15	20	14	10
History	0	1	0	0
Humanities	6	7	7	9
Kinesiology	0	2	0	0
Mathematics	1	0	1	2
Nursing (Collaborative)	2	1	1	2
Physical Education	1	1	1	0
Pre-Biochemistry	5	6	3	4
Pre-Biology	13	10	9	15
Pre-Business Administration	13	17	16	14
Pre-Chemistry	4	1	2	3
Pre-Earth Science	1	0	1	1
Pre-Education	65	73	71	54
Pre-Nursing (Post R.N.)	0	0	0	1
Pre-Pharmacy	30	42	27	28
Pre-Physical Education	0	0	0	8
Pre-Psychology	3	1	3	5
Pre-Social Work	13	14	13	15
Psychology	109	118	120	129
Social/Cultural Studies	31	20	11	17
Sociology/Anthropology	0	1	1	3
Theatre	79	77	72	79
Visual Arts	84	79	87	77
Not Specified/Not Applicable/Other	330	360	310	304
<b>Grand Total</b>	<b>1,097</b>	<b>1,087</b>	<b>981</b>	<b>1,002</b>

\* Table includes second majors; as a result, some double counting occurs.

<b>Student Profile</b>
------------------------

**Table 7A**  
**Full-time Undergraduate Student Enrolment by Major**  
**and Year of Study, Fall 2004**  
 (End of Drop Period)

<b>Major*</b>	<b>1<sup>st</sup> Year</b>	<b>2<sup>nd</sup> Year</b>	<b>3<sup>rd</sup> Year</b>	<b>4<sup>th</sup> Year</b>	<b>5<sup>th</sup> Year</b>	<b>Total</b>
Biochemistry	0	1	0	0	0	1
Biology	0	1	0	0	0	1
Business Administration	0	9	5	1	1	16
Chemistry	0	1	0	0	0	1
Engineering	0	0	0	0	1	1
Engineering – Term A/B	11	4	1	0	0	16
English	10	21	15	30	4	80
Environmental Science – Biology	12	12	19	8	5	56
Environmental Science – Chemistry	2	7	4	6	0	19
Environmental Studies	13	18	8	7	3	49
Forestry	1	1	0	0	0	2
French	0	0	2	0	0	2
General Science	1	7	7	6	0	21
Geography	0	0	0	1	0	1
German	0	0	0	1	0	1
Historical Studies	2	5	4	2	2	15
Humanities	1	2	1	1	1	6
Nursing (Collaborative)	0	0	2	0	0	2
Philosophy	0	0	1	0	1	2
Physical Education	1	0	0	0	0	1
Pre-Biochemistry	5	0	0	0	0	5
Pre-Biology	9	2	2	0	0	13
Pre-Business Administration	24	9	2	0	0	35
Pre-Chemistry	4	0	0	0	0	4
Pre-Education	28	30	5	2	0	65
Pre-Earth Science	1	0	0	0	0	1
Pre-Pharmacy	18	10	2	0	0	30
Pre-Psychology	3	0	0	0	0	3
Pre-Social Work	7	5	0	0	0	12
Primary Technology Year	1	0	0	0	0	1
Psychology	25	29	20	28	8	110
Pure Mathematics	0	2	0	0	0	2
Russian Language and Literature	0	0	0	1	0	1
Social/Cultural Studies	9	7	10	5	0	31
Theatre	16	32	14	14	3	79
Visual Arts	18	24	22	17	3	84
Not specified/not applicable/other	193	96	19	8	12	328
<b>Grand Total</b>	<b>415</b>	<b>334</b>	<b>166</b>	<b>138</b>	<b>44</b>	<b>1,097</b>

\* Table includes second majors; as a result, some double counting occurs.

## Student Profile

**Table 7B**  
**Full-time Undergraduate Student Enrolment by Major and Gender, Fall 2004**  
 (End of Drop Period)

Major*	Male	Female	Total
Biochemistry	0	1	1
Biology	1	0	1
Business Administration	7	9	16
Chemistry	0	1	1
Engineering	1	0	1
Engineering – Term A/B	13	3	16
English	25	55	80
Environmental Science – Biology	27	29	56
Environmental Science – Chemistry	8	11	19
Environmental Studies	20	29	49
Forestry	2	0	2
French	0	2	2
General Science	6	14	20
Geography	1	0	1
German	0	1	1
Historical Studies	5	10	15
Humanities	2	4	6
Nursing (Collaborative)	0	2	2
Philosophy	2	0	2
Physical Education	1	0	1
Pre-Biochemistry	1	4	5
Pre-Biology	3	10	13
Pre-Business Administration	12	23	35
Pre-Chemistry	2	2	4
Pre-Education	4	61	65
Pre-Earth Science	1	0	1
Pre-Pharmacy	7	23	30
Pre-Psychology	1	2	3
Pre-Social Work	1	12	13
Primary Technology Year	1	0	1
Psychology	30	79	109
Pure Mathematics	0	1	1
Russian Language and Literature	0	1	1
Social/Cultural Studies	7	24	31
Theatre	26	53	79
Visual Arts	27	57	84
Not specified/not applicable/other	140	190	330

\* Table includes second majors; as a result, some double counting occurs.

## Student Profile

**Table 8**  
**Distribution of Full-time Undergraduate Enrolments by Region, Fall Semester**  
 (End of Drop Period)

Postal Code	Area	2004	2003	2002	2001
<b>Newfoundland</b>					
A0A, A0B	St. John's Areas #1 and #2	14	12	21	19
A1A-A1G	St. John's	31	28	29	37
A1K	Torbay	3	2	2	0
A1L	Paradise	1	1	3	0
A1M	Portugal Cove/St. Phillips	1	0	0	0
A1N	Mount Pearl	7	4	8	8
A1S	Goulds	2	1	5	5
A1W-A1X	Conception Bay South	4	5	6	3
A1Y	Carbonear	2	3	1	1
A0C, A0E, A5A	Clarenville North & South	8	11	15	15
A0G, A1V	Gander & Area	30	28	29	35
A0H, A2A, A2B	Grand Falls & Area	23	33	28	36
A0J	Springdale Area	26	32	27	26
A0K, A8A	Deer Lake Area, Labrador & Northern Pen.	192	148	117	113
A0N, A2N	Stephenville & Area	126	124	100	97
A0L, A2H	Corner Brook & Area	433	426	390	394
A0M	Channel/Port aux Basques	22	39	40	41
A0P	Goose Bay	2	1	2	3
A2Z	Labrador City	4	2	3	3
A0R	Churchill Falls-Wabush	3	1	0	0
	Other	31	77	87	89
<b>Sub-total – Newfoundland</b>		<b>965</b>	<b>978</b>	<b>913</b>	<b>932</b>
<b>By Province</b>					
	Alberta	5	7	6	4
	British Columbia	7	4	4	4
	New Brunswick	7	5	4	3
	Nova Scotia	47	31	25	19
	Ontario	26	23	10	12
	Prince Edward Island	6	6	3	7
	Quebec	2	2	3	0
	Other	1	1	1	0
<b>Sub-total – Rest of Canada</b>		<b>101</b>	<b>79</b>	<b>56</b>	<b>49</b>
<b>By Country</b>					
	Austria	1	1	1	0
	Belize	7	4	0	0
	China	3	0	0	0
	France	0	0	0	1
	Hong Kong	0	1	0	0
	Japan	1	1	0	0
	Mexico	2	0	0	0
	Namibia	0	1	0	0
	Nigeria	1	1	0	0
	United Kingdom	1	0	0	0
	United States	5	8	3	6
<b>Sub-total – International</b>		<b>21</b>	<b>17</b>	<b>4</b>	<b>7</b>
<b>Grand Total</b>		<b>1,087</b>	<b>1,074</b>	<b>973</b>	<b>988</b>

## Student Profile

**Table 9**  
**Class Size Distribution by Division and Discipline\***  
**Academic Year 2003-04**

	1-10	11-20	21-30	31-40	41-50	51-60	>60	Total
<b>Division of Arts</b>								
Classics	0	1	0	1	1	0	0	3
English	3	6	7	32	1	0	0	49
French and Spanish	0	4	2	3	0	0	0	9
History	4	3	5	3	0	0	0	15
Humanities	1	1	0	0	0	0	0	2
Philosophy	0	3	2	0	2	0	0	7
Religious Studies	0	0	1	2	3	0	0	6
Women's Studies	0	0	0	0	0	0	1	1
<b>Sub-total – Arts</b>	<b>8</b>	<b>18</b>	<b>17</b>	<b>41</b>	<b>7</b>	<b>0</b>	<b>1</b>	<b>92</b>
<b>Division of Fine Arts</b>								
Theatre	16	14	1	4	0	0	0	35
Visual Arts	11	18	9	1	0	2	0	41
<b>Sub-total – Fine Arts</b>	<b>27</b>	<b>32</b>	<b>10</b>	<b>5</b>	<b>0</b>	<b>2</b>	<b>0</b>	<b>76</b>
<b>Division of Science</b>								
Biochemistry	0	1	0	0	0	1	0	2
Biology	0	1	3	2	5	2	0	13
Chemistry	3	5	1	7	0	1	0	17
Computer Science	1	1	0	0	0	0	0	2
Earth Science	0	1	0	0	0	1	0	2
Environmental Science	17	5	2	4	1	1	0	30
Mathematics	5	7	6	7	3	3	2	33
Physics	2	1	2	2	3	0	0	10
Science	2	0	1	0	0	0	0	3
<b>Sub-total – Science</b>	<b>30</b>	<b>22</b>	<b>15</b>	<b>22</b>	<b>12</b>	<b>9</b>	<b>2</b>	<b>112</b>
<b>Division of Social Science</b>								
Anthropology	1	1	0	2	2	0	1	7
Business	1	3	9	0	2	2	0	17
Economics	0	1	0	1	3	0	0	5
Education	1	0	0	0	0	0	0	1
Environmental Studies	6	4	0	1	0	0	0	11
Folklore	0	2	3	4	1	1	1	12
Geography	3	2	3	0	4	0	0	12
Physical Education	1	1	0	0	0	0	0	2
Political Science	0	0	1	1	3	0	0	5
Psychology	2	11	9	7	1	1	6	37
Social/Cultural Studies	3	0	0	0	0	0	0	3
Sociology	1	2	4	2	3	1	0	13
<b>Sub-total – Social Science</b>	<b>19</b>	<b>27</b>	<b>29</b>	<b>18</b>	<b>19</b>	<b>5</b>	<b>8</b>	<b>125</b>
<b>Grand Total</b>	<b>84</b>	<b>99</b>	<b>71</b>	<b>86</b>	<b>38</b>	<b>16</b>	<b>11</b>	<b>405</b>

\* Excluding Distance Education Courses

**Student Profile**

**Table 10**  
**Western Memorial Regional Hospital**  
**Nursing (Collaborative) Enrolment by Age and Gender**  
**Fall Semester**  
 (End of Drop Period)

**Full-time**

Age	2004			2003			2002			2001		
	Male	Female	Total	Male	Female	Total	Male	Female	Total	Male	Female	Total
16-18	3	8	11	0	14	14	0	13	13	0	9	9
19-20	1	48	49	1	41	42	1	43	44	6	51	57
21-23	4	60	64	6	78	84	4	78	82	4	71	75
24-25	1	17	18	1	13	14	2	11	13	4	11	15
26-30	2	24	26	3	22	25	2	19	21	3	19	22
>30	4	26	30	2	20	22	1	18	19	0	10	10
<b>Total</b>	<b>15</b>	<b>183</b>	<b>198</b>	<b>13</b>	<b>188</b>	<b>201</b>	<b>10</b>	<b>182</b>	<b>192</b>	<b>17</b>	<b>171</b>	<b>188</b>

**Table 10A**  
**Western Memorial Regional Hospital**  
**Nursing (Collaborative) Enrolment by Year of Study**  
**Fall Semester**  
 (End of Drop Period)

**Full-time**

	Fall 2004	Fall 2003	Fall 2002	Fall 2001
1 <sup>st</sup> year	15	18	21	13
2 <sup>nd</sup> year	40	39	36	45
3 <sup>rd</sup> year	38	42	53	47
4 <sup>th</sup> year	34	48	42	23
5 <sup>th</sup> year	71	54	40	60
<b>Total</b>	<b>198</b>	<b>201</b>	<b>192</b>	<b>188</b>

## Student Profile

**Table 11**  
**Western Memorial Hospital**  
**Nursing (Collaborative) Full-time Enrolment by Region**  
**Fall Semester**  
 (End of Drop Period)

Postal Code	Area	2004	2003	2002	2001
<b>Newfoundland</b>					
A0A	St. John's Area #1	1	2	3	1
A1A-A1G	St. John's	0	1	2	2
A1L	Paradise	1	1	0	0
A1N	Mount Pearl	1	1	1	0
A1W-A1X	Conception Bay South	0	0	0	1
A0C	Clarenville North	0	0	0	0
A0E	Clarenville South	1	1	2	1
A0G	Gander Area	5	6	5	6
A1V	Gander	0	1	0	2
A0H	Grand Falls Area	10	6	5	3
A2A	Grand Falls	3	1	2	3
A2B	Grand Falls-Windsor	1	2	2	2
A0J	Springdale Area	7	9	8	9
A0K	Deer Lake Area, Labrador & Northern Pen.	49	31	31	42
A0N	Stephenville Area	11	15	13	10
A2N	Stephenville	3	4	4	4
A0L	Corner Brook Area	19	18	16	14
A2H	Corner Brook	57	61	59	55
A0M	Channel/Port aux Basques	11	15	13	12
A0P	Goose Bay	0	0	1	0
A2V	Labrador City	0	0	1	1
A0R	Not on File	5	17	15	13
<b>Sub-total – Newfoundland</b>		<b>185</b>	<b>192</b>	<b>183</b>	<b>181</b>
<b>By Province</b>					
	Alberta	1	2	1	1
	British Columbia	1	1	1	1
	Northwest Territories	1	1	1	1
	Nova Scotia	2	0	0	0
	Ontario	7	4	5	4
	Prince Edward Island	0	1	1	0
<b>Sub-total – Rest of Canada</b>		<b>12</b>	<b>9</b>	<b>9</b>	<b>7</b>
<b>By Country</b>					
	South Korea	1	0	0	0
<b>Grand Total</b>					
		<b>198</b>	<b>201</b>	<b>192</b>	<b>188</b>

## NOTES

The data found in the Student Profile section of the *Fact Book* have been compiled by the Office of the Registrar. The following definitions (as found in the *University Calendar*) and explanations should be noted:

### *Definitions:*

1. Undergraduate students are categorized as follows:
  - first-year students have earned fewer than 18 credit hours;
  - second-year students have earned from 18 to 47 credit hours inclusive;
  - third-year students have earned from 48 to 77 credit hours inclusive;
  - fourth-year students have earned from 78 to 107 credit hours inclusive; and
  - fifth-year students have earned not fewer than 108 credit hours.
2. Full-time undergraduate students: students who have been admitted to this university and who are registered for the duration of any semester in at least 9 credit hours or at least 5 credit hours in a session are deemed full-time students. (reference: university *Calendar* 2004-2005, page 57).

### *Explanations:*

1. Only enrolment data from the **fall semester** are shown in this *Fact Book*.
2. Enrolment data shown in Table 1 differ from enrolment data shown in other tables. The data in Table 1 are compiled at the end of the regular registration period. *All other enrolment data are taken at the end of the drop period.*
3. Pre-specializations include: Business Term A/B, Engineering Term A/B, Pre-Biochemistry, Pre-Biochemistry (Dietetics), Pre-Biochemistry (Nutrition), Pre-Biology, Pre-Business Administration, Pre-Chemistry, Pre-Earth Science, Pre-Education (Elementary), Pre-Education (Primary), Pre-Medicine, Pre-Nursing, Pre-Pharmacy, Pre-Physical Education, Pre-Psychology, Pre-Social Work.
4. In accordance with Memorial University of Newfoundland and the University of New Brunswick, the first two years of the Bachelor of Science in Forestry from the University of New Brunswick may be completed at Sir Wilfred Grenfell College.
5. Tables 7, 7A, and 7B count double majors; as a result, the totals are slightly higher than in other tables which count first majors only.





**Human  
Resources  
Profile**

## Human Resources Profile

**Table 12**  
**Permanent (P) and Contractual (C) Employees by Pay Group**  
 (As at March 31)

Pay Group*	2004		2003		2002		2001	
	P	C	P	C	P	C	P	C
<b>Staff</b>								
CUPE	41	25	41	24	43	25	42	26
NAPE – Custodial	10	5	12	3	12	3	13	4
NAPE – Maintenance	6	0	6	1	6	1	6	1
NAPE – Security	7	5	8	4	8	4	8	4
Non-Bargaining (Common Pay Scale)	10	6	12	4	10	4	10	2
Non-Bargaining (Security/Maintenance)	1	0	1	0	1	0	1	0
Unclassified	0	3	0	4	0	2	0	2
Management	7	0	8	0	7	1	6	2
Executive	2	0	2	0	2	0	2	0
Professional	2	2	2	1	2	1	2	1
Agencies	0	3	0	2	0	2	0	2
<b>Total Staff</b>	<b>86</b>	<b>49</b>	<b>92</b>	<b>43</b>	<b>91</b>	<b>43</b>	<b>90</b>	<b>44</b>
<b>Total Permanent and Contractual Staff</b>	<b>135</b>		<b>135</b>		<b>134</b>		<b>134</b>	
<b>Faculty</b>								
Faculty – MUNFA	59	12	58	16	57	17	56	19
Faculty – Non-Bargaining	0	8	1	8	1	6	1	4
Faculty – Adjuncts	0	1	0	2	0	2	0	2
Faculty – Division Heads/Administration	7	0	6	0	5	0	6	0
Faculty – Exceptions	0	0	0	0	0	0	0	0
<b>Total Faculty</b>	<b>66</b>	<b>21</b>	<b>65</b>	<b>26</b>	<b>63</b>	<b>25</b>	<b>63</b>	<b>25</b>
<b>Total Permanent and Contractual Faculty</b>	<b>87</b>		<b>91</b>		<b>88</b>		<b>88</b>	
<b>Grand Total</b>	<b>152</b>	<b>70</b>	<b>157</b>	<b>69</b>	<b>154</b>	<b>68</b>	<b>153</b>	<b>69</b>
<b>Grand Total Permanent and Contractual Employees</b>	<b>222</b>		<b>226</b>		<b>222</b>		<b>222</b>	

\* Excludes employees on long-term disability, includes per-course instructors.

Source: Department of Human Resources

## Human Resources Profile

**Table 13**  
**Employees by Division**

Division	Current 2003-2004		
	Faculty	Staff	Total Faculty And Staff
Arts	17	2	19
Fine Arts	14	9.7	23.7
Science	22	21	43
Social Science	18	3	21
Academic Support	5	15	20
Principal's Office	3	2	5
Library	2	6	8
Registrar's Office	0	4	4
Student Recruitment	0	3	3
Administration and Finance	0	56.2	56.2
Director's Office	0	3	3
Bursar's Office	0	3	3
Campus Enforcement and Patrol	0	10	10
Community Ed. Administration	0	6	6
Computing and Communications	0	8	8
Conference Marketing	0	1	1
Resource Centre	0	2	2
Custodial Services	0	14	14
Physical Plant – Maintenance	0	8.2	8.2
Public Relations/WHCC	0	1	1
Student Affairs and Services	2	11.5	13.5
Student Affairs	0	6.5	6.5
Counselling	2	0	2
Wellness & Recreation	0	1	1
Supplemental Instruction	0	1	1
Residence	0	3	3
<b>Grand Total*</b>	<b>78</b>	<b>118.4</b>	<b>196.4</b>

\* The difference in totals between Tables 12 and 13 is due to slightly different methodologies for counting employees (Table 13 excludes per-course instructors and counts full-time equivalences) and different census dates of data extraction.

Source: SWGC

## Human Resources Profile

**Table 14**  
**Academic Staff by Rank and Gender\***

	March 31, 2004		March 31, 2003		March 31, 2002		March 31, 2001	
	Female	Male	Female	Male	Female	Male	Female	Male
<b>Rank</b>								
Full Professor	1	17	1	17	0	15	0	13
Associate Professor	4	32	4	34	4	33	6	33
Assistant Professor	8	10	9	13	8	16	6	17
Lecturer	1	3	3	0	2	1	2	5
Librarian	2	0	2	0	3	0	3	0
<b>Grand Total</b>	<b>16</b>	<b>62</b>	<b>19</b>	<b>64</b>	<b>17</b>	<b>65</b>	<b>17</b>	<b>68</b>

**Table 14A**  
**Academic Staff by Degree and Gender\***

	March 31, 2004		March 31, 2003		March 31, 2002		March 31, 2001	
	Female	Male	Female	Male	Female	Male	Female	Male
<b>PhD</b>								
Full Professor	0	13	0	13	0	11	0	9
Associate Professor	3	20	3	22	2	21	2	22
Assistant Professor	4	5	6	7	5	9	3	10
Lecturer	0	0	0	0	0	0	0	1
Librarian	0	0	0	0	0	0	0	0
<b>Masters</b>								
Full Professor	1	4	1	4	0	4	0	4
Associate Professor	1	12	1	12	2	12	3	11
Assistant Professor	4	4	3	5	2	6	3	5
Lecturer	1	3	3	0	2	1	2	4
Librarian	2	0	2	0	3	0	3	0
<b>Bachelors</b>								
Assistant Professor	0	1	0	1	0	1	0	1
<b>Unknown</b>								
	0	0	0	0	1	0	1	1
<b>Grand Total</b>	<b>16</b>	<b>62</b>	<b>19</b>	<b>64</b>	<b>17</b>	<b>65</b>	<b>17</b>	<b>68</b>

\* Permanent and contractual faculty. Excludes the following: per-course instructors; adjuncts and exceptions; employees on long-term disability.

Source: Department of Human Resources



**Financial  
Profile**

## Financial Profile

**Table 15**  
**Net Expenditures by Unit**  
 (Excluding Residences)  
 (In dollars)

	<b>2003-04</b>	<b>2002-03</b>	<b>2001-02</b>	<b>2000-01</b>
<b>Academic Program</b>	<b>7,174,552</b>	<b>6,443,249</b>	<b>6,319,361</b>	<b>5,441,178</b>
Arts	1,349,888	1,241,218	1,258,928	979,151
Fine Arts	1,648,038	1,398,855	1,323,201	1,144,534
Science	2,542,368	2,267,703	2,339,929	2,140,618
Social Science	1,634,258	1,535,473	1,397,303	1,176,875
<b>Academic Support</b>	<b>927,033</b>	<b>1,035,830</b>	<b>932,846</b>	<b>863,317</b>
Principal's Office	-17,877	89,232	37,548	29,090
Library	619,431	566,355	570,196	567,677
Registrar's Office	299,790	261,401	230,482	186,149
Senate	27,199	25,379	32,307	33,548
Other Academic Support	-11,521	93,463	62,181	46,853
<b>Administration and Finance</b>	<b>3,010,125</b>	<b>3,074,236</b>	<b>2,950,266</b>	<b>2,745,064</b>
Director's Office	144,840	186,635	213,070	228,003
Bursar's Office	115,129	112,579	109,499	119,494
Computing and Communications	684,915	766,924	640,378	632,304
Facilities Management	1,885,830	2,076,129	2,107,857	1,887,768
Community Ed. and College Relations	179,411	(68,031)	(120,858)	(122,505)
<b>Student Services</b>	<b>478,116</b>	<b>457,367</b>	<b>384,074</b>	<b>301,350</b>
Office of Student Services	261,533	239,933	221,003	205,314
Counselling	113,293	111,493	94,778	86,689
Other Student Services	103,290	105,941	68,293	9,347
<b>Total SWGC</b>	<b>\$11,589,826</b>	<b>\$11,010,682</b>	<b>\$10,586,415</b>	<b>\$9,350,909</b>

Source: FRS (Financial Record System) Six Year Histories (2000-01 & 2001-02)/Banner Finance (2002-03 & 2003-04).

## Financial Profile

**Table 16**  
**Net Expenditures by Object**  
 (Excluding Residences)  
 (In dollars)

	2003-04	2002-03	2001-02	2000-01
<b>Salaries</b>				
Academic Salaries	5,953,327	5,421,479	5,087,406	4,322,281
Administrative Salaries	4,380,584	4,136,791	3,917,513	3,574,429
Benefits	19,888	16,601	20,843	19,734
<b>Sub-total – Salaries</b>	<b>10,353,799</b>	<b>9,574,871</b>	<b>9,025,762</b>	<b>7,916,444</b>
<b>Operating</b>				
Student Assistants	127,884	135,198	128,101	96,623
Travel and Hosting	203,741	267,634	266,676	281,143
Materials and Supplies	475,698	550,845	483,983	520,949
Repair Building/Equipment	80,172	108,325	105,778	74,618
Institutional Memberships	13,010	10,742	4,572	4,054
Books, Journals, & Lib. Purchases	223,688	207,037	226,020	220,721
Fellowships and Bursaries	23,450	6,331	8,042	10,797
Telecommunications	13,191	76,273	65,244	94,855
Utilities	448,718	464,265	558,377	488,686
Rental Space/Equipment/Op. Leases	126,981	106,189	94,697	83,152
Property Tax	87,697	88,798	88,679	89,004
Insurance	23,479	22,591	15,377	13,633
Externally Contracted Services	191,987	186,459	166,858	153,760
Professional Fees	42,700	70,674	69,046	44,165
Debt Service	29,681	34,297	36,492	37,168
<b>Sub-total – Operating</b>	<b>2,112,078</b>	<b>2,335,660</b>	<b>2,317,942</b>	<b>2,213,328</b>
<b>Capital</b>				
Furniture & Equipment/ Leases	201,667	171,359	216,654	219,554
Renovations	9,097	28,056	10,920	(55,596)
<b>Sub-total – Capital</b>	<b>210,764</b>	<b>199,415</b>	<b>227,574</b>	<b>163,958</b>
<b>Gross Expenditures</b>	<b>12,676,641</b>	<b>12,109,944</b>	<b>11,571,280</b>	<b>10,293,740</b>
<b>External Revenues</b>	<b>1,086,815</b>	<b>1,099,262</b>	<b>984,865</b>	<b>942,831</b>
<b>Grand Total - SWGC</b>	<b>\$11,589,826</b>	<b>\$11,010,682</b>	<b>\$10,586,415</b>	<b>\$9,350,909</b>

Source: FRS (Financial Record System) Six Year Histories (2000-01 & 2001-02)/Banner Finance (2002-03 & 2003-04).



**Research  
Profile**



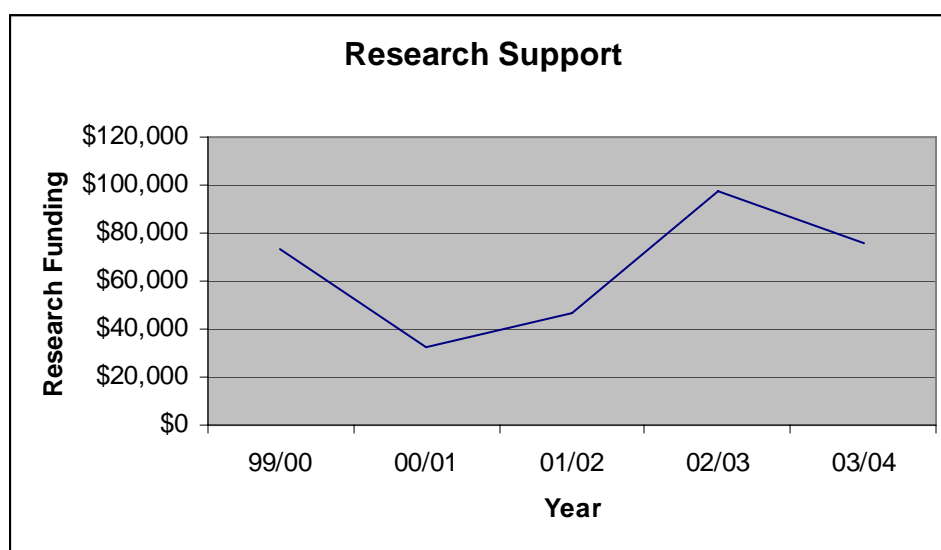
## Research Profile

**Table 17**  
**Research Support 1999-00 to 2003-04**

	2003-04		2002-03		2001-02		2000-01		1999-00	
	#	Value	#	Value	#	Value	#	Value	#	Value
Grants	8	75,833	5	60,756	5	46,930	4	26,430	5	32,920
Contracts	0	0	1	37,000	0	0	1	6,000	2	39,145
Other	0	0	0	0	0	0	0	0	1	1,185
<b>Total</b>	<b>8</b>	<b>\$75,833</b>	<b>6</b>	<b>\$97,756</b>	<b>5</b>	<b>\$46,930</b>	<b>5</b>	<b>\$32,430</b>	<b>8</b>	<b>\$73,250</b>

**Table 17A**  
**Sources of Research Funding 1999-00 to 2003-04**

	2003-04		2002-03		2001-02		2000-01		1999-00	
	#	Value	#	Value	#	Value	#	Value	#	Value
NSERC	4	36,133	2	20,000	2	20,000	2	18,930	1	6,930
SSHRC	2	15,895	1	9,885	2	22,930	0	0	0	0
Federal Government	0	0	1	37,000	0	0	1	6,000	2	39,145
Provincial Government	0	0	0	0	0	0	0	0	0	0
Canadian Non-Profit	1	2,500	1	4,000	1	4,000	2	7,500	5	27,175
Foreign Non-Profit	1	21,305	1	26,871	0	0	0	0	0	0
<b>Total</b>	<b>8</b>	<b>\$75,833</b>	<b>6</b>	<b>\$97,756</b>	<b>5</b>	<b>\$46,930</b>	<b>5</b>	<b>\$32,430</b>	<b>8</b>	<b>\$73,250</b>





**Library  
Profile**

<b>Library Profile</b>
------------------------

**Table 18**  
**Library Holdings**

	2003-04	2002-03	2001-02	2000-01
<b>Volume of Print Material</b>				
Monograph Volumes	105,699	104,674	102,205	100,116
Serial Volumes	13,534	12,826	12,356	11,904
Documents	3,730	3,720	3,700	3,620
<b>Total Print Material</b>	<b>122,963</b>	<b>121,220</b>	<b>118,261</b>	<b>115,640</b>
<b>Micro-Materials</b>				
Microfilm Reels	6,228	6,160	6,093	6,030
Microfiche (unconverted to volume equivalents)	8,119	8,027	7,929	7,818
<b>Total (converted to vol. equiv.)</b>	<b>12,027</b>	<b>11,893</b>	<b>11,757</b>	<b>11,614</b>
<b>Non-Print Materials</b>				
Audio-Visual Holdings	2,677	2,638	2,624	2,572
Current Serial Titles	486	499	571	591
<b>Total Non-Print Materials</b>	<b>3,163</b>	<b>3,137</b>	<b>3,195</b>	<b>3,163</b>

The Ferris Hodgett Library is located on Levels 2 and 3 of the Library and Computing Building, which opened in 1995, with skywalk links to the rest of the campus. Named after the college's first vice-principal, the Ferris Hodgett Library has over 115,000 books and almost 500 current subscriptions, along with collections of audio-visual materials, government documents and microforms.