

Coronavirus disease 2019 (COVID-19) Situation Report – 62

Data as reported by national authorities by 23:59 CET 21 March 2020

HIGHLIGHTS

- Four new countries/territories/areas from the African Region have reported cases of COVID-19.
- As COVID-19 cases continue to increase, many countries are requesting individuals to stay at home in self-quarantine. WHO EURO has released a guide on how to stay physically active during self-quarantine. Information can be found [here](#).
- There has been a rise in criminals disguising themselves as WHO to steal money or sensitive information. WHO urges individuals to stay alert and to verify the authenticity of the request. Information on protecting yourselves against scams as well as reporting the scam to WHO can be found [here](#).

SITUATION IN NUMBERS total (new) cases in last 24 hours

Globally

292 142 confirmed (26 069)
12 783 deaths (1600)

Western Pacific Region

94 787 confirmed (750)
3438 deaths (12)

European Region

151 293 confirmed (22 752)
7425 deaths (1426)

South-East Asia Region

1257 confirmed (278)
45 deaths (7)

Eastern Mediterranean Region

23 669 confirmed (1314)
1596 deaths (130)

Region of the Americas

19 685 confirmed (808)
252 deaths (17)

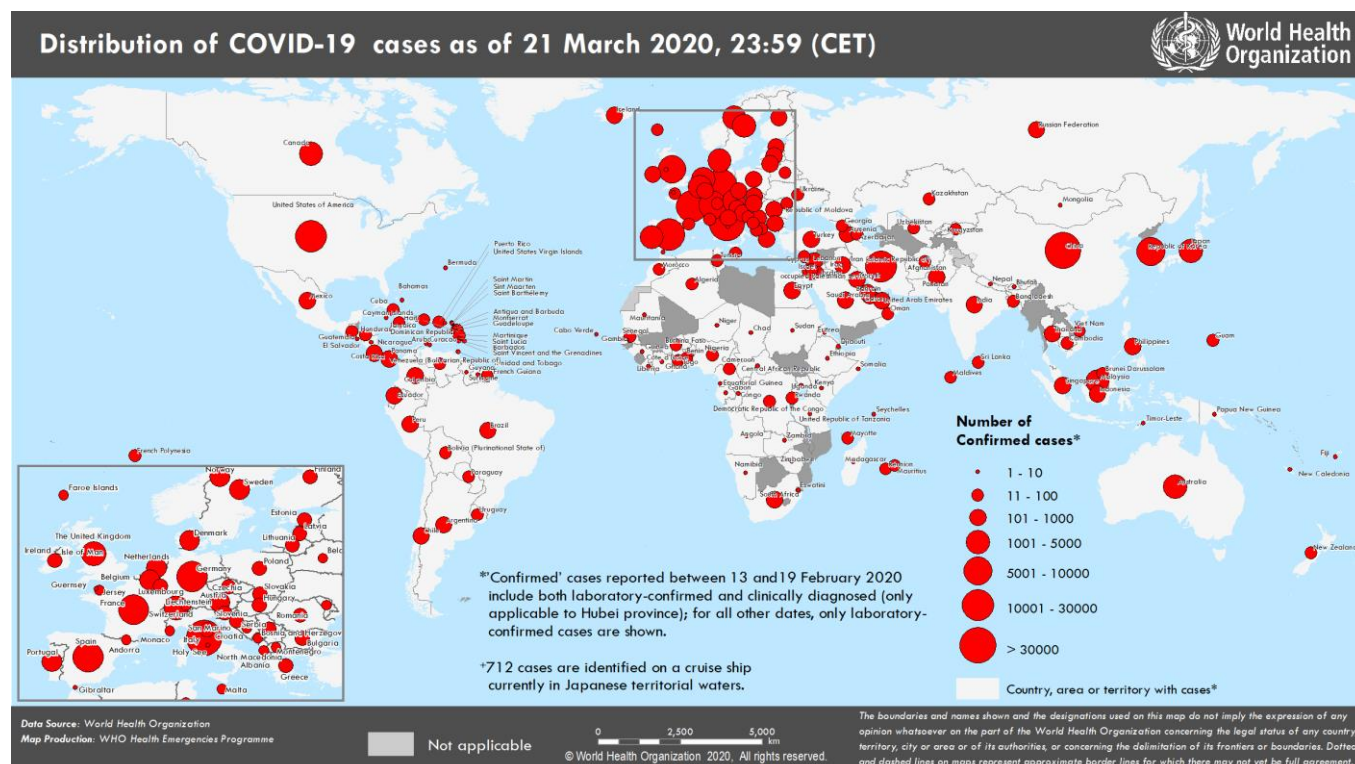
African Region

739 confirmed (167)
20 deaths (8)

WHO RISK ASSESSMENT

Global Level Very High

Figure 1. Countries, territories or areas with reported confirmed cases of COVID-19, 21 March 2020



SURVEILLANCE

Table 1. Countries, territories or areas with reported laboratory-confirmed COVID-19 cases and deaths. Data as of 21 March 2020*

Reporting Country/ Territory/Area [†]	Total confirmed ‡ cases	Total confirmed new cases	Total deaths	Total new deaths	Transmission classification [§]	Days since last reported case
Western Pacific Region						
China	81498	82	3267	6	Local transmission	0
Republic of Korea	8897	98	104	2	Local transmission	0
Malaysia	1183	153	3	0	Local transmission	0
Australia	1081	208	7	0	Local transmission	0
Japan	1046	50	36	1	Local transmission	0
Singapore	432	47	2	2	Local transmission	0
Philippines	307	77	19	1	Local transmission	0
Viet Nam	94	3	0	0	Local transmission	0
Brunei Darussalam	83	5	0	0	Local transmission	0
New Zealand	66	13	0	0	Local transmission	0
Cambodia	53	2	0	0	Local transmission	0
Mongolia	10	4	0	0	Imported cases only	0
Fiji	2	1	0	0	Local transmission	0
Papua New Guinea	1	0	0	0	Imported cases only	1
Territories**						
French Polynesia	15	4	0	0	Imported cases only	0
Guam	15	1	0	0	Local transmission	0
New Caledonia	4	2	0	0	Imported cases only	0
European Region ^						
Italy	53578	6557	4827	795	Local transmission	0
Spain	24926	4946	1326	324	Local transmission	0
Germany	21463	3140	67	22	Local transmission	0
France	14296	1821	562	112	Local transmission	0
Switzerland	6077	1237	56	13	Local transmission	0
The United Kingdom	5018	1035	233	56	Local transmission	0
Netherlands	3631	637	136	30	Local transmission	0
Austria	3024	375	8	2	Local transmission	0
Belgium	2815	558	67	30	Local transmission	0
Norway	1926	184	7	0	Local transmission	0
Sweden	1746	123	20	4	Local transmission	0
Denmark	1326	71	13	4	Local transmission	0
Portugal	1280	260	12	6	Local transmission	0
Czechia	995	91	0	0	Local transmission	0
Turkey	947	277	21	12	Local transmission	0
Israel	883	171	1	0	Local transmission	0
Ireland	785	102	3	0	Local transmission	0
Luxembourg	670	186	8	3	Local transmission	0
Poland	536	111	5	0	Local transmission	0
Greece	530	35	13	5	Local transmission	0
Finland	521	71	1	1	Local transmission	0
Iceland	473	64	1	0	Local transmission	0
Slovenia	383	42	1	0	Local transmission	0
Romania	367	59	0	0	Local transmission	0
Estonia	306	23	0	0	Local transmission	0
Russian Federation	306	53	0	0	Local transmission	0
Croatia	206	80	0	0	Local transmission	0

Slovakia	178	41	0	0	Local transmission	0
Serbia††	173	38	1	0	Local transmission	0
Bulgaria	163	36	3	0	Local transmission	0
Armenia	160	24	0	0	Local transmission	0
San Marino	151	0	20	6	Local transmission	1
Hungary	131	46	4	0	Local transmission	0
Latvia	124	13	0	0	Imported cases only	0
Lithuania	105	36	1	0	Imported cases only	0
Bosnia and Herzegovina	92	48	1	1	Local transmission	0
Andorra	88	13	0	0	Imported cases only	0
North Macedonia	85	15	0	0	Local transmission	0
Cyprus	84	17	0	0	Local transmission	0
Republic of Moldova	80	14	1	0	Local transmission	0
Albania	76	6	2	0	Local transmission	0
Belarus	76	19	0	0	Local transmission	0
Malta	73	9	0	0	Imported cases only	0
Kazakhstan	56	3	0	0	Imported cases only	0
Azerbaijan	53	9	1	0	Imported cases only	0
Georgia	49	6	0	0	Imported cases only	0
Ukraine	47	21	3	0	Local transmission	0
Liechtenstein	36	2	0	0	Imported cases only	0
Uzbekistan	33	0	0	0	Local transmission	1
Monaco	18	6	0	0	Under investigation	0
Kyrgyzstan	14	8	0	0	Imported cases only	0
Montenegro	14	0	0	0	Imported cases only	1
Holy See	1	0	0	0	Under investigation	15
Territories**						
Faroe Islands	92	12	0	0	Local transmission	0
Jersey	12	0	0	0	Imported cases only	1
Gibraltar	10	0	0	0	Under investigation	2
Greenland	2	0	0	0	Under investigation	3
Isle of Man	2	1	0	0	Imported cases only	0
Guernsey	1	0	0	0	Imported cases only	12
South-East Asia Region						
Indonesia	450	81	38	6	Local transmission	0
Thailand	411	89	1	0	Local transmission	0
India	283	88	4	0	Local transmission	0
Sri Lanka	72	13	0	0	Local transmission	0
Bangladesh	24	7	2	1	Local transmission	0
Maldives	13	0	0	0	Local transmission	6
Bhutan	2	0	0	0	Imported cases only	2
Nepal	1	0	0	0	Imported cases only	58
Timor-Leste	1	0	0	0	Imported cases only	1
Eastern Mediterranean Region						
Iran (Islamic Republic of)	20610	966	1556	123	Local transmission	0
Pakistan	495	34	3	1	Local transmission	0
Qatar	470	10	0	0	Local transmission	0
Saudi Arabia	392	118	0	0	Local transmission	0
Bahrain	306	21	1	0	Local transmission	0
Egypt	285	29	8	1	Local transmission	0
Iraq	214	21	17	3	Local transmission	0
Lebanon	206	43	4	0	Local transmission	0

Kuwait	176	17	0	0	Local transmission	0
United Arab Emirates	153	13	2	2	Local transmission	0
Morocco	86	12	3	0	Local transmission	0
Jordan	84	15	0	0	Imported cases only	0
Tunisia	60	6	1	0	Local transmission	0
Oman	52	4	0	0	Local transmission	0
Afghanistan	24	0	0	0	Imported cases only	1
Sudan	2	1	1	0	Imported cases only	0
Djibouti	1	0	0	0	Under investigation	3
Somalia	1	0	0	0	Imported cases only	5
Territories**						
occupied Palestinian territory	52	4	0	0	Local transmission	0
Region of the Americas						
United States of America	15219	0	201	0	Local transmission	1
Canada	1048	202	13	4	Local transmission	0
Brazil	904	283	11	7	Local transmission	0
Ecuador	506	139	7	2	Local transmission	0
Chile	434	0	1	1	Local transmission	1
Peru	318	84	2	0	Local transmission	0
Colombia	196	51	0	0	Local transmission	0
Mexico	164	0	1	0	Imported cases only	1
Argentina	158	30	3	0	Local transmission	0
Panama	137	0	1	0	Local transmission	1
Costa Rica	113	0	2	0	Local transmission	1
Uruguay	94	0	0	0	Imported cases only	1
Dominican Republic	72	0	2	0	Local transmission	1
Venezuela (Bolivarian Republic of)	36	0	0	0	Imported cases only	3
Honduras	24	0	0	0	Imported cases only	1
Bolivia (Plurinational State of)	19	3	0	0	Local transmission	0
Paraguay	18	5	1	1	Local transmission	0
Cuba	16	0	1	0	Imported cases only	1
Jamaica	16	0	1	0	Local transmission	1
Guatemala	12	0	1	0	Imported cases only	1
Trinidad and Tobago	9	0	0	0	Imported cases only	2
Barbados	5	0	0	0	Imported cases only	1
Guyana	5	0	1	0	Local transmission	3
Bahamas	4	0	0	0	Local transmission	1
Haiti	2	0	0	0	Imported cases only	1
Nicaragua	2	1	0	0	Imported cases only	0
Saint Lucia	2	0	0	0	Imported cases only	6
Suriname	2	0	0	0	Imported cases only	1
Antigua and Barbuda	1	0	0	0	Imported cases only	8
El Salvador	1	0	0	0	Imported cases only	2
Saint Vincent and the Grenadines	1	0	0	0	Imported cases only	8
Territories**						
Guadeloupe	51	0	0	0	Imported cases only	1
Martinique	32	0	0	0	Imported cases only	2
Puerto Rico	21	7	1	1	Imported cases only	0
French Guiana	15	0	0	0	Local transmission	2

United States Virgin Islands	6	3	0	0	Imported cases only	0
Aruba	5	0	0	0	Imported cases only	2
Saint Martin	4	0	0	0	Under investigation	3
Cayman Islands	3	0	1	0	Imported cases only	2
Curaçao	3	0	1	1	Imported cases only	4
Saint Barthélemy	3	0	0	0	Under investigation	6
Bermuda	2	0	0	0	Imported cases only	3
Montserrat	1	0	0	0	Imported cases only	3
Sint Maarten	1	0	0	0	Imported cases only	3
African Region						
South Africa	240	35	0	0	Local transmission	0
Algeria	94	0	15	5	Local transmission	1
Burkina Faso	72	32	3	2	Local transmission	0
Senegal	56	18	0	0	Local transmission	0
Cameroon	27	5	0	0	Local transmission	0
Democratic Republic of the Congo	23	9	1	1	Local transmission	0
Nigeria	22	10	0	0	Imported cases only	0
Ghana	19	3	0	0	Local transmission	0
Rwanda	17	6	0	0	Local transmission	0
Togo	15	6	0	0	Imported cases only	0
Mauritius	12	0	0	0	Imported cases only	1
Côte d'Ivoire	9	0	0	0	Imported cases only	3
Ethiopia	9	0	0	0	Imported cases only	2
Kenya	7	0	0	0	Local transmission	3
Seychelles	7	1	0	0	Imported cases only	0
Equatorial Guinea	6	2	0	0	Imported cases only	0
United Republic of Tanzania	6	0	0	0	Imported cases only	2
Congo	4	1	0	0	Imported cases only	0
Cabo Verde	3	2	0	0	Imported cases only	0
Central African Republic	3	2	0	0	Imported cases only	0
Gabon	3	0	1	0	Imported cases only	3
Liberia	3	1	0	0	Local transmission	0
Madagascar	3	3	0	0	Under investigation	0
Namibia	3	0	0	0	Imported cases only	2
Angola	2	2	0	0	Imported cases only	0
Benin	2	0	0	0	Imported cases only	2
Guinea	2	0	0	0	Imported cases only	2
Mauritania	2	0	0	0	Imported cases only	3
Zambia	2	0	0	0	Imported cases only	3
Zimbabwe	2	1	0	0	Imported cases only	0
Chad	1	0	0	0	Imported cases only	2
Eritrea	1	1	0	0	Imported cases only	0
Eswatini	1	0	0	0	Imported cases only	7
Gambia	1	0	0	0	Imported cases only	3
Niger	1	0	0	0	Imported cases only	2
Uganda	1	1	0	0	Imported cases only	0
Territories **						
Réunion	47	19	0	0	Imported cases only	0
Mayotte	11	7	0	0	Imported cases only	0
Subtotal for all	291430	26069	12776	1600		

regions						
International conveyance (Diamond Princess)	712	0	7	0	Local transmission	6
Grand total	292142	26069	12783	1600		

*Numbers include both domestic and repatriated cases

†The designations employed and the presentation of the material in this publication do not imply the expression of any opinion whatsoever on the part of WHO concerning the legal status of any country, territory, city or area or of its authorities, or concerning the delimitation of its frontiers or boundaries. Dotted and dashed lines on maps represent approximate border lines for which there may not yet be full agreement.

‡Case classifications are based on [WHO case definitions](#) for COVID-19.

§Transmission classification is based on WHO analysis of available official data and may be subject to reclassification as additional data become available. Countries/territories/areas experiencing multiple types of transmission are classified in the highest category for which there is evidence; they may be removed from a given category if interruption of transmission can be demonstrated. It should be noted that even within categories, different countries/territories/areas may have differing degrees of transmission as indicated by the differing numbers of cases and other factors. Not all locations within a given country/territory/area are equally affected.

Terms:

- **Community transmission** is evidenced by the inability to relate confirmed cases through chains of transmission for a large number of cases, or by increasing positive tests through sentinel samples (routine systematic testing of respiratory samples from established laboratories).
- **Local transmission** indicates locations where the source of infection is within the reporting location.
- **Imported cases only** indicates locations where all cases have been acquired outside the location of reporting.
- **Under investigation** indicates locations where type of transmission has not been determined for any cases.
- **Interrupted transmission** indicates locations where interruption of transmission has been demonstrated (details to be determined)

** "Territories" include territories, areas, overseas dependencies and other jurisdictions of similar status

^ Data for the European Region is obtained from the European Centre for Disease Control and Prevention (ECDC)

**Including 24 (0 new) cases from Kosovo^[1]

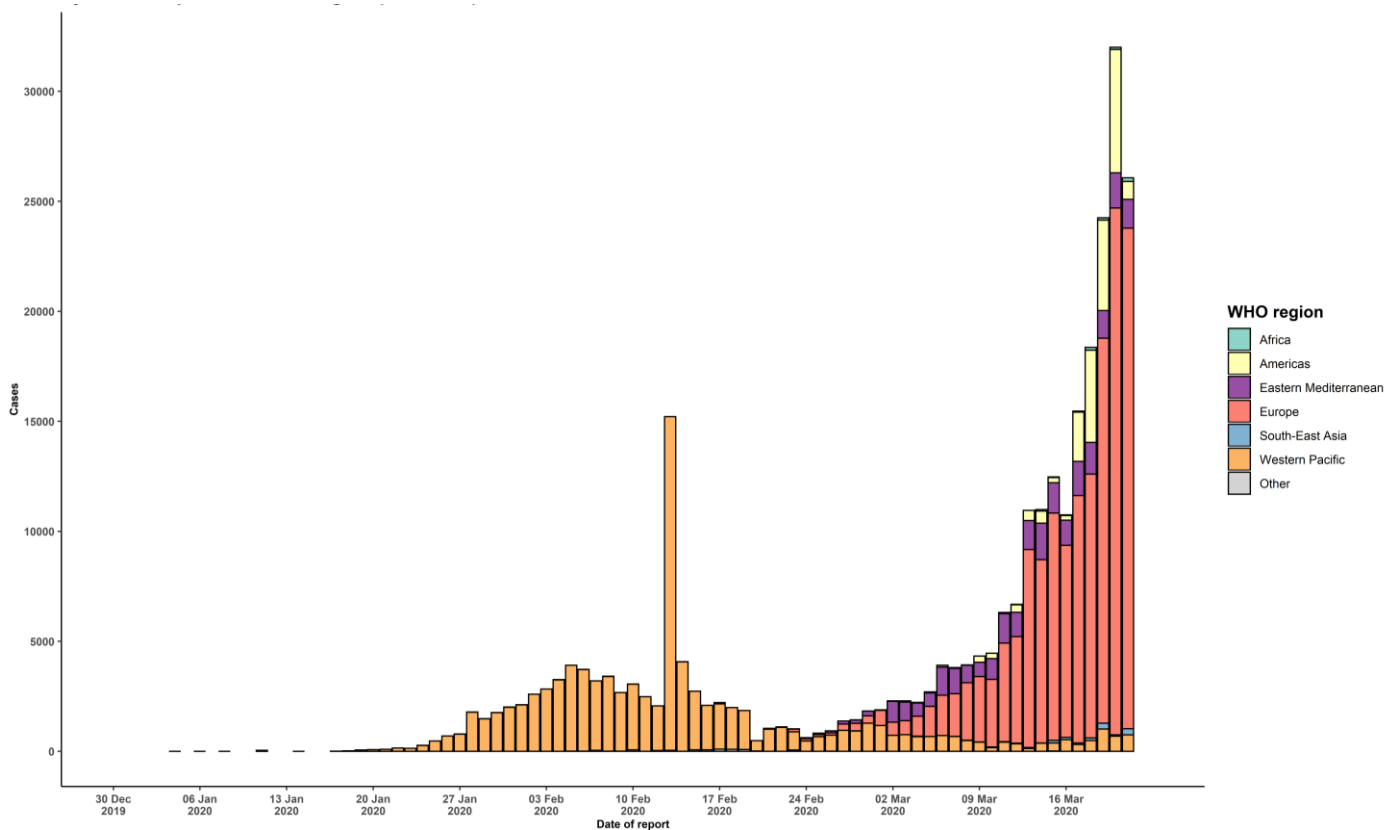
[1] All references to Kosovo should be understood to be in the context of the United Nations Security Council resolution 1244 (1999).

Due to differences in reporting methods, retrospective data consolidation, and reporting delays, the number of new cases may not always reflect the exact difference between yesterday's and today's totals. WHO COVID-19 Situation Reports present official counts of confirmed COVID-19 cases, thus differences between WHO reports and other sources of COVID-19 data using different inclusion criteria and different data cutoff times are to be expected.

New countries/territories/areas are shown in red.

Erratum: Total deaths have been revised for Croatia.

Figure 2. Epidemic curve of confirmed COVID-19, by date of report and WHO region through 21 March 2020



Note that the apparent decrease in number of cases may be due to a reporting bias during the weekend.

STRATEGIC OBJECTIVES

WHO's strategic objectives for this response are to:

- Interrupt human-to-human transmission including reducing secondary infections among close contacts and health care workers, preventing transmission amplification events, and preventing further international spread*;
- Identify, isolate and care for patients early, including providing optimized care for infected patients;
- Identify and reduce transmission from the animal source;
- Address crucial unknowns regarding clinical severity, extent of transmission and infection, treatment options, and accelerate the development of diagnostics, therapeutics and vaccines;
- Communicate critical risk and event information to all communities and counter misinformation;
- Minimize social and economic impact through multisectoral partnerships.

*This can be achieved through a combination of public health measures, such as rapid identification, diagnosis and management of the cases, identification and follow up of the contacts, infection prevention and control in health care settings, implementation of health measures for travelers, awareness-raising in the population and risk communication.

PREPAREDNESS AND RESPONSE

- To view all technical guidance documents regarding COVID-19, please go to [this webpage](#).
- WHO has developed interim guidance for laboratory diagnosis, advice on the use of masks during home care and in health care settings in the context of the novel coronavirus (2019-nCoV) outbreak, clinical management, infection prevention and control in health care settings, home care for patients with suspected novel coronavirus, risk communication and community engagement and Global Surveillance for human infection with novel coronavirus (2019-nCoV).
- WHO is working closely with International Air Transport Association (IATA) and have jointly developed a guidance document to provide advice to cabin crew and airport workers, based on country queries. The guidance can be found on the [IATA webpage](#).
- WHO has been in regular and direct contact with Member States where cases have been reported. WHO is also informing other countries about the situation and providing support as requested.
- WHO is working with its networks of researchers and other experts to coordinate global work on surveillance, epidemiology, mathematical modelling, diagnostics and virology, clinical care and treatment, infection prevention and control, and risk communication. WHO has issued interim guidance for countries, which are updated regularly.
- WHO has prepared a [disease commodity package](#) that includes an essential list of biomedical equipment, medicines and supplies necessary to care for patients with 2019-nCoV.
- WHO has provided recommendations to reduce risk of [transmission from animals to humans](#).
- WHO has published an [updated advice for international traffic in relation to the outbreak of the novel coronavirus 2019-nCoV](#).
- WHO has activated the R&D blueprint to accelerate diagnostics, vaccines, and therapeutics.
- OpenWHO is an interactive, web-based, knowledge-transfer platform offering online courses to improve the response to health emergencies. [COVID-19 courses can be found here](#). Specifically, WHO has developed online courses on the following topics: A general introduction to emerging respiratory viruses, including novel coronaviruses (available in Arabic, Chinese, English, French, Russian, Spanish, Hindi, Persian, Portuguese, Serbian, and Turkish); Clinical Care for Severe Acute Respiratory Infections (available in English, French, Russian, and Vietnamese); Health and safety briefing for respiratory diseases - ePROTECT (available in English, French, Russian, Indonesian, and Portuguese); Infection Prevention and Control for Novel Coronavirus (COVID-19) (available in Chinese, English, French, Russian, Spanish, Indonesian, Italian, Japanese, Portuguese, and Serbian); and COVID-19 Operational Planning Guidelines and COVID-19 Partners Platform to support country preparedness and response (available in English and coming soon in additional languages).
- WHO is providing guidance on early investigations, which are critical in an outbreak of a new virus. The data collected from the protocols can be used to refine recommendations for surveillance and case definitions, to characterize the key epidemiological transmission features of COVID-19, help understand spread, severity, spectrum of disease, impact on the community and to inform operational models for implementation of countermeasures such as case isolation, contact tracing and isolation. Several protocols are available [here](#). One such protocol is for the investigation of early COVID-19 cases and contacts (the "[First Few X \(FFX\) Cases and contact investigation protocol for 2019-novel coronavirus \(2019-nCoV\) infection](#)"). The protocol is designed to gain an early understanding of the key clinical, epidemiological and virological characteristics of the first cases of COVID-19 infection detected in any individual country, to inform the development and updating of public health guidance to manage cases and reduce the potential spread and impact of infection.

RECOMMENDATIONS AND ADVICE FOR THE PUBLIC

If you are not in an area where COVID-19 is spreading or have not travelled from an area where COVID-19 is spreading or have not been in contact with an infected patient, your risk of infection is low. It is understandable that you may feel anxious about the outbreak. Get the facts from reliable sources to help you accurately determine your risks so that you can take reasonable precautions (see [Frequently Asked Questions](#)). Seek guidance from WHO, your healthcare provider, your national public health authority or your employer for accurate information on COVID-19 and whether COVID-19 is circulating where you live. It is important to be informed of the situation and take appropriate measures to protect yourself and your family (see [Protection measures for everyone](#)).

If you are in an area where there are cases of COVID-19 you need to take the risk of infection seriously. Follow the advice of WHO and guidance issued by national and local health authorities. For most people, COVID-19 infection will cause mild illness however, it can make some people very ill and, in some people, it can be fatal. Older people, and those with pre-existing medical conditions (such as cardiovascular disease, chronic respiratory disease or diabetes) are at risk for severe disease (See [Protection measures for persons who are in or have recently visited \(past 14 days\) areas where COVID-19 is spreading](#)).

CASE DEFINITIONS

WHO periodically updates the [Global Surveillance for human infection with coronavirus disease \(COVID-19\)](#) document which includes case definitions.

For easy reference, case definitions are included below.

Suspect case

A. A patient with acute respiratory illness (fever and at least one sign/symptom of respiratory disease, e.g., cough, shortness of breath), AND a history of travel to or residence in a location reporting community transmission of COVID-19 disease during the 14 days prior to symptom onset.

OR

B. A patient with any acute respiratory illness AND having been in contact with a confirmed or probable COVID-19 case (see definition of contact) in the last 14 days prior to symptom onset;

OR

C. A patient with severe acute respiratory illness (fever and at least one sign/symptom of respiratory disease, e.g., cough, shortness of breath; AND requiring hospitalization) AND in the absence of an alternative diagnosis that fully explains the clinical presentation.

Probable case

A. A suspect case for whom testing for the COVID-19 virus is inconclusive.

a. Inconclusive being the result of the test reported by the laboratory.

OR

B. A suspect case for whom testing could not be performed for any reason.

Confirmed case

A person with laboratory confirmation of COVID-19 infection, irrespective of clinical signs and symptoms.

- Technical guidance for laboratory testing can be found [here](#).

Definition of contact

A contact is a person who experienced any one of the following exposures during the 2 days before and the 14 days

after the onset of symptoms of a probable or confirmed case:

1. Face-to-face contact with a probable or confirmed case within 1 meter and for more than 15 minutes;
2. Direct physical contact with a probable or confirmed case;
3. Direct care for a patient with probable or confirmed COVID-19 disease without using proper personal protective equipment¹; OR
4. Other situations as indicated by local risk assessments.

Note: for confirmed asymptomatic cases, the period of contact is measured as the 2 days before through the 14 days *after the date on which the sample was taken* which led to confirmation.

¹ World Health Organization. Infection prevention and control during health care when COVID-19 is suspected
[https://www.who.int/publications-detail/infection-prevention-and-control-during-health-care-when-novel-coronavirus-\(ncov\)-infection-is-suspected-20200125](https://www.who.int/publications-detail/infection-prevention-and-control-during-health-care-when-novel-coronavirus-(ncov)-infection-is-suspected-20200125)