

# Coronavirus disease (COVID-19)

## Situation Report – 105

Data as received by WHO from national authorities by 10:00 CEST, 4 May 2020

This report has been reformatted to improve accessibility for persons with visual impairment.

### Highlights

---

WHO has delivered additional medicines to the Islamic Republic of Iran as part of the Solidarity Trial, a global effort to find an effective treatment for COVID-19. Find more on this [here](#).

---

Polio disease surveillance teams are reaching into the most far-flung places of the globe to address the COVID-19 pandemic. An article on polio teams working in Somalia is available [here](#).

---

An update of WHO partner coordination is today's **'Subject in Focus'** below.

---

### Situation in numbers (by WHO Region)

Total (new cases in last 24 hours)

---

Globally	3 435 894 cases (86 108)	239 604 deaths (976)
Africa	30 536 cases (1098)	1085 deaths (21)
Americas	1 433 756 cases (49 115)	77 827 deaths (-582)
Eastern Mediterranean	206 299 cases (5690)	7971 deaths (100)
Europe	1 544 145 cases (25 250)	143 987 deaths (1320)
South-East Asia	67 673 cases (3626)	2463 deaths (88)
Western Pacific	152 773 cases (1329)	6258 deaths (29)

---

## Subject in Focus: Update on Partner Coordination

Many partners have been working closely with WHO from the beginning of the response, both at WHO headquarters and in the field. UNICEF, IFRC, US CDC, and OCHA are major partners embedded in the global COVID-19 incident management team in Geneva, and are supporting all pillars of response.

127 Emergency Medical Teams (EMTs) are registered in the Global Classification (<https://extranet.who.int/emt/>) of which 29 are already classified and 98 under the classification process. To date, a total of 19 EMTs have been deployed internationally and another 36 EMTs are supporting national operations in the response to COVID-19, providing support to 15 countries.

As of 27 April 2020, EMT operations have significantly increased in Africa - the region with the most international operations, followed by the European Region. In particular, large EMTs have been deployed to Italy, Cambodia, Mongolia and Kyrgyzstan. 58 training sessions have been conducted with more than 3100 front line responders trained.

Global Outbreak Alert and Response Network (GOARN) partners are: supporting risk assessment and strategic and operational planning; and providing technical advice across all health operation pillars, particularly clinical management, IPC, laboratory and risk communication and community engagement (RCCE).

As of 4 May, 2020, 400 offers of support have been received from GOARN partners. This includes a large express of interest from "One Health" partners, particularly from the South-East Asia and the Western Pacific Regions. Current support includes missions to Ethiopia, São Tomé and Príncipe, Tajikistan, and Timor-Leste.

Esri, the global leader in geographic information system (GIS) software, is providing a free and comprehensive ArcGIS package to all GOARN partners and ministries of health to support the COVID-19 response. WHO and GOARN partners are working to facilitate online ArcGIS training to build and improve the operational capacity of partners. WHO is assessing GIS training needs and capacity among GOARN partners.

Asia and Africa RCCE regional coordination groups are triangulating operational social science data, including community feedback data, sentiments and perception analysis and online data mining. This will better inform decision-making and community engagement strategies. The goal is to progressively connect partners collecting data into a more comprehensive and coordinated reporting and monitoring system available to all. At regional and global level RCCE teams are exploring the development of interagency dashboards for visualizing data to better inform operational response planning.

IFRC, UNICEF and WHO, in close coordination with GOARN and support from the Bill and Melinda Gates Foundation, are working towards the establishment of a RCCE Global Collective Service to assist the public health and humanitarian response. This will build on the existing coordination efforts towards providing global, regional and country support across to the health and humanitarian architecture.

In RCCE, the focus area this week includes:

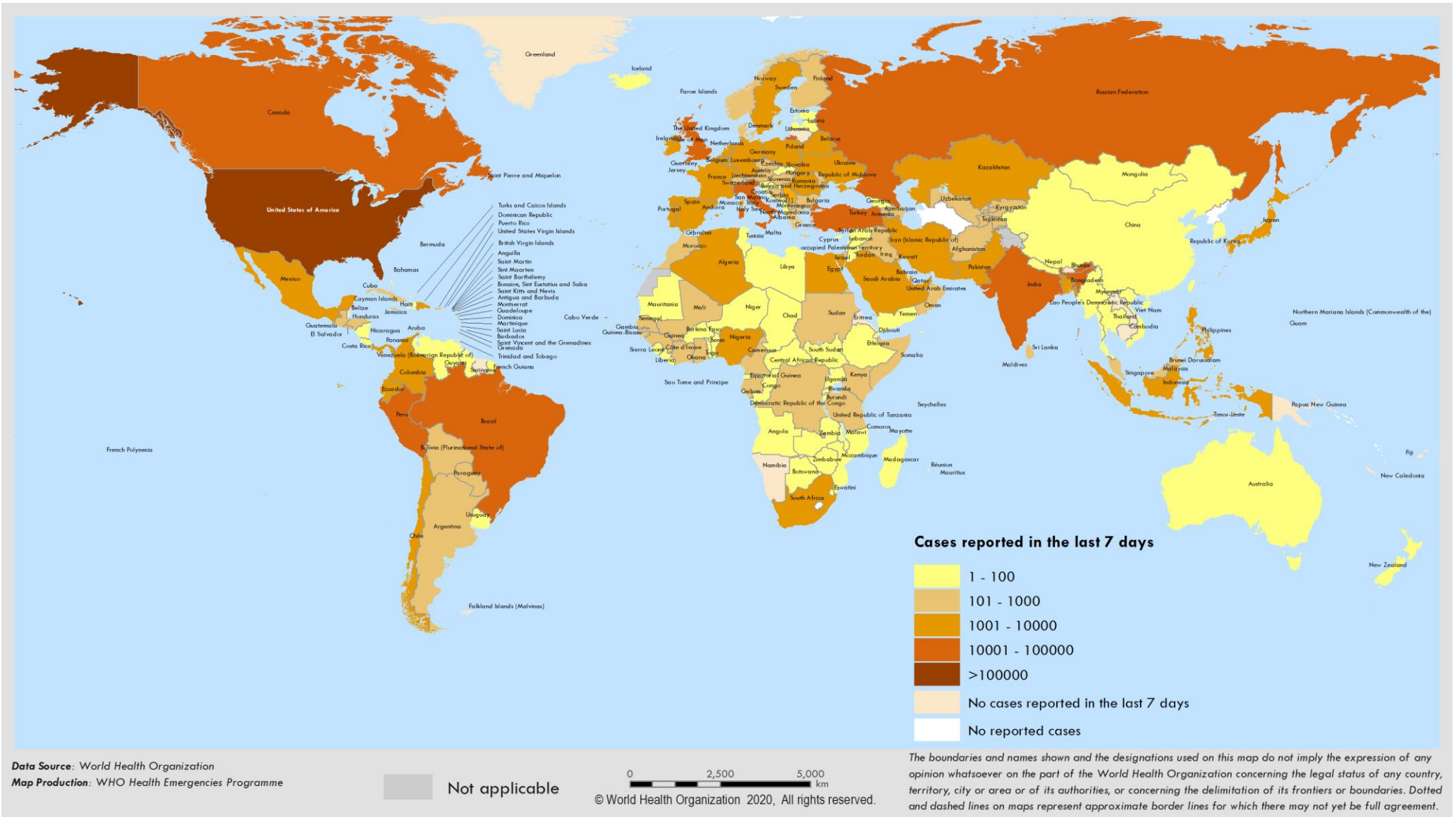
- Post lockdown engagement of communities including on reopening of schools, handwashing campaign and engagement with faith based organizations on religious festivals including Ramadan.

- Compilation of tips on community of engagement in low resource settings developed and disseminated among partners, offering good practice examples and innovative outreach solutions.
- Community engagement data is being triangulated in the group to better utilize and inform IMST decision making:
  - Exploring regional interagency dashboards for CE data to better inform operational response planning.
  - Rumour monitoring ongoing among partners like Internews. The goal is to better connect partners collecting data into a more comprehensive reporting and monitoring system available to all.
- Proactive WHO and UNICEF engagement with faith-based organizations is being undertaken to ensure that religious events and customs are aligned with the infection prevention and control principles of this outbreak response.

On the occasion of World Hand Hygiene Day on 5 May, UNICEF is mobilizing global RCCE partners to scale up handwashing outreach for COVID-19 prevention and Operationalization of the [interim recommendations on obligatory hand hygiene against transmission of COVID-19](#).

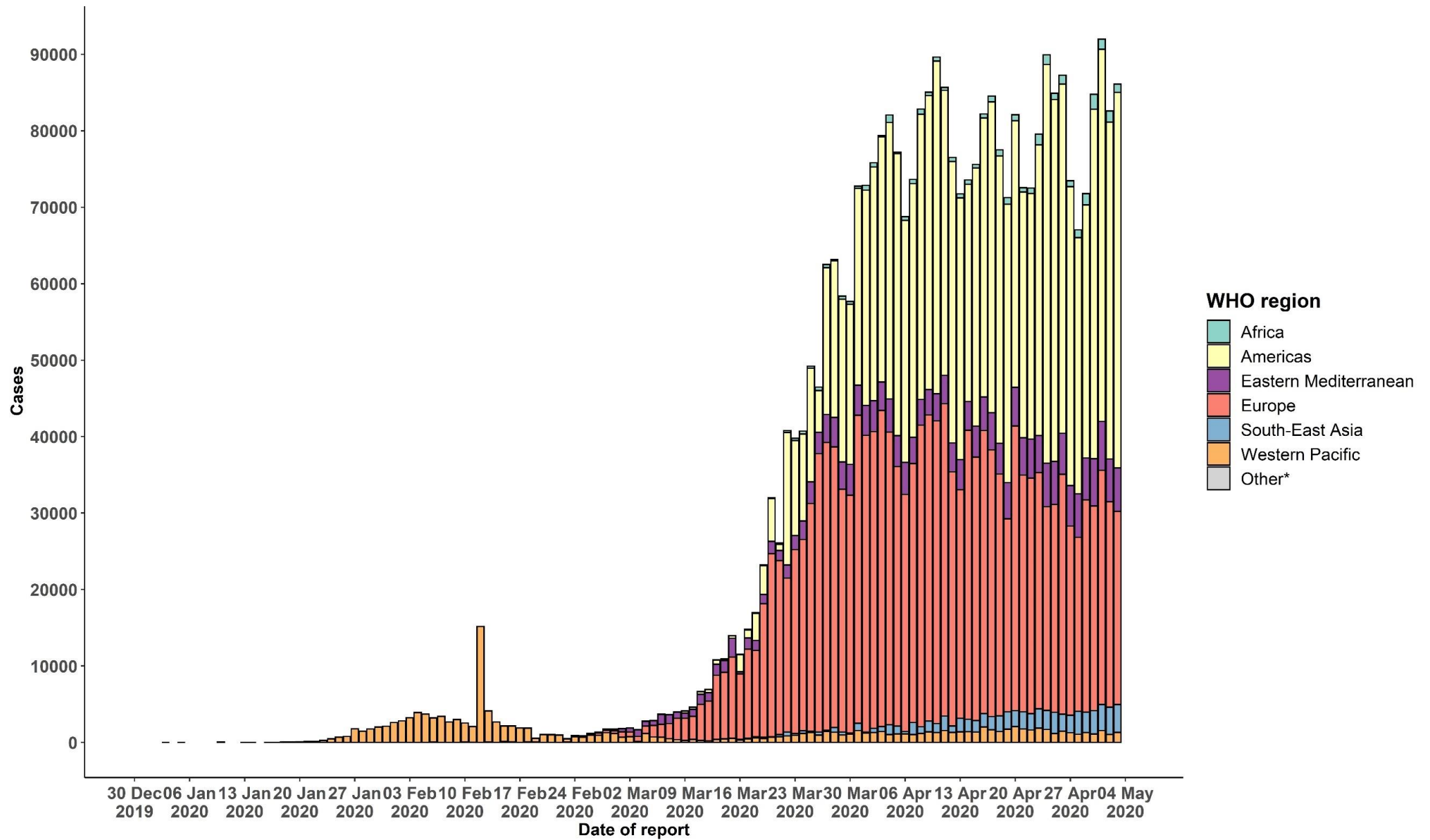
# Surveillance

Figure 1. Number of confirmed COVID-19 cases reported in the last seven days by country, territory or area, 28 April to 4 May\*\*



\*\*See Annex 1 for data, table and figure notes.

Figure 2. Number of confirmed COVID-19 cases, by date of report and WHO region, 30 December 2019 through 4 May 2020\*\*



\*\*See [Annex 1](#) for data, table and figure notes.

**Table 1. Countries, territories or areas with reported laboratory-confirmed COVID-19 cases and deaths, by WHO region. Data as of 10 AM CEST, 4 May 2020\*\***

Reporting Country/ Territory/Area	Total confirmed cases	Total confirmed new cases	Total deaths	Total new deaths	Transmission classification <sup>i</sup>	Days since last reported case
Africa						
South Africa	6783	447	131	8	Community transmission	0
Algeria	4474	179	463	4	Community transmission	0
Nigeria	2388	0	85	0	Community transmission	1
Ghana	2169	0	18	0	Clusters of cases	1
Cameroon	2077	0	64	0	Clusters of cases	1
Guinea	1650	64	7	0	Community transmission	0
Côte d'Ivoire	1398	36	17	2	Clusters of cases	0
Senegal	1273	158	9	0	Clusters of cases	0
Niger	750	14	36	1	Clusters of cases	0
Democratic Republic of the Congo	682	8	34	1	Clusters of cases	0
Burkina Faso	662	10	45	1	Community transmission	0
Mali	563	19	27	1	Clusters of cases	0
United Republic of Tanzania	480	0	18	0	Clusters of cases	4
Kenya	466	31	24	2	Clusters of cases	0
Gabon	335	0	5	0	Clusters of cases	1
Mauritius	332	0	10	0	Community transmission	7
Equatorial Guinea	315	0	2	0	Clusters of cases	5
Guinea-Bissau	292	32	2	1	Sporadic cases	0
Rwanda	259	4	0	0	Clusters of cases	0
Congo	229	0	10	0	Clusters of cases	2
Cabo Verde	165	13	2	0	Sporadic cases	0

Reporting Country/ Territory/Area	Total confirmed cases	Total confirmed new cases	Total deaths	Total new deaths	Transmission classification <sup>1</sup>	Days since last reported case
Liberia	158	4	18	0	Clusters of cases	0
Sierra Leone	157	2	8	0	Clusters of cases	0
Madagascar	151	2	0	0	Clusters of cases	0
Ethiopia	135	2	3	0	Clusters of cases	0
Togo	124	1	9	0	Clusters of cases	0
Zambia	124	5	3	0	Sporadic cases	0
Chad	117	0	10	0	Sporadic cases	1
Eswatini	112	4	1	0	Sporadic cases	0
Benin	90	0	2	0	Sporadic cases	2
Uganda	88	3	0	0	Sporadic cases	0
Mozambique	80	1	0	0	Sporadic cases	0
Central African Republic	72	0	0	0	Sporadic cases	1
South Sudan	46	1	0	0	Sporadic cases	0
Eritrea	39	0	0	0	Sporadic cases	15
Malawi	39	1	3	0	Sporadic cases	0
Angola	35	0	2	0	Sporadic cases	1
Zimbabwe	34	0	4	0	Sporadic cases	2
Botswana	23	0	1	0	Sporadic cases	5
São Tomé and Príncipe	23	0	3	0	Sporadic cases	1
Burundi	19	0	1	0	Sporadic cases	1
Gambia	17	0	1	0	Sporadic cases	1
Namibia	16	0	0	0	Sporadic cases	28
Seychelles	11	0	0	0	Sporadic cases	27

Reporting Country/ Territory/Area	Total confirmed cases	Total confirmed new cases	Total deaths	Total new deaths	Transmission classification <sup>i</sup>	Days since last reported case
Mauritania	8	0	1	0	Sporadic cases	3
Comoros	3	0	0	0	Pending	1
<b>Territories<sup>i</sup></b>						
Mayotte	650	54	6	0	Clusters of cases	0
Réunion	423	3	0	0	Clusters of cases	0
<b>Americas</b>						
United States of America	1125719	31839	60710	-1696	Community transmission	0
Brazil	96559	4970	6750	421	Community transmission	0
Canada	59365	3793	3681	235	Community transmission	0
Peru	42534	2075	1200	76	Community transmission	0
Ecuador	29538	2074	1564	193	Community transmission	0
Mexico	22088	1349	2061	89	Community transmission	0
Chile	19663	1228	260	13	Community transmission	0
Dominican Republic	7954	376	333	7	Community transmission	0
Colombia	7285	279	324	10	Community transmission	0
Panama	7090	370	197	5	Community transmission	0
Argentina	4681	149	241	12	Community transmission	0
Cuba	1649	38	67	1	Clusters of cases	0
Bolivia (Plurinational State of)	1470	241	71	5	Clusters of cases	0
Honduras	1010	111	76	1	Clusters of cases	0
Costa Rica	733	8	6	0	Clusters of cases	0
Guatemala	688	44	19	1	Clusters of cases	0
Uruguay	652	4	17	0	Clusters of cases	0
El Salvador	490	44	11	1	Clusters of cases	0



Reporting Country/ Territory/Area	Total confirmed cases	Total confirmed new cases	Total deaths	Total new deaths	Transmission classification <sup>i</sup>	Days since last reported case
Jamaica	463	31	8	0	Clusters of cases	0
Paraguay	370	37	10	0	Community transmission	0
Venezuela (Bolivarian Republic of)	345	0	10	0	Clusters of cases	1
Trinidad and Tobago	116	0	8	0	Sporadic cases	6
Haiti	85	0	8	0	Clusters of cases	1
Bahamas	82	0	11	0	Clusters of cases	1
Guyana	82	0	9	0	Clusters of cases	2
Barbados	81	0	7	0	Clusters of cases	2
Antigua and Barbuda	25	1	3	0	Clusters of cases	0
Grenada	21	1	0	0	Clusters of cases	0
Belize	18	0	2	0	Sporadic cases	19
Saint Lucia	17	0	0	0	Sporadic cases	4
Dominica	16	0	0	0	Clusters of cases	23
Saint Vincent and the Grenadines	16	0	0	0	Sporadic cases	4
Saint Kitts and Nevis	15	0	0	0	Sporadic cases	13
Nicaragua	14	0	4	0	Pending	3
Suriname	10	0	1	0	Sporadic cases	30
<b>Territories<sup>ii</sup></b>						
Puerto Rico	1808	51	97	43	Clusters of cases	0
Martinique	181	1	14	0	Clusters of cases	0
Guadeloupe	152	0	12	0	Clusters of cases	3
French Guiana	128	0	1	0	Clusters of cases	2

Reporting Country/ Territory/Area	Total confirmed cases	Total confirmed new cases	Total deaths	Total new deaths	Transmission classification <sup>1</sup>	Days since last reported case
Bermuda	115	1	7	1	Clusters of cases	0
Aruba	100	0	2	0	Clusters of cases	11
Sint Maarten	76	0	13	0	Clusters of cases	3
Cayman Islands	74	0	1	0	Clusters of cases	1
United States Virgin Islands	66	0	4	0	Clusters of cases	3
Saint Martin	38	0	3	0	Sporadic cases	11
Curaçao	16	0	1	0	Sporadic cases	6
Falkland Islands (Malvinas)	13	0	0	0	Clusters of cases	8
Turks and Caicos Islands	12	0	1	0	Sporadic cases	6
Montserrat	11	0	1	0	Sporadic cases	20
Bonaire, Sint Eustatius and Saba	6	0	0	0	Sporadic cases	6
British Virgin Islands	6	0	1	0	Sporadic cases	8
Saint Barthélemy	6	0	0	0	Sporadic cases	34
Anguilla	3	0	0	0	Sporadic cases	30
Saint Pierre and Miquelon	1	0	0	0	Sporadic cases	26
<b>Eastern Mediterranean</b>						
Iran (Islamic Republic of)	97424	976	6203	47	Community transmission	0
Saudi Arabia	27011	1552	184	8	Clusters of cases	0
Pakistan	20084	981	457	17	Clusters of cases	0
Qatar	15551	679	12	0	Community transmission	0
United Arab Emirates	14163	564	126	7	Pending	0
Egypt	6465	272	429	14	Clusters of cases	0
Kuwait	4983	364	38	5	Clusters of cases	0

Reporting Country/ Territory/Area	Total confirmed cases	Total confirmed new cases	Total deaths	Total new deaths	Transmission classification <sup>i</sup>	Days since last reported case
Morocco	4903	174	174	1	Clusters of cases	0
Bahrain	3356	72	8	0	Clusters of cases	0
Oman	2568	0	12	0	Clusters of cases	1
Afghanistan	2469	0	72	0	Clusters of cases	2
Iraq	2219	0	95	0	Clusters of cases	1
Djibouti	1112	0	2	0	Clusters of cases	1
Tunisia	1009	0	42	0	Community transmission	1
Lebanon	737	4	25	0	Clusters of cases	0
Somalia	722	51	32	1	Sporadic cases	0
Sudan	592	0	41	0	Sporadic cases	1
Jordan	461	1	9	0	Clusters of cases	0
Libya	63	0	3	0	Clusters of cases	2
Syrian Arab Republic	44	0	3	0	Community transmission	2
Yemen	10	0	2	0	Pending	1
<b>Territories<sup>i</sup></b>						
occupied Palestinian territory	353	0	2	0	Clusters of cases	2
<b>Europe</b>						
Spain	217466	884	25264	164	Community transmission	0
Italy	210717	1389	28884	174	Community transmission	0
The United Kingdom	186603	4339	28446	315	Community transmission	0
Germany	163175	679	6692	43	Community transmission	0
Russian Federation	145268	10581	1356	76	Clusters of cases	0
France	129708	250	24859	135	Community transmission	0
Turkey	126045	1670	3397	61	Community transmission	0

Reporting Country/ Territory/Area	Total confirmed cases	Total confirmed new cases	Total deaths	Total new deaths	Transmission classification <sup>1</sup>	Days since last reported case
Belgium	49906	389	7844	79	Community transmission	0
Netherlands	40571	335	5056	69	Community transmission	0
Switzerland	29822	88	1472	6	Community transmission	0
Portugal	25282	92	1043	20	Community transmission	0
Sweden	22317	235	2679	10	Community transmission	0
Ireland	21506	330	1303	38	Community transmission	0
Belarus	17489	1661	103	6	Clusters of cases	0
Israel	16152	0	227	0	Pending	2
Austria	15597	39	598	2	Community transmission	0
Poland	13693	318	678	14	Community transmission	0
Romania	13163	431	780	9	Community transmission	0
Ukraine	12331	418	303	15	Community transmission	0
Denmark	9523	116	484	9	Pending	0
Serbia	9464	102	193	4	Pending	0
Norway	7809	50	208	4	Pending	0
Czechia	7781	26	248	3	Community transmission	0
Finland	5254	75	230	10	Pending	0
Republic of Moldova	4121	69	128	4	Pending	0
Kazakhstan	3988	111	27	1	Pending	0
Luxembourg	3824	12	96	4	Pending	0
Hungary	3035	37	351	11	Clusters of cases	0
Greece	2626	6	144	1	Community transmission	0
Armenia	2507	121	39	4	Clusters of cases	0
Uzbekistan	2160	33	10	1	Clusters of cases	0

Reporting Country/ Territory/Area	Total confirmed cases	Total confirmed new cases	Total deaths	Total new deaths	Transmission classification <sup>1</sup>	Days since last reported case
Croatia	2096	8	79	2	Community transmission	0
Azerbaijan	1932	38	25	0	Clusters of cases	0
Bosnia and Herzegovina	1857	100	76	8	Community transmission	0
Iceland	1799	1	10	0	Community transmission	0
Estonia	1700	1	55	2	Pending	0
Bulgaria	1618	24	73	1	Clusters of cases	0
North Macedonia	1511	5	84	2	Clusters of cases	0
Slovenia	1439	0	96	2	Community transmission	1
Lithuania	1410	4	46	0	Community transmission	0
Slovakia	1408	1	24	0	Clusters of cases	0
Latvia	879	8	16	0	Community transmission	0
Cyprus	872	8	20	0	Clusters of cases	0
Kyrgyzstan	830	35	10	0	Clusters of cases	0
Albania	795	0	31	0	Clusters of cases	1
Andorra	749	2	45	1	Community transmission	0
Georgia	593	4	9	1	Community transmission	0
San Marino	582	2	41	0	Community transmission	0
Malta	477	10	4	0	Pending	0
Montenegro	322	0	8	1	Clusters of cases	4
Tajikistan	128	52	4	2	Pending	0
Monaco	95	27	1	0	Sporadic cases	0
Liechtenstein	83	0	1	0	Pending	8
Holy See	11	0	0	0	Sporadic cases	3

Reporting Country/ Territory/Area	Total confirmed cases	Total confirmed new cases	Total deaths	Total new deaths	Transmission classification <sup>i</sup>	Days since last reported case
<b>Territories<sup>ii</sup></b>						
Kosovo <sup>[1]</sup>	851	28	27	5	Community transmission	0
Isle of Man	320	5	23	0	Pending	0
Jersey	291	1	24	1	Pending	0
Guernsey	252	0	13	0	Community transmission	1
Faroe Islands	187	0	0	0	Pending	10
Gibraltar	144	0	0	0	Clusters of cases	2
Greenland	11	0	0	0	Pending	28
<b>South-East Asia</b>						
India	42533	2553	1373	72	Clusters of cases	0
Indonesia	11192	349	845	14	Community transmission	0
Bangladesh	9455	665	177	2	Clusters of cases	0
Thailand	2987	18	54	0	Clusters of cases	0
Sri Lanka	718	13	7	0	Clusters of cases	0
Maldives	527	8	1	0	Clusters of cases	0
Myanmar	155	4	6	0	Clusters of cases	0
Nepal	75	16	0	0	Sporadic cases	0
Timor-Leste	24	0	0	0	Clusters of cases	10
Bhutan	7	0	0	0	Sporadic cases	11
<b>Western Pacific</b>						
China	84400	7	4643	0	Clusters of cases	0
Singapore	18205	657	18	1	Clusters of cases	0
Japan	15057	218	510	18	Clusters of cases	0

Reporting Country/ Territory/Area	Total confirmed cases	Total confirmed new cases	Total deaths	Total new deaths	Transmission classification <sup>i</sup>	Days since last reported case
Republic of Korea	10801	8	252	2	Clusters of cases	0
Philippines	9223	295	607	4	Clusters of cases	0
Australia	6801	18	95	2	Clusters of cases	0
Malaysia	6298	122	105	2	Clusters of cases	0
New Zealand	1137	1	20	0	Clusters of cases	0
Viet Nam	271	1	0	0	Clusters of cases	0
Brunei Darussalam	138	0	1	0	Sporadic cases	14
Cambodia	122	0	0	0	Sporadic cases	22
Mongolia	39	0	0	0	Sporadic cases	1
Lao People's Democratic Republic	19	0	0	0	Sporadic cases	21
Fiji	18	0	0	0	Sporadic cases	13
Papua New Guinea	8	0	0	0	Sporadic cases	11
<b>Territories<sup>ii</sup></b>						
Guam	146	2	5	0	Clusters of cases	0
French Polynesia	58	0	0	0	Sporadic cases	6
New Caledonia	18	0	0	0	Sporadic cases	31
Northern Mariana Islands (Commonwealth of the)	14	0	2	0	Pending	16
<b>Subtotal for all regions</b>	<b>3 435 182</b>	<b>86 108</b>	<b>239 591</b>	<b>976</b>		
Other*	712	0	13	0	-	49
<b>Grand total</b>	<b>3 435 894</b>	<b>86 108</b>	<b>239 604</b>	<b>976</b>		

\*\*See [Annex 1](#) for data, table and figure notes.

---

## Technical guidance and other resources

- To view all technical guidance documents regarding COVID-19, please go to [this webpage](#).
- Updates from WHO regional offices
  - [WHO AFRO](#)
  - [WHO EMRO](#)
  - [WHO EURO](#)
  - [WHO PAHO](#)
  - [WHO SEARO](#)
  - [WHO WPRO](#)
- [Research and Development](#)
- [Online courses on COVID-19](#) and in [additional national languages](#)
- [The Strategic Preparedness and Response Plan \(SPRP\)](#) outlining the support the international community can provide to all countries to prepare and respond to the virus.
- [WHO Health Emergency dashboard](#)
- [Weekly COVID-19 Operations Updates](#)

---

## Recommendations and advice for the public

- [Protect yourself](#).
- [Questions and answers](#)
- [Travel advice](#)
- [EPI-WIN](#): tailored information for individuals, organizations and communities

---

## Case definitions

WHO periodically updates the [Global Surveillance for human infection with coronavirus disease \(COVID-19\) document](#) which includes surveillance definitions.

### Definition of COVID-19 death

COVID-19 death is defined for surveillance purposes as a death resulting from a clinically compatible illness in a probable or confirmed COVID-19 case, unless there is a clear alternative cause of death that cannot be related to COVID disease (e.g. trauma). There should be no period of complete recovery between the illness and death.



---

## Annex 1: Data, table and figure notes

Caution must be taken when interpreting all data presented. Differences are to be expected between information products published by WHO, national public health authorities, and other sources using different inclusion criteria and different data cut-off times. While steps are taken to ensure accuracy and reliability, all data are subject to continuous verification and change. Case detection, definitions, testing strategies, reporting practice, and lag times differ between countries/territories/areas. These factors, amongst others, influence the counts presented with variable underestimation of true case and death counts, and variable delays to reflecting these data at global level.

The designations employed, and the presentation of these materials do not imply the expression of any opinion whatsoever on the part of WHO concerning the legal status of any country, territory or area or of its authorities, or concerning the delimitation of its frontiers or boundaries. Dotted and dashed lines on maps represent approximate border lines for which there may not yet be full agreement. Countries, territories and areas are arranged under the administering WHO region.

<sup>[1]</sup> All references to Kosovo should be understood to be in the context of the United Nations Security Council resolution 1244 (1999).

In the map, number of cases of Serbia and Kosovo (UNSCR 1244, 1999) have been aggregated for visualization purposes.

Counts reflect laboratory-confirmed cases and deaths, based on [WHO case definitions](#) unless stated otherwise (see *Country, territory, or area-specific updates and errata*), and include both domestic and repatriated cases.

Other\*: includes cases and deaths reported under the international conveyance (Diamond Princess).

Due to the recent trend of countries conducting data reconciliation exercises which remove large numbers of cases or deaths from their total counts, WHO will now display such data as *negative* numbers in the “new cases” / “new deaths” columns as appropriate. This will aid readers in identifying when such reconciliation exercises have taken place. When additional details become available in future which allow the subtractions to be apportioned to previous days, numbers will be updated accordingly. Prior situation reports will not be retrospectively updated; the most up-to-date data can always be found at [covid19.who.int](https://covid19.who.int)

### Additional table notes

<sup>i</sup> Transmission classification is based on a process of country/territory/area self-reporting. Classifications are reviewed on a weekly basis, may be revised as new information becomes available, and are based on the highest category reported. Differing degrees of transmission may be present within countries/territories/areas. Categories:

- No cases: with no confirmed cases (not shown in table).
- Sporadic cases: with one or more cases, imported or locally detected.
- Clusters of cases: experiencing cases, clustered in time, geographic location and/or by common exposures.
- Community transmission: experiencing larger outbreaks of local transmission defined through an assessment of factors including, but not limited to: large numbers of cases not linkable to transmission chains; large numbers of cases from sentinel lab surveillance; and/or multiple unrelated clusters in several areas of the country/territory/area.
- Pending: transmission classification not been reported to WHO.

<sup>ii</sup> “Territories” include territories, areas, overseas dependencies and other jurisdictions of similar status.

**Country, territory, or area-specific updates and errata**

United States of America data retro-adjusted by national authorities.