

Coronavirus disease (COVID-19)

Situation Report – 127

Data as received by WHO from national authorities by 10:00 CEST, 26 May 2020

Highlights

WHO Director-General Dr Tedros, in his regular [media briefing](#), mentioned that “over 400 hospitals in 35 countries are actively recruiting patients and nearly 3500 patients have been enrolled from 17 countries” as part of the Solidarity Trial which was established to evaluate the safety and efficacy of four drugs and drug combinations against COVID-19.

The WHO Regional Office for Europe along with the European Centre for Disease Prevention and Control (ECDC), said that they will continue to [repurpose their influenza surveillance systems to also detect the COVID-19 virus](#).

Facing an unprecedented global demand for essential COVID-19 medical supplies, WHO is working with partners to help secure supplies to assist the most vulnerable countries. This is explored in today’s [‘Subject in Focus’](#), below.

Situation in numbers (by WHO Region)

Total (new cases in last 24 hours)

Globally	5 404 0512 cases (99 780)	343 514 deaths (1 486)
Africa	83 044 cases (3 042)	2 214 deaths (94)
Americas	2 454 452 cases (59 157)	143 739 deaths (2 267)
Eastern Mediterranean	438 900 cases (11 068)	11 293 deaths (129)
Europe	2 041 705 cases (16 569)	173 213 deaths (-1 215**)
South-East Asia	210 273 cases (9 066)	6 140 deaths (188)
Western Pacific	175 397 cases (878)	6 902 deaths (23)

** Details for this negative number can be found in [Annex 1](#) under ‘Country, territory, or area-specific updates and errata’.

Subject in Focus: COVID-19 Supply Chain Systems

Progress Updates

Unprecedented global demand for personal protective equipment (PPE), diagnostic tests and biomedical equipment required for the COVID-19 response has created acute market shortages of these essential supplies. WHO's Operations Support and Logistics (OSL) team is working with WFP, UNICEF and other UN agencies, donor partners and NGOs to approach the market with the collective voice of the UN to negotiate with manufacturers to help secure life-saving supplies to assist the most vulnerable countries.

In recent weeks, OSL with the support of purchasing consortia has procured large volumes of PPE, testing supplies and clinical care equipment for allocation and delivery to low- and middle-income countries facing the greatest difficulties accessing these critical supplies.

The diagnostics consortium has procured 4 million manual polymerase chain reaction (PCR) tests and 3 million sample collection kits for allocation to 135 countries.

The biomedical consortium has procured and allocated to 41 countries 4,000 oxygen concentrators, along with additional quantities of accessories and consumables (including oxygen cannulas, venturi masks, filters and other items). First deliveries are expected in the coming two weeks. WHO is also preparing to purchase additional biomedical equipment for allocation to countries in June, including concentrators, ventilators, pulse oximeters and patient monitors.

With support from the PPE consortium, WHO is preparing to ship more than 70 million medical masks, 3 million gowns, 28 million gloves, 15 million N95 Respirators, 1 million goggles and 9 million face shields to 126 countries.

COVID-19 Supply Portal

WHO encourages Member States to submit requests for supplies through the COVID-19 Supply Portal, a tool to enable national authorities and all implementing partners supporting COVID-19 national plans to request critical supplies. The Portal may be accessed through the [COVID-19 Partners Platform](#), which provides guidance and instructions on the use of the Portal.

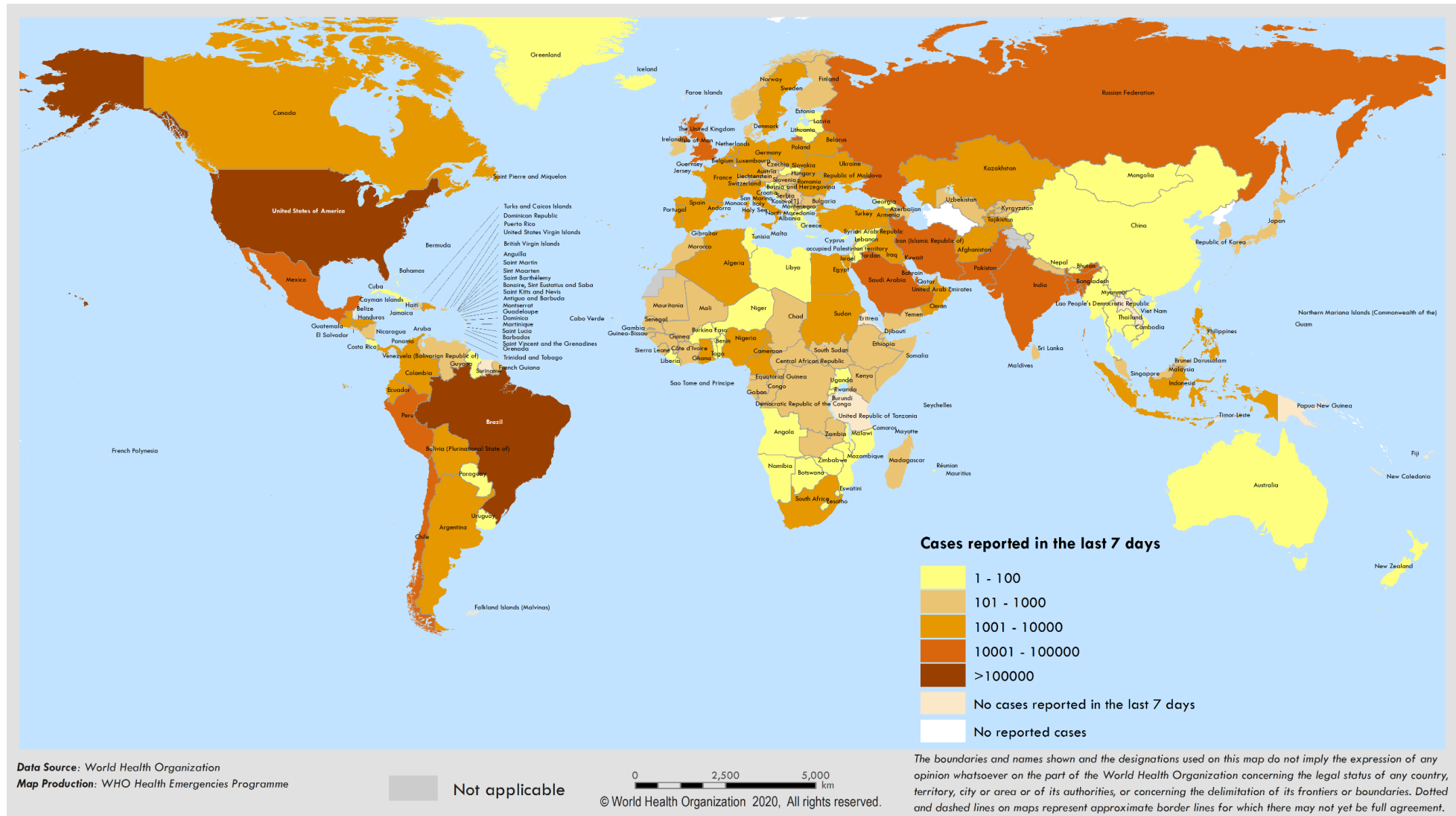
An updated version of the Supply Portal was launched last week, with new features that:

- enable supplying agencies to list supplies.
- add a comments feature
- provide a 'Country viewer' of all requests submitted within one country; designed for country teams and government.
- and, provide a 'Global viewer' of all requests submitted globally; designed for regional offices and HQ.

To date, the Portal has received 117 requests from 47 countries.

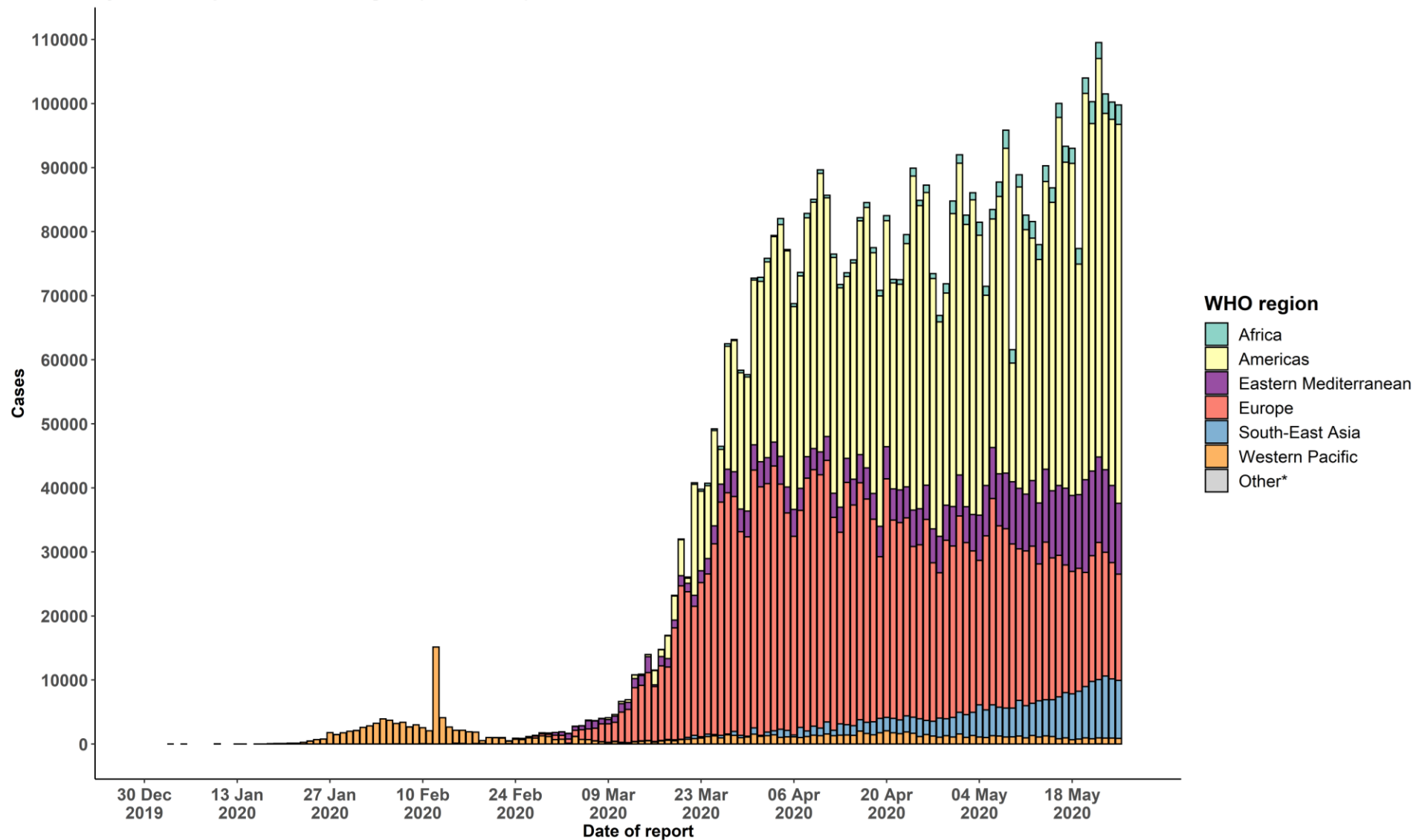
Surveillance

Figure 1. Number of confirmed COVID-19 cases reported in the last seven days by country, territory or area, 20 May to 26 May**



**See [Annex 1](#) for data, table and figure notes.

Figure 2. Number of confirmed COVID-19 cases, by date of report and WHO region, 30 December 2019 through 26 May 2020**



**See [Annex 1](#) for data, table and figure notes.

Table 1. Countries, territories or areas with reported laboratory-confirmed COVID-19 cases and deaths, by WHO region. Data as of 10 AM CEST, 26 May 2020**

Reporting Country/ Territory/Area	Total confirmed cases	Total confirmed new cases	Total deaths	Total new deaths	Transmission classification ⁱ	Days since last reported case
Africa						
South Africa	23 615	1 032	481	52	Community transmission	0
Algeria	8 503	197	609	9	Community transmission	0
Nigeria	8 068	229	233	7	Community transmission	0
Ghana	6 808	125	32	0	Community transmission	0
Cameroon	4 890	490	165	6	Community transmission	0
Guinea	3 322	47	20	0	Community transmission	0
Senegal	3 130	83	35	0	Community transmission	0
Côte d'Ivoire	2 423	47	30	0	Community transmission	0
Democratic Republic of the Congo	2 304	164	66	4	Community transmission	0
Gabon	2 135	201	14	2	Community transmission	0
Kenya	1 286	72	52	1	Community transmission	0
Guinea-Bissau	1 173	0	6	0	Community transmission	1
Mali	1 059	29	67	2	Community transmission	0
Equatorial Guinea	1 043	0	12	0	Community transmission	2
Niger	951	6	62	1	Community transmission	0
Zambia	920	0	7	0	Community transmission	3
Burkina Faso	841	9	52	0	Community transmission	0
Sierra Leone	735	14	42	2	Community transmission	0
Chad	687	12	61	1	Community transmission	0
Ethiopia	655	73	5	0	Clusters of cases	0
South Sudan	655	0	8	0	Clusters of cases	1

Reporting Country/ Territory/Area	Total confirmed cases	Total confirmed new cases	Total deaths	Total new deaths	Transmission classification ¹	Days since last reported case
Central African Republic	652	48	1	0	Clusters of cases	0
Madagascar	542	15	2	0	Clusters of cases	0
Congo	531	44	17	1	Community transmission	0
United Republic of Tanzania	509	0	21	0	Community transmission	18
Cabo Verde	390	10	3	0	Clusters of cases	0
Togo	386	5	13	1	Community transmission	0
Rwanda	336	9	0	0	Sporadic cases	0
Mauritius	334	0	10	0	Clusters of cases	1
Uganda	304	0	0	0	Sporadic cases	1
Liberia	265	0	26	0	Community transmission	1
Mauritania	262	25	9	3	Clusters of cases	0
Eswatini	256	6	2	0	Clusters of cases	0
Mozambique	209	15	1	1	Clusters of cases	0
Benin	191	0	3	0	Community transmission	1
São Tomé and Príncipe	165	- 9	10	1	Clusters of cases	0
Malawi	101	18	4	0	Clusters of cases	0
Angola	69	0	4	0	Clusters of cases	1
Zimbabwe	56	0	4	0	Sporadic cases	2
Comoros	43	0	1	0	Community transmission	1
Burundi	42	0	1	0	Clusters of cases	8
Eritrea	39	0	0	0	Sporadic cases	37
Botswana	35	0	1	0	Clusters of cases	1
Gambia	25	0	1	0	Sporadic cases	3

Reporting Country/ Territory/Area	Total confirmed cases	Total confirmed new cases	Total deaths	Total new deaths	Transmission classification ⁱ	Days since last reported case
Namibia	21	0	0	0	Sporadic cases	1
Seychelles	11	0	0	0	Clusters of cases	49
Lesotho	2	0	0	0	Sporadic cases	3
Territoriesⁱⁱ						
Mayotte	1 609	22	20	0	Clusters of cases	0
Réunion	456	4	1	0	Clusters of cases	0
Americas						
United States of America	1 618 757	26 158	96 909	1 046	Community transmission	0
Brazil	363 211	15 813	22 666	653	Community transmission	0
Peru	119 959	4 205	3 456	83	Community transmission	0
Canada	85 103	1 022	6 453	73	Community transmission	0
Chile	73 997	4 895	761	43	Community transmission	0
Mexico	68 620	2 764	7 394	215	Community transmission	0
Ecuador	37 355	599	3 203	95	Community transmission	0
Colombia	21 175	998	727	22	Community transmission	0
Dominican Republic	15 073	272	460	2	Community transmission	0
Argentina	12 076	723	452	7	Community transmission	0
Panama	10 926	349	306	7	Community transmission	0
Bolivia (Plurinational State of)	6 263	348	250	10	Community transmission	0
Honduras	3 950	207	180	6	Community transmission	0
Guatemala	3 424	370	58	1	Community transmission	0
El Salvador	1 983	68	35	0	Community transmission	0
Cuba	1 947	6	82	0	Clusters of cases	0
Venezuela (Bolivarian Republic of)	1 121	111	10	0	Community transmission	0

Reporting Country/ Territory/Area	Total confirmed cases	Total confirmed new cases	Total deaths	Total new deaths	Transmission classification ⁱ	Days since last reported case
Haiti	958	93	27	1	Community transmission	0
Costa Rica	930	12	10	0	Clusters of cases	0
Paraguay	865	3	11	0	Community transmission	0
Uruguay	769	5	22	0	Clusters of cases	0
Jamaica	552	2	9	0	Clusters of cases	0
Nicaragua	279	0	17	0	Community transmission	5
Guyana	135	8	10	0	Clusters of cases	0
Trinidad and Tobago	116	0	8	0	Sporadic cases	28
Bahamas	100	0	11	0	Clusters of cases	1
Barbados	92	0	7	0	Clusters of cases	1
Antigua and Barbuda	25	0	3	0	Clusters of cases	22
Grenada	22	0	0	0	Clusters of cases	10
Belize	18	0	2	0	Sporadic cases	41
Saint Lucia	18	0	0	0	Sporadic cases	21
Saint Vincent and the Grenadines	18	0	0	0	Sporadic cases	5
Dominica	16	0	0	0	Clusters of cases	45
Saint Kitts and Nevis	15	0	0	0	Sporadic cases	35
Suriname	11	0	1	0	Sporadic cases	7
Territoriesⁱⁱ						
Puerto Rico	3 260	71	129	2	Community transmission	0
French Guiana	328	49	1	0	Clusters of cases	0
Martinique	197	0	14	0	Clusters of cases	3
Guadeloupe	161	5	14	1	Clusters of cases	0
Bermuda	133	0	9	0	Clusters of cases	1

Reporting Country/ Territory/Area	Total confirmed cases	Total confirmed new cases	Total deaths	Total new deaths	Transmission classification ¹	Days since last reported case
Cayman Islands	129	0	1	0	Clusters of cases	2
Aruba	101	0	3	0	Sporadic cases	20
Sint Maarten	78	0	15	0	Sporadic cases	12
United States Virgin Islands	69	0	6	0	Clusters of cases	15
Saint Martin	39	0	3	0	Sporadic cases	15
Curaçao	17	0	1	0	Sporadic cases	1
Falkland Islands (Malvinas)	13	0	0	0	Clusters of cases	30
Turks and Caicos Islands	12	0	1	0	Sporadic cases	28
Montserrat	11	0	1	0	Sporadic cases	42
British Virgin Islands	8	0	1	0	Sporadic cases	10
Bonaire, Sint Eustatius and Saba	7	1	0	0	No cases	0
Saint Barthélemy	6	0	0	0	Sporadic cases	56
Anguilla	3	0	0	0	Sporadic cases	52
Saint Pierre and Miquelon	1	0	0	0	Sporadic cases	48
Eastern Mediterranean						
Iran (Islamic Republic of)	137 724	2 023	7 451	34	Community transmission	0
Saudi Arabia	74 795	2 235	399	9	Clusters of cases	0
Pakistan	57 705	1 356	1 197	30	Clusters of cases	0
Qatar	45 465	1 751	26	3	Community transmission	0
United Arab Emirates	30 307	822	248	3	Pending	0
Kuwait	21 967	665	165	9	Clusters of cases	0
Egypt	17 967	702	783	19	Clusters of cases	0
Afghanistan	11 831	737	220	1	Clusters of cases	0
Bahrain	9 171	33	14	1	Clusters of cases	0

Reporting Country/ Territory/Area	Total confirmed cases	Total confirmed new cases	Total deaths	Total new deaths	Transmission classification ⁱ	Days since last reported case
Oman	7 770	0	37	0	Clusters of cases	1
Morocco	7 532	99	200	1	Clusters of cases	0
Iraq	4 632	163	163	3	Clusters of cases	0
Sudan	3 976	150	170	5	Community transmission	0
Djibouti	2 468	198	14	4	Clusters of cases	0
Somalia	1 689	95	66	5	Sporadic cases	0
Lebanon	1 119	5	26	0	Clusters of cases	0
Tunisia	1 051	0	48	0	Community transmission	1
Jordan	711	3	9	0	Clusters of cases	0
Yemen	237	11	45	2	Pending	0
Syrian Arab Republic	106	20	4	0	Community transmission	0
Libya	75	0	3	0	Clusters of cases	2
Territoriesⁱⁱ						
occupied Palestinian territory	602	0	5	0	Clusters of cases	3
Europe						
Russian Federation	362 342	8 915	3 807	174	Clusters of cases	0
The United Kingdom	261 188	1 625	36 914	121	Community transmission	0
Spain	235 400	- 372	26 834	- 1 918	Community transmission	0
Italy	230 158	300	32 877	92	Community transmission	0
Germany	179 002	432	8 302	45	Community transmission	0
Turkey	157 814	987	4 369	29	Community transmission	0
France	142 482	278	28 379	64	Community transmission	0
Belgium	57 342	250	9 312	32	Community transmission	0
Netherlands	45 445	209	5 830	8	Community transmission	0

Reporting Country/ Territory/Area	Total confirmed cases	Total confirmed new cases	Total deaths	Total new deaths	Transmission classification ¹	Days since last reported case
Belarus	37 144	946	204	5	Community transmission	0
Sweden	33 843	384	4 029	31	Community transmission	0
Portugal	30 788	165	1 330	14	Community transmission	0
Switzerland	30 663	10	1 641	1	Community transmission	0
Ireland	24 698	59	1 606	- 2	Community transmission	0
Poland	21 631	305	1 007	11	Community transmission	0
Ukraine	21 584	339	644	21	Community transmission	0
Romania	18 283	213	1 197	18	Community transmission	0
Israel	16 720	8	280	1	Pending	0
Austria	16 459	20	641	1	Community transmission	0
Denmark	11 387	27	563	1	Community transmission	0
Serbia	11 193	34	239	1	Pending	0
Czechia	9 002	45	317	2	Clusters of cases	0
Kazakhstan	8 969	438	35	0	Pending	0
Norway	8 352	43	235	0	Clusters of cases	0
Armenia	7 402	289	91	4	Clusters of cases	0
Republic of Moldova	7 149	56	265	9	Pending	0
Finland	6 599	20	308	1	Pending	0
Azerbaijan	4 271	149	51	2	Clusters of cases	0
Luxembourg	3 993	1	110	0	Pending	0
Hungary	3 771	15	499	8	Community transmission	0
Uzbekistan	3 261	81	13	0	Clusters of cases	0
Tajikistan	3 100	171	46	0	Pending	0
Greece	2 882	4	172	1	Clusters of cases	0

Reporting Country/ Territory/Area	Total confirmed cases	Total confirmed new cases	Total deaths	Total new deaths	Transmission classification ⁱ	Days since last reported case
Bulgaria	2 433	0	130	0	Clusters of cases	1
Bosnia and Herzegovina	2 405	14	145	4	Community transmission	0
Croatia	2 244	0	100	1	Community transmission	1
North Macedonia	1 999	21	113	0	Clusters of cases	0
Estonia	1 824	1	65	1	Pending	0
Iceland	1 804	0	10	0	Community transmission	2
Lithuania	1 635	12	63	0	Community transmission	0
Slovakia	1 511	2	28	0	Clusters of cases	0
Slovenia	1 469	0	106	0	Clusters of cases	1
Kyrgyzstan	1 468	35	16	0	Clusters of cases	0
Latvia	1 049	2	22	0	Clusters of cases	0
Albania	1 029	25	33	1	Clusters of cases	0
Cyprus	937	2	17	0	Clusters of cases	0
Andorra	763	0	51	0	Community transmission	2
Georgia	732	1	12	0	Community transmission	0
San Marino	672	0	42	0	Community transmission	4
Malta	611	1	6	0	Sporadic cases	0
Montenegro	324	0	9	0	Clusters of cases	20
Monaco	98	0	1	0	Sporadic cases	2
Liechtenstein	83	0	1	0	Pending	30
Holy See	12	0	0	0	Sporadic cases	19
Territoriesⁱⁱ						
Kosovo ^[1]	1 038	6	30	1	Community transmission	0
Isle of Man	336	0	24	0	Pending	4

Reporting Country/ Territory/Area	Total confirmed cases	Total confirmed new cases	Total deaths	Total new deaths	Transmission classification ¹	Days since last reported case
Jersey	306	0	29	0	Community transmission	4
Guernsey	252	0	13	0	Community transmission	23
Faroe Islands	187	0	0	0	Pending	32
Gibraltar	155	0	0	0	Clusters of cases	1
Greenland	12	1	0	0	Pending	0
South-East Asia						
India	145 380	6 535	4 167	146	Clusters of cases	0
Bangladesh	35 585	1 975	501	21	Clusters of cases	0
Indonesia	22 750	479	1 391	19	Community transmission	0
Thailand	3 045	3	57	0	Clusters of cases	0
Maldives	1 395	24	4	0	Clusters of cases	0
Sri Lanka	1 182	41	10	1	Clusters of cases	0
Nepal	682	7	4	1	Sporadic cases	0
Myanmar	203	2	6	0	Clusters of cases	0
Bhutan	27	0	0	0	Sporadic cases	1
Timor-Leste	24	0	0	0	Clusters of cases	32
Western Pacific						
China	84 543	7	4 645	0	Clusters of cases	0
Singapore	31 960	344	23	0	Clusters of cases	0
Japan	16 623	42	846	16	Clusters of cases	0
Philippines	14 319	284	873	5	Community transmission	0
Republic of Korea	11 225	19	269	2	Clusters of cases	0
Malaysia	7 417	172	115	0	Clusters of cases	0

Reporting Country/ Territory/Area	Total confirmed cases	Total confirmed new cases	Total deaths	Total new deaths	Transmission classification ⁱ	Days since last reported case
Australia	7 118	9	102	0	Clusters of cases	0
New Zealand	1 154	0	21	0	Clusters of cases	4
Viet Nam	326	1	0	0	Clusters of cases	0
Brunei Darussalam	141	0	1	0	Clusters of cases	18
Mongolia	141	0	0	0	Sporadic cases	3
Cambodia	124	0	0	0	Sporadic cases	3
Lao People's Democratic Republic	19	0	0	0	Sporadic cases	43
Fiji	18	0	0	0	Sporadic cases	35
Papua New Guinea	8	0	0	0	Sporadic cases	33
Territoriesⁱⁱ						
Guam	161	0	5	0	Clusters of cases	2
French Polynesia	60	0	0	0	Sporadic cases	20
Northern Mariana Islands (Commonwealth of the)	22	0	2	0	Pending	4
New Caledonia	18	0	0	0	Sporadic cases	53
Subtotal for all regions	5 403 771	99 780	343 501	1 486		
Other*	712	0	13	0	Not applicable	71
International commercial vessel	29	0	0	0	Pending	3
Grand total	5 404 512	99 780	343 514	1 486		

**See [Annex 1](#) for data, table and figure notes.

Technical guidance and other resources

- To view all technical guidance documents regarding COVID-19, please go to [this webpage](#).
- Updates from WHO regional offices
 - [WHO AFRO](#)
 - [WHO EMRO](#)
 - [WHO EURO](#)
 - [WHO PAHO](#)
 - [WHO SEARO](#)
 - [WHO WPRO](#)
- [Research and Development](#)
- [Online courses on COVID-19](#) and in [additional national languages](#)
- [The Strategic Preparedness and Response Plan](#) (SPRP) outlining the support the international community can provide to all countries to prepare and respond to the virus
- [WHO Health Emergency dashboard](#)
- [Weekly COVID-19 Operations Updates](#)

Recommendations and advice for the public

- [Protect yourself](#)
- [Questions and answers](#)
- [Travel advice](#)
- [EPI-WIN](#): tailored information for individuals, organizations and communities

Case definitions

WHO periodically updates the [Global Surveillance for human infection with coronavirus disease \(COVID-19\)](#) document which includes surveillance definitions.

Definition of COVID-19 death

COVID-19 death is defined for surveillance purposes as a death resulting from a clinically compatible illness in a probable or confirmed COVID-19 case, unless there is a clear alternative cause of death that cannot be related to COVID-19 disease (e.g. trauma). There should be no period of complete recovery between the illness and death.

Further guidance for certification and classification (coding) of COVID-19 as cause of death is available [here](#).

Annex 1: Data, table and figure notes

Caution must be taken when interpreting all data presented. Differences are to be expected between information products published by WHO, national public health authorities, and other sources using different inclusion criteria and different data cut-off times. While steps are taken to ensure accuracy and reliability, all data are subject to continuous verification and change. Case detection, definitions, testing strategies, reporting practice, and lag times differ between countries/territories/areas. These factors, amongst others, influence the counts presented, with variable underestimation of true case and death counts, and variable delays to reflecting these data at global level.

The designations employed, and the presentation of these materials do not imply the expression of any opinion whatsoever on the part of WHO concerning the legal status of any country, territory or area or of its authorities, or concerning the delimitation of its frontiers or boundaries. Dotted and dashed lines on maps represent approximate border lines for which there may not yet be full agreement. Countries, territories and areas are arranged under the administering WHO region.

The mention of specific companies or of certain manufacturers' products does not imply that they are endorsed or recommended by WHO in preference to others of a similar nature that are not mentioned. Errors and omissions excepted, the names of proprietary products are distinguished by initial capital letters.

^[1] All references to Kosovo should be understood to be in the context of the United Nations Security Council resolution 1244 (1999). In the map, number of cases of Serbia and Kosovo (UNSCR 1244, 1999) have been aggregated for visualization purposes.

Counts reflect laboratory-confirmed cases and deaths, based on [WHO case definitions](#), unless stated otherwise (see Country, territory, or area-specific updates and errata), and include both domestic and repatriated cases.

Other*: includes cases reported from an international conveyance (Diamond Princess).

Due to the recent trend of countries conducting data reconciliation exercises which remove large numbers of cases or deaths from their total counts, WHO will now display such data as negative numbers in the “new cases” / “new deaths” columns as appropriate. This will aid readers in identifying when such adjustments occur. When additional details become available that allow the subtractions to be suitably apportioned to previous days, graphics will be updated accordingly. Prior situation reports will not be edited; see covid19.who.int for the most up-to-date data.

Additional table notes

ⁱ Transmission classification is based on a process of country/territory/area self-reporting. Classifications are reviewed on a weekly basis, may be revised as new information becomes available, and are based on the highest category reported. Differing degrees of transmission may be present within countries/territories/areas. Categories:

- No cases: with no confirmed cases
- Sporadic cases: with one or more cases, imported or locally detected.

- Clusters of cases: experiencing cases, clustered in time, geographic location and/or by common exposures.
- Community transmission: experiencing larger outbreaks of local transmission defined through an assessment of factors including, but not limited to: large numbers of cases not linkable to transmission chains; large numbers of cases from sentinel lab surveillance; and/or multiple unrelated clusters in several areas of the country/territory/area.
- Pending: transmission classification has not been reported to WHO.

ii “Territories” include territories, areas, overseas dependencies and other jurisdictions of similar status.

Country, territory, or area-specific updates and errata

- **Update 26 May 2020, Ireland:** Counts adjusted retrospectively by national authorities: 2 deaths were excluded.
- **Update 26 May 2020, São Tomé and Príncipe:** Counts adjusted retrospectively by national authorities: 9 cases were excluded.
- **Update 26 May 2020, French Polynesia:** The last three publications (on 23 May, 24 May and 25 May) attributed 29 cases from an international commercial vessel to French Polynesia. This has been updated.
- **Update 26 May 2020, Spain:** Counts adjusted retrospectively by national authorities: 372 cases and 1918 deaths were excluded.
- **Update 26 May 2020, Slovenia:** Counts adjusted retrospectively by national authorities: 40 cases have been excluded.