

Coronavirus disease 2019 (COVID-19) Situation Report – 55

Data as reported by national authorities by 10 AM CET 15 March 2020

HIGHLIGHTS

- Nine new countries/territories/areas (African Region [7], European Region [1] and Region of Americas [1]) in have reported cases of COVID-19 in the past 24 hours.
- A WHO high-level technical mission concluded a visit to Iraq to support the Iraqi Ministry of Health in their COVID-19 prevention and containment measures. WHO is working around the clock to establish 3 negative-pressure [contagious respiratory disease isolation] rooms in Baghdad, Erbil and Basra to accommodate patients who might require more sophisticated medical treatment. For detailed information, please see [here](#).

SITUATION IN NUMBERS total and new cases in last 24 hours

Globally

153 517 confirmed

(10 982 new)

5735 deaths (343 new)

China

81 048 confirmed (27 new)

3204 deaths (10 new)

Outside of China

72 469 confirmed (10 955)

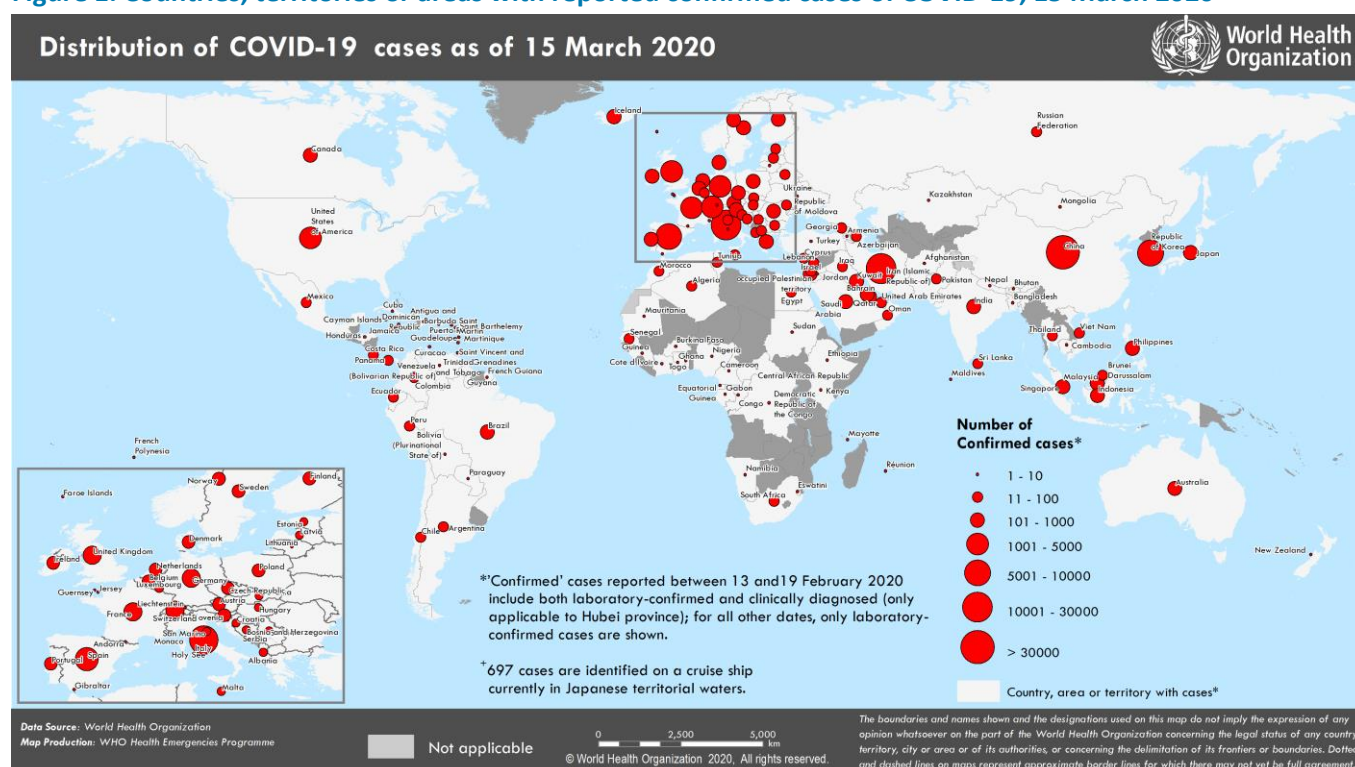
2531 deaths (333 new)

143 countries/territories/
areas (09 new)

WHO RISK ASSESSMENT

China	Very High
Regional Level	Very High
Global Level	Very High

Figure 1. Countries, territories or areas with reported confirmed cases of COVID-19, 15 March 2020



SURVEILLANCE

Table 1. Confirmed and suspected cases of COVID-19 acute respiratory disease reported by provinces, regions and cities in China, Data as of 15 March 2020

Province/ Region/ City	Population (10,000s)	In last 24 hours			Cumulative	
		Confirmed cases	Suspected cases	Deaths	Confirmed cases	Deaths
Hubei	5917	4	1	10	67794	3085
Guangdong	11346	1	1	0	1357	8
Henan	9605	0	0	0	1273	22
Zhejiang	5737	4	2	0	1231	1
Hunan	6899	0	0	0	1018	4
Anhui	6324	0	0	0	990	6
Jiangxi	4648	0	0	0	935	1
Shandong	10047	0	0	0	760	7
Jiangsu	8051	0	1	0	631	0
Chongqing	3102	0	0	0	576	6
Sichuan	8341	0	0	0	539	3
Heilongjiang	3773	0	0	0	482	13
Beijing	2154	5	9	0	442	8
Shanghai	2424	3	24	0	353	3
Hebei	7556	0	0	0	318	6
Fujian	3941	0	0	0	296	1
Guangxi	4926	0	0	0	252	2
Shaanxi	3864	0	0	0	245	2
Yunnan	4830	0	0	0	174	2
Hainan	934	0	0	0	168	6
Guizhou	3600	0	0	0	146	2
Hong Kong SAR	745	4	0	0	141	4
Tianjin	1560	0	1	0	136	3
Shanxi	3718	0	0	0	133	0
Gansu	2637	3	0	0	132	2
Liaoning	4359	0	0	0	125	1
Jilin	2704	0	0	0	93	1
Xinjiang	2487	0	0	0	76	3
Ningxia	688	0	0	0	75	0
Inner Mongolia	2534	0	0	0	75	1
Taipei and environs	2359	3	0	0	53	1
Qinghai	603	0	0	0	18	0
Macao SAR	66	0	0	0	10	0
Xizang	344	0	0	0	1	0
Total	142823	27	39	10	81048	3204

Table 2. Countries, territories or areas outside China with reported laboratory-confirmed COVID-19 cases and deaths. Data as of 15 March 2020*

Reporting Country/ Territory/Area [†]	Total confirmed ‡ cases	Total confirmed new cases ¹	Total deaths	Total new deaths ¹	Transmission classification [§]	Days since last reported case
Western Pacific Region						
Republic of Korea	8162	76	75	3	Local transmission	0
Japan	780	64	22	1	Local transmission	0
Australia	249	52	3	0	Local transmission	0
Malaysia	238	41	0	0	Local transmission	0
Singapore	212	12	0	0	Local transmission	0
Philippines	111	47	6	4	Local transmission	0
Viet Nam	53	5	0	0	Local transmission	0
Brunei Darussalam	40	15	0	0	Local transmission	0
Cambodia	7	0	0	0	Local transmission	1
New Zealand	6	0	0	0	Local transmission	1
Mongolia	1	0	0	0	Imported cases only	5
Territories**						
French Polynesia	3	2	0	0	Imported cases only	0
European Region						
Italy	21157	3497	1441	173	Local transmission	0
Spain	5753	1522	136	16	Local transmission	0
France	4469	829	91	12	Local transmission	0
Germany	3795	733	8	2	Local transmission	0
Switzerland	1359	234	11	5	Local transmission	0
The United Kingdom	1144	342	21	11	Local transmission	0
Netherlands	959	155	12	2	Local transmission	0
Sweden	924	149	0	0	Local transmission	0
Norway	907	157	1	0	Local transmission	0
Denmark	827	26	0	0	Local transmission	0
Austria	800	296	1	0	Local transmission	0
Belgium	689	90	0	0	Local transmission	0
Greece	228	130	2	1	Local transmission	0
Czechia	214	64	0	0	Local transmission	0
Finland	210	101	0	0	Local transmission	0
Israel	178	78	0	0	Local transmission	0
Slovenia	141	0	0	0	Local transmission	1
Iceland	138	77	0	0	Local transmission	0
Ireland	129	39	2	1	Local transmission	0
Romania	123	59	0	0	Local transmission	0
Portugal	112	0	0	0	Local transmission	1
Poland	111	47	3	2	Local transmission	0
San Marino	92	26	5	3	Local transmission	0
Estonia	79	0	0	0	Local transmission	1
Slovakia	44	14	0	0	Local transmission	0
Bulgaria	43	36	2	1	Local transmission	0
Serbia	41	10	0	0	Local transmission	0
Albania	38	5	1	0	Local transmission	0
Luxembourg	38	0	1	0	Local transmission	1
Croatia	37	10	0	0	Local transmission	0
Russian Federation	34	0	0	0	Imported cases only	2
Hungary	32	13	0	0	Local transmission	0
Georgia	30	5	0	0	Imported cases only	0
Latvia	30	14	0	0	Imported cases only	0

Belarus	21	0	0	0	Local transmission	1
Cyprus	21	7	0	0	Imported cases only	0
Azerbaijan	19	8	0	0	Imported cases only	0
Bosnia and Herzegovina	18	7	0	0	Local transmission	0
North Macedonia	13	4	0	0	Local transmission	0
Malta	12	0	0	0	Imported cases only	2
Republic of Moldova	12	4	0	0	Imported cases only	0
Lithuania	9	3	0	0	Imported cases only	0
Armenia	8	0	0	0	Local transmission	1
Kazakhstan	6	6	0	0	Imported cases only	0
Turkey	5	0	0	0	Imported cases only	1
Liechtenstein	4	0	0	0	Imported cases only	2
Ukraine	3	0	1	0	Local transmission	1
Andorra	2	0	0	0	Imported cases only	1
Monaco	2	0	0	0	Under investigation	1
Holy See	1	0	0	0	Under investigation	9
Territories**						
Faroe Islands	9	6	0	0	Imported cases only	0
Gibraltar	1	0	0	0	Under investigation	11
Guernsey	1	0	0	0	Imported cases only	5
Jersey	2	0	0	0	Imported cases only	2
South-East Asia Region						
Indonesia	117	48	4	1	Local transmission	0
India	107	25	2	0	Local transmission	0
Thailand	75	0	1	0	Local transmission	2
Sri Lanka	11	5	0	0	Local transmission	0
Maldives	10	1	0	0	Local transmission	0
Bangladesh	3	0	0	0	Local transmission	6
Bhutan	1	0	0	0	Imported cases only	9
Nepal	1	0	0	0	Imported cases only	51
Eastern Mediterranean Region						
Iran (Islamic Republic of)	12729	1365	608	94	Local transmission	0
Qatar	337	75	0	0	Local transmission	0
Bahrain	211	1	0	0	Local transmission	0
Kuwait	112	12	0	0	Local transmission	0
Saudi Arabia	103	41	0	0	Local transmission	0
Egypt	93	0	2	0	Local transmission	1
Iraq	93	0	9	0	Local transmission	1
Lebanon	93	16	3	0	Local transmission	0
United Arab Emirates	85	0	0	0	Local transmission	2
Pakistan	28	7	0	0	Imported cases only	0
Oman	20	1	0	0	Imported cases only	0
Morocco	18	11	1	0	Local transmission	0
Tunisia	16	0	0	0	Local transmission	1
Afghanistan	10	3	0	0	Imported cases only	0
Jordan	1	0	0	0	Imported cases only	12
Sudan	1	0	0	0	Imported cases only	1
Territories**						
occupied Palestinian territory	38	3	0	0	Local transmission	1
Region of the Americas						
United States of	1678	0	41	0	Local transmission	1

America						
Canada	244	68	1	0	Local transmission	0
Brazil	121	23	0	0	Local transmission	0
Chile	61	18	0	0	Local transmission	0
Argentina	45	11	2	0	Local transmission	0
Peru	43	15	0	0	Local transmission	0
Mexico	41	15	0	0	Imported cases only	0
Panama	27	0	1	0	Local transmission	1
Colombia	24	8	0	0	Local transmission	0
Costa Rica	23	0	0	0	Local transmission	1
Ecuador	23	0	0	0	Local transmission	1
Jamaica	8	1	0	0	Local transmission	0
Guyana	1	0	1	0	Imported cases only	2
Paraguay	6	0	0	0	Local transmission	1
Dominican Republic	5	0	0	0	Imported cases only	5
Cuba	4	0	0	0	Imported cases only	1
Bolivia (Plurinational State of)	3	0	0	0	Imported cases only	2
Puerto Rico	3	0	0	0	Imported cases only	1
Honduras	2	0	0	0	Imported cases only	3
Venezuela (Bolivarian Republic of)	2	0	0	0	Imported cases only	1
Antigua and Barbuda	1	0	0	0	Imported cases only	1
Saint Vincent and the Grenadines	1	0	0	0	Imported cases only	2
Trinidad and Tobago	1	0	0	0	Imported cases only	1
Territories**						
French Guiana	7	1	0	0	Imported cases only	2
Martinique	10	4	0	0	Imported cases only	0
Saint Martin	2	0	0	0	Under investigation	12
Saint Barthelemy	1	0	0	0	Under investigation	12
Cayman Islands	1	0	0	0	Imported cases only	1
Guadeloupe	3	2	0	0	Imported cases only	0
Curaçao	2	2	0	0	Imported cases only	0
African Region						
South Africa	38	21	0	0	Local transmission	0
Algeria	37	11	3	1	Local transmission	0
Senegal	21	11	0	0	Local transmission	0
Burkina Faso	3	1	0	0	Imported cases only	0
Cameroon	3	1	0	0	Local transmission	0
Cote d'Ivoire	3	2	0	0	Imported cases only	0
Democratic Republic of the Congo	2	0	0	0	Imported cases only	1
Ghana	2	1	0	0	Imported cases only	0
Namibia	2	2	0	0	Imported cases only	0
Nigeria	2	0	0	0	Imported cases only	6
Central African Republic	1	1	0	0	Imported cases only	0
Congo	1	1	0	0	Imported cases only	0
Equatorial Guinea	1	1	0	0	Imported cases only	0
Eswatini	1	1	0	0	Imported cases only	0
Ethiopia	1	0	0	0	Imported cases only	1
Gabon	1	0	0	0	Imported cases only	1
Guinea	1	0	0	0	Imported cases only	1

Kenya	1	0	0	0	Imported cases only	1
Mauritania	1	1	0	0	Imported cases only	0
Togo	1	0	0	0	Imported cases only	8
Territories**						
Réunion	6	1	0	0	Imported cases only	0
Mayotte	1	1	0	0	Imported cases only	0
Subtotal for all regions	71772	10955	2524	333		
International conveyance (Diamond Princess)	697	0	7	0	Local transmission	1
Grand total	72469	10955	2531	333		

*Numbers include both domestic and repatriated cases

†The designations employed and the presentation of the material in this publication do not imply the expression of any opinion whatsoever on the part of WHO concerning the legal status of any country, territory, city or area or of its authorities, or concerning the delimitation of its frontiers or boundaries. Dotted and dashed lines on maps represent approximate border lines for which there may not yet be full agreement.

‡Case classifications are based on [WHO case definitions](#) for COVID-19.

§Transmission classification is based on WHO analysis of available official data and may be subject to reclassification as additional data become available. Countries/territories/areas experiencing multiple types of transmission are classified in the highest category for which there is evidence; they may be removed from a given category if interruption of transmission can be demonstrated. It should be noted that even within categories, different countries/territories/areas may have differing degrees of transmission as indicated by the differing numbers of cases and other factors. Not all locations within a given country/territory/area are equally affected.

Terms:

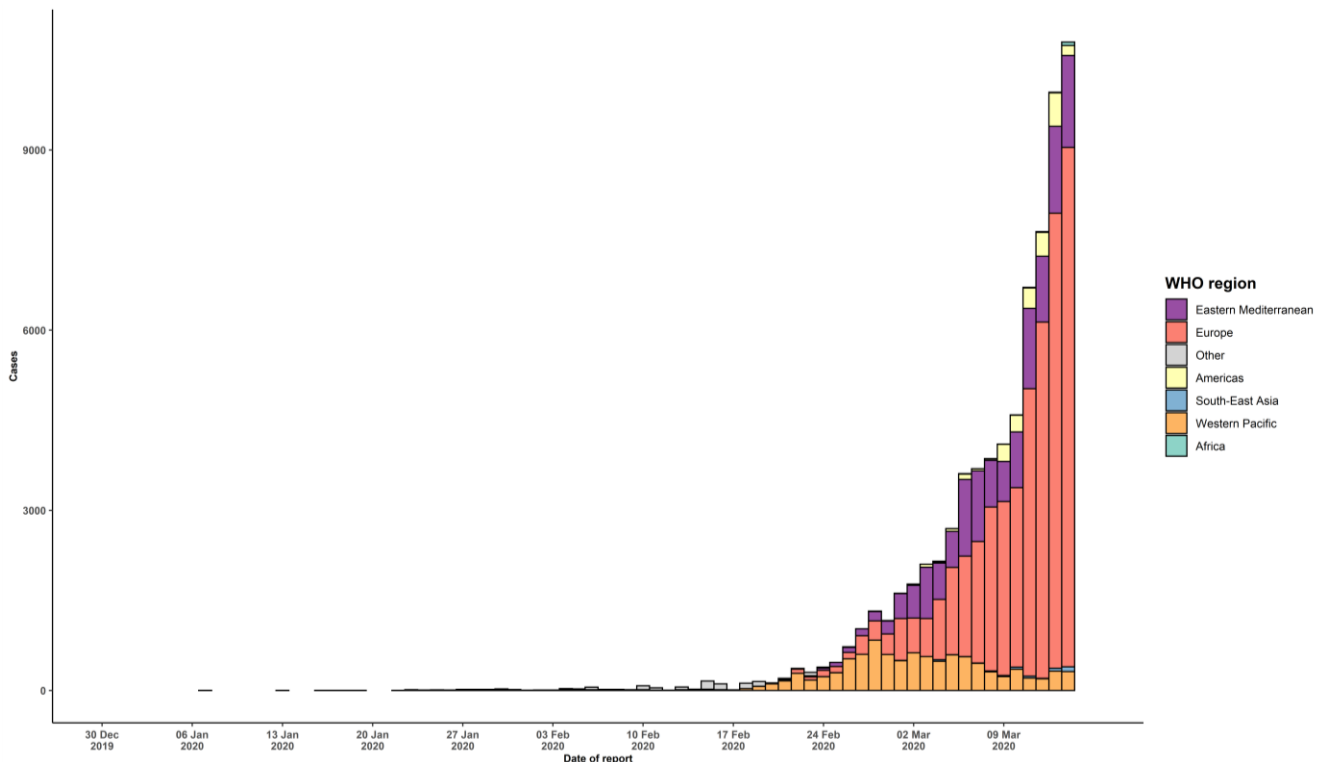
- **Community transmission** is evidenced by the inability to relate confirmed cases through chains of transmission for a large number of cases, or by increasing positive tests through sentinel samples (routine systematic testing of respiratory samples from established laboratories).
- **Local transmission** indicates locations where the source of infection is within the reporting location.
- **Imported cases only** indicates locations where all cases have been acquired outside the location of reporting.
- **Under investigation** indicates locations where type of transmission has not been determined for any cases.
- **Interrupted transmission** indicates locations where interruption of transmission has been demonstrated (details to be determined)

** "Territories" include territories, areas, overseas dependencies and other jurisdictions of similar status

¹Due to a retrospective data consolidation exercise, some numbers may not reflect the exact difference between yesterday's and today's totals.

New countries/territories/areas are shown in red.

Figure 2. Epidemic curve of confirmed COVID-19 cases reported outside of China (n=72 469), by date of report and WHO region through 15 March 2020



STRATEGIC OBJECTIVES

WHO's strategic objectives for this response are to:

- Interrupt human-to-human transmission including reducing secondary infections among close contacts and health care workers, preventing transmission amplification events, and preventing further international spread*;
- Identify, isolate and care for patients early, including providing optimized care for infected patients;
- Identify and reduce transmission from the animal source;
- Address crucial unknowns regarding clinical severity, extent of transmission and infection, treatment options, and accelerate the development of diagnostics, therapeutics and vaccines;
- Communicate critical risk and event information to all communities and counter misinformation;
- Minimize social and economic impact through multisectoral partnerships.

*This can be achieved through a combination of public health measures, such as rapid identification, diagnosis and management of the cases, identification and follow up of the contacts, infection prevention and control in health care settings, implementation of health measures for travelers, awareness-raising in the population and risk communication.

PREPAREDNESS AND RESPONSE

- To view all technical guidance documents regarding COVID-19, please go to [this webpage](#).
- WHO has developed interim guidance for laboratory diagnosis, advice on the use of masks during home care and in health care settings in the context of the novel coronavirus (2019-nCoV) outbreak, clinical management, infection prevention and control in health care settings, home care for patients with suspected novel coronavirus, risk communication and community engagement and Global Surveillance for human infection with novel coronavirus (2019-nCoV).
- WHO is working closely with International Air Transport Association (IATA) and have jointly developed a guidance document to provide advice to cabin crew and airport workers, based on country queries. The guidance can be found on the [IATA webpage](#).
- WHO has been in regular and direct contact with Member States where cases have been reported. WHO is also informing other countries about the situation and providing support as requested.
- WHO is working with its networks of researchers and other experts to coordinate global work on surveillance, epidemiology, mathematical modelling, diagnostics and virology, clinical care and treatment, infection prevention and control, and risk communication. WHO has issued interim guidance for countries, which are updated regularly.
- WHO has prepared a [disease commodity package](#) that includes an essential list of biomedical equipment, medicines and supplies necessary to care for patients with 2019-nCoV.
- WHO has provided recommendations to reduce risk of [transmission from animals to humans](#).
- WHO has published an [updated advice for international traffic in relation to the outbreak of the novel coronavirus 2019-nCoV](#).
- WHO has activated the R&D blueprint to accelerate diagnostics, vaccines, and therapeutics.
- OpenWHO is an interactive, web-based, knowledge-transfer platform offering online courses to improve the response to health emergencies. [COVID-19 courses can be found here](#). Specifically, WHO has developed online courses on the following topics: A general introduction to emerging respiratory viruses, including novel

coronaviruses (available in Arabic, English, French, Chinese, Spanish, Portuguese, and Russian); Critical Care of Severe Acute Respiratory Infections (available in English and French); Health and safety briefing for respiratory diseases - ePROTECT (available in English, French, and Russian); Infection Prevention and Control for Novel Coronavirus (COVID-19) (available in English and Russian); and COVID-19 Operational Planning Guidelines and COVID-19 Partners Platform to support country preparedness and response.

- WHO is providing guidance on early investigations, which are critical in an outbreak of a new virus. The data collected from the protocols can be used to refine recommendations for surveillance and case definitions, to characterize the key epidemiological transmission features of COVID-19, help understand spread, severity, spectrum of disease, impact on the community and to inform operational models for implementation of countermeasures such as case isolation, contact tracing and isolation. Several protocols are available [here](#). One such protocol is for the investigation of early COVID-19 cases and contacts (the “[First Few X \(FFX\) Cases and contact investigation protocol for 2019-novel coronavirus \(2019-nCoV\) infection](#)”). The protocol is designed to gain an early understanding of the key clinical, epidemiological and virological characteristics of the first cases of COVID-19 infection detected in any individual country, to inform the development and updating of public health guidance to manage cases and reduce the potential spread and impact of infection.

RECOMMENDATIONS AND ADVICE FOR THE PUBLIC

If you are not in an area where COVID-19 is spreading or have not travelled from an area where COVID-19 is spreading or have not been in contact with an infected patient, your risk of infection is low. It is understandable that you may feel anxious about the outbreak. Get the facts from reliable sources to help you accurately determine your risks so that you can take reasonable precautions (see [Frequently Asked Questions](#)). Seek guidance from WHO, your healthcare provider, your national public health authority or your employer for accurate information on COVID-19 and whether COVID-19 is circulating where you live. It is important to be informed of the situation and take appropriate measures to protect yourself and your family (see [Protection measures for everyone](#)).

If you are in an area where there are cases of COVID-19 you need to take the risk of infection seriously. Follow the advice of WHO and guidance issued by national and local health authorities. For most people, COVID-19 infection will cause mild illness however, it can make some people very ill and, in some people, it can be fatal. Older people, and those with pre-existing medical conditions (such as cardiovascular disease, chronic respiratory disease or diabetes) are at risk for severe disease (See [Protection measures for persons who are in or have recently visited \(past 14 days\) areas where COVID-19 is spreading](#)).

CASE DEFINITIONS

WHO periodically updates the [Global Surveillance for human infection with coronavirus disease \(COVID-19\)](#) document which includes case definitions.

For easy reference, case definitions are included below.

Suspect case

- A. A patient with acute respiratory illness (fever and at least one sign/symptom of respiratory disease (e.g., cough, shortness of breath), AND with no other etiology that fully explains the clinical presentation AND a history of travel to or residence in a country/area or territory reporting local transmission (See [situation report](#)) of COVID-19 disease during the 14 days prior to symptom onset.

OR

- B. A patient with any acute respiratory illness AND having been in contact with a confirmed or probable COVID-19 case (see definition of contact) in the last 14 days prior to onset of symptoms;

OR

- C. A patient with severe acute respiratory infection (fever and at least one sign/symptom of respiratory disease (e.g., cough, shortness breath) AND requiring hospitalization AND with no other etiology that fully explains the clinical presentation.

Probable case

A suspect case for whom testing for COVID-19 is inconclusive.

- Inconclusive being the result of the test reported by the laboratory

Confirmed case

A person with laboratory confirmation of COVID-19 infection, irrespective of clinical signs and symptoms.

- Information regarding laboratory guidance can be found [here](#).