

# Coronavirus disease (COVID-19)

## Situation Report – 120

Data as received by WHO from national authorities by 10:00 CEST, 19 May 2020

### Highlights

In his opening remarks at the World Health Assembly, WHO Director-General Dr Tedros declared: [‘We have come together as the nations of the world to confront the defining health crisis of our time.’](#) In concluding he asserted that the COVID-19 pandemic reminds us that we need a healthier, safer and fairer world with a stronger WHO to support this goal.

Countries around the world have put in place a range of public health and social measures to suppress or stop community spread of COVID-19. [WHO has published a document to provide an overview of public health and social measures](#), and to propose strategies to limit any possible harm resulting from these interventions.

A new WHO report on the health behaviours of 11–15-year-olds in Europe reveals [more adolescents have been reporting mental health concerns](#). The results were based on data between 2014 and 2018 and provide a baseline against which future studies can measure the impact of COVID-19 on young people’s lives.

The [WHO Regional Office for the Western Pacific has released a timeline](#) outlining some of the key moments and actions to respond to COVID-19 in the Region.

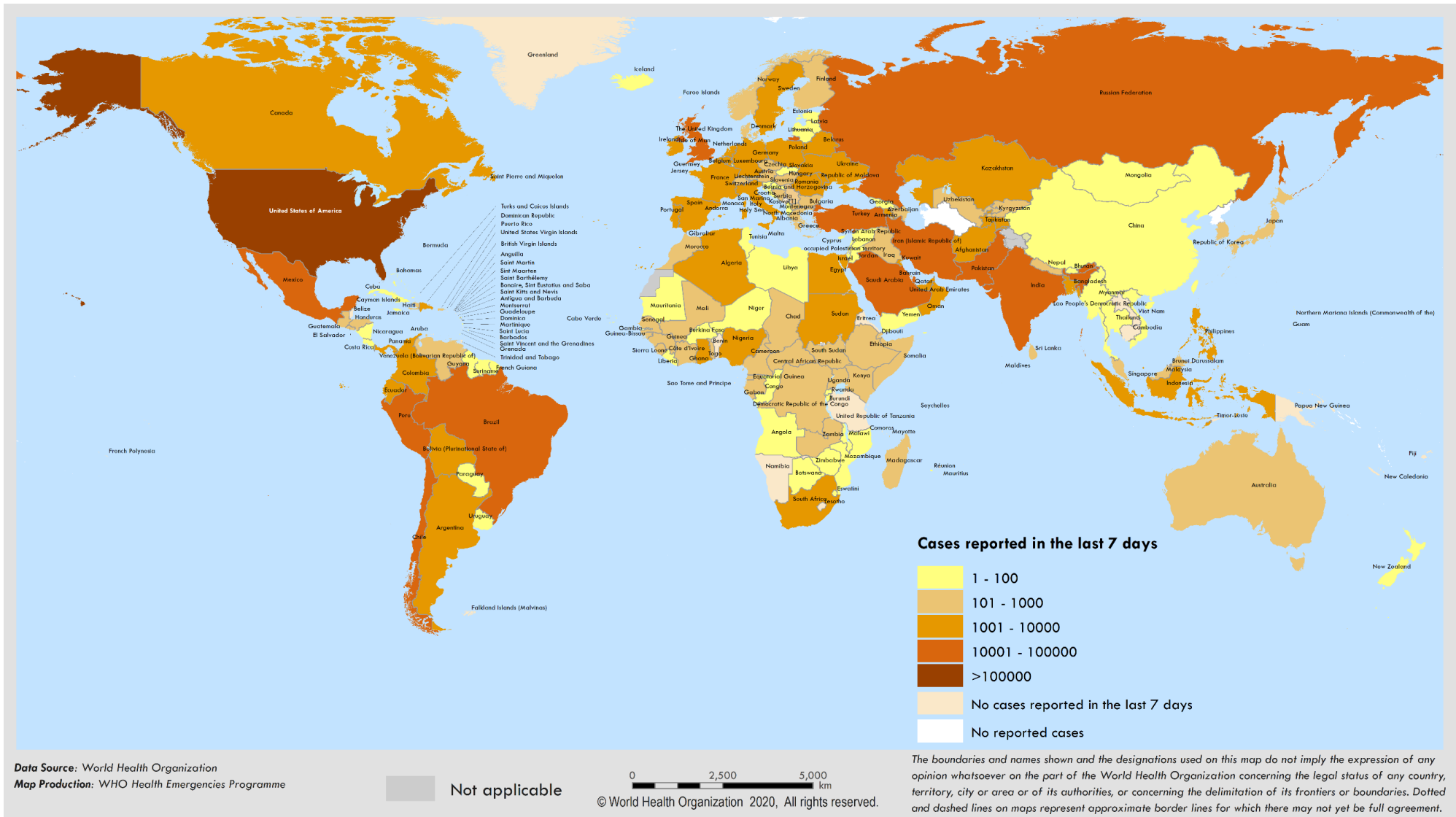
### Situation in numbers (by WHO Region)

Total (new cases in last 24 hours)

<b>Globally</b>	4 711 830 cases (93 009)	315 471 deaths (3 624)
<b>Africa</b>	63 521 cases (2 358)	1 796 deaths (48)
<b>Americas</b>	2 069 661 cases (51 850)	123 970 deaths (2 361)
<b>Eastern Mediterranean</b>	350 405 cases (11 845)	10 149 deaths (170)
<b>Europe</b>	1 909 592 cases (19 125)	167 998 deaths (825)
<b>South-East Asia</b>	148 761 cases (7 168)	4 780 deaths (198)
<b>Western Pacific</b>	169 178 cases (663)	6 765 deaths (22)

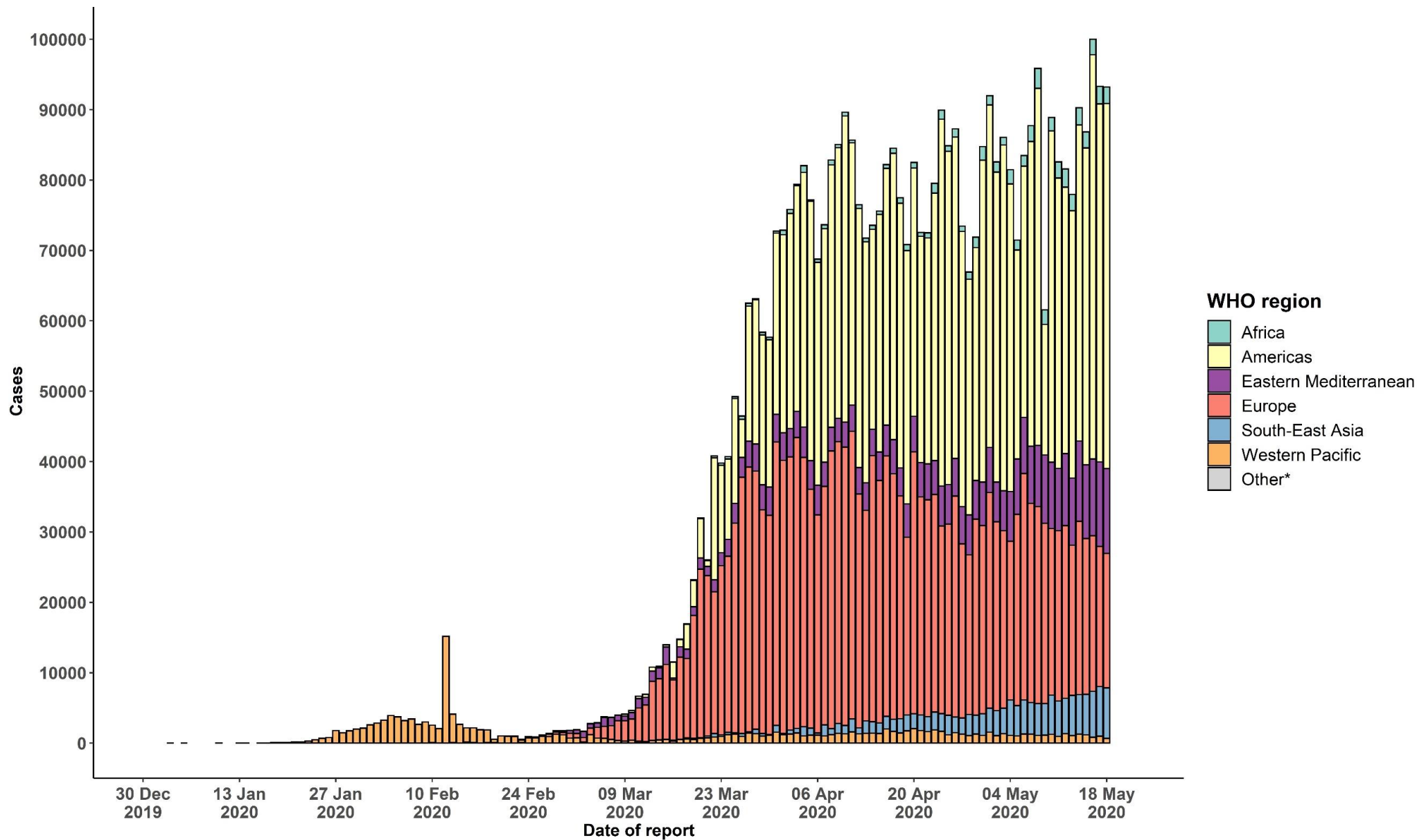
# Surveillance

Figure 1. Number of confirmed COVID-19 cases reported in the last seven days by country, territory or area, 13 May to 19 May\*\*



\*\*See Annex 1 for data, table and figure notes.

Figure 2. Number of confirmed COVID-19 cases, by date of report and WHO region, 30 December 2019 through 19 May 2020\*\*



\*\*See Annex 1 for data, table and figure notes.

**Table 1. Countries, territories or areas with reported laboratory-confirmed COVID-19 cases and deaths, by WHO region. Data as of 10 AM CEST, 19 May 2020\*\***

Reporting Country/Territory/Area	Total confirmed cases	Total confirmed new cases	Total deaths	Total new deaths	Transmission classification <sup>i</sup>	Days since last reported case
Africa						
South Africa	16 433	918	286	22	Community transmission	0
Algeria	7 201	182	555	7	Community transmission	0
Nigeria	6 175	216	191	9	Community transmission	0
Ghana	5 735	0	29	0	Community transmission	2
Cameroon	3 529	482	140	1	Community transmission	0
Guinea	2 796	69	16	0	Community transmission	0
Senegal	2 544	64	26	1	Community transmission	0
Côte d'Ivoire	2 119	10	28	1	Community transmission	0
Democratic Republic of the Congo	1 537	83	60	0	Community transmission	0
Gabon	1 432	112	11	0	Community transmission	0
Guinea-Bissau	1 038	48	6	2	Community transmission	0
Kenya	912	25	50	0	Community transmission	0
Niger	909	5	55	1	Community transmission	0
Mali	874	14	52	0	Community transmission	0
Equatorial Guinea	825	106	7	0	Community transmission	0
Burkina Faso	796	0	51	0	Community transmission	1
Zambia	761	8	7	0	Community transmission	0
Chad	519	16	54	1	Community transmission	0
Sierra Leone	519	14	33	1	Clusters of cases	0
United Republic of Tanzania	509	0	21	0	Community transmission	11
Congo	414	4	15	0	Community transmission	0

Reporting Country/Territory/Area	Total confirmed cases	Total confirmed new cases	Total deaths	Total new deaths	Transmission classification <sup>1</sup>	Days since last reported case
Ethiopia	352	35	5	0	Clusters of cases	0
Central African Republic	336	9	0	0	Sporadic cases	0
Mauritius	332	0	10	0	Clusters of cases	22
Togo	330	29	12	1	Community transmission	0
Cabo Verde	328	0	3	0	Clusters of cases	2
Madagascar	322	18	1	0	Clusters of cases	0
Rwanda	297	5	0	0	Sporadic cases	0
South Sudan	282	0	4	0	Clusters of cases	1
Uganda	260	33	0	0	Sporadic cases	0
Liberia	229	3	22	1	Community transmission	0
Eswatini	205	2	2	0	Clusters of cases	0
São Tomé and Príncipe	165	-4	7	0	Clusters of cases	0
Mozambique	145	8	0	0	Clusters of cases	0
Benin	129	-210	2	0	Community transmission	0
Mauritania	81	19	4	0	Sporadic cases	0
Malawi	70	0	3	0	Clusters of cases	1
Angola	50	2	2	0	Clusters of cases	0
Zimbabwe	46	2	4	0	Sporadic cases	0
Burundi	42	0	1	0	Clusters of cases	1
Eritrea	39	0	0	0	Sporadic cases	30
Botswana	25	0	1	0	Clusters of cases	2
Gambia	24	0	1	0	Sporadic cases	1
Namibia	16	0	0	0	Sporadic cases	43

Reporting Country/Territory/Area	Total confirmed cases	Total confirmed new cases	Total deaths	Total new deaths	Transmission classification <sup>1</sup>	Days since last reported case
Comoros	11	0	1	0	Community transmission	9
Seychelles	11	0	0	0	Clusters of cases	42
Lesotho	1	0	0	0	Pending	5
<b>Territories<sup>ii</sup></b>						
Mayotte	1 370	28	18	0	Clusters of cases	0
Réunion	446	3	0	0	Clusters of cases	0
<b>Americas</b>						
United States of America	1 464 232	31 967	88 574	1 394	Community transmission	0
Brazil	241 080	7 938	16 118	485	Community transmission	0
Peru	92 273	3 732	2 648	125	Community transmission	0
Canada	77 306	1 102	5 805	103	Community transmission	0
Mexico	49 219	2 075	5 177	132	Community transmission	0
Chile	46 059	2 278	478	28	Community transmission	0
Ecuador	33 182	459	2 736	48	Community transmission	0
Colombia	15 574	635	574	12	Community transmission	0
Dominican Republic	12 725	411	434	6	Community transmission	0
Panama	9 606	157	275	6	Community transmission	0
Argentina	8 068	263	373	7	Community transmission	0
Bolivia (Plurinational State of)	4 088	262	169	4	Clusters of cases	0
Honduras	2 646	81	142	4	Community transmission	0
Guatemala	1 912	149	35	2	Clusters of cases	0
Cuba	1 881	9	79	0	Clusters of cases	0
El Salvador	1 413	75	30	3	Clusters of cases	0
Costa Rica	863	10	10	0	Clusters of cases	0

Reporting Country/Territory/Area	Total confirmed cases	Total confirmed new cases	Total deaths	Total new deaths	Transmission classification <sup>i</sup>	Days since last reported case
Paraguay	788	2	11	0	Community transmission	0
Uruguay	734	0	20	1	Clusters of cases	1
Venezuela (Bolivarian Republic of)	618	77	10	0	Clusters of cases	0
Jamaica	520	3	9	0	Clusters of cases	0
Haiti	456	98	20	0	Clusters of cases	0
Guyana	117	0	10	0	Clusters of cases	1
Trinidad and Tobago	116	0	8	0	Sporadic cases	21
Bahamas	96	0	11	0	Clusters of cases	3
Barbados	88	2	7	0	Clusters of cases	0
Antigua and Barbuda	25	0	3	0	Clusters of cases	15
Nicaragua	25	0	8	0	Clusters of cases	5
Grenada	22	0	0	0	Clusters of cases	3
Belize	18	0	2	0	Sporadic cases	34
Saint Lucia	18	0	0	0	Sporadic cases	14
Saint Vincent and the Grenadines	17	0	0	0	Sporadic cases	14
Dominica	16	0	0	0	Clusters of cases	38
Saint Kitts and Nevis	15	0	0	0	Sporadic cases	28
Suriname	11	1	1	0	Sporadic cases	0
<b>Territories<sup>ii</sup></b>						
Puerto Rico	2 710	64	124	1	Clusters of cases	0
French Guiana	197	0	1	0	Clusters of cases	1
Martinique	192	0	14	0	Clusters of cases	2
Guadeloupe	155	0	13	0	Clusters of cases	6
Bermuda	123	0	9	0	Clusters of cases	2

Reporting Country/Territory/Area	Total confirmed cases	Total confirmed new cases	Total deaths	Total new deaths	Transmission classification <sup>1</sup>	Days since last reported case
Aruba	101	0	3	0	Sporadic cases	13
Cayman Islands	94	0	1	0	Clusters of cases	2
Sint Maarten	78	0	15	0	Sporadic cases	5
United States Virgin Islands	69	0	6	0	Clusters of cases	8
Saint Martin	39	0	3	0	Sporadic cases	8
Curaçao	16	0	1	0	Sporadic cases	21
Falkland Islands (Malvinas)	13	0	0	0	Clusters of cases	23
Turks and Caicos Islands	12	0	1	0	Sporadic cases	21
Montserrat	11	0	1	0	Sporadic cases	35
British Virgin Islands	8	0	1	0	Sporadic cases	3
Bonaire, Sint Eustatius and Saba	6	0	0	0	Sporadic cases	21
Saint Barthélemy	6	0	0	0	Sporadic cases	49
Anguilla	3	0	0	0	Sporadic cases	45
Saint Pierre and Miquelon	1	0	0	0	Sporadic cases	41
<b>Eastern Mediterranean</b>						
Iran (Islamic Republic of)	122 492	2 294	7 057	69	Community transmission	0
Saudi Arabia	57 345	2 593	329	17	Clusters of cases	0
Pakistan	43 966	1 841	939	36	Clusters of cases	0
Qatar	33 969	1 365	15	0	Community transmission	0
United Arab Emirates	24 171	813	227	7	Pending	0
Kuwait	15 691	841	121	9	Clusters of cases	0
Egypt	12 764	535	645	15	Clusters of cases	0
Afghanistan	7 655	583	177	4	Clusters of cases	0
Bahrain	7 184	254	12	0	Clusters of cases	0



Reporting Country/Territory/Area	Total confirmed cases	Total confirmed new cases	Total deaths	Total new deaths	Transmission classification <sup>i</sup>	Days since last reported case
Morocco	6 952	82	193	1	Clusters of cases	0
Oman	5 671	292	26	3	Clusters of cases	0
Iraq	3 554	150	127	4	Clusters of cases	0
Sudan	2 591	0	105	0	Community transmission	1
Djibouti	1 518	117	7	3	Clusters of cases	0
Somalia	1 455	34	57	1	Sporadic cases	0
Tunisia	1 043	6	46	1	Community transmission	0
Lebanon	931	20	26	0	Clusters of cases	0
Jordan	629	16	9	0	Clusters of cases	0
Yemen	134	2	21	0	Pending	0
Libya	65	0	3	0	Clusters of cases	2
Syrian Arab Republic	58	0	3	0	Community transmission	1
<b>Territories<sup>ii</sup></b>						
occupied Palestinian territory	567	7	4	0	Clusters of cases	0
<b>Europe</b>						
Russian Federation	299 941	9 263	2 837	115	Clusters of cases	0
The United Kingdom	246 410	2 711	34 796	160	Community transmission	0
Spain	231 606	256	27 709	59	Community transmission	0
Italy	225 886	451	32 007	99	Community transmission	0
Germany	175 210	513	8 007	72	Community transmission	0
Turkey	150 593	1 158	4 171	31	Community transmission	0
France	140 497	461	28 190	131	Community transmission	0
Belgium	55 559	279	9 080	28	Community transmission	0
Netherlands	44 141	146	5 694	14	Community transmission	0

Reporting Country/Territory/Area	Total confirmed cases	Total confirmed new cases	Total deaths	Total new deaths	Transmission classification <sup>1</sup>	Days since last reported case
Belarus	30 572	922	171	6	Community transmission	0
Switzerland	30 514	10	1 602	0	Community transmission	0
Sweden	30 377	234	3 698	19	Community transmission	0
Portugal	29 209	173	1 231	13	Community transmission	0
Ireland	24 200	88	1 547	4	Community transmission	0
Poland	18 885	356	936	11	Community transmission	0
Ukraine	18 876	260	548	13	Community transmission	0
Romania	17 036	165	1 107	10	Community transmission	0
Israel	16 621	14	272	1	Pending	0
Austria	16 179	25	629	0	Community transmission	0
Denmark	10 968	41	548	1	Community transmission	0
Serbia	10 699	89	231	1	Pending	0
Czechia	8 586	111	297	-1	Community transmission	0
Norway	8 249	52	233	1	Clusters of cases	0
Kazakhstan	6 751	311	35	1	Pending	0
Finland	6 380	33	300	2	Pending	0
Republic of Moldova	6 138	78	219	8	Pending	0
Armenia	5 041	218	64	3	Clusters of cases	0
Luxembourg	3 947	2	107	0	Pending	0
Hungary	3 556	21	467	5	Community transmission	0
Azerbaijan	3 387	113	40	1	Clusters of cases	0
Greece	2 836	2	165	2	Clusters of cases	0
Uzbekistan	2 802	40	13	1	Clusters of cases	0
Bosnia and Herzegovina	2 303	14	132	0	Community transmission	0

Reporting Country/Territory/Area	Total confirmed cases	Total confirmed new cases	Total deaths	Total new deaths	Transmission classification <sup>i</sup>	Days since last reported case
Bulgaria	2 259	24	112	2	Clusters of cases	0
Croatia	2 228	2	95	0	Community transmission	0
North Macedonia	1 817	25	104	3	Clusters of cases	0
Iceland	1 802	0	10	0	Community transmission	5
Estonia	1 784	10	64	1	Pending	0
Tajikistan	1 729	407	44	5	Pending	0
Lithuania	1 547	6	59	3	Community transmission	0
Slovakia	1 495	1	28	0	Clusters of cases	0
Slovenia	1 466	0	104	0	Clusters of cases	1
Kyrgyzstan	1 243	27	14	0	Clusters of cases	0
Latvia	1 009	1	19	0	Clusters of cases	0
Albania	948	0	31	0	Clusters of cases	1
Cyprus	917	1	17	0	Clusters of cases	0
Andorra	761	0	51	0	Community transmission	5
Georgia	702	1	12	0	Community transmission	0
San Marino	668	0	41	0	Community transmission	1
Malta	558	5	6	0	Sporadic cases	0
Montenegro	324	0	9	0	Clusters of cases	13
Monaco	96	0	1	0	Sporadic cases	8
Liechtenstein	83	0	1	0	Pending	23
Holy See	12	0	0	0	Sporadic cases	12
<b>Territories<sup>ii</sup></b>						
Kosovo <sup>[1]</sup>	955	0	29	0	Community transmission	1
Isle of Man	335	0	24	0	Pending	1

Reporting Country/Territory/Area	Total confirmed cases	Total confirmed new cases	Total deaths	Total new deaths	Transmission classification <sup>1</sup>	Days since last reported case
Jersey	302	5	27	0	Community transmission	0
Guernsey	252	0	13	0	Community transmission	16
Faroe Islands	187	0	0	0	Pending	25
Gibraltar	147	0	0	0	Clusters of cases	6
Greenland	11	0	0	0	Pending	43
<b>South-East Asia</b>						
India	101 139	4 970	3 163	134	Clusters of cases	0
Bangladesh	23 870	1 602	349	21	Clusters of cases	0
Indonesia	18 010	496	1 191	43	Community transmission	0
Thailand	3 033	2	56	0	Clusters of cases	0
Maldives	1 106	12	4	0	Clusters of cases	0
Sri Lanka	992	11	9	0	Clusters of cases	0
Nepal	375	71	2	0	Sporadic cases	0
Myanmar	191	4	6	0	Clusters of cases	0
Timor-Leste	24	0	0	0	Clusters of cases	25
Bhutan	21	0	0	0	Sporadic cases	3
<b>Western Pacific</b>						
China	84 500	6	4 645	0	Clusters of cases	0
Singapore	28 343	305	22	0	Clusters of cases	0
Japan	16 365	60	763	14	Clusters of cases	0
Philippines	12 718	205	831	7	Community transmission	0
Republic of Korea	11 078	13	263	0	Clusters of cases	0
Australia	7 060	15	99	1	Clusters of cases	0
Malaysia	6 941	47	113	0	Clusters of cases	0

Reporting Country/Territory/Area	Total confirmed cases	Total confirmed new cases	Total deaths	Total new deaths	Transmission classification <sup>i</sup>	Days since last reported case
New Zealand	1 153	4	21	0	Clusters of cases	0
Viet Nam	324	4	0	0	Clusters of cases	0
Brunei Darussalam	141	0	1	0	Clusters of cases	11
Mongolia	140	4	0	0	Sporadic cases	0
Cambodia	122	0	0	0	Sporadic cases	37
Lao People's Democratic Republic	19	0	0	0	Sporadic cases	36
Fiji	18	0	0	0	Sporadic cases	28
Papua New Guinea	8	0	0	0	Sporadic cases	26
<b>Territories<sup>ii</sup></b>						
Guam	149	0	5	0	Clusters of cases	4
French Polynesia	60	0	0	0	Sporadic cases	13
Northern Mariana Islands (Commonwealth of the)	21	0	2	0	Pending	2
New Caledonia	18	0	0	0	Sporadic cases	46
<b>Subtotal for all regions</b>	<b>4 711 118</b>	<b>93 009</b>	<b>315 458</b>	<b>3 624</b>		
Other*	712	0	13	0	-	64
<b>Grand total</b>	<b>4 711 830</b>	<b>93 009</b>	<b>315 471</b>	<b>3 624</b>		

\*\*See [Annex 1](#) for data, table and figure notes.

---

## Technical guidance and other resources

- To view all technical guidance documents regarding COVID-19, please go to [this webpage](#).
- Updates from WHO regional offices
  - [WHO AFRO](#)
  - [WHO EMRO](#)
  - [WHO EURO](#)
  - [WHO PAHO](#)
  - [WHO SEARO](#)
  - [WHO WPRO](#)
- [Research and Development](#)
- [Online courses on COVID-19](#) and in [additional national languages](#)
- [The Strategic Preparedness and Response Plan](#) (SPRP) outlining the support the international community can provide to all countries to prepare and respond to the virus
- [WHO Health Emergency dashboard](#)
- [Weekly COVID-19 Operations Updates](#)

---

## Recommendations and advice for the public

- [Protect yourself](#)
- [Questions and answers](#)
- [Travel advice](#)
- [EPI-WIN](#): tailored information for individuals, organizations and communities

---

## Case definitions

WHO periodically updates the [Global Surveillance for human infection with coronavirus disease \(COVID-19\)](#) document which includes surveillance definitions.

### Definition of COVID-19 death

COVID-19 death is defined for surveillance purposes as a death resulting from a clinically compatible illness in a probable or confirmed COVID-19 case, unless there is a clear alternative cause of death that cannot be related to COVID-19 disease (e.g. trauma). There should be no period of complete recovery between the illness and death.

Further guidance for certification and classification (coding) of COVID-19 as cause of death is available [here](#).

---

## Annex 1: Data, table and figure notes

Caution must be taken when interpreting all data presented. Differences are to be expected between information products published by WHO, national public health authorities, and other sources using different inclusion criteria and different data cut-off times. While steps are taken to ensure accuracy and reliability, all data are subject to continuous verification and change. Case detection, definitions, testing strategies, reporting practice, and lag times differ between countries/territories/areas. These factors, amongst others, influence the counts presented, with variable underestimation of true case and death counts, and variable delays to reflecting these data at global level.

The designations employed, and the presentation of these materials do not imply the expression of any opinion whatsoever on the part of WHO concerning the legal status of any country, territory or area or of its authorities, or concerning the delimitation of its frontiers or boundaries. Dotted and dashed lines on maps represent approximate border lines for which there may not yet be full agreement. Countries, territories and areas are arranged under the administering WHO region.

[1] All references to Kosovo should be understood to be in the context of the United Nations Security Council resolution 1244 (1999). In the map, number of cases of Serbia and Kosovo (UNSCR 1244, 1999) have been aggregated for visualization purposes.

Counts reflect laboratory-confirmed cases and deaths, based on [WHO case definitions](#), unless stated otherwise (see *Country, territory, or area-specific updates and errata*), and include both domestic and repatriated cases.

Other\*: includes cases reported from an international conveyance (Diamond Princess).

Due to the recent trend of countries conducting data reconciliation exercises which remove large numbers of cases or deaths from their total counts, WHO will now display such data as *negative* numbers in the “new cases” / “new deaths” columns as appropriate. This will aid readers in identifying when such adjustments occur. When additional details become available that allow the subtractions to be suitably apportioned to previous days, graphics will be updated accordingly. Prior situation reports will not be edited; see [covid19.who.int](https://covid19.who.int) for the most up-to-date data.

### Additional table notes

<sup>i</sup> Transmission classification is based on a process of country/territory/area self-reporting. Classifications are reviewed on a weekly basis, may be revised as new information becomes available, and are based on the highest category reported. Differing degrees of transmission may be present within countries/territories/areas. Categories:

- No cases: with no confirmed cases (not shown in table).
- Sporadic cases: with one or more cases, imported or locally detected.
- Clusters of cases: experiencing cases, clustered in time, geographic location and/or by common exposures.
- Community transmission: experiencing larger outbreaks of local transmission defined through an assessment of factors including, but not limited to: large numbers of cases not linkable to transmission chains; large numbers of cases from sentinel lab surveillance; and/or multiple unrelated clusters in several areas of the country/territory/area.
- Pending: transmission classification has not been reported to WHO.

<sup>ii</sup> “Territories” include territories, areas, overseas dependencies and other jurisdictions of similar status.

### Country, territory, or area-specific updates and errata

- Update 19 May 2020, Benin: A decrease of 210 cases has been reported due to pending PCR confirmation.
- Update 19 May 2020, São Tomé and Príncipe: A decrease of 4 cases has been reported to include

PCR confirmed cases only.

- Erratum 19 May 2020, United States of America, Kuwait, United Arab Emirates, Lebanon, Saudi Arabia, Qatar: Reported data were initially attributed to the incorrect date. Data are now attributed to the correct reporting date.