

# Coronavirus disease (COVID-19)

## Situation Report – 121

Data as received by WHO from national authorities by 10:00 CEST, 20 May 2020

### Highlights

WHO Regional Director for the Americas Dr Carissa F. Etienne highlighted that [addressing COVID-19 will require protecting vulnerable groups](#) including women, underprivileged populations, indigenous populations and migrants, by addressing health, social and economic inequalities.

WHO has published a new Case Report Form for “[Suspected cases of multisystem inflammatory syndrome \(MIS\) in children and adolescents temporally related to COVID-19](#)” intended for use by public health professionals for collecting standardized data on clinical presentations, severity and outcomes.

[Uganda commissioned the first Port Health COVID-19 laboratory at the main Uganda-Tanzania border](#) in light of potential COVID-19 importation by truck drivers. Two GeneXpert machines will be used to test all truck drivers arriving at the Mutukula point of entry, where results will become available within 45 minutes.

A doctor from Cairo, Egypt describes [how he became infected with and recovered from COVID-19](#) and highlights the need for health care workers to practise basic infection, prevention and control measures when interacting with patients.

Evidence from social science can help officials develop and implement policies in ways that are more likely to work because they are tailored to local needs. In the ‘[Subject in Focus](#)’ below, we look at how WHO is implementing the COVID-19 Research Roadmap agenda to translate evidence from the social sciences into action.

### Situation in numbers (by WHO Region)

Total (new cases in last 24 hours)

<b>Globally</b>	4 789 205 cases (77 375)	318 789 deaths (3 318)
<b>Africa</b>	65 956 cases (2 435)	1 846 deaths (50)
<b>Americas</b>	2 105 670 cases (36 009)	125 843 deaths (1 873)
<b>Eastern Mediterranean</b>	361 902 cases (11 497)	10 303 deaths (154)
<b>Europe</b>	1 928 799 cases (19 207)	169 033 deaths (1 035)
<b>South-East Asia</b>	156 211 cases (7 450)	4 971 deaths (191)
<b>Western Pacific</b>	169 955 cases (777)	6 780 deaths (15)

## Subject in Focus: Infodemics Management - Social science evidence in outbreak response

To tackle the health, social and economic challenges of COVID-19, decision-makers need data and research from many different disciplines. At the Global Research and Innovation meeting held in Geneva on 11-12 February 2020, over 400 scientists, Member State representatives, public health professionals, donors and private sector representatives came together to agree on priorities to accelerate research for the COVID-19 response. Social science was one of the nine research areas that featured on the meeting's agenda.

Social science is a broad disciplinary field that includes anthropology, psychology, behavioural science, political science, and social epidemiology. Evidence from social science can help officials develop and implement policies in ways that are more likely to work because they are tailored to local needs and to the realities of where and how people live, think and act, as individuals and as a group.

A technical working group of social scientists across the world's regions was convened to guide and support further development of the COVID-19 Research Roadmap agenda.<sup>1</sup> The aim of this group is to translate evidence from the social sciences into action that can inform response strategies by developing and sharing protocols, tools and technical expertise, for example on key considerations from social science on public use of face masks, immunity passports, homecare, routine immunization programmes, and vaccine implementation. The group achieves its objectives through collaboration and by coordinating action with other initiatives, including with the research arm of the Global Outbreak Alert and Response Network (GOARN).

The COVID-19 Research Roadmap highlighted the need for social science research in three priority areas:

First, research about the impacts of COVID-19 and the public health response, including secondary impacts, will help countries at different phases of the response to learn from others. This is key to informing and tailoring local and national responses. For example, research on how public health lock-down measures have affected mental health and household incomes can help officials plan how best to support communities once these measures are lifted. Under the COVID-19 Research Roadmap, a research group in China is studying the lessons learned following the public health measures taken in that country.

Second, research on health systems and models of care in different regions will enable adaptation and efficiencies specific to the COVID-19 health care response. Research in this area can help officials plan best approaches for managing patient flows and also provide the right support to those providing care in formal and informal community settings. A review of different models of homecare is currently underway to identify and share best methods for low resource settings. Working with infection prevention and control experts, a [research protocol guidance document and data collection tools](#) have also been developed to study the views of health workers on infection prevention and control procedures and on their well-being. Research groups in different regions are implementing this study and are meeting regularly to share experiences, results and learning.

Third, research on the flows of information, misinformation and disinformation, and on effective approaches for addressing stigma, will help science-based information and recommendations reach intended audiences. Data-driven insights can help officials tackle the infodemic and implement strategies to build trust. Across all these areas, there is an essential need to define and prioritize vulnerable populations so that evidence can inform policy development which accounts for and meets their needs.

---

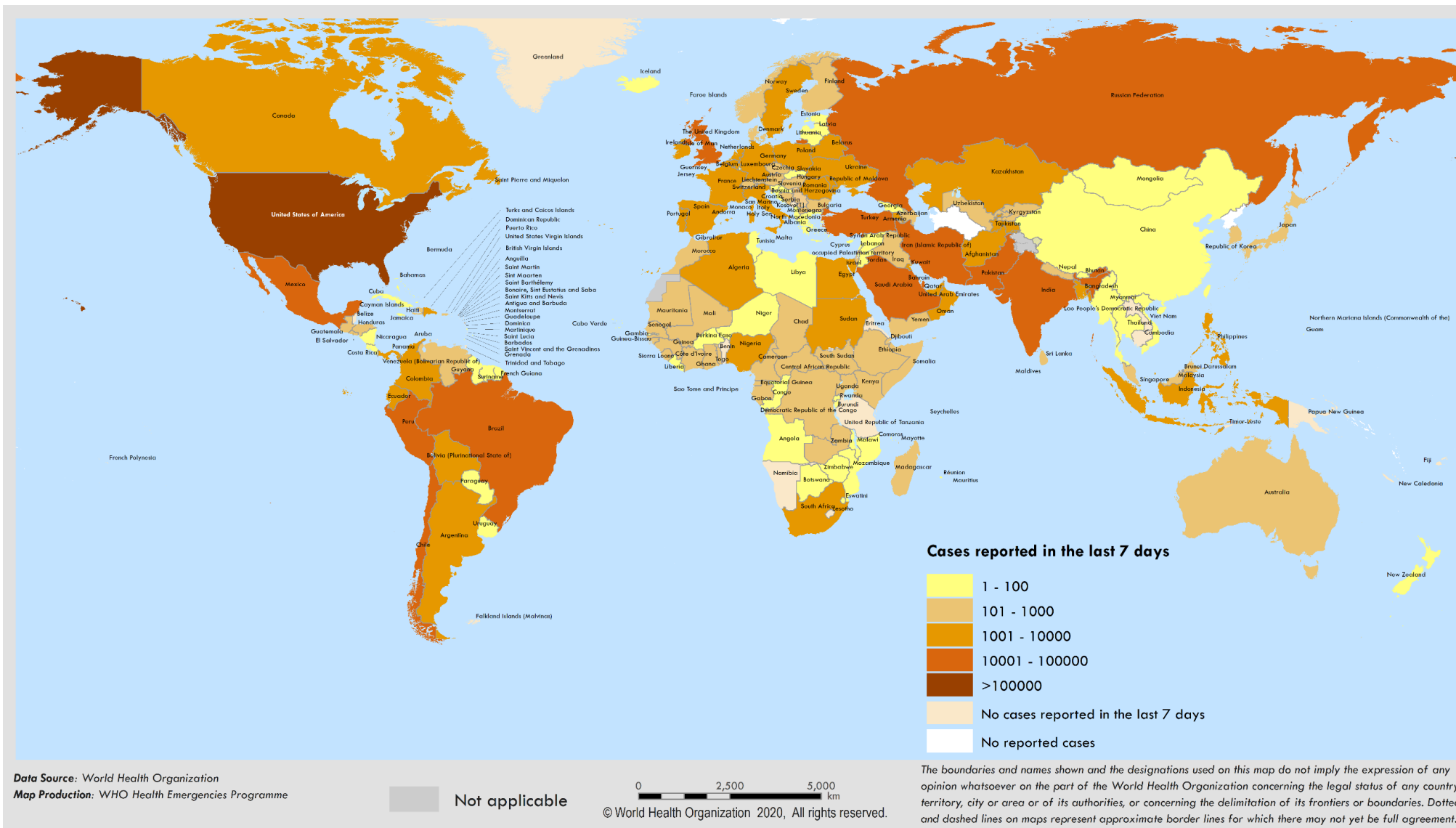
<sup>1</sup> Please see the Social Science Working group Terms of Reference [here](#)

The working group continues to collaborate with colleagues working on different technical areas and groups: immunization, ethics, gender, maternal and child health, sexual and reproductive health, to name a few; informing social science evidence in the work of WHO.

A toolbox on [good participatory practice for COVID-19 clinical trials](#) and on [working with Community Advisory Boards for COVID-19 related clinical studies](#) is also now available.

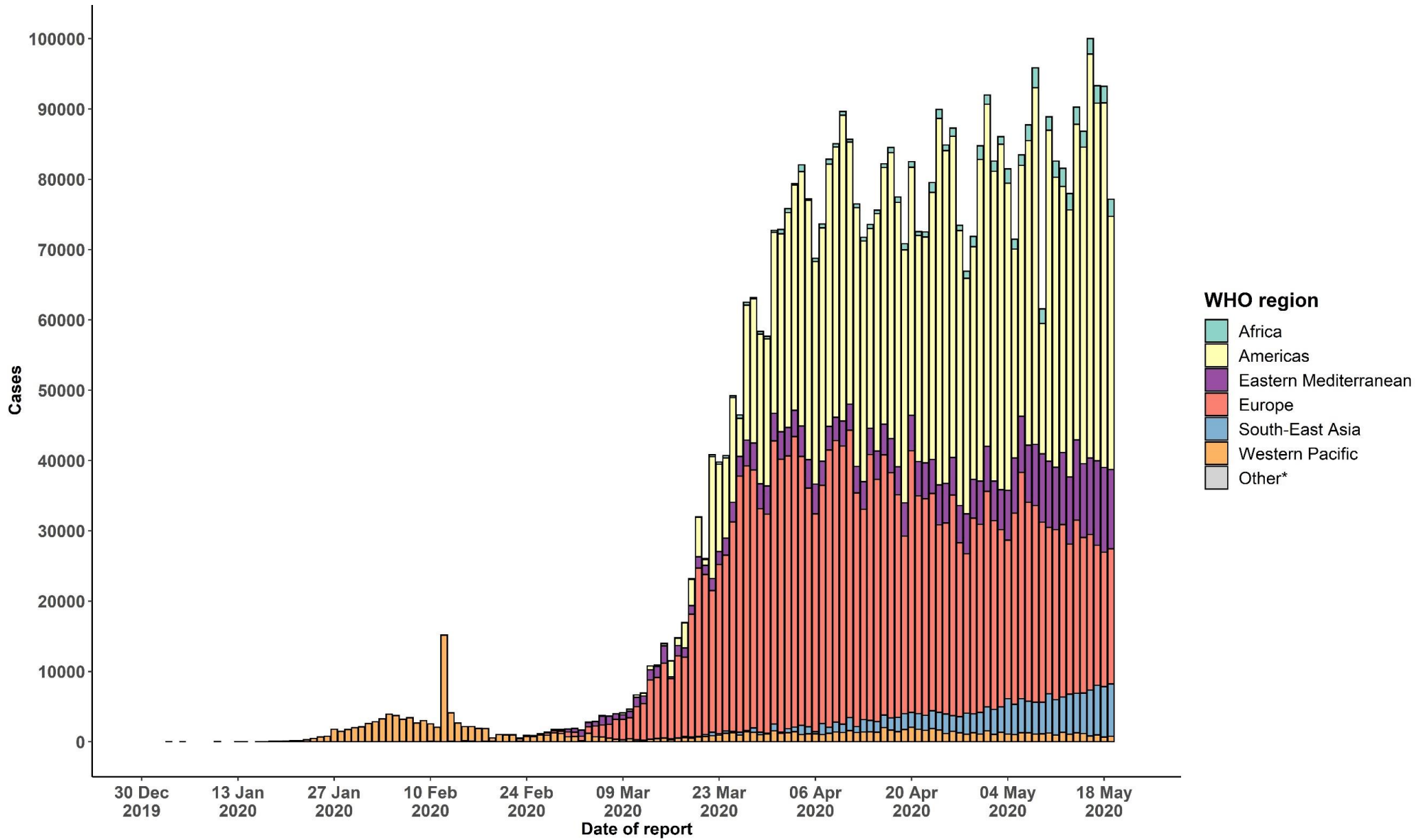
# Surveillance

Figure 1. Number of confirmed COVID-19 cases reported in the last seven days by country, territory or area, 14 May to 20 May\*\*



\*\*See [Annex 1](#) for data, table and figure notes.

Figure 2. Number of confirmed COVID-19 cases, by date of report and WHO region, 30 December 2019 through 20 May 2020\*\*



\*\*See [Annex 1](#) for data, table and figure notes.

**Table 1. Countries, territories or areas with reported laboratory-confirmed COVID-19 cases and deaths, by WHO region. Data as of 10 AM CEST, 20 May 2020\*\***

Reporting Country/Territory/Area	Total confirmed cases	Total confirmed new cases	Total deaths	Total new deaths	Transmission classification <sup>i</sup>	Days since last reported case
<b>Africa</b>						
South Africa	17 200	767	312	26	Community transmission	0
Algeria	7 377	176	561	6	Community transmission	0
Nigeria	6 401	226	192	1	Community transmission	0
Ghana	6 096	361	31	2	Community transmission	0
Cameroon	3 529	0	140	0	Community transmission	1
Guinea	2 863	67	18	2	Community transmission	0
Senegal	2 617	73	30	4	Community transmission	0
Côte d'Ivoire	2 153	34	28	0	Community transmission	0
Democratic Republic of the Congo	1 730	193	60	0	Community transmission	0
Gabon	1 502	70	12	1	Community transmission	0
Guinea-Bissau	1 038	0	6	0	Community transmission	1
Kenya	963	51	50	0	Community transmission	0
Niger	914	5	55	0	Community transmission	0
Mali	901	27	53	1	Community transmission	0
Equatorial Guinea	890	65	7	0	Community transmission	0
Burkina Faso	806	10	52	1	Community transmission	0
Zambia	772	11	7	0	Community transmission	0
Chad	545	26	56	2	Community transmission	0
Sierra Leone	534	15	33	0	Clusters of cases	0
United Republic of Tanzania	509	0	21	0	Community transmission	12

Reporting Country/Territory/Area	Total confirmed cases	Total confirmed new cases	Total deaths	Total new deaths	Transmission classification <sup>1</sup>	Days since last reported case
Congo	420	6	15	0	Community transmission	0
Central African Republic	411	75	0	0	Sporadic cases	0
Ethiopia	365	13	5	0	Clusters of cases	0
Togo	338	8	12	0	Community transmission	0
Cabo Verde	335	7	3	0	Clusters of cases	0
Mauritius	332	0	10	0	Clusters of cases	23
Madagascar	326	4	2	1	Clusters of cases	0
Rwanda	308	11	0	0	Sporadic cases	0
South Sudan	282	0	4	0	Clusters of cases	2
Uganda	260	0	0	0	Sporadic cases	1
Liberia	233	4	23	1	Community transmission	0
Eswatini	208	3	2	0	Clusters of cases	0
São Tomé and Príncipe	165	0	7	0	Clusters of cases	1
Mozambique	146	1	0	0	Clusters of cases	0
Mauritania	131	50	4	0	Sporadic cases	0
Benin	130	1	2	0	Community transmission	0
Malawi	71	1	3	0	Clusters of cases	0
Angola	52	2	3	1	Clusters of cases	0
Zimbabwe	46	0	4	0	Sporadic cases	1
Burundi	42	0	1	0	Clusters of cases	2
Eritrea	39	0	0	0	Sporadic cases	31
Comoros	34	23	1	0	Community transmission	0

Reporting Country/Territory/Area	Total confirmed cases	Total confirmed new cases	Total deaths	Total new deaths	Transmission classification <sup>i</sup>	Days since last reported case
Botswana	25	0	1	0	Clusters of cases	3
Gambia	24	0	1	0	Sporadic cases	2
Namibia	16	0	0	0	Sporadic cases	44
Seychelles	11	0	0	0	Clusters of cases	43
Lesotho	1	0	0	0	Pending	6
<b>Territories<sup>ii</sup></b>						
Mayotte	1 419	49	19	1	Clusters of cases	0
Réunion	446	0	0	0	Clusters of cases	1
<b>Americas</b>						
United States of America	1 477 459	13 227	89 271	697	Community transmission	0
Brazil	254 220	13 140	16 792	674	Community transmission	0
Peru	94 933	2 660	2 789	141	Community transmission	0
Canada	78 499	1 193	5 857	52	Community transmission	0
Mexico	51 633	2 414	5 332	155	Community transmission	0
Chile	46 059	0	478	0	Community transmission	1
Ecuador	34 151	969	2 839	103	Community transmission	0
Colombia	16 295	721	592	18	Community transmission	0
Dominican Republic	13 223	498	441	7	Community transmission	0
Panama	9 726	120	279	4	Community transmission	0
Argentina	8 371	303	382	9	Community transmission	0
Bolivia (Plurinational State of)	4 263	175	174	5	Clusters of cases	0
Honduras	2 798	152	146	4	Community transmission	0
Guatemala	2 001	89	38	3	Clusters of cases	0



Reporting Country/Territory/Area	Total confirmed cases	Total confirmed new cases	Total deaths	Total new deaths	Transmission classification <sup>i</sup>	Days since last reported case
Cuba	1 887	6	79	0	Clusters of cases	0
El Salvador	1 498	85	30	0	Clusters of cases	0
Costa Rica	882	19	10	0	Clusters of cases	0
Paraguay	829	41	11	0	Community transmission	0
Uruguay	737	3	20	0	Clusters of cases	0
Venezuela (Bolivarian Republic of)	618	0	10	0	Clusters of cases	1
Haiti	533	77	21	1	Clusters of cases	0
Jamaica	520	0	9	0	Clusters of cases	1
Guyana	124	7	10	0	Clusters of cases	0
Trinidad and Tobago	116	0	8	0	Sporadic cases	22
Bahamas	96	0	11	0	Clusters of cases	4
Barbados	88	0	7	0	Clusters of cases	1
Antigua and Barbuda	25	0	3	0	Clusters of cases	16
Nicaragua	25	0	8	0	Clusters of cases	6
Grenada	22	0	0	0	Clusters of cases	4
Belize	18	0	2	0	Sporadic cases	35
Saint Lucia	18	0	0	0	Sporadic cases	15
Saint Vincent and the Grenadines	17	0	0	0	Sporadic cases	15
Dominica	16	0	0	0	Clusters of cases	39
Saint Kitts and Nevis	15	0	0	0	Sporadic cases	29
Suriname	11	0	1	0	Sporadic cases	1
<b>Territories<sup>ii</sup></b>						
Puerto Rico	2 805	95	124	0	Clusters of cases	0

Reporting Country/Territory/Area	Total confirmed cases	Total confirmed new cases	Total deaths	Total new deaths	Transmission classification <sup>1</sup>	Days since last reported case
French Guiana	210	13	1	0	Clusters of cases	0
Martinique	192	0	14	0	Clusters of cases	3
Guadeloupe	155	0	13	0	Clusters of cases	7
Bermuda	125	2	9	0	Clusters of cases	0
Aruba	101	0	3	0	Sporadic cases	14
Cayman Islands	94	0	1	0	Clusters of cases	3
Sint Maarten	78	0	15	0	Sporadic cases	6
United States Virgin Islands	69	0	6	0	Clusters of cases	9
Saint Martin	39	0	3	0	Sporadic cases	9
Curaçao	16	0	1	0	Sporadic cases	22
Falkland Islands (Malvinas)	13	0	0	0	Clusters of cases	24
Turks and Caicos Islands	12	0	1	0	Sporadic cases	22
Montserrat	11	0	1	0	Sporadic cases	36
British Virgin Islands	8	0	1	0	Sporadic cases	4
Bonaire, Sint Eustatius and Saba	6	0	0	0	Sporadic cases	22
Saint Barthélemy	6	0	0	0	Sporadic cases	50
Anguilla	3	0	0	0	Sporadic cases	46
Saint Pierre and Miquelon	1	0	0	0	Sporadic cases	42
<b>Eastern Mediterranean</b>						
Iran (Islamic Republic of)	124 603	2 111	7 119	62	Community transmission	0
Saudi Arabia	59 854	2 509	329	0	Clusters of cases	0
Pakistan	45 184	1 218	985	46	Clusters of cases	0
Qatar	35 606	1 637	15	0	Community transmission	0

Reporting Country/Territory/Area	Total confirmed cases	Total confirmed new cases	Total deaths	Total new deaths	Transmission classification <sup>i</sup>	Days since last reported case
United Arab Emirates	25 063	892	227	0	Pending	0
Kuwait	16 764	1 073	121	0	Clusters of cases	0
Egypt	13 484	720	659	14	Clusters of cases	0
Afghanistan	8 145	490	187	10	Clusters of cases	0
Bahrain	7 532	348	12	0	Clusters of cases	0
Morocco	7 023	71	193	0	Clusters of cases	0
Oman	5 671	0	27	1	Clusters of cases	1
Iraq	3 611	57	131	4	Clusters of cases	0
Sudan	2 728	137	111	6	Community transmission	0
Djibouti	1 618	100	7	0	Clusters of cases	0
Somalia	1 502	47	59	2	Sporadic cases	0
Tunisia	1 044	1	47	1	Community transmission	0
Lebanon	954	23	26	0	Clusters of cases	0
Jordan	649	20	9	0	Clusters of cases	0
Yemen	171	37	29	8	Pending	0
Libya	68	3	3	0	Clusters of cases	0
Syrian Arab Republic	58	0	3	0	Community transmission	2
<b>Territories<sup>ii</sup></b>						
occupied Palestinian territory	570	3	4	0	Clusters of cases	0
<b>Europe</b>						
Russian Federation	308 705	8 764	2 972	135	Clusters of cases	0
The United Kingdom	248 822	2 412	35 341	545	Community transmission	0
Spain	232 037	431	27 778	69	Community transmission	0

Reporting Country/Territory/Area	Total confirmed cases	Total confirmed new cases	Total deaths	Total new deaths	Transmission classification <sup>1</sup>	Days since last reported case
Italy	226 699	813	32 169	162	Community transmission	0
Germany	176 007	797	8 090	83	Community transmission	0
Turkey	151 615	1 022	4 199	28	Community transmission	0
France	140 959	462	27 972	-218	Community transmission	0
Belgium	55 791	232	9 108	28	Community transmission	0
Netherlands	44 249	108	5 715	21	Community transmission	0
Belarus	31 508	936	175	4	Community transmission	0
Sweden	30 799	422	3 743	45	Community transmission	0
Switzerland	30 535	21	1 613	11	Community transmission	0
Portugal	29 432	223	1 247	16	Community transmission	0
Ireland	24 251	51	1 561	14	Community transmission	0
Poland	19 268	383	948	12	Community transmission	0
Ukraine	19 230	354	564	16	Community transmission	0
Romania	17 191	155	1 126	19	Community transmission	0
Israel	16 650	29	277	5	Pending	0
Austria	16 257	78	632	3	Community transmission	0
Denmark	11 044	76	551	3	Community transmission	0
Serbia	10 733	34	234	3	Pending	0
Czechia	8 647	61	302	5	Community transmission	0
Norway	8 257	8	233	0	Clusters of cases	0
Kazakhstan	6 969	218	35	0	Pending	0
Finland	6 399	19	301	1	Pending	0
Republic of Moldova	6 340	202	224	5	Pending	0

Reporting Country/Territory/Area	Total confirmed cases	Total confirmed new cases	Total deaths	Total new deaths	Transmission classification <sup>1</sup>	Days since last reported case
Armenia	5 271	230	67	3	Clusters of cases	0
Luxembourg	3 958	11	109	2	Pending	0
Hungary	3 598	42	470	3	Community transmission	0
Azerbaijan	3 518	131	41	1	Clusters of cases	0
Uzbekistan	2 880	78	13	0	Clusters of cases	0
Greece	2 840	4	165	0	Clusters of cases	0
Bosnia and Herzegovina	2 319	16	133	1	Community transmission	0
Bulgaria	2 292	33	116	4	Clusters of cases	0
Croatia	2 232	4	96	1	Community transmission	0
Tajikistan	1 936	207	44	0	Pending	0
North Macedonia	1 839	22	106	2	Clusters of cases	0
Iceland	1 802	0	10	0	Community transmission	6
Estonia	1 791	7	64	0	Pending	0
Lithuania	1 562	15	60	1	Community transmission	0
Slovakia	1 495	0	28	0	Clusters of cases	1
Slovenia	1 467	1	104	0	Clusters of cases	0
Kyrgyzstan	1 270	27	14	0	Clusters of cases	0
Latvia	1 012	3	21	2	Clusters of cases	0
Albania	964	16	31	0	Clusters of cases	0
Cyprus	918	1	17	0	Clusters of cases	0
Andorra	761	0	51	0	Community transmission	6
Georgia	713	11	12	0	Community transmission	0
San Marino	668	0	41	0	Community transmission	2

Reporting Country/Territory/Area	Total confirmed cases	Total confirmed new cases	Total deaths	Total new deaths	Transmission classification <sup>i</sup>	Days since last reported case
Malta	560	2	6	0	Sporadic cases	0
Montenegro	324	0	9	0	Clusters of cases	14
Monaco	96	0	1	0	Sporadic cases	9
Liechtenstein	83	0	1	0	Pending	24
Holy See	12	0	0	0	Sporadic cases	13
<b>Territories<sup>ii</sup></b>						
Kosovo <sup>[1]</sup>	989	34	29	0	Community transmission	0
Isle of Man	335	0	24	0	Pending	2
Jersey	303	1	27	0	Community transmission	0
Guernsey	252	0	13	0	Community transmission	17
Faroe Islands	187	0	0	0	Pending	26
Gibraltar	147	0	0	0	Clusters of cases	7
Greenland	11	0	0	0	Pending	44
<b>South-East Asia</b>						
India	106 750	5 611	3 303	140	Clusters of cases	0
Bangladesh	25 121	1 251	370	21	Clusters of cases	0
Indonesia	18 496	486	1 221	30	Community transmission	0
Thailand	3 034	1	56	0	Clusters of cases	0
Maldives	1 143	37	4	0	Clusters of cases	0
Sri Lanka	1 027	35	9	0	Clusters of cases	0
Nepal	402	27	2	0	Sporadic cases	0
Myanmar	193	2	6	0	Clusters of cases	0

Reporting Country/Territory/Area	Total confirmed cases	Total confirmed new cases	Total deaths	Total new deaths	Transmission classification <sup>i</sup>	Days since last reported case
Timor-Leste	24	0	0	0	Clusters of cases	26
Bhutan	21	0	0	0	Sporadic cases	4
<b>Western Pacific</b>						
China	84 505	5	4 645	0	Clusters of cases	0
Singapore	28 794	451	22	0	Clusters of cases	0
Japan	16 385	20	771	8	Clusters of cases	0
Philippines	12 942	224	837	6	Community transmission	0
Republic of Korea	11 110	32	263	0	Clusters of cases	0
Australia	7 068	8	99	0	Clusters of cases	0
Malaysia	6 978	37	114	1	Clusters of cases	0
New Zealand	1 153	0	21	0	Clusters of cases	1
Viet Nam	324	0	0	0	Clusters of cases	1
Brunei Darussalam	141	0	1	0	Clusters of cases	12
Mongolia	140	0	0	0	Sporadic cases	1
Cambodia	122	0	0	0	Sporadic cases	38
Lao People's Democratic Republic	19	0	0	0	Sporadic cases	37
Fiji	18	0	0	0	Sporadic cases	29
Papua New Guinea	8	0	0	0	Sporadic cases	27
<b>Territories<sup>ii</sup></b>						
Guam	149	0	5	0	Clusters of cases	5
French Polynesia	60	0	0	0	Sporadic cases	14

Reporting Country/Territory/Area	Total confirmed cases	Total confirmed new cases	Total deaths	Total new deaths	Transmission classification <sup>i</sup>	Days since last reported case
Northern Mariana Islands (Commonwealth of the)	21	0	2	0	Pending	3
New Caledonia	18	0	0	0	Sporadic cases	47
<b>Subtotal for all regions</b>	<b>4 788 493</b>	<b>77 375</b>	<b>318 776</b>	<b>3 318</b>		
Other*	712	0	13	0	-	65
<b>Grand total</b>	<b>4 789 205</b>	<b>77 375</b>	<b>318 789</b>	<b>3 318</b>		

\*\*See [Annex 1](#) for data, table and figure notes.



---

## Technical guidance and other resources

- To view all technical guidance documents regarding COVID-19, please go to [this webpage](#).
- Updates from WHO regional offices
  - [WHO AFRO](#)
  - [WHO PAHO](#)
  - [WHO EMRO](#)
  - [WHO SEARO](#)
  - [WHO EURO](#)
  - [WHO WPRO](#)
- [Research and Development](#)
- [Online courses on COVID-19](#) and in [additional national languages](#)
- [The Strategic Preparedness and Response Plan](#) (SPRP) outlining the support the international community can provide to all countries to prepare and respond to the virus
- [WHO Health Emergency dashboard](#)
- [Weekly COVID-19 Operations Updates](#)

---

## Recommendations and advice for the public

- [Protect yourself](#)
- [Questions and answers](#)
- [Travel advice](#)
- [EPI-WIN](#): tailored information for individuals, organizations and communities

---

## Case definitions

WHO periodically updates the [Global Surveillance for human infection with coronavirus disease \(COVID-19\)](#) document which includes surveillance definitions.

### Definition of COVID-19 death

COVID-19 death is defined for surveillance purposes as a death resulting from a clinically compatible illness in a probable or confirmed COVID-19 case, unless there is a clear alternative cause of death that cannot be related to COVID-19 disease (e.g. trauma). There should be no period of complete recovery between the illness and death.

Further guidance for certification and classification (coding) of COVID-19 as cause of death is available [here](#).

---

## Annex 1: Data, table and figure notes

Caution must be taken when interpreting all data presented. Differences are to be expected between information products published by WHO, national public health authorities, and other sources using different inclusion criteria and different data cut-off times. While steps are taken to ensure accuracy and reliability, all data are subject to continuous verification and change. Case detection, definitions, testing strategies, reporting practice, and lag times differ between countries/territories/areas. These factors, amongst others, influence the counts presented, with variable underestimation of true case and death counts, and variable delays to reflecting these data at global level.

The designations employed, and the presentation of these materials do not imply the expression of any opinion whatsoever on the part of WHO concerning the legal status of any country, territory or area or of its authorities, or concerning the delimitation of its frontiers or boundaries. Dotted and dashed lines on maps represent approximate border lines for which there may not yet be full agreement. Countries, territories and areas are arranged under the administering WHO region.

The mention of specific companies or of certain manufacturers' products does not imply that they are endorsed or recommended by WHO in preference to others of a similar nature that are not mentioned. Errors and omissions excepted, the names of proprietary products are distinguished by initial capital letters.

[1] All references to Kosovo should be understood to be in the context of the United Nations Security Council resolution 1244 (1999). In the map, number of cases of Serbia and Kosovo (UNSCR 1244, 1999) have been aggregated for visualization purposes.

Counts reflect laboratory-confirmed cases and deaths, based on [WHO case definitions](#), unless stated otherwise (see *Country, territory, or area-specific updates and errata*), and include both domestic and repatriated cases.

Other\*: includes cases reported from an international conveyance (Diamond Princess).

Due to the recent trend of countries conducting data reconciliation exercises which remove large numbers of cases or deaths from their total counts, WHO will now display such data as *negative* numbers in the "new cases" / "new deaths" columns as appropriate. This will aid readers in identifying when such adjustments occur. When additional details become available that allow the subtractions to be suitably apportioned to previous days, graphics will be updated accordingly. Prior situation reports will not be edited; see [covid19.who.int](https://covid19.who.int) for the most up-to-date data.

### Additional table notes

<sup>i</sup> Transmission classification is based on a process of country/territory/area self-reporting. Classifications are reviewed on a weekly basis, may be revised as new information becomes available, and are based on the highest category reported. Differing degrees of transmission may be present within countries/territories/areas. Categories:

- No cases: with no confirmed cases (not shown in table).
- Sporadic cases: with one or more cases, imported or locally detected.
- Clusters of cases: experiencing cases, clustered in time, geographic location and/or by common exposures.
- Community transmission: experiencing larger outbreaks of local transmission defined through an assessment of factors including, but not limited to: large numbers of cases not linkable to transmission chains; large numbers of cases from sentinel lab surveillance; and/or multiple unrelated clusters in several areas of the country/territory/area.
- Pending: transmission classification has not been reported to WHO.

<sup>ii</sup> "Territories" include territories, areas, overseas dependencies and other jurisdictions of similar status.

### **Country, territory, or area-specific updates and errata**

- Update 20 May 2020, United States of America: Counts adjusted retrospectively by national authorities due to data reclassification: 57 cases and one death were excluded.
- Update 20 May 2020, France: Counts adjusted retrospectively by national authorities due to data reclassification: 218 deaths were excluded.
- Erratum 20 May 2020, United States of America, Kuwait, United Arab Emirates, Lebanon, Saudi Arabia, Qatar: Reported data were initially attributed to the incorrect date. Data are now attributed to the correct reporting date.