

Coronavirus disease (COVID-19)

Situation Report – 126

Data as received by WHO from national authorities by 10:00 CEST, 25 May 2020

Highlights

The WHO Regional Office for Africa has [provided training for Tanzanian health workers to equip them with skills for caring for critically ill COVID-19 patients](#). A total of 160 health workers in Tanzania attended a three-day virtual training session organized by the Ministry of Health and the World Health Organization.

[The United Kingdom will contribute \\$3.8m for the COVID-19 response in the Caribbean.](#) The financial contribution to the WHO Regional Office for the Americas will help Antigua and Barbuda, Belize, Dominica, Grenada, Guyana, Jamaica, Saint Lucia, and Saint Vincent and the Grenadines contain the spread of the disease and mitigate its impact.

WHO has partnered with Vital Strategies and other global partners to launch a new technical package: [Revealing the Toll of COVID-19: A Technical Package for Rapid Mortality Surveillance and Epidemic Response](#). This is a technical package for rapid mortality surveillance and epidemic response to support national governments with surveillance and response planning surrounding COVID-19.

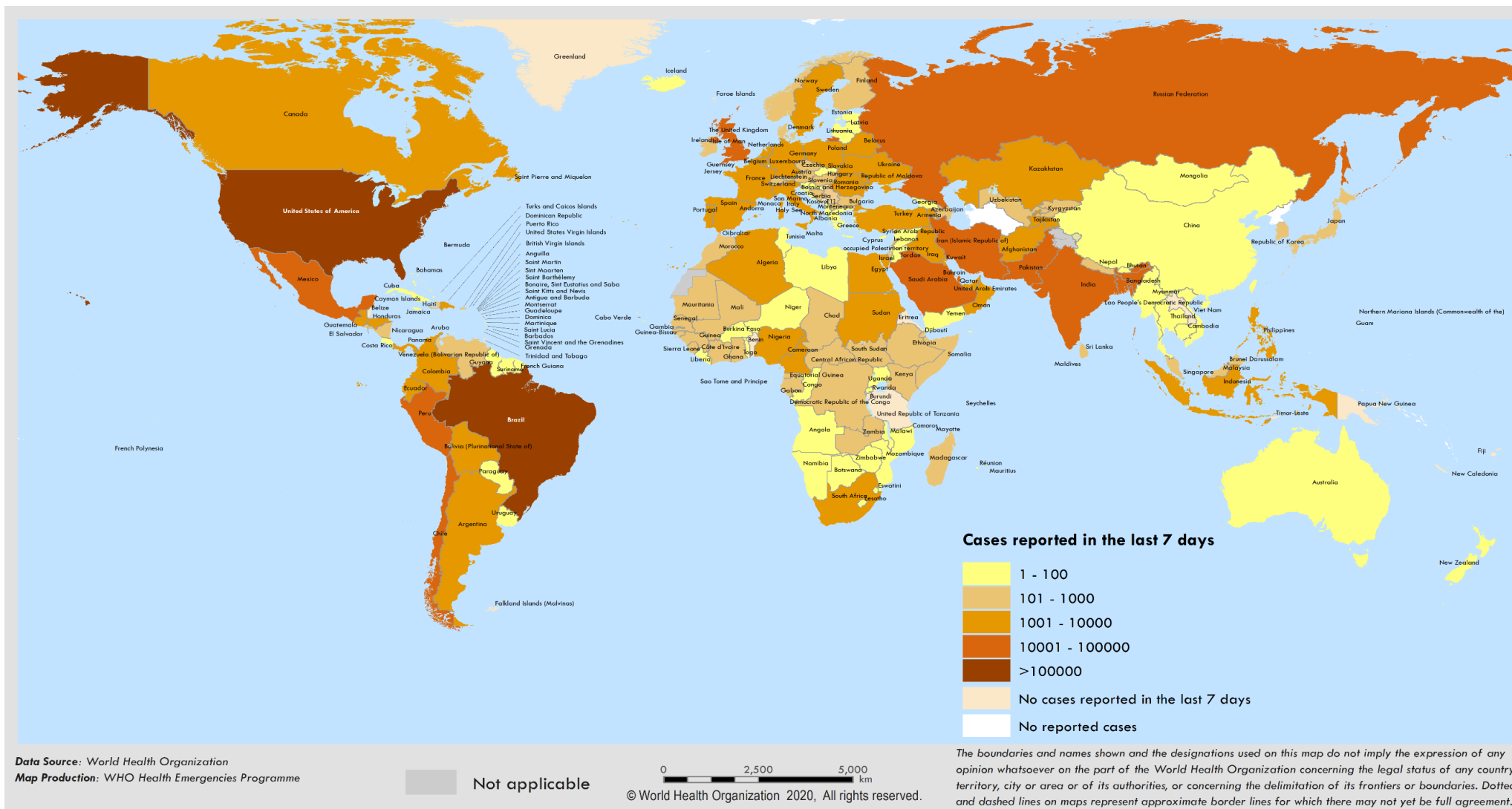
Situation in numbers (by WHO Region)

Total (new cases in last 24 hours)

Globally	5 304 772 cases (100 264)	342 029 deaths (4 342)
Africa	80 002 cases (2 707)	2 120 deaths (47)
Americas	2 395 295 cases (57 171)	141 472 deaths (3 356)
Eastern Mediterranean	427 832 cases (12 026)	11 164 deaths (176)
Europe	2 025 176 cases (18 192)	174 429 deaths (543)
South-East Asia	201 207 cases (9 241)	5 952 deaths (204)
Western Pacific	174 548 cases (927)	6 879 deaths (16)

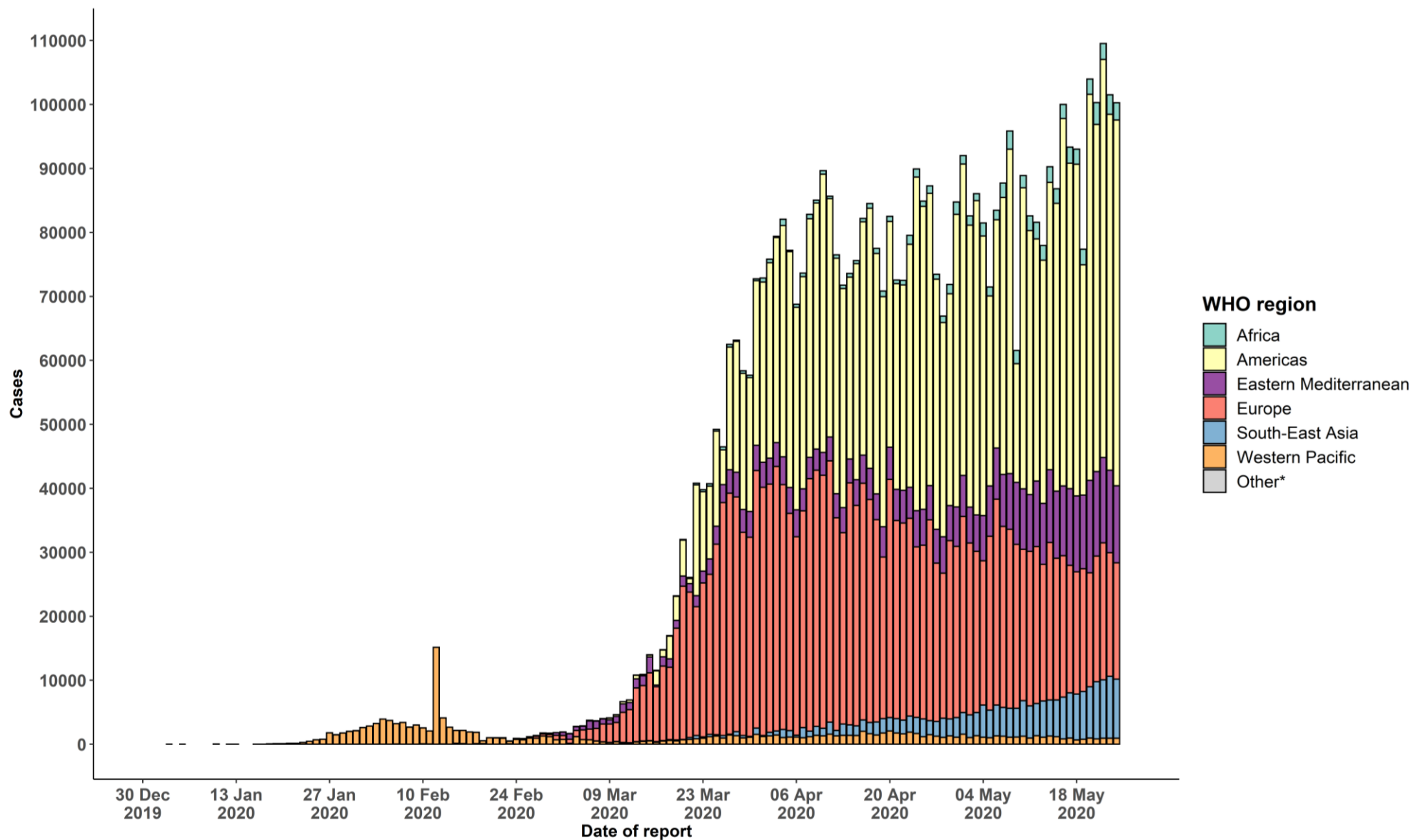
Surveillance

Figure 1. Number of confirmed COVID-19 cases reported in the last seven days by country, territory or area, 19 May to 25 May**



**See Annex 1 for data, table and figure notes.

Figure 2. Number of confirmed COVID-19 cases, by date of report and WHO region, 30 December 2019 through 25 May 2020**



**See [Annex 1](#) for data, table and figure notes.

Table 1. Countries, territories or areas with reported laboratory-confirmed COVID-19 cases and deaths, by WHO region. Data as of 10 AM CEST, 25 May 2020**

Reporting Country/ Territory/Area	Total confirmed cases	Total confirmed new cases	Total deaths	Total new deaths	Transmission classification ⁱ	Days since last reported case
Africa						
South Africa	22 583	1 240	429	22	Community transmission	0
Algeria	8 306	193	600	8	Community transmission	0
Nigeria	7 839	313	226	5	Community transmission	0
Ghana	6 683	66	32	1	Community transmission	0
Cameroon	4 400	0	159	0	Community transmission	2
Guinea	3 275	99	20	0	Community transmission	0
Senegal	3 047	71	35	1	Community transmission	0
Côte d'Ivoire	2 376	10	30	0	Community transmission	0
Democratic Republic of the Congo	2 140	0	62	0	Community transmission	1
Gabon	1 934	0	12	0	Community transmission	1
Kenya	1 214	22	51	1	Community transmission	0
Guinea-Bissau	1 173	59	6	0	Community transmission	0
Equatorial Guinea	1 043	0	12	0	Community transmission	1
Mali	1 030	15	65	3	Community transmission	0
Niger	945	2	61	0	Community transmission	0
Zambia	920	0	7	0	Community transmission	2
Burkina Faso	832	1	52	0	Community transmission	0
Sierra Leone	721	100	40	1	Community transmission	0
Chad	675	27	60	0	Community transmission	0
South Sudan	655	92	8	2	Clusters of cases	0

Reporting Country/ Territory/Area	Total confirmed cases	Total confirmed new cases	Total deaths	Total new deaths	Transmission classification ¹	Days since last reported case
Central African Republic	604	52	1	0	Clusters of cases	0
Ethiopia	582	88	5	0	Clusters of cases	0
Madagascar	527	39	2	0	Clusters of cases	0
United Republic of Tanzania	509	0	21	0	Community transmission	17
Congo	487	0	16	0	Community transmission	1
Togo	381	8	12	0	Community transmission	0
Cabo Verde	380	9	3	0	Clusters of cases	0
Mauritius	334	2	10	0	Clusters of cases	0
Rwanda	327	2	0	0	Sporadic cases	0
Uganda	304	-8	0	0	Sporadic cases	0
Liberia	265	10	26	0	Community transmission	0
Eswatini	250	12	2	0	Clusters of cases	0
Mauritania	237	10	6	0	Clusters of cases	0
Mozambique	194	26	0	0	Clusters of cases	0
Benin	191	56	3	0	Community transmission	0
São Tomé and Príncipe	174	0	9	1	Clusters of cases	1
Malawi	83	0	4	0	Clusters of cases	1
Angola	69	9	4	1	Clusters of cases	0
Zimbabwe	56	0	4	0	Sporadic cases	1
Comoros	43	9	1	0	Community transmission	0
Burundi	42	0	1	0	Clusters of cases	7
Eritrea	39	0	0	0	Sporadic cases	36

Reporting Country/ Territory/Area	Total confirmed cases	Total confirmed new cases	Total deaths	Total new deaths	Transmission classification ⁱ	Days since last reported case
Botswana	35	6	1	0	Clusters of cases	0
Gambia	25	0	1	0	Sporadic cases	2
Namibia	21	1	0	0	Sporadic cases	0
Seychelles	11	0	0	0	Clusters of cases	48
Lesotho	2	0	0	0	Sporadic cases	2
Territoriesⁱⁱ						
Mayotte	1 587	66	20	1	Clusters of cases	0
Réunion	452	0	1	0	Clusters of cases	1
Americas						
United States of America	1 592 599	24 151	95 863	1 852	Community transmission	0
Brazil	347 398	16 508	22 013	965	Community transmission	0
Peru	115 754	4 056	3 373	129	Community transmission	0
Canada	84 081	1 189	6 380	103	Community transmission	0
Chile	69 102	3 709	718	45	Community transmission	0
Mexico	65 856	3 329	7 179	190	Community transmission	0
Ecuador	36 756	498	3 108	12	Community transmission	0
Colombia	20 177	1 046	705	23	Community transmission	0
Dominican Republic	14 801	379	458	0	Community transmission	0
Argentina	11 353	704	445	6	Community transmission	0
Panama	10 577	310	299	4	Community transmission	0
Bolivia (Plurinational State of)	5 915	336	240	10	Community transmission	0
Honduras	3 743	266	174	7	Community transmission	0
Guatemala	3 054	311	57	4	Community transmission	0

Reporting Country/ Territory/Area	Total confirmed cases	Total confirmed new cases	Total deaths	Total new deaths	Transmission classification ⁱ	Days since last reported case
Cuba	1 941	10	82	1	Clusters of cases	0
El Salvador	1 915	96	35	2	Community transmission	0
Venezuela (Bolivarian Republic of)	1 010	66	10	0	Community transmission	0
Costa Rica	918	7	10	0	Clusters of cases	0
Haiti	865	53	26	1	Community transmission	0
Paraguay	862	12	11	0	Community transmission	0
Uruguay	764	11	22	2	Clusters of cases	0
Jamaica	550	6	9	0	Clusters of cases	0
Nicaragua	279	0	17	0	Community transmission	4
Guyana	127	0	10	0	Clusters of cases	2
Trinidad and Tobago	116	0	8	0	Sporadic cases	27
Bahamas	100	3	11	0	Clusters of cases	0
Barbados	92	2	7	0	Clusters of cases	0
Antigua and Barbuda	25	0	3	0	Clusters of cases	21
Grenada	22	0	0	0	Clusters of cases	9
Belize	18	0	2	0	Sporadic cases	40
Saint Lucia	18	0	0	0	Sporadic cases	20
Saint Vincent and the Grenadines	18	0	0	0	Sporadic cases	4
Dominica	16	0	0	0	Clusters of cases	44
Saint Kitts and Nevis	15	0	0	0	Sporadic cases	34
Suriname	11	0	1	0	Sporadic cases	6
Territoriesⁱⁱ						
Puerto Rico	3 189	89	127	0	Community transmission	0

Reporting Country/ Territory/Area	Total confirmed cases	Total confirmed new cases	Total deaths	Total new deaths	Transmission classification ¹	Days since last reported case
French Guiana	279	18	1	0	Clusters of cases	0
Martinique	197	0	14	0	Clusters of cases	2
Guadeloupe	156	0	13	0	Clusters of cases	1
Bermuda	133	5	9	0	Clusters of cases	0
Cayman Islands	129	0	1	0	Clusters of cases	1
Aruba	101	0	3	0	Sporadic cases	19
Sint Maarten	78	0	15	0	Sporadic cases	11
United States Virgin Islands	69	0	6	0	Clusters of cases	14
Saint Martin	39	0	3	0	Sporadic cases	14
Curaçao	17	1	1	0	Sporadic cases	0
Falkland Islands (Malvinas)	13	0	0	0	Clusters of cases	29
Turks and Caicos Islands	12	0	1	0	Sporadic cases	27
Montserrat	11	0	1	0	Sporadic cases	41
British Virgin Islands	8	0	1	0	Sporadic cases	9
Bonaire, Sint Eustatius and Saba	6	0	0	0	No cases	27
Saint Barthélemy	6	0	0	0	Sporadic cases	55
Anguilla	3	0	0	0	Sporadic cases	51
Saint Pierre and Miquelon	1	0	0	0	Sporadic cases	47
Eastern Mediterranean						
Iran (Islamic Republic of)	135 701	2 180	7 417	58	Community transmission	0
Saudi Arabia	72 560	2 399	390	11	Clusters of cases	0
Pakistan	56 349	1 748	1 167	34	Clusters of cases	0
Qatar	43 714	1 501	23	2	Community transmission	0

Reporting Country/ Territory/Area	Total confirmed cases	Total confirmed new cases	Total deaths	Total new deaths	Transmission classification ⁱ	Days since last reported case
United Arab Emirates	29 485	781	245	1	Pending	0
Kuwait	21 302	838	156	8	Clusters of cases	0
Egypt	17 265	752	764	29	Clusters of cases	0
Afghanistan	11 094	512	219	1	Clusters of cases	0
Bahrain	9 138	336	13	0	Clusters of cases	0
Oman	7 770	513	37	1	Clusters of cases	0
Morocco	7 433	27	199	1	Clusters of cases	0
Iraq	4 469	197	160	8	Clusters of cases	0
Sudan	3 826	192	165	19	Community transmission	0
Djibouti	2 270	0	10	0	Clusters of cases	2
Somalia	1 594	0	61	0	Sporadic cases	3
Lebanon	1 114	17	26	0	Clusters of cases	0
Tunisia	1 051	3	48	0	Community transmission	0
Jordan	708	4	9	0	Clusters of cases	0
Yemen	226	10	43	3	Pending	0
Syrian Arab Republic	86	16	4	0	Community transmission	0
Libya	75	0	3	0	Clusters of cases	1
Territoriesⁱⁱ						
occupied Palestinian territory	602	0	5	0	Clusters of cases	2
Europe						
Russian Federation	353 427	8 946	3 633	92	Clusters of cases	0
The United Kingdom	259 563	2 405	36 793	118	Community transmission	0
Spain	235 772	482	28 752	74	Community transmission	0

Reporting Country/ Territory/Area	Total confirmed cases	Total confirmed new cases	Total deaths	Total new deaths	Transmission classification ⁱ	Days since last reported case
Italy	229 858	531	32 785	50	Community transmission	0
Germany	178 570	289	8 257	10	Community transmission	0
Turkey	156 827	1141	4340	32	Community transmission	0
France	142 204	31	28 315	34	Community transmission	0
Belgium	57 092	282	9 280	43	Community transmission	0
Netherlands	45 236	172	5 822	11	Community transmission	0
Belarus	36 198	954	199	5	Community transmission	0
Sweden	33 459	271	3 998	6	Community transmission	0
Switzerland	30 653	11	1 640	0	Community transmission	0
Portugal	30 623	152	1 316	14	Community transmission	0
Ireland	24 639	57	1 608	4	Community transmission	0
Poland	21 326	395	996	3	Community transmission	0
Ukraine	21 245	259	623	6	Community transmission	0
Romania	18 070	213	1 179	9	Community transmission	0
Israel	16 712	0	279	0	Pending	1
Austria	16 439	32	640	1	Community transmission	0
Denmark	11 360	71	562	1	Community transmission	0
Serbia	11 159	67	238	0	Pending	0
Czechia	8 957	67	315	1	Clusters of cases	0
Kazakhstan	8 531	209	35	0	Pending	0
Norway	8 309	0	235	0	Clusters of cases	2
Armenia	7 113	452	87	6	Clusters of cases	0
Republic of Moldova	7 093	99	256	6	Pending	0

Reporting Country/ Territory/Area	Total confirmed cases	Total confirmed new cases	Total deaths	Total new deaths	Transmission classification ⁱ	Days since last reported case
Finland	6 579	11	307	1	Pending	0
Azerbaijan	4 122	140	49	0	Clusters of cases	0
Luxembourg	3 992	2	110	1	Pending	0
Hungary	3 756	15	491	5	Community transmission	0
Uzbekistan	3 180	48	13	0	Clusters of cases	0
Tajikistan	2 929	191	46	2	Pending	0
Greece	2 878	2	171	0	Clusters of cases	0
Bulgaria	2 433	25	130	4	Clusters of cases	0
Bosnia and Herzegovina	2 391	20	141	1	Community transmission	0
Croatia	2 244	1	99	0	Community transmission	0
North Macedonia	1 978	37	113	0	Clusters of cases	0
Estonia	1 823	2	64	0	Pending	0
Iceland	1 804	0	10	0	Community transmission	1
Lithuania	1 623	7	63	0	Community transmission	0
Slovakia	1 509	5	28	0	Clusters of cases	0
Slovenia	1 509	31	107	1	Clusters of cases	0
Kyrgyzstan	1 433	30	16	2	Clusters of cases	0
Latvia	1 047	1	22	0	Clusters of cases	0
Albania	1 004	15	32	0	Clusters of cases	0
Cyprus	935	8	17	0	Clusters of cases	0
Andorra	763	0	51	0	Community transmission	1
Georgia	731	1	12	0	Community transmission	0
San Marino	672	0	42	0	Community transmission	3

Reporting Country/ Territory/Area	Total confirmed cases	Total confirmed new cases	Total deaths	Total new deaths	Transmission classification ⁱ	Days since last reported case
Malta	610	1	6	0	Sporadic cases	0
Montenegro	324	0	9	0	Clusters of cases	19
Monaco	98	0	1	0	Sporadic cases	1
Liechtenstein	83	0	1	0	Pending	29
Holy See	12	0	0	0	Sporadic cases	18
Territoriesⁱⁱ						
Kosovo ^[1]	1 032	7	29	0	Community transmission	0
Isle of Man	336	0	24	0	Pending	3
Jersey	306	0	29	0	Community transmission	3
Guernsey	252	0	13	0	Community transmission	22
Faroe Islands	187	0	0	0	Pending	31
Gibraltar	155	4	0	0	Clusters of cases	0
Greenland	11	0	0	0	Pending	49
South-East Asia						
India	138 845	6 977	4 021	154	Clusters of cases	0
Bangladesh	33 610	1 532	480	28	Clusters of cases	0
Indonesia	22 271	526	1 372	21	Community transmission	0
Thailand	3 042	2	57	1	Clusters of cases	0
Maldives	1 371	58	4	0	Clusters of cases	0
Sri Lanka	1 141	52	9	0	Clusters of cases	0
Nepal	675	91	3	0	Sporadic cases	0
Myanmar	201	0	6	0	Clusters of cases	2
Bhutan	27	3	0	0	Sporadic cases	0

Reporting Country/ Territory/Area	Total confirmed cases	Total confirmed new cases	Total deaths	Total new deaths	Transmission classification ⁱ	Days since last reported case
Timor-Leste	24	0	0	0	Clusters of cases	31
Western Pacific						
China	84 536	11	4 645	0	Clusters of cases	0
Singapore	31 616	548	23	0	Clusters of cases	0
Japan	16 581	31	830	10	Clusters of cases	0
Philippines	14 035	258	868	5	Community transmission	0
Republic of Korea	11 206	16	267	1	Clusters of cases	0
Malaysia	7 245	60	115	0	Clusters of cases	0
Australia	7 109	3	102	0	Clusters of cases	0
New Zealand	1 154	0	21	0	Clusters of cases	3
Viet Nam	325	0	0	0	Clusters of cases	1
Brunei Darussalam	141	0	1	0	Clusters of cases	17
Mongolia	141	0	0	0	Sporadic cases	2
Cambodia	124	0	0	0	Sporadic cases	2
Lao People's Democratic Republic	19	0	0	0	Sporadic cases	42
Fiji	18	0	0	0	Sporadic cases	34
Papua New Guinea	8	0	0	0	Sporadic cases	32
Territoriesⁱⁱ						
Guam	161	0	5	0	Clusters of cases	1
French Polynesia	89	0	0	0	Sporadic cases	2
Northern Mariana Islands (Commonwealth of the)	22	0	2	0	Pending	3

Reporting Country/ Territory/Area	Total confirmed cases	Total confirmed new cases	Total deaths	Total new deaths	Transmission classification ⁱ	Days since last reported case
New Caledonia	18	0	0	0	Sporadic cases	52
Subtotal for all regions	5 304 060	100 264	342 016	4 342		
Other*	712	0	13	0	-	70
Grand total	5 304 772	100 264	342 029	4 342		

**See [Annex 1](#) for data, table and figure notes.

Technical guidance and other resources

- To view all technical guidance documents regarding COVID-19, please go to [this webpage](#).
- Updates from WHO regional offices
 - [WHO AFRO](#)
 - [WHO EMRO](#)
 - [WHO EURO](#)
 - [WHO PAHO](#)
 - [WHO SEARO](#)
 - [WHO WPRO](#)
- [Research and Development](#)
- [Online courses on COVID-19](#) and in [additional national languages](#)
- [The Strategic Preparedness and Response Plan](#) (SPRP) outlining the support the international community can provide to all countries to prepare and respond to the virus
- [WHO Health Emergency dashboard](#)
- [Weekly COVID-19 Operations Updates](#)

Recommendations and advice for the public

- [Protect yourself](#)
- [Questions and answers](#)
- [Travel advice](#)
- [EPI-WIN](#): tailored information for individuals, organizations and communities

Case definitions

WHO periodically updates the [Global Surveillance for human infection with coronavirus disease \(COVID-19\)](#) document which includes surveillance definitions.

Definition of COVID-19 death

COVID-19 death is defined for surveillance purposes as a death resulting from a clinically compatible illness in a probable or confirmed COVID-19 case, unless there is a clear alternative cause of death that cannot be related to COVID-19 disease (e.g. trauma). There should be no period of complete recovery between the illness and death.

Further guidance for certification and classification (coding) of COVID-19 as cause of death is available [here](#).

Annex 1: Data, table and figure notes

Caution must be taken when interpreting all data presented. Differences are to be expected between information products published by WHO, national public health authorities, and other sources using different inclusion criteria and different data cut-off times. While steps are taken to ensure accuracy and reliability, all data are subject to continuous verification and change. Case detection, definitions, testing strategies, reporting practice, and lag times differ between countries/territories/areas. These factors, amongst others, influence the counts presented, with variable underestimation of true case and death counts, and variable delays to reflecting these data at global level.

The designations employed, and the presentation of these materials do not imply the expression of any opinion whatsoever on the part of WHO concerning the legal status of any country, territory or area or of its authorities, or concerning the delimitation of its frontiers or boundaries. Dotted and dashed lines on maps represent approximate border lines for which there may not yet be full agreement. Countries, territories and areas are arranged under the administering WHO region.

The mention of specific companies or of certain manufacturers' products does not imply that they are endorsed or recommended by WHO in preference to others of a similar nature that are not mentioned. Errors and omissions excepted, the names of proprietary products are distinguished by initial capital letters.

[¹] All references to Kosovo should be understood to be in the context of the United Nations Security Council resolution 1244 (1999). In the map, number of cases of Serbia and Kosovo (UNSCR 1244, 1999) have been aggregated for visualization purposes.

Counts reflect laboratory-confirmed cases and deaths, based on [WHO case definitions](#), unless stated otherwise (see Country, territory, or area-specific updates and errata), and include both domestic and repatriated cases.

Other*: includes cases reported from an international conveyance (Diamond Princess).

Due to the recent trend of countries conducting data reconciliation exercises which remove large numbers of cases or deaths from their total counts, WHO will now display such data as negative numbers in the "new cases" / "new deaths" columns as appropriate. This will aid readers in identifying when such adjustments occur. When additional details become available that allow the subtractions to be suitably apportioned to previous days, graphics will be updated accordingly. Prior situation reports will not be edited; see covid19.who.int for the most up-to-date data.

Additional table notes

ⁱ Transmission classification is based on a process of country/territory/area self-reporting. Classifications are reviewed on a weekly basis, may be revised as new information becomes available, and are based on the highest category reported. Differing degrees of transmission may be present within countries/territories/areas. Categories:

- No cases: with no confirmed cases
- Sporadic cases: with one or more cases, imported or locally detected.

- Clusters of cases: experiencing cases, clustered in time, geographic location and/or by common exposures.
- Community transmission: experiencing larger outbreaks of local transmission defined through an assessment of factors including, but not limited to: large numbers of cases not linkable to transmission chains; large numbers of cases from sentinel lab surveillance; and/or multiple unrelated clusters in several areas of the country/territory/area.
- Pending: transmission classification has not been reported to WHO.

ii “Territories” include territories, areas, overseas dependencies and other jurisdictions of similar status.

Country, territory, or area-specific updates and errata

None