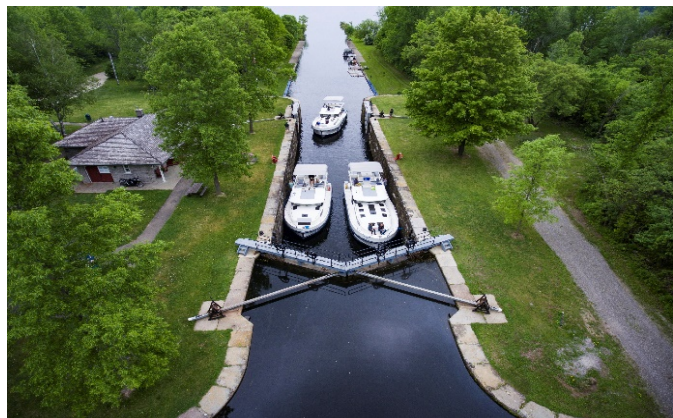
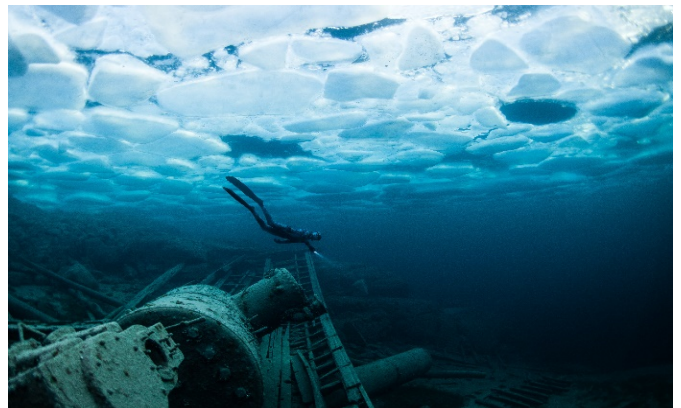
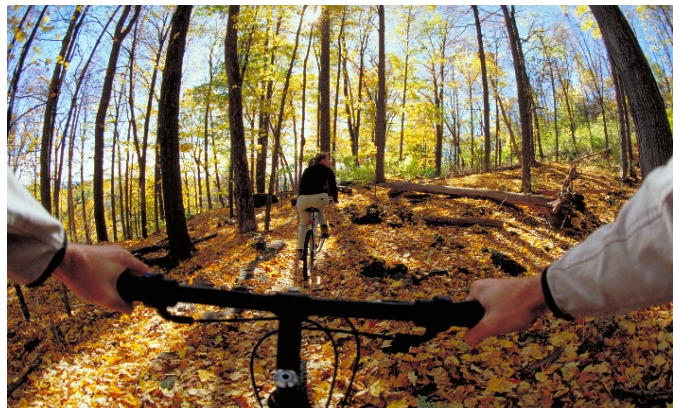




Ministère des  
Industries du  
patrimoine, du  
sport, du tourisme  
et de la culture

# Fonds pour le développement économique et la relance du tourisme 2020 - Liste des récipiendaires



Crédits photos: [Image Ontario](https://www.imageontario.com/)

<b>Récipiendaires</b>	<b>Lieu</b>	<b>Subvention</b>
<a href="#">Association de l'industrie touristique de l'Ontario</a>	Provincial	100 000 \$
<a href="#">Association des musées de l'Ontario</a>	Provincial	30 000 \$
<a href="#">Attractions Ontario</a>	Provincial	47 495 \$
<a href="#">Boating Ontario Association</a>	Provincial	72 685 \$
<a href="#">Chapleau Cree First Nation</a>	Chapleau	45 000 \$
<a href="#">Chippewas of Nawash Unceded First Nation</a>	Neyaashiinigiing	23 300 \$
<a href="#">Cruise Ontario</a>	Provincial	28 500 \$
<a href="#">Culinary Tourism Alliance</a>	Provincial	51 400 \$
<a href="#">Discovery Routes Trails</a>	Multirégional (Nord de l'Ontario)	10 000 \$
<a href="#">Festivals &amp; Events Ontario</a>	Provincial	64 540 \$
<a href="#">Fête de la culture</a>	Provincial	40 000 \$
<a href="#">La ville de Gananoque</a>	Gananoque	18 000 \$
<a href="#">Le Boat Limited</a>	Multirégional	49 500 \$
<a href="#">Le Centre culturel ARTEM</a>	Multirégional (Nord de l'Ontario)	50 000 \$
<a href="#">Municipality of Northern Bruce Peninsula</a>	Northern Bruce Peninsula	40 000 \$
<a href="#">Nature and Outdoor Tourism Ontario</a>	Provincial	71 685 \$
<a href="#">Ontario Business Improvement Area Association</a>	Provincial	66 969 \$
<a href="#">Ontario Craft Brewers</a>	Provincial	54 311 \$

<a href="#"><u>Ontario Motor Coach Association</u></a>	Provincial	116 084 \$
<a href="#"><u>Ontario Restaurant Hotel &amp; Motel Association</u></a>	Provincial	189 443 \$
<a href="#"><u>Ontario Tourism Innovation Lab – Windsor Hackforge</u></a>	Multirégional	40 000 \$
<a href="#"><u>Resorts of Ontario</u></a>	Provincial	55 000 \$
<a href="#"><u>Stackt Market</u></a>	Toronto	30 000 \$
<a href="#"><u>The Bentway Conservancy</u></a>	Toronto	41 000 \$
<a href="#"><u>Tourism Kingston</u></a>	Kingston	15 575 \$
<a href="#"><u>Tourism London</u></a>	London	30 000 \$
<a href="#"><u>Tourisme Sportif Canada</u></a>	Provincial	40 000 \$
<a href="#"><u>Town of Essex</u></a>	Essex	25 000 \$
<a href="#"><u>Town of Midland</u></a>	Midland	10 000 \$
<a href="#"><u>Town of South Bruce Peninsula</u></a>	South Bruce Peninsula	10 500 \$
<a href="#"><u>Township of Ear Falls</u></a>	Multirégional (Nord de l'Ontario)	25 000 \$