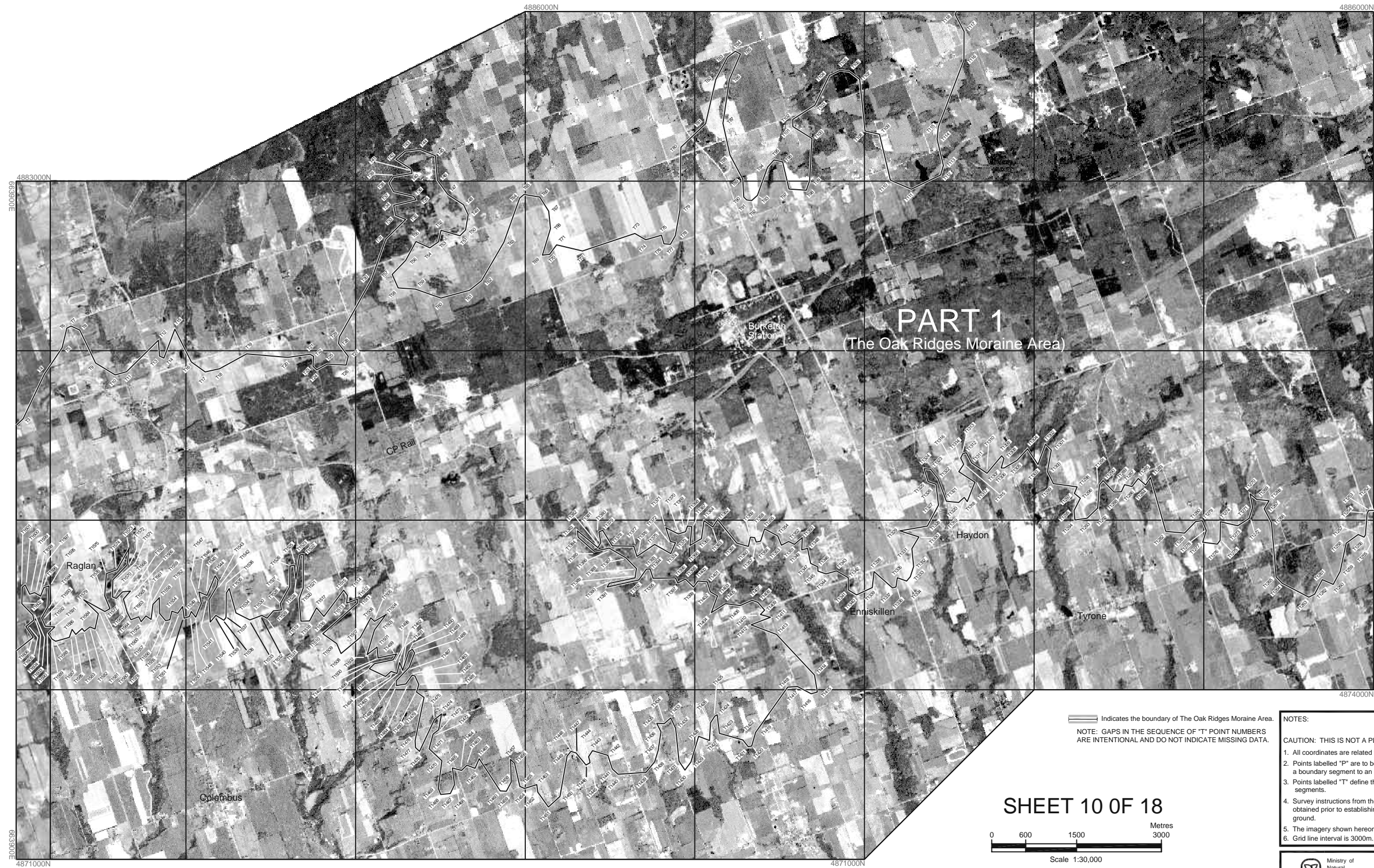
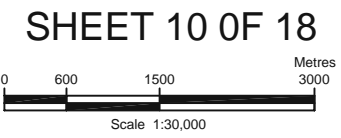


PLAN OF THE BOUNDARY OF THE OAK RIDGES MORaine AREA



— Indicates the boundary of The Oak Ridges Moraine Area.
 NOTE: GAPS IN THE SEQUENCE OF 'T' POINT NUMBERS ARE INTENTIONAL AND DO NOT INDICATE MISSING DATA.

- NOTES:
- CAUTION: THIS IS NOT A PLAN OF SURVEY.
- All coordinates are related to NAD83 CSRS(98)UTM Zone 17.
 - Points labelled "P" are to be used for the purpose of producing a boundary segment to an intersection.
 - Points labelled "T" define the beginning and end of boundary segments.
 - Survey instructions from the Surveyor General must be obtained prior to establishing any of the boundaries on the ground.
 - The imagery shown herein is for illustrative purposes only.
 - Grid line interval is 3000m.



DATE COMPLETED:October.....2001.....

This plan was compiled from 5 metre resolution - Indian Remote Sensor Images (IRS) and data sets supplied by the Natural Resources and Values Information System (NRVIS) of record in the Ministry of Natural Resources.