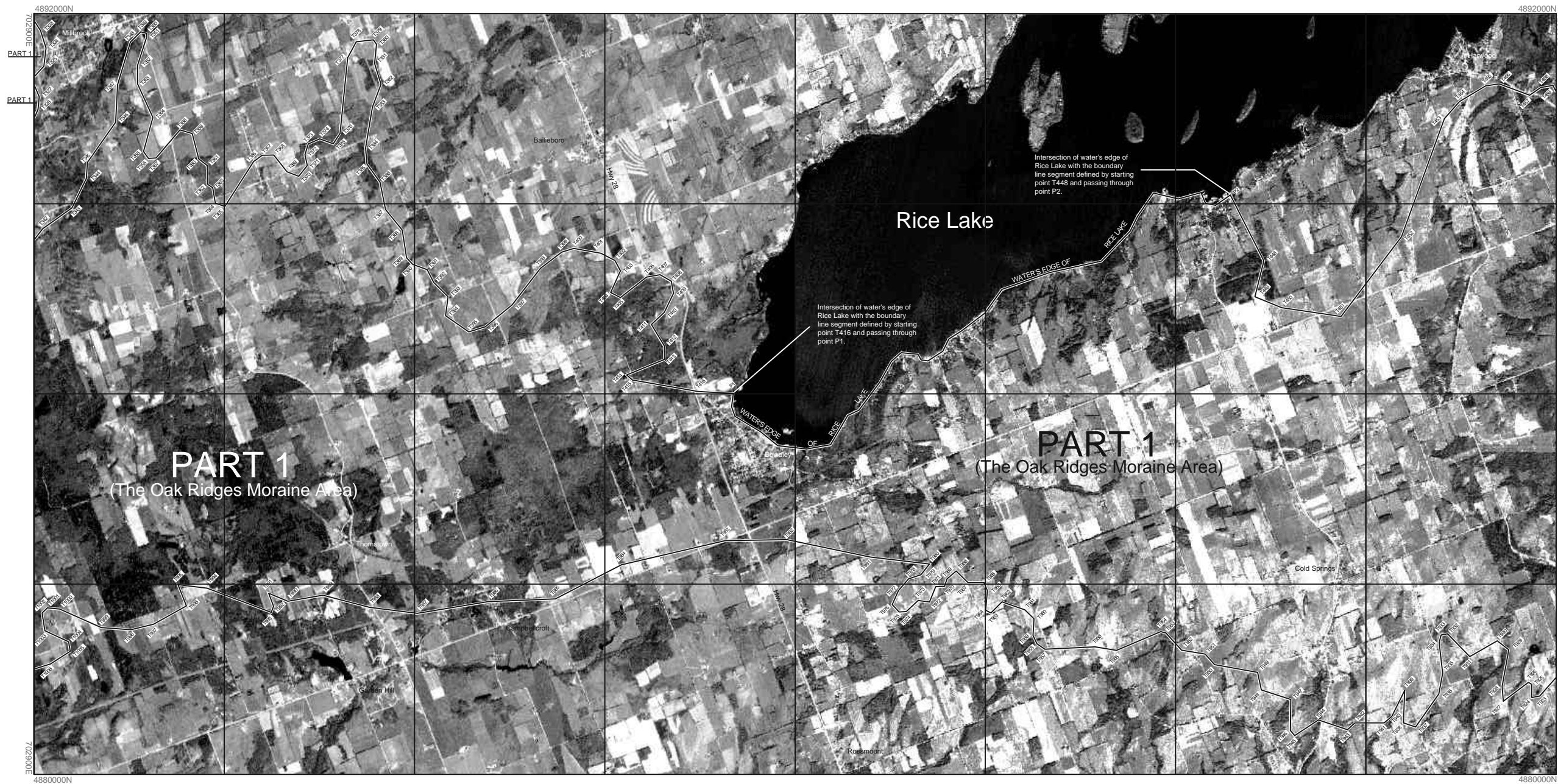


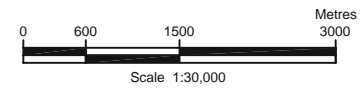
# PLAN OF THE BOUNDARY OF THE OAK RIDGES MORAINE AREA



Indicates the boundary of The Oak Ridges Moraine Area.  
 NOTE: GAPS IN THE SEQUENCE OF "T" POINT NUMBERS ARE INTENTIONAL AND DO NOT INDICATE MISSING DATA.



**SHEET 13 OF 18**



- NOTES:**
- CAUTION: THIS IS NOT A PLAN OF SURVEY.
  - 1. All coordinates are related to NAD83 CSRS(98)UTM Zone 17.
  - 2. Points labelled "P" are to be used for the purpose of producing a boundary segment to an intersection.
  - 3. Points labelled "T" define the beginning and end of boundary segments.
  - 4. Survey instructions from the Surveyor General must be obtained prior to establishing any of the boundaries on the ground.
  - 5. The imagery shown hereon is for illustrative purposes only.
  - 6. Grid line interval is 3000m.



DATE COMPLETED: .....October.....2001.....

Produced by: CAUTION: INCLUDES MATERIAL © SPACEIMAGING LLC

This plan was compiled from 5 metre resolution - Indian Remote Sensor Images (IRS) and data sets supplied by the Natural Resources and Values Information System (NRVIS) of record in the Ministry of Natural Resources.  
 Produced by: Office Of The Surveyor General