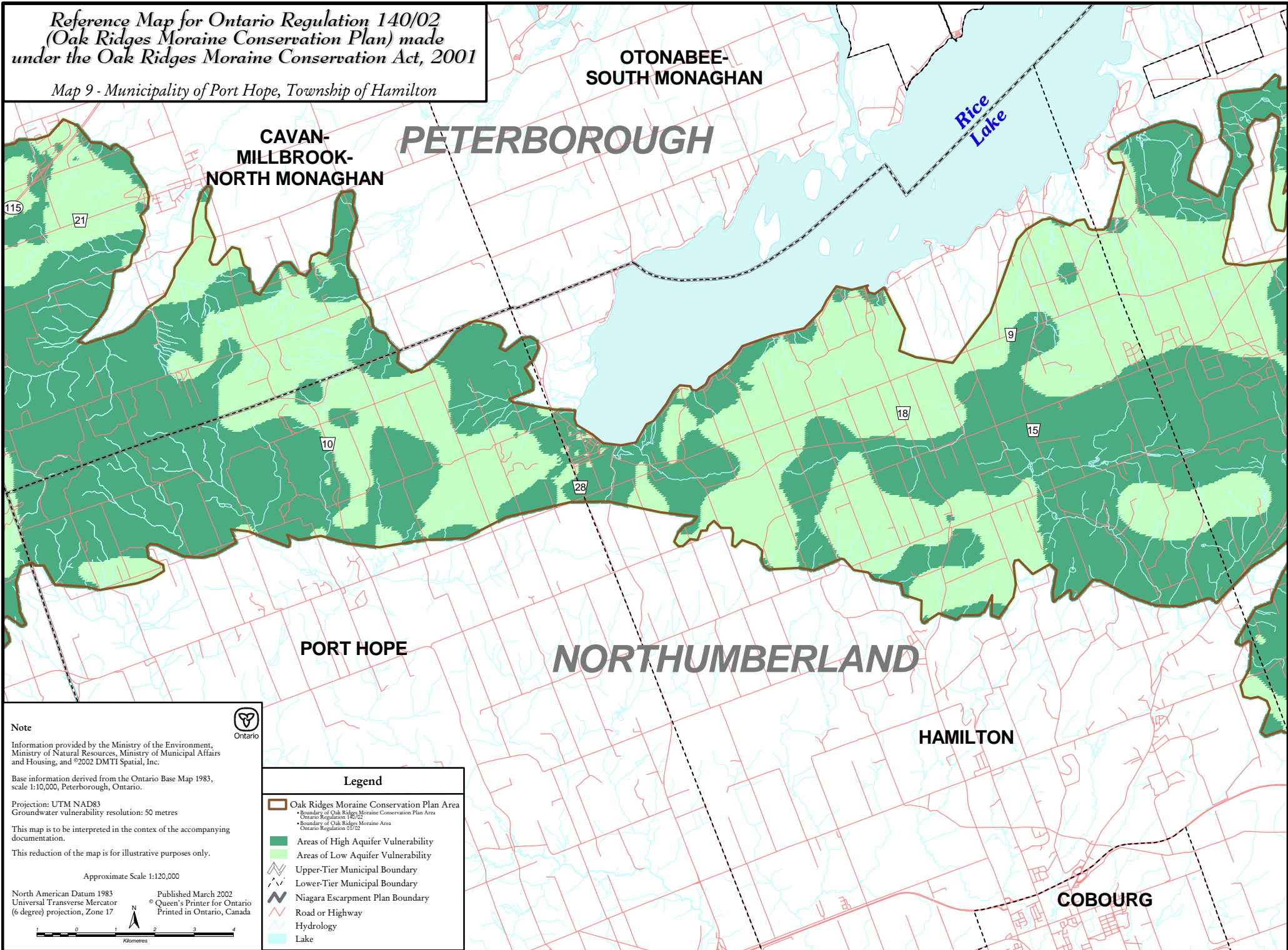


Reference Map for Ontario Regulation 140/02
(Oak Ridges Moraine Conservation Plan) made
under the Oak Ridges Moraine Conservation Act, 2001

Map 9 - Municipality of Port Hope, Township of Hamilton



Note

Information provided by the Ministry of the Environment,
Ministry of Natural Resources, Ministry of Municipal Affairs
and Housing, and ©2002 DMTI Spatial, Inc.

Base information derived from the Ontario Base Map 1983,
scale 1:10,000, Peterborough, Ontario.

Projection: UTM NAD83
Groundwater vulnerability resolution: 50 metres

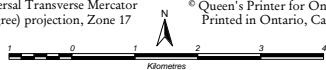
This map is to be interpreted in the context of the accompanying
documentation.

This reduction of the map is for illustrative purposes only.

Approximate Scale 1:120,000

North American Datum 1983
Universal Transverse Mercator
(6 degree) projection, Zone 17

Published March 2002
© Queen's Printer for Ontario
Printed in Ontario, Canada



Legend

- Oak Ridges Moraine Conservation Plan Area
- Boundary of Oak Ridges Moraine Conservation Plan Area
Ontario Regulation 140/02
- Boundary of Oak Ridges Moraine Area
Ontario Regulation 01/02
- Areas of High Aquifer Vulnerability
- Areas of Low Aquifer Vulnerability
- Upper-Tier Municipal Boundary
- Lower-Tier Municipal Boundary
- Niagara Escarpment Plan Boundary
- Road or Highway
- Hydrology
- Lake