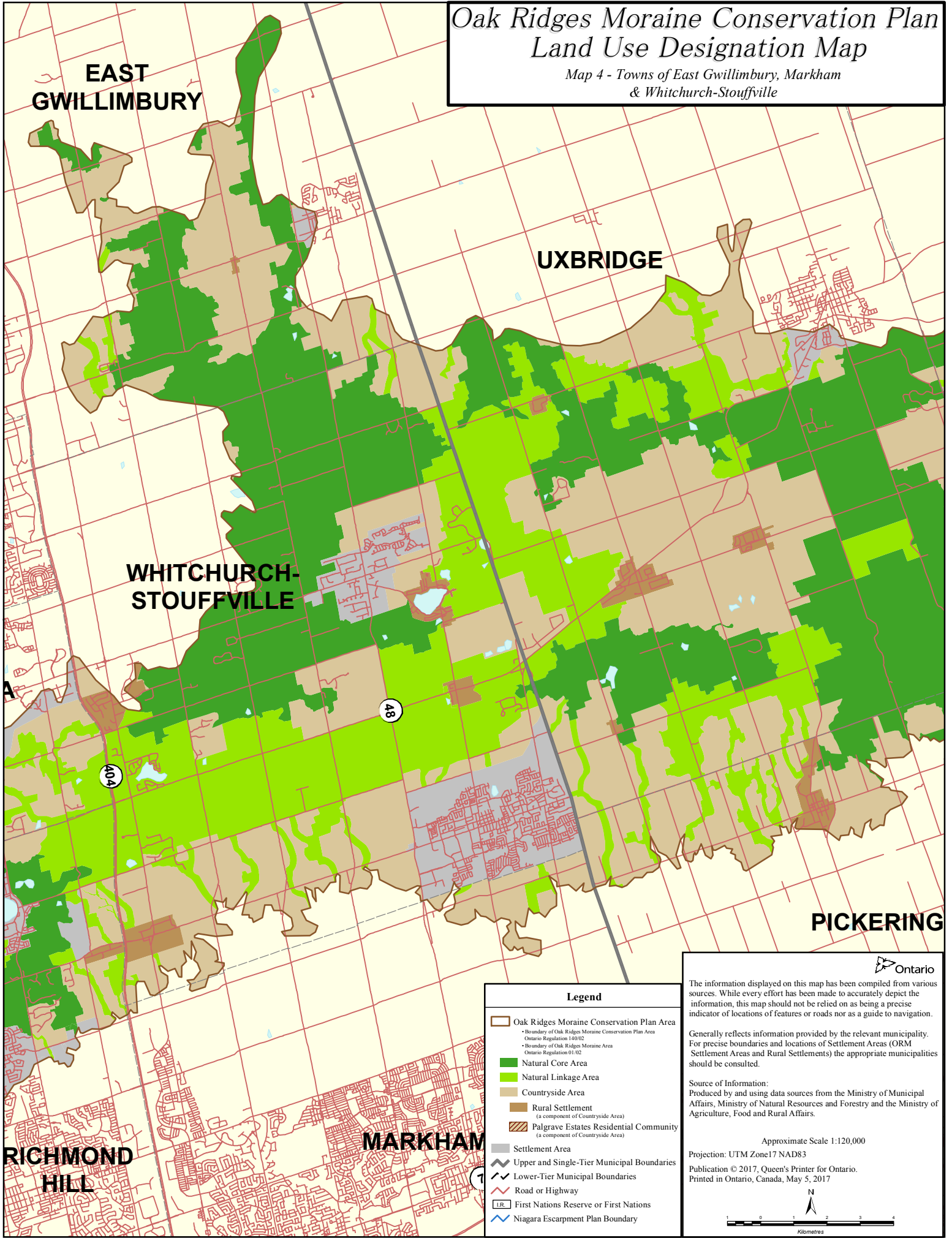


Oak Ridges Moraine Conservation Plan Land Use Designation Map

Map 4 - Towns of East Gwillimbury, Markham
& Whitchurch-Stouffville



**EAST
GWILLIMBURY**

UXBRIDGE

**WHITCHURCH-
STOUFFVILLE**

PICKERING

**RICHMOND
HILL**

MARKHAM

Legend

- Oak Ridges Moraine Conservation Plan Area
- Boundary of Oak Ridges Moraine Conservation Plan Area Ontario Regulation 140/02
- Boundary of Oak Ridges Moraine Area Ontario Regulation 01/02
- Natural Core Area
- Natural Linkage Area
- Countryside Area
- Rural Settlement (a component of Countryside Area)
- Palgrave Estates Residential Community (a component of Countryside Area)
- Settlement Area
- Upper and Single-Tier Municipal Boundaries
- Lower-Tier Municipal Boundaries
- Road or Highway
- First Nations Reserve or First Nations
- Niagara Escarpment Plan Boundary

Ontario

The information displayed on this map has been compiled from various sources. While every effort has been made to accurately depict the information, this map should not be relied on as being a precise indicator of locations of features or roads nor as a guide to navigation.

Generally reflects information provided by the relevant municipality. For precise boundaries and locations of Settlement Areas (ORM Settlement Areas and Rural Settlements) the appropriate municipalities should be consulted.

Source of Information:
Produced by and using data sources from the Ministry of Municipal Affairs, Ministry of Natural Resources and Forestry and the Ministry of Agriculture, Food and Rural Affairs.

Approximate Scale 1:120,000
Projection: UTM Zone17 NAD83
Publication © 2017, Queen's Printer for Ontario.
Printed in Ontario, Canada, May 5, 2017

Kilometres