

## Epidemiologic Summary

# COVID-19 in Ontario: January 15, 2020 to May 13, 2020

This report includes the most current information available from the integrated Public Health Information System (iPHIS) as of **4 p.m. May 13, 2020**, from the Toronto Public Health Coronavirus Rapid Entry System (CORES) and the Ottawa Public Health COVID-19 Ottawa Database (The COD) as of **2 p.m. May 13, 2020**.

Please visit the interactive [Ontario COVID-19 Data Tool](#) to explore recent COVID-19 data by public health unit, age group, sex, and view trends over time.

## Purpose

- This daily report provides an epidemiologic summary of COVID-19 activity in Ontario to date.

## Highlights

- There are 21,494 confirmed cases of COVID-19 in Ontario reported to date. This represents an increase of 258 confirmed cases from the previous report.
  - 42.0% of cases are male, 57.2% are female.
  - 43.0% of cases are 60 years of age and older.
  - Greater Toronto Area public health units account for 62.4% of cases.
  - 12.7% of cases were hospitalized.
- 1,798 deaths have been reported (please note there may be a reporting delay for deaths). This is an increase of 33 deaths from the previous report.
- 254 outbreaks have been reported in long-term care homes. This is a change of 2 outbreaks from the previous report.

## Case Characteristics

**Table 1. Summary of cases of COVID-19: Ontario, January 15, 2020 to May 13, 2020**

	Number	Percentage
Number of cases <sup>1</sup>	21,494	N/A
Change from previous report	258	1.2% increase
Gender: Male	9,037	42.0
Gender: Female	12,297	57.2
Ages: 19 and under	592	2.8
Ages: 20-39	5,118	23.8
Ages: 40-59	6,548	30.5
Ages: 60-79	4,589	21.4
Ages: 80 and over	4,632	21.6
Number of cases in health care workers	3,607	16.8

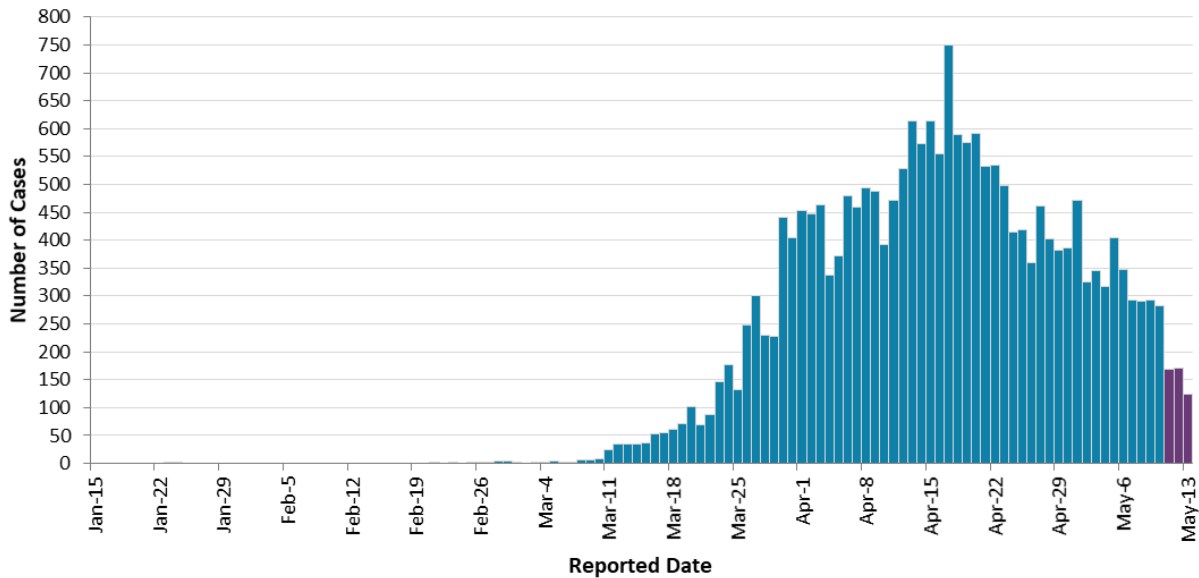
<sup>1</sup> Cases and rates by public health units are provided in [Appendix A](#).

**Note:** 160 cases did not specify male or female. 15 cases had an unknown age.

**Data Source:** integrated Public Health Information System (iPHIS) database, Coronavirus Rapid Entry System (CORES) database, The COVID-19 Ottawa Database (The COD).

# Time

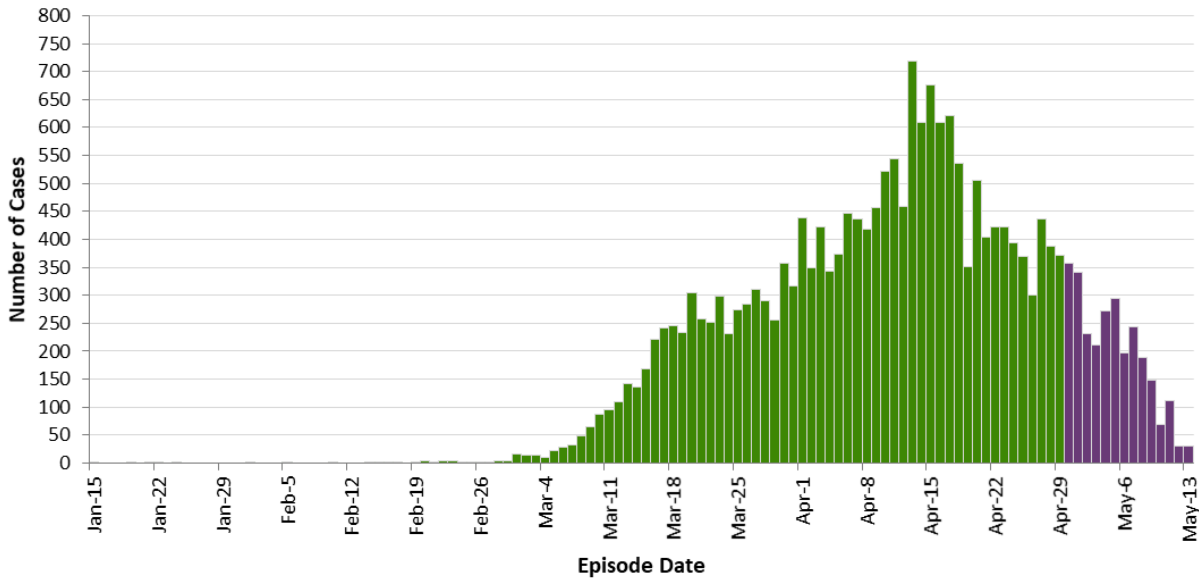
**Figure 1. Confirmed cases (n=21,494) of COVID-19 by reported date: Ontario, January 15, 2020 to May 13, 2020<sup>1</sup>**



<sup>1</sup> Interpret case counts for the most recent days (approximately 3 days, as shown in purple) with caution due to reporting lags.

**Data Source:** integrated Public Health Information System (iPHIS) database, Coronavirus Rapid Entry System (CORES) database, The COVID-19 Ottawa Database (The COD).

**Figure 2. Confirmed cases (n=21,492<sup>1</sup>) of COVID-19 by an approximation of symptom onset date<sup>2</sup>: Ontario, January 15, 2020 to May 13, 2020<sup>3</sup>**



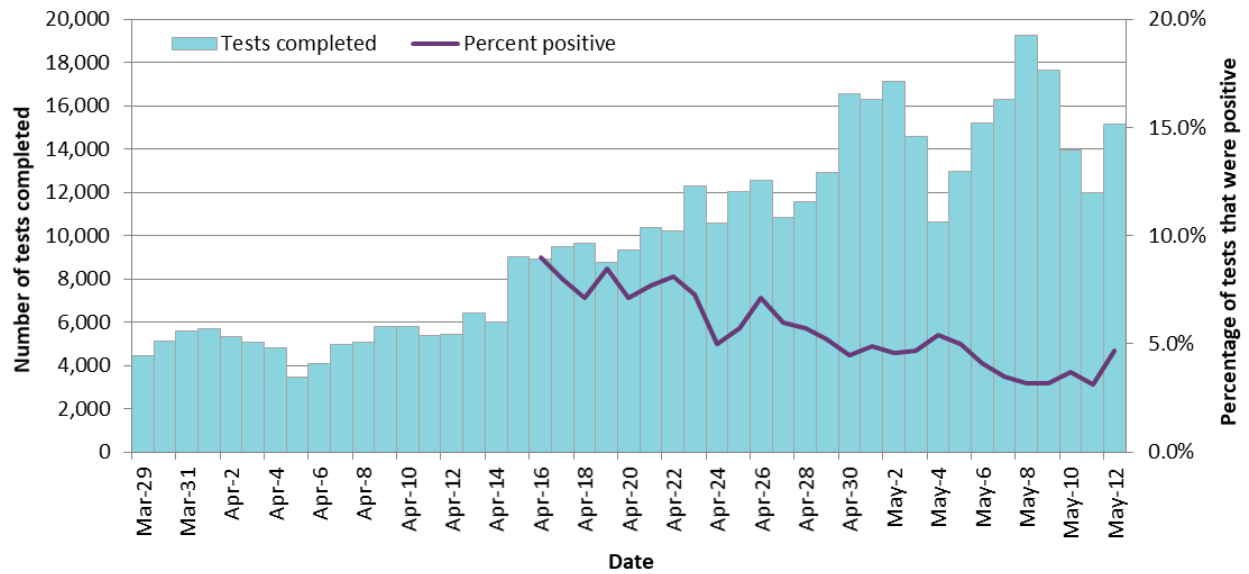
<sup>1</sup> This count excludes 2 cases that did not have an episode date.

<sup>2</sup> This date, referred to as episode date, is intended to approximate symptom onset date. It is calculated based on either the date of symptom onset, specimen collection/test date, or the date reported to public health.

<sup>3</sup> Interpret case counts for the most recent days (approximately 14 days, as shown in purple) with caution due to reporting lags.

**Data Source:** integrated Public Health Information System (iPHIS) database, Coronavirus Rapid Entry System (CORES) database, The COVID-19 Ottawa Database (The COD).

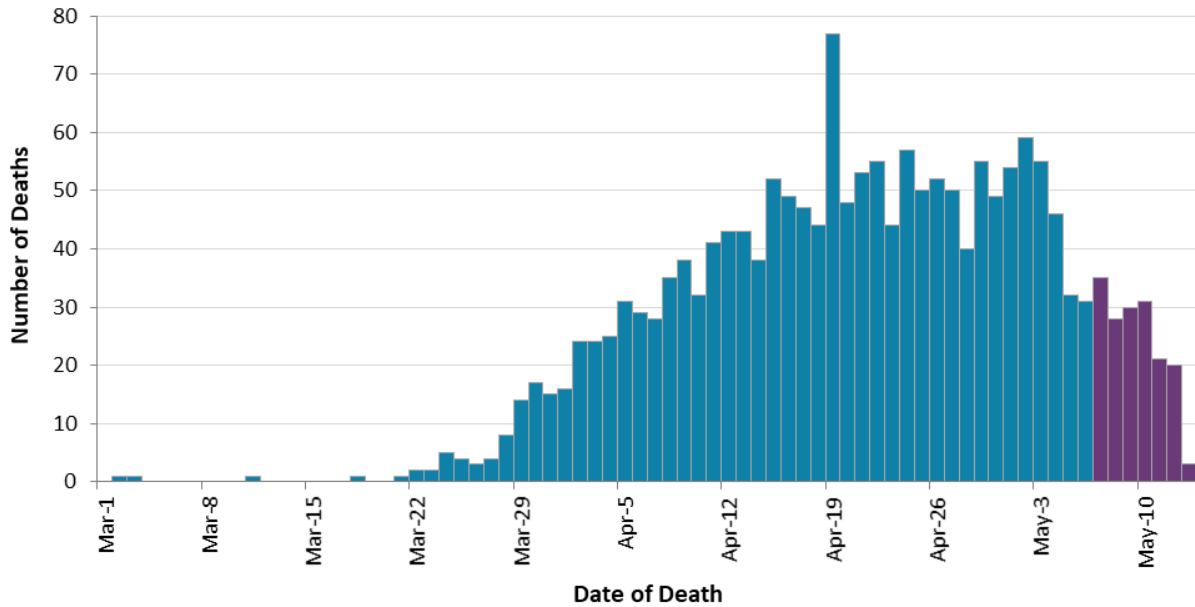
**Figure 3. Number of COVID-19 tests completed<sup>1</sup> and percent positivity: Ontario, March 29, 2020 to May 12, 2020**



<sup>1</sup>The number of tests performed does not reflect the number of specimens or persons tested. More than one test may be performed per specimen or per person. As such, the percentage of tests that were positive does not necessarily translate to the number of specimens or persons testing positive.

**Data Source:** The Provincial COVID-19 Diagnostics Network, data reported by member microbiology laboratories.

**Figure 4. Confirmed deaths (n=1,793<sup>1</sup>) among COVID-19 cases by date of death: Ontario, March 1, 2020 to May 13, 2020<sup>2</sup>**



<sup>1</sup>This count excludes 5 cases that did not have a date of death reported.

<sup>2</sup>Interpret case counts for the most recent days (approximately 7 days, as shown in purple) with caution due to reporting lags.

**Data Source:** integrated Public Health Information System (iPHIS) database, Coronavirus Rapid Entry System (CORES) database, The COVID-19 Ottawa Database (The COD).

## Exposure

**Table 2. Confirmed cases (n=21,494) of COVID-19 by exposure type: Ontario, January 15, 2020 to May 13, 2020**

	Number	Percentage
Travel <sup>1</sup>	1,471	6.8
Close contact of a confirmed case	4,938	23.0
Community transmission	7,807	36.3
Information pending	7,278	33.9

<sup>1</sup>Travel within the 14 days prior to becoming ill.

**Data Source:** integrated Public Health Information System (iPHIS) database, Coronavirus Rapid Entry System (CORES) database, The COVID-19 Ottawa Database (The COD).

## Severity

**Table 3. Confirmed cases (n=21,494) of COVID-19 by severity: Ontario, January 15, 2020 to May 13, 2020**

	Number	Percentage
Cumulative deaths reported (please note there may be a reporting delay for deaths in iPHIS)	1,798	8.4
Change from previous report	33	1.9% increase
Deaths reported in ages: 19 and under	0	0.0
Deaths reported in ages: 20-39	7	0.1
Deaths reported in ages: 40-59	75	1.1
Deaths reported in ages: 60-79	442	9.6
Deaths reported in ages: 80 and over	1,274	27.5
Cumulative intensive care <sup>1</sup>	618	2.9
Cumulative hospitalized <sup>1</sup>	2,728	12.7
Number of resolved <sup>2</sup> cases	16,204	75.4

<sup>1</sup> These refer to all hospitalized or ICU admitted cases, not cases that are currently hospitalized or in ICU.

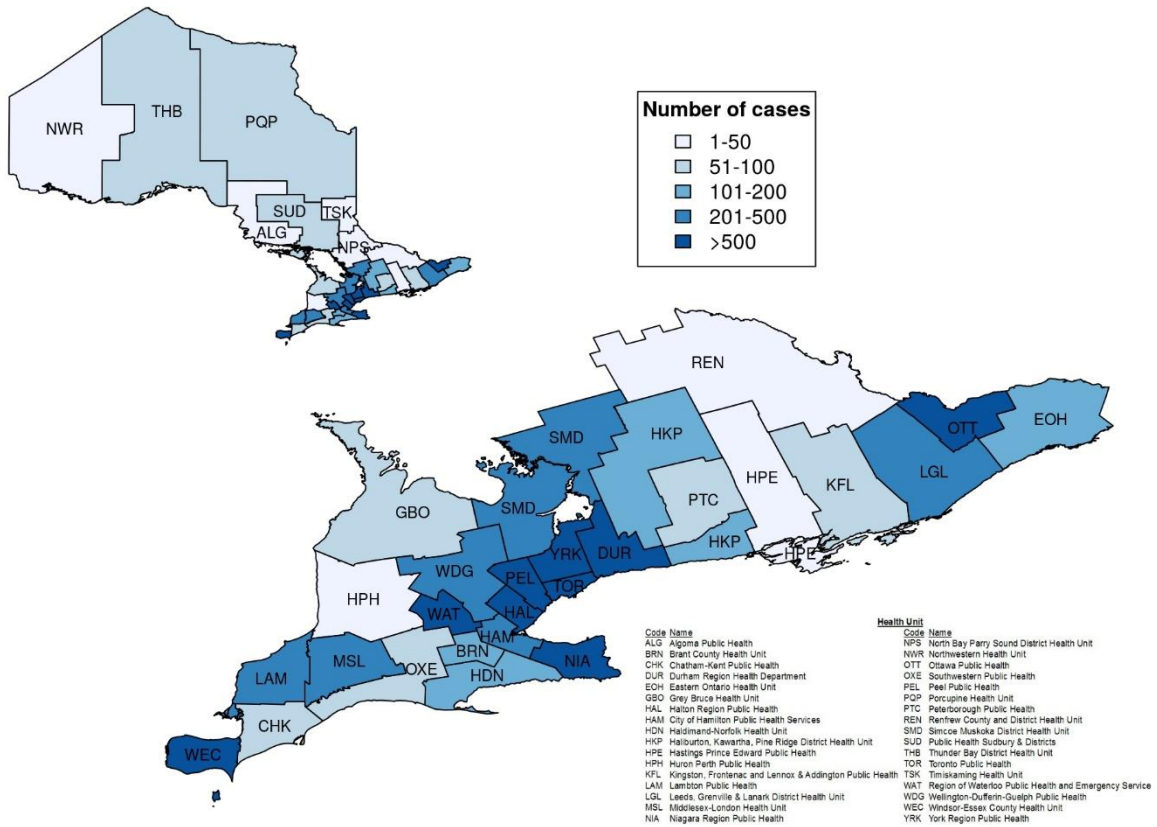
<sup>2</sup> Cases that are 14 days past symptom onset (if available) or 14 days past the episode date are classified as resolved for non-fatal cases that are not currently listed as hospitalized. Cases are also classified as resolved if the case is reported as “recovered” in iPHIS.

**Data Source:** integrated Public Health Information System (iPHIS) database, Coronavirus Rapid Entry System (CORES) database, The COVID-19 Ottawa Database (The COD).



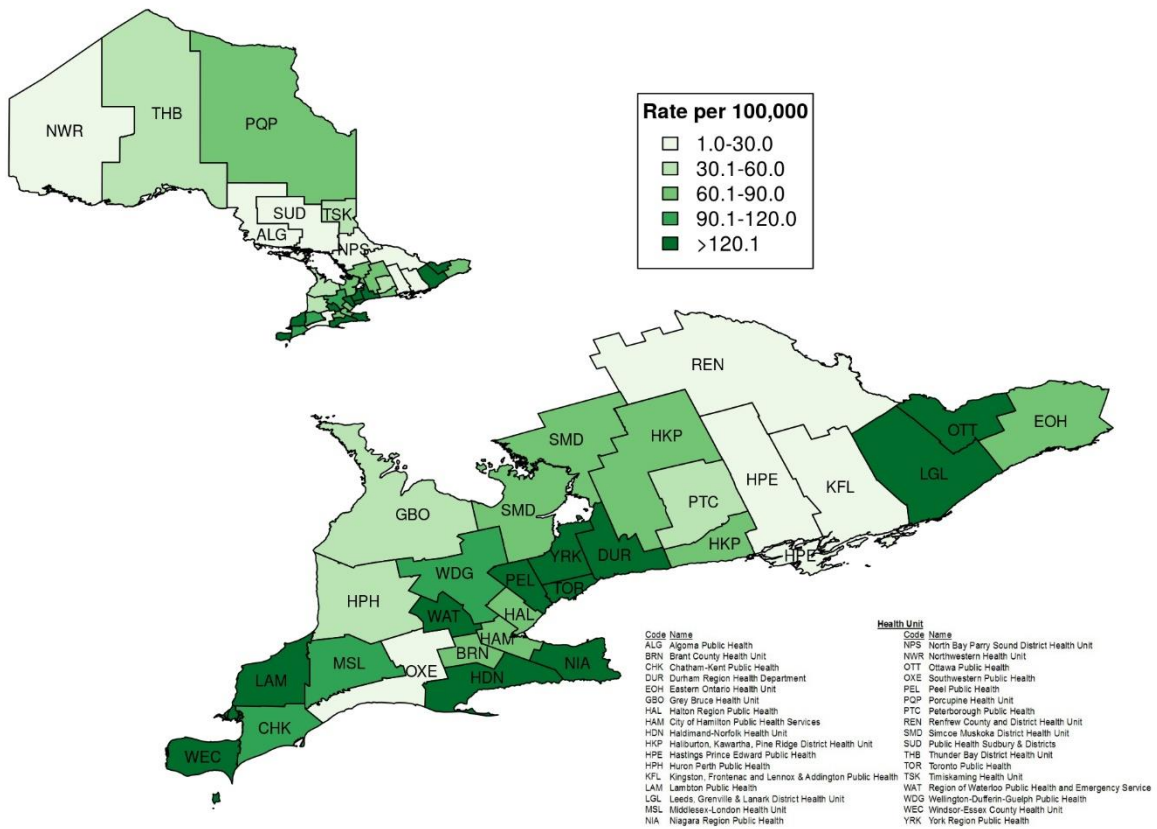
# Geography

**Figure 5. Confirmed cases (n=21,494) of COVID-19 by public health unit: Ontario, January 15, 2020 to May 13, 2020**



**Data Source:** integrated Public Health Information System (iPHIS) database, Coronavirus Rapid Entry System (CORES) database, The COVID-19 Ottawa Database (The COD).

**Figure 6. Rate of confirmed cases of COVID-19 by public health unit: Ontario, January 15, 2020 to May 13, 2020**



**Data Source:** integrated Public Health Information System (iPHIS) database, Coronavirus Rapid Entry System (CORES) database, The COVID-19 Ottawa Database (The COD).

## Outbreaks in Institutions and Public Hospitals

**Table 4. Confirmed COVID-19 outbreaks reported in long-term care homes, retirement homes and hospitals and total number of associated cases: Ontario, January 15, 2020 to May 13, 2020**

Indicator	Long-Term Care Homes	Retirement Homes	Hospitals
Cumulative number of confirmed COVID-19 outbreaks	254	110	76
Total number of cases <sup>1,2,3</sup> reported as part of the confirmed COVID-19 outbreaks	4,448	1,009	647
Cases reported among residents/patients	2,879	681	312
Cases reported among staff	1,564	328	326
Total number of deaths <sup>1,2,3</sup> reported as part of the confirmed COVID-19 outbreaks	815	142	52
Deaths reported among residents/patients	814	142	52
Deaths reported among staff	2	0	0

<sup>1</sup> Includes all outbreak-related cases and deaths reported in aggregate outbreak summary counts, regardless of whether the case was laboratory confirmed (deaths among non-laboratory confirmed cases reported here are not included in Table 3).

<sup>2</sup> May include cases and deaths other than residents/patients or staff, such as volunteers. As a result, the total number of cases and deaths may be greater than the number of cases and deaths reported in residents or staff.

<sup>3</sup> Counts may fluctuate from previous reports due to updates made by health units as additional information about the outbreak is reported.

**Data Source:** integrated Public Health Information System (iPHIS) database.

# Technical Notes

## Data Sources

- The data for this report were based on:
  - Information extracted from the Ontario Ministry of Health (MOH) integrated Public Health Information System (iPHIS) database, as of **May 13, 2020 at 4 p.m.**
  - Information successfully uploaded to the Ministry from Local Systems: the Toronto Public Health (Coronavirus Rapid Entry System) CORES and The Ottawa Public Health COVID-19 Ottawa Database (The COD), as of **May 13, 2020 at 2 p.m.**
- iPHIS, CORES and The COD are dynamic disease reporting systems, which allows ongoing updates to data previously entered. As a result, data extracted from iPHIS and the Local Systems represent a snapshot at the time of extraction and may differ from previous or subsequent reports.
- Ontario population projection data for 2020 were sourced from Ontario Ministry of Health, IntelliHEALTH Ontario. Data were extracted on November 26, 2019.
- COVID-19 test data were based on information from The Provincial COVID-19 Diagnostics Network, reported by member microbiology laboratories.

## Data Caveats:

- The data only represent cases reported to public health and recorded in iPHIS and the Local Systems (e.g., CORES, The COD). As a result, all counts will be subject to varying degrees of underreporting due to a variety of factors, such as disease awareness and medical care seeking behaviours, which may depend on severity of illness, clinical practice, changes in laboratory testing, and reporting behaviours.
- Lags in iPHIS and Local Systems data entry due to reduced holiday and weekend staffing may result in lower case counts than would otherwise be recorded.
- Only cases meeting the confirmed case classification as listed in the MOH [COVID-19 case definition](#) are included in the report counts from iPHIS the Local Systems.
- Case episode date is based on an estimate of the best date of disease onset. This date is calculated based on either the date of symptom onset, specimen collection/test date, or the date reported to public health.
- Orientation of case counts by geography is based on the diagnosing health unit (DHU). DHU refers to the case's public health unit of residence at the time of illness onset and not necessarily the location of exposure. Cases for which the DHU was reported as MOH (to signify a case that is not a resident of Ontario) have been excluded from the analyses.
  - GTA health units include: Durham Region Health Department, Peel Public Health, Toronto Public Health and York Region Public Health

- Exposure type is determined by examining the exposure and risk factor fields from iPHIS to determine whether a case travelled, was a contact of a case or neither. A hierarchy has been applied as follows: Travel-related > Close contact of a confirmed case > Community transmission > Information pending.
- Exposure type is determined from Local Systems by examining the risk factor fields from Local Systems to determine whether a case travelled, was a contact of a case or neither. A hierarchy has been applied as follows: Travel-related > Close contact of a confirmed case > Community transmission > Information pending
- Deaths are determined by using the outcome field in iPHIS or Local Systems. Any case marked 'Fatal' is included in the deaths data. Deaths are included whether or not COVID-19 was determined to be a contributing or underlying cause of death as indicated in the iPHIS field Type of Death.
  - The date of death is determined using the outcome date field for cases marked as 'Fatal' in the outcome field.
- iPHIS cases for which the Disposition Status was reported as ENTERED IN ERROR, DOES NOT MEET DEFINITION, DUPLICATE-DO NOT USE, or any variation on these values have been excluded.
- To provide a measure of the impact of COVID-19 on long-term care homes and hospitals, the number of outbreaks and the associated cases are reported. To obtain the case and deaths data for these outbreaks, the aggregate counts recorded by public health units in the outbreak's summary counts section of iPHIS is used. This information is presented in table 4.
  - Previously only a select number of persons in institutional outbreaks would be tested for COVID-19, and there could still be circumstances where not all individuals end up being tested (e.g., the person dies before they can be tested).
  - These counts may not be updated as frequently as the information for laboratory-confirmed cases.
  - The information in the aggregate counts can not necessarily be reconciled with the laboratory-confirmed case data.

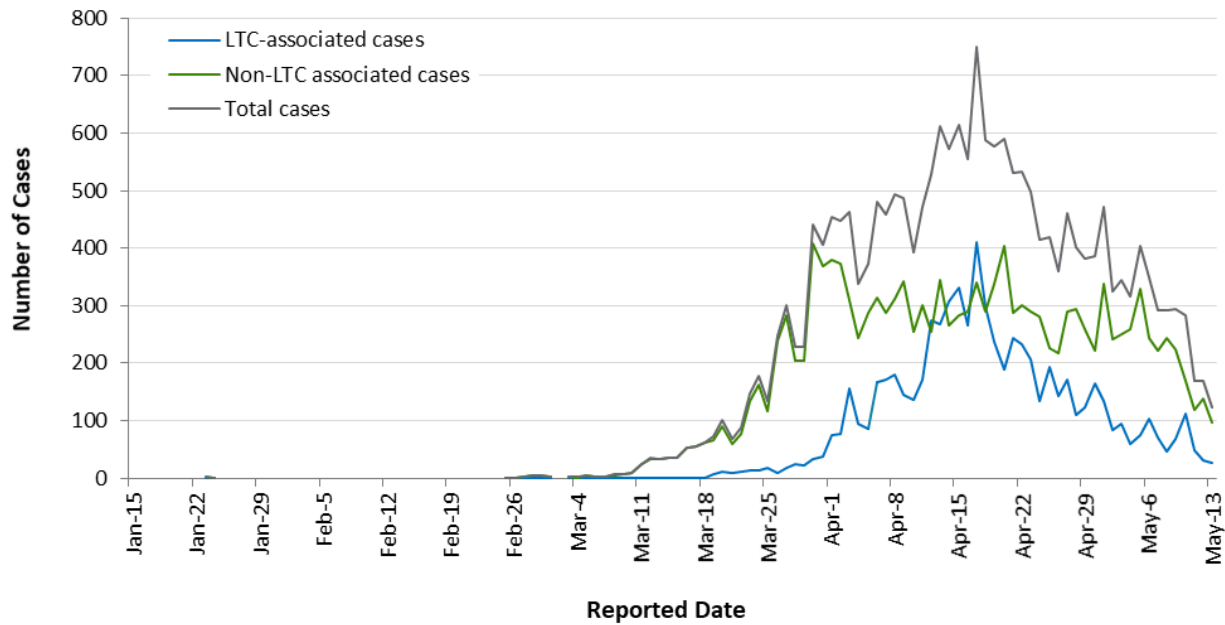
## Appendix A

**Table 1. Confirmed cases (n=21,494) of COVID-19 by public health unit: Ontario, January 15, 2020 to May 13, 2020**

Public Health Unit Name	Cases	Rate per 100,000 population
Northwestern Health Unit	17	19.4
Thunder Bay District Health Unit	78	52.0
<b>TOTAL NORTH WEST</b>	95	40.0
Algoma Public Health	16	14.0
North Bay Parry Sound District Health Unit	19	14.6
Porcupine Health Unit	65	77.9
Public Health Sudbury & Districts	59	29.6
Timiskaming Health Unit	18	55.1
<b>TOTAL NORTH EAST</b>	177	31.6
Ottawa Public Health	1,721	163.2
Eastern Ontario Health Unit	133	63.7
Hastings Prince Edward Public Health	43	25.5
Kingston, Frontenac and Lennox & Addington Public Health	60	28.2
Leeds, Grenville & Lanark District Health Unit	331	191.1
Renfrew County and District Health Unit	18	16.6
<b>TOTAL EASTERN</b>	2,306	119.7
Durham Region Health Department	1,193	167.5
Haliburton, Kawartha, Pine Ridge District Health Unit	160	84.7
Peel Public Health	3,115	194.0

Public Health Unit Name	Cases	Rate per 100,000 population
Peterborough Public Health	73	49.3
Simcoe Muskoka District Health Unit	398	66.4
York Region Public Health	1,892	154.3
<b>TOTAL CENTRAL EAST</b>	<b>6,831</b>	<b>152.5</b>
Toronto Public Health	7,215	231.2
<b>TOTAL TORONTO</b>	<b>7,215</b>	<b>231.2</b>
Chatham-Kent Public Health	97	91.2
Grey Bruce Health Unit	87	51.2
Huron Perth Public Health	50	35.8
Lambton Public Health	211	161.1
Middlesex-London Health Unit	476	93.8
Southwestern Public Health	62	29.3
Windsor-Essex County Health Unit	743	174.9
<b>TOTAL SOUTH WEST</b>	<b>1,726</b>	<b>102.1</b>
Brant County Health Unit	108	69.6
City of Hamilton Public Health Services	491	82.9
Haldimand-Norfolk Health Unit	196	171.8
Halton Region Public Health	525	84.8
Niagara Region Public Health	576	121.9
Region of Waterloo Public Health and Emergency Services	920	157.4
Wellington-Dufferin-Guelph Public Health	328	105.2
<b>TOTAL CENTRAL WEST</b>	<b>3,144</b>	<b>110.3</b>
<b>TOTAL ONTARIO</b>	<b>21,494</b>	<b>144.6</b>

**Figure 1. Confirmed cases (n=21,494) of COVID-19 by reported date and association with long-term care homes (LTC)<sup>1</sup>: Ontario, January 15, 2020 to May 13, 2020<sup>2</sup>**



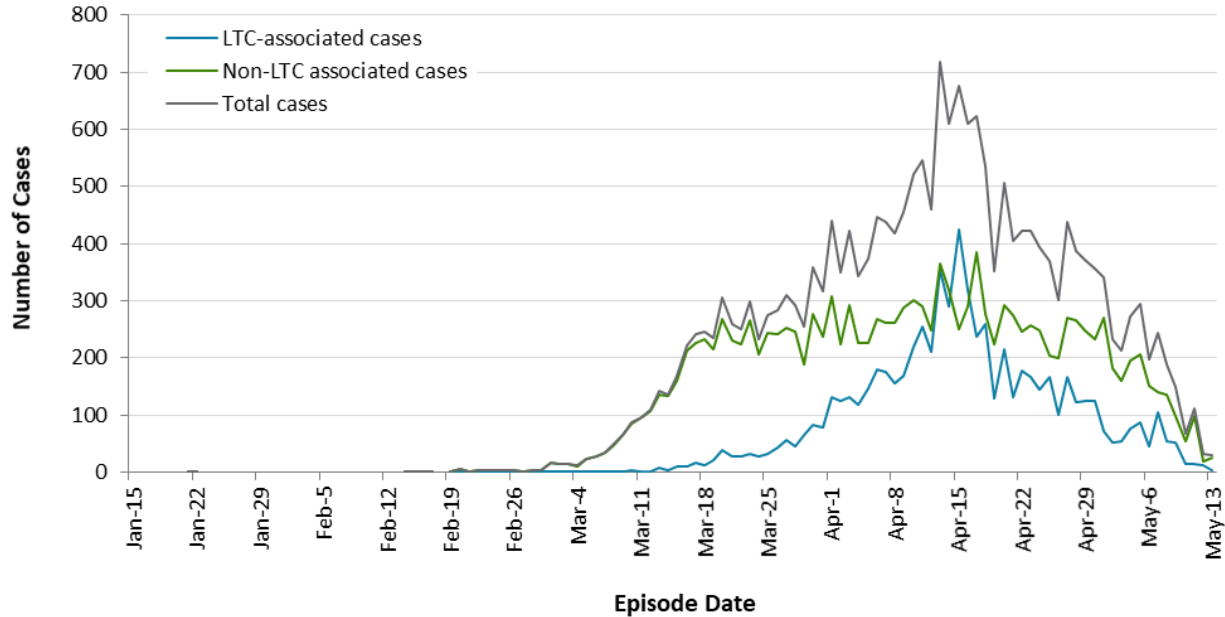
<sup>1</sup> LTC associated cases includes those that reported ‘yes’ to the risk factor ‘Resident of nursing home or other chronic care facility’ or were included in an outbreak in a long-term care home (may be residents or staff). Non-LTC associated cases includes those who did not meet the conditions above.

<sup>2</sup> Interpret case counts for the most recent days (approximately 3 days) with caution due to reporting lags.

**Data Source:** integrated Public Health Information System (iPHIS) database, Coronavirus Rapid Entry System (CORES) database, The COVID-19 Ottawa Database (The COD).



**Figure 2. Confirmed cases (n=21,492<sup>1</sup>) of COVID-19 by an approximation of symptom onset date<sup>2</sup> and association with long-term care homes (LTC)<sup>3</sup>: Ontario, January 15, 2020 to May 13, 2020<sup>4</sup>**



<sup>1</sup>This count excludes 2 cases that did not have an episode date

<sup>2</sup> This date, referred to as episode date, is intended to approximate symptom onset date. It is calculated based on either the date of symptom onset, specimen collection/test date, or the date reported to public health.

<sup>3</sup> LTC associated cases includes those that reported 'yes' to the risk factor 'Resident of nursing home or other chronic care facility' or were included in an outbreak in a long-term care home (may be residents or staff). Non-LTC associated cases includes those who did not meet the conditions above.

<sup>4</sup> Interpret case counts for the most recent days (approximately 14 days) with caution due to reporting lags.

**Data Source:** integrated Public Health Information System (iPHIS) database, Coronavirus Rapid Entry System (CORES) database, The COVID-19 Ottawa Database (The COD).

## Disclaimer

This document was developed by Public Health Ontario (PHO). PHO provides scientific and technical advice to Ontario's government, public health organizations and health care providers. PHO's work is guided by the current best available evidence at the time of publication.

The application and use of this document is the responsibility of the user. PHO assumes no liability resulting from any such application or use.

This document may be reproduced without permission for non-commercial purposes only and provided that appropriate credit is given to PHO. No changes and/or modifications may be made to this document without express written permission from PHO.

## Citation

Ontario Agency for Health Protection and Promotion (Public Health Ontario). Epidemiologic summary: COVID-19 in Ontario – January 15, 2020 to May 13, 2020. Toronto, ON: Queen's Printer for Ontario; 2020.

## For Further Information

For more information, email [cd@oahpp.ca](mailto:cd@oahpp.ca).

## Public Health Ontario

Public Health Ontario is an agency of the Government of Ontario dedicated to protecting and promoting the health of all Ontarians and reducing inequities in health. Public Health Ontario links public health practitioners, front-line health workers and researchers to the best scientific intelligence and knowledge from around the world.

For more information about PHO, visit [publichealthontario.ca](http://publichealthontario.ca).

