

Daily Epidemiologic Summary

COVID-19 in Ontario: January 15, 2020 to November 21, 2020

This report includes the most current information available from CCM and other case management systems (CCM plus) as of **November 21, 2020**.

Please visit the interactive [Ontario COVID-19 Data Tool](#) to explore recent COVID-19 data by public health unit, age group, sex, and trends over time.

A weekly summary report is available with additional information to complement the daily report.

This **daily** report provides an epidemiologic summary of recent COVID-19 activity in Ontario. The change in cases is determined by taking the cumulative difference between the current day and the previous day.

Highlights

- There are a total of 103,912 confirmed cases of COVID-19 in Ontario reported to date.
- Compared to the previous day, this represents:
 - An increase of 1,534 confirmed cases (percent change of -3.4%)
 - An increase of 14 deaths (percent change of -33.3%)
 - An increase of 1,429 resolved cases (percent change of +4.8%)

In this document, the term 'change in cases' refers to cases publicly reported by the province for a given day. Data corrections or updates can result in case records being removed and or updated from past reports and may result in subset totals for updated case counts (i.e., age group, gender) differing from the overall updated case counts.

The term public health unit reported date in this document refers to the date local public health units were first notified of the case.

Case Characteristics

Table 1a. Summary of recent confirmed cases of COVID-19: Ontario

	Change in cases November 20	Change in cases November 21	Percentage change November 21 compared to November 20	Cumulative case count as of November 21
Total number of cases	1,588	1,534	-3.4%	103,912
Number of deaths	21	14	-33.3%	3,486
Number resolved	1,363	1,429	4.8%	87,508

Note: The number of cases publicly reported by the province each day may not align with case counts reported to public health on a given day; public health unit reported date refers to the date local public health was first notified of the case.

Data Source: CCM plus

Table 1b. Summary of recent confirmed cases of COVID-19 by age group and gender: Ontario

	Change in cases November 20	Change in cases November 21	Cumulative case count as of November 21
Gender: Male	787	786	50,327
Gender: Female	792	739	53,017
Ages: 19 and under	234	276	12,167
Ages: 20-39	590	562	37,711
Ages: 40-59	458	404	29,609
Ages: 60-79	230	230	15,237
Ages: 80 and over	78	65	9,177

Note: Not all cases have a reported age or gender reported. Data corrections or updates can result in case records being removed and or updated from past reports and may result in subset totals (i.e., age group, gender) differing from past publicly reported case counts.

Data Source: CCM plus

Table 2. Summary of recent confirmed cases of COVID-19 in school aged children by age group, August 30 to November 21, 2020: Ontario

	Change in cases November 20	Change in cases November 21	Cumulative case count from August 30 to November 21
Ages: 4 to 8	31	52	1,685
Ages: 9 to 13	70	86	2,281
Ages: 14 to 17	51	73	2,329

Note: Includes all confirmed cases of COVID-19 for specified ages, regardless of school attendance. Data corrections or updates can result in case records being removed and or updated from past reports and may result in subset totals (i.e., age group) differing from past publicly reported case counts.

Data Source: CCM plus

Table 3. Summary of recent confirmed cases of COVID-19 in long-term care homes: Ontario

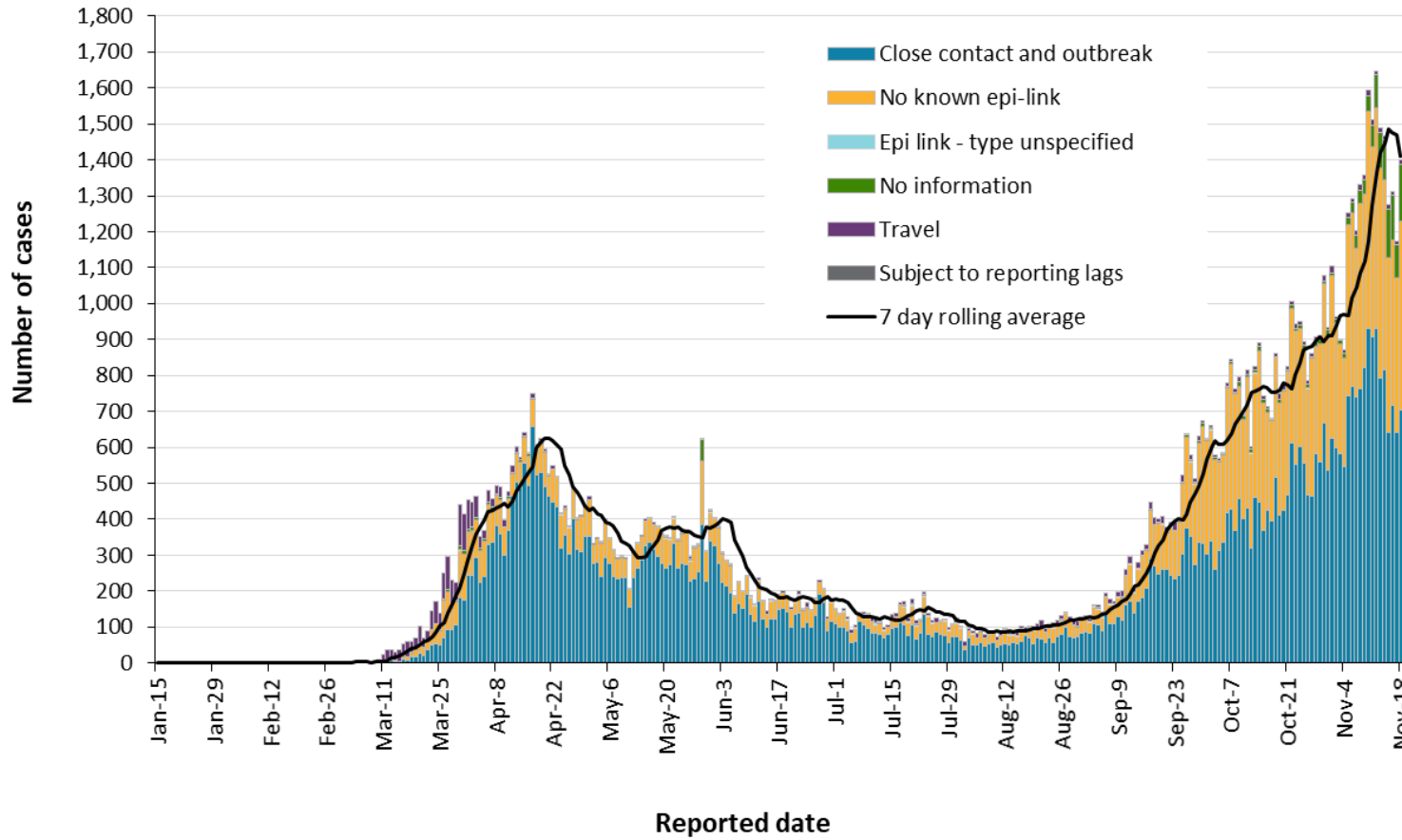
Long-term care home cases	Change in cases November 20	Change in cases November 21	Cumulative case count as of November 21
Residents	50	36	8,020
Health care workers	18	7	3,197
Deaths among residents	13	7	2,213
Deaths among health care workers	0	0	8

Note: Information on how long-term care home residents and health care workers are identified is available in the technical notes. Also, the change in cases in these categories may represent existing case records that have been updated.

Data Source: CCM plus

Time

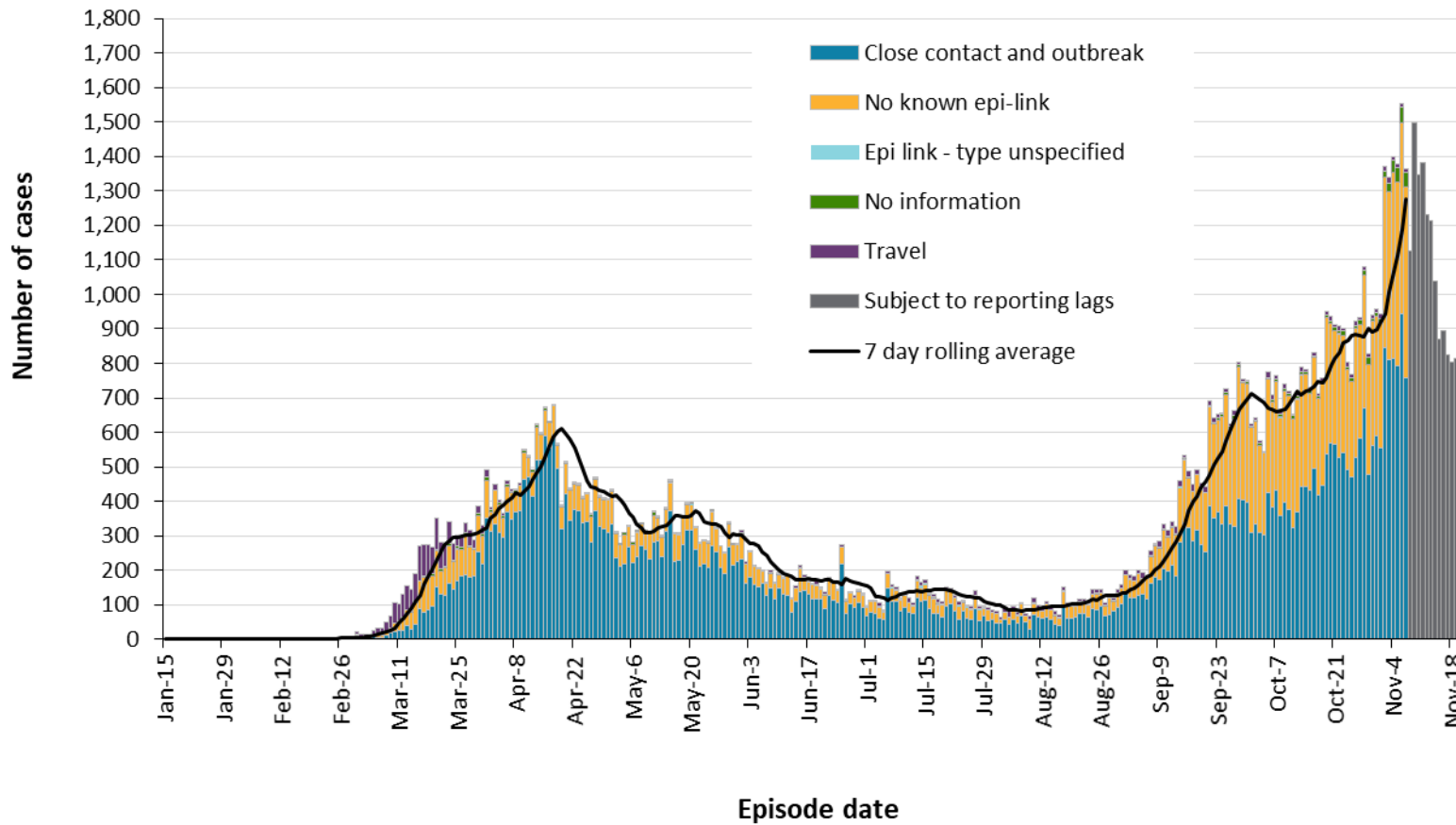
Figure 1. Confirmed cases of COVID-19 by likely acquisition and public health unit reported date: Ontario, January 15, 2020 to November 21, 2020



Data Source: CCM plus

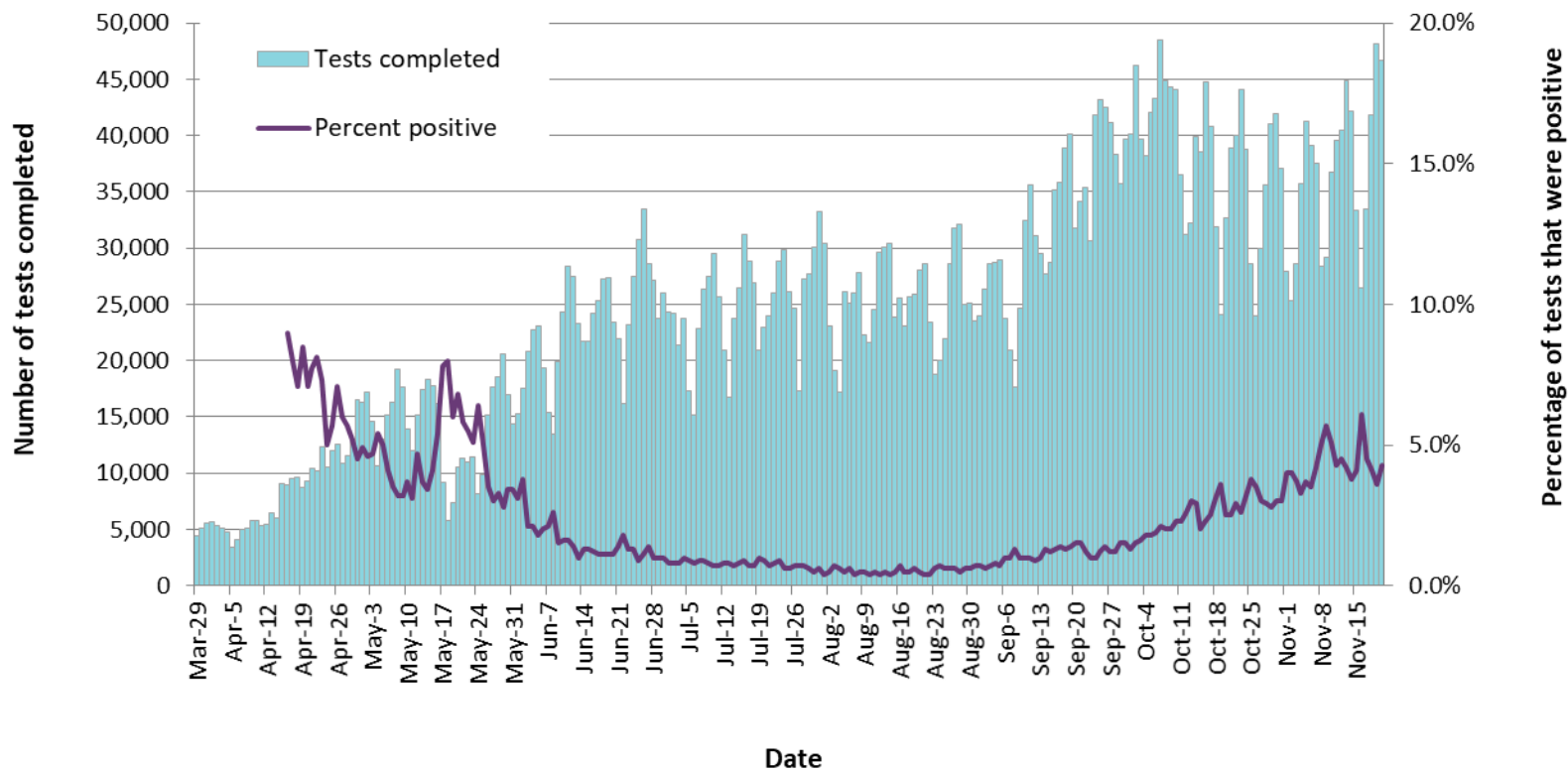
COVID-19 in Ontario: January 15, 2020 to November 21, 2020

Figure 2. Confirmed cases of COVID-19 by likely acquisition and approximation of symptom onset date: Ontario, January 15, 2020 to November 21, 2020



Note: Not all cases may have an episode date and those without one are not included in the figure. Episode date is defined and available in the technical notes.
Data Source: CCM plus

Figure 3. Number of COVID-19 tests completed and percent positivity: Ontario, March 29, 2020 to November 20, 2020

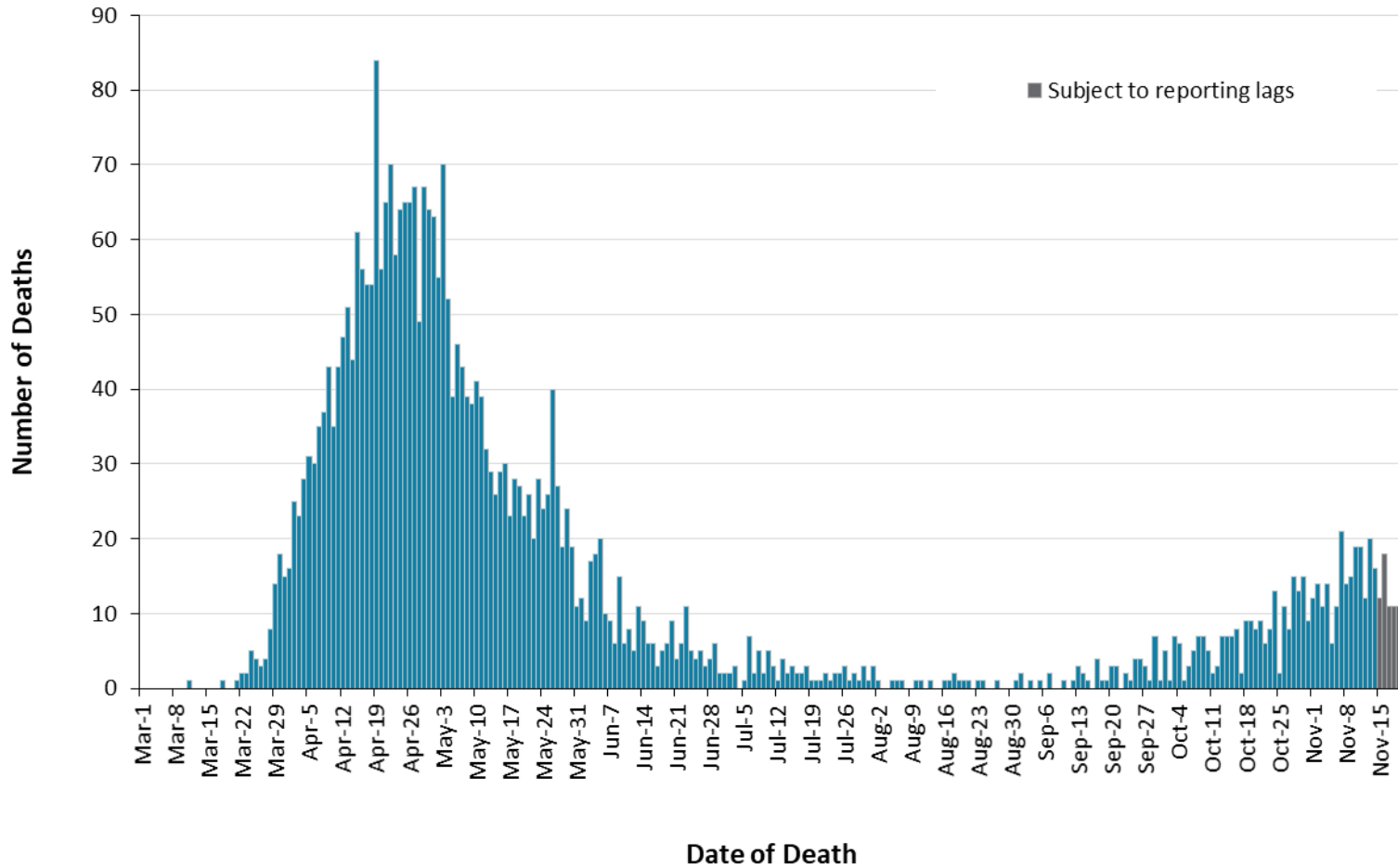


Note: The number of tests performed does not reflect the number of specimens or persons tested. More than one test may be performed per specimen or per person. As such, the percentage of tests that were positive does not necessarily translate to the number of specimens or persons testing positive.

Data Source: The Provincial COVID-19 Diagnostics Network, data reported by member microbiology laboratories.

Severity

Figure 4. Confirmed deaths among COVID-19 cases by date of death: Ontario, March 1, 2020 to November 21, 2020



Note: Cases without a death date are not included in the figure.

Data Source: CCM plus

COVID-19 in Ontario: January 15, 2020 to November 21, 2020

Table 4. Confirmed cases of COVID-19 by severity: Ontario

	Cumulative case count as of November 21	Percentage of all cases
Cumulative deaths reported (please note there may be a reporting delay for deaths)	3,486	3.4%
Deaths reported in ages: 19 and under	1	0.0%
Deaths reported in ages: 20-39	11	0.0%
Deaths reported in ages: 40-59	140	0.5%
Deaths reported in ages: 60-79	913	6.0%
Deaths reported in ages: 80 and over	2,420	26.4%
Ever in ICU	1,383	1.3%
Ever hospitalized	6,942	6.7%

Note: Not all cases have an age reported. Data corrections or updates can result in case records being removed and/or updated and may result in totals differing from past publicly reported case counts.

Data Source: CCM plus

Geography

Table 5. Summary of recent confirmed cases of COVID-19 by public health unit and region: Ontario

Public Health Unit Name	Change in cases November 20	Change in cases November 21	Cumulative case count	Cumulative rate per 100,000 population
Northwestern Health Unit	2	5	99	112.9
Thunder Bay District Health Unit	9	11	218	145.4
TOTAL NORTH WEST	11	16	317	133.4
Algoma Public Health	0	0	58	50.7
North Bay Parry Sound District Health Unit	1	1	64	49.3
Porcupine Health Unit	0	1	106	127.0
Public Health Sudbury & Districts	3	1	215	108.0
Timiskaming Health Unit	1	0	20	61.2
TOTAL NORTH EAST	5	3	463	82.8
Ottawa Public Health	36	32	8,170	774.7
Eastern Ontario Health Unit	3	7	773	370.4
Hastings Prince Edward Public Health	2	4	106	62.9
Kingston, Frontenac and Lennox & Addington Public Health	0	2	232	109.1
Leeds, Grenville & Lanark District Health Unit	0	0	478	276.0
Renfrew County and District Health Unit	0	2	125	115.1

Public Health Unit Name	Change in cases November 20	Change in cases November 21	Cumulative case count	Cumulative rate per 100,000 population
TOTAL EASTERN	41	47	9,884	513.1
Durham Region Health Department	56	50	4,017	563.9
Haliburton, Kawartha, Pine Ridge District Health Unit	2	4	283	149.8
Peel Public Health	522	490	21,766	1355.3
Peterborough Public Health	6	3	191	129.1
Simcoe Muskoka District Health Unit	26	24	1,892	315.5
York Region Public Health	153	130	9,473	772.8
TOTAL CENTRAL EAST	765	701	37,622	839.7
Toronto Public Health	450	460	35,950	1152.1
TOTAL TORONTO	450	460	35,950	1152.1
Chatham-Kent Public Health	0	4	477	448.7
Grey Bruce Health Unit	3	16	265	156.0
Huron Perth Public Health	7	5	273	195.3
Lambton Public Health	3	0	400	305.4
Middlesex-London Health Unit	26	7	1,459	287.5
Southwestern Public Health	6	4	487	230.3
Windsor-Essex County Health Unit	47	29	3,265	768.5
TOTAL SOUTH WEST	92	65	6,626	391.9
Brant County Health Unit	23	12	522	336.3

Public Health Unit Name	Change in cases November 20	Change in cases November 21	Cumulative case count	Cumulative rate per 100,000 population
City of Hamilton Public Health Services	47	66	2,686	453.6
Haldimand-Norfolk Health Unit	6	10	600	525.9
Halton Region Public Health	53	48	3,095	499.9
Niagara Region Public Health	34	22	1,971	417.2
Region of Waterloo Public Health and Emergency Services	42	54	2,989	511.5
Wellington-Dufferin-Guelph Public Health	19	30	1,187	380.6
TOTAL CENTRAL WEST	224	242	13,050	458.0
TOTAL ONTARIO	1,588	1,534	103,912	699.1

Notes: Health units with data corrections or updates could result in records being removed from totals resulting in negative counts.

Data Source: CCM plus

Outbreaks

Table 6. Summary of recent confirmed COVID-19 outbreaks reported in long-term care homes, retirement homes and hospitals by status: Ontario

Institution type	Change in outbreaks November 20	Change in outbreaks November 21	Number of ongoing outbreaks	Cumulative number of outbreaks reported
Long-term care homes	1	5	97	657
Retirement homes	0	2	63	328
Hospitals	2	0	28	156

Note: Ongoing outbreaks includes all outbreaks that are 'Open' in CCM plus without a 'Declared Over Date' recorded.

Data Source: CCM plus

Technical Notes

Data Sources

- The data for this report were based on:
 - Information extracted from the Ontario Ministry of Health (Ministry) integrated Public Health Information System (iPHIS) database for Toronto Public Health as of **November 21, 2020 at 3 p.m.**
 - Information successfully uploaded to the Ministry from Local Systems: Toronto Public Health (Coronavirus Rapid Entry System) CORES, The Ottawa Public Health COVID-19 Ottawa Database (The COD) and Middlesex-London COVID-19 Case and Contact Management Tool (CCMtool) as of **November 21, 2020 at 2 p.m.**
 - Information successfully uploaded to the Ministry from the Public Health Case and Contact Management Solution (CCM) for all other PHUs as of **November 21, 2020 at 1 p.m.**
- CCM and CCM plus (which includes CCM, iPHIS, CORES, The COD and COVID-19 CCMtool) are dynamic disease reporting systems, which allow ongoing updates to data previously entered. As a result, data extracted from CCM and the Local Systems represent a snapshot at the time of extraction and may differ from previous or subsequent reports.
- Ontario population projection data for 2020 were sourced from Ministry, IntelliHEALTH Ontario. Data were extracted on November 26, 2019.
- COVID-19 test data were based on information from The Provincial COVID-19 Diagnostics Network, reported by member microbiology laboratories.

Data Caveats

- The data only represent cases reported to public health units and recorded in CCM plus. As a result, all counts will be subject to varying degrees of underreporting due to a variety of factors, such as disease awareness and medical care seeking behaviours, which may depend on severity of illness, clinical practice, changes in laboratory testing, and reporting behaviours.
- Lags in CCM plus data entry due to weekend staffing may result in lower case counts than would otherwise be recorded.
- Only cases meeting the confirmed case classification as listed in the MOH [COVID-19 case definition](#) are included in the report counts from CCM plus. This includes persons with a positive detection of serum/plasma immunoglobulin G (IgG) antibodies to SARS-CoV-2, which was added to the confirmed case definition on August 6, 2020.
- The number of tests performed does not reflect the number of specimens or persons tested. More than one test may be performed per specimen or per person. As such, the percentage of tests that were positive does not necessarily translate to the number of specimens or persons testing positive.

- Reported date is the date the case was reported to the public health unit.
- Case episode date is based on an estimate of the best date of disease onset. This date is calculated based on either the date of symptom onset, specimen collection/test date, or the date reported to the public health unit.
- Resolved cases are determined only for COVID-19 cases that have not died. Cases that have died are considered fatal and not resolved. The following cases are classified as resolved:
 - Cases that are reported as 'recovered' in CCM
 - Cases that are not hospitalized and are 14 days past their episode date
 - Cases that are currently hospitalized (no hospital end date entered) and have a status of 'closed' in CCM (indicating public health unit follow-up is complete) and are 14 days past their symptom onset date or specimen collection date
- Hospitalization includes all cases for which a hospital admission date was reported at the time of data extraction. It includes cases that have been discharged from hospital as well as cases that are currently hospitalized. Emergency room visits are not included in the number of reported hospitalizations.
- ICU admission includes all cases for which an ICU admission date was reported at the time of data extraction. It is a subset of the count of hospitalized cases. It includes cases that have been treated or that are currently being treated in an ICU.
- Orientation of case counts by geography is based on the diagnosing health unit (DHU). DHU refers to the case's public health unit of residence at the time of illness onset and not necessarily the location of exposure. Cases for which the DHU was reported as MOH (to signify a case that is not a resident of Ontario) have been excluded from the analyses.
- Likely source of acquisition is determined by examining the epidemiologic link and epidemiologic link status fields in CCM and local systems. If no epidemiologic link is identified in those fields the risk factor fields are examined to determine whether a case travelled, was associated with a confirmed outbreak, was a contact of a case, had no known epidemiological link (sporadic community transmission) or was reported to have an unknown source/no information was reported. Some cases may have no information reported if the case is untraceable, was lost to follow-up or referred to FNIHB. Cases with multiple risk factors were assigned to a single likely acquisition source group which was determined hierarchically in the following order:
 - For cases with an episode date *on or after* April 1, 2020: Outbreak-associated > close contact of a confirmed case > travel > no known epidemiological link > information missing or unknown
 - For cases with an episode date *before* April 1, 2020: Travel > outbreak-associated > close contact of a confirmed case > no known epidemiological link > information missing or unknown

- Deaths are determined by using the outcome field in CCM plus. Any case marked 'Fatal' is included in the deaths data. The CCM field Type of Death is not used to further categorize the data.
 - The date of death is determined using the outcome date field for cases marked as 'Fatal' in the outcome field.
- CCM/iPHIS cases for which the Classification and/or Disposition was reported as ENTERED IN ERROR, DOES NOT MEET DEFINITION, IGNORE, DUPLICATE, or any variation on these values have been excluded. The provincial case count for COVID-19 includes cases that are counted once across all systems from which the case data are obtained. Duplicate records may exist if these records were not identified and resolved prior to data upload to the Ministry.
- Ongoing outbreaks are those that are reported in CCM plus as 'Open' without a 'Declared Over Date' recorded.
- 'Long-term care home residents' includes cases that reported 'Yes' to the risk factor 'Resident of a long-term care home'; or 'Yes' to the risk factor 'Resident of nursing home or other chronic care facility' and reported to be part of an outbreak assigned as a long-term care home (via the Outbreak number or case comments field); or were reported to be part of an outbreak assigned as a long-term care home (via the outbreak number or case comments field) with an age over 70 years and did not report 'No' to the risk factors 'Resident of long-term care home' or 'Resident of nursing home or other chronic care facility'. 'Long-term care home residents' excludes cases that reported 'Yes' to any of the health care worker occupational risk factors.
- The 'health care workers' variable includes cases that reported 'Yes' to any of the occupation of health care worker, doctor, nurse, dentist, dental hygienist, midwife, other medical technicians, personal support worker, respiratory therapist, first responder.
- 'Health care workers associated with long-term care outbreaks' includes 'health care workers' reported to be part of an outbreak assigned as a long-term care home (via the outbreak number or case comments field). Excludes cases that reported 'Yes' to risk factors 'Resident of long-term care home' or 'Resident of nursing home or other chronic care facility' and 'Yes' to the calculated 'health care workers' variable.
- Percent change is calculated by taking the difference between the current period (i.e., daily count or sum of the daily count over a 7-day period) and previous period (i.e., daily count or sum of the daily count over a 7-day period), divided by the previous period.

Appendix A

Table A1. Weekly rates of confirmed COVID-19 cases per 100,000 population over recent rolling 7-day periods, by reported date and public health unit: Ontario, November 6, 2020 to November 18, 2020

Public Health Unit Name	Nov 6 to Nov 12	Nov 7 to Nov 13	Nov 8 to Nov 14	Nov 9 to Nov 15	Nov 10 to Nov 16	Nov 11 to Nov 17	Nov 12 to Nov 18	% change from Nov 6-12 to Nov 12-18
NORTH WEST								
Northwestern Health Unit	9.1	10.3	9.1	9.1	10.3	12.5	8.0	-12.1%
Thunder Bay District Health Unit	18.0	18.7	18.7	23.3	28.7	36.0	38.0	+111.1%
NORTH EAST								
Algoma Public Health	8.7	8.7	7.9	2.6	1.7	0.9	0.9	-89.7%
North Bay Parry Sound District Health Unit	5.4	5.4	5.4	4.6	6.2	4.6	4.6	-14.8%
Porcupine Health Unit	3.6	2.4	4.8	3.6	3.6	2.4	3.6	0.0%
Public Health Sudbury & Districts	25.6	20.6	20.6	17.1	14.6	11.6	9.0	-64.8%
Timiskaming Health Unit	0.0	0.0	0.0	3.1	3.1	3.1	3.1	N/A
EASTERN								
Ottawa Public Health	39.9	39.9	37.7	36.1	34.3	33.2	32.0	-19.8%
Eastern Ontario Health Unit	22.0	22.0	21.6	23.0	19.6	19.6	17.7	-19.5%
Hastings Prince Edward Public Health	3.0	4.7	5.9	6.5	6.5	7.1	9.5	+216.7%
Kingston, Frontenac and Lennox & Addington Public Health	8.9	13.6	15.5	15.5	17.9	16.5	14.1	+58.4%

Public Health Unit Name	Nov 6 to Nov 12	Nov 7 to Nov 13	Nov 8 to Nov 14	Nov 9 to Nov 15	Nov 10 to Nov 16	Nov 11 to Nov 17	Nov 12 to Nov 18	% change from Nov 6-12 to Nov 12-18
Leeds, Grenville & Lanark District Health Unit	9.8	8.7	6.9	6.9	5.2	4.6	3.5	-64.3%
Renfrew County and District Health Unit	5.5	4.6	5.5	4.6	4.6	5.5	5.5	0.0%
CENTRAL EAST								
Durham Region Health Department	44.9	46.5	50.3	53.1	53.9	50.4	53.8	+19.8%
Haliburton, Kawartha, Pine Ridge District Health Unit	3.7	5.3	5.3	6.4	6.4	6.4	6.4	+73.0%
Peel Public Health	184.3	191.2	195.2	193.0	189.5	182.8	176.8	-4.1%
Peterborough Public Health	8.1	10.8	14.2	15.5	14.9	12.2	12.2	+50.6%
Simcoe Muskoka District Health Unit	24.4	25.9	30.5	30.5	33.0	31.4	32.5	+33.2%
York Region Public Health	75.5	76.5	82.9	85.7	88.5	82.2	83.1	+10.1%
TORONTO								
Toronto Public Health	102.6	102.0	104.6	103.2	102.5	98.8	97.3	-5.2%
SOUTH WEST								
Chatham-Kent Public Health	26.3	28.2	31.0	35.7	36.7	23.5	22.6	-14.1%
Grey Bruce Health Unit	11.2	14.1	14.7	18.8	20.0	20.6	30.0	+167.9%
Huron Perth Public Health	43.6	45.8	49.4	43.6	32.2	29.3	24.3	-44.3%
Lambton Public Health	5.3	5.3	4.6	5.3	6.9	8.4	9.2	+73.6%
Middlesex-London Health Unit	24.4	26.6	22.5	19.7	18.3	19.5	19.1	-21.7%

Public Health Unit Name	Nov 6 to Nov 12	Nov 7 to Nov 13	Nov 8 to Nov 14	Nov 9 to Nov 15	Nov 10 to Nov 16	Nov 11 to Nov 17	Nov 12 to Nov 18	% change from Nov 6-12 to Nov 12-18
Southwestern Public Health	22.2	26.5	29.3	30.7	32.2	29.3	29.3	+32.0%
Windsor-Essex County Health Unit	35.3	39.5	37.9	36.0	39.3	38.4	39.1	+10.8%
CENTRAL WEST								
Brant County Health Unit	27.7	25.8	29.6	30.3	32.9	32.2	30.9	+11.6%
City of Hamilton Public Health Services	54.0	50.2	47.6	43.4	43.4	40.0	42.6	-21.1%
Haldimand-Norfolk Health Unit	17.5	18.4	14.9	14.0	14.9	18.4	17.5	0.0%
Halton Region Public Health	57.2	57.8	56.5	58.5	60.6	58.6	58.3	+1.9%
Niagara Region Public Health	40.4	40.4	39.8	39.4	31.5	29.2	28.1	-30.4%
Region of Waterloo Public Health and Emergency Services	49.6	54.1	59.9	62.6	63.8	60.8	59.6	+20.2%
Wellington-Dufferin-Guelph Public Health	29.5	32.4	34.0	33.7	35.9	37.2	40.1	+35.9%
TOTAL ONTARIO	66.8	68.2	69.9	69.6	69.2	66.4	65.7	-1.6%

Note: Rates are based on the sum of the daily case counts during the date ranges specified in each column.

Data Source: CCM plus

Disclaimer

This document was developed by Public Health Ontario (PHO). PHO provides scientific and technical advice to Ontario's government, public health organizations and health care providers. PHO's work is guided by the current best available evidence at the time of publication.

The application and use of this document is the responsibility of the user. PHO assumes no liability resulting from any such application or use.

This document may be reproduced without permission for non-commercial purposes only and provided that appropriate credit is given to PHO. No changes and/or modifications may be made to this document without express written permission from PHO.

Citation

Ontario Agency for Health Protection and Promotion (Public Health Ontario). Epidemiologic summary: COVID-19 in Ontario – January 15, 2020 to November 21, 2020. Toronto, ON: Queen's Printer for Ontario; 2020.

For Further Information

For more information, email cd@oahpp.ca.

Public Health Ontario

Public Health Ontario is an agency of the Government of Ontario dedicated to protecting and promoting the health of all Ontarians and reducing inequities in health. Public Health Ontario links public health practitioners, front-line health workers and researchers to the best scientific intelligence and knowledge from around the world.

For more information about PHO, visit publichealthontario.ca.

