

## Daily Epidemiologic Summary

# COVID-19 in Ontario: January 15, 2020 to December 9, 2020

This report includes the most current information available from CCM and other case management systems (CCM plus) as of **December 9, 2020**.

Please visit the interactive [Ontario COVID-19 Data Tool](#) to explore recent COVID-19 data by public health unit, age group, sex, and trends over time.

A weekly summary report is available with additional information to complement the daily report.

This **daily** report provides an epidemiologic summary of recent COVID-19 activity in Ontario. The change in cases is determined by taking the cumulative difference between the current day and the previous day.

## Highlights

- There are a total of 134,783 confirmed cases of COVID-19 in Ontario reported to date.
- Compared to the previous day, this represents:
  - An increase of 1,983 confirmed cases (percent change of +4.9%)
  - An increase of 35 deaths (percent change of +25.0%)
  - An increase of 1,804 resolved cases (percent change of -6.2%)

In this document, the term 'change in cases' refers to cases publicly reported by the province for a given day. Data corrections or updates can result in case records being removed and or updated from past reports and may result in subset totals for updated case counts (i.e., age group, gender) differing from the overall updated case counts.

The term public health unit reported date in this document refers to the date local public health units were first notified of the case.

## Case Characteristics

**Table 1a. Summary of recent confirmed cases of COVID-19: Ontario**

	Change in cases December 8	Change in cases December 9	Percentage change December 9 compared to December 8	Cumulative case count as of December 9
Total number of cases	1,890	1,983	+4.9%	134,783
Number of deaths	28	35	+25.0%	3,871
Number resolved	1,924	1,804	-6.2%	114,679

**Note:** The number of cases publicly reported by the province each day may not align with case counts reported to public health on a given day; public health unit reported date refers to the date local public health was first notified of the case. Data corrections or updates can result in case records being removed and or updated from past reports.

**Data Source:** CCM plus

**Table 1b. Summary of recent confirmed cases of COVID-19 by age group and gender: Ontario**

	Change in cases December 8	Change in cases December 9	Cumulative case count as of December 9
Gender: Male	980	992	65,891
Gender: Female	923	973	68,086
Ages: 19 and under	264	319	16,705
Ages: 20-39	697	693	49,273
Ages: 40-59	558	597	38,686
Ages: 60-79	263	281	19,456
Ages: 80 and over	106	92	10,641

**Note:** Not all cases have a reported age or gender reported. Data corrections or updates can result in case records being removed and or updated from past reports and may result in subset totals (i.e., age group, gender) differing from past publicly reported case counts.

**Data Source:** CCM plus

**Table 2. Summary of recent confirmed cases of COVID-19 in school aged children by age group, August 30 to December 9, 2020: Ontario**

	Change in cases December 8	Change in cases December 9	Cumulative case count from August 30 to December 9
Ages: 4 to 8	41	49	2,536
Ages: 9 to 13	66	97	3,542
Ages: 14 to 17	66	88	3,450

**Note:** Includes all confirmed cases of COVID-19 for specified ages, regardless of school attendance. Data corrections or updates can result in case records being removed and or updated from past reports and may result in subset totals (i.e., age group) differing from past publicly reported case counts.

**Data Source:** CCM plus

**Table 3. Summary of recent confirmed cases of COVID-19 in long-term care homes: Ontario**

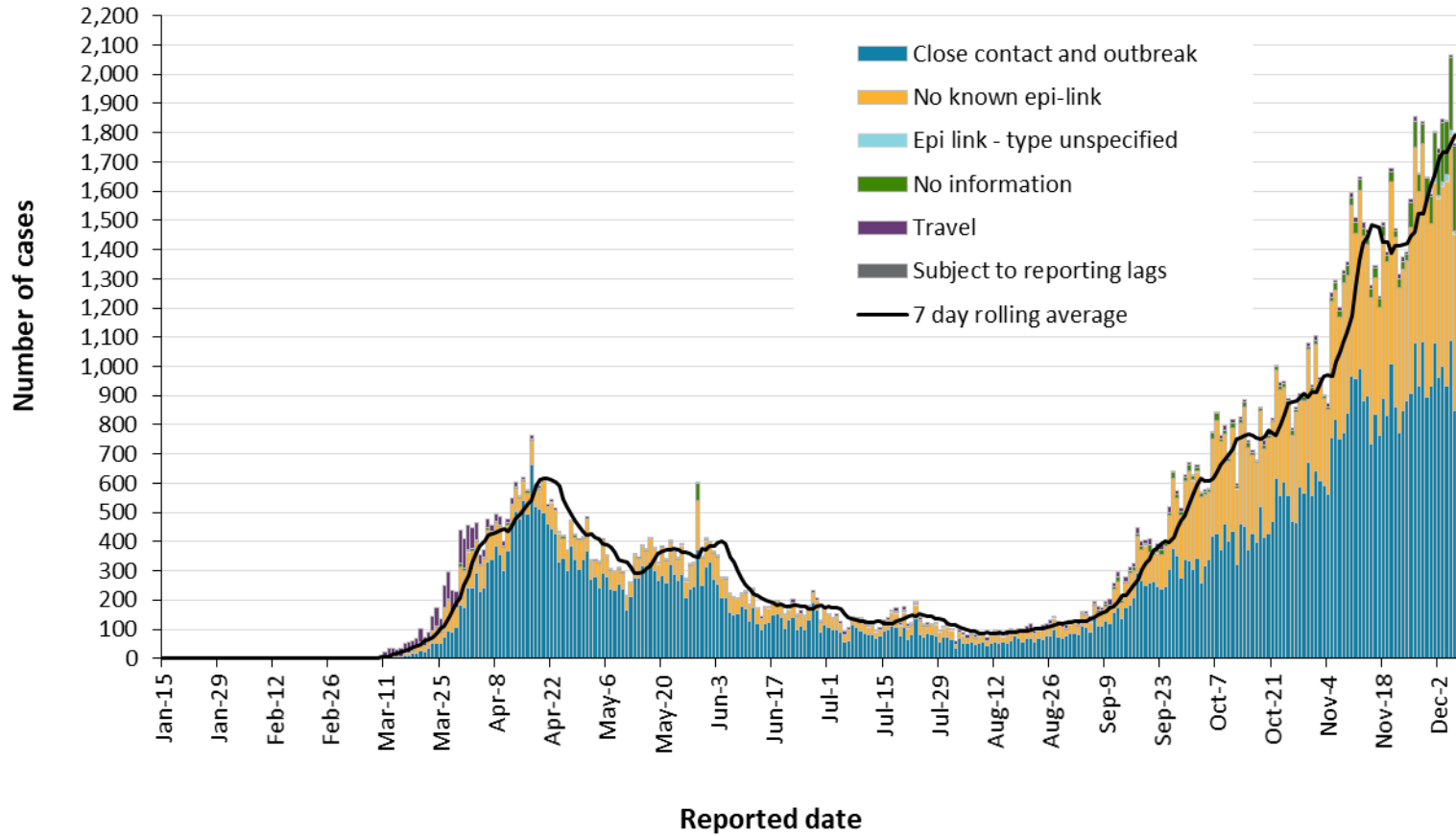
Long-term care home cases	Change in cases December 8	Change in cases December 9	Cumulative case count as of December 9
Residents	41	48	9,093
Health care workers	27	34	3,583
Deaths among residents	11	24	2,431
Deaths among health care workers	0	0	8

**Note:** Information on how long-term care home residents and health care workers are identified is available in the technical notes. Also, the change in cases in these categories may represent existing case records that have been updated.

**Data Source:** CCM plus

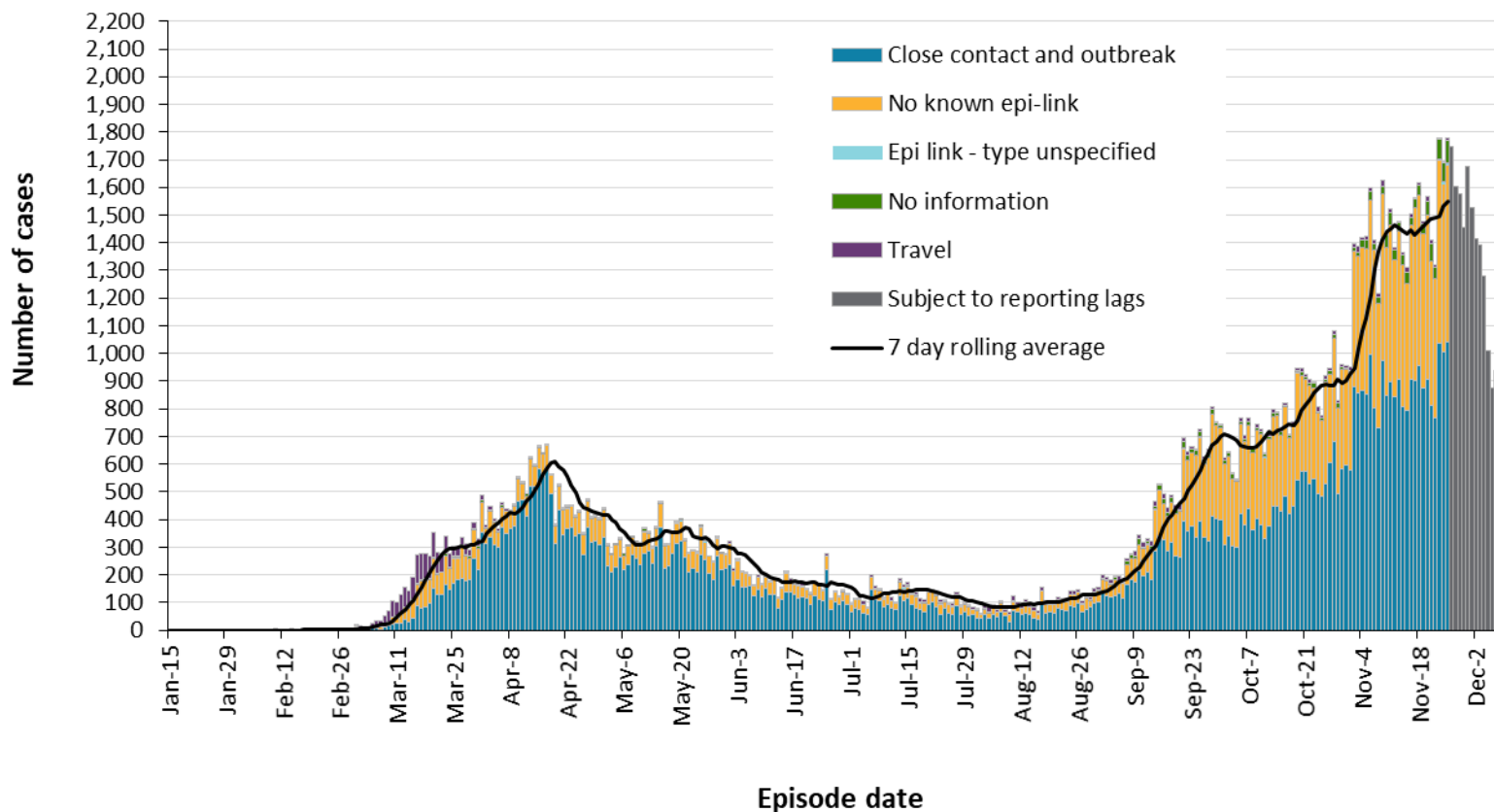
# Time

Figure 1. Confirmed cases of COVID-19 by likely acquisition and public health unit reported date: Ontario, January 15, 2020 to December 9, 2020



Data Source: CCM plus

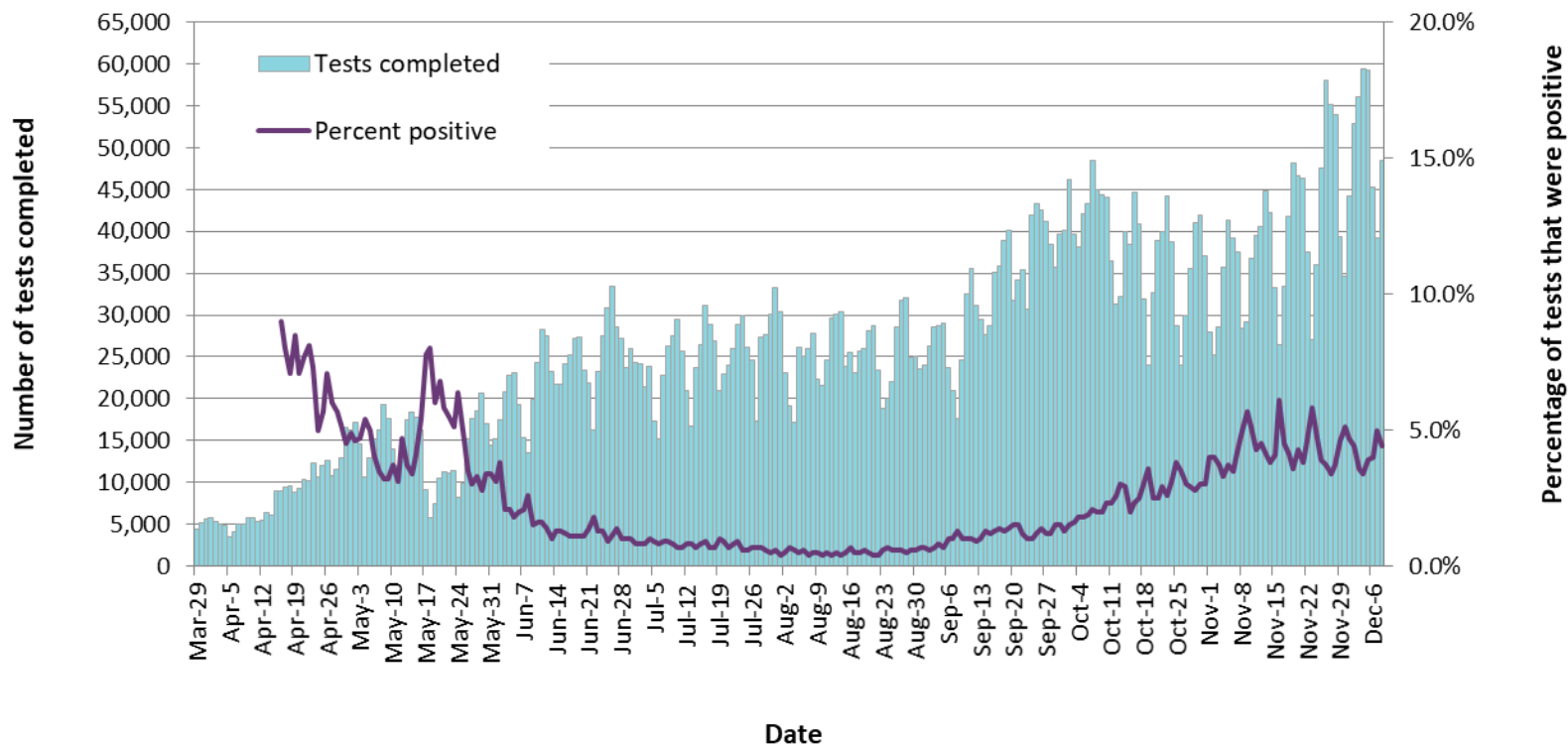
**Figure 2. Confirmed cases of COVID-19 by likely acquisition and approximation of symptom onset date: Ontario, January 15, 2020 to December 9, 2020**



**Note:** Not all cases may have an episode date and those without one are not included in the figure. Episode date is defined and available in the technical notes.

**Data Source:** CCM plus

**Figure 3. Number of COVID-19 tests completed and percent positivity: Ontario, March 29, 2020 to December 8, 2020**

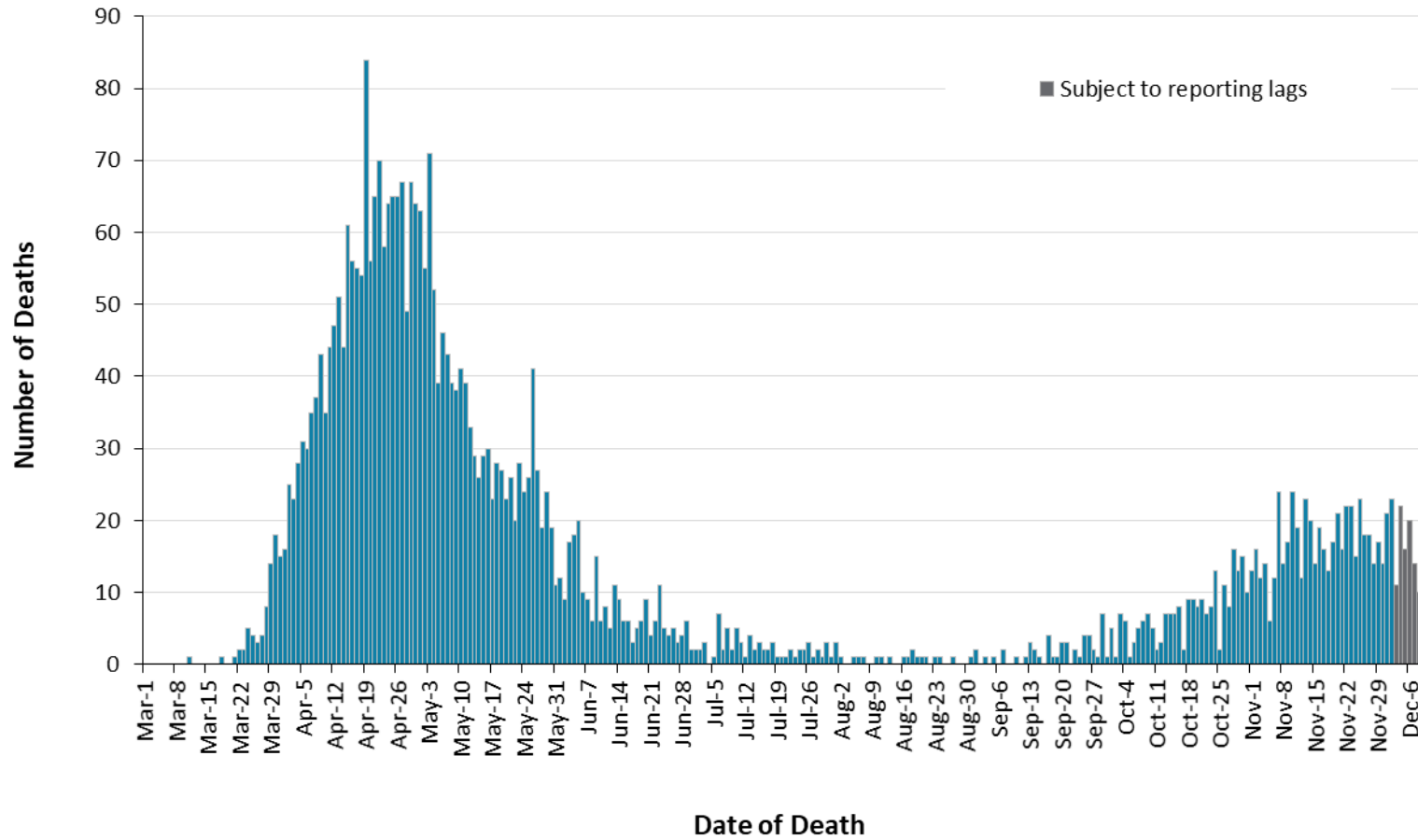


**Note:** The number of tests performed does not reflect the number of specimens or persons tested. More than one test may be performed per specimen or per person. As such, the percentage of tests that were positive does not necessarily translate to the number of specimens or persons testing positive.

**Data Source:** The Provincial COVID-19 Diagnostics Network, data reported by member microbiology laboratories.

## Severity

Figure 4. Confirmed deaths among COVID-19 cases by date of death: Ontario, March 1, 2020 to December 9, 2020



**Note:** Cases without a death date are not included in the figure.

**Data Source:** CCM plus



**Table 4. Confirmed cases of COVID-19 by severity: Ontario**

	Cumulative case count as of December 9	Percentage of all cases
Cumulative deaths reported (please note there may be a reporting delay for deaths)	3,871	2.9%
Deaths reported in ages: 19 and under	1	<0.1%
Deaths reported in ages: 20-39*	14	<0.1%
Deaths reported in ages: 40-59	156	0.4%
Deaths reported in ages: 60-79	1,013	5.2%
Deaths reported in ages: 80 and over	2,687	25.3%
Ever in ICU **	N/A	N/A
Ever hospitalized**	N/A	N/A

**Note:** Not all cases have an age reported. Data corrections or updates can result in case records being removed and/or updated and may result in totals differing from past publicly reported case counts.

**Data Source:** CCM plus

\* One death in the 20-39 age group was recorded at the time the data was extracted from the system. Upon further investigation, it was corrected in CCM and is no longer a death. This will be corrected in tomorrow's report.

\*\* Due to technical issues, information for Hospitalizations and ICU is not available.

## Geography

**Table 5. Summary of recent confirmed cases of COVID-19 by public health unit and region: Ontario**

Public Health Unit Name	Change in cases December 8	Change in cases December 9	Cumulative case count	Cumulative rate per 100,000 population
Northwestern Health Unit	2	1	133	151.7
Thunder Bay District Health Unit	10	13	398	265.4
<b>TOTAL NORTH WEST</b>	12	14	531	223.5
Algoma Public Health	0	0	61	53.3
North Bay Parry Sound District Health Unit	-1	1	89	68.6
Porcupine Health Unit	0	0	116	139.0
Public Health Sudbury & Districts	1	3	239	120.1
Timiskaming Health Unit	1	2	24	73.4
<b>TOTAL NORTH EAST</b>	1	6	529	94.6
Ottawa Public Health	33	56	8,933	847.0
Eastern Ontario Health Unit	8	23	991	474.8
Hastings Prince Edward Public Health	9	6	189	112.2
Kingston, Frontenac and Lennox & Addington Public Health	4	17	328	154.2
Leeds, Grenville & Lanark District Health Unit	7	9	550	317.6
Renfrew County and District Health Unit	7	11	165	151.9
<b>TOTAL EASTERN</b>	68	122	11,156	579.1

Public Health Unit Name	Change in cases December 8	Change in cases December 9	Cumulative case count	Cumulative rate per 100,000 population
Durham Region Health Department	75	55	5,272	740.0
Haliburton, Kawartha, Pine Ridge District Health Unit	8	6	363	192.1
Peel Public Health	471	515	30,074	1872.7
Peterborough Public Health	3	3	234	158.1
Simcoe Muskoka District Health Unit	34	54	2,538	423.3
York Region Public Health	187	208	12,632	1030.5
<b>TOTAL CENTRAL EAST</b>	<b>778</b>	<b>841</b>	<b>51,113</b>	<b>1140.7</b>
Toronto Public Health	517	496	45,169	1447.6
<b>TOTAL TORONTO</b>	<b>517</b>	<b>496</b>	<b>45,169</b>	<b>1447.6</b>
Chatham-Kent Public Health	7	4	541	508.9
Grey Bruce Health Unit	6	6	358	210.7
Huron Perth Public Health	7	3	413	295.5
Lambton Public Health	1	5	439	335.2
Middlesex-London Health Unit	37	61	1,961	386.4
Southwestern Public Health	15	17	676	319.6
Windsor-Essex County Health Unit	94	112	4,316	1015.9
<b>TOTAL SOUTH WEST</b>	<b>167</b>	<b>208</b>	<b>8,704</b>	<b>514.8</b>
Brant County Health Unit	8	11	664	427.8
City of Hamilton Public Health Services	97	75	3,869	653.4

Public Health Unit Name	Change in cases December 8	Change in cases December 9	Cumulative case count	Cumulative rate per 100,000 population
Haldimand-Norfolk Health Unit	14	4	682	597.8
Halton Region Public Health	96	51	4,080	659.0
Niagara Region Public Health	43	35	2,402	508.4
Region of Waterloo Public Health and Emergency Services	64	65	4,206	719.8
Wellington-Dufferin-Guelph Public Health	25	55	1,678	538.0
<b>TOTAL CENTRAL WEST</b>	<b>347</b>	<b>296</b>	<b>17,581</b>	<b>617.0</b>
<b>TOTAL ONTARIO</b>	<b>1,890</b>	<b>1,983</b>	<b>134,783</b>	<b>906.7</b>

**Notes:** Health units with data corrections or updates could result in records being removed from totals resulting in negative counts.

**Data Source:** CCM plus

## Outbreaks

**Table 6. Summary of recent confirmed COVID-19 outbreaks reported in long-term care homes, retirement homes and hospitals by status: Ontario**

Institution type	Change in outbreaks December 8	Change in outbreaks December 9	Number of ongoing outbreaks	Cumulative number of outbreaks reported
Long-term care homes	8	6	130	751
Retirement homes	4	5	76	385
Hospitals	1	3	38	192

**Note:** Ongoing outbreaks includes all outbreaks that are 'Open' in CCM plus without a 'Declared Over Date' recorded.

**Data Source:** CCM plus

# Technical Notes

## Data Sources

- The data for this report were based on:
  - Information extracted from the Ontario Ministry of Health (Ministry) integrated Public Health Information System (iPHIS) database for Toronto Public Health as of **December 9, 2020 at 3 p.m.**
  - Information successfully uploaded to the Ministry from Local Systems: Toronto Public Health (Coronavirus Rapid Entry System) CORES as of **December 9, 2020 at 2 p.m.**
  - Information successfully uploaded to the Ministry from the Public Health Case and Contact Management Solution (CCM) for all other PHUs as of **December 9, 2020 at 11 a.m.**
- CCM and CCM plus (which includes CCM, iPHIS, and CORES) are dynamic disease reporting systems, which allow ongoing updates to data previously entered. As a result, data extracted from CCM and the Local Systems represent a snapshot at the time of extraction and may differ from previous or subsequent reports.
- Ontario population projection data for 2020 were sourced from Ministry, IntelliHEALTH Ontario. Data were extracted on November 26, 2019.
- COVID-19 test data were based on information from The Provincial COVID-19 Diagnostics Network, reported by member microbiology laboratories.

## Data Caveats

- The data only represent cases reported to public health units and recorded in CCM plus. As a result, all counts will be subject to varying degrees of underreporting due to a variety of factors, such as disease awareness and medical care seeking behaviours, which may depend on severity of illness, clinical practice, changes in laboratory testing, and reporting behaviours.
- Lags in CCM plus data entry due to weekend staffing may result in lower case counts than would otherwise be recorded.
- Only cases meeting the confirmed case classification as listed in the MOH [COVID-19 case definition](#) are included in the report counts from CCM plus. This includes persons with a positive detection of serum/plasma immunoglobulin G (IgG) antibodies to SARS-CoV-2, which was added to the confirmed case definition on August 6, 2020.
- The number of tests performed does not reflect the number of specimens or persons tested. More than one test may be performed per specimen or per person. As such, the percentage of tests that were positive does not necessarily translate to the number of specimens or persons testing positive.
- Reported date is the date the case was reported to the public health unit.

- Case episode date is based on an estimate of the best date of disease onset. This date is calculated based on either the date of symptom onset, specimen collection/test date, or the date reported to the public health unit.
- Resolved cases are determined only for COVID-19 cases that have not died. Cases that have died are considered fatal and not resolved. The following cases are classified as resolved:
  - Cases that are reported as 'recovered' in CCM
  - Cases that are not hospitalized and are 14 days past their episode date
  - Cases that are currently hospitalized (no hospital end date entered) and have a status of 'closed' in CCM (indicating public health unit follow-up is complete) and are 14 days past their symptom onset date or specimen collection date
- Hospitalization includes all cases for which a hospital admission date was reported at the time of data extraction. It includes cases that have been discharged from hospital as well as cases that are currently hospitalized. Emergency room visits are not included in the number of reported hospitalizations.
- ICU admission includes all cases for which an ICU admission date was reported at the time of data extraction. It is a subset of the count of hospitalized cases. It includes cases that have been treated or that are currently being treated in an ICU.
- Orientation of case counts by geography is based on the diagnosing health unit (DHU). DHU refers to the case's public health unit of residence at the time of illness onset and not necessarily the location of exposure. Cases for which the DHU was reported as MOH (to signify a case that is not a resident of Ontario) have been excluded from the analyses.
- Likely source of acquisition is determined by examining the epidemiologic link and epidemiologic link status fields in CCM and local systems. If no epidemiologic link is identified in those fields the risk factor fields are examined to determine whether a case travelled, was associated with a confirmed outbreak, was a contact of a case, had no known epidemiological link (sporadic community transmission) or was reported to have an unknown source/no information was reported. Some cases may have no information reported if the case is untraceable, was lost to follow-up or referred to FNIHB. Cases with multiple risk factors were assigned to a single likely acquisition source group which was determined hierarchically in the following order:
  - For cases with an episode date *on or after* April 1, 2020: Outbreak-associated > close contact of a confirmed case > travel > no known epidemiological link > information missing or unknown
  - For cases with an episode date *before* April 1, 2020: Travel > outbreak-associated > close contact of a confirmed case > no known epidemiological link > information missing or unknown
- Deaths are determined by using the outcome field in CCM plus. Any case marked 'Fatal' is included in the deaths data. The CCM field Type of Death is not used to further categorize the data.

- The date of death is determined using the outcome date field for cases marked as 'Fatal' in the outcome field.
- COVID-19 cases from CCM plus for which the Classification and/or Disposition was reported as ENTERED IN ERROR, DOES NOT MEET DEFINITION, IGNORE, DUPLICATE, or any variation on these values have been excluded. The provincial case count for COVID-19 includes cases that are counted once across all systems from which the case data are obtained. Duplicate records may exist if these records were not identified and resolved prior to data upload to the Ministry.
- Ongoing outbreaks are those that are reported in CCM plus as 'Open' without a 'Declared Over Date' recorded.
- 'Long-term care home residents' includes cases that reported 'Yes' to the risk factor 'Resident of a long-term care home'; or 'Yes' to the risk factor 'Resident of nursing home or other chronic care facility' and reported to be part of an outbreak assigned as a long-term care home (via the Outbreak number or case comments field); or were reported to be part of an outbreak assigned as a long-term care home (via the outbreak number or case comments field) with an age over 70 years and did not report 'No' to the risk factors 'Resident of long-term care home' or 'Resident of nursing home or other chronic care facility'. 'Long-term care home residents' excludes cases that reported 'Yes' to any of the health care worker occupational risk factors.
- The 'health care workers' variable includes cases that reported 'Yes' to any of the occupation of health care worker, doctor, nurse, dentist, dental hygienist, midwife, other medical technicians, personal support worker, respiratory therapist, first responder.
- 'Health care workers associated with long-term care outbreaks' includes 'health care workers' reported to be part of an outbreak assigned as a long-term care home (via the outbreak number or case comments field). Excludes cases that reported 'Yes' to risk factors 'Resident of long-term care home' or 'Resident of nursing home or other chronic care facility' and 'Yes' to the calculated 'health care workers' variable.
- Percent change is calculated by taking the difference between the current period (i.e., daily count or sum of the daily count over a 7-day period) and previous period (i.e., daily count or sum of the daily count over a 7-day period), divided by the previous period.



## Appendix A

**Table A1. Weekly rates of confirmed COVID-19 cases per 100,000 population over recent rolling 7-day periods, by reported date and public health unit: Ontario, November 24, 2020 to December 6, 2020**

Public Health Unit Name	Nov 24 to Nov 30	Nov 25 to Dec 01	Nov 26 to Dec 02	Nov 27 to Dec 03	Nov 28 to Dec 04	Nov 29 to Dec 05	Nov 30 to Dec 06	% change from Nov 24-30 to Nov 30-Dec 06
<b>NORTH WEST</b>								
Northwestern Health Unit	14.8	14.8	12.5	11.4	10.3	10.3	10.3	-30.4%
Thunder Bay District Health Unit	44.7	47.3	56.0	61.3	61.3	42.0	41.3	-7.6%
<b>NORTH EAST</b>								
Algoma Public Health	1.7	0.0	0.9	0.9	0.9	0.9	0.9	-47.1%
North Bay Parry Sound District Health Unit	9.2	6.2	7.7	9.2	8.5	6.9	8.5	-7.6%
Porcupine Health Unit	0.0	1.2	3.6	9.6	12.0	12.0	12.0	N/A
Public Health Sudbury & Districts	4.0	3.0	2.5	3.0	3.0	2.5	2.0	-50.0%
Timiskaming Health Unit	0.0	0.0	0.0	0.0	0.0	6.1	9.2	N/A
<b>EASTERN</b>								
Ottawa Public Health	29.4	31.3	32.4	31.2	30.3	29.5	30.3	+3.1%

Public Health Unit Name	Nov 24 to Nov 30	Nov 25 to Dec 01	Nov 26 to Dec 02	Nov 27 to Dec 03	Nov 28 to Dec 04	Nov 29 to Dec 05	Nov 30 to Dec 06	% change from Nov 24-30 to Nov 30-Dec 06
Eastern Ontario Health Unit	35.0	36.9	36.4	44.1	54.6	59.9	56.5	+61.4%
Hastings Prince Edward Public Health	17.8	20.2	20.8	23.7	21.4	22.0	19.6	+10.1%
Kingston, Frontenac and Lennox & Addington Public Health	13.2	13.2	12.7	13.2	17.9	20.7	24.9	+88.6%
Leeds, Grenville & Lanark District Health Unit	7.5	9.8	12.7	14.4	17.9	21.4	22.5	+200.0%
Renfrew County and District Health Unit	1.8	0.9	1.8	2.8	12.9	12.9	15.6	+766.7%
<b>CENTRAL EAST</b>								
Durham Region Health Department	67.1	77.5	74.3	82.8	79.6	84.5	89.6	+33.5%
Haliburton, Kawartha, Pine Ridge District Health Unit	16.4	17.5	17.5	16.4	19.1	18.5	19.6	+19.5%

Public Health Unit Name	Nov 24 to Nov 30	Nov 25 to Dec 01	Nov 26 to Dec 02	Nov 27 to Dec 03	Nov 28 to Dec 04	Nov 29 to Dec 05	Nov 30 to Dec 06	% change from Nov 24-30 to Nov 30-Dec 06
Peel Public Health	189.2	192.5	197.9	195.9	198.1	201.5	205.5	+8.6%
Peterborough Public Health	10.8	12.2	12.8	11.5	10.1	10.8	9.5	-12.0%
Simcoe Muskoka District Health Unit	33.9	36.0	36.5	36.7	40.9	43.5	49.0	+44.5%
York Region Public Health	94.2	101.5	103.9	103.9	107.9	108.4	107.0	+13.6%
<b>TORONTO</b>								
Toronto Public Health	116.3	117.2	118.8	117.4	120.3	121.8	118.9	+2.2%
<b>SOUTH WEST</b>								
Chatham-Kent Public Health	15.0	26.3	28.2	28.2	27.3	29.2	34.8	+132.0%
Grey Bruce Health Unit	28.8	27.1	25.3	23.5	20.6	21.2	18.2	-36.8%
Huron Perth Public Health	43.6	47.9	50.1	47.9	43.6	43.6	41.5	-4.8%
Lambton Public Health	6.9	7.6	9.9	12.2	15.3	15.3	13.7	+98.6%
Middlesex-London Health Unit	26.4	32.9	35.7	39.4	39.4	43.3	48.9	+85.2%
Southwestern Public Health	29.8	36.9	36.9	35.0	38.8	41.6	40.7	+36.6%

Public Health Unit Name	Nov 24 to Nov 30	Nov 25 to Dec 01	Nov 26 to Dec 02	Nov 27 to Dec 03	Nov 28 to Dec 04	Nov 29 to Dec 05	Nov 30 to Dec 06	% change from Nov 24-30 to Nov 30-Dec 06
Windsor-Essex County Health Unit	81.4	80.3	85.2	88.0	91.8	93.9	97.9	+20.3%
<b>CENTRAL WEST</b>								
Brant County Health Unit	35.4	38.7	35.4	34.1	34.1	34.1	34.1	-3.7%
City of Hamilton Public Health Services	81.4	80.0	80.7	80.0	78.0	81.1	80.6	-1.0%
Haldimand-Norfolk Health Unit	28.9	29.8	28.1	21.0	18.4	21.0	22.8	-21.1%
Halton Region Public Health	60.9	66.5	59.9	53.8	60.3	61.5	64.1	+5.3%
Niagara Region Public Health	30.3	30.7	32.6	30.7	31.1	34.5	35.3	+16.5%
Region of Waterloo Public Health and Emergency Services	89.7	93.1	92.9	90.4	78.4	76.0	77.0	-14.2%
Wellington-Dufferin-Guelph Public Health	52.6	54.5	50.7	60.6	58.4	63.2	66.4	+26.2%

Public Health Unit Name	Nov 24 to Nov 30	Nov 25 to Dec 01	Nov 26 to Dec 02	Nov 27 to Dec 03	Nov 28 to Dec 04	Nov 29 to Dec 05	Nov 30 to Dec 06	% change from Nov 24-30 to Nov 30-Dec 06
<b>TOTAL ONTARIO</b>	<b>77.8</b>	<b>80.6</b>	<b>81.7</b>	<b>81.6</b>	<b>82.8</b>	<b>84.4</b>	<b>85.1</b>	<b>+9.4%</b>

**Note:** Rates are based on the sum of the daily case counts during the date ranges specified in each column.

**Data Source:** CCM plus

## Disclaimer

This document was developed by Public Health Ontario (PHO). PHO provides scientific and technical advice to Ontario's government, public health organizations and health care providers. PHO's work is guided by the current best available evidence at the time of publication.

The application and use of this document is the responsibility of the user. PHO assumes no liability resulting from any such application or use.

This document may be reproduced without permission for non-commercial purposes only and provided that appropriate credit is given to PHO. No changes and/or modifications may be made to this document without express written permission from PHO.

## Citation

Ontario Agency for Health Protection and Promotion (Public Health Ontario). Epidemiologic summary: COVID-19 in Ontario – January 15, 2020 to December 9, 2020. Toronto, ON: Queen's Printer for Ontario; 2020.

## For Further Information

For more information, email [cd@oahpp.ca](mailto:cd@oahpp.ca).

## Public Health Ontario

Public Health Ontario is an agency of the Government of Ontario dedicated to protecting and promoting the health of all Ontarians and reducing inequities in health. Public Health Ontario links public health practitioners, front-line health workers and researchers to the best scientific intelligence and knowledge from around the world.

For more information about PHO, visit [publichealthontario.ca](http://publichealthontario.ca).

