

## Daily Epidemiologic Summary

# COVID-19 in Ontario: January 15, 2020 to December 11, 2020

This report includes the most current information available from CCM and other case management systems (CCM plus) as of **December 11, 2020**.

Please visit the interactive [Ontario COVID-19 Data Tool](#) to explore recent COVID-19 data by public health unit, age group, sex, and trends over time.

A weekly summary report is available with additional information to complement the daily report.

This **daily** report provides an epidemiologic summary of recent COVID-19 activity in Ontario. The change in cases is determined by taking the cumulative difference between the current day and the previous day.

## Highlights

- There are a total of 138,504 confirmed cases of COVID-19 in Ontario reported to date.
- Compared to the previous day, this represents:
  - An increase of 1,873 confirmed cases (percent change of +1.4%)
  - An increase of 17 deaths (percent change of -62.2%)
  - An increase of 1,918 resolved cases (percent change of +9.4%)

In this document, the term 'change in cases' refers to cases publicly reported by the province for a given day. Data corrections or updates can result in case records being removed and or updated from past reports and may result in subset totals for updated case counts (i.e., age group, gender) differing from the overall updated case counts.

The term public health unit reported date in this document refers to the date local public health units were first notified of the case.

## Case Characteristics

**Table 1a. Summary of recent confirmed cases of COVID-19: Ontario**

	Change in cases December 10	Change in cases December 11	Percentage change December 11 compared to December 10	Cumulative case count as of December 11
Total number of cases	1,848	1,873	+1.4%	138,504
Number of deaths	45	17	-62.2%	3,933
Number resolved	1,753	1,918	+9.4%	118,350

**Note:** The number of cases publicly reported by the province each day may not align with case counts reported to public health on a given day; public health unit reported date refers to the date local public health was first notified of the case. Data corrections or updates can result in case records being removed and or updated from past reports.

**Data Source:** CCM plus

**Table 1b. Summary of recent confirmed cases of COVID-19 by age group and gender: Ontario**

	Change in cases December 10	Change in cases December 11	Cumulative case count as of December 11
Gender: Male	943	963	67,797
Gender: Female	880	907	69,873
Ages: 19 and under	282	317	17,304
Ages: 20-39	709	687	50,669
Ages: 40-59	515	521	39,722
Ages: 60-79	256	253	19,965
Ages: 80 and over	87	95	10,823

**Note:** Not all cases have a reported age or gender reported. Data corrections or updates can result in case records being removed and or updated from past reports and may result in subset totals (i.e., age group, gender) differing from past publicly reported case counts.

**Data Source:** CCM plus

**Table 2. Summary of recent confirmed cases of COVID-19 in school aged children by age group, August 30 to December 11, 2020: Ontario**

	Change in cases December 10	Change in cases December 11	Cumulative case count from August 30 to December 11
Ages: 4 to 8	52	63	2,651
Ages: 9 to 13	76	89	3,707
Ages: 14 to 17	81	72	3,603

**Note:** Includes all confirmed cases of COVID-19 for specified ages, regardless of school attendance. Data corrections or updates can result in case records being removed and or updated from past reports and may result in subset totals (i.e., age group) differing from past publicly reported case counts.

**Data Source:** CCM plus

**Table 3. Summary of recent confirmed cases of COVID-19 in long-term care homes: Ontario**

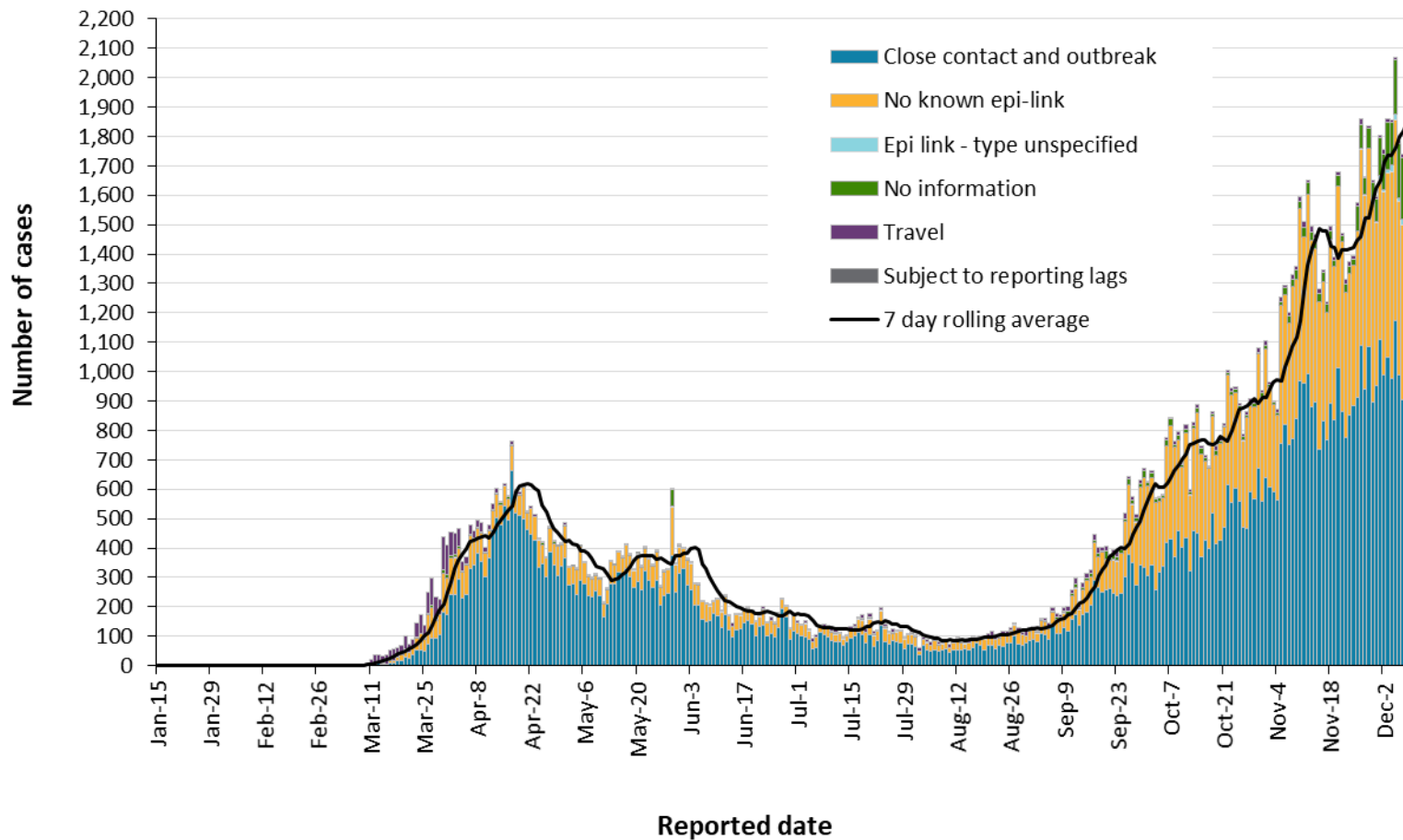
Long-term care home cases	Change in cases December 10	Change in cases December 11	Cumulative case count as of December 11
Residents	63	50	9,206
Health care workers	26	26	3,635
Deaths among residents	29	9	2,469
Deaths among health care workers	0	0	8

**Note:** Information on how long-term care home residents and health care workers are identified is available in the technical notes. Also, the change in cases in these categories may represent existing case records that have been updated.

**Data Source:** CCM plus

# Time

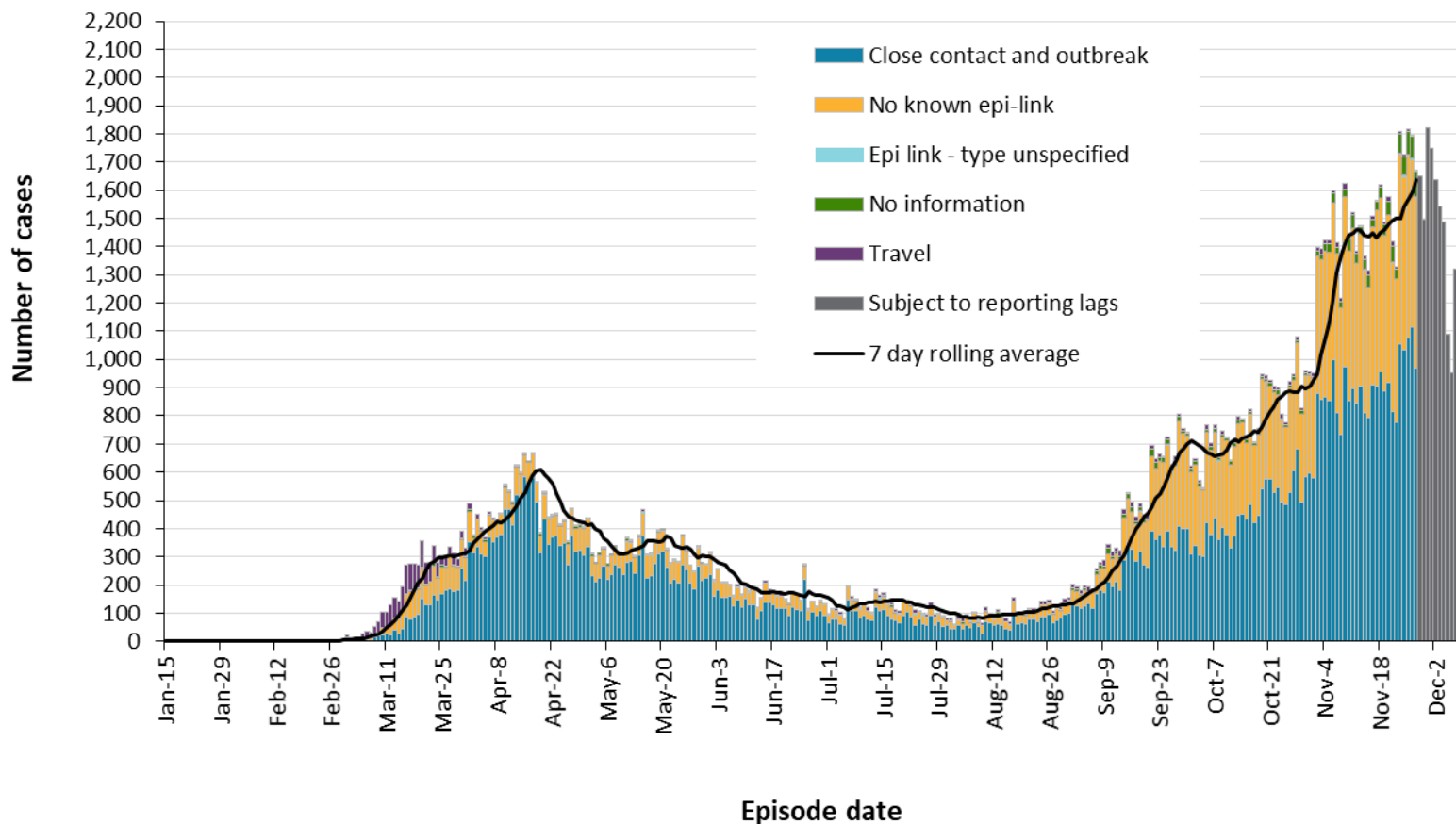
**Figure 1. Confirmed cases of COVID-19 by likely acquisition and public health unit reported date: Ontario, January 15, 2020 to December 11, 2020**



Data Source: CCM plus

COVID-19 in Ontario: January 15, 2020 to December 11, 2020

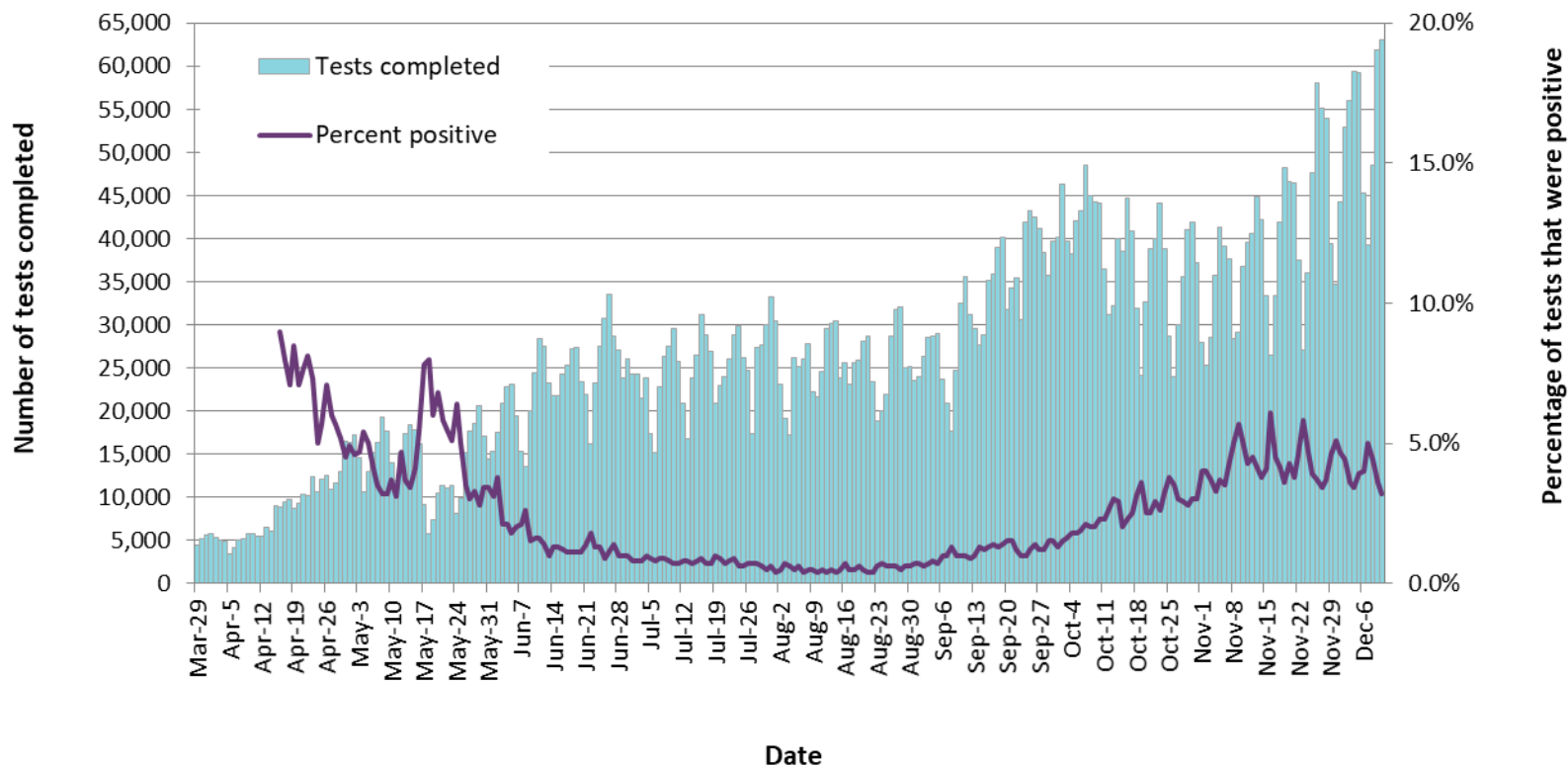
**Figure 2. Confirmed cases of COVID-19 by likely acquisition and approximation of symptom onset date: Ontario, January 15, 2020 to December 11, 2020**



**Note:** Not all cases may have an episode date and those without one are not included in the figure. Episode date is defined and available in the technical notes.

**Data Source:** CCM plus

**Figure 3. Number of COVID-19 tests completed and percent positivity: Ontario, March 29, 2020 to December 10, 2020**

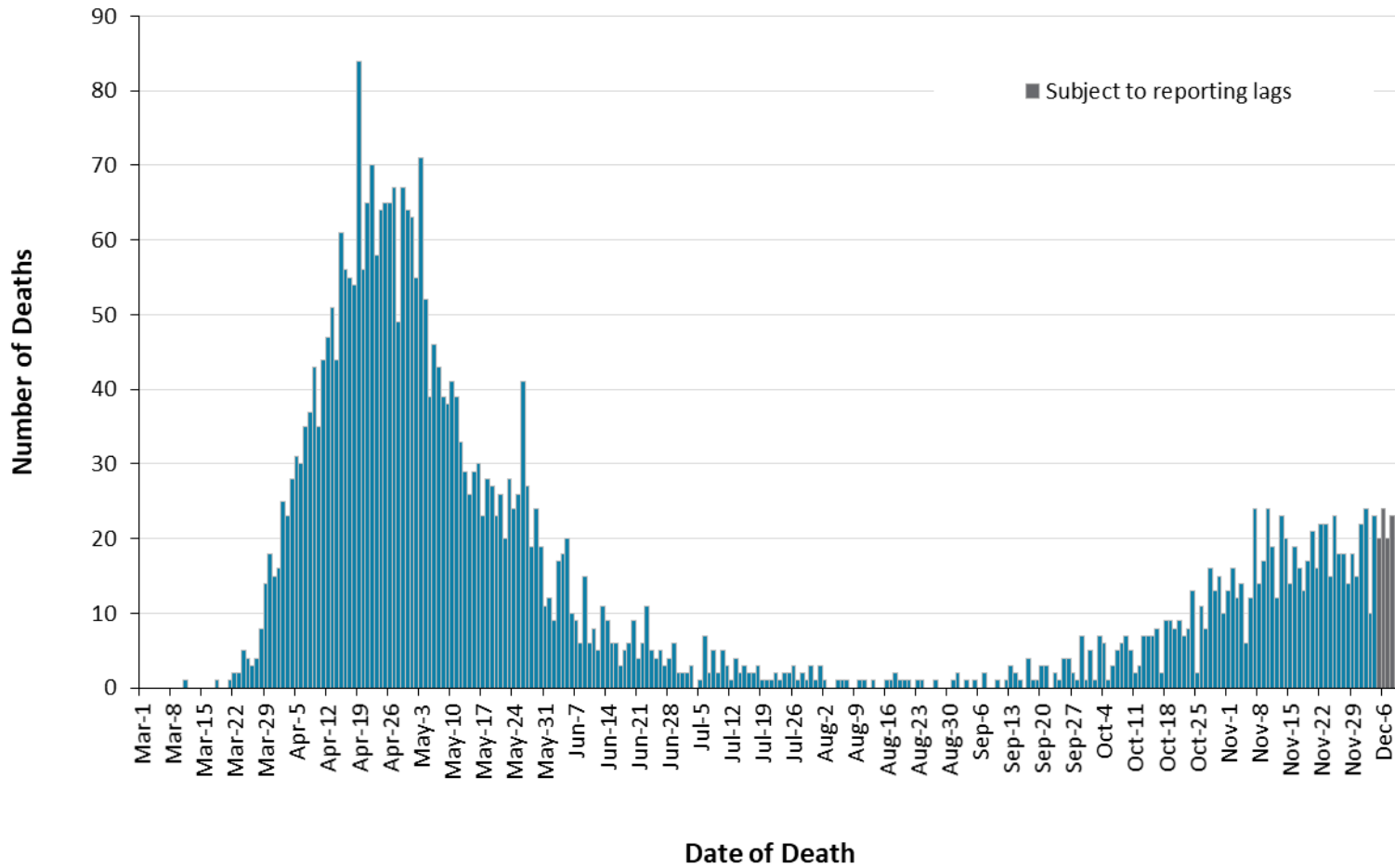


**Note:** The number of tests performed does not reflect the number of specimens or persons tested. More than one test may be performed per specimen or per person. As such, the percentage of tests that were positive does not necessarily translate to the number of specimens or persons testing positive.

**Data Source:** The Provincial COVID-19 Diagnostics Network, data reported by member microbiology laboratories.

# Severity

Figure 4. Confirmed deaths among COVID-19 cases by date of death: Ontario, March 1, 2020 to December 11, 2020



**Note:** Cases without a death date are not included in the figure.

**Data Source:** CCM plus



**Table 4. Confirmed cases of COVID-19 by severity: Ontario**

	Cumulative case count as of December 11	Percentage of all cases
Cumulative deaths reported (please note there may be a reporting delay for deaths)	3,933	2.8%
Deaths reported in ages: 19 and under	1	<0.1%
Deaths reported in ages: 20-39	14	<0.1%
Deaths reported in ages: 40-59	157	0.4%
Deaths reported in ages: 60-79	1,026	5.1%
Deaths reported in ages: 80 and over	2,735	25.3%
Ever in ICU	1,613	1.2%
Ever hospitalized	8,246	6.0%

**Note:** Not all cases have an age reported. Data corrections or updates can result in case records being removed and/or updated and may result in totals differing from past publicly reported case counts.

**Data Source:** CCM plus

## Geography

**Table 5. Summary of recent confirmed cases of COVID-19 by public health unit and region: Ontario**

Public Health Unit Name	Change in cases December 10	Change in cases December 11	Cumulative case count	Cumulative rate per 100,000 population
Northwestern Health Unit	1	0	134	152.8
Thunder Bay District Health Unit	10	13	421	280.7
<b>TOTAL NORTH WEST</b>	<b>11</b>	<b>13</b>	<b>555</b>	<b>233.6</b>
Algoma Public Health	0	1	62	54.2
North Bay Parry Sound District Health Unit	1	0	90	69.4
Porcupine Health Unit	0	0	116	139.0
Public Health Sudbury & Districts	0	3	242	121.6
Timiskaming Health Unit	1	1	26	79.5
<b>TOTAL NORTH EAST</b>	<b>2</b>	<b>5</b>	<b>536</b>	<b>95.8</b>
Ottawa Public Health	59	19	9,011	854.4
Eastern Ontario Health Unit	46	11	1,048	502.1
Hastings Prince Edward Public Health	9	15	213	126.4
Kingston, Frontenac and Lennox & Addington Public Health	13	24	365	171.6
Leeds, Grenville & Lanark District Health Unit	17	10	577	333.2
Renfrew County and District Health Unit	19	10	194	178.6
<b>TOTAL EASTERN</b>	<b>163</b>	<b>89</b>	<b>11,408</b>	<b>592.2</b>

Public Health Unit Name	Change in cases December 10	Change in cases December 11	Cumulative case count	Cumulative rate per 100,000 population
Durham Region Health Department	91	80	5,443	764.0
Haliburton, Kawartha, Pine Ridge District Health Unit	8	12	383	202.7
Peel Public Health	386	436	30,896	1,923.8
Peterborough Public Health	1	3	238	160.8
Simcoe Muskoka District Health Unit	39	31	2,608	435.0
York Region Public Health	205	185	13,022	1,062.3
<b>TOTAL CENTRAL EAST</b>	730	747	52,590	1,173.7
Toronto Public Health	469	522	46,160	1,479.3
<b>TOTAL TORONTO</b>	469	522	46,160	1,479.3
Chatham-Kent Public Health	-1	3	543	510.7
Grey Bruce Health Unit	8	4	370	217.8
Huron Perth Public Health	11	7	431	308.4
Lambton Public Health	6	1	446	340.6
Middlesex-London Health Unit	33	37	2,031	400.2
Southwestern Public Health	19	21	716	338.5
Windsor-Essex County Health Unit	106	81	4,503	1,060.0
<b>TOTAL SOUTH WEST</b>	182	154	9,040	534.7
Brant County Health Unit	11	17	692	445.9
City of Hamilton Public Health Services	58	109	4,036	681.6

Public Health Unit Name	Change in cases December 10	Change in cases December 11	Cumulative case count	Cumulative rate per 100,000 population
Haldimand-Norfolk Health Unit	9	9	700	613.6
Halton Region Public Health	57	47	4,184	675.8
Niagara Region Public Health	25	45	2,472	523.2
Region of Waterloo Public Health and Emergency Services	77	78	4,361	746.3
Wellington-Dufferin-Guelph Public Health	54	38	1,770	567.5
<b>TOTAL CENTRAL WEST</b>	291	343	18,215	639.3
<b>TOTAL ONTARIO</b>	<b>1,848</b>	<b>1,873</b>	<b>138,504</b>	<b>931.8</b>

**Notes:** Health units with data corrections or updates could result in records being removed from totals resulting in negative counts.

**Data Source:** CCM plus

## Outbreaks

**Table 6. Summary of recent confirmed COVID-19 outbreaks reported in long-term care homes, retirement homes and hospitals by status: Ontario**

Institution type	Change in outbreaks December 10	Change in outbreaks December 11	Number of ongoing outbreaks	Cumulative number of outbreaks reported
Long-term care homes	11	10	142	772
Retirement homes	3	8	81	396
Hospitals	1	1	41	194

**Note:** Ongoing outbreaks includes all outbreaks that are 'Open' in CCM plus without a 'Declared Over Date' recorded.

**Data Source:** CCM plus

# Technical Notes

## Data Sources

- The data for this report were based on:
  - Information extracted from the Ontario Ministry of Health (Ministry) integrated Public Health Information System (iPHIS) database for Toronto Public Health as of **December 11, 2020 at 3 p.m.**
  - Information successfully uploaded to the Ministry from Local Systems: Toronto Public Health (Coronavirus Rapid Entry System) CORES as of **December 11, 2020 at 2 p.m.**
  - Information successfully uploaded to the Ministry from the Public Health Case and Contact Management Solution (CCM) for all other PHUs as of **December 11, 2020 at 10:30 a.m.**
- CCM and CCM plus (which includes CCM, iPHIS, and CORES) are dynamic disease reporting systems, which allow ongoing updates to data previously entered. As a result, data extracted from CCM and the Local Systems represent a snapshot at the time of extraction and may differ from previous or subsequent reports.
- Ontario population projection data for 2020 were sourced from Ministry, IntelliHEALTH Ontario. Data were extracted on November 26, 2019.
- COVID-19 test data were based on information from The Provincial COVID-19 Diagnostics Network, reported by member microbiology laboratories.

## Data Caveats

- The data only represent cases reported to public health units and recorded in CCM plus. As a result, all counts will be subject to varying degrees of underreporting due to a variety of factors, such as disease awareness and medical care seeking behaviours, which may depend on severity of illness, clinical practice, changes in laboratory testing, and reporting behaviours.
- Lags in CCM plus data entry due to weekend staffing may result in lower case counts than would otherwise be recorded.
- Only cases meeting the confirmed case classification as listed in the MOH [COVID-19 case definition](#) are included in the report counts from CCM plus. This includes persons with a positive detection of serum/plasma immunoglobulin G (IgG) antibodies to SARS-CoV-2, which was added to the confirmed case definition on August 6, 2020.
- The number of tests performed does not reflect the number of specimens or persons tested. More than one test may be performed per specimen or per person. As such, the percentage of tests that were positive does not necessarily translate to the number of specimens or persons testing positive.
- Reported date is the date the case was reported to the public health unit.

- Case episode date is based on an estimate of the best date of disease onset. This date is calculated based on either the date of symptom onset, specimen collection/test date, or the date reported to the public health unit.
- Resolved cases are determined only for COVID-19 cases that have not died. Cases that have died are considered fatal and not resolved. The following cases are classified as resolved:
  - Cases that are reported as 'recovered' in CCM
  - Cases that are not hospitalized and are 14 days past their episode date
  - Cases that are currently hospitalized (no hospital end date entered) and have a status of 'closed' in CCM (indicating public health unit follow-up is complete) and are 14 days past their symptom onset date or specimen collection date
- Hospitalization includes all cases for which a hospital admission date was reported at the time of data extraction. It includes cases that have been discharged from hospital as well as cases that are currently hospitalized. Emergency room visits are not included in the number of reported hospitalizations.
- ICU admission includes all cases for which an ICU admission date was reported at the time of data extraction. It is a subset of the count of hospitalized cases. It includes cases that have been treated or that are currently being treated in an ICU.
- Orientation of case counts by geography is based on the diagnosing health unit (DHU). DHU refers to the case's public health unit of residence at the time of illness onset and not necessarily the location of exposure. Cases for which the DHU was reported as MOH (to signify a case that is not a resident of Ontario) have been excluded from the analyses.
- Likely source of acquisition is determined by examining the epidemiologic link and epidemiologic link status fields in CCM and local systems. If no epidemiologic link is identified in those fields the risk factor fields are examined to determine whether a case travelled, was associated with a confirmed outbreak, was a contact of a case, had no known epidemiological link (sporadic community transmission) or was reported to have an unknown source/no information was reported. Some cases may have no information reported if the case is untraceable, was lost to follow-up or referred to FNIHB. Cases with multiple risk factors were assigned to a single likely acquisition source group which was determined hierarchically in the following order:
  - For cases with an episode date *on or after* April 1, 2020: Outbreak-associated > close contact of a confirmed case > travel > no known epidemiological link > information missing or unknown
  - For cases with an episode date *before* April 1, 2020: Travel > outbreak-associated > close contact of a confirmed case > no known epidemiological link > information missing or unknown
- Deaths are determined by using the outcome field in CCM plus. Any case marked 'Fatal' is included in the deaths data. The CCM field Type of Death is not used to further categorize the data.

- The date of death is determined using the outcome date field for cases marked as 'Fatal' in the outcome field.
- COVID-19 cases from CCM plus for which the Classification and/or Disposition was reported as ENTERED IN ERROR, DOES NOT MEET DEFINITION, IGNORE, DUPLICATE, or any variation on these values have been excluded. The provincial case count for COVID-19 includes cases that are counted once across all systems from which the case data are obtained. Duplicate records may exist if these records were not identified and resolved prior to data upload to the Ministry.
- Ongoing outbreaks are those that are reported in CCM plus as 'Open' without a 'Declared Over Date' recorded.
- 'Long-term care home residents' includes cases that reported 'Yes' to the risk factor 'Resident of a long-term care home'; or 'Yes' to the risk factor 'Resident of nursing home or other chronic care facility' and reported to be part of an outbreak assigned as a long-term care home (via the Outbreak number or case comments field); or were reported to be part of an outbreak assigned as a long-term care home (via the outbreak number or case comments field) with an age over 70 years and did not report 'No' to the risk factors 'Resident of long-term care home' or 'Resident of nursing home or other chronic care facility'. 'Long-term care home residents' excludes cases that reported 'Yes' to any of the health care worker occupational risk factors.
- The 'health care workers' variable includes cases that reported 'Yes' to any of the occupation of health care worker, doctor, nurse, dentist, dental hygienist, midwife, other medical technicians, personal support worker, respiratory therapist, first responder.
- 'Health care workers associated with long-term care outbreaks' includes 'health care workers' reported to be part of an outbreak assigned as a long-term care home (via the outbreak number or case comments field). Excludes cases that reported 'Yes' to risk factors 'Resident of long-term care home' or 'Resident of nursing home or other chronic care facility' and 'Yes' to the calculated 'health care workers' variable.
- Percent change is calculated by taking the difference between the current period (i.e., daily count or sum of the daily count over a 7-day period) and previous period (i.e., daily count or sum of the daily count over a 7-day period), divided by the previous period.



## Appendix A

**Table A1. Weekly rates of confirmed COVID-19 cases per 100,000 population over recent rolling 7-day periods, by reported date and public health unit: Ontario, November 26, 2020 to December 8, 2020**

Public Health Unit Name	Nov 26 to Dec 2	Nov 27 to Dec 3	Nov 28 to Dec 4	Nov 29 to Dec 5	Nov 30 to Dec 6	Dec 1 to Dec 7	Dec 2 to Dec 8	% change from Nov 26-Dec 2 to Dec 2- 8
<b>NORTH WEST</b>								
Northwestern Health Unit	12.5	11.4	10.3	10.3	10.3	11.4	12.5	0.0%
Thunder Bay District Health Unit	56.0	61.3	61.3	42.0	43.3	41.3	42.7	-23.8%
<b>NORTH EAST</b>								
Algoma Public Health	0.9	0.9	0.9	0.9	0.9	0.9	0.9	0.0%
North Bay Parry Sound District Health Unit	7.7	9.2	8.5	6.9	8.5	8.5	9.2	+19.5%
Porcupine Health Unit	3.6	9.6	12.0	12.0	12.0	12.0	10.8	+200.0%
Public Health Sudbury & Districts	2.5	3.0	3.0	2.5	2.0	3.0	3.5	+40.0%
Timiskaming Health Unit	0.0	0.0	0.0	6.1	9.2	12.2	18.4	N/A
<b>EASTERN</b>								
Ottawa Public Health	32.1	30.6	29.6	28.6	29.5	27.5	29.4	-8.4%

Public Health Unit Name	Nov 26 to Dec 2	Nov 27 to Dec 3	Nov 28 to Dec 4	Nov 29 to Dec 5	Nov 30 to Dec 6	Dec 1 to Dec 7	Dec 2 to Dec 8	% change from Nov 26-Dec 2 to Dec 2- 8
Eastern Ontario Health Unit	36.4	44.1	55.1	60.4	67.1	73.3	69.0	+89.6%
Hastings Prince Edward Public Health	20.8	23.7	21.4	22.6	20.2	20.2	21.4	+2.9%
Kingston, Frontenac and Lennox & Addington Public Health	12.7	13.2	17.9	20.7	24.9	24.4	26.3	+107.1%
Leeds, Grenville & Lanark District Health Unit	12.7	14.4	17.9	21.4	22.5	23.7	30.6	+140.9%
Renfrew County and District Health Unit	1.8	2.8	19.3	19.3	22.1	28.5	33.1	+1,738.9%
<b>CENTRAL EAST</b>								
Durham Region Health Department	74.1	82.7	79.4	84.8	89.7	89.0	82.4	+11.2%
Haliburton, Kawartha, Pine Ridge District Health Unit	17.5	16.4	19.1	18.5	19.1	18.5	17.5	0.0%
Peel Public Health	198.0	195.9	198.0	201.4	205.4	206.7	200.3	+1.2%

Public Health Unit Name	Nov 26 to Dec 2	Nov 27 to Dec 3	Nov 28 to Dec 4	Nov 29 to Dec 5	Nov 30 to Dec 6	Dec 1 to Dec 7	Dec 2 to Dec 8	% change from Nov 26-Dec 2 to Dec 2- 8
Peterborough Public Health	12.8	11.5	10.1	10.8	9.5	10.1	12.2	-4.7%
Simcoe Muskoka District Health Unit	36.5	36.7	40.9	43.7	49.2	52.2	53.5	+46.6%
York Region Public Health	104.3	104.7	108.9	110.1	108.7	107.3	101.6	-2.6%
<b>TORONTO</b>								
Toronto Public Health	119.2	118.0	121.0	122.5	119.5	120.6	123.6	+3.7%
<b>SOUTH WEST</b>								
Chatham-Kent Public Health	28.2	28.2	27.3	29.2	32.9	31.0	18.8	-33.3%
Grey Bruce Health Unit	25.3	23.5	20.6	21.2	18.2	15.9	16.5	-34.8%
Huron Perth Public Health	50.1	50.1	45.8	45.8	44.4	48.7	43.6	-13.0%
Lambton Public Health	9.9	12.2	15.3	15.3	13.7	17.6	16.8	+69.7%
Middlesex-London Health Unit	35.5	39.4	39.4	43.3	48.9	47.3	46.7	+31.5%
Southwestern Public Health	37.4	35.5	39.2	42.1	41.1	43.0	36.4	-2.7%
Windsor-Essex County Health Unit	85.4	88.3	91.8	93.9	97.9	106.6	121.2	+41.9%

Public Health Unit Name	Nov 26 to Dec 2	Nov 27 to Dec 3	Nov 28 to Dec 4	Nov 29 to Dec 5	Nov 30 to Dec 6	Dec 1 to Dec 7	Dec 2 to Dec 8	% change from Nov 26-Dec 2 to Dec 2- 8
<b>CENTRAL WEST</b>								
Brant County Health Unit	35.4	34.1	34.1	34.1	34.1	30.3	28.3	-20.1%
City of Hamilton Public Health Services	80.7	80.0	78.2	80.6	80.2	85.1	87.6	+8.6%
Haldimand-Norfolk Health Unit	28.1	21.0	18.4	21.9	24.5	25.4	32.4	+15.3%
Halton Region Public Health	59.9	53.8	60.1	61.2	63.8	65.4	71.6	+19.5%
Niagara Region Public Health	32.6	30.7	31.1	34.5	35.3	38.9	39.4	+20.9%
Region of Waterloo Public Health and Emergency Services	92.9	90.4	78.5	76.2	77.2	77.2	69.6	-25.1%
Wellington-Dufferin-Guelph Public Health	51.0	60.9	58.7	63.5	66.7	68.0	77.9	+52.7%
<b>TOTAL ONTARIO</b>	<b>81.8</b>	<b>81.8</b>	<b>83.1</b>	<b>84.7</b>	<b>85.6</b>	<b>86.6</b>	<b>86.5</b>	<b>+5.7%</b>

**Note:** Rates are based on the sum of the daily case counts during the date ranges specified in each column.

**Data Source:** CCM plus

## Disclaimer

This document was developed by Public Health Ontario (PHO). PHO provides scientific and technical advice to Ontario's government, public health organizations and health care providers. PHO's work is guided by the current best available evidence at the time of publication.

The application and use of this document is the responsibility of the user. PHO assumes no liability resulting from any such application or use.

This document may be reproduced without permission for non-commercial purposes only and provided that appropriate credit is given to PHO. No changes and/or modifications may be made to this document without express written permission from PHO.

## Citation

Ontario Agency for Health Protection and Promotion (Public Health Ontario). Epidemiologic summary: COVID-19 in Ontario – January 15, 2020 to December 11, 2020. Toronto, ON: Queen's Printer for Ontario; 2020.

## For Further Information

For more information, email [cd@oahpp.ca](mailto:cd@oahpp.ca).

## Public Health Ontario

Public Health Ontario is an agency of the Government of Ontario dedicated to protecting and promoting the health of all Ontarians and reducing inequities in health. Public Health Ontario links public health practitioners, front-line health workers and researchers to the best scientific intelligence and knowledge from around the world.

For more information about PHO, visit [publichealthontario.ca](http://publichealthontario.ca).

