

Daily Epidemiologic Summary

COVID-19 in Ontario: January 15, 2020 to January 2, 2021

This report includes the most current information available from CCM and other case management systems (CCM plus) as of **January 2, 2021**.

Please visit the interactive [Ontario COVID-19 Data Tool](#) to explore recent COVID-19 data by public health unit, age group, sex, and trends over time.

A weekly summary report is available with additional information to complement the daily report.

This **daily** report provides an epidemiologic summary of recent COVID-19 activity in Ontario. The change in cases is determined by taking the cumulative difference between the current day and the previous day.

Highlights

- There are a total of 190,962 confirmed cases of COVID-19 in Ontario reported to date.
- Compared to the previous day, this represents:
 - An increase of 2,964 confirmed cases (percent change of -11.9%)
 - An increase of 25 deaths (percent change of -43.2%)
 - An increase of 2,175 resolved cases (percent change of +5.9%)

In this document, the term 'change in cases' refers to cases publicly reported by the province for a given day. Data corrections or updates can result in case records being removed and or updated from past reports and may result in subset totals for updated case counts (i.e., age group, gender) differing from the overall updated case counts.

The term public health unit reported date in this document refers to the date local public health units were first notified of the case.

Case Characteristics

Table 1a. Summary of recent confirmed cases of COVID-19: Ontario

	Change in cases January 1, 2021	Change in cases January 2, 2021	Percentage change January 2, 2021 compared to January 1, 2021	Cumulative case count as of January 2, 2021
Total number of cases	3,363	2,964	-11.9%	190,962
Number of deaths	44	25	-43.2%	4,650
Number resolved	2,054	2,175	+5.9%	162,701

Note: The number of cases publicly reported by the province each day may not align with case counts reported to public health on a given day; public health unit reported date refers to the date local public health was first notified of the case. Data corrections or updates can result in case records being removed and or updated from past reports.

Data Source: CCM plus

Table 1b. Summary of recent confirmed cases of COVID-19 by age group and gender: Ontario

	Change in cases January 1, 2021	Change in cases January 2, 2021	Cumulative case count as of January 2, 2021
Gender: Male	1,622	1,406	93,434
Gender: Female	1,758	1,523	96,342
Ages: 19 and under	440	385	24,713
Ages: 20-39	1,258	1,095	69,474
Ages: 40-59	970	900	55,118
Ages: 60-79	499	420	27,617
Ages: 80 and over	196	160	13,991

Note: Not all cases have a reported age or gender reported. Data corrections or updates can result in case records being removed and or updated from past reports and may result in subset totals (i.e., age group, gender) differing from past publicly reported case counts.

Data Source: CCM plus

Table 2. Summary of recent confirmed cases of COVID-19 in school aged children by age group, August 30, 2020 to January 2, 2021: Ontario

	Change in cases January 1, 2021	Change in cases January 2, 2021	Cumulative case count from August 30, 2020 to January 2, 2021
Ages: 4 to 8	63	65	3,959
Ages: 9 to 13	113	96	5,603
Ages: 14 to 17	122	114	5,551

Note: Includes all confirmed cases of COVID-19 for specified ages, regardless of school attendance. Data corrections or updates can result in case records being removed and or updated from past reports and may result in subset totals (i.e., age group) differing from past publicly reported case counts.

Data Source: CCM plus

Table 3. Summary of recent confirmed cases of COVID-19 in long-term care homes: Ontario

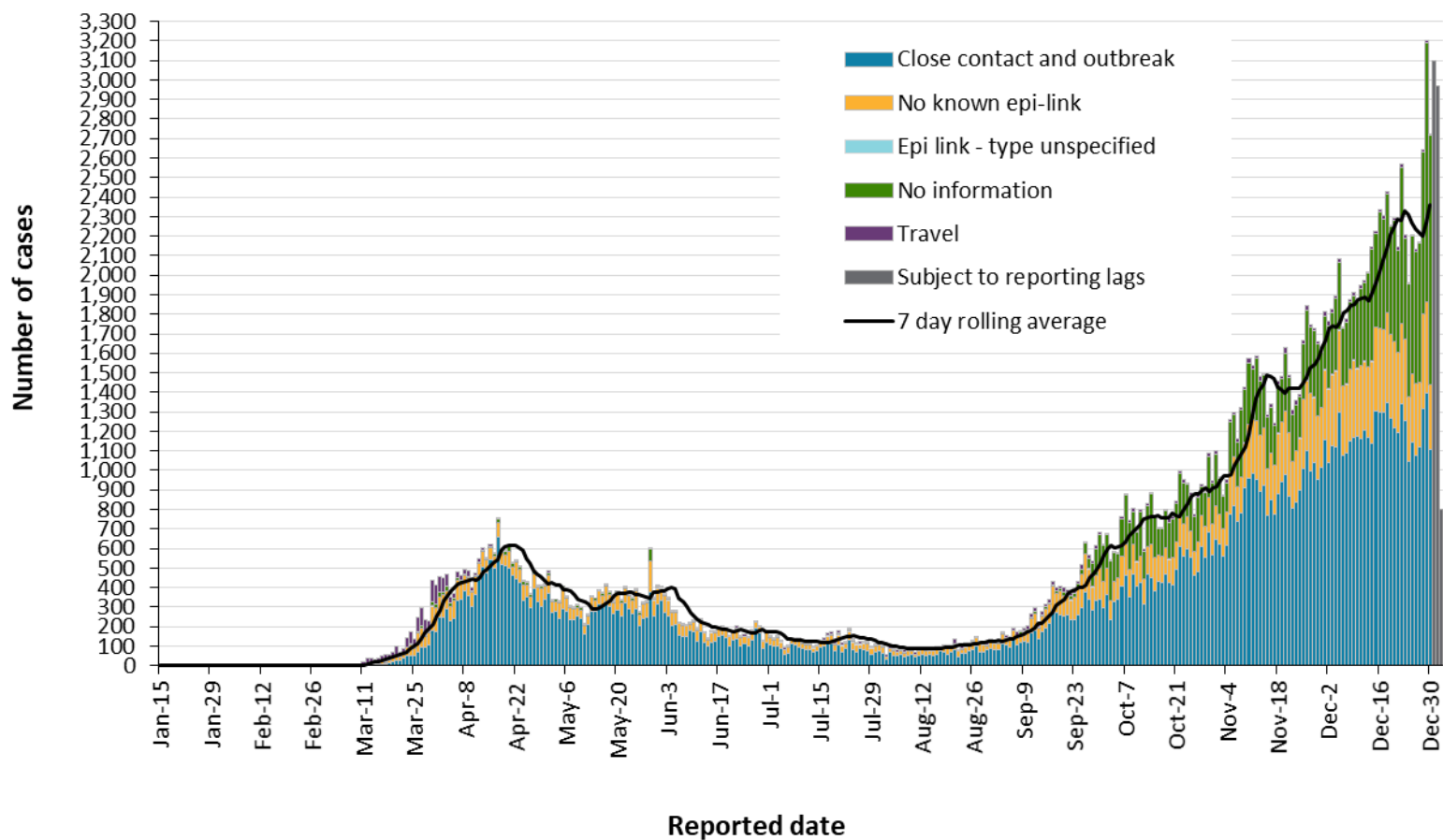
Long-term care home cases	Change in cases January 1, 2021	Change in cases January 2, 2021	Cumulative case count as of January 2, 2021
Residents	74	76	11,293
Health care workers	36	32	4,397
Deaths among residents	14	15	2,829
Deaths among health care workers	0	0	8

Note: Information on how long-term care home residents and health care workers are identified is available in the technical notes. Also, the change in cases in these categories may represent existing case records that have been updated.

Data Source: CCM plus

Time

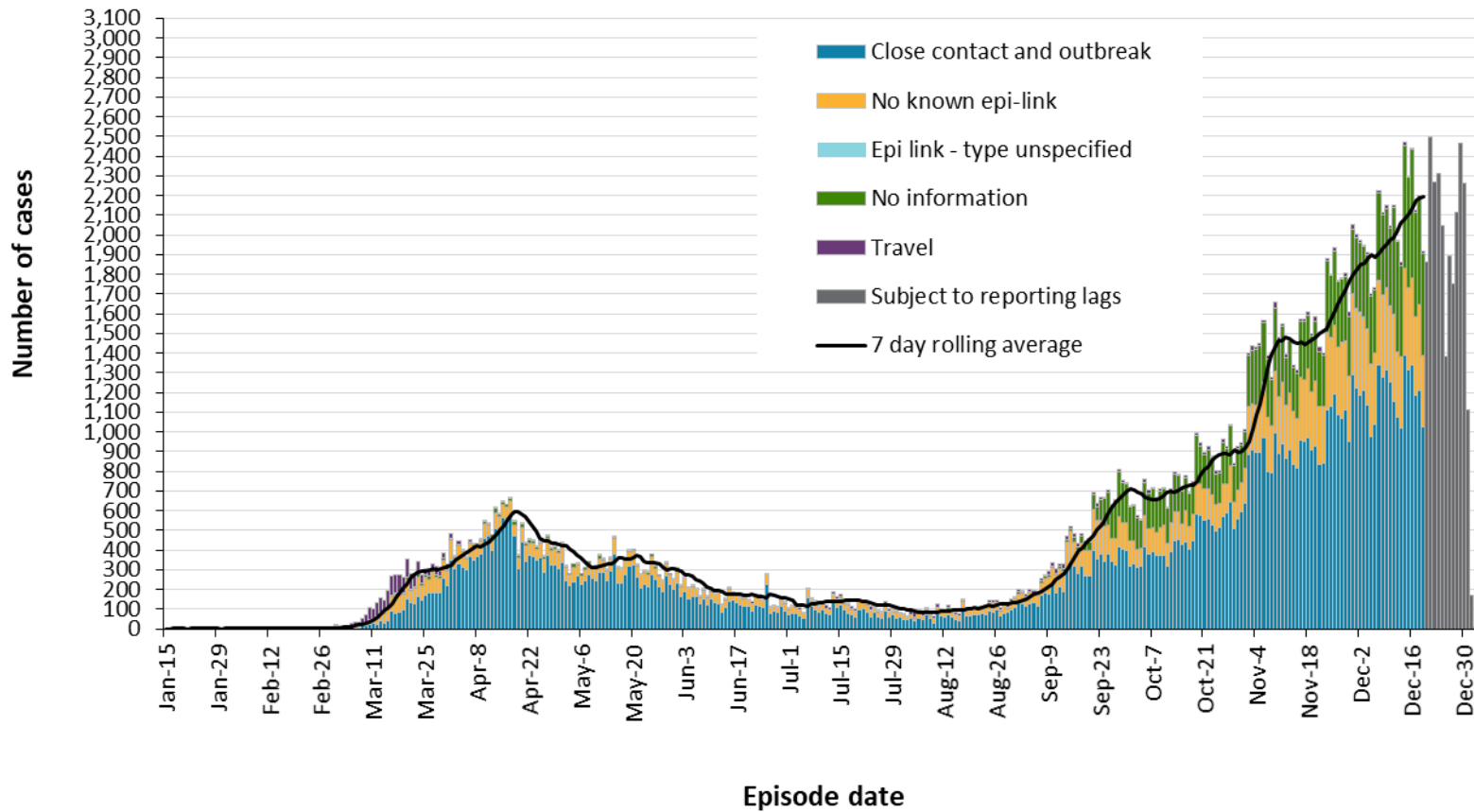
Figure 1. Confirmed cases of COVID-19 by likely acquisition and public health unit reported date: Ontario, January 15, 2020 to January 2, 2021



Data Source: CCM plus

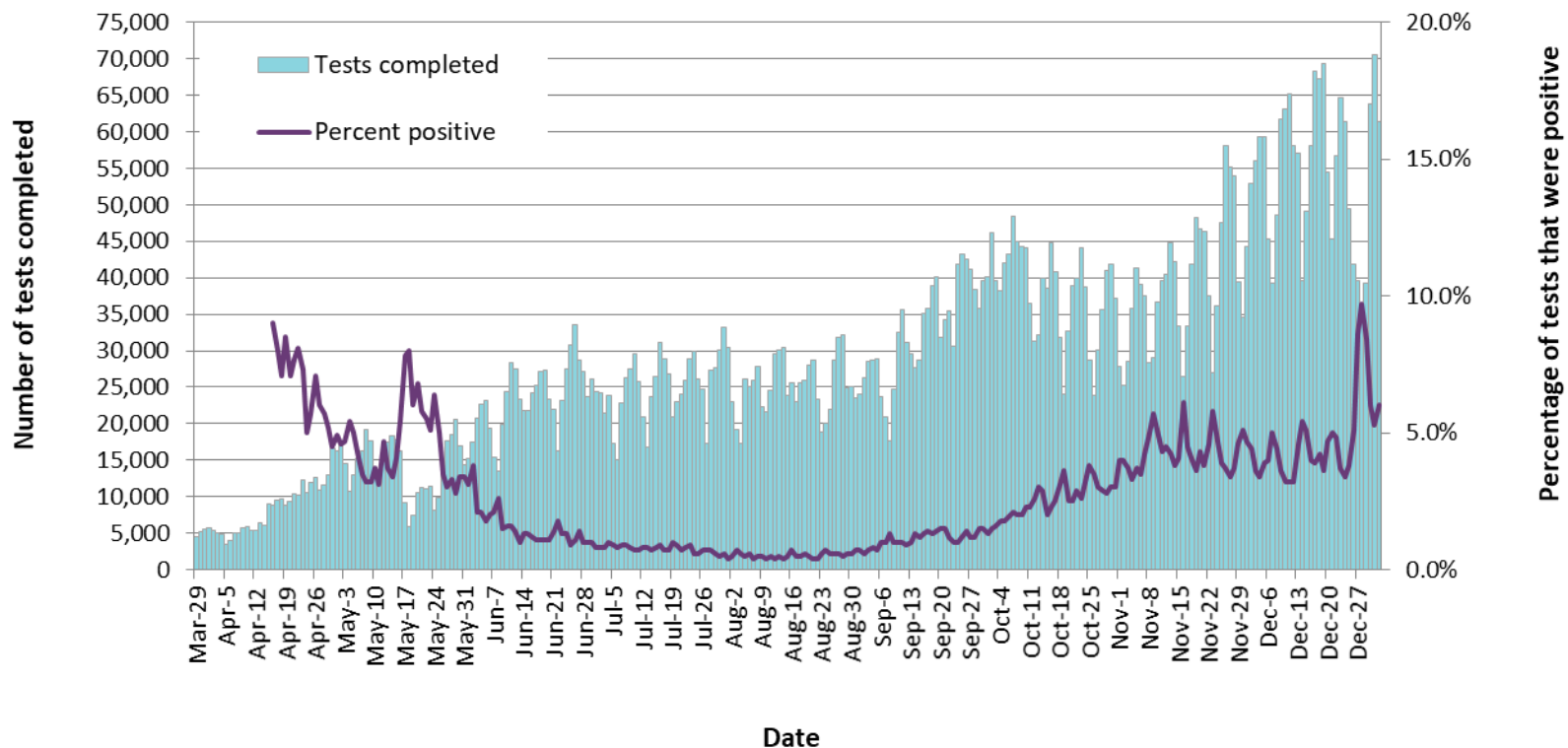
COVID-19 in Ontario: January 15, 2020 to January 2, 2021

Figure 2. Confirmed cases of COVID-19 by likely acquisition and approximation of symptom onset date: Ontario, January 15, 2020 to January 2, 2021



Note: Not all cases may have an episode date and those without one are not included in the figure. Episode date is defined and available in the technical notes.
Data Source: CCM plus

Figure 3. Number of COVID-19 tests completed and percent positivity: Ontario, March 29, 2020 to January 1, 2021

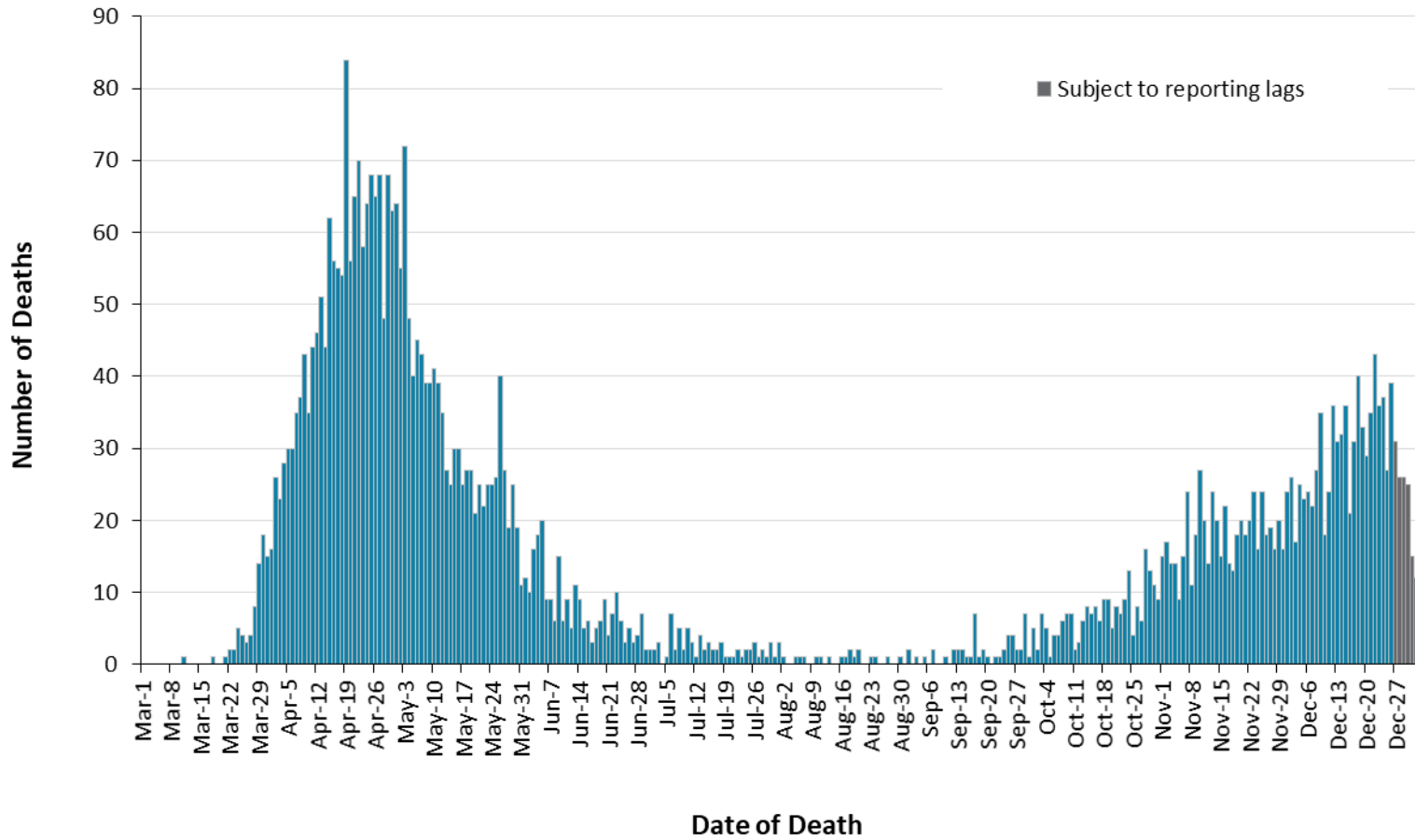


Note: The number of tests performed does not reflect the number of specimens or persons tested. More than one test may be performed per specimen or per person. As such, the percentage of tests that were positive does not necessarily translate to the number of specimens or persons testing positive.

Data Source: The Provincial COVID-19 Diagnostics Network, data reported by member microbiology laboratories.

Severity

Figure 4. Confirmed deaths among COVID-19 cases by date of death: Ontario, March 1, 2020 to January 2, 2021



Note: Cases without a death date are not included in the figure.

Data Source: CCM plus

Table 4. Confirmed cases of COVID-19 by severity: Ontario

Blank cell	Cumulative case count as of January 2, 2021	Percentage of all cases
Cumulative deaths reported (please note there may be a reporting delay for deaths)	4,650	2.4%
Deaths reported in ages: 19 and under	1	<0.1%
Deaths reported in ages: 20-39	20	<0.1%
Deaths reported in ages: 40-59	177	0.3%
Deaths reported in ages: 60-79	1,236	4.5%
Deaths reported in ages: 80 and over	3,215	23.0%
Ever in ICU	1,981	1.0%
Ever hospitalized	10,021	5.2%

Note: Not all cases have an age reported. Data corrections or updates can result in case records being removed and/or updated and may result in totals differing from past publicly reported case counts.

Data Source: CCM plus

Geography

Table 5. Summary of recent confirmed cases of COVID-19 by public health unit and region: Ontario

Public Health Unit Name	Change in cases January 1, 2021	Change in cases January 2, 2021	Cumulative case count	Cumulative rate per 100,000 population
Northwestern Health Unit	5	5	177	201.9
Thunder Bay District Health Unit	4	5	593	395.4
TOTAL NORTH WEST	9	10	770	324.0
Algoma Public Health	9	2	77	67.3
North Bay Parry Sound District Health Unit	2	3	135	104.0
Porcupine Health Unit	-1	1	131	157.0
Public Health Sudbury & Districts	3	4	284	142.7
Timiskaming Health Unit	1	6	79	241.7
TOTAL NORTH EAST	14	16	706	126.2
Ottawa Public Health	81	100	10,341	980.5
Eastern Ontario Health Unit	53	45	1,517	726.8
Hastings Prince Edward Public Health	14	1	294	174.5
Kingston, Frontenac and Lennox & Addington Public Health	8	4	551	259.0
Leeds, Grenville & Lanark District Health Unit	12	5	699	403.6
Renfrew County and District Health Unit	-1	2	240	220.9

Public Health Unit Name	Change in cases January 1, 2021	Change in cases January 2, 2021	Cumulative case count	Cumulative rate per 100,000 population
TOTAL EASTERN	167	157	13,642	708.2
Durham Region Health Department	115	197	7,716	1,083.1
Haliburton, Kawartha, Pine Ridge District Health Unit	20	14	558	295.3
Peel Public Health	713	346	40,843	2,543.2
Peterborough Public Health	20	18	382	258.1
Simcoe Muskoka District Health Unit	58	58	3,757	626.6
York Region Public Health	395	308	18,337	1,495.9
TOTAL CENTRAL EAST	1,321	941	71,593	1,597.8
Toronto Public Health	700	786	60,659	1,944.0
TOTAL TORONTO	700	786	60,659	1,944.0
Chatham-Kent Public Health	9	19	734	690.4
Grey Bruce Health Unit	11	15	480	282.5
Huron Perth Public Health	22	27	738	528.1
Lambton Public Health	70	55	911	695.6
Middlesex-London Health Unit	94	79	3,449	679.6
Southwestern Public Health	56	29	1,464	692.2
Windsor-Essex County Health Unit	226	187	8,140	1,916.1
TOTAL SOUTH WEST	488	411	15,916	941.3
Brant County Health Unit	26	18	1,044	672.7

Public Health Unit Name	Change in cases January 1, 2021	Change in cases January 2, 2021	Cumulative case count	Cumulative rate per 100,000 population
City of Hamilton Public Health Services	171	172	6,472	1,092.9
Haldimand-Norfolk Health Unit	36	30	969	849.4
Halton Region Public Health	152	100	5,980	965.9
Niagara Region Public Health	166	113	4,317	913.7
Region of Waterloo Public Health and Emergency Services	58	157	6,133	1,049.5
Wellington-Dufferin-Guelph Public Health	55	53	2,761	885.2
TOTAL CENTRAL WEST	664	643	27,676	971.3
TOTAL ONTARIO	3,363	2,964	190,962	1,284.7

Notes: Health units with data corrections or updates could result in records being removed from totals resulting in negative counts.

Data Source: CCM plus

Outbreaks

Table 6. Summary of recent confirmed COVID-19 outbreaks reported in long-term care homes, retirement homes and hospitals by status: Ontario

Institution type	Change in outbreaks January 1, 2021	Change in outbreaks January 2, 2021	Number of ongoing outbreaks	Cumulative number of outbreaks reported
Long-term care homes	15	15	228	953
Retirement homes	3	13	129	506
Hospitals	4	6	60	252

Note: Ongoing outbreaks include all outbreaks that are 'Open' in CCM plus without a 'Declared Over Date' recorded, or where the outbreak started more than five months ago, even for outbreaks where the Outbreak Status value selected in CCM/iPHIS is 'OPEN'. The start of the outbreak is determined by the onset date of first case, or if missing the outbreak reported date, or else if that is also missing, then the outbreak created date.

Data Source: CCM plus

Technical Notes

Data Sources

- The data for this report were based on:
 - Information extracted from the Ontario Ministry of Health (Ministry) integrated Public Health Information System (iPHIS) database for Toronto Public Health as of **January 2, 2021 at 1 p.m.**
 - Information successfully uploaded to the Ministry from Local Systems: Toronto Public Health (Coronavirus Rapid Entry System) CORES as of **January 2, 2021 at 2 p.m.**
 - Information successfully extracted from the Public Health Case and Contact Management Solution (CCM) for all other PHUs by PHO as of **January 2, 2021 at 1 p.m.**
- CCM and CCM plus (which includes CCM, iPHIS, and CORES) are dynamic disease reporting systems, which allow ongoing updates to data previously entered. As a result, data extracted from CCM and the Local Systems represent a snapshot at the time of extraction and may differ from previous or subsequent reports.
- Ontario population projection data for 2020 were sourced from Ministry, IntelliHEALTH Ontario. Data were extracted on November 26, 2019.
- COVID-19 test data were based on information from The Provincial COVID-19 Diagnostics Network, reported by member microbiology laboratories.

Data Caveats

- The data only represent cases reported to public health units and recorded in CCM plus. As a result, all counts will be subject to varying degrees of underreporting due to a variety of factors, such as disease awareness and medical care seeking behaviours, which may depend on severity of illness, clinical practice, changes in laboratory testing, and reporting behaviours.
- Lags in CCM plus data entry due to weekend staffing may result in lower case counts than would otherwise be recorded.
- Only cases meeting the confirmed case classification as listed in the MOH [COVID-19 case definition](#) are included in the report counts from CCM plus. This includes persons with a positive detection of serum/plasma immunoglobulin G (IgG) antibodies to SARS-CoV-2, which was added to the confirmed case definition on August 6, 2020.
- The number of tests performed does not reflect the number of specimens or persons tested. More than one test may be performed per specimen or per person. As such, the percentage of tests that were positive does not necessarily translate to the number of specimens or persons testing positive.
- Reported date is the date the case was reported to the public health unit.

- Case episode date is based on an estimate of the best date of disease onset. This date is calculated based on either the date of symptom onset, specimen collection/test date, or the date reported to the public health unit.
- Resolved cases are determined only for COVID-19 cases that have not died. Cases that have died are considered fatal and not resolved. The following cases are classified as resolved:
 - Cases that are reported as 'recovered' in CCM
 - Cases that are not hospitalized and are 14 days past their episode date
 - Cases that are currently hospitalized (no hospital end date entered) and have a status of 'closed' in CCM (indicating public health unit follow-up is complete) and are 14 days past their symptom onset date or specimen collection date
- Hospitalization includes all cases for which a hospital admission date was reported at the time of data extraction. It includes cases that have been discharged from hospital as well as cases that are currently hospitalized. Emergency room visits are not included in the number of reported hospitalizations.
- ICU admission includes all cases for which an ICU admission date was reported at the time of data extraction. It is a subset of the count of hospitalized cases. It includes cases that have been treated or that are currently being treated in an ICU.
- Orientation of case counts by geography is based on the diagnosing health unit (DHU). DHU refers to the case's public health unit of residence at the time of illness onset and not necessarily the location of exposure. Cases for which the DHU was reported as MOH (to signify a case that is not a resident of Ontario) have been excluded from the analyses.
- Likely source of acquisition is determined by examining the epidemiologic link and epidemiologic link status fields in CCM and local systems. If no epidemiologic link is identified in those fields the risk factor fields are examined to determine whether a case travelled, was associated with a confirmed outbreak, was a contact of a case, had no known epidemiological link (sporadic community transmission) or was reported to have an unknown source/no information was reported. Some cases may have no information reported if the case is untraceable, was lost to follow-up or referred to FNIHB. Cases with multiple risk factors were assigned to a single likely acquisition source group which was determined hierarchically in the following order:
 - For cases with an episode date *on or after* April 1, 2020: Outbreak-associated > close contact of a confirmed case > travel > no known epidemiological link > information missing or unknown
 - For cases with an episode date *before* April 1, 2020: Travel > outbreak-associated > close contact of a confirmed case > no known epidemiological link > information missing or unknown
- Deaths are determined by using the outcome field in CCM plus. Any case marked 'Fatal' is included in the deaths data. The CCM field Type of Death is not used to further categorize the data.

- The date of death is determined using the outcome date field for cases marked as 'Fatal' in the outcome field.
- COVID-19 cases from CCM plus for which the Classification and/or Disposition was reported as ENTERED IN ERROR, DOES NOT MEET DEFINITION, IGNORE, DUPLICATE, or any variation on these values have been excluded. The provincial case count for COVID-19 includes cases that are counted once across all systems from which the case data are obtained. Duplicate records may exist if these records were not identified and resolved prior to data upload to the Ministry.
- Ongoing outbreaks include all outbreaks that are 'Open' in CCM plus without a 'Declared Over Date' recorded, or where the outbreak started more than five months ago, even for outbreaks where the Outbreak Status value selected in CCM/iPHIS is 'OPEN'. The start of the outbreak is determined by the onset date of first case, or if missing the outbreak reported date, or else if that is also missing, then the outbreak created date.
- 'Long-term care home residents' includes cases that reported 'Yes' to the risk factor 'Resident of a long-term care home'; or 'Yes' to the risk factor 'Resident of nursing home or other chronic care facility' and reported to be part of an outbreak assigned as a long-term care home (via the Outbreak number or case comments field); or were reported to be part of an outbreak assigned as a long-term care home (via the outbreak number or case comments field) with an age over 70 years and did not report 'No' to the risk factors 'Resident of long-term care home' or 'Resident of nursing home or other chronic care facility'. 'Long-term care home residents' excludes cases that reported 'Yes' to any of the health care worker occupational risk factors.
- The 'health care workers' variable includes cases that reported 'Yes' to any of the occupation of health care worker, doctor, nurse, dentist, dental hygienist, midwife, other medical technicians, personal support worker, respiratory therapist, first responder.
- 'Health care workers associated with long-term care outbreaks' includes 'health care workers' reported to be part of an outbreak assigned as a long-term care home (via the outbreak number or case comments field). Excludes cases that reported 'Yes' to risk factors 'Resident of long-term care home' or 'Resident of nursing home or other chronic care facility' and 'Yes' to the calculated 'health care workers' variable.
- Percent change is calculated by taking the difference between the current period (i.e., daily count or sum of the daily count over a 7-day period) and previous period (i.e., daily count or sum of the daily count over a 7-day period), divided by the previous period.

Appendix A

Table A1. Weekly rates of confirmed COVID-19 cases per 100,000 population over recent rolling 7-day periods, by reported date and public health unit: Ontario, December 18, 2020 to December 30, 2020

Public Health Unit Name	Dec 18 to Dec 24	Dec 19 to Dec 25	Dec 20 to Dec 26	Dec 21 to Dec 27	Dec 22 to Dec 28	Dec 23 to Dec 29	Dec 24 to Dec 30	% change from Dec 18-24 to Dec 24-30
NORTH WEST								
Northwestern Health Unit	19.4	19.4	22.8	24.0	19.4	19.4	22.8	+17.5%
Thunder Bay District Health Unit	52.7	48.7	40.0	41.3	38.0	26.0	22.7	-56.9%
NORTH EAST								
Algoma Public Health	1.7	1.7	2.6	2.6	2.6	1.7	0.9	-47.1%
North Bay Parry Sound District Health Unit	12.3	10.0	10.0	8.5	9.2	9.2	10.8	-12.2%
Porcupine Health Unit	9.6	9.6	7.2	8.4	3.6	1.2	3.6	-62.5%
Public Health Sudbury & Districts	5.5	6.5	6.5	6.0	7.0	8.0	9.0	+63.6%
Timiskaming Health Unit	70.4	79.5	76.5	76.5	67.3	70.4	61.2	-13.1%
EASTERN								
Ottawa Public Health	31.9	37.2	34.6	38.4	40.1	46.4	53.9	+69.0%

Public Health Unit Name	Dec 18 to Dec 24	Dec 19 to Dec 25	Dec 20 to Dec 26	Dec 21 to Dec 27	Dec 22 to Dec 28	Dec 23 to Dec 29	Dec 24 to Dec 30	% change from Dec 18-24 to Dec 24-30
Eastern Ontario Health Unit	54.1	51.7	49.4	54.1	58.0	67.1	78.6	+45.3%
Hastings Prince Edward Public Health	14.8	11.3	9.5	9.5	8.9	10.7	10.1	-31.8%
Kingston, Frontenac and Lennox & Addington Public Health	27.3	22.1	24.4	21.2	22.6	19.3	21.2	-22.3%
Leeds, Grenville & Lanark District Health Unit	12.1	9.8	9.8	11.5	13.9	19.6	19.1	+57.9%
Renfrew County and District Health Unit	10.1	12.0	9.2	10.1	10.1	11.0	12.0	+18.8%
CENTRAL EAST								
Durham Region Health Department	92.2	89.4	87.9	84.1	84.9	87.9	94.9	+2.9%
Haliburton, Kawartha, Pine Ridge District Health Unit	26.5	25.4	22.8	20.6	20.6	21.7	24.3	-8.3%
Peel Public Health	190.8	182.6	177.0	173.9	173.9	178.1	180.3	-5.5%

Public Health Unit Name	Dec 18 to Dec 24	Dec 19 to Dec 25	Dec 20 to Dec 26	Dec 21 to Dec 27	Dec 22 to Dec 28	Dec 23 to Dec 29	Dec 24 to Dec 30	% change from Dec 18-24 to Dec 24-30
Peterborough Public Health	21.6	31.8	30.4	33.8	31.1	30.4	42.6	+97.2%
Simcoe Muskoka District Health Unit	57.9	58.4	57.4	56.9	61.0	59.9	63.4	+9.5%
York Region Public Health	130.8	129.6	121.7	114.5	125.8	136.6	150.5	+15.1%
TORONTO								
Toronto Public Health	141.1	141.6	146.3	142.1	147.5	154.0	149.8	+6.2%
SOUTH WEST								
Chatham-Kent Public Health	35.7	45.1	46.1	52.7	64.0	75.2	80.9	+126.6%
Grey Bruce Health Unit	20.6	21.2	20.6	18.8	17.1	15.3	15.9	-22.8%
Huron Perth Public Health	63.0	65.1	76.6	74.4	73.7	78.0	73.7	+17.0%
Lambton Public Health	77.1	81.7	104.6	115.3	125.2	125.2	136.7	+77.3%
Middlesex-London Health Unit	93.4	88.5	91.6	92.2	95.2	103.8	104.2	+11.6%
Southwestern Public Health	97.9	105.4	102.6	109.7	103.1	113.0	137.1	+40.0%
Windsor-Essex County Health Unit	258.5	271.6	272.1	276.8	278.7	271.2	279.9	+8.3%

Public Health Unit Name	Dec 18 to Dec 24	Dec 19 to Dec 25	Dec 20 to Dec 26	Dec 21 to Dec 27	Dec 22 to Dec 28	Dec 23 to Dec 29	Dec 24 to Dec 30	% change from Dec 18-24 to Dec 24-30
CENTRAL WEST								
Brant County Health Unit	51.5	50.3	50.3	51.5	61.2	61.2	63.8	+23.9%
City of Hamilton Public Health Services	108.4	109.1	106.6	115.3	123.3	128.7	141.9	+30.9%
Haldimand-Norfolk Health Unit	76.3	72.8	57.0	60.5	52.6	60.5	90.3	+18.3%
Halton Region Public Health	87.9	83.7	86.4	86.4	94.8	93.5	96.4	+9.7%
Niagara Region Public Health	131.9	114.3	109.8	117.9	121.9	127.6	139.1	+5.5%
Region of Waterloo Public Health and Emergency Services	109.2	104.4	97.0	91.4	88.0	93.9	88.1	-19.3%
Wellington-Dufferin-Guelph Public Health	105.8	93.9	95.5	98.7	103.2	102.3	96.8	-8.5%
TOTAL ONTARIO	106.7	105.3	104.4	103.6	106.9	111.2	114.7	+7.5%

Note: Rates are based on the sum of the daily case counts during the date ranges specified in each column.

Data Source: CCM plus

Disclaimer

This document was developed by Public Health Ontario (PHO). PHO provides scientific and technical advice to Ontario's government, public health organizations and health care providers. PHO's work is guided by the current best available evidence at the time of publication.

The application and use of this document is the responsibility of the user. PHO assumes no liability resulting from any such application or use.

This document may be reproduced without permission for non-commercial purposes only and provided that appropriate credit is given to PHO. No changes and/or modifications may be made to this document without express written permission from PHO.

Citation

Ontario Agency for Health Protection and Promotion (Public Health Ontario). Epidemiologic summary: COVID-19 in Ontario – January 15, 2020 to January 2, 2021. Toronto, ON: Queen's Printer for Ontario; 2021.

For Further Information

For more information, email cd@oahpp.ca.

Public Health Ontario

Public Health Ontario is an agency of the Government of Ontario dedicated to protecting and promoting the health of all Ontarians and reducing inequities in health. Public Health Ontario links public health practitioners, front-line health workers and researchers to the best scientific intelligence and knowledge from around the world.

For more information about PHO, visit publichealthontario.ca.

