

Daily Epidemiologic Summary

COVID-19 in Ontario: January 15, 2020 to January 31, 2021

This report includes the most current information available from CCM and other case management systems (CCM plus) as of **January 31, 2021**.

Please visit the interactive [Ontario COVID-19 Data Tool](#) to explore recent COVID-19 data by public health unit, age group, sex, and trends over time.

A [weekly summary report](#) is available with additional information to complement the daily report.

This **daily** report provides an epidemiologic summary of recent COVID-19 activity in Ontario. The change in cases is determined by taking the cumulative difference between the current day and the previous day.

Highlights

- There are a total of 270,180 confirmed cases of COVID-19 in Ontario reported to date.
- Compared to the previous day, this represents:
 - An increase of 1,969 confirmed cases (percent change of +6.5%)
 - An increase of 36 deaths (percent change of -16.3%)
 - An increase of 2,132 resolved cases (percent change of -7.8%)

In this document, the term 'change in cases' refers to cases publicly reported by the province for a given day. Data corrections or updates can result in case records being removed and or updated from past reports and may result in subset totals for updated case counts (i.e., age group, gender) differing from the overall updated case counts.

The term public health unit reported date in this document refers to the date local public health units were first notified of the case.

Case Characteristics

Table 1a. Summary of recent confirmed cases of COVID-19: Ontario

	Change in cases January 30, 2021*	Change in cases January 31, 2021†	Percentage change January 31, 2021 compared to January 30, 2021	Cumulative case count as of January 31, 2021
Total number of cases	1,848	1,969	6.5%	270,180
Number of deaths	43	36	-16.3%	6,224
Number resolved	2,313	2,132	-7.8%	244,939

Note: The number of cases publicly reported by the province each day may not align with case counts reported to public health on a given day; public health unit reported date refers to the date local public health was first notified of the case. Data corrections or updates can result in case records being removed and or updated from past reports.

* Due to a data catch-up, cases reported on January 30, 2021 for Toronto Public Health include approximately 300 additional records. This catch-up impacts overall case counts for Ontario.

† Due to process adjustments and transitioning to CCM, additional records were reported for Toronto Public Health on January 31, 2021. This impacts overall case counts for Ontario.

Data Source: CCM plus

Table 1b. Summary of recent confirmed cases of COVID-19 by age group and gender: Ontario

	Change in cases January 30, 2021	Change in cases January 31, 2021	Cumulative case count as of January 31, 2021
Gender: Male	850	968	132,174
Gender: Female	978	983	136,489
Ages: 19 and under	229	280	35,296
Ages: 20-39	673	695	98,773
Ages: 40-59	548	612	78,034
Ages: 60-79	271	274	39,000
Ages: 80 and over	130	108	19,040

Note: Not all cases have a reported age or gender reported. Data corrections or updates can result in case records being removed and or updated from past reports and may result in subset totals (i.e., age group, gender) differing from past publicly reported case counts.

Data Source: CCM plus

Table 2. Summary of recent confirmed cases of COVID-19 in school aged children by age group, August 30, 2020 to January 31, 2021: Ontario

	Change in cases January 30, 2021	Change in cases January 31, 2021	Cumulative case count from August 30, 2020 to January 31, 2021
Ages: 4 to 8	52	40	5,708
Ages: 9 to 13	49	54	7,879
Ages: 14 to 17	56	77	8,317

Note: Includes all confirmed cases of COVID-19 for specified ages, regardless of school attendance. Data corrections or updates can result in case records being removed and or updated from past reports and may result in subset totals (i.e., age group) differing from past publicly reported case counts.

Data Source: CCM plus

Table 3. Summary of recent confirmed cases of COVID-19 in long-term care homes: Ontario

Long-term care home cases	Change in cases January 30, 2021	Change in cases January 31, 2021	Cumulative case count as of January 31, 2021
Residents	89	62	14,616
Health care workers	71	30	6,020
Deaths among residents	21	19	3,614
Deaths among health care workers	0	0	10

Note: Information on how long-term care home residents and health care workers are identified is available in the technical notes. Also, the change in cases in these categories may represent existing case records that have been updated.

Data Source: CCM plus

Table 4. Summary of confirmed variant of concern (VOC) cases: Ontario

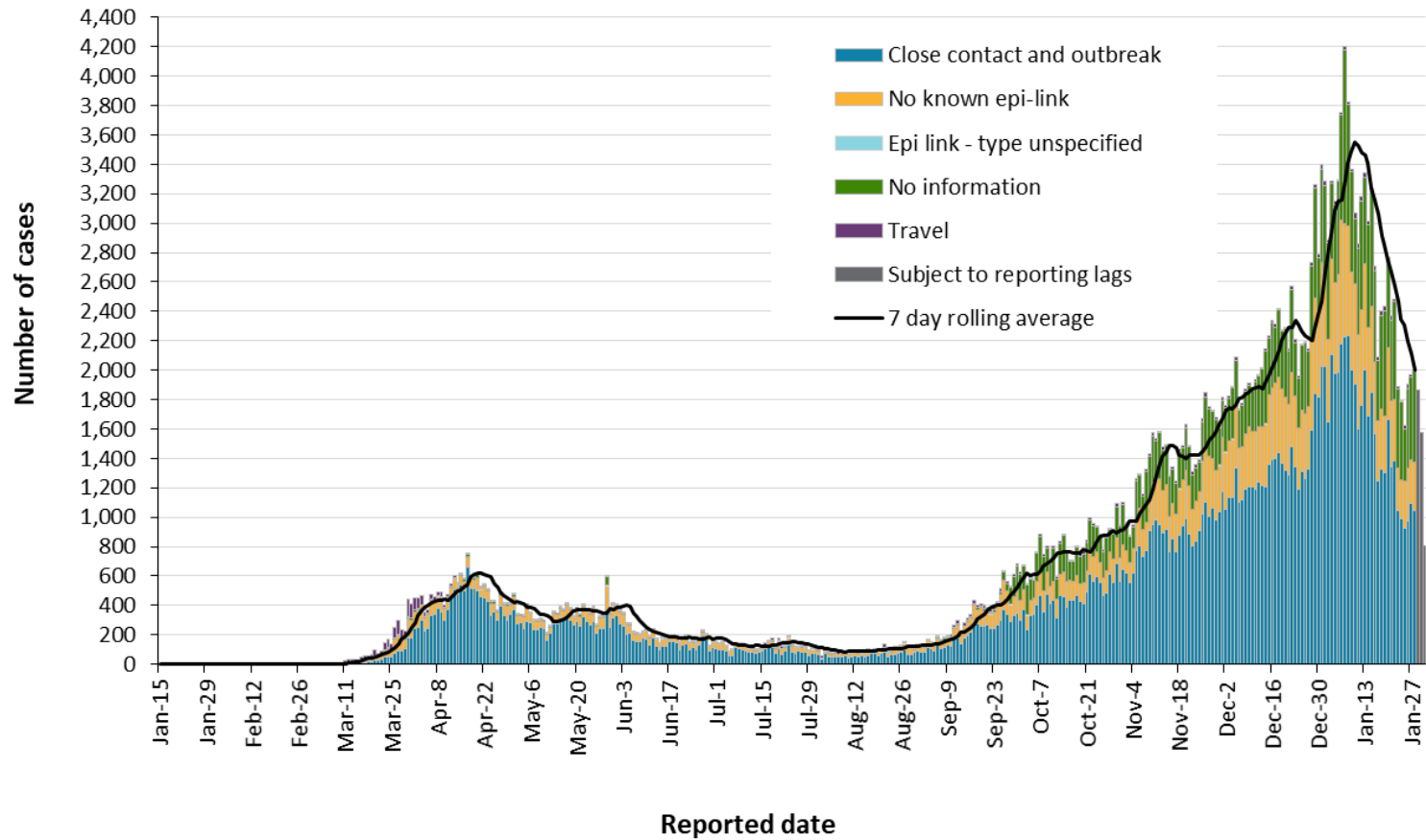
Variant	Cumulative case count up to January 31
Lineage B.1.1.7 (UK variant)	69

Note: Caution should be taken when interpreting VOC data due to the nature of the screening and confirmation process, including delays between specimen collection and whole genome sequencing (WGS). A confirmed VOC case is defined as a COVID-19 case in whom a designated VOC was detected by WGS of their SARS-CoV-2 positive specimen. Data corrections or updates can result in case records being removed and/or updated and may result in totals differing from past publicly reported case counts. For a breakdown of confirmed VOC cases by PHU please see Appendix A.

Data Source: CCM plus

Time

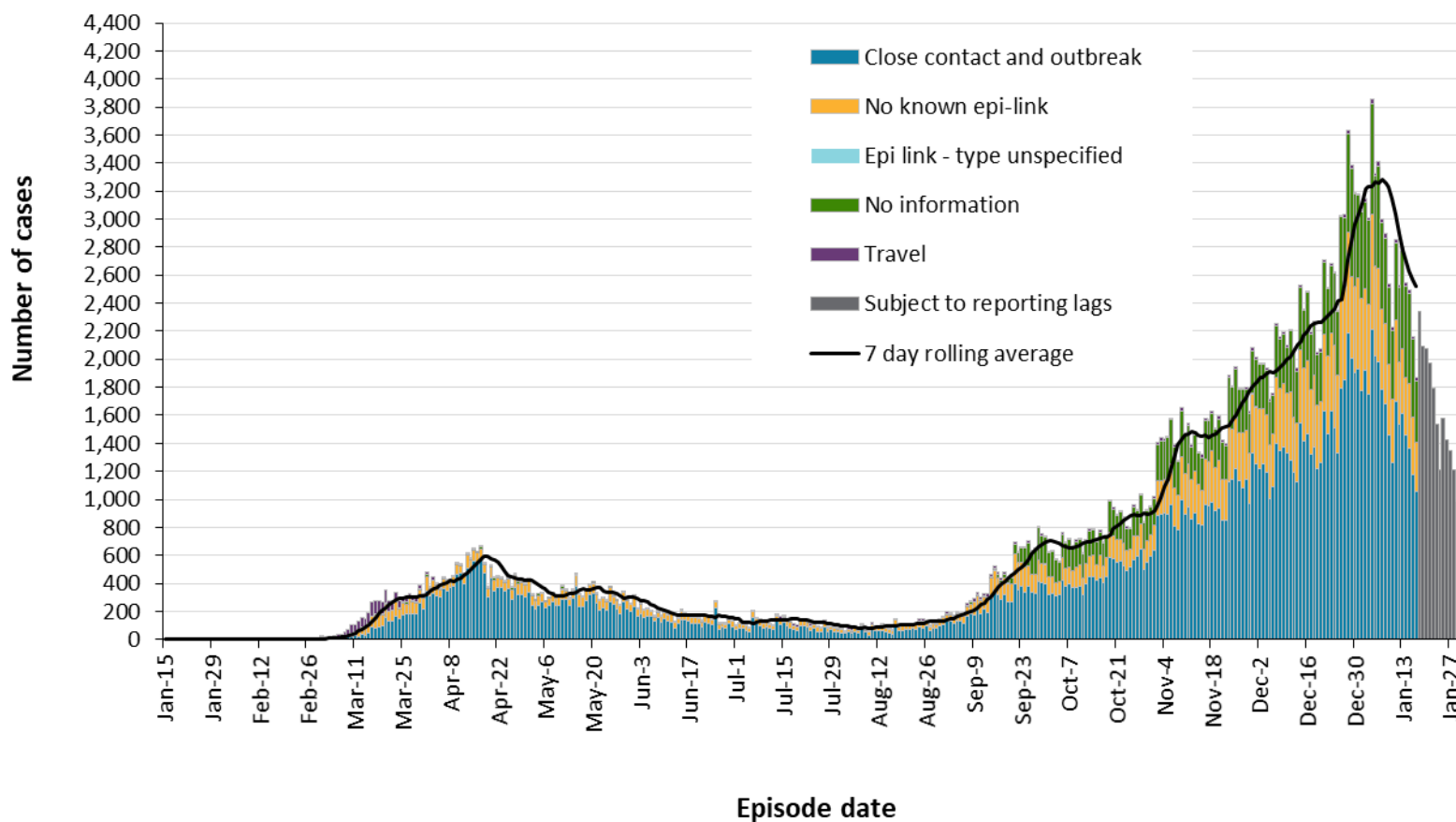
Figure 1. Confirmed cases of COVID-19 by likely acquisition and public health unit reported date: Ontario, January 15, 2020 to January 31, 2021



Data Source: CCM plus

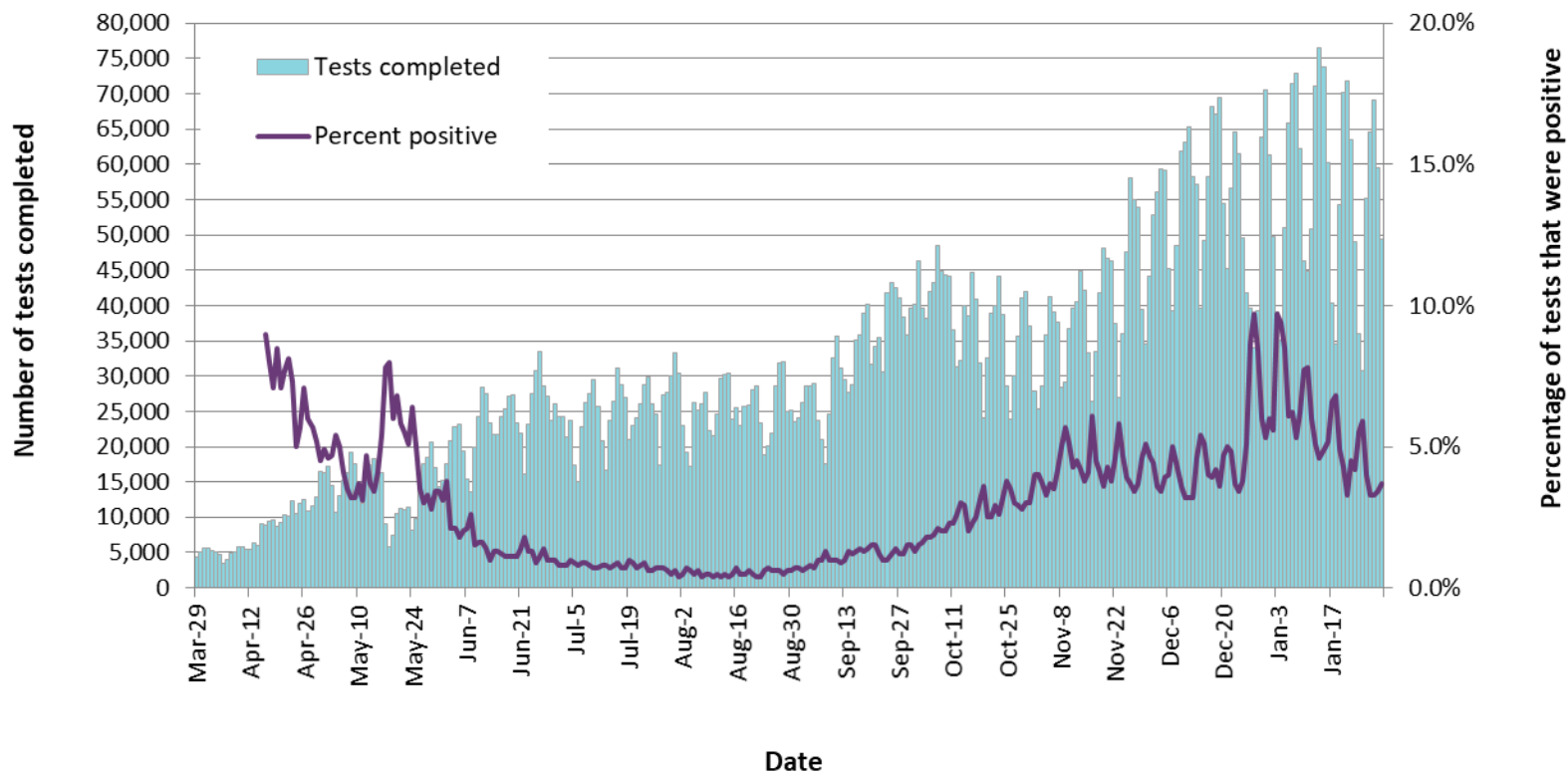
COVID-19 in Ontario: January 15, 2020 to January 31, 2021

Figure 2. Confirmed cases of COVID-19 by likely acquisition and approximation of symptom onset date: Ontario, January 15, 2020 to January 31, 2021



Note: Not all cases may have an episode date and those without one are not included in the figure. Episode date is defined and available in the technical notes.
Data Source: CCM plus

Figure 3. Number of COVID-19 tests completed and percent positivity: Ontario, March 29, 2020 to January 30, 2021

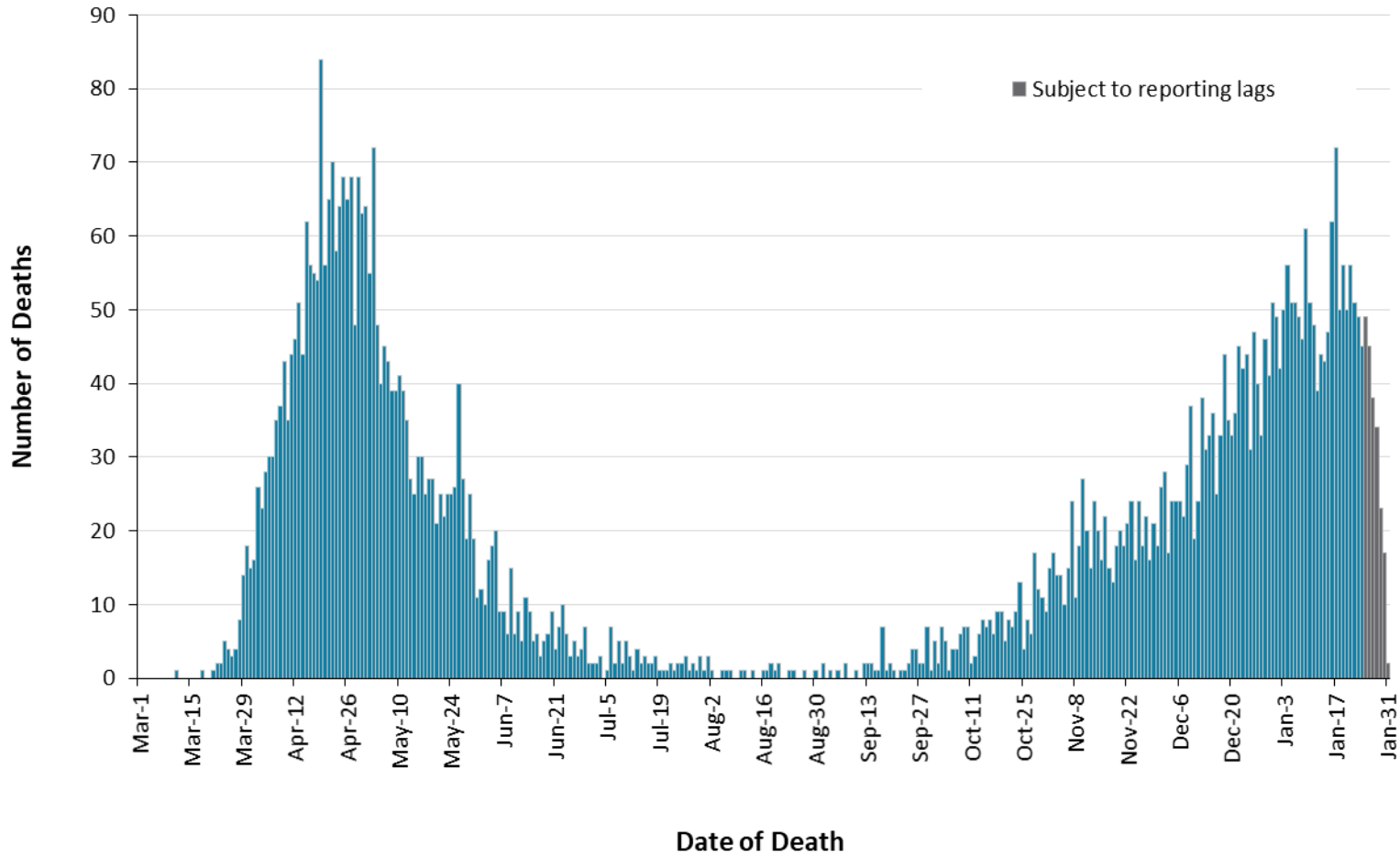


Note: The number of tests performed does not reflect the number of specimens or persons tested. More than one test may be performed per specimen or per person. As such, the percentage of tests that were positive does not necessarily translate to the number of specimens or persons testing positive.

Data Source: The Provincial COVID-19 Diagnostics Network, data reported by member microbiology laboratories.

Severity

Figure 4. Confirmed deaths among COVID-19 cases by date of death: Ontario, March 1, 2020 to January 31, 2021



Note: Cases without a death date are not included in the figure.

Data Source: CCM plus

COVID-19 in Ontario: January 15, 2020 to January 31, 2021

Table 5. Confirmed cases of COVID-19 by severity: Ontario

	Cumulative case count as of January 31, 2021	Percentage of all cases
Cumulative deaths reported (please note there may be a reporting delay for deaths)	6,224	2.3%
Deaths reported in ages: 19 and under	2	< 0.1%
Deaths reported in ages: 20-39	23	< 0.1%
Deaths reported in ages: 40-59	233	0.3%
Deaths reported in ages: 60-79	1,682	4.3%
Deaths reported in ages: 80 and over	4,283	22.5%
Ever in ICU	2,490	0.9%
Ever hospitalized	13,533	5.0%

Note: Not all cases have an age reported. Data corrections or updates can result in case records being removed and/or updated and may result in totals differing from past publicly reported case counts.

Data Source: CCM plus

Geography

Table 6. Summary of recent confirmed cases of COVID-19 by public health unit and region: Ontario

Public Health Unit Name	Change in cases January 30, 2021	Change in cases January 31, 2021	Cumulative case count	Cumulative rate per 100,000 population
Northwestern Health Unit	1	0	263	300.0
Thunder Bay District Health Unit	13	7	972	648.2
TOTAL NORTH WEST	14	7	1,235	519.7
Algoma Public Health	3	0	165	144.2
North Bay Parry Sound District Health Unit	10	2	206	158.8
Porcupine Health Unit	10	0	275	329.6
Public Health Sudbury & Districts	9	0	525	263.8
Timiskaming Health Unit	0	0	89	272.3
TOTAL NORTH EAST	32	2	1,260	225.3
Ottawa Public Health	55	25	13,353	1,266.1
Eastern Ontario Health Unit	19	14	2,463	1,180.1
Hastings Prince Edward Public Health	0	0	358	212.5
Kingston, Frontenac and Lennox & Addington Public Health	-1	1	654	307.4
Leeds, Grenville & Lanark District Health Unit	5	0	807	466.0
Renfrew County and District Health Unit	1	1	302	278.0

Public Health Unit Name	Change in cases January 30, 2021	Change in cases January 31, 2021	Cumulative case count	Cumulative rate per 100,000 population
TOTAL EASTERN	79	41	17,937	931.1
Durham Region Health Department	55	90	10,758	1,510.1
Haliburton, Kawartha, Pine Ridge District Health Unit	8	19	873	462.1
Peel Public Health	306	330	54,809	3,412.9
Peterborough Public Health	4	4	546	369.0
Simcoe Muskoka District Health Unit	52	36	5,528	922.0
York Region Public Health	168	128	25,541	2,083.6
TOTAL CENTRAL EAST	593	607	98,055	2,188.4
Toronto Public Health	726*	886†	84,807	2,717.9
TOTAL TORONTO	726	886	84,807	2,717.9
Chatham-Kent Public Health	34	15	1,215	1,142.8
Grey Bruce Health Unit	5	3	642	377.9
Huron Perth Public Health	15	5	1,234	883.0
Lambton Public Health	9	9	1,840	1,405.0
Middlesex-London Health Unit	10	47	5,698	1,122.7
Southwestern Public Health	8	15	2,306	1,090.3
Windsor-Essex County Health Unit	53	72	12,129	2,855.0
TOTAL SOUTH WEST	134	166	25,064	1,482.4
Brant County Health Unit	5	5	1,485	956.8

Public Health Unit Name	Change in cases January 30, 2021	Change in cases January 31, 2021	Cumulative case count	Cumulative rate per 100,000 population
City of Hamilton Public Health Services	49	39	9,247	1,561.6
Haldimand-Norfolk Health Unit	4	4	1,283	1,124.6
Halton Region Public Health	47	55	8,141	1,315.0
Niagara Region Public Health	87	61	7,907	1,673.5
Region of Waterloo Public Health and Emergency Services	48	60	9,458	1,618.5
Wellington-Dufferin-Guelph Public Health	30	36	4,301	1,378.9
TOTAL CENTRAL WEST	270	260	41,822	1,467.8
TOTAL ONTARIO	1,848	1,969	270,180	1,817.6

Notes: Health units with data corrections or updates could result in records being removed from totals resulting in negative counts.

* Due to a data catch-up, cases reported on January 31, 2021 for Toronto Public Health include approximately 300 additional records. This catch-up impacts overall case counts for Ontario.

† Due to process adjustments and transitioning to CCM, additional records were reported for Toronto Public Health on January 31, 2021. This impacts overall case counts for Ontario.

Data Source: CCM plus

Outbreaks

Table 7. Summary of recent confirmed COVID-19 outbreaks reported in long-term care homes, retirement homes and hospitals by status: Ontario

Institution type	Change in outbreaks January 30, 2021	Change in outbreaks January 31, 2021	Number of ongoing outbreaks	Cumulative number of outbreaks reported
Long-term care homes	9	5	241	1,188
Retirement homes	7	3	137	677
Hospitals	1	1	84	363

Note: Ongoing outbreaks include all outbreaks that are 'Open' in CCM plus without a 'Declared Over Date' recorded, or where the outbreak started more than five months ago, even for outbreaks where the Outbreak Status value selected in CCM/iPHIS is 'OPEN'. The start of the outbreak is determined by the onset date of first case, or if missing the outbreak reported date, or else if that is also missing, then the outbreak created date.

Data Source: CCM plus

Technical Notes

Data Sources

- The data for this report were based on:
 - Information extracted from the Ontario Ministry of Health (Ministry) integrated Public Health Information System (iPHIS) database for Toronto Public Health as of **January 31, 2021 at 1 p.m.**
 - Information successfully uploaded to the Ministry from Local Systems: Toronto Public Health (Coronavirus Rapid Entry System) CORES as of **January 31, 2021 at 2 p.m.**
 - Information successfully extracted from the Public Health Case and Contact Management Solution (CCM) for all other PHUs by PHO as of **January 31, 2021 at 1 p.m.**
- CCM and CCM plus (which includes CCM, iPHIS, and CORES) are dynamic disease reporting systems, which allow ongoing updates to data previously entered. As a result, data extracted from CCM and the Local Systems represent a snapshot at the time of extraction and may differ from previous or subsequent reports.
- Ontario population projection data for 2020 were sourced from Ministry, IntelliHEALTH Ontario. Data were extracted on November 26, 2019.
- COVID-19 test data were based on information from The Provincial COVID-19 Diagnostics Network, reported by member microbiology laboratories.

Data Caveats

- The data only represent cases reported to public health units and recorded in CCM plus. As a result, all counts will be subject to varying degrees of underreporting due to a variety of factors, such as disease awareness and medical care seeking behaviours, which may depend on severity of illness, clinical practice, changes in laboratory testing, and reporting behaviours.
- Lags in CCM plus data entry due to weekend staffing may result in lower case counts than would otherwise be recorded.
- Only cases meeting the confirmed case classification as listed in the MOH [COVID-19 case definition](#) are included in the report counts from CCM plus. This includes persons with a positive detection of serum/plasma immunoglobulin G (IgG) antibodies to SARS-CoV-2, which was added to the confirmed case definition on August 6, 2020.
- Cases of confirmed reinfection, i.e. where genome sequencing indicates the two episodes are caused by different viral lineages, added to the confirmed case definition on November 20, 2020, are counted as unique investigations.
- The number of tests performed does not reflect the number of specimens or persons tested. More than one test may be performed per specimen or per person. As such, the percentage of

tests that were positive does not necessarily translate to the number of specimens or persons testing positive.

- Reported date is the date the case was reported to the public health unit.
- Case episode date is based on an estimate of the best date of disease onset. This date is calculated based on either the date of symptom onset, specimen collection/test date, or the date reported to the public health unit.
- Resolved cases are determined only for COVID-19 cases that have not died. Cases that have died are considered fatal and not resolved. The following cases are classified as resolved:
 - Cases that are reported as 'recovered' in CCM
 - Cases that are not hospitalized and are 14 days past their episode date
 - Cases that are currently hospitalized (no hospital end date entered) and have a status of 'closed' in CCM (indicating public health unit follow-up is complete) and are 14 days past their symptom onset date or specimen collection date
- Hospitalization includes all cases for which a hospital admission date was reported at the time of data extraction. It includes cases that have been discharged from hospital as well as cases that are currently hospitalized. Emergency room visits are not included in the number of reported hospitalizations.
- ICU admission includes all cases for which an ICU admission date was reported at the time of data extraction. It is a subset of the count of hospitalized cases. It includes cases that have been treated or that are currently being treated in an ICU.
- Orientation of case counts by geography is based on the diagnosing health unit (DHU). DHU refers to the case's public health unit of residence at the time of illness onset and not necessarily the location of exposure. Cases for which the DHU was reported as MOH (to signify a case that is not a resident of Ontario) have been excluded from the analyses.
- Likely source of acquisition is determined by examining the epidemiologic link and epidemiologic link status fields in CCM and local systems. If no epidemiologic link is identified in those fields the risk factor fields are examined to determine whether a case travelled, was associated with a confirmed outbreak, was a contact of a case, had no known epidemiological link (sporadic community transmission) or was reported to have an unknown source/no information was reported. Some cases may have no information reported if the case is untraceable, was lost to follow-up or referred to FNIHB. Cases with multiple risk factors were assigned to a single likely acquisition source group which was determined hierarchically in the following order:
 - For cases with an episode date *on or after* April 1, 2020: Outbreak-associated > close contact of a confirmed case > travel > no known epidemiological link > information missing or unknown

- For cases with an episode date *before* April 1, 2020: Travel > outbreak-associated > close contact of a confirmed case > no known epidemiological link > information missing or unknown
- Deaths are determined by using the outcome field in CCM plus. Any case marked 'Fatal' is included in the deaths data. The CCM field Type of Death is not used to further categorize the data.
 - The date of death is determined using the outcome date field for cases marked as 'Fatal' in the outcome field.
- COVID-19 cases from CCM plus for which the Classification and/or Disposition was reported as ENTERED IN ERROR, DOES NOT MEET DEFINITION, IGNORE, DUPLICATE, or any variation on these values have been excluded. The provincial case count for COVID-19 includes cases that are counted once across all systems from which the case data are obtained. Duplicate records may exist if these records were not identified and resolved prior to data upload to the Ministry.
- Ongoing outbreaks include all outbreaks that are 'Open' in CCM plus without a 'Declared Over Date' recorded, or where the outbreak started more than five months ago, even for outbreaks where the Outbreak Status value selected in CCM/iPHIS is 'OPEN'. The start of the outbreak is determined by the onset date of first case, or if missing the outbreak reported date, or else if that is also missing, then the outbreak created date.
- 'Long-term care home residents' includes cases that reported 'Yes' to the risk factor 'Resident of a long-term care home'; or 'Yes' to the risk factor 'Resident of nursing home or other chronic care facility' and reported to be part of an outbreak assigned as a long-term care home (via the Outbreak number or case comments field); or were reported to be part of an outbreak assigned as a long-term care home (via the outbreak number or case comments field) with an age over 70 years and did not report 'No' to the risk factors 'Resident of long-term care home' or 'Resident of nursing home or other chronic care facility'. 'Long-term care home residents' excludes cases that reported 'Yes' to any of the health care worker occupational risk factors.
- The 'health care workers' variable includes cases that reported 'Yes' to any of the occupation of health care worker, doctor, nurse, dentist, dental hygienist, midwife, other medical technicians, personal support worker, respiratory therapist, first responder.
- 'Health care workers associated with long-term care outbreaks' includes 'health care workers' reported to be part of an outbreak assigned as a long-term care home (via the outbreak number or case comments field). Excludes cases that reported 'Yes' to risk factors 'Resident of long-term care home' or 'Resident of nursing home or other chronic care facility' and 'Yes' to the calculated 'health care workers' variable.
- Percent change is calculated by taking the difference between the current period (i.e., daily count or sum of the daily count over a 7-day period) and previous period (i.e., daily count or sum of the daily count over a 7-day period), divided by the previous period.
- PANGO lineage: Evidence suggests this lineage arose in the United Kingdom in September, 2020. Epidemiological analysis has associated this lineage with a significant increase in the rate of COVID-19 infection in United Kingdom, and it is believed to be related to an N501Y mutation in

the spike (S) gene. The VOC-202012/01 is highly associated with this lineage. The PANGO lineage B.1.1.7 will be assigned to sequences with more than 4 of the 17 defining B.1.1.7 SNPs.

- Public Health Ontario conducts variants of concern (VOC) surveillance on a subset of SARS-CoV-2 positive specimens. Additional SARS-CoV-2 specimens are referred to PHO Laboratory for screening provided they meet the criteria outlined here:
<https://www.publichealthontario.ca/en/laboratory-services/test-information-index/covid-19-voc>

Appendix A

Table A1. Weekly rates of confirmed COVID-19 cases per 100,000 population over recent rolling 7-day periods, by reported date and public health unit: Ontario, January 16 to January 28, 2021

Public Health Unit Name	Jan 16 to Jan 22	Jan 17 to Jan 23	Jan 18 to Jan 24	Jan 19 to Jan 25	Jan 20 to Jan 26	Jan 21 to Jan 27	Jan 22 to Jan 28	% change from Jan 16-Jan 22 to Jan 22-Jan 28
NORTH WEST								
Northwestern Health Unit	14.8	17.1	14.8	17.1	18.2	21.7	24.0	+62.2%
Thunder Bay District Health Unit	94.7	95.4	93.4	80.7	89.4	70.7	72.0	-24.0%
NORTH EAST								
Algoma Public Health	9.6	7.9	7.0	7.0	7.0	5.2	11.4	+18.8%
North Bay Parry Sound District Health Unit	3.9	3.1	1.5	2.3	1.5	1.5	3.1	-20.5%
Porcupine Health Unit	33.6	59.9	63.5	47.9	53.9	70.7	82.7	+146.1%
Public Health Sudbury & Districts	25.6	29.6	33.2	37.7	37.7	39.7	38.7	+51.2%
Timiskaming Health Unit	9.2	9.2	9.2	9.2	9.2	9.2	9.2	0.0%
EASTERN								
Ottawa Public Health	65.1	61.7	58.4	54.8	53.9	45.9	44.4	-31.8%
Eastern Ontario Health Unit	83.8	75.2	71.9	68.0	76.7	68.5	64.2	-23.4%
Hastings Prince Edward Public Health	10.1	7.7	5.9	4.2	3.0	2.4	1.2	-88.1%
Kingston, Frontenac and Lennox & Addington Public Health	9.4	10.8	9.4	8.5	8.0	6.6	6.1	-35.1%

Public Health Unit Name	Jan 16 to Jan 22	Jan 17 to Jan 23	Jan 18 to Jan 24	Jan 19 to Jan 25	Jan 20 to Jan 26	Jan 21 to Jan 27	Jan 22 to Jan 28	% change from Jan 16-Jan 22 to Jan 22-Jan 28
Leeds, Grenville & Lanark District Health Unit	7.5	8.1	8.1	8.1	9.2	12.1	12.7	+69.3%
Renfrew County and District Health Unit	2.8	1.8	0.9	0.9	0.0	0.0	1.8	-35.7%
CENTRAL EAST								
Durham Region Health Department	80.3	74.8	70.7	72.0	71.3	64.4	66.5	-17.2%
Haliburton, Kawartha, Pine Ridge District Health Unit	48.7	48.7	49.8	48.7	47.6	31.8	27.5	-43.5%
Peel Public Health	195.1	182.2	175.9	176.3	173.0	156.8	154.0	-21.1%
Peterborough Public Health	25.7	27.0	25.7	23.7	25.0	25.7	26.4	+2.7%
Simcoe Muskoka District Health Unit	76.6	75.4	72.7	64.7	59.9	54.9	52.7	-31.2%
York Region Public Health	123.7	124.1	117.3	114.9	114.4	111.3	104.4	-15.6%
TORONTO								
Toronto Public Health	173.0	167.9	172.1	158.9	147.8	144.3	142.9	-17.4%
SOUTH WEST								
Chatham-Kent Public Health	91.2	85.6	78.1	79.9	86.5	97.8	95.0	+4.2%
Grey Bruce Health Unit	13.5	10.0	10.6	10.6	12.4	13.0	15.3	+13.3%
Huron Perth Public Health	93.7	87.3	93.7	72.3	78.0	65.8	58.7	-37.4%
Lambton Public Health	153.5	101.6	84.8	81.7	71.8	61.1	62.6	-59.2%
Middlesex-London Health Unit	80.2	78.0	72.9	64.0	55.0	51.2	51.0	-36.4%

Public Health Unit Name	Jan 16 to Jan 22	Jan 17 to Jan 23	Jan 18 to Jan 24	Jan 19 to Jan 25	Jan 20 to Jan 26	Jan 21 to Jan 27	Jan 22 to Jan 28	% change from Jan 16-Jan 22 to Jan 22-Jan 28
Southwestern Public Health	70.9	71.9	65.7	59.6	53.9	61.9	58.6	-17.3%
Windsor-Essex County Health Unit	175.1	150.4	144.3	127.1	113.5	107.3	106.4	-39.2%
CENTRAL WEST								
Brant County Health Unit	41.9	39.9	38.0	43.2	47.0	41.2	40.6	-3.1%
City of Hamilton Public Health Services	105.5	98.6	94.7	94.6	94.1	92.9	91.7	-13.1%
Haldimand-Norfolk Health Unit	69.2	64.0	58.7	53.5	40.3	42.1	36.8	-46.8%
Halton Region Public Health	85.6	80.9	77.5	73.3	77.4	73.3	63.3	-26.1%
Niagara Region Public Health	159.8	147.7	146.7	140.7	141.6	141.6	135.2	-15.4%
Region of Waterloo Public Health and Emergency Services	118.4	108.2	107.0	102.5	101.3	89.5	83.9	-29.1%
Wellington-Dufferin-Guelph Public Health	120.9	123.1	122.8	125.0	120.2	115.7	108.4	-10.3%
TOTAL ONTARIO	116.1	110.5	108.5	103.3	99.7	94.4	91.9	-20.8%

Note: Rates are based on the sum of the daily case counts during the date ranges specified in each column.

Data Source: CCM plus

Table A2. Summary of confirmed variant of concern (VOC) cases by public health unit: Ontario

Public Health Unit Name	Cumulative case count for Lineage B.1.1.7 as of January 31, 2021
Algoma Public Health	0
Brant County Health Unit	0
Chatham-Kent Public Health	0
City of Hamilton Public Health Services	0
Durham Region Health Department	7
Eastern Ontario Health Unit	0
Grey Bruce Health Unit	0
Haldimand-Norfolk Health Unit	1
Haliburton, Kawartha, Pine Ridge District Health Unit	0
Halton Region Public Health	1
Hastings Prince Edward Public Health	0
Huron Perth Public Health	0
Kingston, Frontenac and Lennox & Addington Public Health	1
Lambton Public Health	0
Leeds, Grenville & Lanark District Health Unit	0
Middlesex-London Health Unit	4
Niagara Region Public Health	0
North Bay Parry Sound District Health Unit	0

Public Health Unit Name	Cumulative case count for Lineage B.1.1.7 as of January 31, 2021
Northwestern Health Unit	0
Ottawa Public Health	3
Peel Public Health	4
Peterborough Public Health	0
Porcupine Health Unit	0
Public Health Sudbury & Districts	0
Region of Waterloo Public Health and Emergency Services	1
Renfrew County and District Health Unit	0
Simcoe Muskoka District Health Unit	16
Southwestern Public Health	0
Thunder Bay District Health Unit	0
Timiskaming Health Unit	0
Toronto Public Health	15
Wellington-Dufferin-Guelph Public Health	0
Windsor-Essex County Health Unit	0
York Region Public Health	16
TOTAL ONTARIO	69

Note: Caution should be taken when interpreting VOC data due to the nature of the screening and confirmation process, including delays between specimen collection and whole genome sequencing (WGS). A confirmed VOC case is defined as a COVID-19 case in whom a designated VOC was detected by WGS of their SARS-CoV-2 positive specimen. Data corrections or updates can result in case records being removed and/or updated and may result in totals differing from past publicly reported case counts.

Data Source: CCM plus

Disclaimer

This document was developed by Public Health Ontario (PHO). PHO provides scientific and technical advice to Ontario's government, public health organizations and health care providers. PHO's work is guided by the current best available evidence at the time of publication.

The application and use of this document is the responsibility of the user. PHO assumes no liability resulting from any such application or use.

This document may be reproduced without permission for non-commercial purposes only and provided that appropriate credit is given to PHO. No changes and/or modifications may be made to this document without express written permission from PHO.

Citation

Ontario Agency for Health Protection and Promotion (Public Health Ontario). Epidemiologic summary: COVID-19 in Ontario – January 15, 2020 to January 31, 2021. Toronto, ON: Queen's Printer for Ontario; 2021.

For Further Information

For more information, email cd@oahpp.ca.

Public Health Ontario

Public Health Ontario is an agency of the Government of Ontario dedicated to protecting and promoting the health of all Ontarians and reducing inequities in health. Public Health Ontario links public health practitioners, front-line health workers and researchers to the best scientific intelligence and knowledge from around the world.

For more information about PHO, visit publichealthontario.ca.

