

Daily Epidemiologic Summary

COVID-19 in Ontario: January 15, 2020 to February 01, 2021

This report includes the most current information available from CCM as of **February 01, 2021**.

Please visit the interactive [Ontario COVID-19 Data Tool](#) to explore recent COVID-19 data by public health unit, age group, sex, and trends over time.

A [weekly summary report](#) is available with additional information to complement the daily report.

This **daily** report provides an epidemiologic summary of recent COVID-19 activity in Ontario. The change in cases is determined by taking the cumulative difference between the current day and the previous day.

Highlights

- There are a total of 270,925* confirmed cases of COVID-19 in Ontario reported to date.
- Compared to the previous day, this represents:
 - An increase of 745 confirmed cases
 - An increase of 14 deaths
 - An increase of 2,297 resolved cases

*On February 1, Toronto Public Health (TPH) migrated all COVID-19 data to CCM from their local CORES system. This migration had an impact on today's data. Most notably, TPH's case count is negative following the identification of duplicate cases and there were data corrections for some fields (e.g., long-term care home residents and health care workers). As well, case counts for other PHUs may have been affected by system outages related to the migration. Additional data fluctuations may occur over the next few days.

In this document, the term 'change in cases' refers to cases publicly reported by the province for a given day. Data corrections or updates can result in case records being removed and or updated from past reports and may result in subset totals for updated case counts (i.e., age group, gender) differing from the overall updated case counts.

The term public health unit reported date in this document refers to the date local public health units were first notified of the case.

Case Characteristics

Table 1a. Summary of recent confirmed cases of COVID-19: Ontario

	Change in cases January 31, 2021	Change in cases February 01, 2021*	Percentage change February 01, 2021 compared to January 31, 2021	Cumulative case count as of February 01, 2021
Total number of cases	1,969	745	N/A	270,925
Number of deaths	36	14	N/A	6,238
Number resolved	2,132	2,297	N/A	247,236

Note: The number of cases publicly reported by the province each day may not align with case counts reported to public health on a given day; public health unit reported date refers to the date local public health was first notified of the case. Data corrections or updates can result in case records being removed and or updated from past reports.

Data Source: CCM

*On February 1, Toronto Public Health (TPH) migrated all COVID-19 data to CCM from their local CORES system. This migration had an impact on today's data. Most notably, TPH's case count is negative following the identification of duplicate cases and there were data corrections for some fields (e.g., long-term care home residents and health care workers). As well, case counts for other PHUs may have been affected by system outages related to the migration. Additional data fluctuations may occur over the next few days.

Table 1b. Summary of recent confirmed cases of COVID-19 by age group and gender: Ontario

	Change in cases January 31, 2021	Change in cases February 01, 2021	Cumulative case count as of February 01, 2021
Gender: Male	968	388	132,562
Gender: Female	983	296	136,785
Ages: 19 and under	280	161	35,457
Ages: 20-39	695	233	99,006
Ages: 40-59	612	214	78,248
Ages: 60-79	274	114	39,114
Ages: 80 and over	108	-3	19,037

Note: Not all cases have a reported age or gender reported. Data corrections or updates can result in case records being removed and or updated from past reports and may result in subset totals (i.e., age group, gender) differing from past publicly reported case counts.

Data Source: CCM

Table 2. Summary of recent confirmed cases of COVID-19 in school aged children by age group, August 30, 2020 to February 01, 2021: Ontario

	Change in cases January 31, 2021	Change in cases February 01, 2021	Cumulative case count from August 30, 2020 to February 01, 2021
Ages: 4 to 8	40	42	5,750
Ages: 9 to 13	54	41	7,920
Ages: 14 to 17	77	38	8,355

Note: Includes all confirmed cases of COVID-19 for specified ages, regardless of school attendance. Data corrections or updates can result in case records being removed and or updated from past reports and may result in subset totals (i.e., age group) differing from past publicly reported case counts.

Data Source: CCM

Table 3. Summary of recent confirmed cases of COVID-19 in long-term care homes: Ontario

Long-term care home cases	Change in cases January 31, 2021	Change in cases February 01, 2021	Cumulative case count as of February 01, 2021
Residents	62	-30	14,586
Health care workers	30	198	6,218
Deaths among residents	19	4	3,618
Deaths among health care workers	0	0	10

Note: Information on how long-term care home residents and health care workers are identified is available in the technical notes. Also, the change in cases in these categories may represent existing case records that have been updated.

Data Source: CCM

Table 4. Summary of confirmed variant of concern (VOC) cases: Ontario

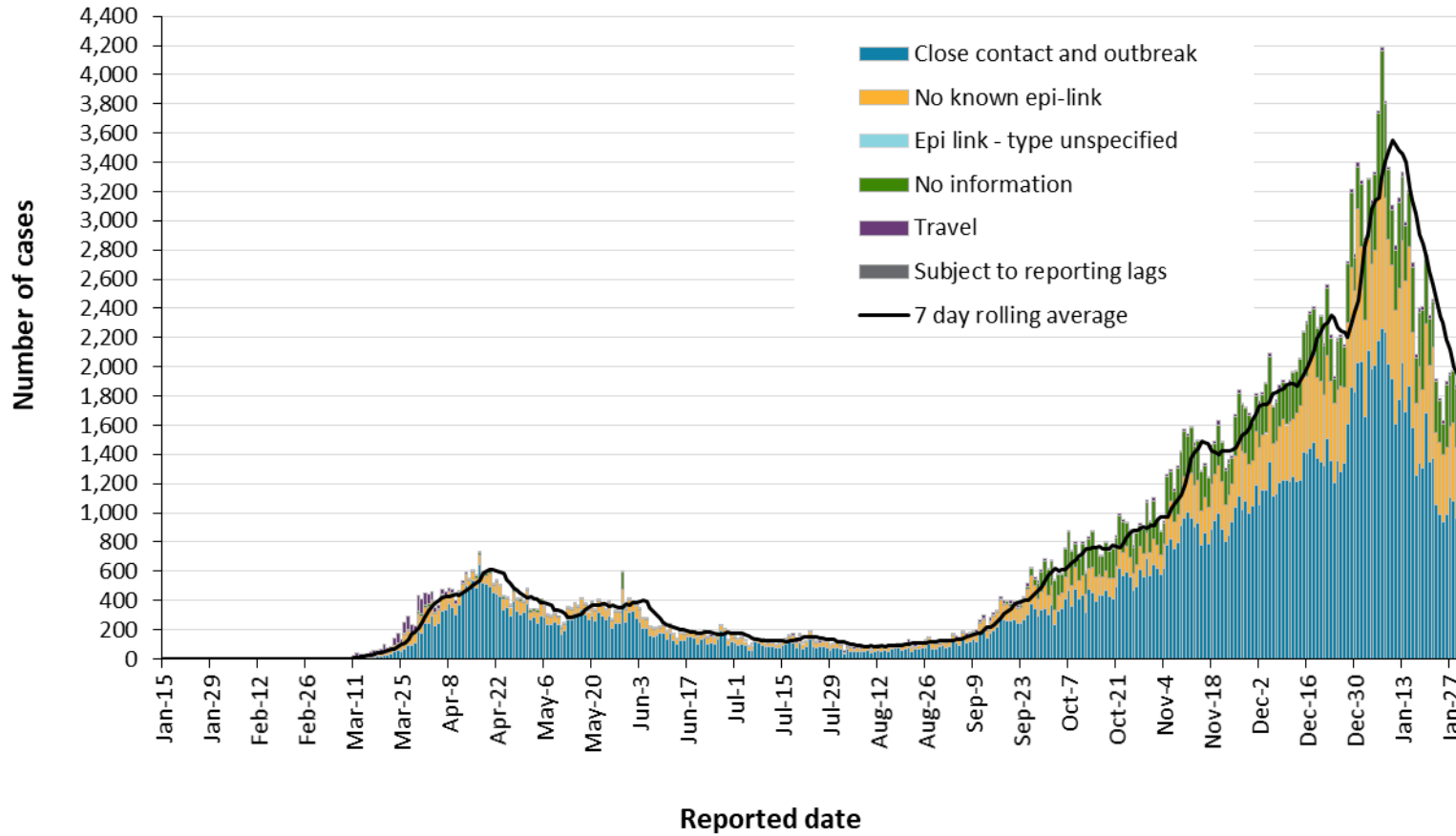
Variant	Cumulative case count up to February 01
Lineage B.1.1.7 (UK variant)	109
Lineage B.1.351 (South African variant)	1

Note: Caution should be taken when interpreting VOC data due to the nature of the screening and confirmation process, including delays between specimen collection and whole genome sequencing (WGS). A confirmed VOC case is defined as a COVID-19 case in whom a designated VOC was detected by WGS of their SARS-CoV-2 positive specimen. Data corrections or updates can result in case records being removed and/or updated and may result in totals differing from past publicly reported case counts. For a breakdown of confirmed VOC cases by PHU please see Appendix A.

Data Source: CCM

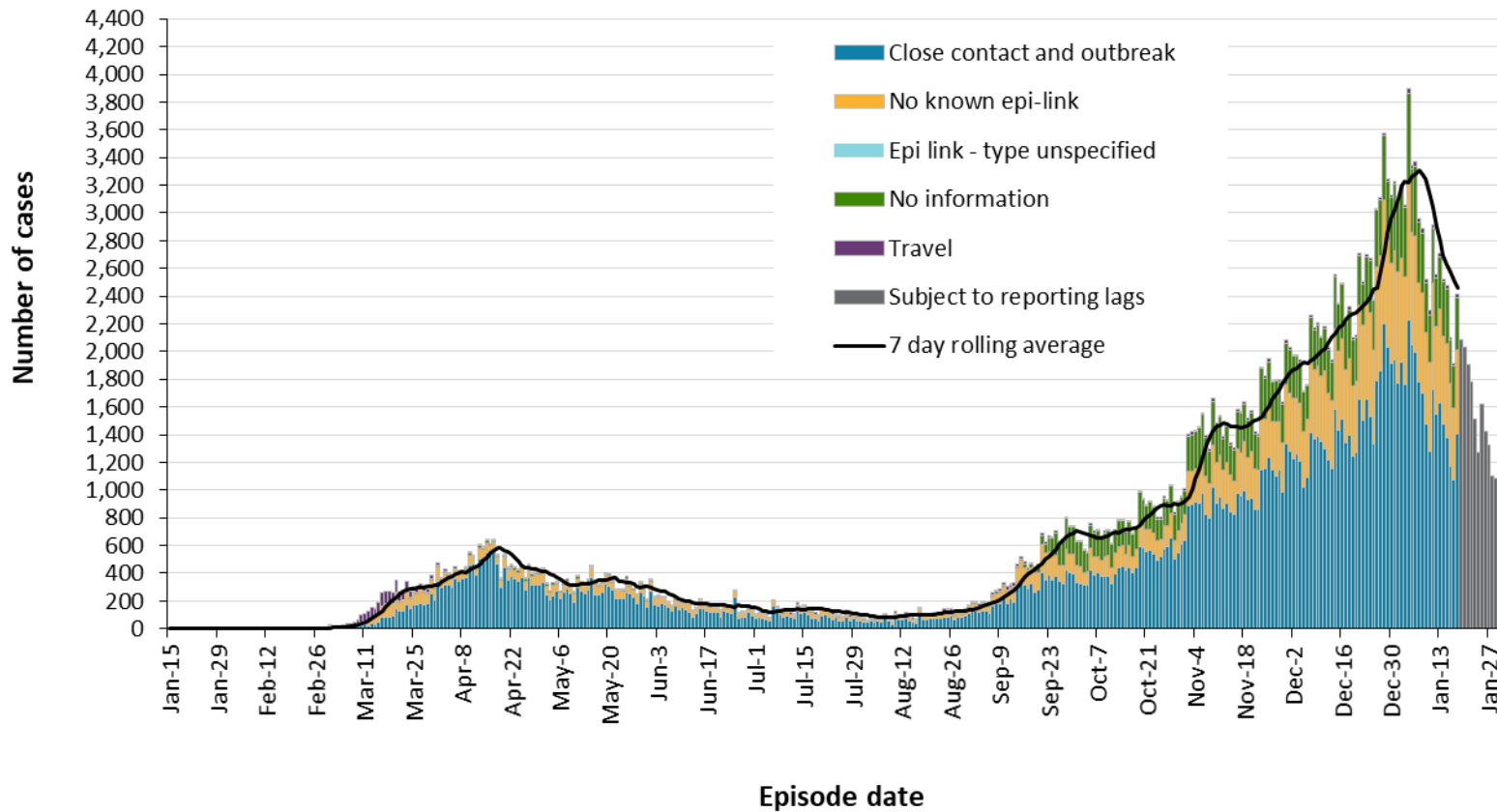
Time

Figure 1. Confirmed cases of COVID-19 by likely acquisition and public health unit reported date: Ontario, January 15, 2020 to February 01, 2021



Data Source: CCM

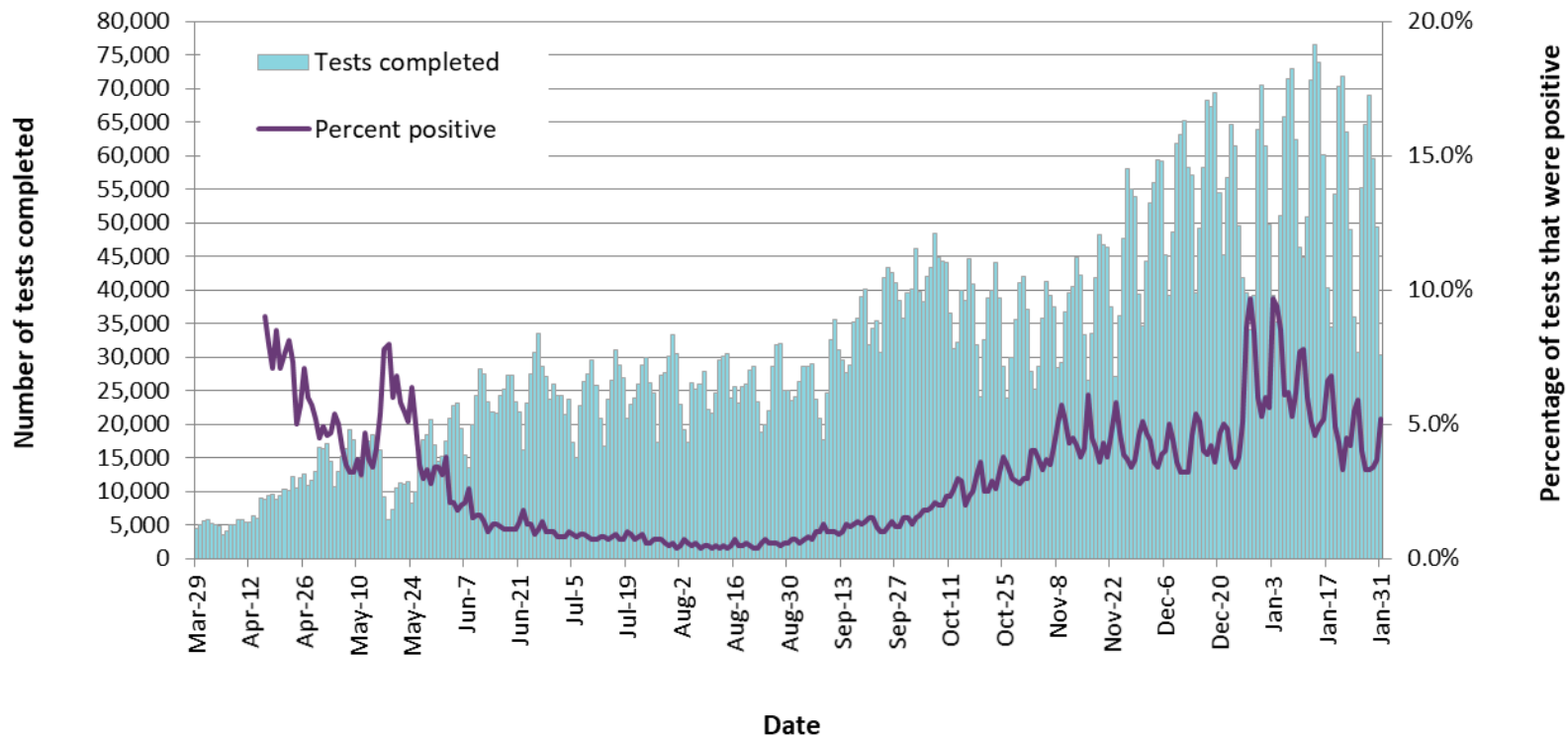
Figure 2. Confirmed cases of COVID-19 by likely acquisition and approximation of symptom onset date: Ontario, January 15, 2020 to February 01, 2021



Note: Not all cases may have an episode date and those without one are not included in the figure. Episode date is defined and available in the technical notes.

Data Source: CCM

Figure 3. Number of COVID-19 tests completed and percent positivity: Ontario, March 29, 2020 to January 31, 2021

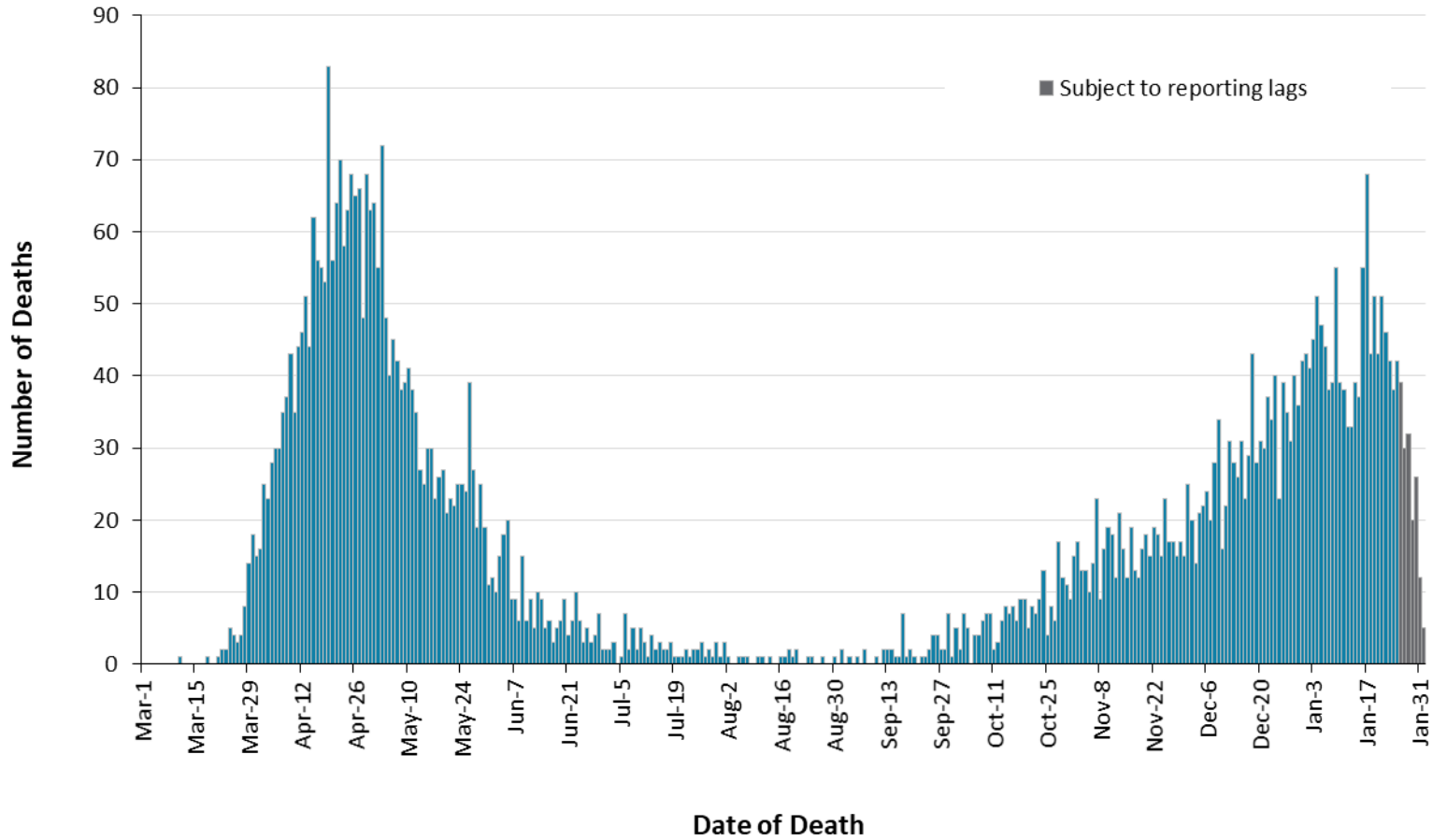


Note: The number of tests performed does not reflect the number of specimens or persons tested. More than one test may be performed per specimen or per person. As such, the percentage of tests that were positive does not necessarily translate to the number of specimens or persons testing positive.

Data Source: The Provincial COVID-19 Diagnostics Network, data reported by member microbiology laboratories.

Severity

Figure 4. Confirmed deaths among COVID-19 cases by date of death: Ontario, March 1, 2020 to February 01, 2021



Note: Cases without a death date are not included in the figure.

Data Source: CCM

Table 5. Confirmed cases of COVID-19 by severity: Ontario

	Cumulative case count as of February 01, 2021	Percentage of all cases
Cumulative deaths reported (please note there may be a reporting delay for deaths)	6,238	2.3%
Deaths reported in ages: 19 and under	2	< 0.1%
Deaths reported in ages: 20-39	24	< 0.1%
Deaths reported in ages: 40-59	235	0.3%
Deaths reported in ages: 60-79	1,678	4.3%
Deaths reported in ages: 80 and over	4,297	22.6%
Ever in ICU	2,475	0.9%
Ever hospitalized	13,486	5.0%

Note: Not all cases have an age reported. Data corrections or updates can result in case records being removed and/or updated and may result in totals differing from past publicly reported case counts.

Data Source: CCM

Geography

Table 6. Summary of recent confirmed cases of COVID-19 by public health unit and region: Ontario

Public Health Unit Name	Change in cases January 31, 2021	Change in cases February 01, 2021	Cumulative case count	Cumulative rate per 100,000 population
Northwestern Health Unit	0	0	263	300.0
Thunder Bay District Health Unit	7	13	985	656.8
TOTAL NORTH WEST	7	13	1,248	525.2
Algoma Public Health	0	2	167	145.9
North Bay Parry Sound District Health Unit	2	-14	192	148.0
Porcupine Health Unit	0	3	278	333.2
Public Health Sudbury & Districts	0	1	526	264.3
Timiskaming Health Unit	0	0	89	272.3
TOTAL NORTH EAST	2	-8	1,252	223.8
Ottawa Public Health	25	14	13,367	1267.4
Eastern Ontario Health Unit	14	4	2,467	1182.0
Hastings Prince Edward Public Health	0	1	359	213.1
Kingston, Frontenac and Lennox & Addington Public Health	1	2	656	308.4
Leeds, Grenville & Lanark District Health Unit	0	4	811	468.3
Renfrew County and District Health Unit	1	0	302	278.0

Public Health Unit Name	Change in cases January 31, 2021	Change in cases February 01, 2021	Cumulative case count	Cumulative rate per 100,000 population
TOTAL EASTERN	41	25	17,962	932.4
Durham Region Health Department	90	44	10,802	1516.3
Haliburton, Kawartha, Pine Ridge District Health Unit	19	2	875	463.1
Peel Public Health	330	334	55,143	3433.7
Peterborough Public Health	4	-1	545	368.3
Simcoe Muskoka District Health Unit	36	42	5,570	929.0
York Region Public Health	128	124	25,665	2093.7
TOTAL CENTRAL EAST	607	545	98,600	2200.6
Toronto Public Health	886	-119	84,688	2714.0
TOTAL TORONTO	886	-119	84,688	2714.0
Chatham-Kent Public Health	15	9	1,224	1151.3
Grey Bruce Health Unit	3	3	645	379.7
Huron Perth Public Health	5	2	1,236	884.4
Lambton Public Health	9	3	1,843	1407.3
Middlesex-London Health Unit	47	14	5,712	1125.5
Southwestern Public Health	15	12	2,318	1096.0
Windsor-Essex County Health Unit	72	35	12,164	2863.3
TOTAL SOUTH WEST	166	78	25,142	1487.0
Brant County Health Unit	5	1	1,486	957.5

Public Health Unit Name	Change in cases January 31, 2021	Change in cases February 01, 2021	Cumulative case count	Cumulative rate per 100,000 population
City of Hamilton Public Health Services	39	52	9,299	1570.3
Haldimand-Norfolk Health Unit	4	5	1,288	1129.0
Halton Region Public Health	55	44	8,185	1322.1
Niagara Region Public Health	61	65	7,972	1687.2
Region of Waterloo Public Health and Emergency Services	60	27	9,485	1623.1
Wellington-Dufferin-Guelph Public Health	36	17	4,318	1384.4
TOTAL CENTRAL WEST	260	211	42,033	1475.2
TOTAL ONTARIO	1,969	745	270,925	1822.6

Notes: Health units with data corrections or updates could result in records being removed from totals resulting in negative counts.

Data Source: CCM

Outbreaks

Table 7. Summary of recent confirmed COVID-19 outbreaks reported in long-term care homes, retirement homes and hospitals by status: Ontario

Institution type	Change in outbreaks January 31, 2021	Change in outbreaks February 01, 2021	Number of ongoing outbreaks	Cumulative number of outbreaks reported
Long-term care homes	5	6	240	1,194
Retirement homes	3	1	133	678
Hospitals	1	0	83	363

Note: Ongoing outbreaks include all outbreaks that are 'Open' in CCM without a 'Declared Over Date' recorded, or where the outbreak started more than five months ago, even for outbreaks where the Outbreak Status value selected in CCM is 'OPEN'. The start of the outbreak is determined by the onset date of first case, or if missing the outbreak reported date, or else if that is also missing, then the outbreak created date.

Data Source: CCM

Technical Notes

Data Sources

- The data for this report were based on information successfully extracted from the Public Health Case and Contact Management Solution (CCM) for all PHUs by PHO as of **February 01, 2021 at 1 p.m.**
- CCM is a dynamic disease reporting system, which allow ongoing updates to data previously entered. As a result, data extracted from CCM represent a snapshot at the time of extraction and may differ from previous or subsequent reports.
- Ontario population projection data for 2020 were sourced from Ministry, IntelliHEALTH Ontario. Data were extracted on November 26, 2019.
- COVID-19 test data were based on information from The Provincial COVID-19 Diagnostics Network, reported by member microbiology laboratories.

Data Caveats

- The data only represent cases reported to public health units and recorded in CCM. As a result, all counts will be subject to varying degrees of underreporting due to a variety of factors, such as disease awareness and medical care seeking behaviours, which may depend on severity of illness, clinical practice, changes in laboratory testing, and reporting behaviours.
- Lags in CCM data entry due to weekend staffing may result in lower case counts than would otherwise be recorded.
- Only cases meeting the confirmed case classification as listed in the MOH [COVID-19 case definition](#) are included in the report counts from CCM. This includes persons with a positive detection of serum/plasma immunoglobulin G (IgG) antibodies to SARS-CoV-2, which was added to the confirmed case definition on August 6, 2020.
- Cases of confirmed reinfection, i.e. where genome sequencing indicates the two episodes are caused by different viral lineages, added to the confirmed case definition on November 20, 2020, are counted as unique investigations.
- The number of tests performed does not reflect the number of specimens or persons tested. More than one test may be performed per specimen or per person. As such, the percentage of tests that were positive does not necessarily translate to the number of specimens or persons testing positive.
- Reported date is the date the case was reported to the public health unit.
- Case episode date is based on an estimate of the best date of disease onset. This date is calculated based on either the date of symptom onset, specimen collection/test date, or the date reported to the public health unit.

- Resolved cases are determined only for COVID-19 cases that have not died. Cases that have died are considered fatal and not resolved. The following cases are classified as resolved:
 - Cases that are reported as ‘recovered’ in CCM
 - Cases that are not hospitalized and are 14 days past their episode date
 - Cases that are currently hospitalized (no hospital end date entered) and have a status of ‘closed’ in CCM (indicating public health unit follow-up is complete) and are 14 days past their symptom onset date or specimen collection date
- Hospitalization includes all cases for which a hospital admission date was reported at the time of data extraction. It includes cases that have been discharged from hospital as well as cases that are currently hospitalized. Emergency room visits are not included in the number of reported hospitalizations.
- ICU admission includes all cases for which an ICU admission date was reported at the time of data extraction. It is a subset of the count of hospitalized cases. It includes cases that have been treated or that are currently being treated in an ICU.
- Orientation of case counts by geography is based on the diagnosing health unit (DHU). DHU refers to the case's public health unit of residence at the time of illness onset and not necessarily the location of exposure. Cases for which the DHU was reported as MOH (to signify a case that is not a resident of Ontario) have been excluded from the analyses.
- Likely source of acquisition is determined by examining the epidemiologic link and epidemiologic link status fields in CCM. If no epidemiologic link is identified in those fields the risk factor fields are examined to determine whether a case travelled, was associated with a confirmed outbreak, was a contact of a case, had no known epidemiological link (sporadic community transmission) or was reported to have an unknown source/no information was reported. Some cases may have no information reported if the case is untraceable, was lost to follow-up or referred to FNIHB. Cases with multiple risk factors were assigned to a single likely acquisition source group which was determined hierarchically in the following order:
 - For cases with an episode date *on or after* April 1, 2020: Outbreak-associated > close contact of a confirmed case > travel > no known epidemiological link > information missing or unknown
 - For cases with an episode date *before* April 1, 2020: Travel > outbreak-associated > close contact of a confirmed case > no known epidemiological link > information missing or unknown
- Deaths are determined by using the outcome field in CCM. Any case marked ‘Fatal’ is included in the deaths data. The CCM field Type of Death is not used to further categorize the data.
 - The date of death is determined using the outcome date field for cases marked as ‘Fatal’ in the outcome field.
- COVID-19 cases from CCM for which the Classification and/or Disposition was reported as ENTERED IN ERROR, DOES NOT MEET DEFINITION, IGNORE, DUPLICATE, or any variation on

these values have been excluded. The provincial case count for COVID-19 includes cases that are counted once across all systems from which the case data are obtained. Duplicate records may exist if these records were not identified and resolved prior to data upload to the Ministry.

- Ongoing outbreaks include all outbreaks that are 'Open' in CCM without a 'Declared Over Date' recorded, or where the outbreak started more than five months ago, even for outbreaks where the Outbreak Status value selected in CCM is 'OPEN'. The start of the outbreak is determined by the onset date of first case, or if missing the outbreak reported date, or else if that is also missing, then the outbreak created date.
- 'Long-term care home residents' includes cases that reported 'Yes' to the risk factor 'Resident of a long-term care home'; or 'Yes' to the risk factor 'Resident of nursing home or other chronic care facility' and reported to be part of an outbreak assigned as a long-term care home (via the Outbreak number or case comments field); or were reported to be part of an outbreak assigned as a long-term care home (via the outbreak number or case comments field) with an age over 70 years and did not report 'No' to the risk factors 'Resident of long-term care home' or 'Resident of nursing home or other chronic care facility'. 'Long-term care home residents' excludes cases that reported 'Yes' to any of the health care worker occupational risk factors.
- The 'health care workers' variable includes cases that reported 'Yes' to any of the occupation of health care worker, doctor, nurse, dentist, dental hygienist, midwife, other medical technicians, personal support worker, respiratory therapist, first responder.
- 'Health care workers associated with long-term care outbreaks' includes 'health care workers' reported to be part of an outbreak assigned as a long-term care home (via the outbreak number or case comments field). Excludes cases that reported 'Yes' to risk factors 'Resident of long-term care home' or 'Resident of nursing home or other chronic care facility' and 'Yes' to the calculated 'health care workers' variable.
- Percent change is calculated by taking the difference between the current period (i.e., daily count or sum of the daily count over a 7-day period) and previous period (i.e., daily count or sum of the daily count over a 7-day period), divided by the previous period.
- PANGO lineage: Evidence suggests this lineage arose in the United Kingdom in September, 2020. Epidemiological analysis has associated this lineage with a significant increase in the rate of COVID-19 infection in United Kingdom, and it is believed to be related to an N501Y mutation in the spike (S) gene. The VOC-202012/01 is highly associated with this lineage. The PANGO lineage B.1.1.7 will be assigned to sequences with more than 4 of the 17 defining B.1.1.7 SNPs.
- Public Health Ontario conducts variants of concern (VOC) surveillance on a subset of SARS-CoV-2 positive specimens. Additional SARS-CoV-2 specimens are referred to PHO Laboratory for screening provided they meet the criteria outlined here:
<https://www.publichealthontario.ca/en/laboratory-services/test-information-index/covid-19-voc>

Appendix A

Table A1. Weekly rates of confirmed COVID-19 cases per 100,000 population over recent rolling 7-day periods, by reported date and public health unit: Ontario, January 17 to January 29, 2021

Public Health Unit Name	Jan 17 to Jan 23	Jan 18 to Jan 24	Jan 19 to Jan 25	Jan 20 to Jan 26	Jan 21 to Jan 27	Jan 22 to Jan 28	Jan 23 to Jan 29	% change from Jan 17-Jan 23 to Jan 23-Jan 29
NORTH WEST								
Northwestern Health Unit	17.1	14.8	17.1	18.2	21.7	24.0	20.5	+19.9%
Thunder Bay District Health Unit	95.4	93.4	80.7	89.4	70.7	73.4	71.4	-25.2%
NORTH EAST								
Algoma Public Health	7.9	7.0	7.0	7.0	5.2	11.4	13.1	+65.8%
North Bay Parry Sound District Health Unit	3.1	1.5	2.3	1.5	2.3	3.9	3.9	+25.8%
Porcupine Health Unit	59.9	63.5	47.9	53.9	70.7	82.7	85.1	+42.1%
Public Health Sudbury & Districts	29.6	33.2	37.7	37.7	39.7	38.7	39.2	+32.4%
Timiskaming Health Unit	9.2	9.2	9.2	9.2	9.2	9.2	3.1	-66.3%
EASTERN								
Ottawa Public Health	61.6	58.4	54.8	53.9	45.9	44.4	42.1	-31.7%
Eastern Ontario Health Unit	75.2	71.9	68.0	76.7	68.5	64.2	67.1	-10.8%
Hastings Prince Edward Public Health	7.7	5.9	4.2	3.0	2.4	1.2	1.2	-84.4%
Kingston, Frontenac and Lennox & Addington Public Health	10.8	9.4	8.5	8.0	6.6	6.1	4.2	-61.1%

Public Health Unit Name	Jan 17 to Jan 23	Jan 18 to Jan 24	Jan 19 to Jan 25	Jan 20 to Jan 26	Jan 21 to Jan 27	Jan 22 to Jan 28	Jan 23 to Jan 29	% change from Jan 17-Jan 23 to Jan 23-Jan 29
Leeds, Grenville & Lanark District Health Unit	8.1	8.1	8.1	9.2	12.1	12.7	15.0	+85.2%
Renfrew County and District Health Unit	1.8	0.9	0.9	0.0	0.0	1.8	3.7	+105.6%
CENTRAL EAST								
Durham Region Health Department	74.8	70.7	72.0	71.3	64.4	66.7	65.7	-12.2%
Haliburton, Kawartha, Pine Ridge District Health Unit	48.7	49.8	48.7	47.6	30.7	26.5	28.1	-42.3%
Peel Public Health	182.2	175.9	176.3	173.0	156.8	154.0	149.3	-18.1%
Peterborough Public Health	27.0	25.7	23.7	25.0	25.7	26.4	24.3	-10.0%
Simcoe Muskoka District Health Unit	75.7	73.1	65.2	60.4	55.2	53.0	54.4	-28.1%
York Region Public Health	124.3	117.6	115.1	114.5	111.4	104.6	100.0	-19.5%
TORONTO								
Toronto Public Health	167.0	170.8	158.1	147.7	143.8	141.8	137.6	-17.6%
SOUTH WEST								
Chatham-Kent Public Health	85.6	78.1	79.9	87.5	97.8	95.0	105.3	+23.0%
Grey Bruce Health Unit	10.0	10.6	10.6	12.4	13.0	15.3	14.1	+41.0%
Huron Perth Public Health	87.3	93.7	72.3	78.0	65.8	58.7	51.5	-41.0%
Lambton Public Health	101.6	84.8	81.7	71.8	61.1	61.8	53.4	-47.4%
Middlesex-London Health Unit	78.0	72.9	64.0	55.0	51.2	51.0	47.9	-38.6%

Public Health Unit Name	Jan 17 to Jan 23	Jan 18 to Jan 24	Jan 19 to Jan 25	Jan 20 to Jan 26	Jan 21 to Jan 27	Jan 22 to Jan 28	Jan 23 to Jan 29	% change from Jan 17-Jan 23 to Jan 23-Jan 29
Southwestern Public Health	71.9	65.7	59.6	53.9	61.9	58.6	49.6	-31%
Windsor-Essex County Health Unit	150.4	144.3	127.1	113.5	107.6	106.6	89.9	-40.2%
CENTRAL WEST								
Brant County Health Unit	39.9	38.0	43.2	47.0	41.2	40.6	36.1	-9.5%
City of Hamilton Public Health Services	98.6	94.7	94.6	94.1	92.9	91.7	84.3	-14.5%
Haldimand-Norfolk Health Unit	64.0	58.7	53.5	40.3	42.1	36.8	30.7	-52.0%
Halton Region Public Health	80.9	77.5	73.3	77.4	73.5	63.0	56.1	-30.7%
Niagara Region Public Health	147.9	146.9	141.0	141.8	142.0	135.7	127.8	-13.6%
Region of Waterloo Public Health and Emergency Services	108.0	106.8	102.3	101.1	89.5	83.9	78.9	-26.9%
Wellington-Dufferin-Guelph Public Health	123.1	122.8	125.0	120.2	115.7	108.4	99.7	-19.0%
TOTAL ONTARIO	110.4	108.3	103.1	99.7	94.3	91.7	87.7	-20.6%

Note: Rates are based on the sum of the daily case counts during the date ranges specified in each column.

Data Source: CCM

Table A2. Summary of confirmed variant of concern (VOC) cases by public health unit: Ontario as of February 01, 2021

Public Health Unit Name	Cumulative count for Lineage B.1.1.7	Cumulative count for Lineage B.1.351
Algoma Public Health	0	0
Brant County Health Unit	0	0
Chatham-Kent Public Health	0	0
City of Hamilton Public Health Services	0	0
Durham Region Health Department	7	0
Eastern Ontario Health Unit	0	0
Grey Bruce Health Unit	0	0
Haldimand-Norfolk Health Unit	1	0
Haliburton, Kawartha, Pine Ridge District Health Unit	0	0
Halton Region Public Health	1	0
Hastings Prince Edward Public Health	0	0
Huron Perth Public Health	0	0
Kingston, Frontenac and Lennox & Addington Public Health	1	0
Lambton Public Health	0	0
Leeds, Grenville & Lanark District Health Unit	0	0
Middlesex-London Health Unit	4	0
Niagara Region Public Health	0	0

Public Health Unit Name	Cumulative count for Lineage B.1.1.7	Cumulative count for Lineage B.1.351
North Bay Parry Sound District Health Unit	0	0
Northwestern Health Unit	0	0
Ottawa Public Health	3	0
Peel Public Health	4	1
Peterborough Public Health	0	0
Porcupine Health Unit	0	0
Public Health Sudbury & Districts	0	0
Region of Waterloo Public Health and Emergency Services	1	0
Renfrew County and District Health Unit	0	0
Simcoe Muskoka District Health Unit	51	0
Southwestern Public Health	0	0
Thunder Bay District Health Unit	0	0
Timiskaming Health Unit	0	0
Toronto Public Health	17	0
Wellington-Dufferin-Guelph Public Health	0	0
Windsor-Essex County Health Unit	0	0
York Region Public Health	19	0
TOTAL ONTARIO	109	1

Note: Caution should be taken when interpreting VOC data due to the nature of the screening and confirmation process, including delays between specimen collection and whole genome sequencing

(WGS). A confirmed VOC case is defined as a COVID-19 case in whom a designated VOC was detected by WGS of their SARS-CoV-2 positive specimen. Data corrections or updates can result in case records being removed and/or updated and may result in totals differing from past publicly reported case counts.

Data Source: CCM

Disclaimer

This document was developed by Public Health Ontario (PHO). PHO provides scientific and technical advice to Ontario's government, public health organizations and health care providers. PHO's work is guided by the current best available evidence at the time of publication.

The application and use of this document is the responsibility of the user. PHO assumes no liability resulting from any such application or use.

This document may be reproduced without permission for non-commercial purposes only and provided that appropriate credit is given to PHO. No changes and/or modifications may be made to this document without express written permission from PHO.

Citation

Ontario Agency for Health Protection and Promotion (Public Health Ontario). Epidemiologic summary: COVID-19 in Ontario – January 15, 2020 to February 01, 2021. Toronto, ON: Queen's Printer for Ontario; 2021.

For Further Information

For more information, email cd@oahpp.ca.

Public Health Ontario

Public Health Ontario is an agency of the Government of Ontario dedicated to protecting and promoting the health of all Ontarians and reducing inequities in health. Public Health Ontario links public health practitioners, front-line health workers and researchers to the best scientific intelligence and knowledge from around the world.

For more information about PHO, visit publichealthontario.ca.

