

## Daily Epidemiologic Summary

# COVID-19 in Ontario: January 15, 2020 to February 06, 2021

This report includes the most current information available from CCM as of **February 06, 2021**.

Please visit the interactive [Ontario COVID-19 Data Tool](#) to explore recent COVID-19 data by public health unit, age group, sex, and trends over time.

A [weekly summary report](#) is available with additional information to complement the daily report.

This **daily** report provides an epidemiologic summary of recent COVID-19 activity in Ontario. The change in cases is determined by taking the cumulative difference between the current day and the previous day.

## Highlights

- There are a total of 278,207 confirmed cases of COVID-19 in Ontario reported to date.
- Compared to the previous day, this represents:
  - An increase of 1,489 confirmed cases (percent change of +7.3%)
  - An increase of 22 deaths (percent change of -51.1%)
  - An increase of 1,937 resolved cases (percent change of +7.9%)

In this document, the term 'change in cases' refers to cases publicly reported by the province for a given day. Data corrections or updates can result in case records being removed and or updated from past reports and may result in subset totals for updated case counts (i.e., age group, gender) differing from the overall updated case counts.

The term public health unit reported date in this document refers to the date local public health units were first notified of the case.

## Case Characteristics

**Table 1a. Summary of recent confirmed cases of COVID-19: Ontario**

	Change in cases February 05, 2021	Change in cases February 06, 2021	Percentage change February 06, 2021 compared to February 05, 2021	Cumulative case count as of February 06, 2021
Total number of cases	1,388	1,489	+7.3%	278,207
Number of deaths	45	22	-51.1%	6,505
Number resolved	1,796	1,937	+7.9%	256,903

**Note:** The number of cases publicly reported by the province each day may not align with case counts reported to public health on a given day; public health unit reported date refers to the date local public health was first notified of the case. Data corrections or updates can result in case records being removed and or updated from past reports.

**Data Source:** CCM

**Table 1b. Summary of recent confirmed cases of COVID-19 by age group and gender: Ontario**

	Change in cases February 05, 2021	Change in cases February 06, 2021	Cumulative case count as of February 06, 2021
Gender: Male	649	762	136,135
Gender: Female	723	705	140,456
Ages: 19 and under	195	218	36,394
Ages: 20-39	491	561	101,692
Ages: 40-59	412	451	80,468
Ages: 60-79	201	191	40,167
Ages: 80 and over	92	67	19,435

**Note:** Not all cases have a reported age or gender reported. Data corrections or updates can result in case records being removed and or updated from past reports and may result in subset totals (i.e., age group, gender) differing from past publicly reported case counts.

**Data Source:** CCM

**Table 2. Summary of recent confirmed cases of COVID-19 in school aged children by age group, August 30, 2020 to February 06, 2021: Ontario**

	Change in cases February 05, 2021	Change in cases February 06, 2021	Cumulative case count from August 30, 2020 to February 06, 2021
Ages: 4 to 8	39	34	5,936
Ages: 9 to 13	53	49	8,137
Ages: 14 to 17	47	51	8,563

**Note:** Includes all confirmed cases of COVID-19 for specified ages, regardless of school attendance. Data corrections or updates can result in case records being removed and or updated from past reports and may result in subset totals (i.e., age group) differing from past publicly reported case counts.

**Data Source:** CCM

**Table 3. Summary of recent confirmed cases of COVID-19 in long-term care homes: Ontario**

Long-term care home cases	Change in cases February 05, 2021	Change in cases February 06, 2021	Cumulative case count as of February 06, 2021
Residents	69	24	14,795
Health care workers	35	31	6,407
Deaths among residents	22	13	3,732
Deaths among health care workers	0	0	10

**Note:** Information on how long-term care home residents and health care workers are identified is available in the technical notes. Also, the change in cases in these categories may represent existing case records that have been updated.

**Data Source:** CCM

**Table 4. Summary of confirmed variant of concern (VOC) cases: Ontario**

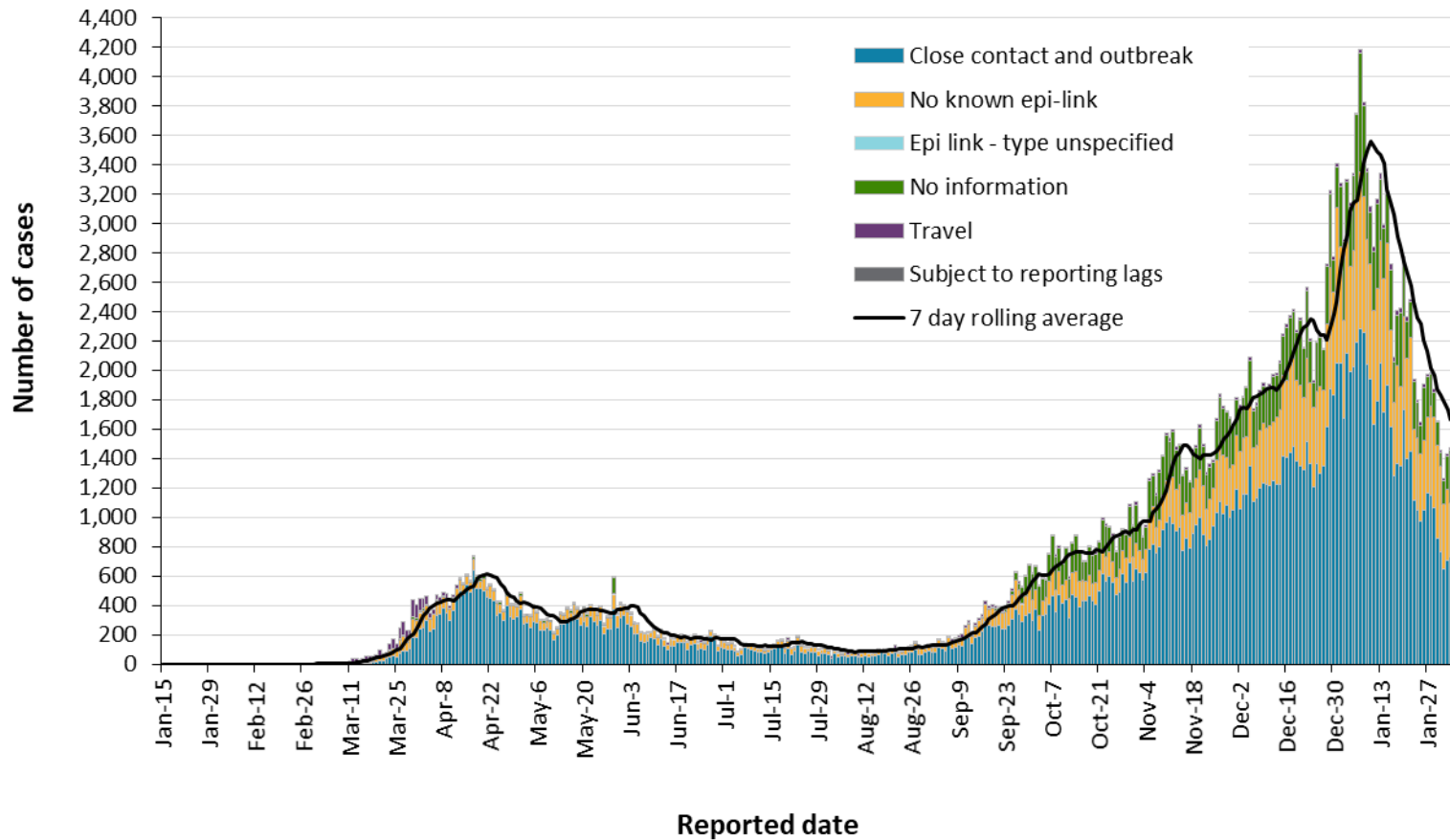
Variant	Cumulative case count up to February 06
Lineage B.1.1.7 (UK variant)	174
Lineage B.1.351 (South African variant)	1

**Note:** Caution should be taken when interpreting VOC data due to the nature of the screening and confirmation process, including delays between specimen collection and whole genome sequencing (WGS). A confirmed VOC case is defined as a COVID-19 case in whom a designated VOC was detected by WGS of their SARS-CoV-2 positive specimen. Data corrections or updates can result in case records being removed and/or updated and may result in totals differing from past publicly reported case counts. For a breakdown of confirmed VOC cases by PHU please see Appendix A.

**Data Source:** CCM

# Time

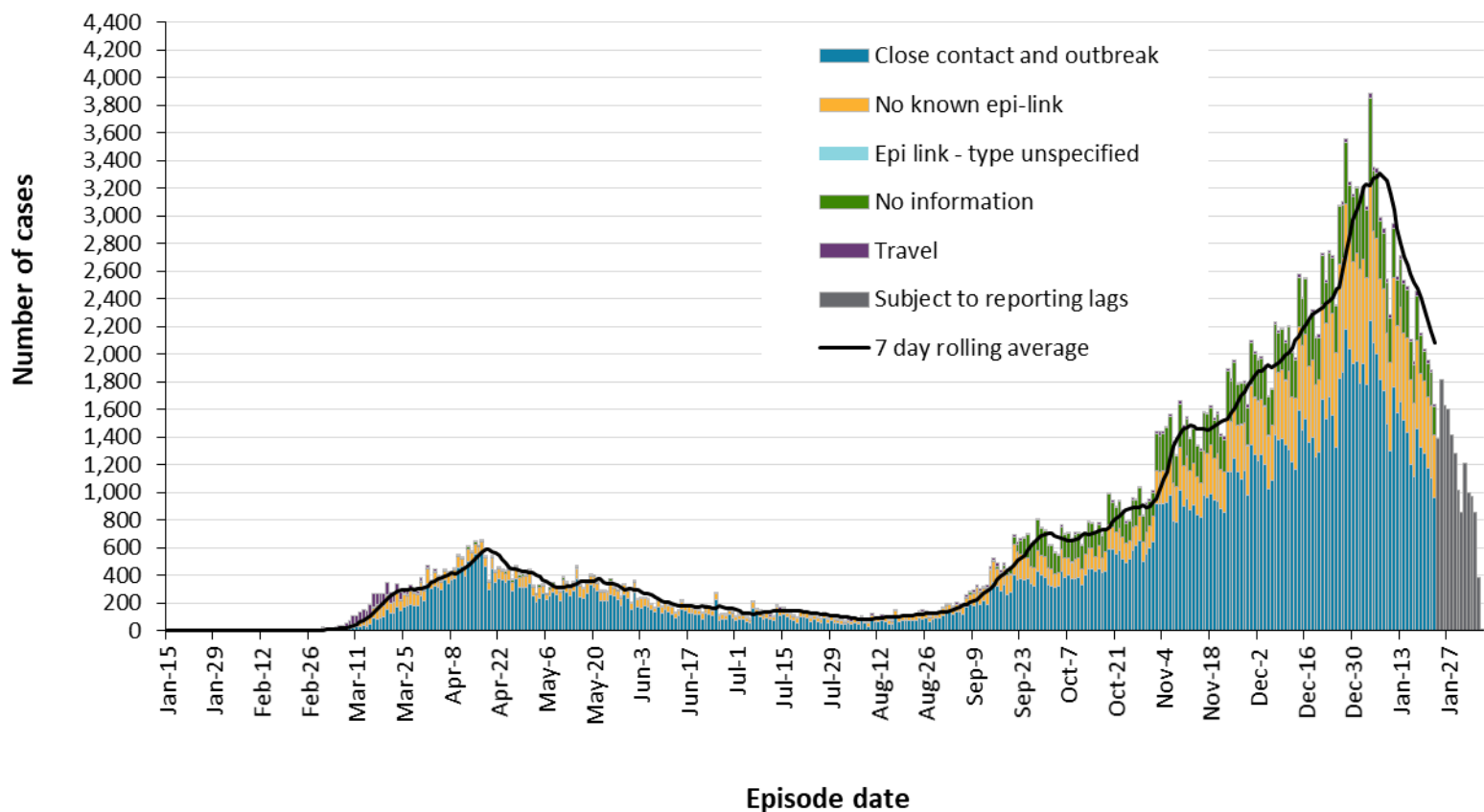
Figure 1. Confirmed cases of COVID-19 by likely acquisition and public health unit reported date: Ontario, January 15, 2020 to February 06, 2021



Data Source: CCM

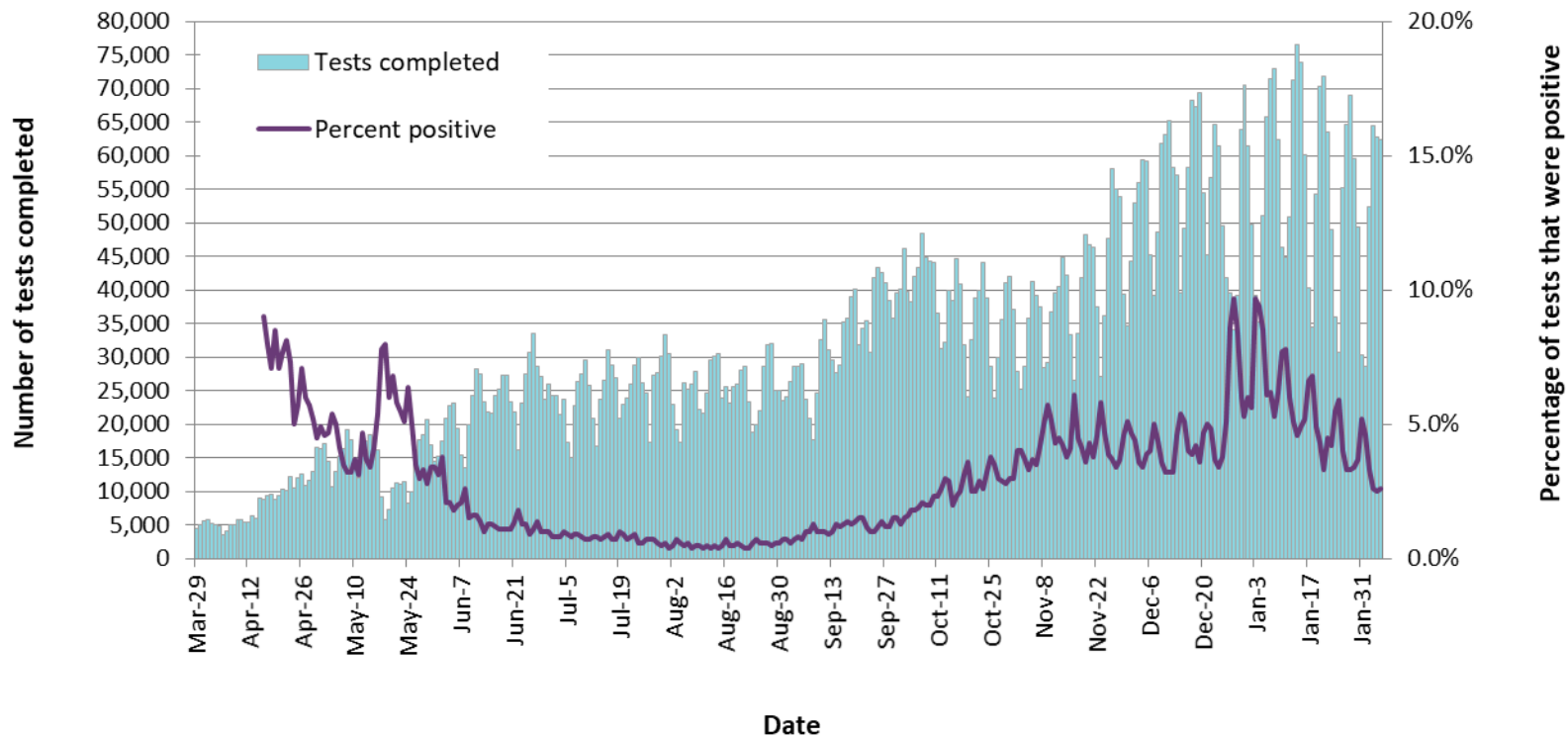
COVID-19 in Ontario: January 15, 2020 to February 06, 2021

**Figure 2. Confirmed cases of COVID-19 by likely acquisition and approximation of symptom onset date: Ontario, January 15, 2020 to February 06, 2021**



**Note:** Not all cases may have an episode date and those without one are not included in the figure. Episode date is defined and available in the technical notes.  
**Data Source:** CCM

**Figure 3. Number of COVID-19 tests completed and percent positivity: Ontario, March 29, 2020 to February 05, 2021**

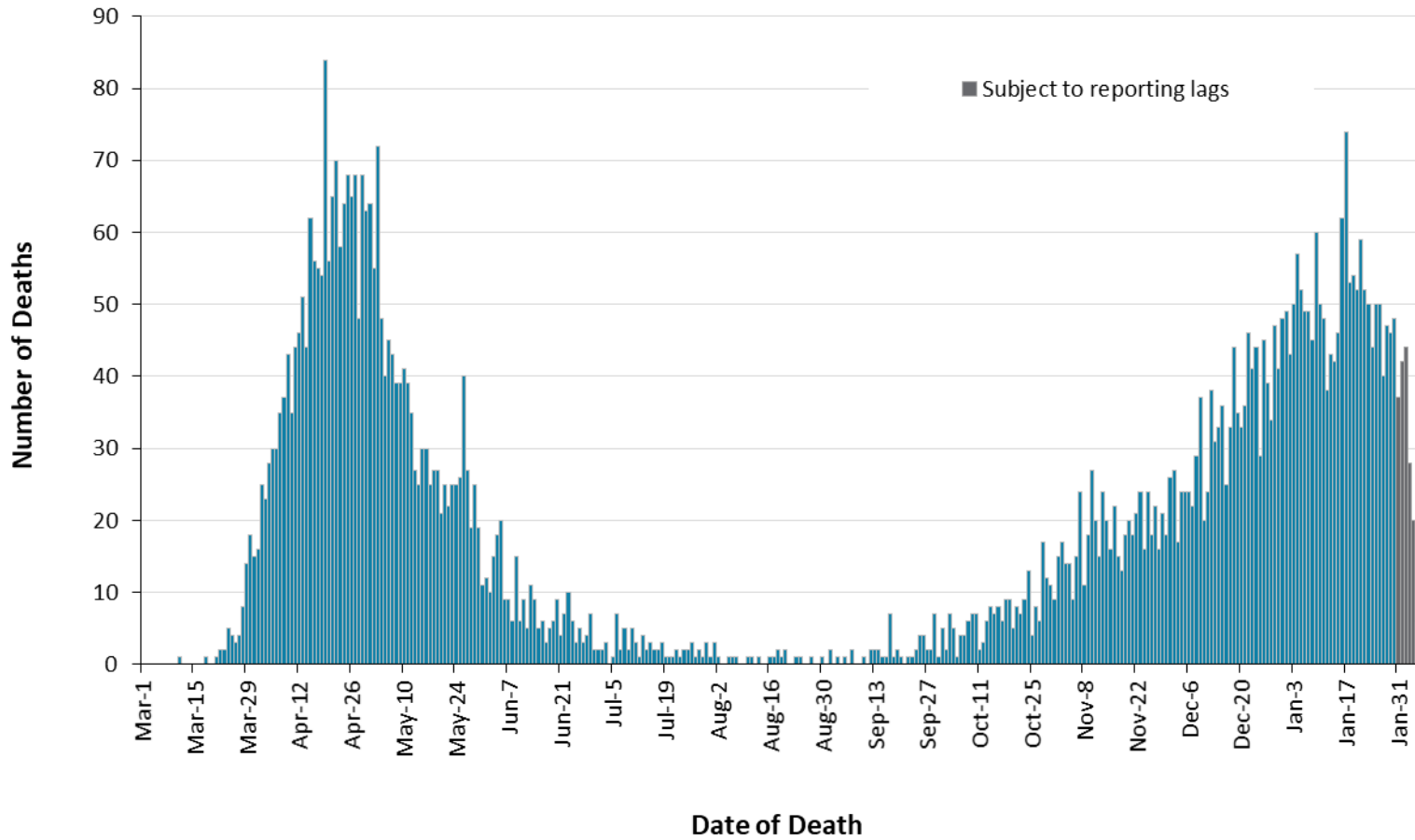


**Note:** The number of tests performed does not reflect the number of specimens or persons tested. More than one test may be performed per specimen or per person. As such, the percentage of tests that were positive does not necessarily translate to the number of specimens or persons testing positive.

**Data Source:** The Provincial COVID-19 Diagnostics Network, data reported by member microbiology laboratories.

# Severity

Figure 4. Confirmed deaths among COVID-19 cases by date of death: Ontario, March 1, 2020 to February 06, 2021



**Note:** Cases without a death date are not included in the figure.

**Data Source:** CCM



**Table 5. Confirmed cases of COVID-19 by severity: Ontario**

	Cumulative case count as of February 06, 2021	Percentage of all cases
Cumulative deaths reported (please note there may be a reporting delay for deaths)	6,505	2.3%
Deaths reported in ages: 19 and under	2	<0.1%
Deaths reported in ages: 20-39	25	<0.1%
Deaths reported in ages: 40-59	247	0.3%
Deaths reported in ages: 60-79	1,760	4.4%
Deaths reported in ages: 80 and over	4,470	23.0%
Ever in ICU	2,537	0.9%
Ever hospitalized	13,966	5.0%

**Note:** Not all cases have an age reported. Data corrections or updates can result in case records being removed and/or updated and may result in totals differing from past publicly reported case counts.

**Data Source:** CCM

## Geography

**Table 6. Summary of recent confirmed cases of COVID-19 by public health unit and region: Ontario**

Public Health Unit Name	Change in cases February 05, 2021	Change in cases February 06, 2021	Cumulative case count	Cumulative rate per 100,000 population
Northwestern Health Unit	1	9	277	315.9
Thunder Bay District Health Unit	15	25	1,054	702.9
<b>TOTAL NORTH WEST</b>	16	34	1,331	560.1
Algoma Public Health	1	2	178	155.5
North Bay Parry Sound District Health Unit	2	1	196	151.1
Porcupine Health Unit	3	0	292	349.9
Public Health Sudbury & Districts	2	10	545	273.8
Timiskaming Health Unit	0	0	90	275.3
<b>TOTAL NORTH EAST</b>	8	13	1,301	232.6
Ottawa Public Health	60	57	13,634	1,292.7
Eastern Ontario Health Unit	12	2	2,526	1,210.3
Hastings Prince Edward Public Health	0	1	363	215.4
Kingston, Frontenac and Lennox & Addington Public Health	2	1	664	312.1
Leeds, Grenville & Lanark District Health Unit	1	1	820	473.5
Renfrew County and District Health Unit	0	2	305	280.8

Public Health Unit Name	Change in cases February 05, 2021	Change in cases February 06, 2021	Cumulative case count	Cumulative rate per 100,000 population
<b>TOTAL EASTERN</b>	75	64	18,312	950.6
Durham Region Health Department	46	50	11,020	1,546.9
Haliburton, Kawartha, Pine Ridge District Health Unit	4	5	915	484.3
Peel Public Health	288	261	56,473	3,516.5
Peterborough Public Health	0	3	559	377.8
Simcoe Muskoka District Health Unit	35	43	5,770	962.3
York Region Public Health	131	121	26,284	2,144.2
<b>TOTAL CENTRAL EAST</b>	504	483	101,021	2,254.6
Toronto Public Health	455	517	87,355	2,799.5
<b>TOTAL TORONTO</b>	455	517	87,355	2,799.5
Chatham-Kent Public Health	11	17	1,286	1,209.6
Grey Bruce Health Unit	4	1	656	386.1
Huron Perth Public Health	10	5	1,270	908.7
Lambton Public Health	5	14	1,871	1,428.6
Middlesex-London Health Unit	26	27	5,858	1,154.2
Southwestern Public Health	12	12	2,381	1,125.8
Windsor-Essex County Health Unit	36	20	12,313	2,898.3
<b>TOTAL SOUTH WEST</b>	104	96	25,635	1,516.2
Brant County Health Unit	1	21	1,539	991.6

Public Health Unit Name	Change in cases February 05, 2021	Change in cases February 06, 2021	Cumulative case count	Cumulative rate per 100,000 population
City of Hamilton Public Health Services	57	88	9,593	1,620.0
Haldimand-Norfolk Health Unit	5	5	1,317	1,154.4
Halton Region Public Health	42	61	8,470	1,368.1
Niagara Region Public Health	56	35	8,182	1,731.7
Region of Waterloo Public Health and Emergency Services	54	54	9,747	1,668.0
Wellington-Dufferin-Guelph Public Health	11	18	4,404	1,412.0
<b>TOTAL CENTRAL WEST</b>	226	282	43,252	1,518.0
<b>TOTAL ONTARIO</b>	<b>1,388</b>	<b>1,489</b>	<b>278,207</b>	<b>1,871.6</b>

**Notes:** Health units with data corrections or updates could result in records being removed from totals resulting in negative counts.

**Data Source:** CCM

## Outbreaks

**Table 7. Summary of recent confirmed COVID-19 outbreaks reported in long-term care homes, retirement homes and hospitals by status: Ontario**

Institution type	Change in outbreaks February 05, 2021	Change in outbreaks February 06, 2021	Number of ongoing outbreaks	Cumulative number of outbreaks reported
Long-term care homes	7	7	220	1,218
Retirement homes	3	7	122	698
Hospitals	5	3	70	379

**Note:** Ongoing outbreaks include all outbreaks that are 'Open' in CCM without a 'Declared Over Date' recorded, or where the outbreak started more than five months ago, even for outbreaks where the Outbreak Status value selected in CCM is 'OPEN'. The start of the outbreak is determined by the onset date of first case, or if missing the outbreak reported date, or else if that is also missing, then the outbreak created date.

**Data Source:** CCM

# Technical Notes

## Data Sources

- The data for this report were based on information successfully extracted from the Public Health Case and Contact Management Solution (CCM) for all PHUs by PHO as of **February 06, 2021 at 1 p.m.**
- CCM is a dynamic disease reporting system, which allows ongoing updates to data previously entered. As a result, data extracted from CCM represent a snapshot at the time of extraction and may differ from previous or subsequent reports.
- Ontario population projection data for 2020 were sourced from Ministry, IntelliHEALTH Ontario. Data were extracted on November 26, 2019.
- COVID-19 test data were based on information from The Provincial COVID-19 Diagnostics Network, reported by member microbiology laboratories.

## Data Caveats

- The data only represent cases reported to public health units and recorded in CCM. As a result, all counts will be subject to varying degrees of underreporting due to a variety of factors, such as disease awareness and medical care seeking behaviours, which may depend on severity of illness, clinical practice, changes in laboratory testing, and reporting behaviours.
- Lags in CCM data entry due to weekend staffing may result in lower case counts than would otherwise be recorded.
- Only cases meeting the confirmed case classification as listed in the MOH [COVID-19 case definition](#) are included in the report counts from CCM. This includes persons with a positive detection of serum/plasma immunoglobulin G (IgG) antibodies to SARS-CoV-2, which was added to the confirmed case definition on August 6, 2020.
- Cases of confirmed reinfection, i.e. where genome sequencing indicates the two episodes are caused by different viral lineages, added to the confirmed case definition on November 20, 2020, are counted as unique investigations.
- The number of tests performed does not reflect the number of specimens or persons tested. More than one test may be performed per specimen or per person. As such, the percentage of tests that were positive does not necessarily translate to the number of specimens or persons testing positive.
- Reported date is the date the case was reported to the public health unit.
- Case episode date is based on an estimate of the best date of disease onset. This date is calculated based on either the date of symptom onset, specimen collection/test date, or the date reported to the public health unit.

- Resolved cases are determined only for COVID-19 cases that have not died. Cases that have died are considered fatal and not resolved. The following cases are classified as resolved:
  - Cases that are reported as ‘recovered’ in CCM
  - Cases that are not hospitalized and are 14 days past their episode date
  - Cases that are currently hospitalized (no hospital end date entered) and have a status of ‘closed’ in CCM (indicating public health unit follow-up is complete) and are 14 days past their symptom onset date or specimen collection date
- Hospitalization includes all cases for which a hospital admission date was reported at the time of data extraction. It includes cases that have been discharged from hospital as well as cases that are currently hospitalized. Emergency room visits are not included in the number of reported hospitalizations.
- ICU admission includes all cases for which an ICU admission date was reported at the time of data extraction. It is a subset of the count of hospitalized cases. It includes cases that have been treated or that are currently being treated in an ICU.
- Orientation of case counts by geography is based on the diagnosing health unit (DHU). DHU refers to the case's public health unit of residence at the time of illness onset and not necessarily the location of exposure. Cases for which the DHU was reported as MOH (to signify a case that is not a resident of Ontario) have been excluded from the analyses.
- Likely source of acquisition is determined by examining the epidemiologic link and epidemiologic link status fields in CCM. If no epidemiologic link is identified in those fields the risk factor fields are examined to determine whether a case travelled, was associated with a confirmed outbreak, was a contact of a case, had no known epidemiological link (sporadic community transmission) or was reported to have an unknown source/no information was reported. Some cases may have no information reported if the case is untraceable, was lost to follow-up or referred to FNIHB. Cases with multiple risk factors were assigned to a single likely acquisition source group which was determined hierarchically in the following order:
  - For cases with an episode date *on or after* April 1, 2020: Outbreak-associated > close contact of a confirmed case > travel > no known epidemiological link > information missing or unknown
  - For cases with an episode date *before* April 1, 2020: Travel > outbreak-associated > close contact of a confirmed case > no known epidemiological link > information missing or unknown
- Deaths are determined by using the outcome field in CCM. Any case marked ‘Fatal’ is included in the deaths data. The CCM field Type of Death is not used to further categorize the data.
  - The date of death is determined using the outcome date field for cases marked as ‘Fatal’ in the outcome field.
- COVID-19 cases from CCM for which the Classification and/or Disposition was reported as ENTERED IN ERROR, DOES NOT MEET DEFINITION, IGNORE, DUPLICATE, or any variation on

these values have been excluded. The provincial case count for COVID-19 includes cases that are counted once across all systems from which the case data are obtained. Duplicate records may exist if these records were not identified and resolved prior to data upload to the Ministry.

- Ongoing outbreaks include all outbreaks that are 'Open' in CCM without a 'Declared Over Date' recorded, or where the outbreak started more than five months ago, even for outbreaks where the Outbreak Status value selected in CCM is 'OPEN'. The start of the outbreak is determined by the onset date of first case, or if missing the outbreak reported date, or else if that is also missing, then the outbreak created date.
- 'Long-term care home residents' includes cases that reported 'Yes' to the risk factor 'Resident of a long-term care home'; or 'Yes' to the risk factor 'Resident of nursing home or other chronic care facility' and reported to be part of an outbreak assigned as a long-term care home (via the Outbreak number or case comments field); or were reported to be part of an outbreak assigned as a long-term care home (via the outbreak number or case comments field) with an age over 70 years and did not report 'No' to the risk factors 'Resident of long-term care home' or 'Resident of nursing home or other chronic care facility'. 'Long-term care home residents' excludes cases that reported 'Yes' to any of the health care worker occupational risk factors.
- The 'health care workers' variable includes cases that reported 'Yes' to any of the occupation of health care worker, doctor, nurse, dentist, dental hygienist, midwife, other medical technicians, personal support worker, respiratory therapist, first responder.
- 'Health care workers associated with long-term care outbreaks' includes 'health care workers' reported to be part of an outbreak assigned as a long-term care home (via the outbreak number or case comments field). Excludes cases that reported 'Yes' to risk factors 'Resident of long-term care home' or 'Resident of nursing home or other chronic care facility' and 'Yes' to the calculated 'health care workers' variable.
- Percent change is calculated by taking the difference between the current period (i.e., daily count or sum of the daily count over a 7-day period) and previous period (i.e., daily count or sum of the daily count over a 7-day period), divided by the previous period.
- PANGO lineage B.1.1.7: This lineage was first detected in England in September, 2020. Early evidence suggests that the N501Y mutation may increase SARS-CoV-2 transmissibility. The PANGO lineage B.1.1.7 is assigned to genome sequences with at least 5 of the 17 defining B.1.1.7 SNPs.
- PANGO lineage B.1.351 (also known as 501Y.V2): This lineage was first detected October, 2020 in South Africa and has several mutations of concern, including spike (S) gene: N501Y, K417N, and E484K. Early evidence suggests that these mutations may increase SARS-CoV-2 transmissibility and decrease vaccine efficacy. The PANGO lineage B.1.351 will be assigned to genome sequences at least 5 of the 9 defining B.1.351 SNPs.
- Public Health Ontario conducts variants of concern (VOC) surveillance on a subset of SARS-CoV-2 positive specimens. Additional SARS-CoV-2 specimens are referred to PHO Laboratory for screening provided they meet the criteria outlined here:  
<https://www.publichealthontario.ca/en/laboratory-services/test-information-index/covid-19-voc>



## Appendix A

**Table A1. Weekly rates of confirmed COVID-19 cases per 100,000 population over recent rolling 7-day periods, by reported date and public health unit: Ontario, January 22 to February 03, 2021**

Public Health Unit Name	Jan 22 to Jan 28	Jan 23 to Jan 29	Jan 24 to Jan 30	Jan 25 to Jan 31	Jan 26 to Feb 01	Jan 27 to Feb 02	Jan 28 to Feb 03	% change from Jan 22-Jan 28 to Jan 28-Feb 03
<b>NORTH WEST</b>								
Northwestern Health Unit	21.7	18.2	13.7	13.7	11.4	13.7	13.7	-36.9%
Thunder Bay District Health Unit	72.0	70.0	73.4	81.4	85.4	83.4	68.7	-4.6%
<b>NORTH EAST</b>								
Algoma Public Health	11.4	13.1	14.0	14.9	17.5	20.1	17.5	+53.5%
North Bay Parry Sound District Health Unit	3.9	3.9	3.9	4.6	3.1	4.6	5.4	+38.5%
Porcupine Health Unit	82.7	85.1	64.7	62.3	61.1	55.1	41.9	-49.3%
Public Health Sudbury & Districts	38.2	38.7	34.2	29.1	23.1	21.1	16.1	-57.9%
Timiskaming Health Unit	9.2	3.1	3.1	3.1	3.1	6.1	6.1	-33.7%
<b>EASTERN</b>								
Ottawa Public Health	44.3	42.1	38.1	36.6	37.0	35.4	33.1	-25.3%
Eastern Ontario Health Unit	61.8	64.2	62.3	60.8	56.5	50.8	48.9	-20.9%
Hastings Prince Edward Public Health	1.2	1.2	0.6	1.2	1.8	2.4	1.8	+50.0%
Kingston, Frontenac and Lennox & Addington Public Health	6.1	4.2	3.3	3.3	4.7	4.7	3.3	-45.9%

Public Health Unit Name	Jan 22 to Jan 28	Jan 23 to Jan 29	Jan 24 to Jan 30	Jan 25 to Jan 31	Jan 26 to Feb 01	Jan 27 to Feb 02	Jan 28 to Feb 03	% change from Jan 22-Jan 28 to Jan 28-Feb 03
Leeds, Grenville & Lanark District Health Unit	12.7	15.0	15.0	17.3	18.5	16.2	13.3	+4.7%
Renfrew County and District Health Unit	1.8	3.7	3.7	4.6	4.6	5.5	6.4	+255.6%
<b>CENTRAL EAST</b>								
Durham Region Health Department	66.4	65.4	66.3	67.7	64.9	62.7	59.8	-9.9%
Haliburton, Kawartha, Pine Ridge District Health Unit	27.0	28.1	23.3	28.1	26.5	27.0	37.6	+39.3%
Peel Public Health	154.3	149.8	146.8	143.8	138.5	136.7	133.8	-13.3%
Peterborough Public Health	26.4	24.3	20.9	20.9	20.9	18.2	15.5	-41.3%
Simcoe Muskoka District Health Unit	52.4	53.5	51.5	51.2	50.9	51.4	52.9	+1.0%
York Region Public Health	105.2	100.8	98.5	95.0	92.0	85.0	79.9	-24.0%
<b>TORONTO</b>								
Toronto Public Health	145.1	140.0	137.0	133.7	132.7	128.7	122.9	-15.3%
<b>SOUTH WEST</b>								
Chatham-Kent Public Health	95.9	108.2	109.1	108.2	98.8	92.2	94.1	-1.9%
Grey Bruce Health Unit	15.3	13.5	15.3	14.1	17.1	16.5	13.5	-11.8%
Huron Perth Public Health	58.7	51.5	50.1	37.2	35.1	30.1	27.9	-52.5%
Lambton Public Health	61.8	53.4	48.9	44.3	41.2	40.5	32.8	-46.9%
Middlesex-London Health Unit	51.4	48.3	47.9	45.7	45.5	45.7	41.4	-19.5%

Public Health Unit Name	Jan 22 to Jan 28	Jan 23 to Jan 29	Jan 24 to Jan 30	Jan 25 to Jan 31	Jan 26 to Feb 01	Jan 27 to Feb 02	Jan 28 to Feb 03	% change from Jan 22-Jan 28 to Jan 28-Feb 03
Southwestern Public Health	58.6	49.6	39.7	40.2	38.8	39.7	33.1	-43.5%
Windsor-Essex County Health Unit	106.2	89.4	90.4	85.2	76.3	72.3	65.2	-38.6%
<b>CENTRAL WEST</b>								
Brant County Health Unit	41.2	36.7	36.7	34.8	29.0	23.8	32.2	-21.8%
City of Hamilton Public Health Services	91.9	84.3	82.1	78.4	75.5	73.5	68.6	-25.4%
Haldimand-Norfolk Health Unit	37.7	33.3	32.4	33.3	34.2	37.7	35.1	-6.9%
Halton Region Public Health	62.7	55.6	56.9	58.3	56.2	53.1	61.1	-2.6%
Niagara Region Public Health	135.9	128.3	130.8	119.6	113.7	101.8	87.0	-36.0%
Region of Waterloo Public Health and Emergency Services	84.4	79.6	83.5	77.0	68.8	61.9	64.9	-23.1%
Wellington-Dufferin-Guelph Public Health	108.0	99.4	91.1	92.3	81.8	74.7	66.4	-38.5%
<b>TOTAL ONTARIO</b>	<b>92.4</b>	<b>88.3</b>	<b>86.4</b>	<b>84.1</b>	<b>81.4</b>	<b>78.3</b>	<b>74.9</b>	<b>-18.9%</b>

**Note:** Rates are based on the sum of the daily case counts during the date ranges specified in each column.

**Data Source:** CCM

**Table A2. Summary of confirmed variant of concern (VOC) cases by public health unit: Ontario as of February 06, 2021**

Public Health Unit Name	Cumulative count for Lineage B.1.1.7	Cumulative count for Lineage B.1.351
Algoma Public Health	0	0
Brant County Health Unit	0	0
Chatham-Kent Public Health	0	0
City of Hamilton Public Health Services	0	0
Durham Region Health Department	8	0
Eastern Ontario Health Unit	0	0
Grey Bruce Health Unit	0	0
Haldimand-Norfolk Health Unit	1	0
Haliburton, Kawartha, Pine Ridge District Health Unit	0	0
Halton Region Public Health	1	0
Hastings Prince Edward Public Health	0	0
Huron Perth Public Health	0	0
Kingston, Frontenac and Lennox & Addington Public Health	1	0
Lambton Public Health	0	0
Leeds, Grenville & Lanark District Health Unit	0	0
Middlesex-London Health Unit	4	0
Niagara Region Public Health	0	0

Public Health Unit Name	Cumulative count for Lineage B.1.1.7	Cumulative count for Lineage B.1.351
North Bay Parry Sound District Health Unit	0	0
Northwestern Health Unit	0	0
Ottawa Public Health	4	0
Peel Public Health	6	1
Peterborough Public Health	0	0
Porcupine Health Unit	0	0
Public Health Sudbury & Districts	1	0
Region of Waterloo Public Health and Emergency Services	1	0
Renfrew County and District Health Unit	0	0
Simcoe Muskoka District Health Unit	101	0
Southwestern Public Health	0	0
Thunder Bay District Health Unit	0	0
Timiskaming Health Unit	0	0
Toronto Public Health	27	0
Wellington-Dufferin-Guelph Public Health	0	0
Windsor-Essex County Health Unit	0	0
York Region Public Health	19	0
<b>TOTAL ONTARIO</b>	<b>174</b>	<b>1</b>

**Note:** Caution should be taken when interpreting VOC data due to the nature of the screening and confirmation process, including delays between specimen collection and whole genome sequencing (WGS). A confirmed VOC case is defined as a COVID-19 case in whom a designated VOC was detected by WGS of their SARS-CoV-2 positive

specimen. Data corrections or updates can result in case records being removed and/or updated and may result in totals differing from past publicly reported case counts.

**Data Source:** CCM

## Disclaimer

This document was developed by Public Health Ontario (PHO). PHO provides scientific and technical advice to Ontario's government, public health organizations and health care providers. PHO's work is guided by the current best available evidence at the time of publication.

The application and use of this document is the responsibility of the user. PHO assumes no liability resulting from any such application or use.

This document may be reproduced without permission for non-commercial purposes only and provided that appropriate credit is given to PHO. No changes and/or modifications may be made to this document without express written permission from PHO.

## Citation

Ontario Agency for Health Protection and Promotion (Public Health Ontario). Epidemiologic summary: COVID-19 in Ontario – January 15, 2020 to February 06, 2021. Toronto, ON: Queen's Printer for Ontario; 2021.

## For Further Information

For more information, email [cd@oahpp.ca](mailto:cd@oahpp.ca).

## Public Health Ontario

Public Health Ontario is an agency of the Government of Ontario dedicated to protecting and promoting the health of all Ontarians and reducing inequities in health. Public Health Ontario links public health practitioners, front-line health workers and researchers to the best scientific intelligence and knowledge from around the world.

For more information about PHO, visit [publichealthontario.ca](http://publichealthontario.ca).

