

Daily Epidemiologic Summary

COVID-19 in Ontario: January 15, 2020 to March 23, 2021

This report includes the most current information available from CCM as of **March 23, 2021**.

Please visit the interactive [Ontario COVID-19 Data Tool](#) to explore recent COVID-19 data by public health unit, age group, sex, and trends over time.

A [weekly summary report](#) is available with additional information to complement the daily report.

This **daily** report provides an epidemiologic summary of recent COVID-19 activity in Ontario. The change in cases is determined by taking the cumulative difference between the current day and the previous day.

Highlights

- There are a total of 333,690 confirmed cases of COVID-19 in Ontario reported to date.
- Compared to the previous day, this represents:
 - An increase of 1,571 confirmed cases (percent change of +1.6%)
 - An increase of 10 deaths (percent change of +11.1%)
 - An increase of 1,531 resolved cases (percent change of +20.5%)

In this document, the term 'change in cases' refers to cases publicly reported by the province for a given day. Data corrections or updates can result in case records being removed and or updated from past reports and may result in subset totals for updated case counts (i.e., age group, gender) differing from the overall updated case counts.

The term public health unit reported date in this document refers to the date local public health units were first notified of the case.

Case Characteristics

Table 1a. Summary of recent confirmed cases of COVID-19: Ontario

	Change in cases March 22, 2021	Change in cases March 23, 2021	Percentage change March 23, 2021 compared to March 22, 2021	Cumulative case count as of March 23, 2021
Total number of cases	1,546	1,571	+1.6%	333,690
Number of deaths	9	10	+11.1%	7,263
Number resolved	1,271	1,531	+20.5%	311,380

Note: The number of cases publicly reported by the province each day may not align with case counts reported to public health on a given day; public health unit reported date refers to the date local public health was first notified of the case. Data corrections or updates can result in case records being removed and or updated from past reports.

Data Source: CCM

Table 1b. Summary of recent confirmed cases of COVID-19 by age group and gender: Ontario

	Change in cases March 22, 2021	Change in cases March 23, 2021	Cumulative case count as of March 23, 2021
Gender: Male	804	808	164,787
Gender: Female	730	750	167,040
Ages: 19 and under	335	327	46,775
Ages: 20-39	537	579	122,315
Ages: 40-59	464	422	96,005
Ages: 60-79	185	202	47,474
Ages: 80 and over	25	45	21,046

Note: Not all cases have a reported age or gender reported. Data corrections or updates can result in case records being removed and or updated from past reports and may result in subset totals (i.e., age group, gender) differing from past publicly reported case counts.

Data Source: CCM

Table 2. Summary of recent confirmed cases of COVID-19 in school aged children by age group, August 30, 2020 to March 23, 2021: Ontario

	Change in cases March 22, 2021	Change in cases March 23, 2021	Cumulative case count from August 30, 2020 to March 23, 2021
Ages: 4 to 8	73	73	8,180
Ages: 9 to 13	95	78	10,794
Ages: 14 to 17	59	58	10,937

Note: Includes all confirmed cases of COVID-19 for specified ages, regardless of school attendance. Data corrections or updates can result in case records being removed and or updated from past reports and may result in subset totals (i.e., age group) differing from past publicly reported case counts.

Data Source: CCM

Table 3. Summary of recent confirmed cases of COVID-19 in long-term care homes: Ontario

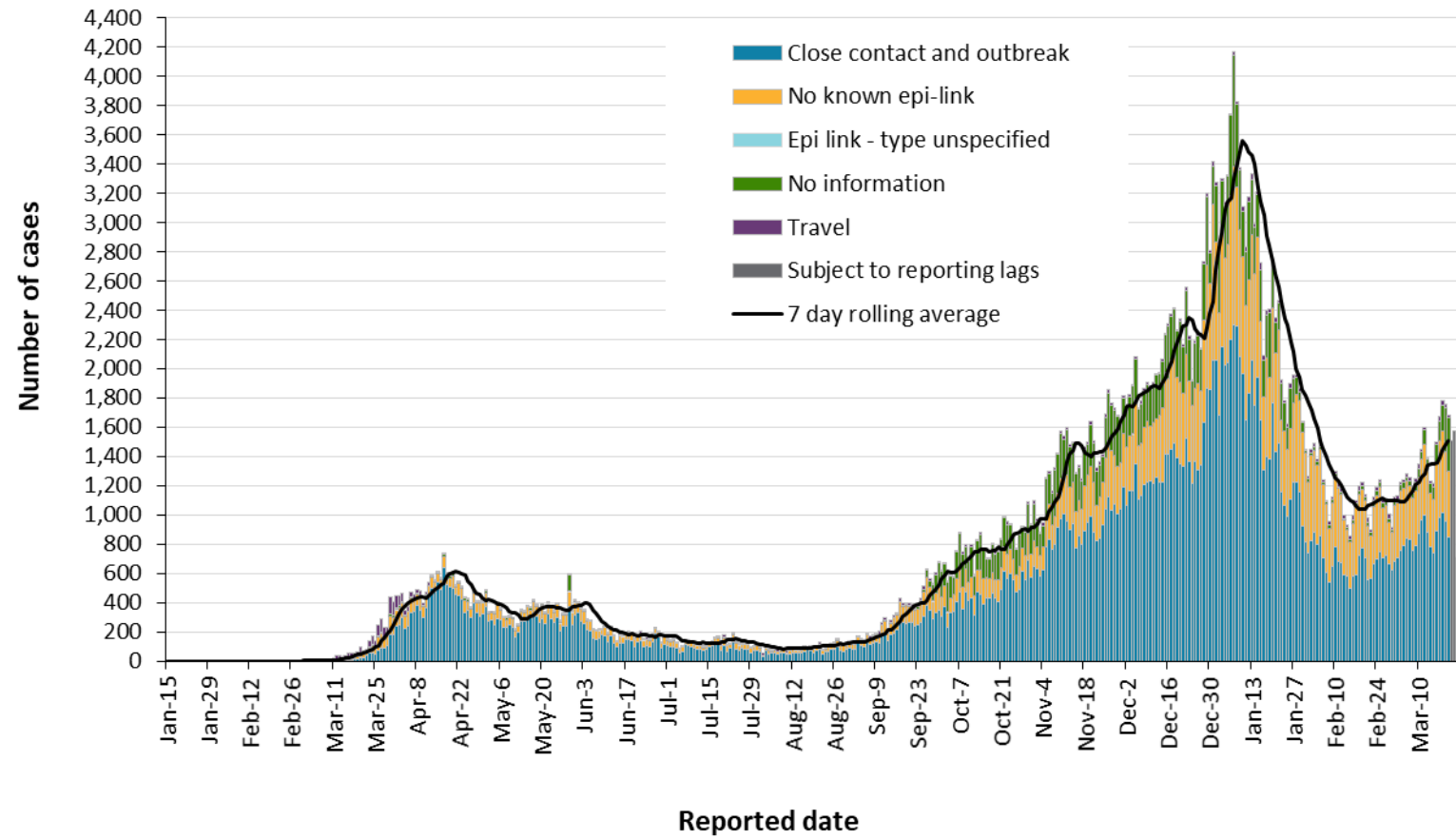
Long-term care home cases	Change in cases March 22, 2021	Change in cases March 23, 2021	Cumulative case count as of March 23, 2021
Residents	1	5	15,015
Health care workers	2	5	6,789
Deaths among residents	1	0	3,892
Deaths among health care workers	0	0	10

Note: Information on how long-term care home residents and health care workers are identified is available in the technical notes. Also, the change in cases in these categories may represent existing case records that have been updated.

Data Source: CCM

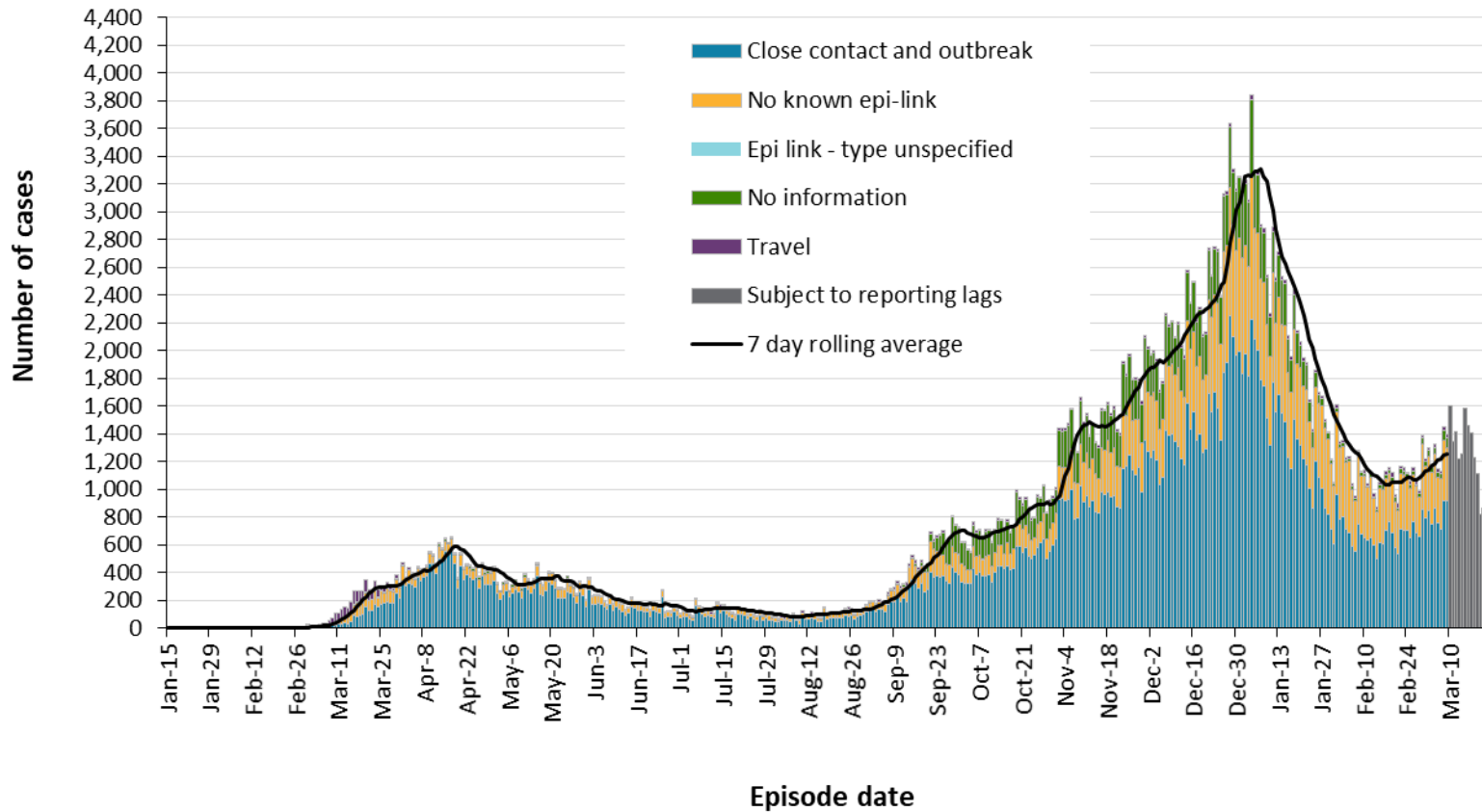
Time

Figure 1. Confirmed cases of COVID-19 by likely acquisition and public health unit reported date: Ontario, January 15, 2020 to March 23, 2021



Data Source: CCM

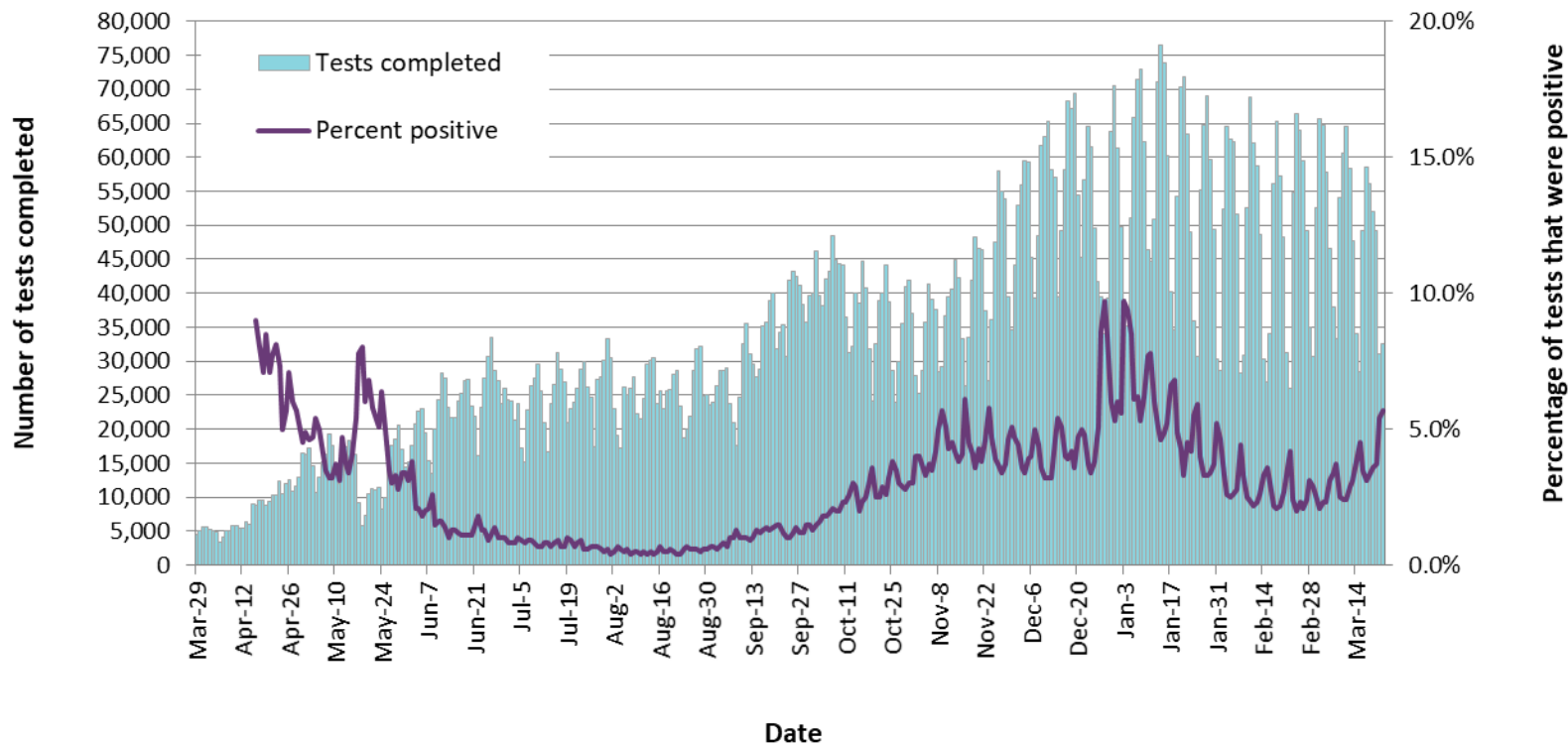
Figure 2. Confirmed cases of COVID-19 by likely acquisition and approximation of symptom onset date: Ontario, January 15, 2020 to March 23, 2021



Note: Not all cases may have an episode date and those without one are not included in the figure. Episode date is defined and available in the technical notes.

Data Source: CCM

Figure 3. Number of COVID-19 tests completed and percent positivity: Ontario, March 29, 2020 to March 22, 2021

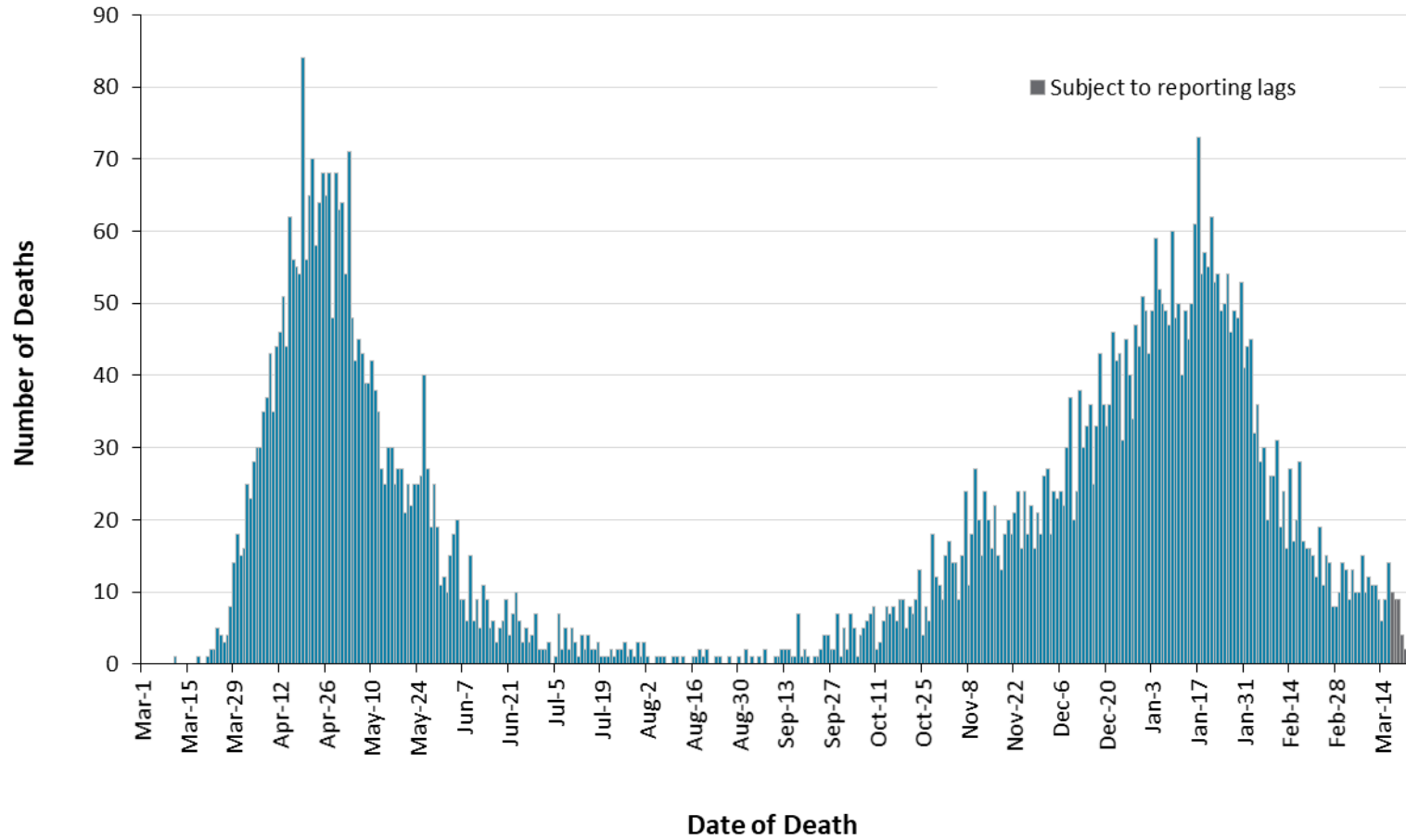


Note: The number of tests performed does not reflect the number of specimens or persons tested. More than one test may be performed per specimen or per person. As such, the percentage of tests that were positive does not necessarily translate to the number of specimens or persons testing positive.

Data Source: The Provincial COVID-19 Diagnostics Network, data reported by member microbiology laboratories.

Severity

Figure 4. Confirmed deaths among COVID-19 cases by date of death: Ontario, March 1, 2020 to March 23, 2021



Note: Cases without a death date are not included in the figure.

Data Source: CCM

Table 4. Confirmed cases of COVID-19 by severity: Ontario

	Cumulative case count as of March 23, 2021	Percentage of all cases
Cumulative deaths reported (please note there may be a reporting delay for deaths)	7,263	2.2%
Deaths reported in ages: 19 and under	2	<0.1%
Deaths reported in ages: 20-39	33	<0.1%
Deaths reported in ages: 40-59	305	0.3%
Deaths reported in ages: 60-79	2,030	4.3%
Deaths reported in ages: 80 and over	4,892	23.2%
Ever in ICU	2,924	0.9%
Ever hospitalized	16,467	4.9%

Note: Not all cases have an age reported. Data corrections or updates can result in case records being removed and/or updated and may result in totals differing from past publicly reported case counts.

Data Source: CCM

Geography

Table 5. Summary of recent confirmed cases of COVID-19 by public health unit and region: Ontario

Public Health Unit Name	Change in cases March 22, 2021	Change in cases March 23, 2021	Cumulative case count	Cumulative rate per 100,000 population
Northwestern Health Unit	1	2	643	733.4
Thunder Bay District Health Unit	10	47	2,681	1,787.8
TOTAL NORTH WEST	11	49	3,324	1,398.8
Algoma Public Health	2	1	224	195.7
North Bay Parry Sound District Health Unit	1	-1	285	219.6
Porcupine Health Unit	0	0	346	414.7
Public Health Sudbury & Districts	15	27	1,235	620.5
Timiskaming Health Unit	1	5	119	364.0
TOTAL NORTH EAST	19	32	2,209	394.9
Ottawa Public Health	58	89	16,311	1,546.6
Eastern Ontario Health Unit	15	20	3,028	1,450.8
Hastings Prince Edward Public Health	3	1	444	263.5
Kingston, Frontenac and Lennox & Addington Public Health	9	6	851	400.1
Leeds, Grenville & Lanark District Health Unit	13	20	1,154	666.4
Renfrew County and District Health Unit	-1	2	404	371.9
TOTAL EASTERN	97	138	22,192	1,152.0

Public Health Unit Name	Change in cases March 22, 2021	Change in cases March 23, 2021	Cumulative case count	Cumulative rate per 100,000 population
Durham Region Health Department	99	86	13,140	1,844.5
Haliburton, Kawartha, Pine Ridge District Health Unit	2	1	1,113	589.1
Peel Public Health	329	309	66,883	4,164.7
Peterborough Public Health	1	9	823	556.2
Simcoe Muskoka District Health Unit	38	25	7,400	1,234.2
York Region Public Health	161	143	31,724	2,588.0
TOTAL CENTRAL EAST	630	573	121,083	2,702.4
Toronto Public Health	465	459	103,692	3,323.1
TOTAL TORONTO	465	459	103,692	3,323.1
Chatham-Kent Public Health	12	12	1,547	1,455.1
Grey Bruce Health Unit	8	1	740	435.6
Huron Perth Public Health	0	0	1,417	1,013.9
Lambton Public Health	20	9	2,649	2,022.7
Middlesex-London Health Unit	22	39	6,670	1,314.2
Southwestern Public Health	12	7	2,722	1,287.0
Windsor-Essex County Health Unit	21	16	13,607	3,202.9
TOTAL SOUTH WEST	95	84	29,352	1,736.0
Brant County Health Unit	2	7	2,092	1,347.9
City of Hamilton Public Health Services	57	84	12,074	2,039.0

Public Health Unit Name	Change in cases March 22, 2021	Change in cases March 23, 2021	Cumulative case count	Cumulative rate per 100,000 population
Haldimand-Norfolk Health Unit	13	12	1,532	1,342.9
Halton Region Public Health	64	28	10,130	1,636.3
Niagara Region Public Health	39	41	9,287	1,965.6
Region of Waterloo Public Health and Emergency Services	31	47	11,593	1,983.9
Wellington-Dufferin-Guelph Public Health	23	17	5,130	1,644.7
TOTAL CENTRAL WEST	229	236	51,838	1,819.3
TOTAL ONTARIO	1,546	1,571	333,690	2,244.9

Notes: Health units with data corrections or updates could result in records being removed from totals resulting in negative counts.

Data Source: CCM

Outbreaks

Table 6. Summary of recent confirmed COVID-19 outbreaks reported in long-term care homes, retirement homes and hospitals by status: Ontario

Institution type	Change in outbreaks March 22, 2021	Change in outbreaks March 23, 2021	Number of ongoing outbreaks	Cumulative number of outbreaks reported
Long-term care homes	0	1	60	1352
Retirement homes	2	5	40	808
Hospitals	1	1	33	449

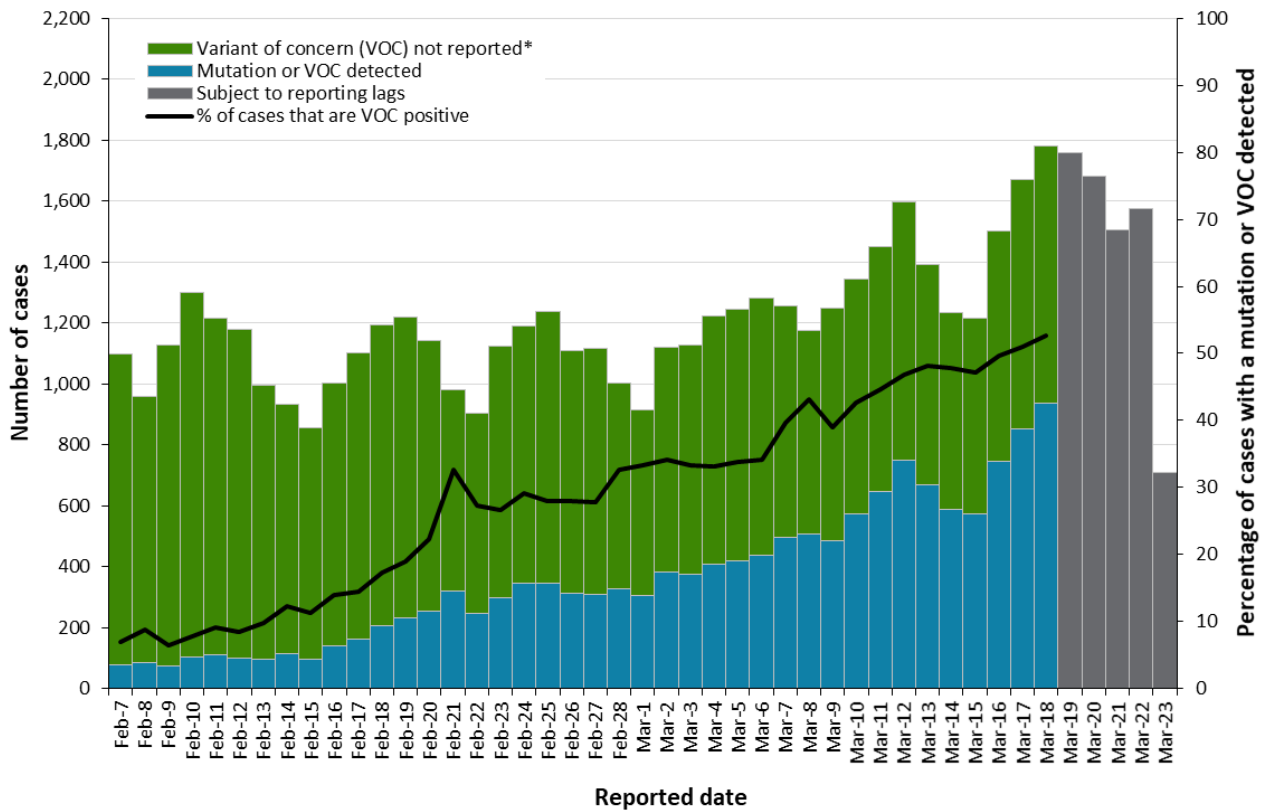
Note: Ongoing outbreaks include all outbreaks that are 'Open' in CCM without a 'Declared Over Date' recorded, or where the outbreak started more than five months ago, even for outbreaks where the Outbreak Status value selected in CCM is 'OPEN'. The start of the outbreak is determined by the onset date of first case, or if missing the outbreak reported date, or else if that is also missing, then the outbreak created date.

Data Source: CCM

Variant COVID-19 Cases

The laboratory detection of a variant of concern (VOC) is a multi-step process. Samples that test positive for SARS-CoV-2 and have a cycle threshold (Ct) value ≤ 35 can be tested for mutations common to variants of concern. If positive for the mutation of interest these samples may then undergo genomic analyses to identify the VOC. VOC lineages may still be confirmed using genomic analysis despite specific S gene mutation(s) being documented as 'unable to complete' due to poor sequence quality at the genome position.

Figure 5. Number of confirmed COVID-19 cases and percent positive for mutations or VOCs: Ontario, February 7, 2021 to March 23, 2021



Note: Data used to calculate the number of cases tested for mutations common to VOCs or lineages using genomic analyses are obtained using information from the Laboratory object in CCM in addition to the data from the Investigation Subtype field. Therefore, comparisons to counts using only information from the Investigation Subtype field may not align. The percent of cases due to a VOC may be higher than described in this report. While all confirmed COVID-19 cases are included in the denominator, not all cases were able to be tested for VOCs.

*VOC not reported category includes cases where mutations common to VOCs or lineages were not detected or where testing results were not available/not completed.

Data Source: CCM

Table 7. Summary of confirmed COVID-19 cases with a mutation or VOC detected: Ontario

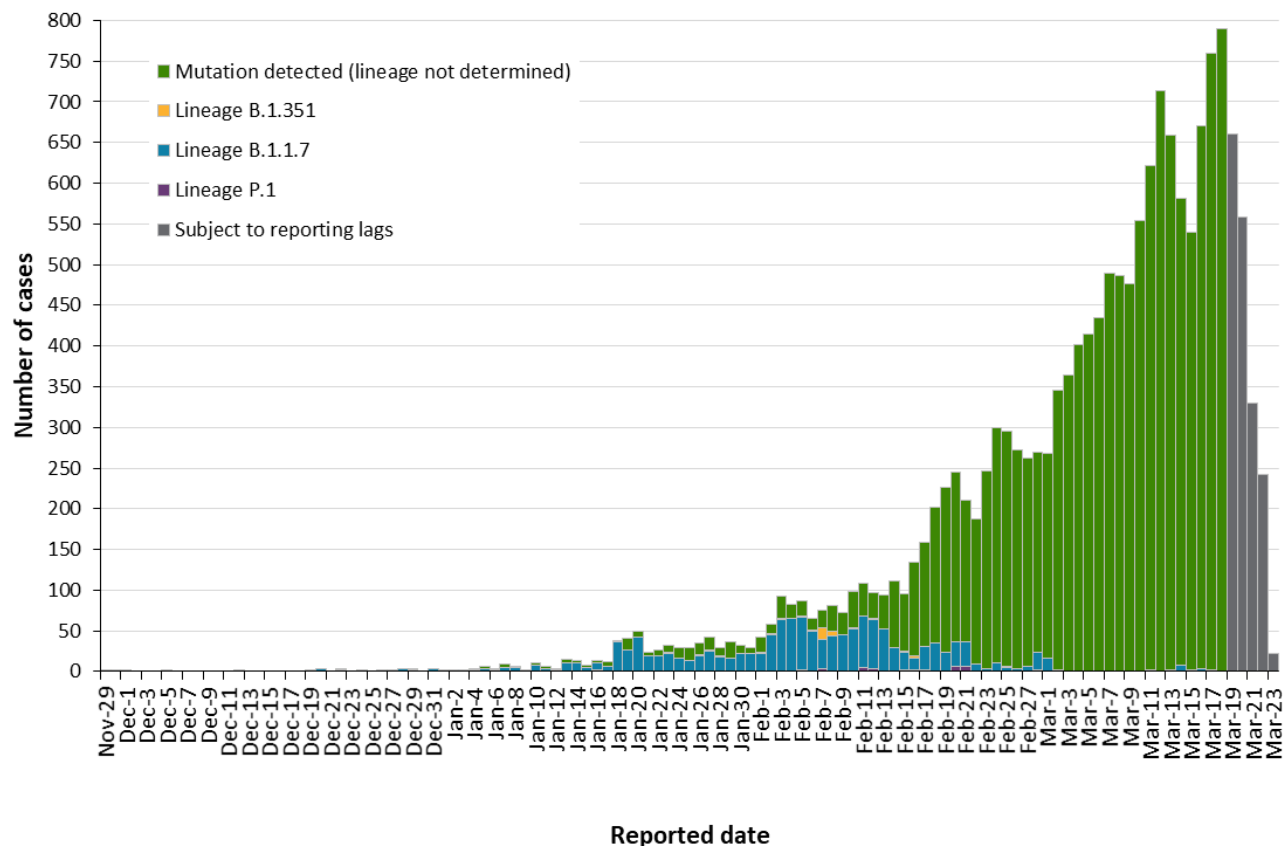
Variant	Change in cases March 22, 2021	Change in cases March 23, 2021	Cumulative case count up to March 23, 2021
Lineage B.1.1.7	19	30	1,389
Lineage B.1.351	-1	3	50
Lineage P.1	1	10	47
Mutation detected (lineage not determined)*	666	909	14,803

Note: Interpret the VOC and mutation trends with caution due to the varying time required to complete VOC testing and/or genomic analysis following the initial positive test for SARS-CoV-2. Due to the nature of the genomic analysis, test results may be completed in batches. Data corrections or updates can result in case records being removed and/or updated and may result in totals differing from past publicly reported case counts. Data for calculating the change in cases and the cumulative case count uses data from the Investigation Subtype field only.

*Includes all confirmed COVID-19 cases with a lineage or mutation reported in the Investigation Subtype field, excluding variants of concern B.1.1.7, B.1.351, and P.1 lineages. If a VOC is identified through genomic analysis, the change in cases and/or cumulative case counts for mutations will fluctuate as the case is moved to one of listed lineages.

Data Source: CCM

Figure 6. Confirmed COVID-19 cases with a mutation or VOC detected by public health unit reported date: Ontario, November 29, 2020 to March 23, 2021



Note: Reported date is based on the date the case was reported, not the date that the VOC or mutation was identified. Further details on testing for variants of concern can be found in the [technical notes](#). Interpret the VOC and mutation trends with caution due to the varying time required to complete testing and/or genomic analysis following the initial positive test for SARS-CoV-2. Data for calculating the change in cases and the cumulative case count uses data from the Investigation Subtype field only. Data for cases with a B.1.1.7, B.1.351, and P.1 lineage detected are determined using the Investigation Subtype field only. Mutation detected (lineage not determined) includes all confirmed COVID-19 cases with a lineage or mutation detected reported from the Investigation Subtype field excluding B.1.1.7, B.1.351, and P.1 lineages.

Data Source: CCM

Technical Notes

Data Sources

- The data for this report were based on information successfully extracted from the Public Health Case and Contact Management Solution (CCM) for all PHUs by PHO as of **March 23, 2021 at 1 p.m.**
- CCM is a dynamic disease reporting system, which allows ongoing updates to data previously entered. As a result, data extracted from CCM represent a snapshot at the time of extraction and may differ from previous or subsequent reports.
- Ontario population projection data for 2020 were sourced from Ministry, IntelliHEALTH Ontario. Data were extracted on November 26, 2019.
- COVID-19 test data were based on information from The Provincial COVID-19 Diagnostics Network, reported by member microbiology laboratories.

Data Caveats

- The data only represent cases reported to public health units and recorded in CCM. As a result, all counts will be subject to varying degrees of underreporting due to a variety of factors, such as disease awareness and medical care seeking behaviours, which may depend on severity of illness, clinical practice, changes in laboratory testing, and reporting behaviours.
- Lags in CCM data entry due to weekend staffing may result in lower case counts than would otherwise be recorded.
- Only cases meeting the confirmed case classification as listed in the [MOH Case Definition – Coronavirus Disease \(COVID-19\) document](#) are included in the report counts from CCM. This includes persons with:
 - laboratory confirmation by a validated NAAT assay
 - a validated point-of-care (POC) assay deemed acceptable to provide a final result
 - a validated laboratory-based serological assay SARS-CoV-2
- Cases of confirmed reinfection, as defined in the provincial case definitions, are counted as unique investigations.
- Case classification information may be updated for individuals with a positive result issued from a point-of-care assays.
- The number of tests performed does not reflect the number of specimens or persons tested. More than one test may be performed per specimen or per person. As such, the percentage of tests that were positive does not necessarily translate to the number of specimens or persons testing positive.

- Reported date is the date the case was reported to the public health unit.
- Case episode date is based on an estimate of the best date of disease onset. This date is calculated based on either the date of symptom onset, specimen collection/test date, or the date reported to the public health unit.
- Resolved cases are determined only for COVID-19 cases that have not died. Cases that have died are considered fatal and not resolved. The following cases are classified as resolved:
 - Cases that are reported as 'recovered' in CCM
 - Cases that are not hospitalized and are 14 days past their episode date
 - Cases that are currently hospitalized (no hospital end date entered) and have a status of 'closed' in CCM (indicating public health unit follow-up is complete) and are 14 days past their symptom onset date or specimen collection date
- Hospitalization includes all cases for which a hospital admission date was reported at the time of data extraction. It includes cases that have been discharged from hospital as well as cases that are currently hospitalized. Emergency room visits are not included in the number of reported hospitalizations.
- ICU admission includes all cases for which an ICU admission date was reported at the time of data extraction. It is a subset of the count of hospitalized cases. It includes cases that have been treated or that are currently being treated in an ICU.
- Orientation of case counts by geography is based on the diagnosing health unit (DHU). DHU refers to the case's public health unit of residence at the time of illness onset and not necessarily the location of exposure. Cases for which the DHU was reported as MOH-PHO (to signify a case that is not a resident of Ontario) have been excluded from the analyses.
- Likely source of acquisition is determined by examining the epidemiologic link and epidemiologic link status fields in CCM. If no epidemiologic link is identified in those fields the risk factor fields are examined to determine whether a case travelled, was associated with a confirmed outbreak, was a contact of a case, had no known epidemiological link (sporadic community transmission) or was reported to have an unknown source/no information was reported. Some cases may have no information reported if the case is untraceable, was lost to follow-up or referred to FNIHB. Cases with multiple risk factors were assigned to a single likely acquisition source group which was determined hierarchically in the following order:
 - For cases with an episode date *on or after* April 1, 2020: Outbreak-associated > close contact of a confirmed case > travel > no known epidemiological link > information missing or unknown
 - For cases with an episode date *before* April 1, 2020: Travel > outbreak-associated > close contact of a confirmed case > no known epidemiological link > information missing or unknown
- Deaths are determined by using the outcome field in CCM. Any case marked 'Fatal' is included in the deaths data. The CCM field Type of Death is not used to further categorize the data.

- The date of death is determined using the outcome date field for cases marked as 'Fatal' in the outcome field.
- COVID-19 cases from CCM for which the Classification and/or Disposition was reported as ENTERED IN ERROR, DOES NOT MEET DEFINITION, IGNORE, DUPLICATE or any variation on these values have been excluded. The provincial case count for COVID-19 may include some duplicate records, if these records were not identified and resolved.
- Ongoing outbreaks include all outbreaks that are 'Open' in CCM without a 'Declared Over Date' recorded, or where the outbreak started more than five months ago, even for outbreaks where the Outbreak Status value selected in CCM is 'OPEN'. The start of the outbreak is determined by the onset date of first case, or if missing the outbreak reported date, or else if that is also missing, then the outbreak created date.
- 'Long-term care home residents' includes cases that reported 'Yes' to the risk factor 'Resident of a long-term care home'; or 'Yes' to the risk factor 'Resident of nursing home or other chronic care facility' and reported to be part of an outbreak assigned as a long-term care home (via the Outbreak number or case comments field); or were reported to be part of an outbreak assigned as a long-term care home (via the outbreak number or case comments field) with an age over 70 years and did not report 'No' to the risk factors 'Resident of long-term care home' or 'Resident of nursing home or other chronic care facility'. 'Long-term care home residents' excludes cases that reported 'Yes' to any of the health care worker occupational risk factors.
- The 'health care workers' variable includes cases that reported 'Yes' to any of the occupation of health care worker, doctor, nurse, dentist, dental hygienist, midwife, other medical technicians, personal support worker, respiratory therapist, first responder.
- 'Health care workers associated with long-term care outbreaks' includes 'health care workers' reported to be part of an outbreak assigned as a long-term care home (via the outbreak number or case comments field). Excludes cases that reported 'Yes' to risk factors 'Resident of long-term care home' or 'Resident of nursing home or other chronic care facility' and 'Yes' to the calculated 'health care workers' variable.
- Percent change is calculated by taking the difference between the current period (i.e., daily count or sum of the daily count over a 7-day period) and previous period (i.e., daily count or sum of the daily count over a 7-day period), divided by the previous period.
- PANGO lineage B.1.1.7: This lineage was first detected in England in September, 2020. Early evidence suggests that the N501Y mutation may increase SARS-CoV-2 transmissibility. The PANGO lineage B.1.1.7 is assigned to genome sequences with at least 5 of the 17 defining B.1.1.7 SNPs.
- PANGO lineage B.1.351 (also known as 501Y.V2): This lineage was first detected October, 2020 in South Africa and has several mutations of concern, including spike (S) gene: N501Y, K417N, and E484K. Early evidence suggests that these mutations may increase SARS-CoV-2 transmissibility and decrease vaccine efficacy. The PANGO lineage B.1.351 will be assigned to genome sequences at least 5 of the 9 defining B.1.351 SNPs.
- PANGO lineage P.1 (also known as 501Y.V3): This lineage was first detected January, 2021 in Brazil and has several mutations of concern, including spike (S) gene N501Y, K417T, and E484K.

Early evidence suggests that these mutations may increase SARS-CoV-2 transmissibility and decrease vaccine efficacy. The PANGO lineage P.1 is assigned to genome sequences with more than 10 of the 17 defining P.1 SNPs.

- Public Health Ontario conducts testing and genomic analyses for SARS-CoV-2 positive specimens using the criteria outlined here: <https://www.publichealthontario.ca/en/laboratory-services/test-information-index/covid-19-voc>
- The laboratory detection of a variant of concern is a multi-step process. Samples that test positive for SARS-CoV-2 and have a cycle threshold (Ct) value ≤ 35 can be tested for mutations common to variants of concern. If positive for the mutation of interest these samples may then undergo genomic analyses to identify the VOC. VOC lineages may still be confirmed using genomic analysis despite specific S gene mutation(s) being documented as 'unable to complete' due to poor sequence quality at the genome position.
- VOC testing data are analyzed for cases with a reported date on or after February 07, 2021. VOC testing data are based on CCM information reported within the laboratory object for select Logical Observation Identifiers Names and Codes (LOINC) and supplemented with information from the Investigation Subtype field. A confirmed Case Investigation is assigned a VOC test value (e.g., VOC test detected, VOC test not detected) based on the following hierarchy:
 - If multiple laboratory results are identified, a VOC test value is assigned based on the following hierarchy: Detected > Not Detected > Unable to complete
 - If a laboratory result is 'Not Detected' or 'Unable to complete', but data on the Investigation Subtype field is listed as a lineage or mutation common to a VOC, then the VOC test value is set to 'Detected'
- If a VOC is identified through genomic analysis cases initially classified as a mutation may be updated and moved to the appropriate lineage (B.1.1.7, B.1.351 and P.1)
- LOINCs are a set of internationally used result description codes. In the absence of a standard LOINC, Ontario Health can create local result codes, which are identified with an 'XON' prefix. LOINCs incorporate details of the result value (e.g. test method, target detected - such as IgG, DNA, isolate etc.) and are unique to each result.
- VOC testing data in this report are assigned on a per case basis. Multiple laboratory results may be associated to a single case investigation, but for analysis purposes are only counted once.
 - The percent of cases that test VOC positive is calculated by taking the number of VOC test positive, divided by the total number of confirmed COVID-19 cases for a given reported date.
- The VOC percent positive may be higher than described in this report. While all confirmed COVID-19 cases are included in the denominator, not all cases were able to be tested for VOCs. As testing algorithms change, the VOC percent positivity may not be reflective of the exact number of COVID-19 cases due to VOCs
- Only CCM case investigations with a CONFIRMED classification have their laboratory records with VOC testing information included in the percent positivity calculations

Appendix A

Table A1. Weekly rates of confirmed COVID-19 cases per 100,000 population over recent rolling 7-day periods, by reported date and public health unit: Ontario, March 8 to March 20, 2021

Public Health Unit Name	Mar 8 to Mar 14	Mar 9 to Mar 15	Mar 10 to Mar 16	Mar 11 to Mar 17	Mar 12 to Mar 18	Mar 13 to Mar 19	Mar 14 to Mar 20	% change from Mar 8-Mar 14 to Mar 14-Mar 20
NORTH WEST								
Northwestern Health Unit	76.4	77.6	76.4	71.9	71.9	61.6	63.9	-16.4%
Thunder Bay District Health Unit	252.1	243.4	234.1	234.1	201.4	186.0	176.0	-30.2%
NORTH EAST								
Algoma Public Health	7.0	11.4	14.9	16.6	14.9	14.9	14.9	+112.9%
North Bay Parry Sound District Health Unit	2.3	3.1	3.1	3.1	5.4	12.3	11.6	+404.3%
Porcupine Health Unit	2.4	2.4	1.2	1.2	2.4	2.4	2.4	N/A
Public Health Sudbury & Districts	100.0	101.0	108.5	103.0	97.5	99.5	94.0	-6.0%
Timiskaming Health Unit	3.1	3.1	6.1	6.1	15.3	21.4	18.4	+493.5%
EASTERN								
Ottawa Public Health	45.3	47.4	48.6	48.7	48.5	49.8	52.8	+16.6%
Eastern Ontario Health Unit	43.1	42.6	43.1	45.5	51.7	58.9	62.3	+44.5%
Hastings Prince Edward Public Health	7.7	7.1	4.2	4.2	3.0	3.6	2.4	-68.8%
Kingston, Frontenac and Lennox & Addington Public Health	13.6	16.0	19.7	24.0	26.8	33.8	38.5	+183.1%

Public Health Unit Name	Mar 8 to Mar 14	Mar 9 to Mar 15	Mar 10 to Mar 16	Mar 11 to Mar 17	Mar 12 to Mar 18	Mar 13 to Mar 19	Mar 14 to Mar 20	% change from Mar 8-Mar 14 to Mar 14-Mar 20
Leeds, Grenville & Lanark District Health Unit	42.2	45.0	54.9	57.7	60.6	79.1	79.7	+88.9%
Renfrew County and District Health Unit	14.7	13.8	12.9	8.3	7.4	9.2	9.2	-37.4%
CENTRAL EAST								
Durham Region Health Department	40.8	40.3	43.0	48.4	57.4	63.2	68.5	+67.9%
Haliburton, Kawartha, Pine Ridge District Health Unit	14.3	13.8	13.2	15.3	14.8	14.3	13.8	-3.5%
Peel Public Health	107.1	105.8	111.7	116.8	120.1	121.5	126.8	+18.4%
Peterborough Public Health	33.8	31.1	28.4	31.1	29.1	32.4	34.5	+2.1%
Simcoe Muskoka District Health Unit	45.0	43.7	44.0	44.7	43.7	45.9	43.9	-2.4%
York Region Public Health	74.4	74.8	75.2	82.9	85.3	81.8	84.7	+13.8%
TORONTO								
Toronto Public Health	87.9	87.2	88.0	90.2	96.4	97.3	98.9	+12.5%
SOUTH WEST								
Chatham-Kent Public Health	55.5	62.1	63.0	71.5	72.4	69.6	84.7	+52.6%
Grey Bruce Health Unit	4.7	5.3	5.9	5.9	8.8	11.8	16.5	+251.1%
Huron Perth Public Health	16.5	16.5	18.6	13.6	12.2	12.9	8.6	-47.9%
Lambton Public Health	125.2	132.9	148.1	147.4	154.2	158.8	159.6	+27.5%
Middlesex-London Health Unit	25.6	28.4	27.8	27.4	29.6	30.3	31.7	+23.8%

Public Health Unit Name	Mar 8 to Mar 14	Mar 9 to Mar 15	Mar 10 to Mar 16	Mar 11 to Mar 17	Mar 12 to Mar 18	Mar 13 to Mar 19	Mar 14 to Mar 20	% change from Mar 8-Mar 14 to Mar 14-Mar 20
Southwestern Public Health	26.0	29.8	28.4	29.3	28.8	30.3	35.0	+34.6%
Windsor-Essex County Health Unit	49.2	49.0	46.6	45.0	43.5	41.9	45.7	-7.1%
CENTRAL WEST								
Brant County Health Unit	71.5	73.5	72.2	70.9	60.6	63.8	56.1	-21.5%
City of Hamilton Public Health Services	77.7	79.4	85.8	90.0	96.9	99.1	103.3	+32.9%
Haldimand-Norfolk Health Unit	35.9	40.3	39.4	35.1	41.2	35.1	30.7	-14.5%
Halton Region Public Health	47.0	42.6	42.3	44.1	44.9	46.8	46.7	-0.6%
Niagara Region Public Health	40.6	47.2	50.2	49.1	49.9	53.1	54.0	+33.0%
Region of Waterloo Public Health and Emergency Services	43.1	43.5	44.7	45.3	41.8	38.7	39.0	-9.5%
Wellington-Dufferin-Guelph Public Health	24.7	26.3	30.5	32.7	33.0	34.0	35.3	+42.9%
TOTAL ONTARIO	63.5	63.8	65.5	67.7	69.9	71.0	72.9	+14.8%

Note: Rates are based on the sum of the daily case counts during the date ranges specified in each column.

Data Source: CCM

Table A2. Summary of confirmed COVID-19 cases with a mutation or VOC by public health unit: Ontario as of March 23, 2021

Public Health Unit Name	Cumulative count for Lineage B.1.1.7	Cumulative count for Lineage B.1.351	Cumulative count for Lineage P.1	Cumulative count for mutation detected (lineage not determined)
Algoma Public Health	0	0	0	0
Brant County Health Unit	0	0	0	46
Chatham-Kent Public Health	1	0	0	14
City of Hamilton Public Health Services	10	0	0	474
Durham Region Health Department	67	0	2	844
Eastern Ontario Health Unit	0	1	0	108
Grey Bruce Health Unit	0	0	0	11
Haldimand-Norfolk Health Unit	4	3	0	24
Haliburton, Kawartha, Pine Ridge District Health Unit	2	0	0	43
Halton Region Public Health	27	0	0	382
Hastings Prince Edward Public Health	0	0	0	13
Huron Perth Public Health	0	0	0	4
Kingston, Frontenac and Lennox & Addington Public Health	1	0	0	52
Lambton Public Health	0	0	0	71
Leeds, Grenville & Lanark District Health Unit	0	0	0	23

Public Health Unit Name	Cumulative count for Lineage B.1.1.7	Cumulative count for Lineage B.1.351	Cumulative count for Lineage P.1	Cumulative count for mutation detected (lineage not determined)
Middlesex-London Health Unit	4	0	0	54
Niagara Region Public Health	8	0	0	240
North Bay Parry Sound District Health Unit	2	21	0	16
Northwestern Health Unit	1	0	0	5
Ottawa Public Health	21	2	0	343
Peel Public Health	302	10	7	2,529
Peterborough Public Health	1	0	0	165
Porcupine Health Unit	0	2	0	1
Public Health Sudbury & Districts	5	0	0	314
Region of Waterloo Public Health and Emergency Services	22	0	0	284
Renfrew County and District Health Unit	0	0	0	0
Simcoe Muskoka District Health Unit	296	1	9	711
Southwestern Public Health	5	0	0	45
Thunder Bay District Health Unit	0	0	0	2
Timiskaming Health Unit	0	1	0	5
Toronto Public Health	305	7	21	6,015

Public Health Unit Name	Cumulative count for Lineage B.1.1.7	Cumulative count for Lineage B.1.351	Cumulative count for Lineage P.1	Cumulative count for mutation detected (lineage not determined)
Wellington-Dufferin-Guelph Public Health	6	0	0	143
Windsor-Essex County Health Unit	3	0	0	52
York Region Public Health	296	2	8	1,770
TOTAL ONTARIO	1,389	50	47	14,803

Note: Interpret the VOC and mutation trends with caution due to the varying time required to complete VOC testing and/or genomic analysis following the initial positive test for SARS-CoV-2. Due to the nature of the genomic analysis, test results may be completed in batches. Data corrections or updates can result in case records being removed and/or updated and may result in totals differing from past publicly reported case counts. Data for calculating the change in cases and the cumulative case count uses data from the Investigation Subtype field only.

Mutation detected includes all confirmed COVID-19 cases with a lineage or mutation detected reported in the Investigation subtype field excluding B.1.1.7, B.1.351, and P.1 lineages.

Data Source: CCM

Table A3. Weekly percent positivity for cases tested for mutations or VOCs over recent rolling 7-day periods, by reported date and public health unit: Ontario, March 6 to March 18, 2021

Public Health Unit Name	March 6 to March 12	March 7 to March 13	March 8 to March 14	March 9 to March 15	March 10 to March 16	March 11 to March 17	March 12 to March 18
Algoma Public Health	0.0	0.0	0.0	0.0	0.0	0.0	0.0
Brant County Health Unit	18.4	20.0	19.8	17.5	21.4	16.4	19.1
Chatham-Kent Public Health	7.1	6.2	1.7	1.5	1.5	11.8	13.0
City of Hamilton Public Health Services	35.5	33.4	33.9	34.3	36.8	38.1	37.5
Durham Region Health Department	53.0	54.4	58.1	58.5	61.1	62.9	66.3
Eastern Ontario Health Unit	35.2	38.9	40.0	41.6	46.7	47.4	50.9
Grey Bruce Health Unit	25.0	37.5	37.5	33.3	30.0	20.0	33.3
Haldimand-Norfolk Health Unit	38.5	48.8	53.7	56.5	57.8	55.0	51.1
Haliburton, Kawartha, Pine Ridge District Health Unit	46.2	51.7	48.1	50.0	56.0	51.7	50.0
Halton Region Public Health	34.4	35.2	37.1	39.8	39.3	39.2	39.6
Hastings Prince Edward Public Health	15.4	21.4	23.1	25.0	28.6	42.9	60.0
Huron Perth Public Health	4.3	8.3	8.7	8.7	11.5	15.8	17.6
Kingston, Frontenac and Lennox & Addington Public Health	63.6	65.2	69.0	70.6	64.3	45.1	42.1
Lambton Public Health	16.8	19.0	18.3	19.0	18.6	17.6	17.3

Public Health Unit Name	March 6 to March 12	March 7 to March 13	March 8 to March 14	March 9 to March 15	March 10 to March 16	March 11 to March 17	March 12 to March 18
Leeds, Grenville & Lanark District Health Unit	13.2	14.5	11.0	14.1	13.7	14.0	13.3
Middlesex-London Health Unit	11.3	11.3	12.3	13.9	13.5	12.2	12.7
Niagara Region Public Health	38.2	37.8	40.1	38.1	35.0	33.6	34.3
North Bay Parry Sound District Health Unit	0.0	0.0	0.0	0.0	0.0	0.0	42.9
Northwestern Health Unit	4.3	4.5	4.5	1.5	0.0	0.0	0.0
Ottawa Public Health	16.6	17.3	18.4	20.0	25.7	29.6	32.5
Peel Public Health	49.3	51.3	52.4	53.7	52.1	53.0	52.7
Peterborough Public Health	84.1	84.6	84.0	82.6	81.0	80.4	79.1
Porcupine Health Unit	0.0	0.0	0.0	0.0	0.0	0.0	0.0
Public Health Sudbury & Districts	57.2	55.3	55.8	56.7	59.7	59.0	56.2
Region of Waterloo Public Health and Emergency Services	24.0	28.2	27.4	27.2	28.7	31.3	31.1
Renfrew County and District Health Unit	0.0	0.0	0.0	0.0	0.0	0.0	0.0
Simcoe Muskoka District Health Unit	58.0	57.5	57.8	58.8	60.6	59.7	61.8
Southwestern Public Health	29.2	29.8	32.7	33.3	33.3	40.3	41.0
Thunder Bay District Health Unit	0.3	0.3	0.3	0.5	0.6	0.6	0.3

Public Health Unit Name	March 6 to March 12	March 7 to March 13	March 8 to March 14	March 9 to March 15	March 10 to March 16	March 11 to March 17	March 12 to March 18
Timiskaming Health Unit	0.0	0.0	0.0	0.0	50.0	50.0	80.0
Toronto Public Health	54.5	56.9	59.1	60.1	62.4	63.5	65.0
Wellington-Dufferin-Guelph Public Health	38.1	39.7	41.6	37.8	35.8	38.2	36.9
Windsor-Essex County Health Unit	3.0	2.9	2.9	3.8	5.1	6.3	5.9
York Region Public Health	48.7	51.9	53.3	53.3	57.7	59.2	58.7
TOTAL ONTARIO	41.6	43.6	44.7	45.2	46.7	48.0	49.2

Note: Data for calculating the number of cases tested for mutations common to VOCs or lineages using genomic analyses are obtained using information from the Laboratory object in CCM in addition to the data from the Investigation subtype field. Therefore, comparisons to counts using only information from the Investigation Subtype field may not align. The percent of cases due to a VOC may be higher than described in this report. While all confirmed COVID-19 cases are included in the denominator, not all cases were able to be tested for VOCs.

Percent positivity is based on the sum of the daily cases that test positive divided by the number of cases reported during the date ranges specified in each column.

Data Source: CCM.

Disclaimer

This document was developed by Public Health Ontario (PHO). PHO provides scientific and technical advice to Ontario's government, public health organizations and health care providers. PHO's work is guided by the current best available evidence at the time of publication.

The application and use of this document is the responsibility of the user. PHO assumes no liability resulting from any such application or use.

This document may be reproduced without permission for non-commercial purposes only and provided that appropriate credit is given to PHO. No changes and/or modifications may be made to this document without express written permission from PHO.

Citation

Ontario Agency for Health Protection and Promotion (Public Health Ontario). Epidemiologic summary: COVID-19 in Ontario – January 15, 2020 to March 23, 2021. Toronto, ON: Queen's Printer for Ontario; 2021.

For Further Information

For more information, email cd@oahpp.ca.

Public Health Ontario

Public Health Ontario is an agency of the Government of Ontario dedicated to protecting and promoting the health of all Ontarians and reducing inequities in health. Public Health Ontario links public health practitioners, front-line health workers and researchers to the best scientific intelligence and knowledge from around the world.

For more information about PHO, visit publichealthontario.ca.

