

DAILY EPIDEMIOLOGICAL SUMMARY

COVID-19 in Ontario: January 15, 2020 to May 31, 2021

This report includes the most current information available from CCM as of **May 31, 2021**.

Please visit the interactive [Ontario COVID-19 Data Tool](#) to explore recent COVID-19 data by public health unit, age group, sex, and trends over time.

A [weekly summary report](#) is available with additional information to complement the daily report.

This **daily** report provides an epidemiologic summary of recent COVID-19 activity in Ontario. The change in cases is determined by taking the cumulative difference between the current day and the previous day.

Highlights

- There are a total of 532,158 confirmed cases of COVID-19 in Ontario reported to date.
- Compared to the previous day, this represents:
 - An increase of 699 confirmed cases (percent change of -23.7%)
 - An increase of 9 deaths (percent change of -30.8%)
 - An increase of 1,568 resolved cases (percent change of -8.1%)

In this document, the term 'change in cases' refers to cases publicly reported by the province for a given day. Data corrections or updates can result in case records being removed and or updated from past reports and may result in subset totals for updated case counts (i.e., age group, gender) differing from the overall updated case counts.

The term public health unit reported date in this document refers to the date local public health units were first notified of the case.

Case Characteristics

Table 1a. Summary of recent confirmed cases of COVID-19: Ontario

	Change in cases May 30, 2021	Change in cases May 31, 2021	Percentage change May 31, 2021 compared to May 30, 2021	Cumulative case count as of May 31, 2021
Total number of cases	916	699	-23.7%	532,158
Number of deaths	13	9	-30.8%	8,766
Number resolved	1,707	1,568	-8.1%	511,703

Note: The number of cases publicly reported by the province each day may not align with case counts reported to public health on a given day; public health unit reported date refers to the date local public health was first notified of the case. Data corrections or updates can result in case records being removed and or updated from past reports.

Data Source: CCM

Table 1b. Summary of recent confirmed cases of COVID-19 by age group and gender: Ontario

	Change in cases May 30, 2021	Change in cases May 31, 2021	Cumulative case count as of May 31, 2021
Gender: Male	466	362	264,840
Gender: Female	454	348	263,045
Ages: 19 and under	242	159	84,648
Ages: 20-39	359	281	199,277
Ages: 40-59	210	186	152,393
Ages: 60-79	90	66	70,984
Ages: 80 and over	14	7	24,758

Note: Not all cases have a reported age or gender reported. Data corrections or updates can result in case records being removed and or updated from past reports and may result in subset totals (i.e., age group, gender) differing from past publicly reported case counts.

Data Source: CCM

Table 2. Summary of recent confirmed cases of COVID-19 in school aged children by age group, August 30, 2020 to May 31, 2021: Ontario

	Change in cases May 30, 2021	Change in cases May 31, 2021	Cumulative case count from August 30, 2020 to May 31, 2021
Ages: 4 to 8	55	37	15,545
Ages: 9 to 13	51	30	19,603
Ages: 14 to 17	65	38	19,969

Note: Includes all confirmed cases of COVID-19 for specified ages, regardless of school attendance. Data corrections or updates can result in case records being removed and or updated from past reports and may result in subset totals (i.e., age group) differing from past publicly reported case counts.

Data Source: CCM

Table 3. Summary of recent confirmed cases of COVID-19 in long-term care homes: Ontario

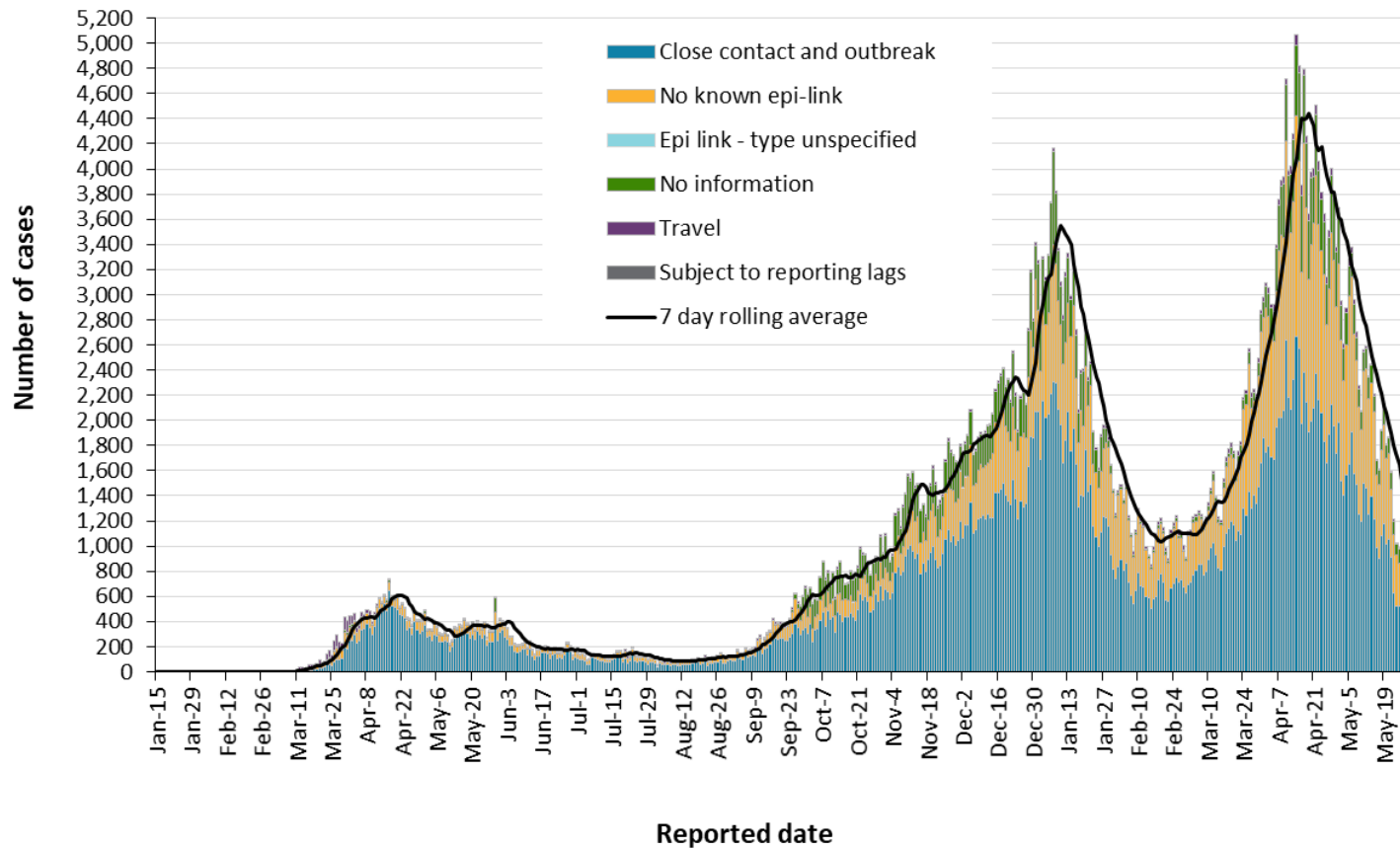
Long-term care home cases	Change in cases May 30, 2021	Change in cases May 31, 2021	Cumulative case count as of May 31, 2021
Residents	2	-1	15,304
Health care workers	3	3	7,105
Deaths among residents	0	0	3,950
Deaths among health care workers	0	0	10

Note: Information on how long-term care home residents and health care workers are identified is available in the [technical notes](#). Also, the change in cases in these categories may represent existing case records that have been updated.

Data Source: CCM

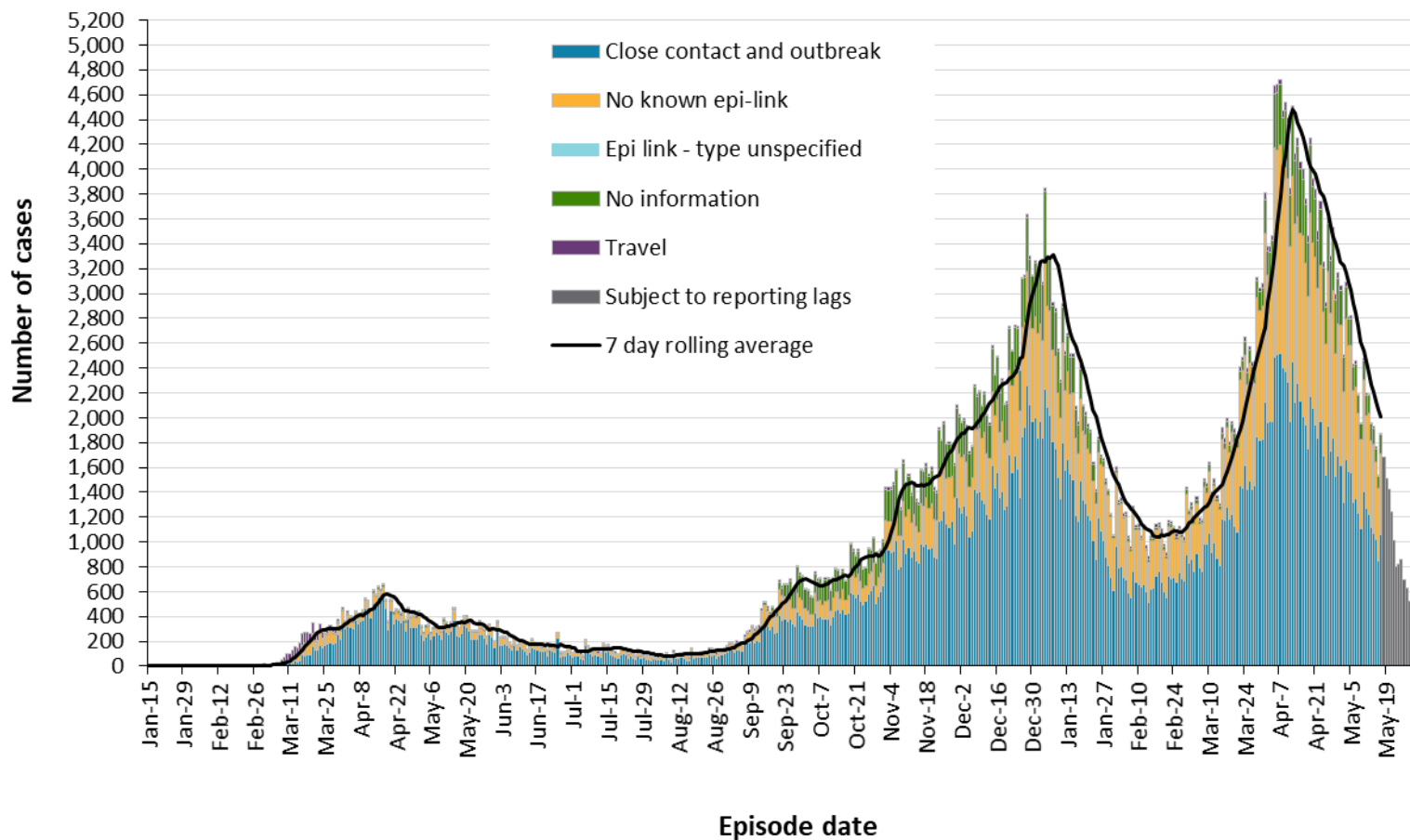
Time

Figure 1. Confirmed cases of COVID-19 by likely acquisition and public health unit reported date: Ontario, January 15, 2020 to May 31, 2021



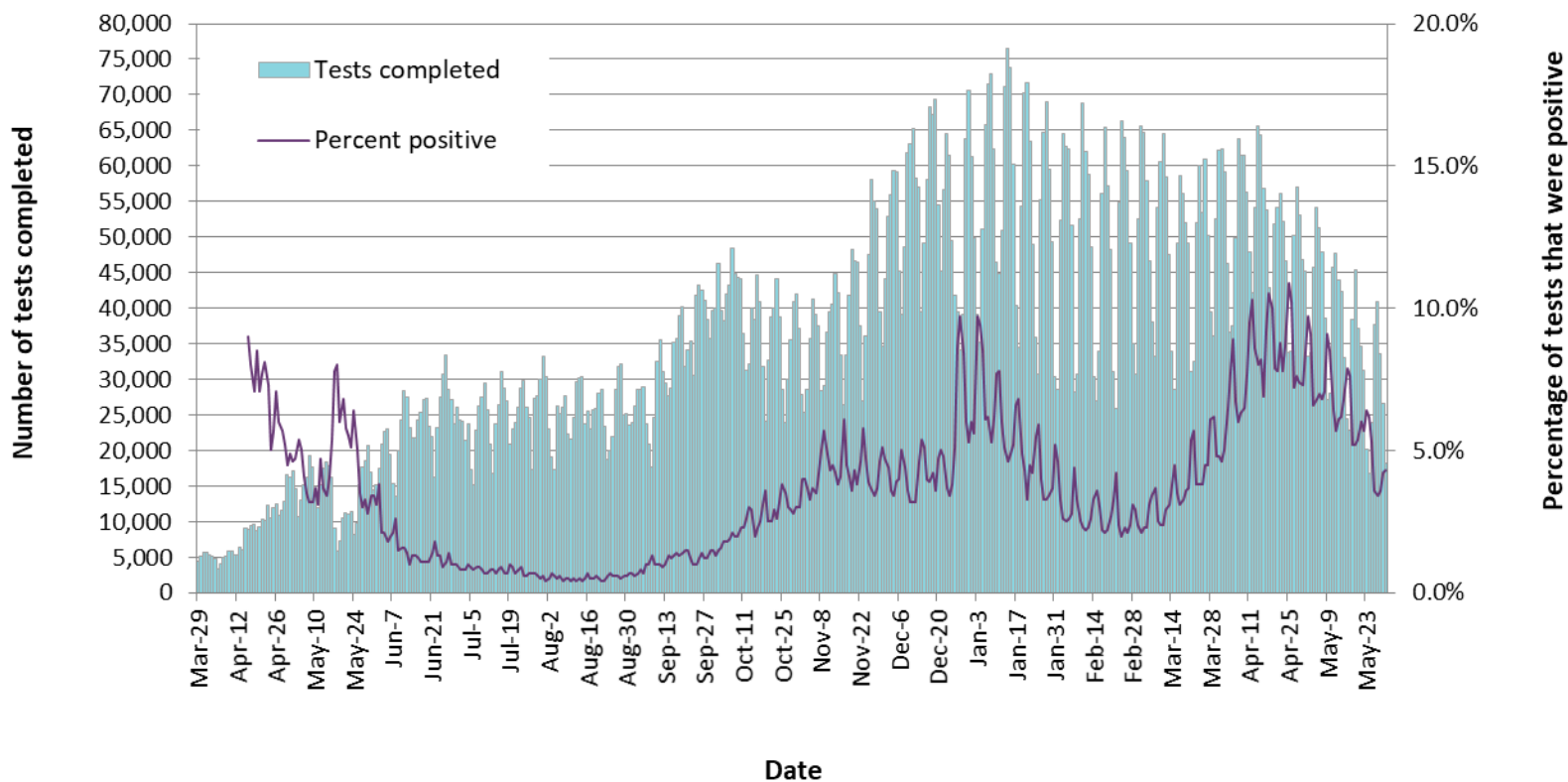
Data Source: CCM

Figure 2. Confirmed cases of COVID-19 by likely acquisition and approximation of symptom onset date: Ontario, January 15, 2020 to May 31, 2021



Note: Not all cases may have an episode date and those without one are not included in the figure. Episode date is defined and available in the [technical notes](#).
Data Source: CCM

Figure 3. Number of COVID-19 tests completed and percent positivity: Ontario, March 29, 2020 to May 30, 2021

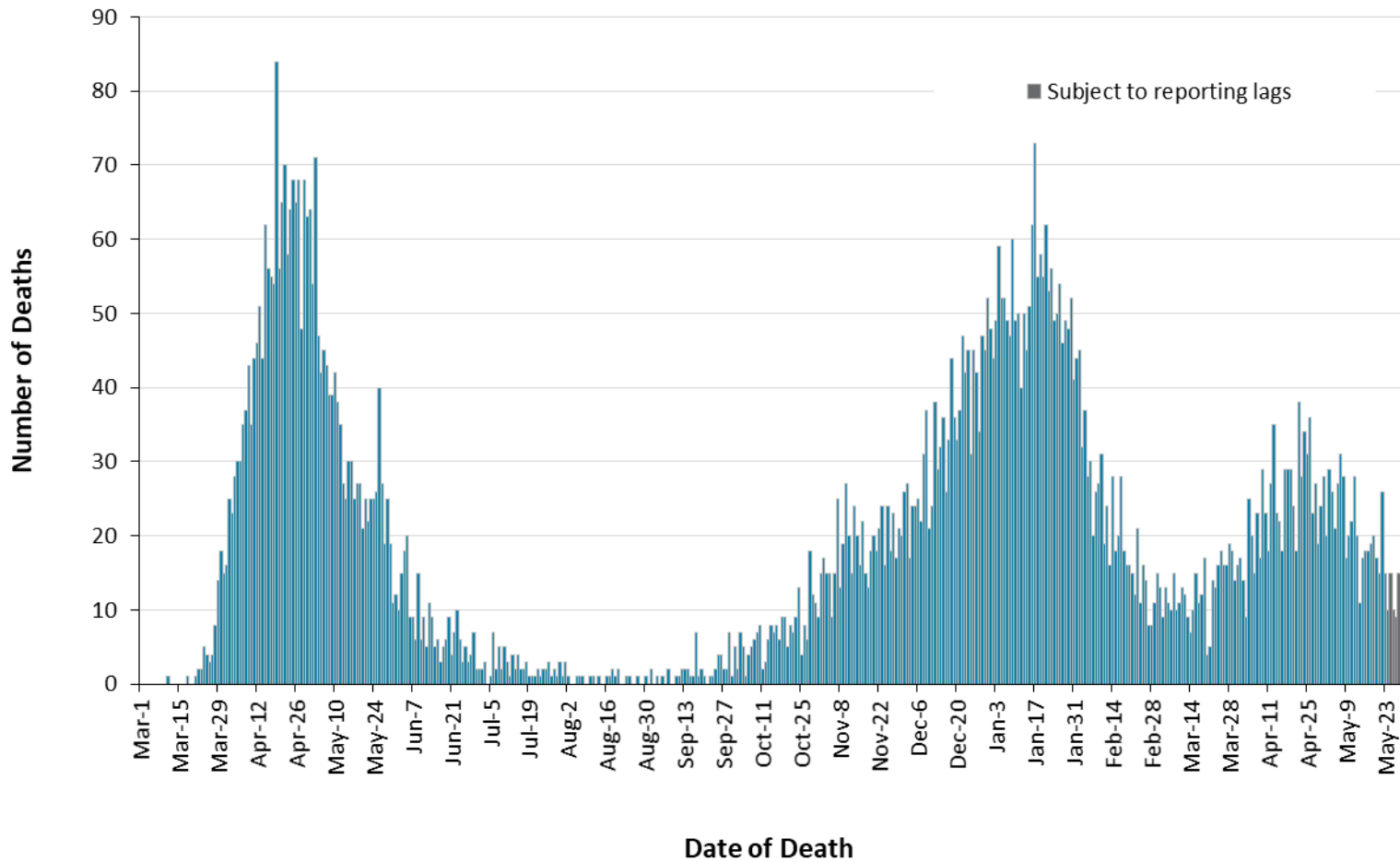


Note: The number of tests performed does not reflect the number of specimens or persons tested. More than one test may be performed per specimen or per person. As such, the percentage of tests that were positive does not necessarily translate to the number of specimens or persons testing positive.

Data Source: The Provincial COVID-19 Diagnostics Network, data reported by member microbiology laboratories.

Severity

Figure 4. Confirmed deaths among COVID-19 cases by date of death: Ontario, March 1, 2020 to May 31, 2021



Note: Cases without a death date are not included in the figure.

Data Source: CCM

Table 4. Confirmed cases of COVID-19 by severity: Ontario

	Cumulative case count as of May 31, 2021	Percentage of all cases
Cumulative deaths reported (please note there may be a reporting delay for deaths)	8,766	1.6%
Deaths reported in ages: 19 and under	4	<0.1%
Deaths reported in ages: 20-39	70	<0.1%
Deaths reported in ages: 40-59	507	0.3%
Deaths reported in ages: 60-79	2,715	3.8%
Deaths reported in ages: 80 and over	5,469	22.1%
Ever in ICU	5,031	0.9%
Ever hospitalized	26,629	5.0%

Note: Not all cases have an age reported. Data corrections or updates can result in case records being removed and/or updated and may result in totals differing from past publicly reported case counts.

Data Source: CCM

Geography

Table 5. Summary of recent confirmed cases of COVID-19 by public health unit and region: Ontario

Public Health Unit Name	Change in cases May 30, 2021	Change in cases May 31, 2021	Cumulative case count	Cumulative rate per 100,000 population
Northwestern Health Unit	1	0	1,064	1,213.6
Thunder Bay District Health Unit	9	3	3,237	2,158.6
TOTAL NORTH WEST	10	3	4,301	1,809.9
Algoma Public Health	0	0	393	343.4
North Bay Parry Sound District Health Unit	1	1	448	345.3
Porcupine Health Unit	30	14	1,371	1,643.1
Public Health Sudbury & Districts	1	1	2,073	1,041.6
Timiskaming Health Unit	0	0	205	627.1
TOTAL NORTH EAST	32	16	4,490	802.7
Ottawa Public Health	50	39	27,079	2,567.6
Eastern Ontario Health Unit	3	0	4,607	2,207.4
Hastings Prince Edward Public Health	0	2	1,122	665.9
Kingston, Frontenac and Lennox & Addington Public Health	0	0	1,522	715.5
Leeds, Grenville & Lanark District Health Unit	0	0	1,733	1,000.8
Renfrew County and District Health Unit	1	2	716	659.1
TOTAL EASTERN	54	43	36,779	1,909.2

Public Health Unit Name	Change in cases May 30, 2021	Change in cases May 31, 2021	Cumulative case count	Cumulative rate per 100,000 population
Durham Region Health Department	67	50	24,613	3,454.9
Haliburton, Kawartha, Pine Ridge District Health Unit	11	4	2,061	1,090.8
Peel Public Health	165	144	107,509	6,694.4
Peterborough Public Health	1	1	1,498	1,012.3
Simcoe Muskoka District Health Unit	20	18	12,047	2,009.2
York Region Public Health	85	52	51,960	4,238.9
TOTAL CENTRAL EAST	349	269	199,688	4,456.7
Toronto Public Health	226	207	162,227	5,199.0
TOTAL TORONTO	226	207	162,227	5,199.0
Chatham-Kent Public Health	5	2	1,859	1,748.5
Grey Bruce Health Unit	1	3	1,299	764.6
Huron Perth Public Health	3	1	1,845	1,320.1
Lambton Public Health	0	5	3,490	2,664.9
Middlesex-London Health Unit	20	11	12,246	2,412.9
Southwestern Public Health	4	3	3,791	1,792.5
Windsor-Essex County Health Unit	23	19	16,571	3,900.6
TOTAL SOUTH WEST	56	44	41,101	2,430.9
Brant County Health Unit	9	6	3,713	2,392.4
City of Hamilton Public Health Services	52	44	20,560	3,472.0

Public Health Unit Name	Change in cases May 30, 2021	Change in cases May 31, 2021	Cumulative case count	Cumulative rate per 100,000 population
Haldimand-Norfolk Health Unit	2	-1	2,616	2,293.1
Halton Region Public Health	26	17	16,981	2,742.9
Niagara Region Public Health	43	16	15,776	3,338.9
Region of Waterloo Public Health and Emergency Services	49	25	15,971	2,733.1
Wellington-Dufferin-Guelph Public Health	8	10	7,955	2,550.4
TOTAL CENTRAL WEST	189	117	83,572	2,933.1
TOTAL ONTARIO	916	699	532,158	3,580.1

Notes: Health units with data corrections or updates could result in records being removed from totals resulting in negative counts.

Data Source: CCM

Outbreaks

Table 6. Summary of recent confirmed COVID-19 outbreaks reported in long-term care homes, retirement homes and hospitals by status: Ontario

Institution type	Change in outbreaks May 30, 2021	Change in outbreaks May 31, 2021	Number of ongoing outbreaks	Cumulative number of outbreaks reported
Long-term care homes	2	0	28	1,475
Retirement homes	0	0	15	871
Hospitals	0	2	17	564

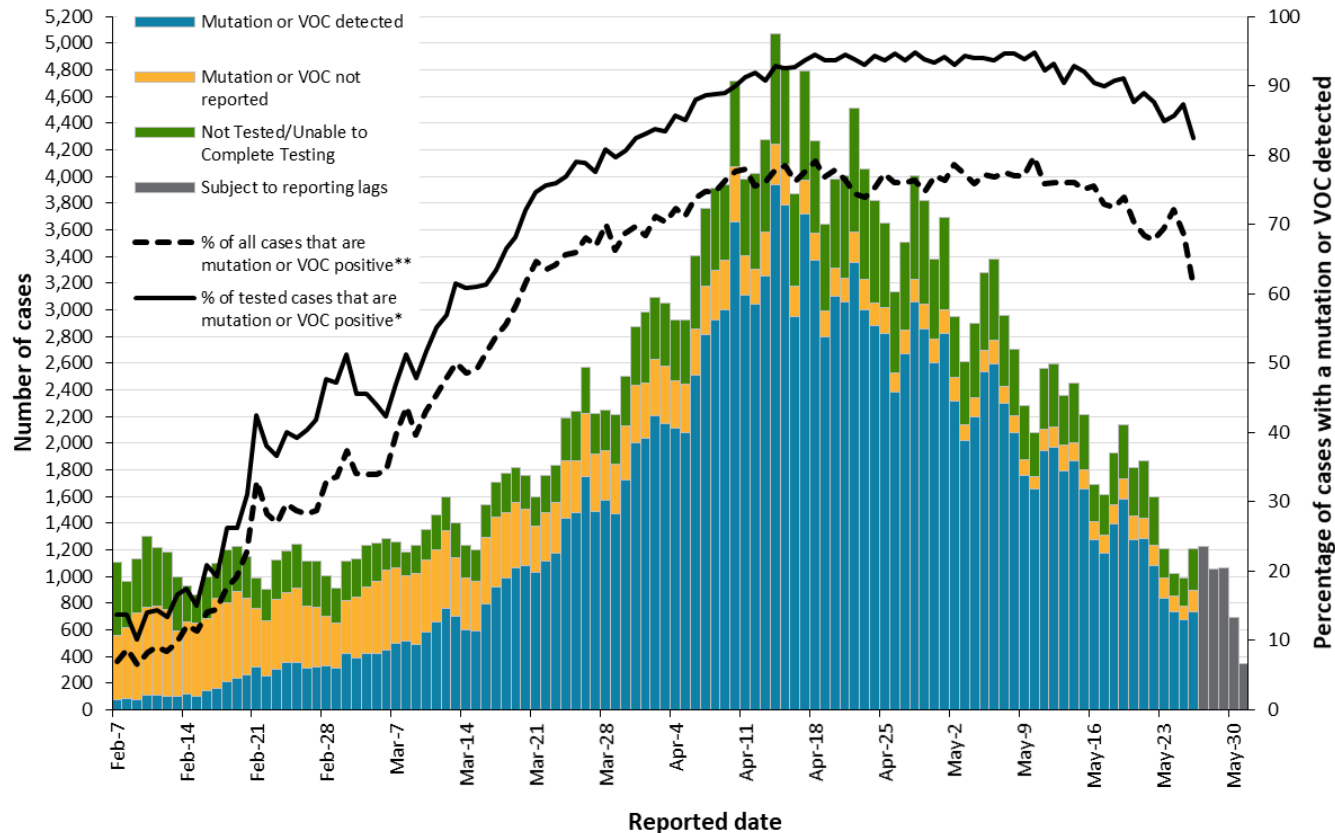
Note: Ongoing outbreaks include all outbreaks that are 'Open' in CCM without a 'Declared Over Date' recorded, or where the outbreak started more than five months ago, even for outbreaks where the Outbreak Status value selected in CCM is 'OPEN'. The start of the outbreak is determined by the onset date of first case, or if missing the outbreak reported date, or else if that is also missing, then the outbreak created date.

Data Source: CCM

Variant COVID-19 Cases

The laboratory detection of a variant of concern (VOC) is a multi-step process. Samples that test positive for SARS-CoV-2 and have a cycle threshold (Ct) value ≤ 35 can be tested for mutations common to variants of concern. If positive for the mutation of interest with a Ct value of ≤ 30 , these samples may then undergo genomic analyses to identify the VOC lineage. VOC lineages may still be confirmed using genomic analysis despite specific S gene mutation(s) being documented as 'unable to complete' due to poor sequence quality at the genome position.

Figure 5. Number of confirmed COVID-19 cases and percent positive for mutations or VOCs: Ontario, February 7, 2021 to May 31, 2021



Note: Data used to calculate the number of cases tested for mutations common to VOCs or lineages using genomic analyses are obtained using information from the Laboratory object in CCM in addition to the data from the Investigation Subtype field. Therefore, comparisons to counts using only information from the Investigation Subtype field may not align. The percent of cases due to a VOC may be higher than described in this report.

*The denominator includes only confirmed COVID-19 cases that were able to be tested for VOCs (e.g. those identified as 'Detected' or 'Not Detected').

**The denominator includes all confirmed COVID-19 cases, including those that were unable to be tested for VOCs (e.g. those identified as 'Detected', 'Not Detected' and 'Not Tested/Unable to Complete Testing').

Data Source: CCM

Table 7. Summary of confirmed COVID-19 cases with a mutation or VOC detected: Ontario

	Change in cases May 30, 2021	Change in cases May 31, 2021	Cumulative case count up to May 31, 2021
Variant of Concern			
Lineage B.1.1.7*	910	762	126,707
Lineage B.1.351	1	1	949
Lineage P.1	8	45	2,867
Mutations			
N501Y and E484K	31	-17	6,410
N501Y (E484K unknown)**	-127	-140	21,009
E484K (N501Y negative)	63	50	5,355
E484K (N501Y unknown)	-19	-6	560

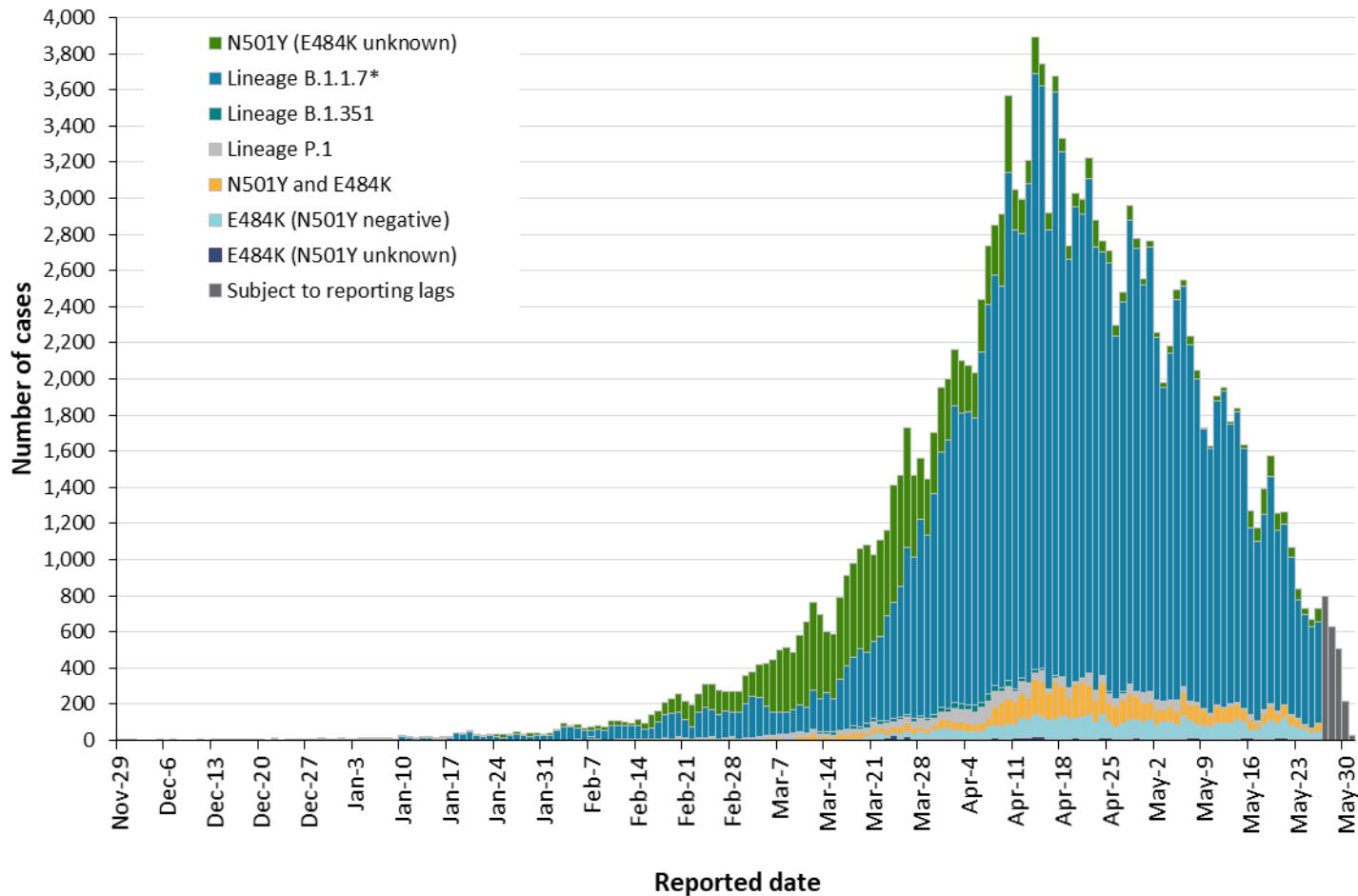
Note: Interpret the VOC and mutation trends with caution due to the varying time required to complete VOC testing and/or genomic analysis following the initial positive test for SARS-CoV-2. Due to the nature of the genomic analysis, test results may be completed in batches. Data corrections or updates can result in case records being removed and/or updated and may result in totals differing from past publicly reported case counts. Data for calculating the change in cases and the cumulative case counts uses data from the Investigation Subtype field only. Changes to the VOC testing algorithm may impact counts and trends. Further details can be found in the [data caveats](#) section.

*Includes all confirmed COVID-19 cases where lineage B.1.1.7 was identified by genomic analysis and those presumed to be B.1.1.7 based on positive N501Y and negative E484K mutation in the Investigation Subtype field

**The category 'N501Y (E484K unknown)' mainly consists of results from before the introduction of the E484K test. Counts will shift from this category into a VOC lineage category as E484K tests or genomic analysis are completed.

Data Source: CCM

Figure 6. Confirmed COVID-19 cases with a mutation or VOC detected by public health unit reported date: Ontario, November 29, 2020 to May 31, 2021



Note: Reported date is based on the date the case was reported, not the date that the VOC or mutation was identified. Further details on testing for variants of concern can be found in the [technical notes](#). Interpret the VOC and mutation trends with caution due to the varying time required to complete testing and/or genomic analysis following the initial positive test for SARS-CoV-2. Data for calculating the change in cases and the cumulative case count uses data from the Investigation

Subtype field only. Data for cases with a B.1.1.7, B.1.351, and P.1 lineage detected or any of the mutations listed above are determined using the Investigation Subtype field only. Changes to the VOC testing algorithm may impact counts and trends. Further details can be found in the [data caveats](#) section.

*Includes all confirmed COVID-19 cases where lineage B.1.1.7 was identified by genomic analysis and those presumed to be B.1.1.7 based on positive N501Y and negative E484K mutation. As of March 22, 2021, positive specimens with a Ct \leq 35 are tested for both the N501Y and E484K mutation, with all E484K positive specimens with a Ct \leq 30 forwarded for further genomic analysis. If found to be positive for the N501Y mutation only, no further genomic analysis are performed as these are presumed to be B.1.1.7. As of May 30, 2021, cases where an E484K mutation is detected will no longer be reflexed for sequencing as VOC testing labs switched to a representative sampling method where only a proportion of all positives with a Ct \leq 30 are forwarded for further genomic analysis. This proportion was initially set at 10% and will be adjusted periodically based on case volumes.

Data Source: CCM

Technical Notes

Data Sources

- The data for this report were based on information successfully extracted from the Public Health Case and Contact Management Solution (CCM) for all PHUs by PHO as of **May 31, 2021 at 1 p.m.** for cases reported from February 1, 2021 onwards and as of **May 31, 2021 at 9 a.m.** for cases reported up to January 31, 2021.
- CCM is a dynamic disease reporting system, which allows ongoing updates to data previously entered. As a result, data extracted from CCM represent a snapshot at the time of extraction and may differ from previous or subsequent reports.
- Ontario population projection data for 2020 were sourced from Ministry, IntelliHEALTH Ontario. Data were extracted on November 26, 2019.
- COVID-19 test data were based on information from The Provincial COVID-19 Diagnostics Network, reported by member microbiology laboratories.

Data Caveats

- The data only represent cases reported to public health units and recorded in CCM. As a result, all counts will be subject to varying degrees of underreporting due to a variety of factors, such as disease awareness and medical care seeking behaviours, which may depend on severity of illness, clinical practice, changes in laboratory testing, and reporting behaviours.
- Lags in CCM data entry due to weekend staffing may result in lower case counts than would otherwise be recorded.
- Only cases meeting the confirmed case classification as listed in the [MOH Case Definition – Coronavirus Disease \(COVID-19\) document](#) are included in the report counts from CCM
- Cases of confirmed reinfection, as defined in the provincial case definitions, are counted as unique investigations.
- Case classification information may be updated for individuals with a positive result issued from a point-of-care assays.
- The number of tests performed does not reflect the number of specimens or persons tested. More than one test may be performed per specimen or per person. As such, the percentage of tests that were positive does not necessarily translate to the number of specimens or persons testing positive.
- Reported date is the date the case was reported to the public health unit.
- Case episode date is based on an estimate of the best date of disease onset. This date is calculated based on either the date of symptom onset, specimen collection/test date, or the date reported to the public health unit.
- Resolved cases are determined only for COVID-19 cases that have not died. Cases that have died are considered fatal and not resolved. The following cases are classified as resolved:

- Cases that are reported as ‘recovered’ in CCM
- Cases that are not hospitalized and are 14 days past their episode date
- Cases that are currently hospitalized (no hospital end date entered) and have a status of ‘closed’ in CCM (indicating public health unit follow-up is complete) and are 14 days past their symptom onset date or specimen collection date
- Hospitalization includes all cases for which a hospital admission date was reported at the time of data extraction. It includes cases that have been discharged from hospital as well as cases that are currently hospitalized. Emergency room visits are not included in the number of reported hospitalizations.
- ICU admission includes all cases for which an ICU admission date was reported at the time of data extraction. It is a subset of the count of hospitalized cases. It includes cases that have been treated or that are currently being treated in an ICU.
- Orientation of case counts by geography is based on the diagnosing health unit (DHU). DHU refers to the case's public health unit of residence at the time of illness onset and not necessarily the location of exposure. Cases for which the DHU was reported as MOH-PHO (to signify a case that is not a resident of Ontario) have been excluded from the analyses.
- Likely source of acquisition is determined by examining the epidemiologic link and epidemiologic link status fields in CCM. If no epidemiologic link is identified in those fields the risk factor fields are examined to determine whether a case travelled, was associated with a confirmed outbreak, was a contact of a case, had no known epidemiological link (sporadic community transmission) or was reported to have an unknown source/no information was reported. Some cases may have no information reported if the case is untraceable, was lost to follow-up or referred to FNIHB. Cases with multiple risk factors were assigned to a single likely acquisition source group which was determined hierarchically in the following order:
 - For cases with an episode date *on or after* April 1, 2020: Outbreak-associated > close contact of a confirmed case > travel > no known epidemiological link > information missing or unknown
 - For cases with an episode date *before* April 1, 2020: Travel > outbreak-associated > close contact of a confirmed case > no known epidemiological link > information missing or unknown
- Deaths are determined by using the outcome field in CCM. Any case marked ‘Fatal’ is included in the deaths data. The CCM field Type of Death is not used to further categorize the data.
 - The date of death is determined using the outcome date field for cases marked as ‘Fatal’ in the outcome field.
- COVID-19 cases from CCM for which the Classification and/or Disposition was reported as ENTERED IN ERROR, DOES NOT MEET DEFINITION, IGNORE, DUPLICATE or any variation on these values have been excluded. The provincial case count for COVID-19 may include some duplicate records, if these records were not identified and resolved.
- Ongoing outbreaks include all outbreaks that are ‘Open’ in CCM without a ‘Declared Over Date’ recorded, or where the outbreak started more than five months ago, even for outbreaks where

the Outbreak Status value selected in CCM is 'OPEN'. The start of the outbreak is determined by the onset date of first case, or if missing the outbreak reported date, or else if that is also missing, then the outbreak created date.

- 'Long-term care home residents' includes cases that reported 'Yes' to the risk factor 'Resident of a long-term care home'; or 'Yes' to the risk factor 'Resident of nursing home or other chronic care facility' and reported to be part of an outbreak assigned as a long-term care home (via the Outbreak number or case comments field); or were reported to be part of an outbreak assigned as a long-term care home (via the outbreak number or case comments field) with an age over 70 years and did not report 'No' to the risk factors 'Resident of long-term care home' or 'Resident of nursing home or other chronic care facility'. 'Long-term care home residents' excludes cases that reported 'Yes' to any of the health care worker occupational risk factors.
- The 'health care workers' variable includes cases that reported 'Yes' to any of the occupation of health care worker, doctor, nurse, dentist, dental hygienist, midwife, other medical technicians, personal support worker, respiratory therapist, first responder.
- 'Health care workers associated with long-term care outbreaks' includes 'health care workers' reported to be part of an outbreak assigned as a long-term care home (via the outbreak number or case comments field). Excludes cases that reported 'Yes' to risk factors 'Resident of long-term care home' or 'Resident of nursing home or other chronic care facility' and 'Yes' to the calculated 'health care workers' variable.
- Percent change is calculated by taking the difference between the current period (i.e., daily count or sum of the daily count over a 7-day period) and previous period (i.e., daily count or sum of the daily count over a 7-day period), divided by the previous period.
- PANGO lineage B.1.1.7: This lineage was first detected in England in September, 2020. Early evidence suggests that the N501Y mutation may increase SARS-CoV-2 transmissibility. The PANGO lineage B.1.1.7 is assigned to genome sequences with at least 5 of the 17 defining B.1.1.7 SNPs.
- PANGO lineage B.1.351 (also known as 501Y.V2): This lineage was first detected October, 2020 in South Africa and has several mutations of concern, including spike (S) gene: N501Y, K417N, and E484K. Early evidence suggests that these mutations may increase SARS-CoV-2 transmissibility and decrease vaccine efficacy. The PANGO lineage B.1.351 will be assigned to genome sequences at least 5 of the 9 defining B.1.351 SNPs.
- PANGO lineage P.1 (also known as 501Y.V3): This lineage was first detected January, 2021 in Brazil and has several mutations of concern, including spike (S) gene N501Y, K417T, and E484K. Early evidence suggests that these mutations may increase SARS-CoV-2 transmissibility and decrease vaccine efficacy. The PANGO lineage P.1 is assigned to genome sequences with more than 10 of the 17 defining P.1 SNPs.
- Public Health Ontario conducts testing and genomic analyses for SARS-CoV-2 positive specimens using the criteria outlined here: <https://www.publichealthontario.ca/en/laboratory-services/test-information-index/covid-19-voc>
- Changes to the VOC testing algorithm may occur over time and trends should be interpreted with caution. Since February 3, 2021 all PCR positive SARS-CoV-2 specimens with Ct values ≤ 35 are tested for a N501Y mutation. As of March 22, 2021, positive specimens with a Ct ≤ 35 are tested for both the N501Y and E484K mutation, with all E484K positive specimens with a Ct ≤ 30

forwarded for further genomic analysis. If found to be positive for the N501Y mutation only, no further genomic analysis are performed as these are presumed to be B.1.1.7. As of May 30, 2021, cases where a E484K mutation is detected will no longer be reflexed for sequencing as VOC testing labs switched to a representative sampling method where only a proportion of all positives with a Ct \leq 30 are forwarded for further genomic analysis. This proportion was initially set at 10% and will be adjusted periodically based on case volumes.

- The laboratory detection of a variant of concern is a multi-step process. Samples that test positive for SARS-CoV-2 and have a cycle threshold (Ct) value \leq 35 can be tested for mutations common to variants of concern. If positive for the mutation of interest with a Ct value of \leq 30, these samples may then undergo genomic analyses to identify the VOC lineage. VOC lineages may still be confirmed using genomic analysis despite specific S gene mutation(s) being documented as 'unable to complete' due to poor sequence quality at the genome position.
- VOC testing data are analyzed for cases with a reported date on or after February 07, 2021. VOC testing data are based on CCM information reported within the laboratory object for select Logical Observation Identifiers Names and Codes (LOINC) and supplemented with information from the Investigation Subtype field. A confirmed Case Investigation is assigned a VOC test value (e.g., VOC test detected, VOC test not detected) based on the following hierarchy:
 - If multiple laboratory results are identified, a VOC test value is assigned based on the following hierarchy: Detected > Not Detected > Unable to complete
 - If a laboratory result is 'Not Detected' or 'Unable to complete', but data on the Investigation Subtype field is listed as a lineage or mutation common to a VOC, then the VOC test value is set to 'Detected'
- If a VOC is identified through genomic analysis cases initially classified as a mutation may be updated and moved to the appropriate lineage (B.1.1.7, B.1.351 and P.1)
- LOINCs are a set of internationally used result description codes. In the absence of a standard LOINC, Ontario Health can create local result codes, which are identified with an 'XON' prefix. LOINCs incorporate details of the result value (e.g. test method, target detected - such as IgG, DNA, isolate etc.) and are unique to each result.
- VOC testing data in this report are assigned on a per case basis. Multiple laboratory results may be associated to a single case investigation, but for analysis purposes are only counted once.
 - The percent of cases that test VOC positive is calculated by taking the number of VOC test positive, divided by the total number of confirmed COVID-19 cases for a given reported date.
- The VOC percent positive may be higher than described in this report. While all confirmed COVID-19 cases are included in the denominator, not all cases were able to be tested for VOCs. As testing algorithms change, the VOC percent positivity may not be reflective of the exact number of COVID-19 cases due to VOCs
- Only CCM case investigations with a CONFIRMED classification have their laboratory records with VOC testing information included in the percent positivity calculations

Appendix A

Table A1. Weekly rates of confirmed COVID-19 cases per 100,000 population over recent rolling 7-day periods, by reported date and public health unit: Ontario, May 16 to May 28, 2021

Public Health Unit Name	May 16 to May 22	May 17 to May 23	May 18 to May 24	May 19 to May 25	May 20 to May 26	May 21 to May 27	May 22 to May 28	% change from May 16 - May 22 to May 22 - May 28
NORTH WEST								
Northwestern Health Unit	24.0	20.5	19.4	20.5	11.4	11.4	11.4	-52.5%
Thunder Bay District Health Unit	10.7	12.0	12.0	12.0	9.3	19.3	25.3	+136.4%
NORTH EAST								
Algoma Public Health	18.4	19.2	17.5	14.9	9.6	8.7	7.9	-57.1%
North Bay Parry Sound District Health Unit	23.9	19.3	17.0	13.1	9.2	9.2	8.5	-64.4%
Porcupine Health Unit	298.4	317.6	332.0	349.9	311.6	286.4	278.0	-6.8%
Public Health Sudbury & Districts	10.6	9.5	9.0	11.1	9.5	9.5	9.5	-10.4%
Timiskaming Health Unit	24.5	24.5	15.3	12.2	9.2	3.1	0.0	-100.0%
EASTERN								
Ottawa Public Health	52.2	51.5	49.4	45.4	44.4	43.2	42.3	-19.0%
Eastern Ontario Health Unit	30.2	27.8	26.4	18.7	18.7	16.3	18.2	-39.7%
Hastings Prince Edward Public Health	23.7	20.8	17.2	18.4	17.2	17.8	14.8	-37.6%
Kingston, Frontenac and Lennox & Addington Public Health	17.9	16.5	12.2	10.8	7.1	6.1	3.3	-81.6%

Public Health Unit Name	May 16 to May 22	May 17 to May 23	May 18 to May 24	May 19 to May 25	May 20 to May 26	May 21 to May 27	May 22 to May 28	% change from May 16 - May 22 to May 22 - May 28
Leeds, Grenville & Lanark District Health Unit	11.5	17.9	17.9	14.4	16.2	15.0	13.3	+15.7%
Renfrew County and District Health Unit	15.6	16.6	13.8	15.6	12.9	16.6	20.3	+30.1%
CENTRAL EAST								
Durham Region Health Department	105.4	103.5	101.8	94.7	85.5	84.9	67.0	-36.4%
Haliburton, Kawartha, Pine Ridge District Health Unit	77.8	86.3	86.3	81.0	72.0	68.3	66.2	-14.9%
Peel Public Health	176.1	168.2	157.9	143.1	134.0	122.5	108.3	-38.5%
Peterborough Public Health	46.0	45.3	42.6	48.0	40.5	40.5	33.8	-26.5%
Simcoe Muskoka District Health Unit	51.0	47.7	45.9	42.2	39.5	39.5	36.0	-29.4%
York Region Public Health	82.2	78.1	73.8	69.5	60.0	58.7	54.6	-33.6%
TORONTO								
Toronto Public Health	106.9	102.2	96.5	89.5	79.8	73.8	66.8	-37.5%
SOUTH WEST								
Chatham-Kent Public Health	16.0	13.2	6.6	4.7	1.9	2.8	2.8	-82.5%
Grey Bruce Health Unit	21.2	20.6	18.2	15.9	8.8	7.1	7.1	-66.5%
Huron Perth Public Health	30.1	30.8	29.3	25.8	26.5	28.6	32.9	+9.3%
Lambton Public Health	40.5	38.2	35.9	27.5	29.8	24.4	22.9	-43.5%
Middlesex-London Health Unit	75.5	78.0	74.3	68.0	59.9	50.0	45.3	-40.0%

Public Health Unit Name	May 16 to May 22	May 17 to May 23	May 18 to May 24	May 19 to May 25	May 20 to May 26	May 21 to May 27	May 22 to May 28	% change from May 16 - May 22 to May 22 - May 28
Southwestern Public Health	38.3	33.6	35.9	31.7	23.6	23.6	25.5	-33.4%
Windsor-Essex County Health Unit	65.2	65.4	60.5	51.3	47.3	45.9	37.2	-42.9%
CENTRAL WEST								
Brant County Health Unit	67.7	62.5	61.2	54.1	57.3	49.6	58.0	-14.3%
City of Hamilton Public Health Services	122.9	114.0	109.8	91.5	83.8	78.0	71.4	-41.9%
Haldimand-Norfolk Health Unit	45.6	43.8	52.6	44.7	38.6	42.1	44.7	-2.0%
Halton Region Public Health	71.1	65.9	63.6	57.7	54.9	52.3	47.7	-32.9%
Niagara Region Public Health	65.2	63.7	58.8	56.1	55.5	52.9	47.8	-26.7%
Region of Waterloo Public Health and Emergency Services	67.1	63.5	58.9	58.0	57.0	50.8	52.0	-22.5%
Wellington-Dufferin-Guelph Public Health	60.3	57.1	56.1	50.0	46.8	46.2	43.0	-28.7%
TOTAL ONTARIO	85.0	81.8	77.8	71.5	65.3	61.3	55.8	-34.4%

Note: Rates are based on the sum of the daily case counts during the date ranges specified in each column.

Data Source: CCM

Table A2. Summary of confirmed COVID-19 cases with a mutation or VOC by public health unit: Ontario as of May 31, 2021

Public Health Unit Name	Cumulative count for Lineage B.1.1.7*	Cumulative count for Lineage B.1.351	Cumulative count for Lineage P.1	Cumulative count for mutations**
Algoma Public Health	62	0	3	35
Brant County Health Unit	605	2	68	480
Chatham-Kent Public Health	103	5	7	115
City of Hamilton Public Health Services	4,877	26	49	1,891
Durham Region Health Department	9,121	38	127	1,314
Eastern Ontario Health Unit	630	40	9	287
Grey Bruce Health Unit	295	0	4	55
Haldimand-Norfolk Health Unit	342	1	10	391
Haliburton, Kawartha, Pine Ridge District Health Unit	403	0	12	310
Halton Region Public Health	4,949	22	122	623
Hastings Prince Edward Public Health	67	0	3	417
Huron Perth Public Health	153	0	2	128
Kingston, Frontenac and Lennox & Addington Public Health	424	1	28	134
Lambton Public Health	400	0	14	112
Leeds, Grenville & Lanark District Health Unit	281	16	0	45
Middlesex-London Health Unit	2,978	1	49	374
Niagara Region Public Health	3,792	0	9	1,049

Public Health Unit Name	Cumulative count for Lineage B.1.1.7*	Cumulative count for Lineage B.1.351	Cumulative count for Lineage P.1	Cumulative count for mutations**
North Bay Parry Sound District Health Unit	110	28	0	16
Northwestern Health Unit	46	0	1	20
Ottawa Public Health	5,443	283	26	635
Peel Public Health	27,615	102	807	4,662
Peterborough Public Health	506	3	3	168
Porcupine Health Unit	621	2	0	7
Public Health Sudbury & Districts	560	3	0	363
Region of Waterloo Public Health and Emergency Services	2,862	6	27	333
Renfrew County and District Health Unit	193	5	2	21
Simcoe Muskoka District Health Unit	3,401	21	113	886
Southwestern Public Health	623	1	4	160
Thunder Bay District Health Unit	57	0	0	49
Timiskaming Health Unit	81	1	0	0
Toronto Public Health	36,946	284	1,039	15,100
Wellington-Dufferin-Guelph Public Health	1,991	0	36	208
Windsor-Essex County Health Unit	1,675	5	6	127
York Region Public Health	14,495	53	287	2,819
TOTAL ONTARIO	126,707	949	2,867	33,334

Note: Interpret the VOC and mutation trends with caution due to the varying time required to complete VOC testing and/or genomic analysis following the initial positive test for SARS-CoV-2. Due to the nature of the genomic analysis, test results may be completed in batches. Data corrections or updates can result in case records being removed and/or updated and may result in totals differing from past publicly reported case counts. Data for calculating the change in cases and the cumulative case count uses data from the Investigation Subtype field only. Changes to the VOC testing algorithm may impact counts and trends. Further details can be found in the [data caveats](#) section.

*Includes all confirmed COVID-19 cases where lineage B.1.1.7 was identified by genomic analysis and those presumed to be B.1.1.7 based on positive N501Y and negative E484K mutation.

**Mutations includes all confirmed COVID-19 cases with the following mutations detected, reported from the Investigation Subtype field: N501Y and E484K, N501Y (E484K unknown), E484K (N501Y negative), E484K (N501Y unknown).

If a VOC is identified through genomic analysis, the change in cases and/or cumulative case counts for mutations will fluctuate as the case is moved to one of the listed lineages.

Data Source: CCM

Table A3. Weekly percent positivity for cases positive for mutations or VOCs over recent rolling 7-day periods using all confirmed cases as the denominator, by reported date and public health unit: Ontario, May 14 to May 26, 2021

Public Health Unit Name	May 14 to May 20	May 15 to May 21	May 16 to May 22	May 17 to May 23	May 18 to May 24	May 19 to May 25	May 20 to May 26
Algoma Public Health	65.0	66.7	66.7	63.6	60.0	52.9	72.7
Brant County Health Unit	71.8	70.5	70.5	73.2	71.6	69.0	71.9
Chatham-Kent Public Health	79.2	76.2	70.6	71.4	85.7	80.0	50.0
City of Hamilton Public Health Services	74.9	75.0	75.3	74.1	74.3	73.8	74.2
Durham Region Health Department	85.6	83.6	81.5	81.8	81.9	81.9	80.5
Eastern Ontario Health Unit	36.9	30.4	31.7	32.8	29.1	30.8	41.0
Grey Bruce Health Unit	79.5	80.0	80.6	74.3	71.0	66.7	60.0
Haldimand-Norfolk Health Unit	64.2	66.7	69.2	72.0	65.0	62.7	61.4
Haliburton, Kawartha, Pine Ridge District Health Unit	86.6	87.2	88.4	85.3	83.4	83.0	81.6
Halton Region Public Health	77.5	76.8	75.0	74.5	76.4	75.6	72.6
Hastings Prince Edward Public Health	84.4	77.1	77.5	74.3	75.9	80.6	75.9
Huron Perth Public Health	76.5	77.3	69.0	65.1	63.4	69.4	64.9
Kingston, Frontenac and Lennox & Addington Public Health	91.5	91.3	92.1	91.4	88.5	87.0	86.7
Lambton Public Health	80.0	75.4	69.8	72.0	74.5	69.4	71.8

Public Health Unit Name	May 14 to May 20	May 15 to May 21	May 16 to May 22	May 17 to May 23	May 18 to May 24	May 19 to May 25	May 20 to May 26
Leeds, Grenville & Lanark District Health Unit	50.0	45.5	45.0	61.3	61.3	68.0	64.3
Middlesex-London Health Unit	83.7	83.1	84.1	84.1	83.0	82.6	80.9
Niagara Region Public Health	61.5	49.3	42.2	34.6	33.1	28.7	23.3
North Bay Parry Sound District Health Unit	22.6	20.0	19.4	20.0	13.6	11.8	16.7
Northwestern Health Unit	30.4	35.0	33.3	22.2	23.5	16.7	10.0
Ottawa Public Health	44.7	44.0	42.8	41.3	39.5	39.0	39.1
Peel Public Health	66.2	64.4	62.6	61.8	62.1	60.9	59.4
Peterborough Public Health	85.0	82.9	80.9	79.1	79.4	85.9	86.7
Porcupine Health Unit	75.0	74.1	74.3	72.5	70.0	67.5	66.2
Public Health Sudbury & Districts	76.0	79.2	81.0	78.9	77.8	81.8	78.9
Region of Waterloo Public Health and Emergency Services	69.2	68.5	69.4	68.7	69.2	68.4	68.5
Renfrew County and District Health Unit	64.0	62.5	58.8	66.7	73.3	58.8	57.1
Simcoe Muskoka District Health Unit	80.7	82.0	80.4	79.7	77.1	76.7	70.9
Southwestern Public Health	90.2	86.0	85.2	85.9	86.8	86.6	82.0
Thunder Bay District Health Unit	68.8	62.5	62.5	66.7	66.7	66.7	57.1
Timiskaming Health Unit	57.1	62.5	62.5	62.5	80.0	100.0	100.0

Public Health Unit Name	May 14 to May 20	May 15 to May 21	May 16 to May 22	May 17 to May 23	May 18 to May 24	May 19 to May 25	May 20 to May 26
Toronto Public Health	80.1	79.4	78.8	78.1	77.8	77.5	75.4
Wellington-Dufferin-Guelph Public Health	69.7	70.4	69.7	68.0	69.1	71.2	67.8
Windsor-Essex County Health Unit	68.8	68.2	67.5	67.6	67.3	69.3	72.6
York Region Public Health	83.8	82.4	81.9	81.9	82.0	81.8	79.0
TOTAL ONTARIO	73.8	72.7	71.6	70.9	70.7	70.2	68.2

Note: Data for calculating the number of cases tested for mutations common to VOCs or lineages using genomic analyses are obtained using information from the Laboratory object in CCM in addition to the data from the Investigation subtype field. Therefore, comparisons to counts using only information from the Investigation Subtype field may not align. The percent of cases due to a VOC may be higher than described in this report. While all confirmed COVID-19 cases are included in the denominator, not all cases were able to be tested for VOCs. Percent positivity is based on the sum of the daily cases that test positive divided by the number of cases reported during the date ranges specified in each column.

Data Source: CCM

Table A4. Weekly percent positivity for cases positive for mutations or VOCs over recent rolling 7-day periods using cases tested for mutations or VOCs as the denominator, by reported date and public health unit: Ontario, May 14 to May 26, 2021

Public Health Unit Name	May 14 to May 20	May 15 to May 21	May 16 to May 22	May 17 to May 23	May 18 to May 24	May 19 to May 25	May 20 to May 26
Algoma Public Health	100.0	100.0	100.0	100.0	100.0	100.0	88.9
Brant County Health Unit	84.8	84.0	87.1	92.2	91.9	90.6	94.1
Chatham-Kent Public Health	100.0	100.0	100.0	100.0	100.0	100.0	100.0
City of Hamilton Public Health Services	88.2	87.9	87.1	86.2	86.6	87.1	88.0
Durham Region Health Department	96.0	93.5	92.6	92.8	92.4	91.9	90.7
Eastern Ontario Health Unit	96.9	95.5	95.2	95.0	94.1	100.0	94.1
Grey Bruce Health Unit	100.0	100.0	100.0	96.3	95.7	94.7	90.0
Haldimand-Norfolk Health Unit	93.5	94.7	94.7	92.3	81.3	80.0	77.1
Haliburton, Kawartha, Pine Ridge District Health Unit	97.0	97.9	97.7	97.9	96.5	96.2	95.7
Halton Region Public Health	94.0	93.9	92.2	90.7	91.2	90.9	88.8
Hastings Prince Edward Public Health	100.0	100.0	100.0	100.0	100.0	100.0	100.0
Huron Perth Public Health	95.1	94.4	93.5	93.3	92.9	100.0	88.9
Kingston, Frontenac and Lennox & Addington Public Health	97.7	97.7	100.0	100.0	100.0	100.0	100.0
Lambton Public Health	91.7	84.3	82.2	81.8	81.4	80.6	82.4

Public Health Unit Name	May 14 to May 20	May 15 to May 21	May 16 to May 22	May 17 to May 23	May 18 to May 24	May 19 to May 25	May 20 to May 26
Leeds, Grenville & Lanark District Health Unit	92.9	90.9	90.0	100.0	100.0	100.0	100.0
Middlesex-London Health Unit	94.2	94.2	95.3	95.1	94.8	94.7	95.3
Niagara Region Public Health	98.7	98.8	100.0	100.0	93.9	91.6	89.7
North Bay Parry Sound District Health Unit	35.0	33.3	35.3	41.7	37.5	40.0	40.0
Northwestern Health Unit	63.6	63.6	63.6	50.0	57.1	50.0	33.3
Ottawa Public Health	94.1	95.0	94.4	94.9	95.4	94.9	94.8
Peel Public Health	84.6	83.4	81.6	80.6	80.0	78.4	76.7
Peterborough Public Health	97.1	98.6	98.2	98.1	98.0	98.4	100.0
Porcupine Health Unit	89.7	88.6	88.9	89.3	89.0	87.9	88.7
Public Health Sudbury & Districts	90.5	95.0	89.5	88.2	87.5	90.0	83.3
Region of Waterloo Public Health and Emergency Services	85.7	86.7	87.5	86.7	85.3	84.7	82.0
Renfrew County and District Health Unit	100.0	100.0	100.0	100.0	100.0	100.0	100.0
Simcoe Muskoka District Health Unit	94.4	94.7	95.3	95.4	93.8	93.3	89.4
Southwestern Public Health	97.4	96.1	97.2	96.8	97.1	96.7	95.3
Thunder Bay District Health Unit	100.0	100.0	100.0	100.0	100.0	100.0	100.0
Timiskaming Health Unit	100.0	100.0	100.0	100.0	100.0	100.0	100.0

Public Health Unit Name	May 14 to May 20	May 15 to May 21	May 16 to May 22	May 17 to May 23	May 18 to May 24	May 19 to May 25	May 20 to May 26
Toronto Public Health	92.5	91.7	91.0	90.1	89.7	89.3	87.8
Wellington-Dufferin-Guelph Public Health	85.3	85.7	86.2	82.3	84.6	86.7	83.9
Windsor-Essex County Health Unit	87.3	85.9	86.6	86.6	86.9	87.3	92.4
York Region Public Health	95.0	95.3	95.5	94.8	94.5	93.8	92.4
TOTAL ONTARIO	90.8	90.2	89.5	88.9	88.5	88.0	86.6

Note: Data for calculating the number of cases tested for mutations common to VOCs or lineages using genomic analyses are obtained using information from the Laboratory object in CCM in addition to the data from the Investigation subtype field. Therefore, comparisons to counts using only information from the Investigation Subtype field may not align. The percent of cases due to a VOC may be higher than described in this report. Percent positivity is based on the sum of the daily cases that test positive divided by the number of cases that were tested for mutations common to VOCs or lineages (e.g. those identified as 'Detected' or 'Not Detected') during the date ranges specified in each column.

Data Source: CCM

Citation

Ontario Agency for Health Protection and Promotion (Public Health Ontario). Epidemiologic summary: COVID-19 in Ontario – January 15, 2020 to May 31, 2021. Toronto, ON: Queen’s Printer for Ontario; 2021.

Disclaimer

This document was developed by Public Health Ontario (PHO). PHO provides scientific and technical advice to Ontario’s government, public health organizations and health care providers. PHO’s work is guided by the current best available evidence at the time of publication. The application and use of this document is the responsibility of the user. PHO assumes no liability resulting from any such application or use. This document may be reproduced without permission for non-commercial purposes only and provided that appropriate credit is given to PHO. No changes and/or modifications may be made to this document without express written permission from PHO.

For Further Information

For more information, cd@oahpp.ca.

Public Health Ontario

Public Health Ontario is an agency of the Government of Ontario dedicated to protecting and promoting the health of all Ontarians and reducing inequities in health. Public Health Ontario links public health practitioners, front-line health workers and researchers to the best scientific intelligence and knowledge from around the world.

For more information about PHO, visit publichealthontario.ca.



©Queen’s Printer for Ontario, 2021