

## DAILY EPIDEMIOLOGICAL SUMMARY

# COVID-19 in Ontario: January 15, 2020 to June 18, 2021

This report includes the most current information available from CCM as of **June 18, 2021**.

Please visit the interactive [Ontario COVID-19 Data Tool](#) to explore recent COVID-19 data by public health unit, age group, sex, and trends over time.

A [weekly summary report](#) is available with additional information to complement the daily report.

This **daily** report provides an epidemiologic summary of recent COVID-19 activity in Ontario. The change in cases is determined by taking the cumulative difference between the current day and the previous day.

## Highlights

- There are a total of 541,880 confirmed cases of COVID-19 in Ontario reported to date.
- Compared to the previous day, this represents:
  - An increase of 355 confirmed cases (percent change of +2.9%)
  - An increase of 13 deaths (percent change of +1,200.0%)
  - An increase of 581 resolved cases (percent change of -6.9%)

In this document, the term 'change in cases' refers to cases publicly reported by the province for a given day. Data corrections or updates can result in case records being removed and or updated from past reports and may result in subset totals for updated case counts (i.e., age group, gender) differing from the overall updated case counts.

The term public health unit reported date in this document refers to the date local public health units were first notified of the case.

## Case Characteristics

**Table 1a. Summary of recent confirmed cases of COVID-19: Ontario**

	Change in cases June 17, 2021	Change in cases June 18, 2021	Percentage change June 18, 2021 compared to June 17, 2021	Cumulative case count as of June 18, 2021
Total number of cases	345	355	+2.9%	541,880
Number of deaths	1	13	+1,200.0%	9,007
Number resolved	624	581	-6.9%	529,002

**Note:** The number of cases publicly reported by the province each day may not align with case counts reported to public health on a given day; public health unit reported date refers to the date local public health was first notified of the case. Data corrections or updates can result in case records being removed and or updated from past reports.

**Data Source:** CCM

**Table 1b. Summary of recent confirmed cases of COVID-19 by age group and gender: Ontario**

	Change in cases June 17, 2021	Change in cases June 18, 2021	Cumulative case count as of June 18, 2021
Gender: Male	166	199	269,927
Gender: Female	164	165	268,096
Ages: 19 and under	65	86	86,979
Ages: 20-39	158	138	203,016
Ages: 40-59	72	79	154,773
Ages: 60-79	40	48	72,042
Ages: 80 and over	10	4	24,966

**Note:** Not all cases have a reported age or gender reported. Data corrections or updates can result in case records being removed and or updated from past reports and may result in subset totals (i.e., age group, gender) differing from past publicly reported case counts.

**Data Source:** CCM

**Table 2. Summary of recent confirmed cases of COVID-19 in school aged children by age group, August 30, 2020 to June 18, 2021: Ontario**

	Change in cases June 17, 2021	Change in cases June 18, 2021	Cumulative case count from August 30, 2020 to June 18, 2021
Ages: 4 to 8	13	21	16,031
Ages: 9 to 13	17	20	20,128
Ages: 14 to 17	21	15	20,518

**Note:** Includes all confirmed cases of COVID-19 for specified ages, regardless of school attendance. Data corrections or updates can result in case records being removed and or updated from past reports and may result in subset totals (i.e., age group) differing from past publicly reported case counts.

**Data Source:** CCM

**Table 3. Summary of recent confirmed cases of COVID-19 in long-term care homes: Ontario**

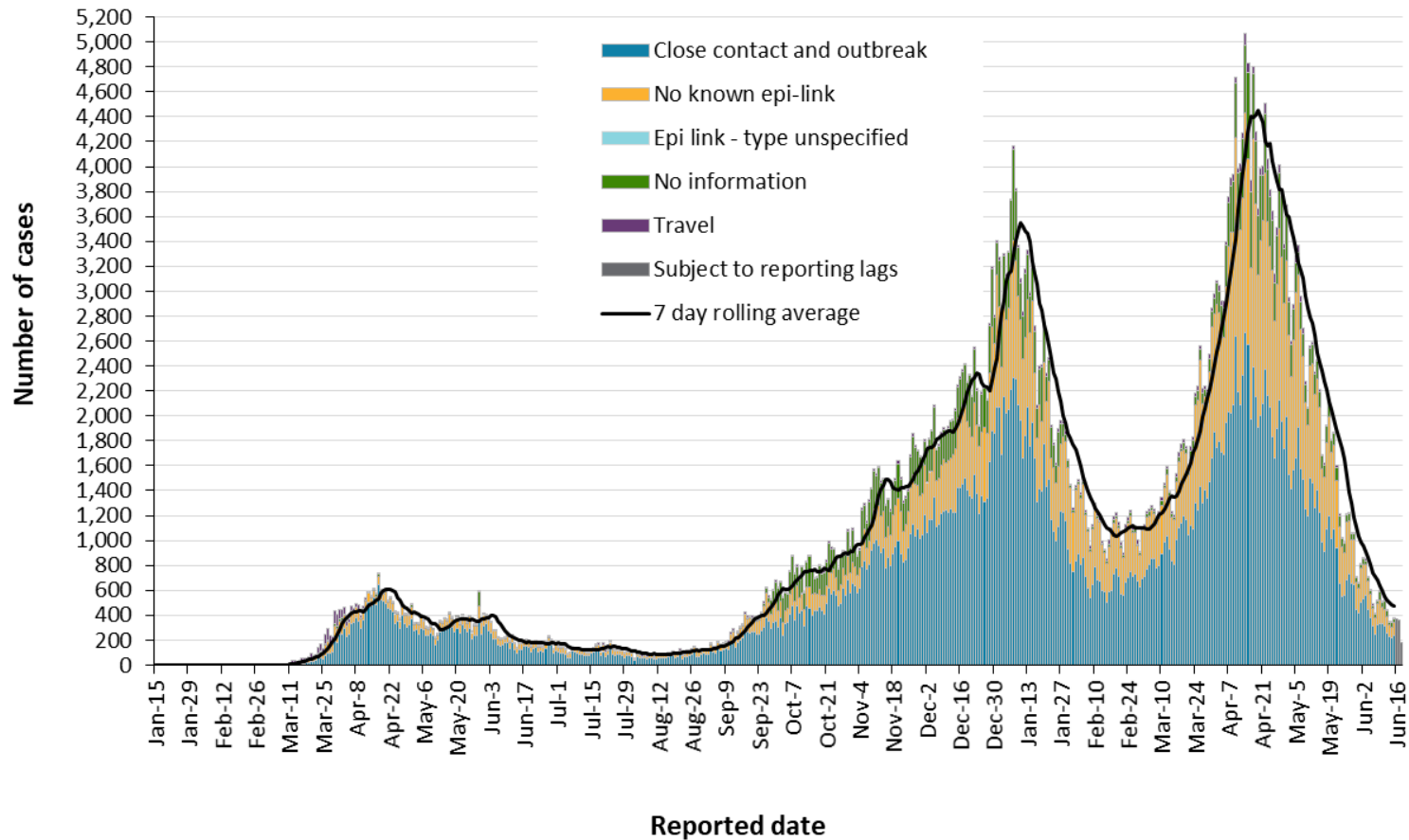
Long-term care home cases	Change in cases June 17, 2021	Change in cases June 18, 2021	Cumulative case count as of June 18, 2021
Residents	-1	1	15,336
Health care workers	2	0	7,135
Deaths among residents	0	0	3,965
Deaths among health care workers	0	0	10

**Note:** Information on how long-term care home residents and health care workers are identified is available in the [technical notes](#). Also, the change in cases in these categories may represent existing case records that have been updated.

**Data Source:** CCM

# Time

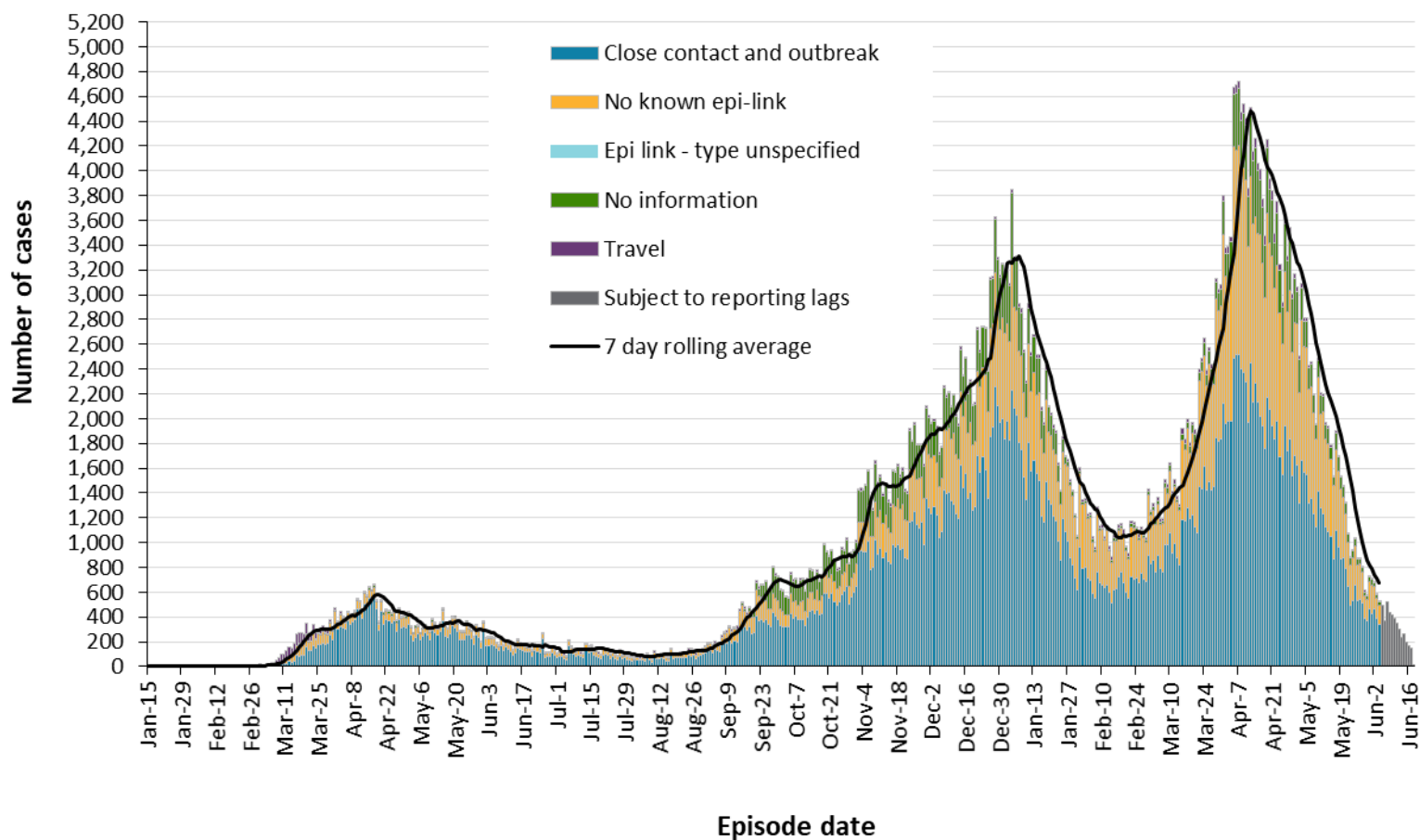
Figure 1. Confirmed cases of COVID-19 by likely acquisition and public health unit reported date: Ontario, January 15, 2020 to June 18, 2021



Data Source: CCM

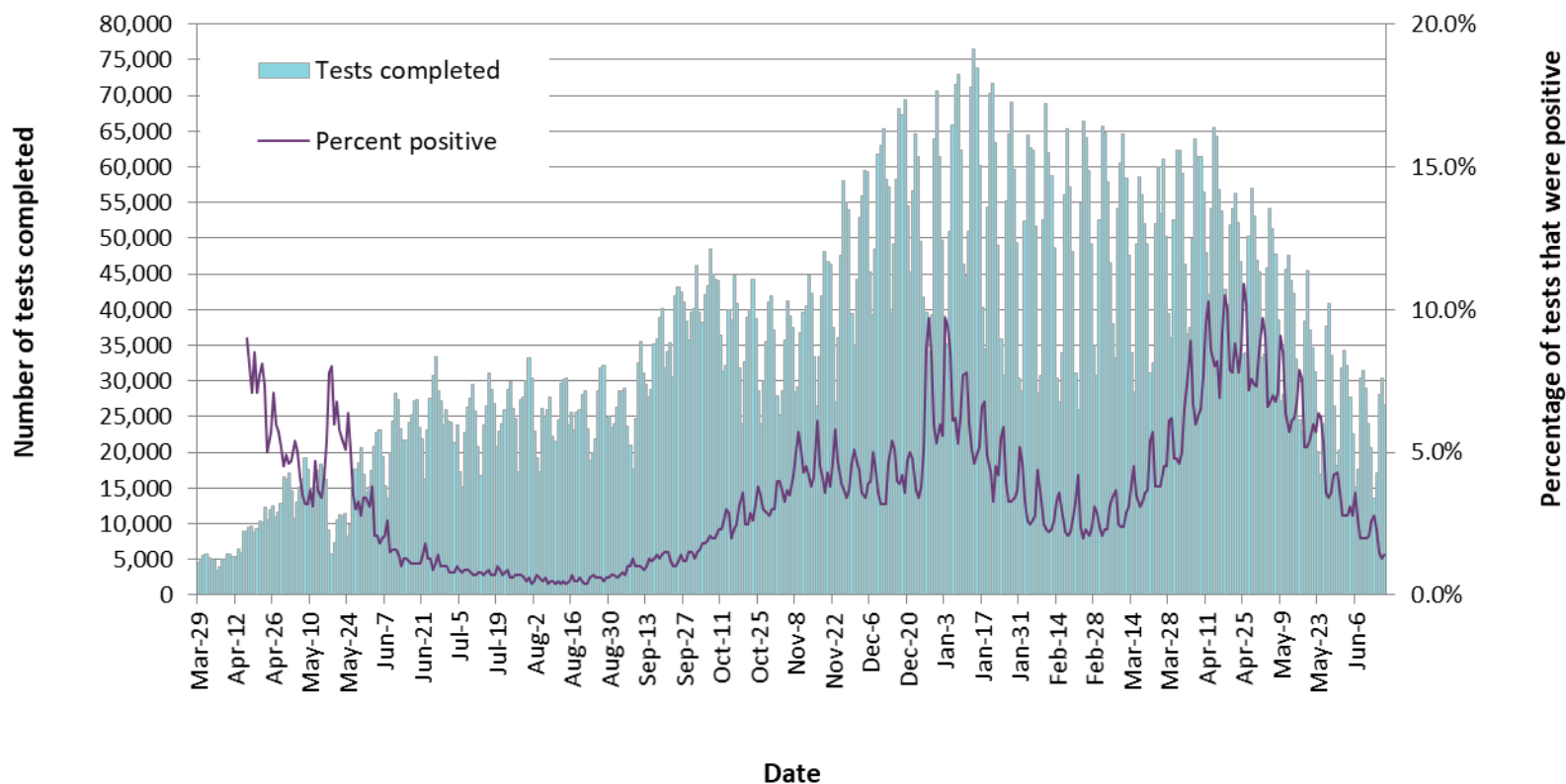
COVID-19 in Ontario: January 15, 2020 to June 18, 2021

**Figure 2. Confirmed cases of COVID-19 by likely acquisition and approximation of symptom onset date: Ontario, January 15, 2020 to June 18, 2021**



**Note:** Not all cases may have an episode date and those without one are not included in the figure. Episode date is defined and available in the [technical notes](#).  
**Data Source:** CCM

**Figure 3. Number of COVID-19 tests completed and percent positivity: Ontario, March 29, 2020 to June 17, 2021**

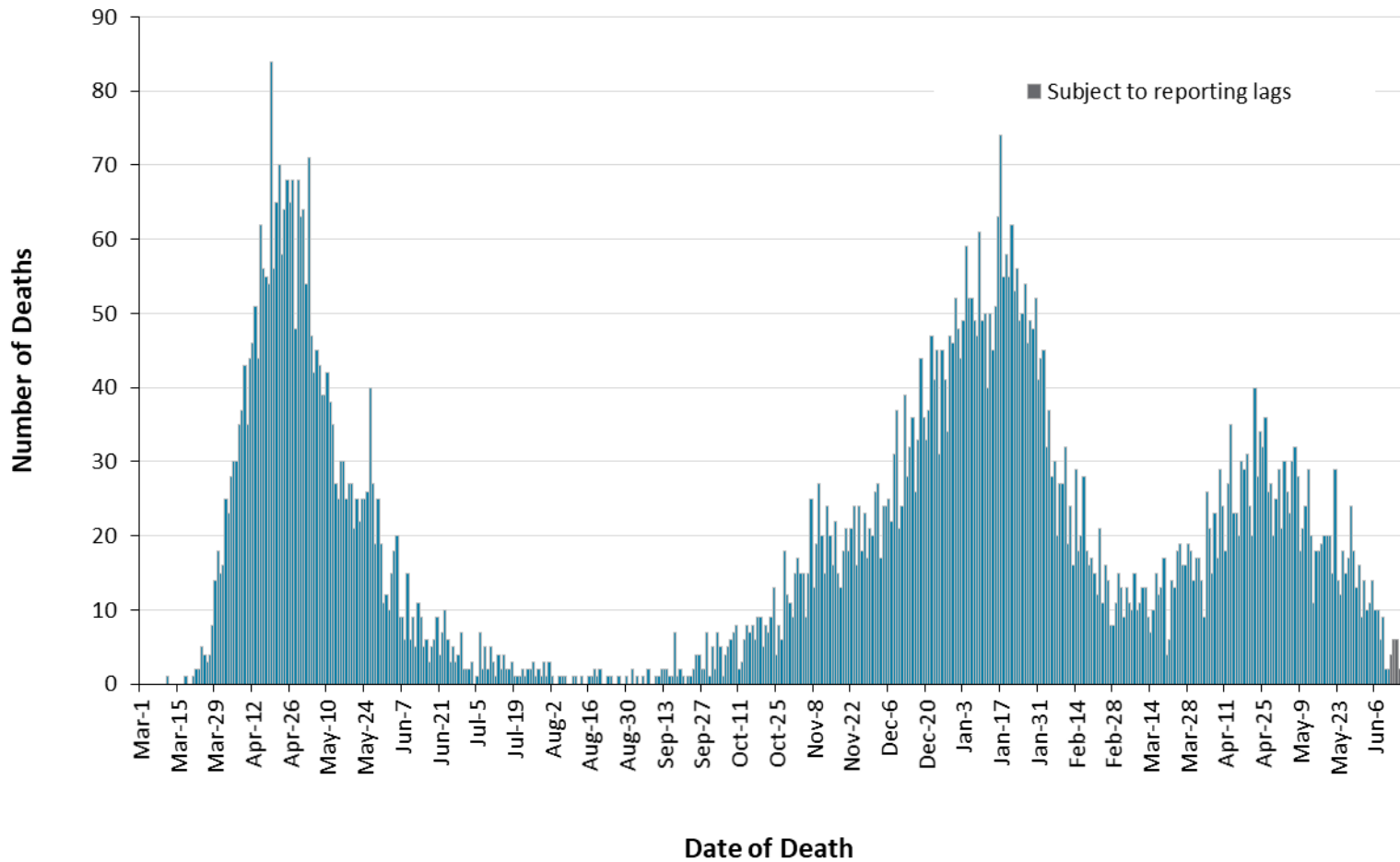


**Note:** The number of tests performed does not reflect the number of specimens or persons tested. More than one test may be performed per specimen or per person. As such, the percentage of tests that were positive does not necessarily translate to the number of specimens or persons testing positive.

**Data Source:** The Provincial COVID-19 Diagnostics Network, data reported by member microbiology laboratories.

# Severity

Figure 4. Confirmed deaths among COVID-19 cases by date of death: Ontario, March 1, 2020 to June 18, 2021



**Note:** Cases without a death date are not included in the figure.

**Data Source:** CCM



**Table 4. Confirmed cases of COVID-19 by severity: Ontario**

	Cumulative case count as of June 18, 2021	Percentage of all cases
Cumulative deaths reported (please note there may be a reporting delay for deaths)	9,007	1.7%
Deaths reported in ages: 19 and under	4	<0.1%
Deaths reported in ages: 20-39	78	<0.1%
Deaths reported in ages: 40-59	547	0.4%
Deaths reported in ages: 60-79	2,833	3.9%
Deaths reported in ages: 80 and over	5,544	22.2%
Ever in ICU	5,228	1.0%
Ever hospitalized	27,407	5.1%

**Note:** Not all cases have an age reported. Data corrections or updates can result in case records being removed and/or updated and may result in totals differing from past publicly reported case counts.

**Data Source:** CCM

## Geography

**Table 5. Summary of recent confirmed cases of COVID-19 by public health unit and region: Ontario**

Public Health Unit Name	Change in cases June 17, 2021	Change in cases June 18, 2021	Cumulative case count	Cumulative rate per 100,000 population
Northwestern Health Unit	1	2	1,078	1,229.5
Thunder Bay District Health Unit	1	1	3,329	2,219.9
<b>TOTAL NORTH WEST</b>	2	3	4,407	1,854.5
Algoma Public Health	-1	1	399	348.7
North Bay Parry Sound District Health Unit	8	14	521	401.5
Porcupine Health Unit	16	22	1,951	2,338.2
Public Health Sudbury & Districts	2	4	2,112	1,061.2
Timiskaming Health Unit	-1	0	207	633.2
<b>TOTAL NORTH EAST</b>	24	41	5,190	927.9
Ottawa Public Health	9	16	27,522	2,609.6
Eastern Ontario Health Unit	5	0	4,627	2,216.9
Hastings Prince Edward Public Health	0	0	1,128	669.5
Kingston, Frontenac and Lennox & Addington Public Health	1	0	1,536	722.1
Leeds, Grenville & Lanark District Health Unit	0	2	1,746	1,008.3
Renfrew County and District Health Unit	0	0	738	679.4
<b>TOTAL EASTERN</b>	15	18	37,297	1,936.1

Public Health Unit Name	Change in cases June 17, 2021	Change in cases June 18, 2021	Cumulative case count	Cumulative rate per 100,000 population
Durham Region Health Department	12	16	25,114	3,525.3
Haliburton, Kawartha, Pine Ridge District Health Unit	2	2	2,145	1,135.3
Peel Public Health	50	45	109,148	6,796.5
Peterborough Public Health	4	-1	1,564	1,056.9
Simcoe Muskoka District Health Unit	7	5	12,318	2,054.4
York Region Public Health	22	18	52,461	4,279.7
<b>TOTAL CENTRAL EAST</b>	97	85	202,750	4,525.0
Toronto Public Health	50	58	164,341	5,266.7
<b>TOTAL TORONTO</b>	50	58	164,341	5,266.7
Chatham-Kent Public Health	1	0	1,874	1,762.7
Grey Bruce Health Unit	1	5	1,364	802.9
Huron Perth Public Health	2	3	1,908	1,365.2
Lambton Public Health	1	1	3,552	2,712.2
Middlesex-London Health Unit	3	5	12,504	2,463.7
Southwestern Public Health	4	4	3,853	1,821.8
Windsor-Essex County Health Unit	2	14	16,780	3,949.8
<b>TOTAL SOUTH WEST</b>	14	32	41,835	2,474.3
Brant County Health Unit	0	6	3,837	2,472.2
City of Hamilton Public Health Services	29	23	21,099	3,563.0

Public Health Unit Name	Change in cases June 17, 2021	Change in cases June 18, 2021	Cumulative case count	Cumulative rate per 100,000 population
Haldimand-Norfolk Health Unit	2	1	2,665	2,336.1
Halton Region Public Health	7	16	17,291	2,793.0
Niagara Region Public Health	13	9	16,111	3,409.8
Region of Waterloo Public Health and Emergency Services	85	54	16,944	2,899.6
Wellington-Dufferin-Guelph Public Health	7	9	8,113	2,601.1
<b>TOTAL CENTRAL WEST</b>	<b>143</b>	<b>118</b>	<b>86,060</b>	<b>3,020.4</b>
<b>TOTAL ONTARIO</b>	<b>345</b>	<b>355</b>	<b>541,880</b>	<b>3,645.5</b>

**Notes:** Health units with data corrections or updates could result in records being removed from totals, leading to negative or zero counts.

**Data Source:** CCM

## Outbreaks

**Table 6. Summary of recent confirmed COVID-19 outbreaks reported in long-term care homes, retirement homes and hospitals by status: Ontario**

Institution type	Change in outbreaks June 17, 2021	Change in outbreaks June 18, 2021	Number of ongoing outbreaks	Cumulative number of outbreaks reported
Long-term care homes	1	0	9	1,481
Retirement homes	0	0	3	873
Hospitals	1	0	5	569

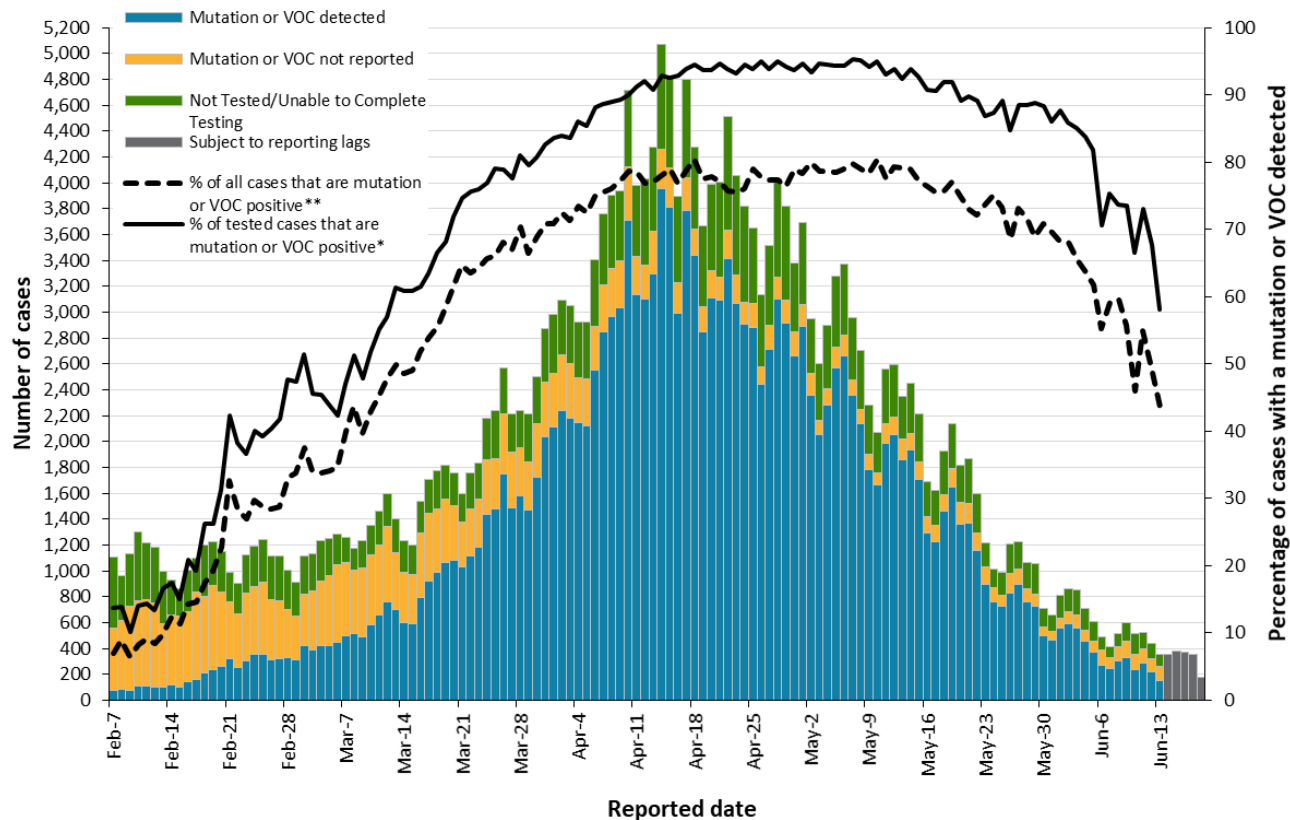
**Note:** Ongoing outbreaks include all outbreaks that are 'Open' in CCM without a 'Declared Over Date' recorded, or where the outbreak started more than five months ago, even for outbreaks where the Outbreak Status value selected in CCM is 'OPEN'. The start of the outbreak is determined by the onset date of first case, or if missing the outbreak reported date, or else if that is also missing, then the outbreak created date.

**Data Source:** CCM

## Variant COVID-19 Cases

The laboratory detection of a variant of concern (VOC) is a multi-step process. Samples that test positive for SARS-CoV-2 and have a cycle threshold (Ct) value  $\leq 35$  can be tested for mutations common to variants of concern. If positive for the mutation of interest with a Ct value of  $\leq 30$ , these samples may then undergo genomic analyses to identify the VOC lineage. VOC lineages may still be confirmed using genomic analysis despite specific S gene mutation(s) being documented as 'unable to complete' due to poor sequence quality at the genome position. For more information about whole genome sequencing, please see the [SARS CoV-2 Whole Genome Sequencing in Ontario report](#).

**Figure 5. Number of confirmed COVID-19 cases and percent positive for mutations or VOCs: Ontario, February 7, 2021 to June 18, 2021**



**Note:** Data used to calculate the number of cases tested for mutations common to VOCs or lineages using genomic analyses are obtained using information from the Laboratory object in CCM in addition to the data from the Investigation Subtype field. Therefore, comparisons to counts using only information from the Investigation Subtype field may not align. The percent of cases due to a VOC may be higher than described in this report.

\*The denominator includes only confirmed COVID-19 cases that were able to be tested for VOCs (e.g. those identified as 'Detected' or 'Not Detected'). Mutations tested for routinely are the N501Y and E484K mutations. Mutations common to the B.1.617.2 lineage are not included in the current VOC mutation test. However, cases identified as B.1.617.2 after whole genome sequencing is completed are included in the VOC detected category.

\*\*The denominator includes all confirmed COVID-19 cases, including those that were unable to be tested for VOCs (e.g. those identified as 'Detected', 'Not Detected' and 'Not Tested/Unable to Complete Testing').

**Data Source:** CCM

**Table 7. Summary of confirmed COVID-19 cases with a mutation or VOC detected: Ontario**

	Change in cases June 17, 2021	Change in cases June 18, 2021	Cumulative case count up to June 18, 2021
Variant of Concern			
Lineage B.1.1.7*	228	286	141,986
Lineage B.1.351	2	8	1,154
Lineage P.1	13	29	4,229
Lineage B.1.617.2**	71	74	731
Mutations			
N501Y and E484K	-15	-21	5,106
N501Y (E484K unknown)***	-41	-8	14,479
E484K (N501Y negative)	15	21	5,774
E484K (N501Y unknown)	0	-16	461
Mutation not detected†	218	383	9,032

**Note:** Interpret the VOC and mutation trends with caution due to the varying time required to complete VOC testing and/or genomic analysis following the initial positive test for SARS-CoV-2. Due to the nature of the genomic analysis, test results may be completed in batches. Data corrections or updates can result in case records being removed and/or updated and may result in totals differing from past publicly reported case counts. Data for calculating the change in cases and the cumulative case counts uses data from the Investigation Subtype field only. Changes to the VOC testing algorithm may impact counts and trends. Further details can be found in the [data caveats](#) section.

\*Includes all confirmed COVID-19 cases where lineage B.1.1.7 was identified by genomic analysis and those presumed to be B.1.1.7 based on positive N501Y and negative E484K mutation in the Investigation Subtype field

\*\*Includes B.1.617.2 cases identified by genomic analysis. Mutations common to B.1.617.2 are not included in the current VOC mutation test.

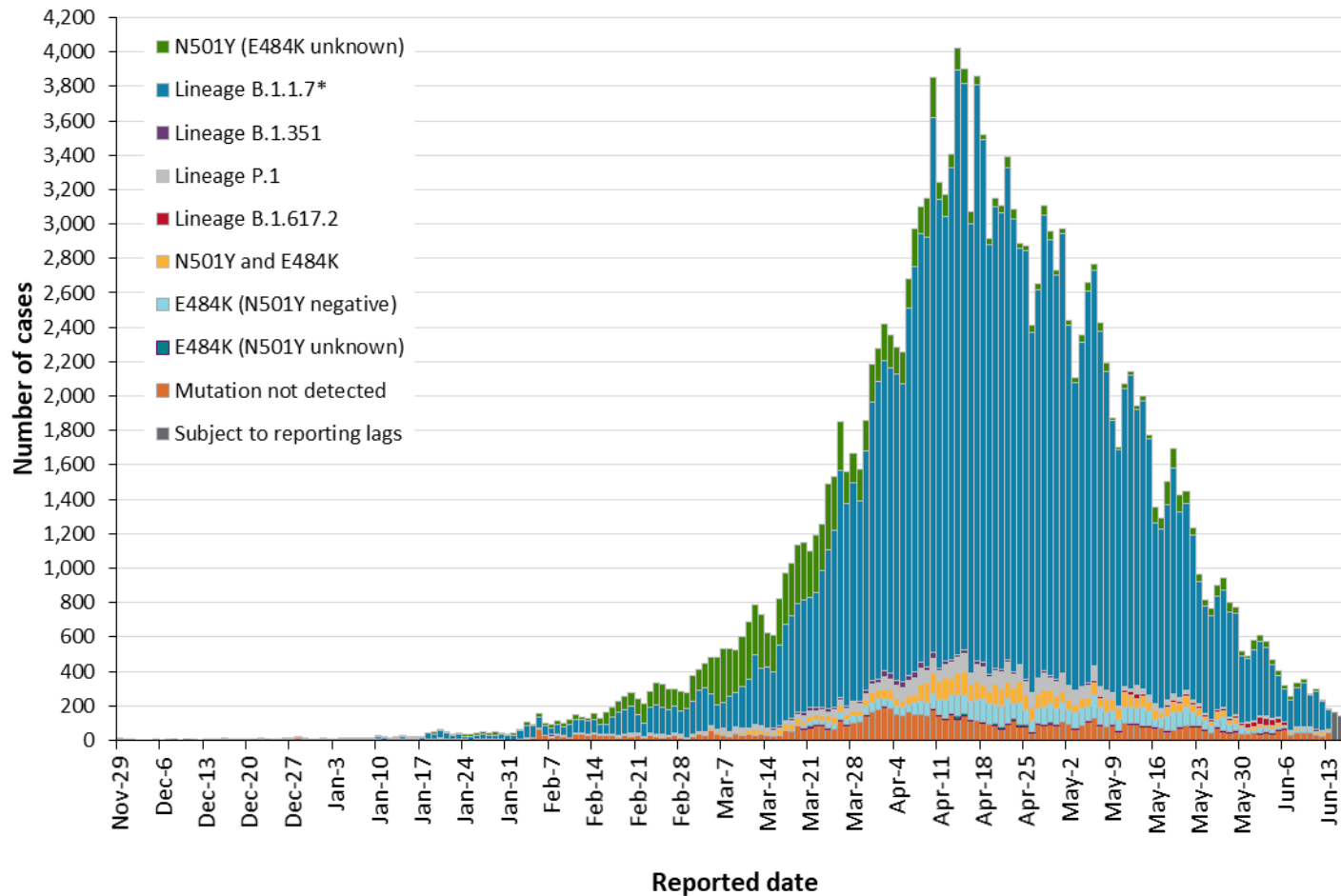
\*\*\*The category 'N501Y (E484K unknown)' mainly consists of results from before the introduction of the E484K test. Counts will shift from this category into a VOC lineage category as E484K tests or genomic analysis are completed.

†Includes cases identified as 'Mutation not detected' in the Investigation Subtype field only.

**Data Source:** CCM



**Figure 6. Confirmed COVID-19 cases with a mutation or VOC detected by public health unit reported date: Ontario, November 29, 2020 to June 18, 2021**



**Note:** Reported date is based on the date the case was reported, not the date that the VOC or mutation was identified. Further details on testing for variants of concern can be found in the [technical notes](#). Interpret the VOC and mutation trends with caution due to the varying time required to complete testing and/or genomic analysis following the initial positive test for SARS-CoV-2. Data for calculating the change in cases and the cumulative case count uses data from the Investigation

Subtype field only. Data for cases with a B.1.1.7, B.1.351, P.1 and B.1.617.2 lineage detected or any of the mutations listed above are determined using the Investigation Subtype field only. Changes to the VOC testing algorithm may impact counts and trends. Further details can be found in the [data caveats](#) section.

\*Includes all confirmed COVID-19 cases where lineage B.1.1.7 was identified by genomic analysis and those presumed to be B.1.1.7 based on positive N501Y and negative E484K mutation. As of March 22, 2021, positive specimens with a Ct  $\leq$  35 are tested for both the N501Y and E484K mutation, with all E484K positive specimens with a Ct  $\leq$  30 forwarded for further genomic analysis. If found to be positive for the N501Y mutation only, no further genomic analysis are performed as these are presumed to be B.1.1.7. As of May 26, 2021, cases where an E484K mutation is detected will no longer be reflexed for sequencing as VOC testing labs switched to a representative sampling method where only a proportion of all positives with a Ct  $\leq$  30 are forwarded for further genomic analysis.

**Data Source:** CCM

# Technical Notes

## Data Sources

- The data for this report were based on information successfully extracted from the Public Health Case and Contact Management Solution (CCM) for all PHUs by PHO as of **June 18, 2021 at 1 p.m.** for cases reported from February 1, 2021 onwards and as of **June 14, 2021 at 9 a.m.** for cases reported up to January 31, 2021.
- VOC data for this report were based on information successfully extracted from CCM for all PHUs by PHO as of **June 18, 2021 at 1 p.m.** for cases reported from April 1, 2021 onwards and as of **June 14, 2021 at 9 a.m.** for cases reported up to March 31, 2021.
- CCM is a dynamic disease reporting system, which allows ongoing updates to data previously entered. As a result, data extracted from CCM represent a snapshot at the time of extraction and may differ from previous or subsequent reports.
- Ontario population projection data for 2020 were sourced from Ministry, IntelliHEALTH Ontario. Data were extracted on November 26, 2019.
- COVID-19 test data were based on information from The Provincial COVID-19 Diagnostics Network, reported by member microbiology laboratories.

## Data Caveats

- The data only represent cases reported to public health units and recorded in CCM. As a result, all counts will be subject to varying degrees of underreporting due to a variety of factors, such as disease awareness and medical care seeking behaviours, which may depend on severity of illness, clinical practice, changes in laboratory testing, and reporting behaviours.
- Lags in CCM data entry due to weekend staffing may result in lower case counts than would otherwise be recorded.
- Only cases meeting the confirmed case classification as listed in the [MOH Case Definition – Coronavirus Disease \(COVID-19\) document](#) are included in the report counts from CCM
- Cases of confirmed reinfection, as defined in the provincial case definitions, are counted as unique investigations.
- Case classification information may be updated for individuals with a positive result issued from a point-of-care assays.
- The number of tests performed does not reflect the number of specimens or persons tested. More than one test may be performed per specimen or per person. As such, the percentage of tests that were positive does not necessarily translate to the number of specimens or persons testing positive.
- Reported date is the date the case was reported to the public health unit.

- Case episode date represents an estimate of disease onset. This date is calculated based on the earliest date of symptom onset, specimen collection/test date, or the date reported to the public health unit.
- Resolved cases are determined only for COVID-19 cases that have not died. Cases that have died are considered fatal and not resolved. The following cases are classified as resolved:
  - Cases that are reported as ‘recovered’ in CCM
  - Cases that are not hospitalized and are 14 days past their episode date
  - Cases that are currently hospitalized (no hospital end date entered) and have a status of ‘closed’ in CCM (indicating public health unit follow-up is complete) and are 14 days past their symptom onset date or specimen collection date
- Hospitalization includes all cases for which a hospital admission date was reported or hospitalization/ICU was reported as ‘Yes’ at the time of data extraction. It includes cases that have been discharged from hospital as well as cases that are currently hospitalized. Emergency room visits are not included in the number of reported hospitalizations.
- ICU admission includes all cases for which an ICU admission date was reported at the time of data extraction. It is a subset of the count of hospitalized cases. It includes cases that have been treated or that are currently being treated in an ICU.
- Orientation of case counts by geography is based on the diagnosing health unit (DHU). DHU refers to the case’s public health unit of residence at the time of illness onset and not necessarily the location of exposure. Cases for which the DHU was reported as MOH-PHO (to signify a case that is not a resident of Ontario) have been excluded from the analyses.
- Likely source of acquisition is determined by examining the epidemiologic link and epidemiologic link status fields in CCM. If no epidemiologic link is identified in those fields the risk factor fields are examined to determine whether a case travelled, was associated with a confirmed outbreak, was a contact of a case, had no known epidemiological link (sporadic community transmission) or was reported to have an unknown source/no information was reported. Some cases may have no information reported if the case is untraceable, was lost to follow-up or referred to FNIHB. Cases with multiple risk factors were assigned to a single likely acquisition source group which was determined hierarchically in the following order:
  - For cases with an episode date *on or after* April 1, 2020: Outbreak-associated > close contact of a confirmed case > travel > no known epidemiological link > information missing or unknown
  - For cases with an episode date *before* April 1, 2020: Travel > outbreak-associated > close contact of a confirmed case > no known epidemiological link > information missing or unknown
- Deaths are determined by using the outcome field in CCM. Any case marked ‘Fatal’ is included in the deaths data. The CCM field Type of Death is not used to further categorize the data.
  - The date of death is determined using the outcome date field for cases marked as ‘Fatal’ in the outcome field.

- COVID-19 cases from CCM for which the Classification and/or Disposition was reported as ENTERED IN ERROR, DOES NOT MEET DEFINITION, IGNORE, DUPLICATE or any variation on these values have been excluded. The provincial case count for COVID-19 may include some duplicate records, if these records were not identified and resolved.
- Ongoing outbreaks include all outbreaks that are 'Open' in CCM without a 'Declared Over Date' recorded, or where the outbreak started more than five months ago, even for outbreaks where the Outbreak Status value selected in CCM is 'OPEN'. The start of the outbreak is determined by the onset date of first case, or if missing the outbreak reported date, or else if that is also missing, then the outbreak created date.
- 'Long-term care home residents' includes cases that reported 'Yes' to the risk factor 'Resident of a long-term care home'; or 'Yes' to the risk factor 'Resident of nursing home or other chronic care facility' and reported to be part of an outbreak assigned as a long-term care home (via the Outbreak number or case comments field); or were reported to be part of an outbreak assigned as a long-term care home (via the outbreak number or case comments field) with an age over 70 years and did not report 'No' to the risk factors 'Resident of long-term care home' or 'Resident of nursing home or other chronic care facility'. 'Long-term care home residents' excludes cases that reported 'Yes' to any of the health care worker occupational risk factors.
- The 'health care workers' variable includes cases that reported 'Yes' to any of the occupation of health care worker, doctor, nurse, dentist, dental hygienist, midwife, other medical technicians, personal support worker, respiratory therapist, first responder.
- 'Health care workers associated with long-term care outbreaks' includes 'health care workers' reported to be part of an outbreak assigned as a long-term care home (via the outbreak number or case comments field). Excludes cases that reported 'Yes' to risk factors 'Resident of long-term care home' or 'Resident of nursing home or other chronic care facility' and 'Yes' to the calculated 'health care workers' variable.
- Percent change is calculated by taking the difference between the current period (i.e., daily count or sum of the daily count over a 7-day period) and previous period (i.e., daily count or sum of the daily count over a 7-day period), divided by the previous period.
- Public Health Ontario conducts testing and genomic analyses for SARS-CoV-2 positive specimens using the criteria outlined here: <https://www.publichealthontario.ca/en/laboratory-services/test-information-index/covid-19-voc>
- Lineage nomenclature is dynamic. PANGO lineage naming and assignment may change as more samples are sequenced and analyzed.
- Variant status may be updated based on scientific evidence. Variants designated as a VOC in Canada is available on the [Public Health Agency of Canada's SARS-CoV-2 Variants webpage](#).
- Changes to the VOC testing algorithm may occur over time and trends should be interpreted with caution. Since February 3, 2021 all PCR positive SARS-CoV-2 specimens with Ct values  $\leq 35$  are tested for a N501Y mutation. As of March 22, 2021, positive specimens with a Ct  $\leq 35$  are tested for both the N501Y and E484K mutation, with all E484K positive specimens with a Ct  $\leq 30$  forwarded for further genomic analysis. If found to be positive for the N501Y mutation only, no further genomic analysis are performed as these are presumed to be B.1.1.7. As of May 26, 2021, cases where a E484K mutation is detected will no longer be reflexed for sequencing as

VOC testing labs switched to a representative sampling method where only a proportion of all positives with a Ct  $\leq$  30 are forwarded for further genomic analysis.

- The laboratory detection of a variant of concern is a multi-step process. Samples that test positive for SARS-CoV-2 and have a cycle threshold (Ct) value  $\leq$  35 can be tested for mutations common to variants of concern. If positive for the mutation of interest with a Ct value of  $\leq$ 30, these samples may then undergo genomic analyses to identify the VOC lineage. VOC lineages may still be confirmed using genomic analysis despite specific S gene mutation(s) being documented as 'unable to complete' due to poor sequence quality at the genome position.
- VOC testing data are analyzed for cases with a reported date on or after February 07, 2021. VOC testing data are based on CCM information reported within the laboratory object for select Logical Observation Identifiers Names and Codes (LOINC) and supplemented with information from the Investigation Subtype field. A confirmed Case Investigation is assigned a VOC test value (e.g., VOC test detected, VOC test not detected) based on the following hierarchy:
  - If multiple laboratory results are identified, a VOC test value is assigned based on the following hierarchy: Detected > Not Detected > Unable to complete
  - If a laboratory result is 'Not Detected' or 'Unable to complete', but data on the Investigation Subtype field is listed as a lineage or mutation common to a VOC, then the VOC test value is set to 'Detected'
- If a VOC is identified through genomic analysis cases initially classified as a mutation may be updated and moved to the appropriate lineage (B.1.1.7, B.1.351 and P.1)
- LOINCs are a set of internationally used result description codes. In the absence of a standard LOINC, Ontario Health can create local result codes, which are identified with an 'XON' prefix. LOINCs incorporate details of the result value (e.g. test method, target detected - such as IgG, DNA, isolate etc.) and are unique to each result.
- VOC testing data in this report are assigned on a per case basis. Multiple laboratory results may be associated to a single case investigation, but for analysis purposes are only counted once.
  - The percent of cases that test VOC positive is calculated by taking the number of VOC test positive, divided by the total number of confirmed COVID-19 cases for a given reported date.
- The VOC percent positive may be higher than described in this report. As testing algorithms change, the VOC percent positivity may not be reflective of the exact number of COVID-19 cases due to VOCs
- Only CCM case investigations with a CONFIRMED classification have their laboratory records with VOC testing information included in the percent positivity calculations

## Appendix A

**Table A1. Weekly rates of confirmed COVID-19 cases per 100,000 population over recent rolling 7-day periods, by reported date and public health unit: Ontario, June 3 to June 15, 2021**

Public Health Unit Name	June 3 to June 9	June 4 to June 10	June 5 to June 11	June 6 to June 12	June 7 to June 13	June 8 to June 14	June 9 to June 15	% change from June 3 – June 9 to June 9 - June 15
<b>NORTH WEST</b>								
Northwestern Health Unit	4.6	5.7	6.8	6.8	6.8	8.0	9.1	+97.8%
Thunder Bay District Health Unit	26.0	20.0	15.3	17.3	15.3	16.7	16.7	-35.8%
<b>NORTH EAST</b>								
Algoma Public Health	2.6	1.7	2.6	2.6	2.6	2.6	0.9	-65.4%
North Bay Parry Sound District Health Unit	13.1	17.0	19.3	21.6	21.6	28.5	30.1	+129.8%
Porcupine Health Unit	294.8	260.1	310.4	321.2	294.8	270.9	273.2	-7.3%
Public Health Sudbury & Districts	5.0	5.5	8.0	6.5	6.0	7.0	7.0	+40.0%
Timiskaming Health Unit	6.1	6.1	6.1	3.1	3.1	3.1	3.1	-49.2%
<b>EASTERN</b>								
Ottawa Public Health	21.9	19.3	18.6	17.7	17.4	17.9	17.3	-21.0%
Eastern Ontario Health Unit	2.9	2.9	3.8	3.8	3.8	4.3	3.8	+31.0%
Hastings Prince Edward Public Health	1.2	1.2	1.8	3.0	3.0	3.0	3.6	+200.0%
Kingston, Frontenac and Lennox & Addington Public Health	2.4	0.9	1.4	1.4	1.4	0.9	0.9	-62.5%

Public Health Unit Name	June 3 to June 9	June 4 to June 10	June 5 to June 11	June 6 to June 12	June 7 to June 13	June 8 to June 14	June 9 to June 15	% change from June 3 – June 9 to June 9 - June 15
Leeds, Grenville & Lanark District Health Unit	3.5	3.5	2.9	4.0	4.6	5.2	4.6	+31.4%
Renfrew County and District Health Unit	8.3	9.2	9.2	8.3	8.3	5.5	7.4	-10.8%
<b>CENTRAL EAST</b>								
Durham Region Health Department	28.2	28.8	26.8	25.3	22.2	22.3	22.0	-22.0%
Haliburton, Kawartha, Pine Ridge District Health Unit	16.4	15.9	13.2	10.1	10.1	9.0	11.1	-32.3%
Peel Public Health	48.5	42.7	39.0	35.7	33.1	32.2	28.6	-41.0%
Peterborough Public Health	16.2	16.9	16.2	15.5	16.9	19.6	20.3	+25.3%
Simcoe Muskoka District Health Unit	20.3	19.0	18.0	16.3	16.0	15.0	12.0	-40.9%
York Region Public Health	20.5	19.7	17.1	14.3	13.5	12.8	11.5	-43.9%
<b>TORONTO</b>								
Toronto Public Health	27.7	24.6	22.4	21.2	20.1	19.4	18.3	-33.9%
<b>SOUTH WEST</b>								
Chatham-Kent Public Health	8.5	5.6	3.8	2.8	2.8	1.9	2.8	-67.1%
Grey Bruce Health Unit	15.3	10.6	13.0	13.5	17.1	18.2	22.4	+46.4%
Huron Perth Public Health	13.6	16.5	16.5	17.9	19.3	17.9	19.3	+41.9%
Lambton Public Health	26.0	16.0	17.6	13.7	13.0	16.0	15.3	-41.2%
Middlesex-London Health Unit	21.3	17.9	16.2	15.6	17.3	18.9	18.9	-11.3%



Public Health Unit Name	June 3 to June 9	June 4 to June 10	June 5 to June 11	June 6 to June 12	June 7 to June 13	June 8 to June 14	June 9 to June 15	% change from June 3 – June 9 to June 9 - June 15
Southwestern Public Health	8.0	8.5	7.6	7.6	9.9	11.8	11.8	+47.5%
Windsor-Essex County Health Unit	24.2	22.4	20.7	16.9	16.0	16.2	13.7	-43.4%
<b>CENTRAL WEST</b>								
Brant County Health Unit	34.8	35.4	32.2	27.7	25.8	25.1	27.1	-22.1%
City of Hamilton Public Health Services	40.5	34.6	32.8	27.0	26.9	24.8	23.3	-42.5%
Haldimand-Norfolk Health Unit	20.2	17.5	17.5	17.5	14.0	15.8	14.0	-30.7%
Halton Region Public Health	25.0	23.3	22.3	20.5	19.5	19.4	17.4	-30.4%
Niagara Region Public Health	33.2	34.3	30.5	29.8	27.7	24.3	23.5	-29.2%
Region of Waterloo Public Health and Emergency Services	57.2	59.4	63.7	72.6	73.6	75.0	77.5	+35.5%
Wellington-Dufferin-Guelph Public Health	18.0	16.4	12.5	13.8	13.5	10.6	10.9	-39.4%
<b>TOTAL ONTARIO</b>	<b>28.2</b>	<b>25.9</b>	<b>24.6</b>	<b>23.5</b>	<b>22.5</b>	<b>22.1</b>	<b>21.2</b>	<b>-24.8%</b>

**Note:** Rates are based on the sum of the daily case counts during the date ranges specified in each column.

**Data Source:** CCM

**Table A2. Summary of confirmed COVID-19 cases with a mutation or VOC by public health unit: Ontario as of June 18, 2021**

Public Health Unit Name	Cumulative count for Lineage B.1.1.7*	Cumulative count for Lineage B.1.351	Cumulative count for Lineage P.1	Cumulative count for Lineage B.1.617.2	Cumulative count for mutations**
Algoma Public Health	67	0	12	2	28
Brant County Health Unit	662	2	83	2	497
Chatham-Kent Public Health	107	5	14	0	115
City of Hamilton Public Health Services	4,910	61	100	22	2,086
Durham Region Health Department	9,461	49	189	17	1,277
Eastern Ontario Health Unit	646	41	17	1	276
Grey Bruce Health Unit	301	0	5	1	55
Haldimand-Norfolk Health Unit	366	3	21	6	399
Haliburton, Kawartha, Pine Ridge District Health Unit	439	0	17	2	314
Halton Region Public Health	5,063	23	141	33	623
Hastings Prince Edward Public Health	73	0	7	0	411
Huron Perth Public Health	156	0	5	6	145
Kingston, Frontenac and Lennox & Addington Public Health	433	2	35	0	127
Lambton Public Health	411	0	17	4	134
Leeds, Grenville & Lanark District Health Unit	289	18	0	0	42
Middlesex-London Health Unit	3,326	2	82	2	196

Public Health Unit Name	Cumulative count for Lineage B.1.1.7*	Cumulative count for Lineage B.1.351	Cumulative count for Lineage P.1	Cumulative count for Lineage B.1.617.2	Cumulative count for mutations**
Niagara Region Public Health	4,210	3	12	3	1,085
North Bay Parry Sound District Health Unit	164	28	2	2	13
Northwestern Health Unit	54	0	1	0	16
Ottawa Public Health	6,549	326	30	5	532
Peel Public Health	30,022	132	1,371	256	3,658
Peterborough Public Health	562	4	7	2	161
Porcupine Health Unit	983	2	0	24	8
Public Health Sudbury & Districts	584	9	5	1	343
Region of Waterloo Public Health and Emergency Services	3,065	11	60	74	296
Renfrew County and District Health Unit	222	6	4	1	14
Simcoe Muskoka District Health Unit	3,826	26	158	16	834
Southwestern Public Health	636	2	11	1	176
Thunder Bay District Health Unit	101	0	2	2	71
Timiskaming Health Unit	82	1	0	0	0
Toronto Public Health	44,527	315	1,305	192	8,848
Wellington-Dufferin-Guelph Public Health	2,066	1	60	21	194
Windsor-Essex County Health Unit	1,794	5	13	1	135
York Region Public Health	15,829	77	443	32	2,711

Public Health Unit Name	Cumulative count for Lineage B.1.1.7*	Cumulative count for Lineage B.1.351	Cumulative count for Lineage P.1	Cumulative count for Lineage B.1.617.2	Cumulative count for mutations**
<b>TOTAL ONTARIO</b>	<b>141,986</b>	<b>1,154</b>	<b>4,229</b>	<b>731</b>	<b>25,820</b>

**Note:** Interpret the VOC and mutation trends with caution due to the varying time required to complete VOC testing and/or genomic analysis following the initial positive test for SARS-CoV-2. Due to the nature of the genomic analysis, test results may be completed in batches. Data corrections or updates can result in case records being removed and/or updated and may result in totals differing from past publicly reported case counts. Data for calculating the change in cases and the cumulative case count uses data from the Investigation Subtype field only. Changes to the VOC testing algorithm may impact counts and trends. Further details can be found in the [data caveats](#) section.

\*Includes all confirmed COVID-19 cases where lineage B.1.1.7 was identified by genomic analysis and those presumed to be B.1.1.7 based on positive N501Y and negative E484K mutation.

\*\*Mutations includes all confirmed COVID-19 cases with the following mutations detected, reported from the Investigation Subtype field: N501Y and E484K, N501Y (E484K unknown), E484K (N501Y negative), E484K (N501Y unknown).

If a VOC is identified through genomic analysis, the change in cases and/or cumulative case counts for mutations will fluctuate as the case is moved to one of the listed lineages.

**Data Source:** CCM

**Table A3. Weekly percent positivity for cases positive for mutations or VOCs over recent rolling 7-day periods using all confirmed cases as the denominator, by reported date and public health unit: Ontario, June 1 to June 13, 2021**

Public Health Unit Name	June 1 to June 7	June 2 to June 8	June 3 to June 9	June 4 to June 10	June 5 to June 11	June 6 to June 12	June 7 to June 13
Algoma Public Health	50.0	100.0	100.0	100.0	100.0	100.0	100.0
Brant County Health Unit	76.1	76.7	74.1	69.1	60.0	62.8	65.0
Chatham-Kent Public Health	80.0	81.8	77.8	83.3	75.0	66.7	66.7
City of Hamilton Public Health Services	68.2	71.8	66.7	58.5	55.2	53.1	50.3
Durham Region Health Department	77.4	76.5	73.6	70.2	71.7	73.3	73.4
Eastern Ontario Health Unit	33.3	50.0	50.0	50.0	87.5	100.0	100.0
Grey Bruce Health Unit	16.7	5.6	7.7	5.6	4.5	4.3	3.4
Haldimand-Norfolk Health Unit	86.4	88.0	95.7	100.0	100.0	90.0	87.5
Haliburton, Kawartha, Pine Ridge District Health Unit	43.2	38.5	35.5	33.3	24.0	26.3	31.6
Halton Region Public Health	52.3	49.0	49.0	43.1	45.7	42.5	41.3
Hastings Prince Edward Public Health	0.0	0.0	50.0	50.0	33.3	60.0	60.0
Huron Perth Public Health	52.2	43.8	52.6	47.8	39.1	36.0	33.3
Kingston, Frontenac and Lennox & Addington Public Health	88.9	87.5	80.0	100.0	66.7	66.7	66.7
Lambton Public Health	58.3	66.7	58.8	57.1	56.5	50.0	47.1

Public Health Unit Name	June 1 to June 7	June 2 to June 8	June 3 to June 9	June 4 to June 10	June 5 to June 11	June 6 to June 12	June 7 to June 13
Leeds, Grenville & Lanark District Health Unit	0.0	0.0	16.7	16.7	20.0	14.3	25.0
Middlesex-London Health Unit	67.7	68.8	72.2	79.1	76.8	81.0	81.8
Niagara Region Public Health	67.6	65.7	61.1	63.0	63.9	63.1	62.6
North Bay Parry Sound District Health Unit	50.0	100.0	94.1	86.4	80.0	82.1	82.1
Northwestern Health Unit	50.0	50.0	25.0	20.0	16.7	16.7	16.7
Ottawa Public Health	43.0	42.5	43.7	42.6	45.4	47.6	42.9
Peel Public Health	63.4	62.3	61.4	59.3	57.7	54.5	54.7
Peterborough Public Health	92.6	92.0	91.7	96.0	91.7	87.0	72.0
Porcupine Health Unit	56.0	56.5	55.7	46.5	54.1	53.7	55.3
Public Health Sudbury & Districts	64.3	58.3	60.0	54.5	50.0	46.2	41.7
Region of Waterloo Public Health and Emergency Services	50.7	42.9	33.8	27.4	22.6	17.9	13.3
Renfrew County and District Health Unit	60.0	55.6	66.7	60.0	60.0	66.7	77.8
Simcoe Muskoka District Health Unit	77.0	74.6	72.1	74.6	69.4	71.4	66.7
Southwestern Public Health	80.0	80.0	82.4	77.8	81.3	75.0	57.1
Thunder Bay District Health Unit	64.6	63.8	48.7	43.3	34.8	38.5	43.5
Timiskaming Health Unit	100.0	100.0	100.0	100.0	100.0	100.0	100.0

Public Health Unit Name	June 1 to June 7	June 2 to June 8	June 3 to June 9	June 4 to June 10	June 5 to June 11	June 6 to June 12	June 7 to June 13
Toronto Public Health	69.7	68.9	69.2	67.5	66.0	66.2	68.6
Wellington-Dufferin-Guelph Public Health	62.1	59.7	51.8	45.1	41.0	37.2	33.3
Windsor-Essex County Health Unit	63.5	59.8	59.2	55.8	53.4	58.3	54.4
York Region Public Health	66.9	66.9	67.7	65.3	67.0	66.3	65.5
<b>TOTAL ONTARIO</b>	<b>64.1</b>	<b>62.8</b>	<b>60.7</b>	<b>57.7</b>	<b>56.1</b>	<b>54.3</b>	<b>53.1</b>

**Note:** Data for calculating the number of cases tested for mutations common to VOCs or lineages using genomic analyses are obtained using information from the Laboratory object in CCM in addition to the data from the Investigation subtype field. Therefore, comparisons to counts using only information from the Investigation Subtype field may not align. The percent of cases due to a VOC may be higher than described in this report. While all confirmed COVID-19 cases are included in the denominator, not all cases were able to be tested for VOCs. Percent positivity is based on the sum of the daily cases that test positive divided by the number of cases reported during the date ranges specified in each column.

**Data Source:** CCM

**Table A4. Weekly percent positivity for cases positive for mutations or VOCs over recent rolling 7-day periods using cases tested for mutations or VOCs as the denominator, by reported date and public health unit: Ontario, June 1 to June 13, 2021**

Public Health Unit Name	June 1 to June 7	June 2 to June 8	June 3 to June 9	June 4 to June 10	June 5 to June 11	June 6 to June 12	June 7 to June 13
Algoma Public Health	100.0	100.0	100.0	100.0	100.0	100.0	100.0
Brant County Health Unit	94.4	97.9	97.6	95.0	93.8	96.4	96.3
Chatham-Kent Public Health	88.9	90.0	87.5	83.3	75.0	66.7	66.7
City of Hamilton Public Health Services	83.7	83.8	80.0	73.2	69.0	68.0	65.6
Durham Region Health Department	92.8	92.1	90.8	87.8	89.5	89.8	88.5
Eastern Ontario Health Unit	100.0	100.0	100.0	100.0	100.0	100.0	100.0
Grey Bruce Health Unit	42.9	14.3	15.4	6.7	5.6	5.3	4.0
Haldimand-Norfolk Health Unit	100.0	100.0	100.0	100.0	100.0	100.0	100.0
Haliburton, Kawartha, Pine Ridge District Health Unit	55.9	48.4	44.0	43.5	33.3	35.7	37.5
Halton Region Public Health	66.4	63.6	61.8	57.4	57.3	54.5	53.8
Hastings Prince Edward Public Health	0.0	0.0	50.0	50.0	50.0	75.0	75.0
Huron Perth Public Health	92.3	70.0	71.4	68.8	56.3	50.0	42.9
Kingston, Frontenac and Lennox & Addington Public Health	100.0	100.0	100.0	100.0	100.0	100.0	100.0
Lambton Public Health	87.5	95.7	90.9	85.7	86.7	81.8	80.0



Public Health Unit Name	June 1 to June 7	June 2 to June 8	June 3 to June 9	June 4 to June 10	June 5 to June 11	June 6 to June 12	June 7 to June 13
Leeds, Grenville & Lanark District Health Unit	0.0	0.0	100.0	100.0	100.0	100.0	100.0
Middlesex-London Health Unit	97.1	97.1	96.3	96.0	95.5	94.1	94.7
Niagara Region Public Health	99.2	99.1	98.0	96.2	95.8	95.7	93.2
North Bay Parry Sound District Health Unit	75.0	100.0	100.0	95.0	90.9	92.0	92.0
Northwestern Health Unit	100.0	100.0	100.0	100.0	100.0	100.0	100.0
Ottawa Public Health	95.7	95.5	94.4	94.6	94.7	93.7	89.8
Peel Public Health	79.3	78.7	78.7	76.6	74.2	71.8	73.1
Peterborough Public Health	92.6	92.0	91.7	96.0	95.7	90.9	81.8
Porcupine Health Unit	89.3	89.1	92.6	90.2	92.1	91.7	92.5
Public Health Sudbury & Districts	75.0	77.8	85.7	85.7	80.0	75.0	71.4
Region of Waterloo Public Health and Emergency Services	61.7	51.3	40.6	33.3	27.4	21.7	16.6
Renfrew County and District Health Unit	100.0	100.0	100.0	100.0	100.0	100.0	100.0
Simcoe Muskoka District Health Unit	85.6	84.1	82.2	85.9	82.4	85.4	82.1
Southwestern Public Health	100.0	100.0	93.3	93.3	92.9	85.7	70.6
Thunder Bay District Health Unit	96.9	96.8	95.0	92.9	88.9	90.9	83.3
Timiskaming Health Unit	100.0	100.0	100.0	100.0	100.0	100.0	100.0

Public Health Unit Name	June 1 to June 7	June 2 to June 8	June 3 to June 9	June 4 to June 10	June 5 to June 11	June 6 to June 12	June 7 to June 13
Toronto Public Health	82.8	82.0	81.9	81.2	81.1	82.4	84.3
Wellington-Dufferin-Guelph Public Health	70.1	67.6	58.0	52.3	48.5	45.7	42.4
Windsor-Essex County Health Unit	88.0	78.0	74.4	72.6	71.2	71.2	69.8
York Region Public Health	82.1	80.0	79.4	76.3	78.2	76.8	77.1
<b>TOTAL ONTARIO</b>	<b>82.7</b>	<b>80.7</b>	<b>78.6</b>	<b>75.6</b>	<b>73.7</b>	<b>71.6</b>	<b>70.3</b>

**Note:** Data for calculating the number of cases tested for mutations common to VOCs or lineages using genomic analyses are obtained using information from the Laboratory object in CCM in addition to the data from the Investigation subtype field. Therefore, comparisons to counts using only information from the Investigation Subtype field may not align. The percent of cases due to a VOC may be higher than described in this report. Percent positivity is based on the sum of the daily cases that test positive divided by the number of cases that were tested for mutations common to VOCs or lineages (e.g. those identified as 'Detected' or 'Not Detected') during the date ranges specified in each column.

**Data Source:** CCM

## Citation

Ontario Agency for Health Protection and Promotion (Public Health Ontario). Epidemiologic summary: COVID-19 in Ontario – January 15, 2020 to June 18, 2021. Toronto, ON: Queen’s Printer for Ontario; 2021.

## Disclaimer

This document was developed by Public Health Ontario (PHO). PHO provides scientific and technical advice to Ontario’s government, public health organizations and health care providers. PHO’s work is guided by the current best available evidence at the time of publication. The application and use of this document is the responsibility of the user. PHO assumes no liability resulting from any such application or use. This document may be reproduced without permission for non-commercial purposes only and provided that appropriate credit is given to PHO. No changes and/or modifications may be made to this document without express written permission from PHO.

## For Further Information

For more information, [cd@oahpp.ca](mailto:cd@oahpp.ca).

## Public Health Ontario

Public Health Ontario is an agency of the Government of Ontario dedicated to protecting and promoting the health of all Ontarians and reducing inequities in health. Public Health Ontario links public health practitioners, front-line health workers and researchers to the best scientific intelligence and knowledge from around the world.

For more information about PHO, visit [publichealthontario.ca](http://publichealthontario.ca).



©Queen’s Printer for Ontario, 2021