

## DAILY EPIDEMIOLOGICAL SUMMARY

# COVID-19 in Ontario: January 15, 2020 to August 21, 2021

This report includes the most current information available from CCM as of **August 21, 2021**.

Please visit the interactive [Ontario COVID-19 Data Tool](#) to explore recent COVID-19 data by public health unit, age group, sex, and trends over time.

A [weekly summary report](#) is available with additional information to complement the daily report.

This **daily** report provides an epidemiologic summary of recent COVID-19 activity in Ontario. The change in cases is determined by taking the cumulative difference between the current day and the previous day.

## Highlights

- There are a total of 559,512 confirmed cases of COVID-19 in Ontario reported to date.
- Compared to the previous day, this represents:
  - An increase of 722 confirmed cases (percent change of +4.8%)
  - An increase of 2 death (percent change of +100.0%)
  - An increase of 391 resolved cases (percent change of -17.7%)

**Note:** Variant of concern lineage and mutation data has been temporarily removed due to ongoing data issues related to CCM system upgrades.

In this document, the term 'change in cases' refers to cases publicly reported by the province for a given day. Data corrections or updates can result in case records being removed and or updated from past reports and may result in subset totals for updated case counts (i.e., age group, gender) differing from the overall updated case counts.

The term public health unit reported date in this document refers to the date local public health units were first notified of the case.

## Case Characteristics

**Table 1a. Summary of recent confirmed cases of COVID-19: Ontario**

	Change in cases August 20, 2021	Change in cases August 21, 2021	Percentage change August 21, 2021 compared to August 20, 2021	Cumulative case count as of August 21, 2021
Total number of cases	689	722	+4.8%	559,512
Number of deaths	1	2	+100.0%	9,453
Number resolved	475	391	-17.7%	545,070

**Note:** The number of cases publicly reported by the province each day may not align with case counts reported to public health on a given day; public health unit reported date refers to the date local public health was first notified of the case. Data corrections or updates can result in case records being removed and or updated from past reports.

**Data Source:** CCM

**Table 1b. Summary of recent confirmed cases of COVID-19 by age group and gender: Ontario**

	Change in cases August 20, 2021	Change in cases August 21, 2021	Cumulative case count as of August 21, 2021
Gender: Male	355	332	278,941
Gender: Female	324	368	276,830
Ages: 0-4	23	31	15,082
Ages: 5-11	75	37	26,545
Ages: 12-19	70	57	49,556
Ages: 20-39	345	365	210,644
Ages: 40-59	119	160	158,640
Ages: 60-79	45	63	73,619
Ages: 80 and over	10	8	25,326

**Note:** Not all cases have a reported age or gender reported. Data corrections or updates can result in case records being removed and or updated from past reports and may result in subset totals (i.e., age group, gender) differing from past publicly reported case counts.

**Data Source:** CCM

**Table 2. Summary of recent confirmed cases of COVID-19 in long-term care homes: Ontario**

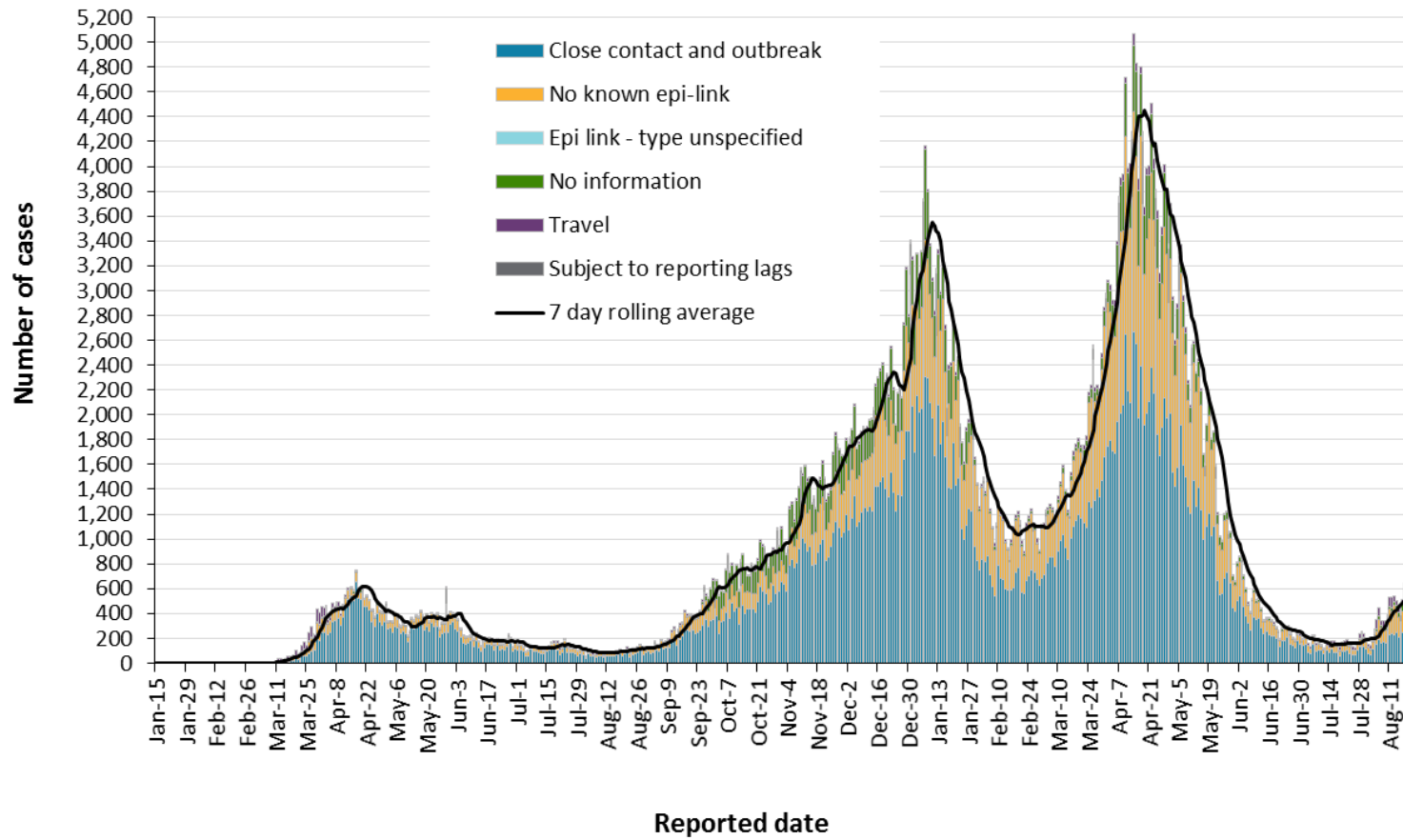
Long-term care home cases	Change in cases August 20, 2021	Change in cases August 21, 2021	Cumulative case count as of August 21, 2021
Residents	3	-1	15,420
Health care workers	10	4	7,231
Deaths among residents	0	-1	3,974
Deaths among health care workers	0	0	10

**Note:** Information on how long-term care home residents and health care workers are identified is available in the [technical notes](#). Also, the change in cases in these categories may represent existing case records that have been updated.

**Data Source:** CCM

# Time

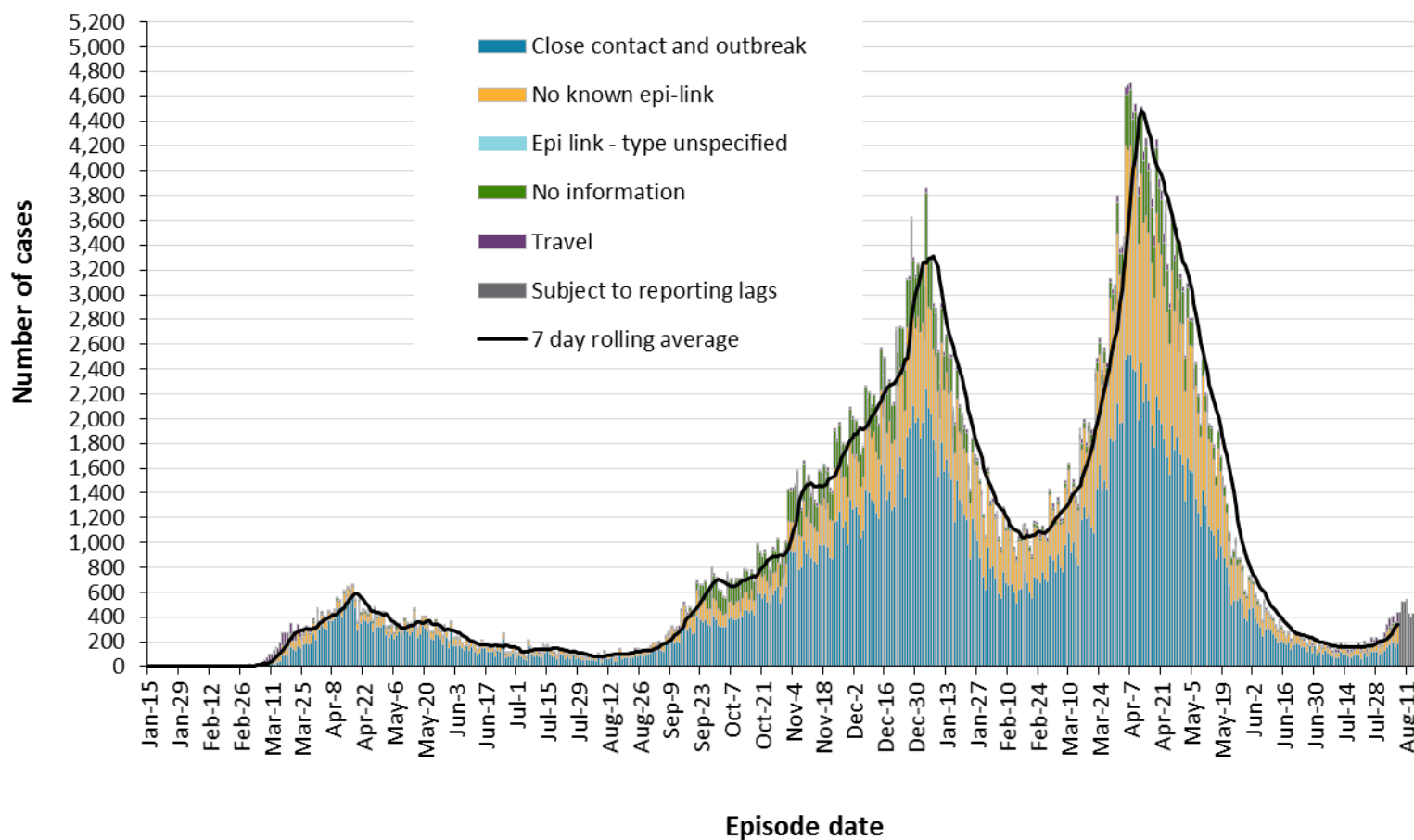
Figure 1. Confirmed cases of COVID-19 by likely acquisition and public health unit reported date: Ontario, January 15, 2020 to August 21, 2021



Data Source: CCM

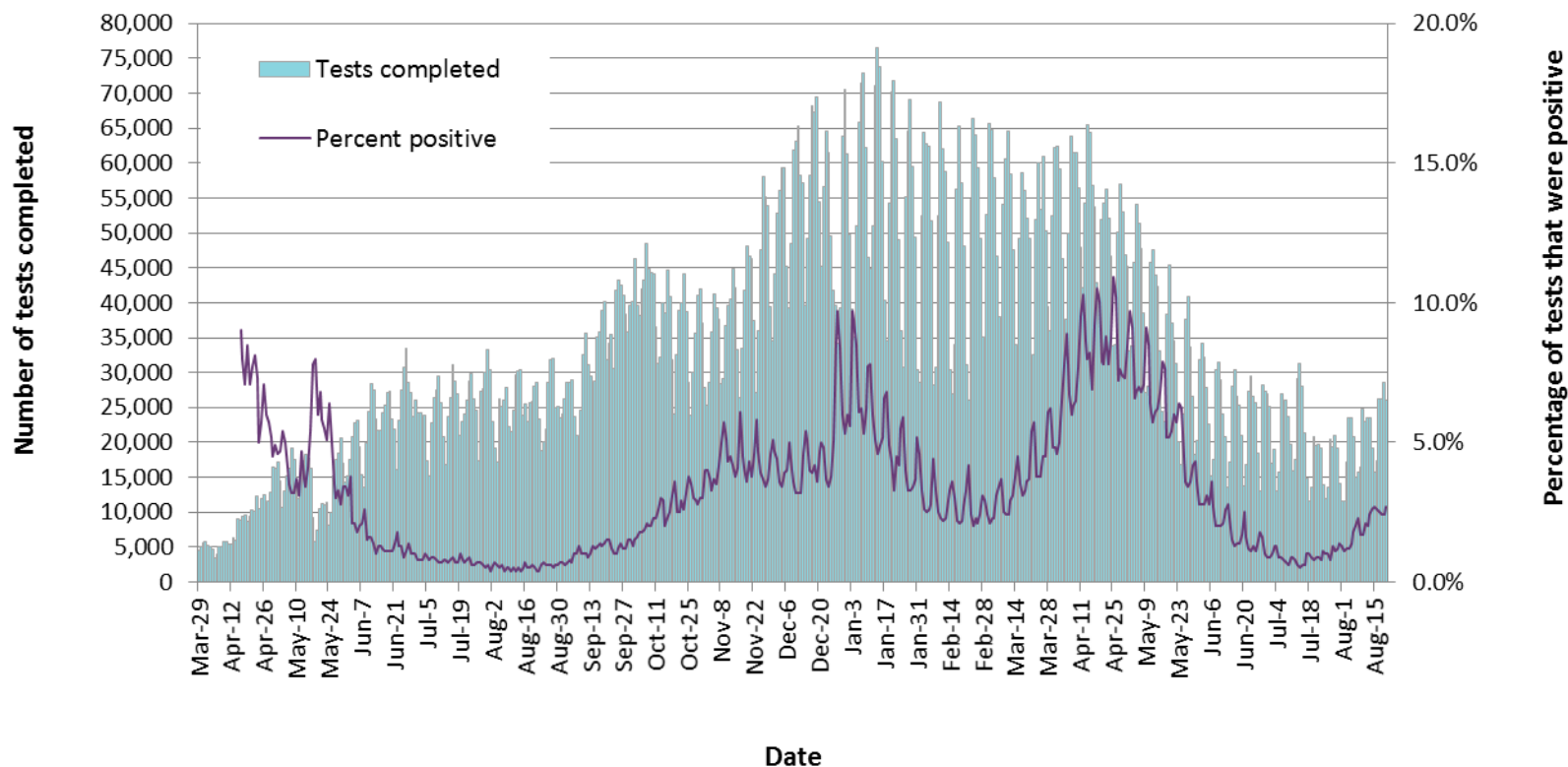
COVID-19 in Ontario: January 15, 2020 to August 21, 2021

**Figure 2. Confirmed cases of COVID-19 by likely acquisition and approximation of symptom onset date: Ontario, January 15, 2020 to August 21, 2021**



**Note:** Not all cases may have an episode date and those without one are not included in the figure. Episode date is defined and available in the [technical notes](#).  
**Data Source:** CCM

**Figure 3. Number of COVID-19 tests completed and percent positivity: Ontario, March 29, 2020 to August 20, 2021**

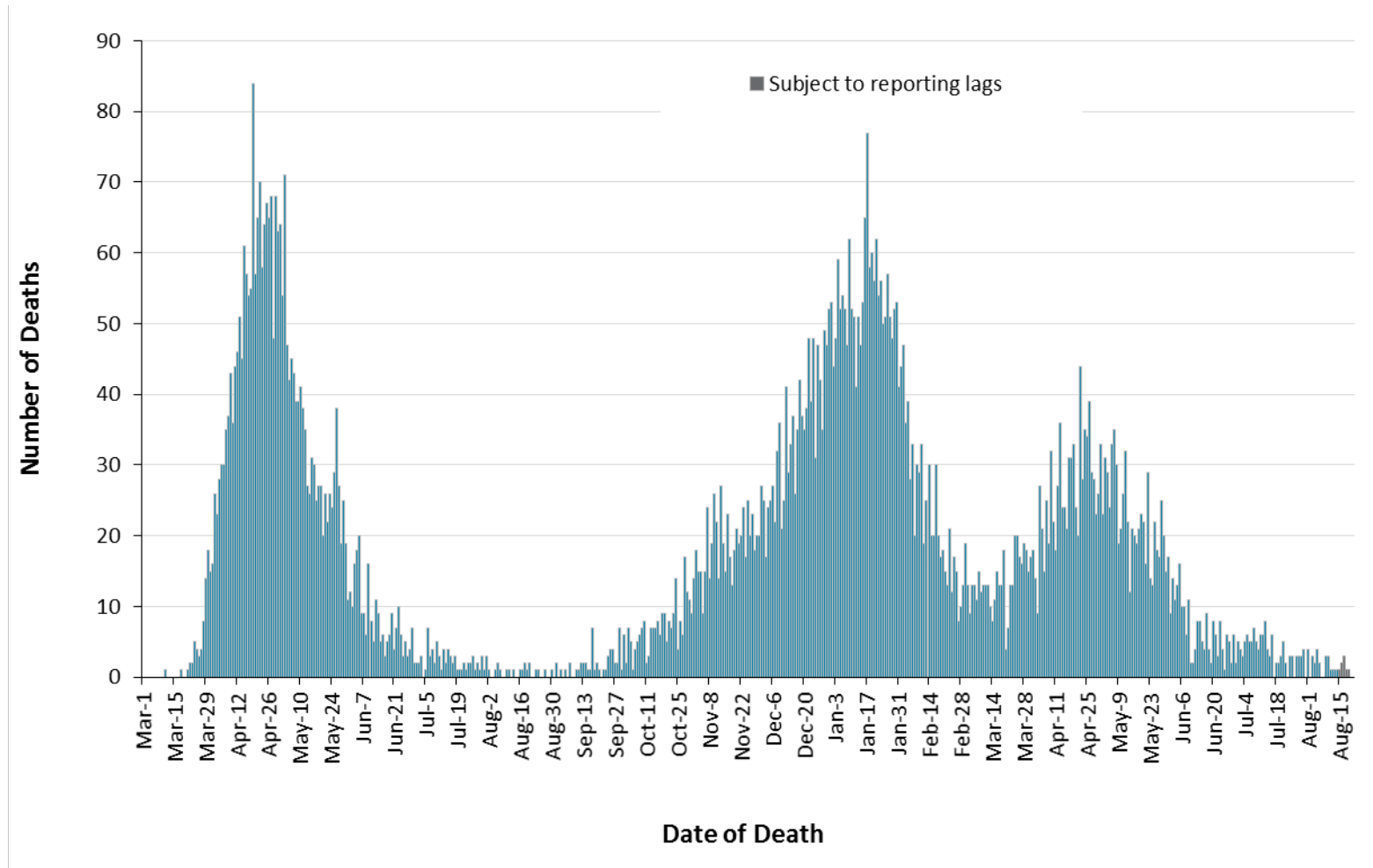


**Note:** The number of tests performed does not reflect the number of specimens or persons tested. More than one test may be performed per specimen or per person. As such, the percentage of tests that were positive does not necessarily translate to the number of specimens or persons testing positive.

**Data Source:** The Provincial COVID-19 Diagnostics Network, data reported by member microbiology laboratories.

# Severity

Figure 4. Confirmed deaths among COVID-19 cases by date of death: Ontario, March 1, 2020 to August 21, 2021



**Note:** Cases without a death date are not included in the figure.

**Data Source:** CCM



**Table 3. Confirmed cases of COVID-19 by severity: Ontario**

	Cumulative case count as of August 21, 2021	Percentage of all cases
Cumulative deaths reported (please note there may be a reporting delay for deaths)	9,453	1.7%
Deaths reported in ages: 19 and under	5	< 0.1%
Deaths reported in ages: 20-39	91	< 0.1%
Deaths reported in ages: 40-59	619	0.4%
Deaths reported in ages: 60-79	3,053	4.1%
Deaths reported in ages: 80 and over	5,684	22.4%
Ever in ICU	5,554	1.0%
Ever hospitalized	28,623	5.1%

**Note:** Not all cases have an age reported. Data corrections or updates can result in case records being removed and/or updated and may result in totals differing from past publicly reported case counts. Percentage of deaths reported for each age group is calculated using all cases in the age group as the denominator.

**Data Source:** CCM

## Geography

**Table 4. Summary of recent confirmed cases of COVID-19 by public health unit and region: Ontario**

Public Health Unit Name	Change in cases August 20, 2021	Change in cases August 21, 2021	Cumulative case count	Cumulative rate per 100,000 population
Northwestern Health Unit	1	0	1,114	1,372.2
Thunder Bay District Health Unit	-1	2	3,355	2,127.4
<b>TOTAL NORTH WEST</b>	0	2	4,469	1,870.7
Algoma Public Health	0	3	419	355.6
North Bay Parry Sound District Health Unit	0	2	661	511.2
Porcupine Health Unit	0	2	2,157	2,537.6
Public Health Sudbury & Districts	4	3	2,222	1,082.5
Timiskaming Health Unit	0	0	209	616.8
<b>TOTAL NORTH EAST</b>	4	10	5,668	992.1
Ottawa Public Health	19	23	28,098	2,693.6
Eastern Ontario Health Unit	2	3	4,676	2,166.2
Hastings Prince Edward Public Health	0	6	1,233	713.4
Kingston, Frontenac and Lennox & Addington Public Health	4	0	1,596	762.8
Leeds, Grenville & Lanark District Health Unit	1	2	1,788	993.6
Renfrew County and District Health Unit	1	-1	767	707.1
<b>TOTAL EASTERN</b>	27	33	38,158	1,977.6

Public Health Unit Name	Change in cases August 20, 2021	Change in cases August 21, 2021	Cumulative case count	Cumulative rate per 100,000 population
Durham Region Health Department	36	39	25,835	3,631.4
Haliburton, Kawartha, Pine Ridge District Health Unit	3	-1	2,313	1,212.7
Peel Public Health	94	63	111,155	7,108.7
Peterborough Public Health	3	2	1,661	1,121.4
Simcoe Muskoka District Health Unit	22	25	12,728	2,105.5
York Region Public Health	86	70	53,839	4,485.6
<b>TOTAL CENTRAL EAST</b>	244	198	207,531	4,696.7
Toronto Public Health	130	170	168,131	5,626.1
<b>TOTAL TORONTO</b>	130	170	168,131	5,626.1
Chatham-Kent Public Health	2	4	1,974	1,851.4
Grey Bruce Health Unit	4	1	2,166	1,229.6
Huron Perth Public Health	9	3	2,029	1,387.4
Lambton Public Health	6	1	3,668	2,758.5
Middlesex-London Health Unit	52	26	13,127	2,570.9
Southwestern Public Health	12	7	4,050	1,850.1
Windsor-Essex County Health Unit	41	88	17,627	4,090.3
<b>TOTAL SOUTH WEST</b>	126	130	44,641	2,591.7
Brant County Health Unit	15	3	4,009	2,610.7
City of Hamilton Public Health Services	69	101	22,453	3,859.7

Public Health Unit Name	Change in cases August 20, 2021	Change in cases August 21, 2021	Cumulative case count	Cumulative rate per 100,000 population
Haldimand-Norfolk Health Unit	2	5	2,753	2,294.0
Halton Region Public Health	28	22	17,934	2,937.2
Niagara Region Public Health	18	15	16,544	3,434.3
Region of Waterloo Public Health and Emergency Services	23	23	18,770	3,101.3
Wellington-Dufferin-Guelph Public Health	3	10	8,451	2,708.7
<b>TOTAL CENTRAL WEST</b>	<b>158</b>	<b>179</b>	<b>90,914</b>	<b>3,173.5</b>
<b>TOTAL ONTARIO</b>	<b>689</b>	<b>722</b>	<b>559,512</b>	<b>3,797.4</b>

**Notes:** Health units with data corrections or updates could result in records being removed from totals, leading to negative or zero counts.

**Data Source:** CCM

## Outbreaks

**Table 5. Summary of recent confirmed COVID-19 outbreaks reported in long-term care homes, retirement homes and hospitals by status: Ontario**

Institution type	Change in outbreaks August 20, 2021	Change in outbreaks August 21, 2021	Number of ongoing outbreaks	Cumulative number of outbreaks reported
Long-term care homes	1	0	4	1,497
Retirement homes	0	0	2	877
Hospitals	0	0	2	585

**Note:** Ongoing outbreaks include all outbreaks that are 'Open' in CCM without a 'Declared Over Date' recorded, or where the outbreak started more than five months ago, even for outbreaks where the Outbreak Status value selected in CCM is 'OPEN'. The start of the outbreak is determined by the onset date of first case, or if missing the outbreak reported date, or else if that is also missing, then the outbreak created date.

**Data Source:** CCM

# Technical Notes

## Data Sources

- The data for this report were based on information successfully extracted from the Public Health Case and Contact Management Solution (CCM) for all PHUs by PHO as of **August 21, 2021 at 1 p.m.** for cases reported from February 1, 2021 onwards and as of **August 20, 2021 at 9 a.m.** for cases reported up to January 31, 2021.
- VOC data for this report were based on information successfully extracted from CCM for all PHUs by PHO as of **August 21, 2021 at 1 p.m.** for cases reported from April 1, 2021 onwards and as of **August 20, 2021 at 9 a.m.** for cases reported up to March 31, 2021.
- CCM is a dynamic disease reporting system, which allows ongoing updates to data previously entered. As a result, data extracted from CCM represent a snapshot at the time of extraction and may differ from previous or subsequent reports.
- Ontario population estimate data were sourced from Statistics Canada. Population estimates 2001-2020: Table 1 annual population estimates by age and sex for July 1, 2001 to 2020, health regions, Ontario [unpublished data table]. Ottawa, ON: Government of Canada; 2021 [received April 22, 2021].
- COVID-19 test data were based on information from The Provincial COVID-19 Diagnostics Network, reported by member microbiology laboratories.

## Data Caveats

- The data only represent cases reported to public health units and recorded in CCM. As a result, all counts will be subject to varying degrees of underreporting due to a variety of factors, such as disease awareness and medical care seeking behaviours, which may depend on severity of illness, clinical practice, changes in laboratory testing, and reporting behaviours.
- Data cleaning for older cases is incorporated on Mondays and may impact the case count published on Tuesdays
- Lags in CCM data entry due to weekend staffing may result in lower case counts than would otherwise be recorded.
- Only cases meeting the confirmed case classification as listed in the [MOH Case Definition – Coronavirus Disease \(COVID-19\) document](#) are included in the report counts from CCM
- Cases of confirmed reinfection, as defined in the provincial case definitions, are counted as unique investigations.
- Case classification information may be updated for individuals with a positive result issued from a point-of-care assays.
- The number of tests performed does not reflect the number of specimens or persons tested. More than one test may be performed per specimen or per person. As such, the percentage of tests that were positive does not necessarily translate to the number of specimens or persons testing positive.

- Reported date is the date the case was reported to the public health unit.
- Case episode date represents an estimate of disease onset. This date is calculated based on the earliest date of symptom onset, specimen collection/test date, or the date reported to the public health unit.
- Resolved cases are determined only for COVID-19 cases that have not died. Cases that have died are considered fatal and not resolved. The following cases are classified as resolved:
  - Cases that are reported as 'recovered' in CCM
  - Cases that are not hospitalized and are 14 days past their episode date
  - Cases that are currently hospitalized (no hospital end date entered) and have a status of 'closed' in CCM (indicating public health unit follow-up is complete) and are 14 days past their symptom onset date or specimen collection date
- Hospitalization includes all cases for which a hospital admission date was reported or hospitalization/ICU was reported as 'Yes' at the time of data extraction. It includes cases that have been discharged from hospital as well as cases that are currently hospitalized. Emergency room visits are not included in the number of reported hospitalizations.
- ICU admission includes all cases for which an ICU admission date was reported at the time of data extraction. It is a subset of the count of hospitalized cases. It includes cases that have been treated or that are currently being treated in an ICU.
- Orientation of case counts by geography is based on the permanent health unit. This is equivalent to the diagnosing health unit (DHU) in iPHIS. DHU refers to the case's public health unit of residence at the time of illness onset and not necessarily the location of exposure. Cases for which the DHU was reported as MOH-PHO (to signify a case that is not a resident of Ontario) have been excluded from the analyses.
- Likely source of acquisition is determined by examining the epidemiologic link and epidemiologic link status fields in CCM. If no epidemiologic link is identified in those fields the risk factor fields are examined to determine whether a case travelled, was associated with a confirmed outbreak, was a contact of a case, had no known epidemiological link (sporadic community transmission) or was reported to have an unknown source/no information was reported. Some cases may have no information reported if the case is untraceable, was lost to follow-up or referred to FNIHB. Cases with multiple risk factors were assigned to a single likely acquisition source group which was determined hierarchically in the following order:
  - For cases with an episode date *on or after* April 1, 2020: Outbreak-associated > close contact of a confirmed case > travel > no known epidemiological link > information missing or unknown
  - For cases with an episode date *before* April 1, 2020: Travel > outbreak-associated > close contact of a confirmed case > no known epidemiological link > information missing or unknown
- Deaths are determined by using the outcome field in CCM. Any case marked 'Fatal' is included in the deaths data. The CCM field Type of Death is not used to further categorize the data.

- The date of death is determined using the outcome date field for cases marked as 'Fatal' in the outcome field.
- COVID-19 cases from CCM for which the Classification and/or Disposition was reported as ENTERED IN ERROR, DOES NOT MEET DEFINITION, IGNORE, DUPLICATE or any variation on these values have been excluded. The provincial case count for COVID-19 may include some duplicate records, if these records were not identified and resolved.
- Ongoing outbreaks include all outbreaks that are 'Open' in CCM without a 'Declared Over Date' recorded, or where the outbreak started more than five months ago, even for outbreaks where the Outbreak Status value selected in CCM is 'OPEN'. The start of the outbreak is determined by the onset date of first case, or if missing the outbreak reported date, or else if that is also missing, then the outbreak created date.
- 'Long-term care home residents' includes cases that reported 'Yes' to the risk factor 'Resident of a long-term care home'; or 'Yes' to the risk factor 'Resident of nursing home or other chronic care facility' and reported to be part of an outbreak assigned as a long-term care home (via the Outbreak number or case comments field); or were reported to be part of an outbreak assigned as a long-term care home (via the outbreak number or case comments field) with an age over 70 years and did not report 'No' to the risk factors 'Resident of long-term care home' or 'Resident of nursing home or other chronic care facility'. 'Long-term care home residents' excludes cases that reported 'Yes' to any of the health care worker occupational risk factors.
- The 'health care workers' variable includes cases that reported 'Yes' to any of the occupation of health care worker, doctor, nurse, dentist, dental hygienist, midwife, other medical technicians, personal support worker, respiratory therapist, first responder.
- 'Health care workers associated with long-term care outbreaks' includes 'health care workers' reported to be part of an outbreak assigned as a long-term care home (via the outbreak number or case comments field). Excludes cases that reported 'Yes' to risk factors 'Resident of long-term care home' or 'Resident of nursing home or other chronic care facility' and 'Yes' to the calculated 'health care workers' variable.
- Percent change is calculated by taking the difference between the current period (i.e., daily count or sum of the daily count over a 7-day period) and previous period (i.e., daily count or sum of the daily count over a 7-day period), divided by the previous period.



## Appendix A

**Table A1. Weekly rates of confirmed COVID-19 cases per 100,000 population over recent rolling 7-day periods, by reported date and public health unit: Ontario, August 6 to August 18, 2021**

Public Health Unit Name	August 6 to August 12	August 7 to August 13	August 8 to August 14	August 9 to August 15	August 10 to August 16	August 11 to August 17	August 12 to August 18	% change from August 6 - August 12 to August 12 - August 18
<b>NORTH WEST</b>								
Northwestern Health Unit	9.9	9.9	9.9	8.6	9.9	8.6	4.9	-50.5%
Thunder Bay District Health Unit	2.5	1.9	1.9	1.9	3.2	3.8	3.2	+28.0%
<b>NORTH EAST</b>								
Algoma Public Health	0.8	1.7	1.7	1.7	1.7	2.5	6.8	+750.0%
North Bay Parry Sound District Health Unit	3.9	3.9	3.1	3.1	3.1	1.5	0.0	-100.0%
Porcupine Health Unit	1.2	0.0	1.2	1.2	2.4	4.7	4.7	+291.7%
Public Health Sudbury & Districts	9.7	8.3	8.3	7.3	8.8	12.2	13.2	+36.1%
Timiskaming Health Unit	3.0	0.0	0.0	0.0	0.0	0.0	0.0	-100.0%
<b>EASTERN</b>								
Ottawa Public Health	9.8	10.9	11.3	11.6	12.4	12.4	12.8	+30.6%
Eastern Ontario Health Unit	13.0	11.6	11.1	7.9	7.9	5.6	5.1	-60.8%
Hastings Prince Edward Public Health	13.3	13.9	13.3	15.0	16.2	17.4	16.8	+26.3%

Public Health Unit Name	August 6 to August 12	August 7 to August 13	August 8 to August 14	August 9 to August 15	August 10 to August 16	August 11 to August 17	August 12 to August 18	% change from August 6 - August 12 to August 12 - August 18
Kingston, Frontenac and Lennox & Addington Public Health	4.3	3.3	2.4	2.4	2.4	2.9	2.4	-44.2%
Leeds, Grenville & Lanark District Health Unit	5.0	8.3	10.6	11.1	11.1	10.6	10.0	+100.0%
Renfrew County and District Health Unit	0.9	0.0	0.0	0.0	0.0	0.0	0.9	0.0%
<b>CENTRAL EAST</b>								
Durham Region Health Department	19.1	19.1	19.3	19.7	20.9	20.8	19.8	+3.7%
Haliburton, Kawartha, Pine Ridge District Health Unit	6.8	5.8	7.3	8.4	8.9	8.4	10.0	+47.1%
Peel Public Health	22.7	24.6	25.2	26.9	27.3	29.1	30.9	+36.1%
Peterborough Public Health	1.4	2.7	2.7	3.4	3.4	3.4	7.4	+428.6%
Simcoe Muskoka District Health Unit	16.0	16.5	17.4	17.4	17.7	18.9	20.0	+25.0%
York Region Public Health	26.6	26.1	28.0	28.9	29.6	29.9	31.4	+18.0%
<b>TORONTO</b>								
Toronto Public Health	24.1	24.8	25.5	26.5	26.6	27.7	29.0	+20.3%
<b>SOUTH WEST</b>								
Chatham-Kent Public Health	16.9	20.6	23.4	27.2	26.3	26.3	29.1	+72.2%
Grey Bruce Health Unit	23.8	22.7	21.6	13.1	15.3	10.8	10.8	-54.6%

Public Health Unit Name	August 6 to August 12	August 7 to August 13	August 8 to August 14	August 9 to August 15	August 10 to August 16	August 11 to August 17	August 12 to August 18	% change from August 6 - August 12 to August 12 - August 18
Huron Perth Public Health	10.9	11.6	17.8	14.4	15.0	13.7	13.7	+25.7%
Lambton Public Health	5.3	8.3	11.3	9.8	10.5	12.8	12.8	+141.5%
Middlesex-London Health Unit	15.7	18.4	19.6	21.2	22.1	25.1	26.0	+65.6%
Southwestern Public Health	13.7	15.5	13.7	14.6	14.2	10.0	9.6	-29.9%
Windsor-Essex County Health Unit	46.9	44.3	50.4	56.9	65.7	68.9	75.0	+59.9%
<b>CENTRAL WEST</b>								
Brant County Health Unit	20.8	28.7	31.3	32.6	37.1	38.4	33.9	+63.0%
City of Hamilton Public Health Services	48.3	47.4	51.4	54.8	53.5	56.0	56.0	+15.9%
Haldimand-Norfolk Health Unit	9.2	7.5	7.5	9.2	10.0	17.5	15.0	+63.0%
Halton Region Public Health	21.1	22.1	23.1	22.8	22.9	22.9	21.6	+2.4%
Niagara Region Public Health	10.0	12.7	16.4	17.4	19.5	21.0	19.1	+91.0%
Region of Waterloo Public Health and Emergency Services	20.7	21.5	22.1	21.5	20.0	20.3	21.1	+1.9%
Wellington-Dufferin-Guelph Public Health	10.9	10.3	9.9	10.9	10.9	12.2	14.4	+32.1%
<b>TOTAL ONTARIO</b>	<b>19.7</b>	<b>20.4</b>	<b>21.5</b>	<b>22.3</b>	<b>22.9</b>	<b>23.8</b>	<b>24.6</b>	<b>+24.9%</b>

**Note:** Rates are based on the sum of the daily case counts during the date ranges specified in each column.

**Data Source:** CCM

## Citation

Ontario Agency for Health Protection and Promotion (Public Health Ontario). Epidemiologic summary: COVID-19 in Ontario – January 15, 2020 to August 21, 2021. Toronto, ON: Queen’s Printer for Ontario; 2021.

## Disclaimer

This document was developed by Public Health Ontario (PHO). PHO provides scientific and technical advice to Ontario’s government, public health organizations and health care providers. PHO’s work is guided by the current best available evidence at the time of publication. The application and use of this document is the responsibility of the user. PHO assumes no liability resulting from any such application or use. This document may be reproduced without permission for non-commercial purposes only and provided that appropriate credit is given to PHO. No changes and/or modifications may be made to this document without express written permission from PHO.

## For Further Information

For more information, [cd@oahpp.ca](mailto:cd@oahpp.ca).

## Public Health Ontario

Public Health Ontario is an agency of the Government of Ontario dedicated to protecting and promoting the health of all Ontarians and reducing inequities in health. Public Health Ontario links public health practitioners, front-line health workers and researchers to the best scientific intelligence and knowledge from around the world.

For more information about PHO, visit [publichealthontario.ca](http://publichealthontario.ca).



©Queen’s Printer for Ontario, 2021