

DAILY EPIDEMIOLOGICAL SUMMARY

COVID-19 in Ontario: January 15, 2020 to August 29, 2021

This report includes the most current information available from CCM as of **August 29, 2021**.

Please visit the interactive [Ontario COVID-19 Data Tool](#) to explore recent COVID-19 data by public health unit, age group, sex, and trends over time.

A [weekly summary report](#) is available with additional information to complement the daily report.

This **daily** report provides an epidemiologic summary of recent COVID-19 activity in Ontario. The change in cases is determined by taking the cumulative difference between the current day and the previous day.

Highlights

- There are a total of 565,025 confirmed cases of COVID-19 in Ontario reported to date.
- Compared to the previous day, this represents:
 - An increase of 694 confirmed cases (percent change of -6.2%)
 - An increase of 0 deaths (percent change -100.0%)
 - An increase of 540 resolved cases (percent change of -3.7%)

In this document, the term 'change in cases' refers to cases publicly reported by the province for a given day. Data corrections or updates can result in case records being removed and or updated from past reports and may result in subset totals for updated case counts (i.e., age group, gender) differing from the overall updated case counts.

The term public health unit reported date in this document refers to the date local public health units were first notified of the case.

Case Characteristics

Table 1a. Summary of recent confirmed cases of COVID-19: Ontario

	Change in cases August 28, 2021	Change in cases August 29, 2021	Percentage change August 29, 2021 compared to August 28, 2021	Cumulative case count as of August 29, 2021
Total number of cases	740	694	-6.2%	565,025
Number of deaths	2	0	-100.0%	9,498
Number resolved	561	540	-3.7%	549,499

Note: The number of cases publicly reported by the province each day may not align with case counts reported to public health on a given day; public health unit reported date refers to the date local public health was first notified of the case. Data corrections or updates can result in case records being removed and or updated from past reports.

Data Source: CCM

Table 1b. Summary of recent confirmed cases of COVID-19 by age group and gender: Ontario

	Change in cases August 28, 2021	Change in cases August 29, 2021	Cumulative case count as of August 29, 2021
Gender: Male	358	313	281,674
Gender: Female	361	371	279,530
Ages: 0-4	36	30	15,302
Ages: 5-11	67	78	27,046
Ages: 12-19	81	69	50,204
Ages: 20-39	307	283	213,071
Ages: 40-59	159	159	159,840
Ages: 60-79	77	62	74,046
Ages: 80 and over	13	12	25,415

Note: Not all cases have a reported age or gender reported. Data corrections or updates can result in case records being removed and or updated from past reports and may result in subset totals (i.e., age group, gender) differing from past publicly reported case counts.

Data Source: CCM

Table 2. Summary of recent confirmed cases of COVID-19 in long-term care homes: Ontario

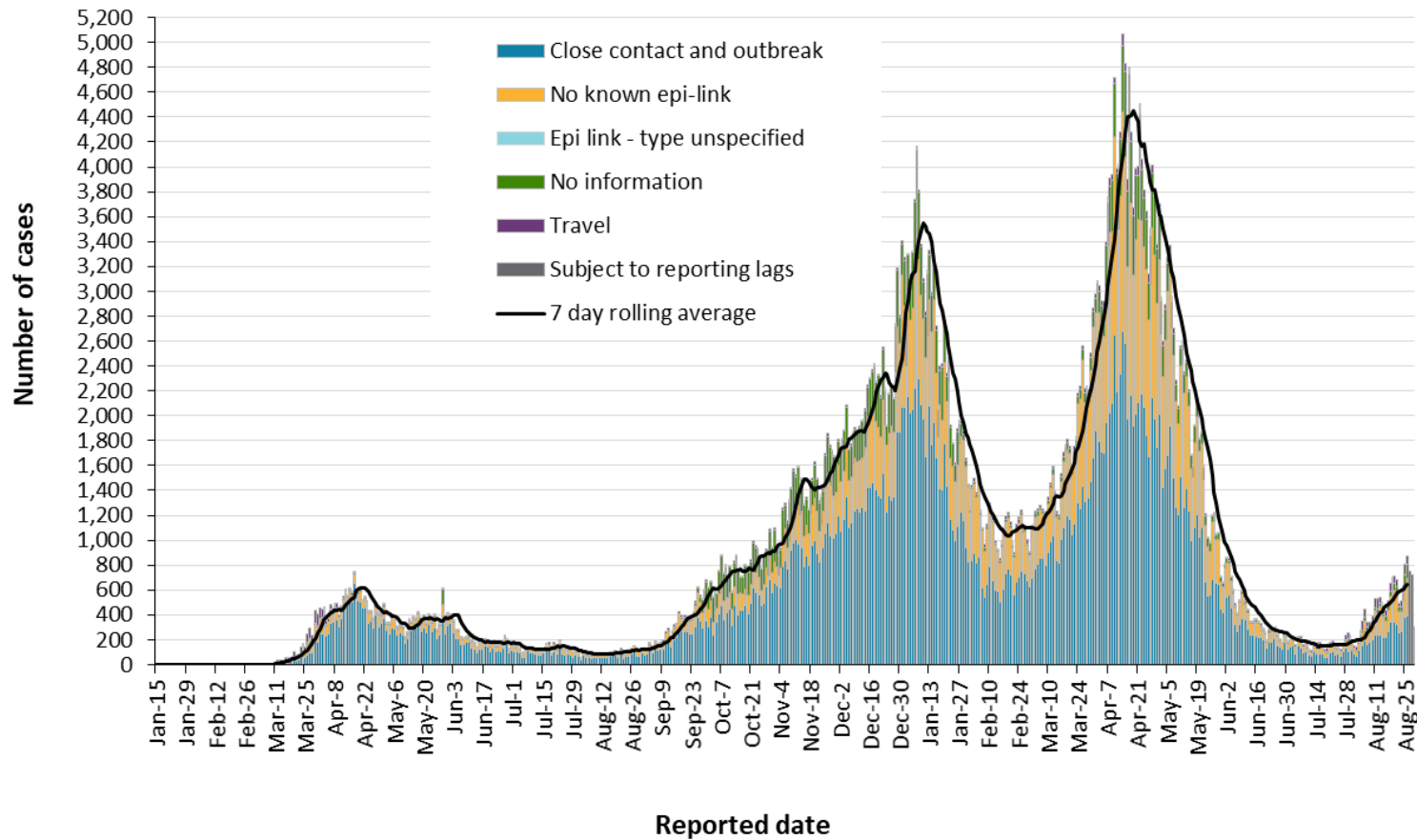
Long-term care home cases	Change in cases August 28, 2021	Change in cases August 29, 2021	Cumulative case count as of August 29, 2021
Residents	10	0	15,439
Health care workers	0	1	7,292
Deaths among residents	1	0	3,978
Deaths among health care workers	0	0	10

Note: Information on how long-term care home residents and health care workers are identified is available in the [technical notes](#). Also, the change in cases in these categories may represent existing case records that have been updated.

Data Source: CCM

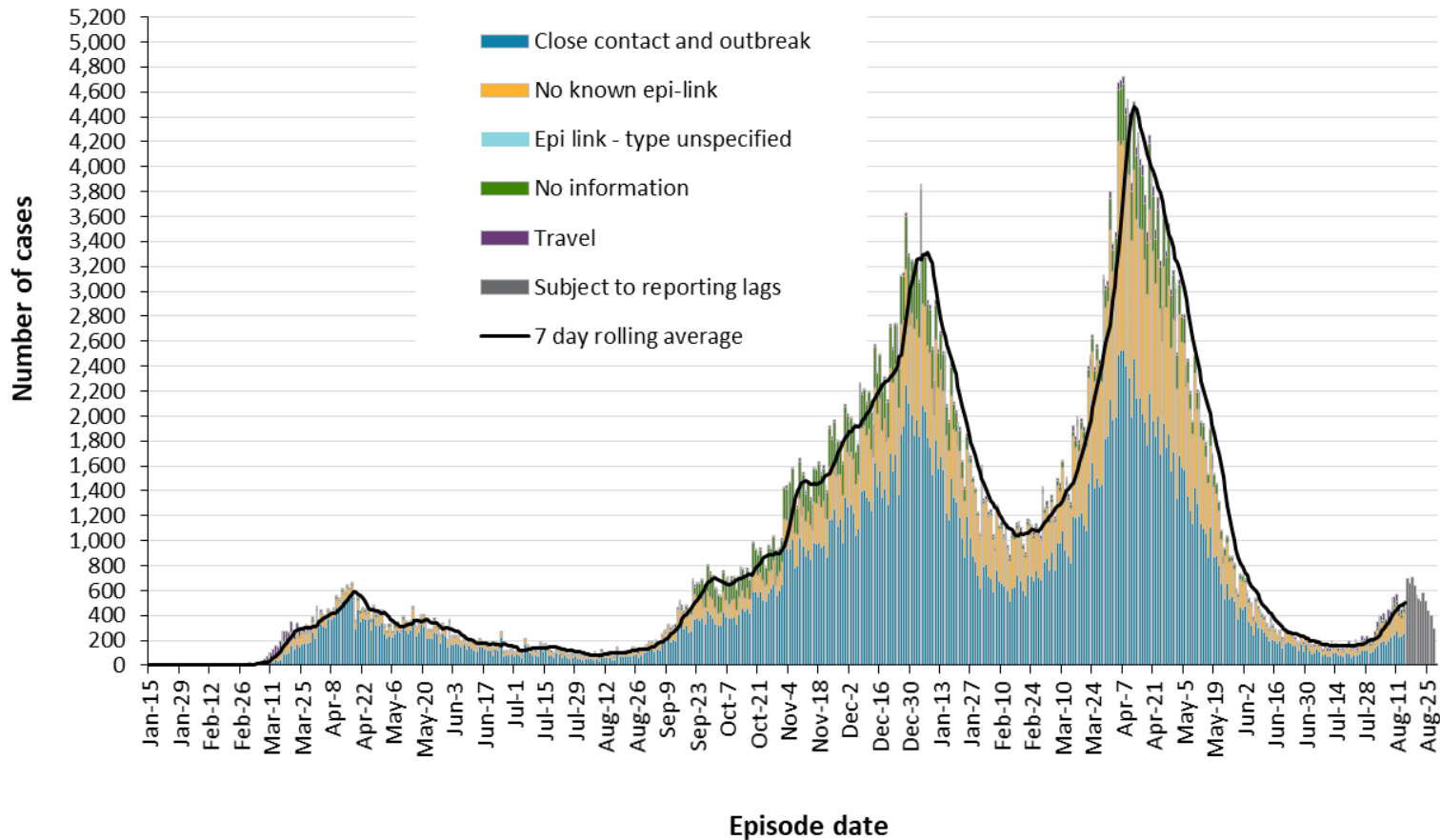
Time

Figure 1. Confirmed cases of COVID-19 by likely acquisition and public health unit reported date: Ontario, January 15, 2020 to August 29, 2021



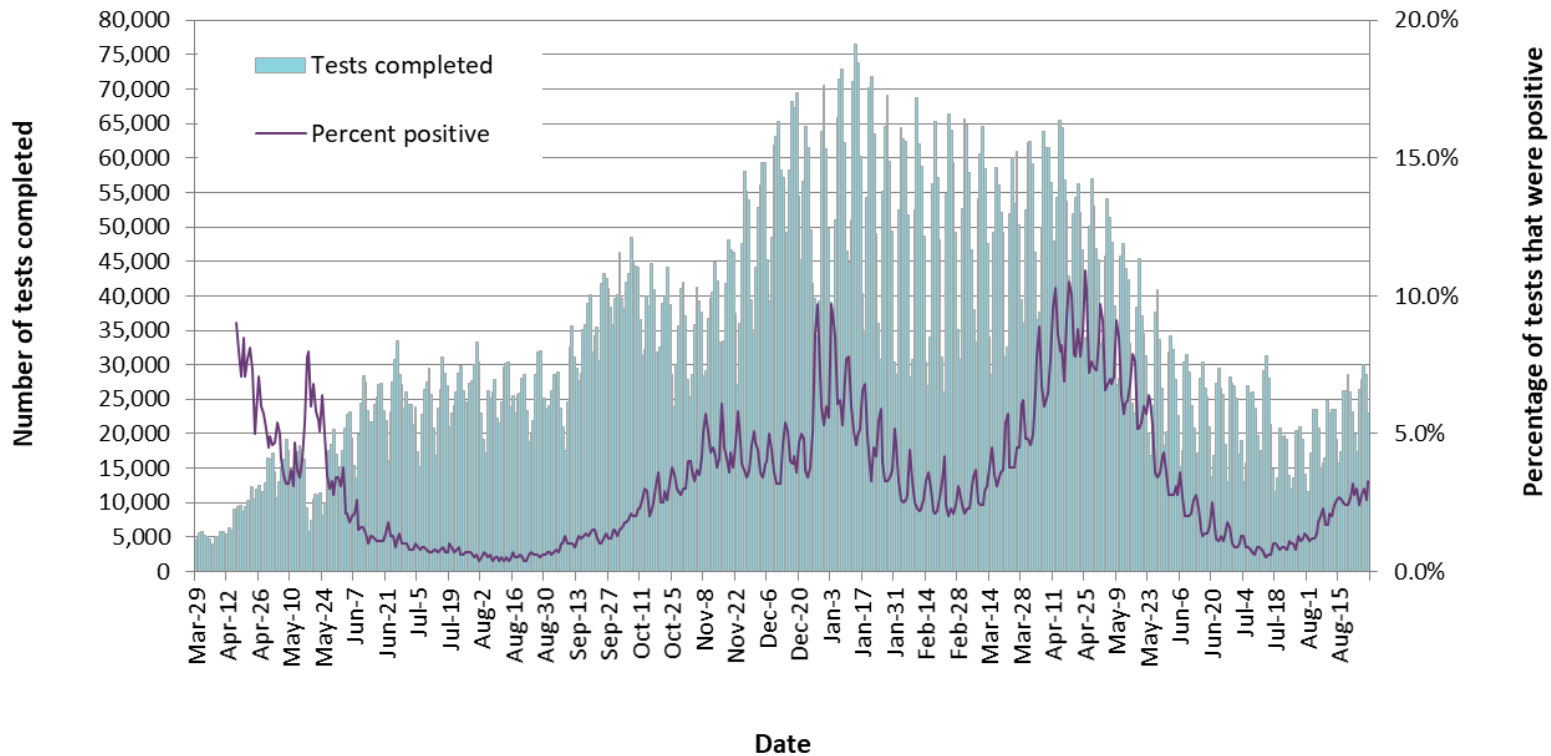
Data Source: CCM

Figure 2. Confirmed cases of COVID-19 by likely acquisition and approximation of symptom onset date: Ontario, January 15, 2020 to August 29, 2021



Note: Not all cases may have an episode date and those without one are not included in the figure. Episode date is defined and available in the [technical notes](#).
Data Source: CCM

Figure 3. Number of COVID-19 tests completed and percent positivity: Ontario, March 29, 2020 to August 28, 2021

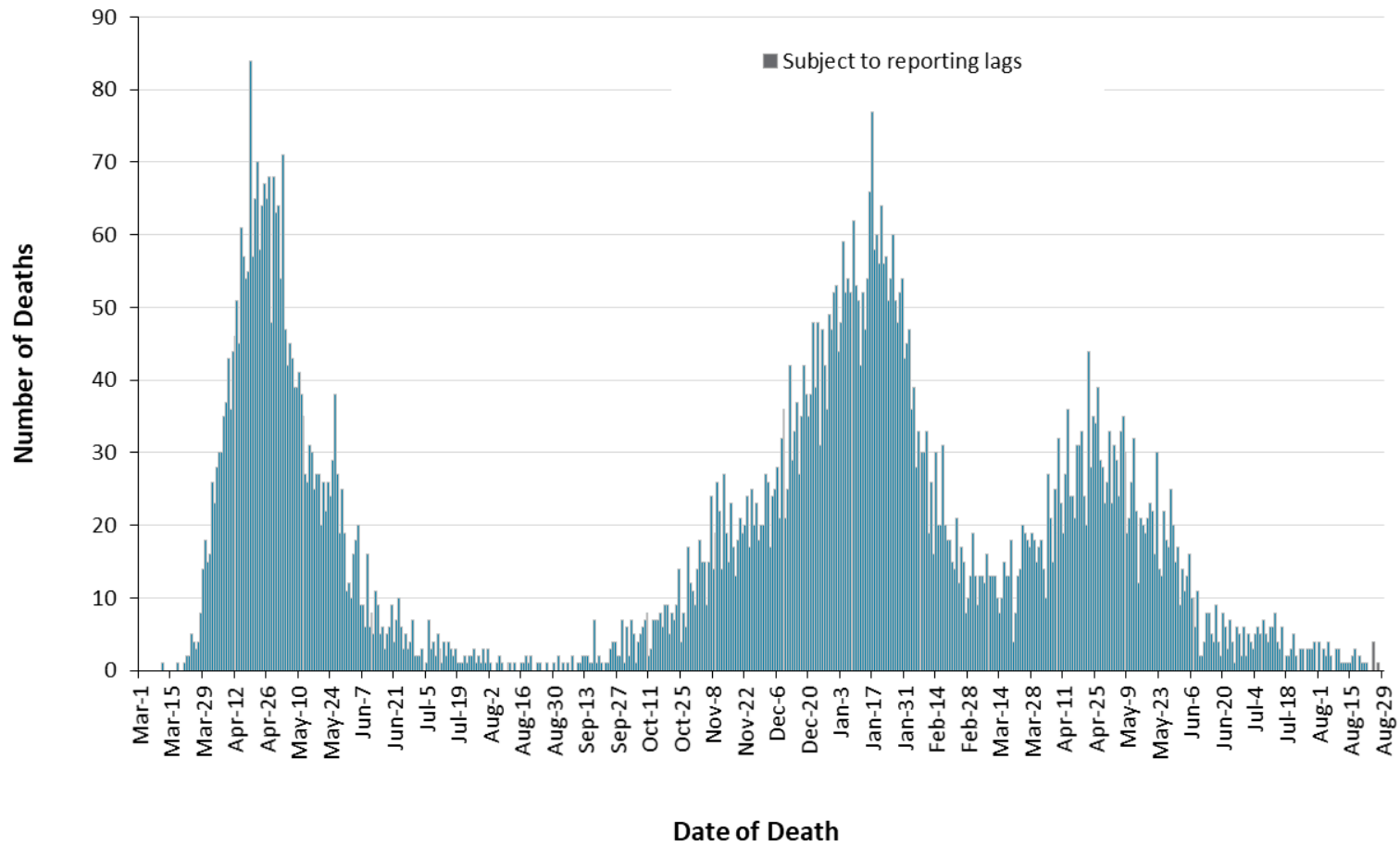


Note: The number of tests performed does not reflect the number of specimens or persons tested. More than one test may be performed per specimen or per person. As such, the percentage of tests that were positive does not necessarily translate to the number of specimens or persons testing positive.

Data Source: The Provincial COVID-19 Diagnostics Network, data reported by member microbiology laboratories.

Severity

Figure 4. Confirmed deaths among COVID-19 cases by date of death: Ontario, March 1, 2020 to August 29, 2021



Note: Cases without a death date are not included in the figure.

Data Source: CCM

Table 3. Confirmed cases of COVID-19 by severity: Ontario

	Cumulative case count as of August 29, 2021	Percentage of all cases
Cumulative deaths reported (please note there may be a reporting delay for deaths)	9,498	1.7%
Deaths reported in ages: 19 and under	5	<0.1%
Deaths reported in ages: 20-39	90	<0.1%
Deaths reported in ages: 40-59	622	0.4%
Deaths reported in ages: 60-79	3,073	4.2%
Deaths reported in ages: 80 and over	5,707	22.5%
Ever in ICU	5,612	1.0%
Ever hospitalized	28,936	5.1%

Note: Not all cases have an age reported. Data corrections or updates can result in case records being removed and/or updated and may result in totals differing from past publicly reported case counts. Percentage of deaths reported for each age group is calculated using all cases in the age group as the denominator.

Data Source: CCM

Geography

Table 4. Summary of recent confirmed cases of COVID-19 by public health unit and region: Ontario

Public Health Unit Name	Change in cases August 28, 2021	Change in cases August 29, 2021	Cumulative case count	Cumulative rate per 100,000 population
Northwestern Health Unit	0	-1	1,119	1,378.3
Thunder Bay District Health Unit	1	2	3,363	2,132.4
TOTAL NORTH WEST	1	1	4,482	1,876.2
Algoma Public Health	2	3	431	365.8
North Bay Parry Sound District Health Unit	0	1	668	516.6
Porcupine Health Unit	0	3	2,168	2,550.6
Public Health Sudbury & Districts	4	3	2,259	1,100.6
Timiskaming Health Unit	0	0	209	616.8
TOTAL NORTH EAST	6	10	5,735	1,003.9
Ottawa Public Health	31	44	28,324	2,715.3
Eastern Ontario Health Unit	10	14	4,746	2,198.7
Hastings Prince Edward Public Health	10	3	1,268	733.7
Kingston, Frontenac and Lennox & Addington Public Health	2	-1	1,605	767.1
Leeds, Grenville & Lanark District Health Unit	5	1	1,799	999.7
Renfrew County and District Health Unit	1	0	769	708.9
TOTAL EASTERN	59	61	38,511	1,995.9

Public Health Unit Name	Change in cases August 28, 2021	Change in cases August 29, 2021	Cumulative case count	Cumulative rate per 100,000 population
Durham Region Health Department	33	38	26,098	3,668.4
Haliburton, Kawartha, Pine Ridge District Health Unit	1	1	2,329	1,221.1
Peel Public Health	63	104	111,865	7,154.1
Peterborough Public Health	3	3	1,681	1,134.9
Simcoe Muskoka District Health Unit	15	16	12,897	2,133.5
York Region Public Health	63	98	54,521	4,542.4
TOTAL CENTRAL EAST	178	260	209,391	4,738.8
Toronto Public Health	141	121	169,294	5,665.0
TOTAL TORONTO	141	121	169,294	5,665.0
Chatham-Kent Public Health	9	9	2,025	1,899.3
Grey Bruce Health Unit	5	3	2,190	1,243.3
Huron Perth Public Health	10	1	2,057	1,406.6
Lambton Public Health	3	1	3,687	2,772.8
Middlesex-London Health Unit	32	12	13,333	2,611.2
Southwestern Public Health	-1	1	4,073	1,860.6
Windsor-Essex County Health Unit	90	74	18,132	4,207.5
TOTAL SOUTH WEST	148	101	45,497	2,641.4
Brant County Health Unit	3	2	4,070	2,650.5
City of Hamilton Public Health Services	106	74	23,032	3,959.3

Public Health Unit Name	Change in cases August 28, 2021	Change in cases August 29, 2021	Cumulative case count	Cumulative rate per 100,000 population
Haldimand-Norfolk Health Unit	4	1	2,785	2,320.7
Halton Region Public Health	26	16	18,077	2,960.7
Niagara Region Public Health	24	20	16,671	3,460.7
Region of Waterloo Public Health and Emergency Services	29	14	18,918	3,125.7
Wellington-Dufferin-Guelph Public Health	15	13	8,562	2,744.3
TOTAL CENTRAL WEST	207	140	92,115	3,215.4
TOTAL ONTARIO	740	694	565,025	3,834.8

Notes: Health units with data corrections or updates could result in records being removed from totals, leading to negative or zero counts.

Data Source: CCM

Outbreaks

Table 5. Summary of recent confirmed COVID-19 outbreaks reported in long-term care homes, retirement homes and hospitals by status: Ontario

Institution type	Change in outbreaks August 28, 2021	Change in outbreaks August 29, 2021	Number of ongoing outbreaks	Cumulative number of outbreaks reported
Long-term care homes	1	0	7	1,501
Retirement homes	0	0	5	879
Hospitals	0	0	4	587

Note: Ongoing outbreaks include all outbreaks that are 'Open' in CCM without a 'Declared Over Date' recorded, or where the outbreak started more than five months ago, even for outbreaks where the Outbreak Status value selected in CCM is 'OPEN'. The start of the outbreak is determined by the onset date of first case, or if missing the outbreak reported date, or else if that is also missing, then the outbreak created date.

Data Source: CCM

Variant COVID-19 Cases

The laboratory detection of a variant of concern (VOC) is a multi-step process. Samples that test positive for SARS-CoV-2 and have a cycle threshold (Ct) value ≤ 35 can be tested for mutations common to variants of concern. If positive for the mutation of interest with a Ct value of ≤ 30 , these samples may then undergo genomic analyses to identify the VOC lineage. VOC lineages may still be confirmed using genomic analysis despite specific S gene mutation(s) being documented as 'unable to complete' due to poor sequence quality at the genome position. For more information about whole genome sequencing, please see the [SARS CoV-2 Whole Genome Sequencing in Ontario report](#).

Table 6. Summary of confirmed COVID-19 cases with a mutation or VOC detected: Ontario

	Change in cases August 28, 2021	Change in cases August 29, 2021	Cumulative case count up to August 29, 2021
Variant of Concern			
Lineage B.1.1.7 (Alpha)*	97	1	146,329
Lineage B.1.351 (Beta)**	0	0	1,500
Lineage P.1 (Gamma) ***	0	0	5,222
Lineage B.1.617.2 (Delta)†	136	569	9,699
Mutations			
N501Y and E484K	5	3	4,429
N501Y (E484K unknown)‡	-99	0	12,397
E484K (N501Y negative)	4	-2	5,902
E484K (N501Y unknown)	0	0	435
Mutation not detected§	412	68	21,404

Note: Interpret the VOC and mutation trends with caution due to the varying time required to complete VOC testing and/or genomic analysis following the initial positive test for SARS-CoV-2. Due to the nature of the genomic analysis, test results may be completed in batches. Data corrections or updates can result in case records being removed and/or updated and may result in totals differing from past publicly reported case counts. Data for calculating the change in cases and the cumulative case counts uses data from the Investigation Subtype field only. Changes to the VOC testing algorithm may impact counts and trends. Further details can be found in the [data caveats](#) section.

*Includes all confirmed COVID-19 cases where lineage B.1.1.7 was identified by genomic analysis and those presumed to be B.1.1.7 based on positive N501Y and negative E484K mutation in the Investigation Subtype field

**Includes B.1.351 cases identified by genomic analysis and those presumed to be B.1.351 based on 'Mutation K417N+ and N501Y+ and E484K+' in the Investigation Subtype field

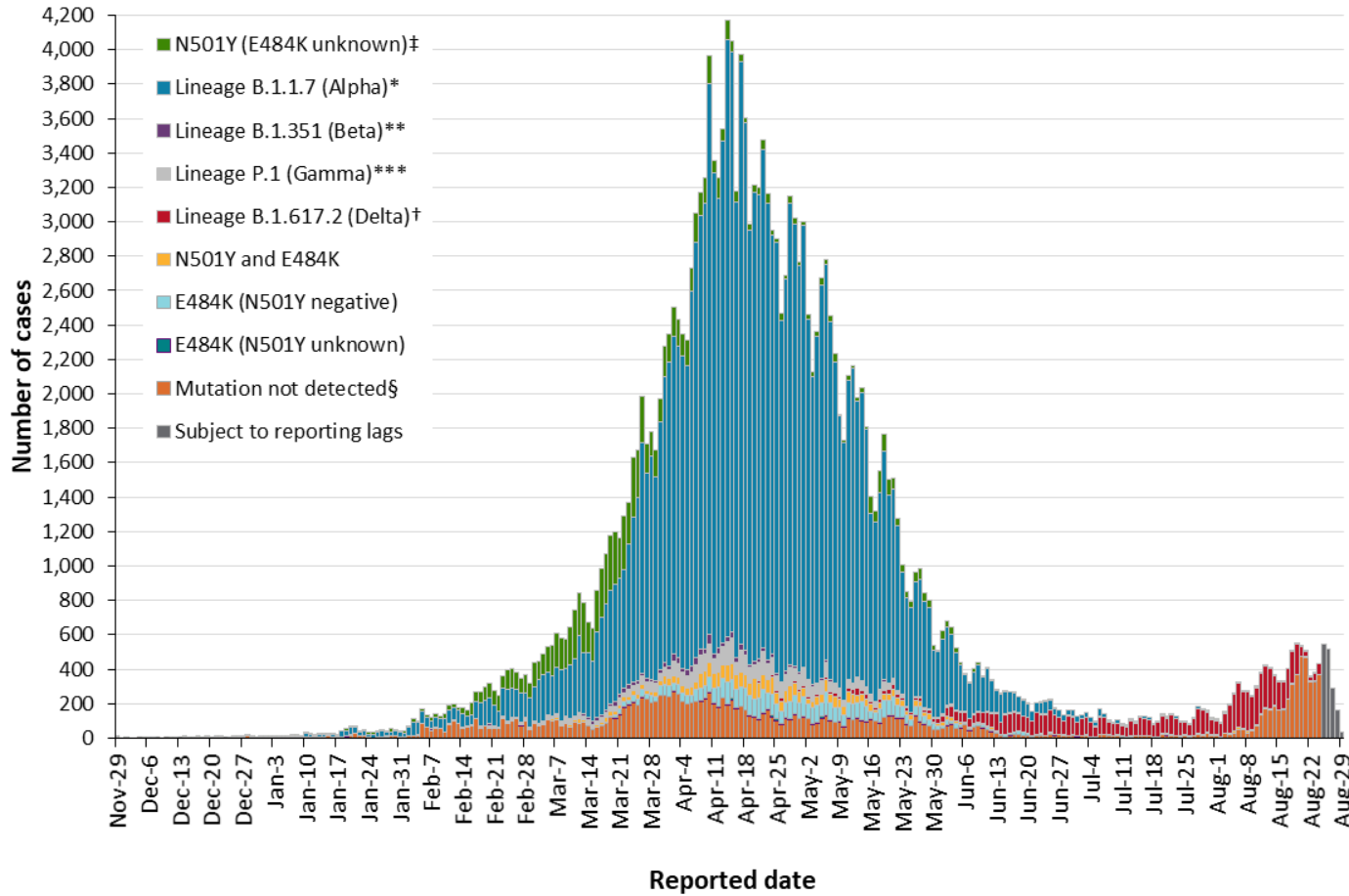
***Includes P.1 cases identified by genomic analysis and those presumed to be P.1 based on 'Mutation K417T+ and N501Y+ and E484K+' in the Investigation Subtype field

†Includes B.1.617.2 and AY.3 cases identified by genomic analysis. Mutations common to B.1.617.2 are not included in the current VOC mutation test.

‡The category 'N501Y (E484K unknown)' mainly consists of results from before the introduction of the E484K test. Counts will shift from this category into a VOC lineage category as E484K tests or genomic analysis are completed.
§Includes cases identified as 'Mutation not detected' or 'Mutation N501Y- and E484K-' in the Investigation Subtype field only.

Data Source: CCM

Figure 5. Confirmed COVID-19 cases with a mutation or VOC detected by public health unit reported date: Ontario, November 29, 2020 to August 29, 2021



Note: Reported date is based on the date the case was reported, not the date that the VOC or mutation was identified. Further details on testing for variants of concern can be found in the [technical notes](#). Interpret the VOC and mutation trends with caution due to the varying time required to complete testing and/or genomic analysis following the initial positive test for SARS-CoV-2. Data for calculating the change in cases and the cumulative case count uses data from the Investigation Subtype field only. Data for cases with a B.1.1.7, B.1.351, P.1 and B.1.617.2 lineage detected or any of the mutations listed above are determined using the

Investigation Subtype field only. Changes to the VOC testing algorithm may impact counts and trends. Further details can be found in the [data caveats](#) section. As of March 22, 2021, positive specimens with a Ct \leq 35 are tested for both the N501Y and E484K mutation, with all E484K positive specimens with a Ct \leq 30 forwarded for further genomic analysis. If found to be positive for the N501Y mutation only, no further genomic analysis are performed as these are presumed to be B.1.1.7. As of May 26, 2021, cases where an E484K mutation is detected will no longer be reflexed for sequencing as VOC testing labs switched to a representative sampling method where only a proportion of all positives with a Ct \leq 30 are forwarded for further genomic analysis.

*Includes all confirmed COVID-19 cases where lineage B.1.1.7 was identified by genomic analysis and those presumed to be B.1.1.7 based on positive N501Y and negative E484K mutation in the Investigation Subtype field

**Includes B.1.351 cases identified by genomic analysis and those presumed to be B.1.351 based on 'Mutation K417N+ and N501Y+ and E484K+' in the Investigation Subtype field

***Includes P.1 cases identified by genomic analysis and those presumed to be P.1 based on 'Mutation K417T+ and N501Y+ and E484K+' in the Investigation Subtype field

†Includes B.1.617.2 and AY.3 cases identified by genomic analysis. Mutations common to B.1.617.2 are not included in the current VOC mutation test.

‡The category 'N501Y (E484K unknown)' mainly consists of results from before the introduction of the E484K test. Counts will shift from this category into a VOC lineage category as E484K tests or genomic analysis are completed.

§Includes cases identified as 'Mutation not detected' or 'Mutation N501Y- and E484K-' in the Investigation Subtype field only.

Data Source: CCM

Technical Notes

Data Sources

- The data for this report were based on information successfully extracted from the Public Health Case and Contact Management Solution (CCM) for all PHUs by PHO as of **August 29, 2021 at 1 p.m.** for cases reported from February 1, 2021 onwards and as of **August 26, 2021 at 9 a.m.** for cases reported up to January 31, 2021.
- VOC data for this report were based on information successfully extracted from CCM for all PHUs by PHO as of **August 29, 2021 at 1 p.m.** for cases reported from April 1, 2021 onwards and as of **August 26, 2021 at 9 a.m.** for cases reported up to March 31, 2021.
- CCM is a dynamic disease reporting system, which allows ongoing updates to data previously entered. As a result, data extracted from CCM represent a snapshot at the time of extraction and may differ from previous or subsequent reports.
- Ontario population estimate data were sourced from Statistics Canada. Population estimates 2001-2020: Table 1 annual population estimates by age and sex for July 1, 2001 to 2020, health regions, Ontario [unpublished data table]. Ottawa, ON: Government of Canada; 2021 [received April 22, 2021].
- COVID-19 test data were based on information from The Provincial COVID-19 Diagnostics Network, reported by member microbiology laboratories.

Data Caveats

- The data only represent cases reported to public health units and recorded in CCM. As a result, all counts will be subject to varying degrees of underreporting due to a variety of factors, such as disease awareness and medical care seeking behaviours, which may depend on severity of illness, clinical practice, changes in laboratory testing, and reporting behaviours.
- Data cleaning for older cases is incorporated on Mondays and may impact the case count published on Tuesdays
- Lags in CCM data entry due to weekend staffing may result in lower case counts than would otherwise be recorded.
- Only cases meeting the confirmed case classification as listed in the [MOH Case Definition – Coronavirus Disease \(COVID-19\) document](#) are included in the report counts from CCM
- Cases of confirmed reinfection, as defined in the provincial case definitions, are counted as unique investigations.
- Case classification information may be updated for individuals with a positive result issued from a point-of-care assays.

- The number of tests performed does not reflect the number of specimens or persons tested. More than one test may be performed per specimen or per person. As such, the percentage of tests that were positive does not necessarily translate to the number of specimens or persons testing positive.
- Reported date is the date the case was reported to the public health unit.
- Case episode date represents an estimate of disease onset. This date is calculated based on the earliest date of symptom onset, specimen collection/test date, or the date reported to the public health unit.
- Resolved cases are determined only for COVID-19 cases that have not died. Cases that have died are considered fatal and not resolved. The following cases are classified as resolved:
 - Cases that are reported as 'recovered' in CCM
 - Cases that are not hospitalized and are 14 days past their episode date
 - Cases that are currently hospitalized (no hospital end date entered) and have a status of 'closed' in CCM (indicating public health unit follow-up is complete) and are 14 days past their symptom onset date or specimen collection date
- Hospitalization includes all cases for which a hospital admission date was reported or hospitalization/ICU was reported as 'Yes' at the time of data extraction. It includes cases that have been discharged from hospital as well as cases that are currently hospitalized. Emergency room visits are not included in the number of reported hospitalizations.
- ICU admission includes all cases for which an ICU admission date was reported at the time of data extraction. It is a subset of the count of hospitalized cases. It includes cases that have been treated or that are currently being treated in an ICU.
- Orientation of case counts by geography is based on the permanent health unit. This is equivalent to the diagnosing health unit (DHU) in iPHIS. DHU refers to the case's public health unit of residence at the time of illness onset and not necessarily the location of exposure. Cases for which the DHU was reported as MOH-PHO (to signify a case that is not a resident of Ontario) have been excluded from the analyses.
- Likely source of acquisition is determined by examining the epidemiologic link and epidemiologic link status fields in CCM. If no epidemiologic link is identified in those fields the risk factor fields are examined to determine whether a case travelled, was associated with a confirmed outbreak, was a contact of a case, had no known epidemiological link (sporadic community transmission) or was reported to have an unknown source/no information was reported. Some cases may have no information reported if the case is untraceable, was lost to follow-up or referred to FNIHB. Cases with multiple risk factors were assigned to a single likely acquisition source group which was determined hierarchically in the following order:
 - For cases with an episode date *on or after* April 1, 2020: Outbreak-associated > close contact of a confirmed case > travel > no known epidemiological link > information missing or unknown

- For cases with an episode date *before* April 1, 2020: Travel > outbreak-associated > close contact of a confirmed case > no known epidemiological link > information missing or unknown
- Deaths are determined by using the outcome field in CCM. Any case marked 'Fatal' is included in the deaths data. The CCM field Type of Death is not used to further categorize the data.
 - The date of death is determined using the outcome date field for cases marked as 'Fatal' in the outcome field.
- COVID-19 cases from CCM for which the Classification and/or Disposition was reported as ENTERED IN ERROR, DOES NOT MEET DEFINITION, IGNORE, DUPLICATE or any variation on these values have been excluded. The provincial case count for COVID-19 may include some duplicate records, if these records were not identified and resolved.
- Ongoing outbreaks include all outbreaks that are 'Open' in CCM without a 'Declared Over Date' recorded, or where the outbreak started more than five months ago, even for outbreaks where the Outbreak Status value selected in CCM is 'OPEN'. The start of the outbreak is determined by the onset date of first case, or if missing the outbreak reported date, or else if that is also missing, then the outbreak created date.
- 'Long-term care home residents' includes cases that reported 'Yes' to the risk factor 'Resident of a long-term care home'; or 'Yes' to the risk factor 'Resident of nursing home or other chronic care facility' and reported to be part of an outbreak assigned as a long-term care home (via the Outbreak number or case comments field); or were reported to be part of an outbreak assigned as a long-term care home (via the outbreak number or case comments field) with an age over 70 years and did not report 'No' to the risk factors 'Resident of long-term care home' or 'Resident of nursing home or other chronic care facility'. 'Long-term care home residents' excludes cases that reported 'Yes' to any of the health care worker occupational risk factors.
- The 'health care workers' variable includes cases that reported 'Yes' to any of the occupation of health care worker, doctor, nurse, dentist, dental hygienist, midwife, other medical technicians, personal support worker, respiratory therapist, first responder.
- 'Health care workers associated with long-term care outbreaks' includes 'health care workers' reported to be part of an outbreak assigned as a long-term care home (via the outbreak number or case comments field). Excludes cases that reported 'Yes' to risk factors 'Resident of long-term care home' or 'Resident of nursing home or other chronic care facility' and 'Yes' to the calculated 'health care workers' variable.
- Percent change is calculated by taking the difference between the current period (i.e., daily count or sum of the daily count over a 7-day period) and previous period (i.e., daily count or sum of the daily count over a 7-day period), divided by the previous period.

Appendix A

Table A1. Weekly rates of confirmed COVID-19 cases per 100,000 population over recent rolling 7-day periods, by reported date and public health unit: Ontario, August 14 to August 26, 2021

Public Health Unit Name	August 14 to August 20	August 15 to August 21	August 16 to August 22	August 17 to August 23	August 18 to August 24	August 19 to August 25	August 20 to August 26	% change from August 14 - August 20 to August 20 - August 26
NORTH WEST								
Northwestern Health Unit	3.7	3.7	4.9	3.7	8.6	7.4	7.4	+100.0%
Thunder Bay District Health Unit	3.2	3.8	3.8	1.9	1.9	1.9	3.2	0.0%
NORTH EAST								
Algoma Public Health	8.5	9.3	9.3	9.3	11.9	8.5	8.5	0.0%
North Bay Parry Sound District Health Unit	0.0	2.3	2.3	3.1	3.9	6.2	6.2	N/A
Porcupine Health Unit	5.9	7.1	7.1	5.9	5.9	7.1	7.1	+20.3%
Public Health Sudbury & Districts	12.7	14.6	13.6	13.2	13.6	14.6	15.1	+18.9%
Timiskaming Health Unit	0.0	0.0	0.0	0.0	0.0	0.0	0.0	0.0%
EASTERN								
Ottawa Public Health	11.7	12.8	13.6	13.1	13.9	14.3	16.5	+41.0%
Eastern Ontario Health Unit	6.9	7.9	9.3	9.3	9.7	14.8	19.0	+175.4%

Public Health Unit Name	August 14 to August 20	August 15 to August 21	August 16 to August 22	August 17 to August 23	August 18 to August 24	August 19 to August 25	August 20 to August 26	% change from August 14 - August 20 to August 20 - August 26
Hastings Prince Edward Public Health	17.9	17.9	19.7	19.1	16.2	16.2	16.2	-9.5%
Kingston, Frontenac and Lennox & Addington Public Health	4.3	5.3	5.3	5.3	5.3	4.8	3.8	-11.6%
Leeds, Grenville & Lanark District Health Unit	7.8	5.6	5.0	5.0	4.4	6.1	3.3	-57.7%
Renfrew County and District Health Unit	0.9	0.9	0.9	0.9	0.9	0.0	0.9	0.0%
CENTRAL EAST								
Durham Region Health Department	24.2	26.0	26.8	27.6	26.8	30.5	31.8	+31.4%
Haliburton, Kawartha, Pine Ridge District Health Unit	12.1	13.6	13.6	13.1	12.1	9.4	9.4	-22.3%
Peel Public Health	32.6	35.2	34.7	36.5	36.1	36.8	38.7	+18.7%
Peterborough Public Health	8.8	9.5	10.8	10.8	11.5	8.8	9.5	+8.0%
Simcoe Muskoka District Health Unit	19.9	22.2	23.8	24.0	24.3	23.8	26.0	+30.7%
York Region Public Health	35.2	37.3	38.5	40.6	43.5	45.7	48.1	+36.6%
TORONTO								
Toronto Public Health	30.6	31.0	30.3	31.1	32.2	32.6	33.6	+9.8%

Public Health Unit Name	August 14 to August 20	August 15 to August 21	August 16 to August 22	August 17 to August 23	August 18 to August 24	August 19 to August 25	August 20 to August 26	% change from August 14 - August 20 to August 20 - August 26
SOUTH WEST								
Chatham-Kent Public Health	24.4	24.4	20.6	25.3	32.8	30.0	30.0	+23.0%
Grey Bruce Health Unit	12.5	14.8	15.9	13.1	13.6	11.9	11.9	-4.8%
Huron Perth Public Health	18.5	13.0	15.7	14.4	15.0	15.0	16.4	-11.4%
Lambton Public Health	14.3	12.0	13.5	14.3	12.8	14.3	14.3	0.0%
Middlesex-London Health Unit	35.4	38.2	40.5	40.3	41.5	43.3	39.8	+12.4%
Southwestern Public Health	13.2	13.2	12.8	12.3	12.8	12.8	11.9	-9.8%
Windsor-Essex County Health Unit	87.9	91.2	87.3	82.4	86.6	94.0	98.6	+12.2%
CENTRAL WEST								
Brant County Health Unit	34.5	38.4	39.7	35.8	33.9	33.9	31.3	-9.3%
City of Hamilton Public Health Services	64.6	67.6	70.7	75.6	78.9	82.5	87.7	+35.8%
Haldimand-Norfolk Health Unit	20.0	23.3	23.3	21.7	19.2	23.3	22.5	+12.5%
Halton Region Public Health	23.4	22.8	23.6	23.6	22.9	22.1	20.5	-12.4%
Niagara Region Public Health	21.4	20.1	21.2	18.9	20.1	21.8	23.5	+9.8%

Public Health Unit Name	August 14 to August 20	August 15 to August 21	August 16 to August 22	August 17 to August 23	August 18 to August 24	August 19 to August 25	August 20 to August 26	% change from August 14 - August 20 to August 20 - August 26
Region of Waterloo Public Health and Emergency Services	20.7	20.5	19.3	20.3	21.0	22.1	22.3	+7.7%
Wellington-Dufferin-Guelph Public Health	14.4	17.0	17.9	21.2	22.1	23.4	24.4	+69.4%
TOTAL ONTARIO	26.9	28.1	28.4	28.9	29.7	30.8	31.9	+18.6%

Note: Rates are based on the sum of the daily case counts during the date ranges specified in each column.

Data Source: CCM

Table A2. Summary of confirmed COVID-19 cases with a mutation or VOC by public health unit: Ontario as of August 29, 2021

Public Health Unit Name	Cumulative count for Lineage B.1.1.7 (Alpha)*	Cumulative count for Lineage B.1.351 (Beta)**	Cumulative count for Lineage P.1 (Gamma)***	Cumulative count for Lineage B.1.617.2 (Delta)†	Cumulative count for mutations‡
Algoma Public Health	68	0	14	6	26
Brant County Health Unit	670	2	97	108	496
Chatham-Kent Public Health	131	5	16	49	102
City of Hamilton Public Health Services	5,060	66	105	531	2,090
Durham Region Health Department	9,518	66	270	353	1,213
Eastern Ontario Health Unit	662	46	21	18	269
Grey Bruce Health Unit	310	0	6	554	54
Haldimand-Norfolk Health Unit	368	3	23	49	408
Haliburton, Kawartha, Pine Ridge District Health Unit	443	0	23	77	309
Halton Region Public Health	5,089	30	167	382	618
Hastings Prince Edward Public Health	111	0	18	31	393
Huron Perth Public Health	278	0	12	89	28
Kingston, Frontenac and Lennox & Addington Public Health	457	2	35	18	132
Lambton Public Health	438	0	18	70	126
Leeds, Grenville & Lanark District Health Unit	295	19	0	13	44

Public Health Unit Name	Cumulative count for Lineage B.1.1.7 (Alpha)*	Cumulative count for Lineage B.1.351 (Beta)**	Cumulative count for Lineage P.1 (Gamma)***	Cumulative count for Lineage B.1.617.2 (Delta)†	Cumulative count for mutations‡
Middlesex-London Health Unit	3,385	2	124	366	184
Niagara Region Public Health	4,285	4	20	95	1,103
North Bay Parry Sound District Health Unit	235	28	3	38	14
Northwestern Health Unit	59	0	1	9	16
Ottawa Public Health	6,845	515	55	250	465
Peel Public Health	31,181	161	1,774	1,371	2,839
Peterborough Public Health	630	4	8	34	161
Porcupine Health Unit	1,109	2	0	54	8
Public Health Sudbury & Districts	691	13	10	24	268
Region of Waterloo Public Health and Emergency Services	3,125	21	98	1,537	262
Renfrew County and District Health Unit	232	8	7	7	12
Simcoe Muskoka District Health Unit	3,913	35	173	258	772
Southwestern Public Health	684	3	21	117	160
Thunder Bay District Health Unit	104	1	2	7	74
Timiskaming Health Unit	83	1	0	1	0
Toronto Public Health	46,061	375	1,522	1,961	7,469

Public Health Unit Name	Cumulative count for Lineage B.1.1.7 (Alpha)*	Cumulative count for Lineage B.1.351 (Beta)**	Cumulative count for Lineage P.1 (Gamma)***	Cumulative count for Lineage B.1.617.2 (Delta)†	Cumulative count for mutations‡
Wellington-Dufferin-Guelph Public Health	2,085	1	81	253	178
Windsor-Essex County Health Unit	1,852	8	19	279	139
York Region Public Health	15,872	79	479	690	2,731
TOTAL ONTARIO	146,329	1,500	5,222	9,699	23,163

Note: Interpret the VOC and mutation trends with caution due to the varying time required to complete VOC testing and/or genomic analysis following the initial positive test for SARS-CoV-2. Due to the nature of the genomic analysis, test results may be completed in batches. Data corrections or updates can result in case records being removed and/or updated and may result in totals differing from past publicly reported case counts. Data for calculating the change in cases and the cumulative case count uses data from the Investigation Subtype field only. Changes to the VOC testing algorithm may impact counts and trends. Further details can be found in the [data caveats](#) section.

*Includes all confirmed COVID-19 cases where lineage B.1.1.7 was identified by genomic analysis and those presumed to be B.1.1.7 based on positive N501Y and negative E484K mutation.

**Includes B.1.351 cases identified by genomic analysis and those presumed to be B.1.351 based on 'Mutation K417N+ and N501Y+ and E484K+' in the Investigation Subtype field

***Includes P.1 cases identified by genomic analysis and those presumed to be P.1 based on 'Mutation K417T+ and N501Y+ and E484K+' in the Investigation Subtype field

†Includes B.1.617.2 and AY.3 cases identified by genomic analysis. Mutations common to B.1.617.2 are not included in the current VOC mutation test.

‡Mutations includes all confirmed COVID-19 cases with the following mutations detected, reported from the Investigation Subtype field: N501Y and E484K, N501Y (E484K unknown), E484K (N501Y negative), E484K (N501Y unknown).

If a VOC is identified through genomic analysis, the change in cases and/or cumulative case counts for mutations will fluctuate as the case is moved to one of the listed lineages.

Data Source: CCM

Citation

Ontario Agency for Health Protection and Promotion (Public Health Ontario). Epidemiologic summary: COVID-19 in Ontario – January 15, 2020 to August 29, 2021. Toronto, ON: Queen’s Printer for Ontario; 2021.

Disclaimer

This document was developed by Public Health Ontario (PHO). PHO provides scientific and technical advice to Ontario’s government, public health organizations and health care providers. PHO’s work is guided by the current best available evidence at the time of publication. The application and use of this document is the responsibility of the user. PHO assumes no liability resulting from any such application or use. This document may be reproduced without permission for non-commercial purposes only and provided that appropriate credit is given to PHO. No changes and/or modifications may be made to this document without express written permission from PHO.

For Further Information

For more information, cd@oahpp.ca.

Public Health Ontario

Public Health Ontario is an agency of the Government of Ontario dedicated to protecting and promoting the health of all Ontarians and reducing inequities in health. Public Health Ontario links public health practitioners, front-line health workers and researchers to the best scientific intelligence and knowledge from around the world.

For more information about PHO, visit publichealthontario.ca.



©Queen’s Printer for Ontario, 2021