

Notes
 1. All coordinates are related to NAD83 CSRS(98) UTM Zone 17.
 2. Coordinate Tables are located at the end of the sheet series.
 3. Gaps in the sequence of "T" point numbers are intentional and do not indicate missing data.
 4. Survey instructions from the Surveyor General must be obtained prior to establishing any of the boundaries on the ground.
 5. Points labelled "P" are to be used for the purpose of producing a boundary segment to an intersection.
 6. Points labelled "T" define the beginning and end of boundary segments.

Source
 This plan was compiled from data sets supplied by the Natural Resources Values and Information System (NRVIS), Niagara Escarpment Commission and Land Information Ontario.
 Produced by: Office of the Surveyor General
CAUTION: THIS IS NOT A PLAN OF SURVEY
 DATE COMPLETED: FEBRUARY 2005

PLAN OF THE BOUNDARY OF THE PROTECTED COUNTRYSIDE

Legend

- Utility Lines
- Railway
- Rivers
- Freeway
- Highway
- Local Street
- Protected Countryside
- Water Bodies

0 100 300 500 1,000 2,000 Metres
 200 400 1:20,000

NOTE: Where necessary, all limits are extended to an intersection unless noted otherwise.

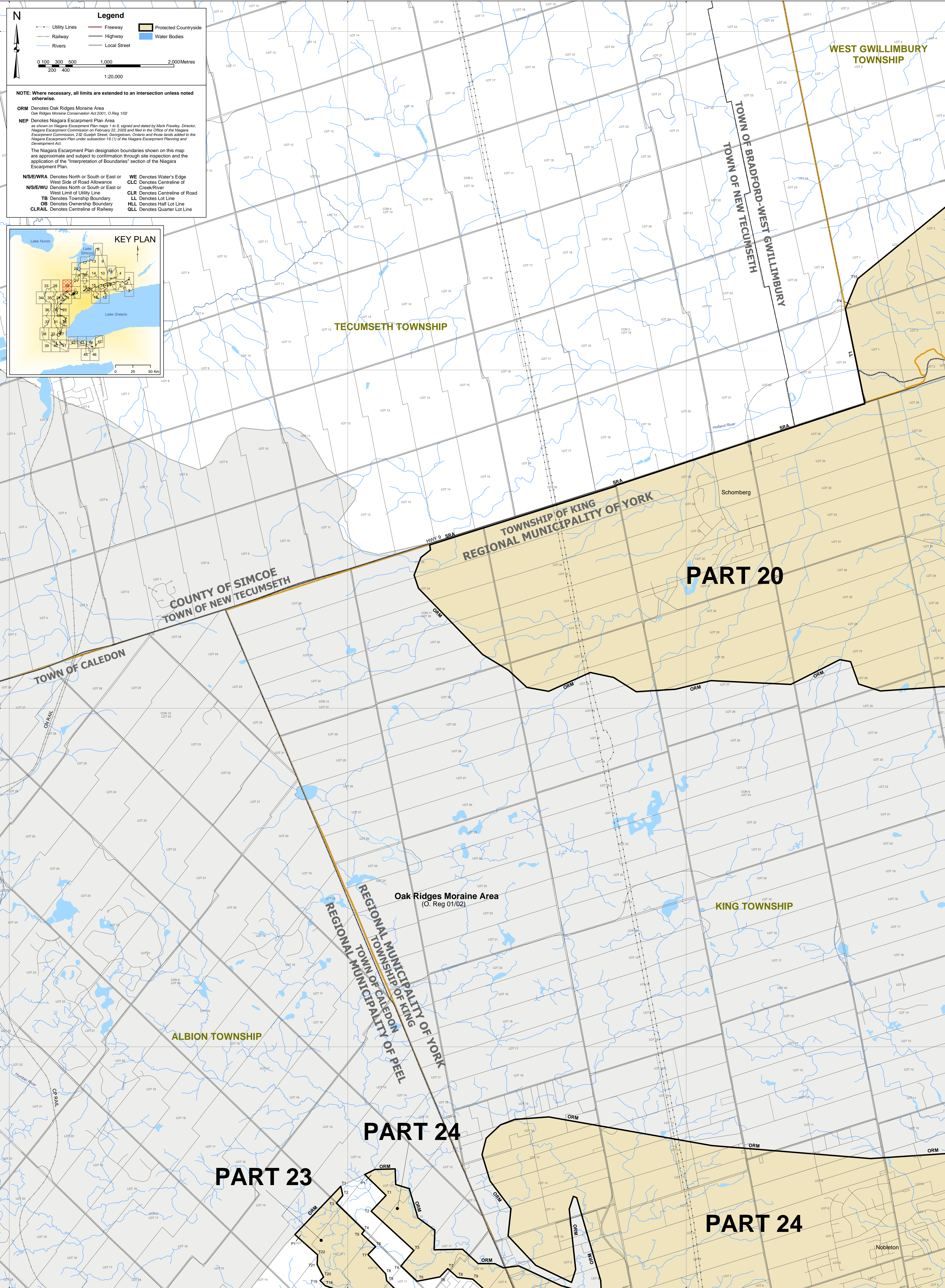
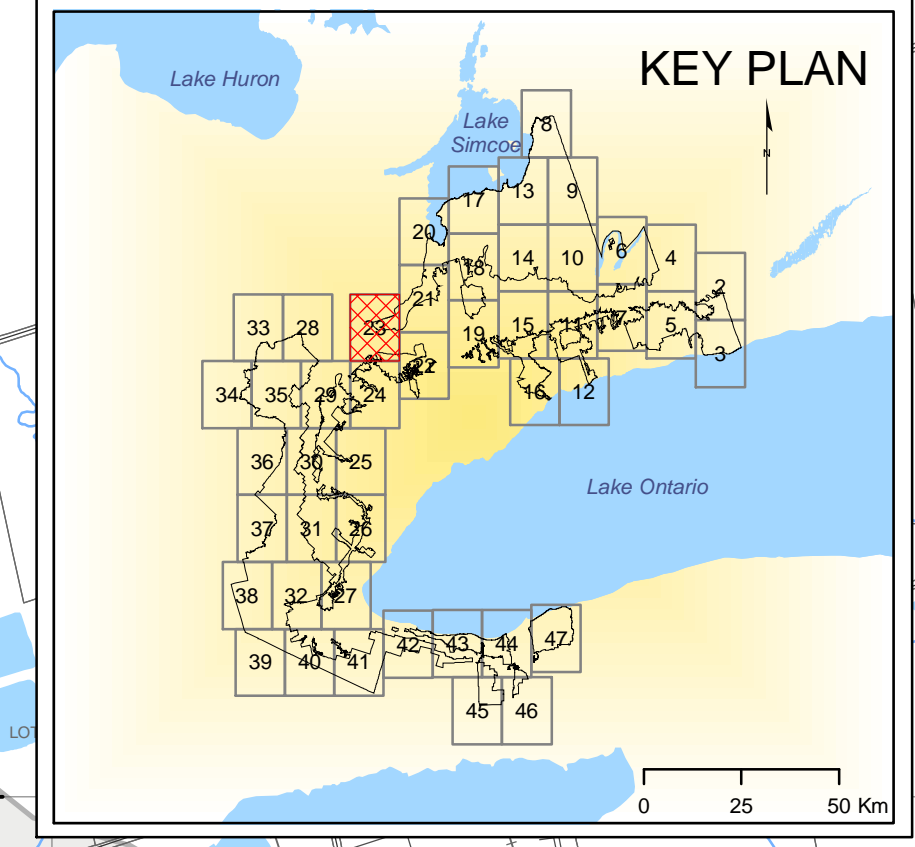
ORM Denotes Oak Ridges Moraine Area
 Oak Ridges Moraine Conservation Act 2001, O.Reg 1/02

NEP Denotes Niagara Escarpment Plan Area
 as shown on Niagara Escarpment Plan maps 1 to 9, signed and dated by Mark Frawley, Director, Niagara Escarpment Commission on February 22, 2005 and filed in the Office of the Niagara Escarpment Commission, 232 Queen Street, Georgetown, Ontario and those lands added to the Niagara Escarpment Plan under subsection 19 (1) of the Niagara Escarpment Planning and Development Act.

The Niagara Escarpment Plan designation boundaries shown on this map are approximate and subject to confirmation through site inspection and the application of the "Interpretation of Boundaries" section of the Niagara Escarpment Plan.

NS/E/WRA Denotes North or South or East or West Side of Road Allowance
NS/E/WU Denotes North or South or East or West Limit of Utility Line
TB Denotes Township Boundary
OB Denotes Ownership Boundary
CLRAIL Denotes Centreline of Railway

WE Denotes Water's Edge
CLC Denotes Centreline of Creek/River
GLR Denotes Centreline of Road
LL Denotes Lot Line
HLL Denotes Half Lot Line
QLL Denotes Quarter Lot Line



PART 20

PART 23

PART 24