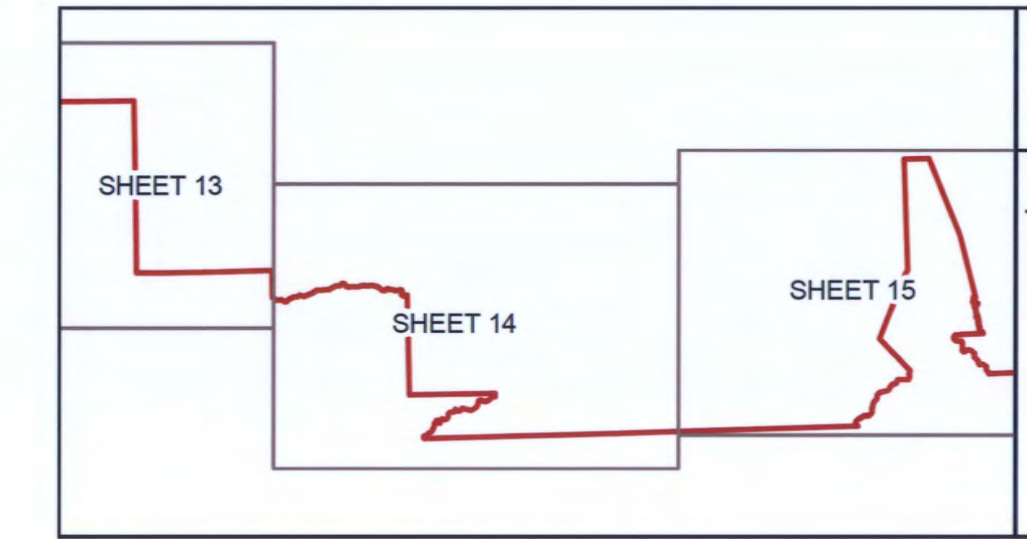
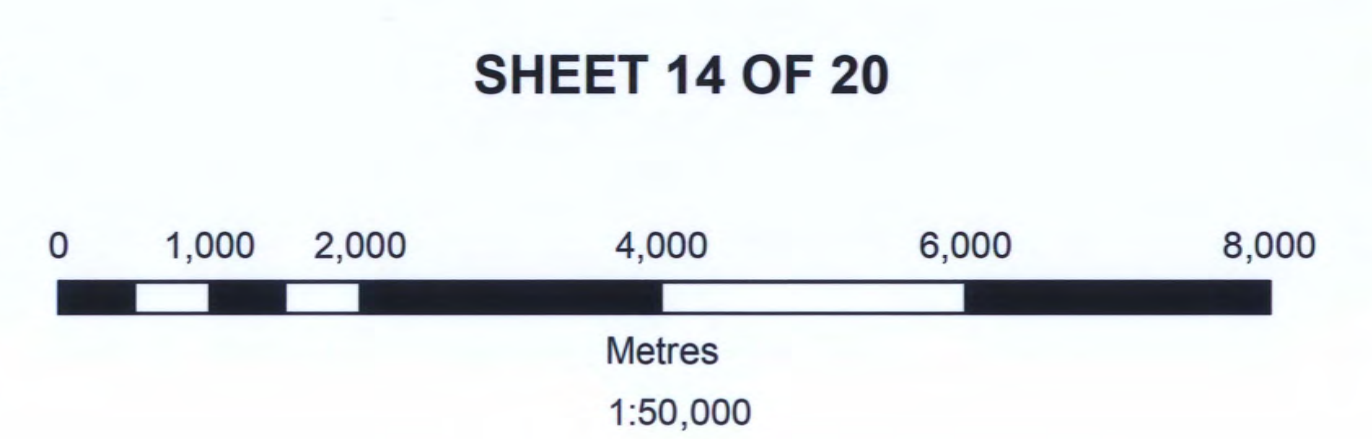


Regulation Plan of the Southerly Boundary of the Far North of Ontario

IN THE TERRITORIAL DISTRICTS OF KENORA, KENORA PATRICIA PORTION, THUNDER BAY & COCHRANE PROVINCE OF ONTARIO



ONT. REG. No. 2111
 SCHEDULE N/A
 CERTIFICATE OF SURVEYOR GENERAL
 I HEREBY CERTIFY THAT THIS PLAN HAS BEEN FILED WITH THE OFFICE OF THE SURVEYOR GENERAL OF ONTARIO IN THE MINISTRY OF NATURAL RESOURCES ON THE 24TH DAY OF JUNE 2009.
 B. MALONEY
 SURVEYOR GENERAL

| LEGEND | |
|--------|------------------------|
| | Far North Boundary |
| | Water |
| | Seasonal Water |
| | Forest Management Unit |
| | Wetland |
| | Conservation Reserve |

NOTES:
 1. THIS IS NOT A PLAN OF SURVEY. This map is illustrative only. Do not rely on it as being a precise indicator of routes, locations of features, nor as a guide for navigation.
 2. Survey Instructions from the Surveyor General of Ontario must be obtained prior to establishing any of the boundaries on the ground.
 3. Projection: NAD 83 UTM zone 16

DATA SOURCE:
 Land Information Ontario Warehouse (March 25 & 26, 2009)
 Metes & Bounds Description provided by MNR, Forests Division, Industry Relations Branch (April 23, 2009)
 Other information of record with the MNR

PRODUCED BY
 The Office of the Surveyor General (June 24, 2009)

Ontario
 Ministry of Natural Resources
 Queen's Printer for Ontario, 2009
 Far_North_z16_sheet14.mxd