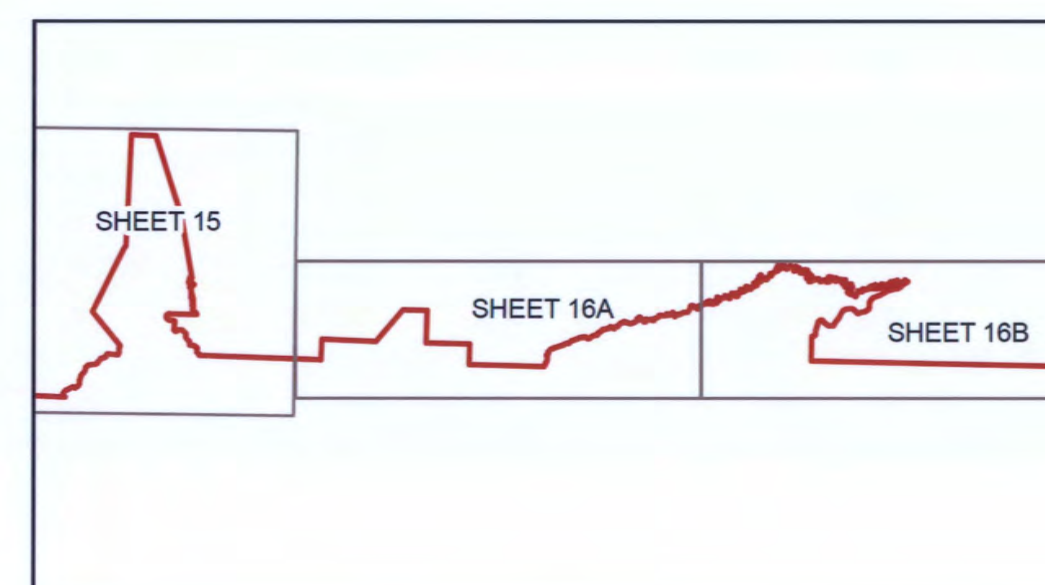
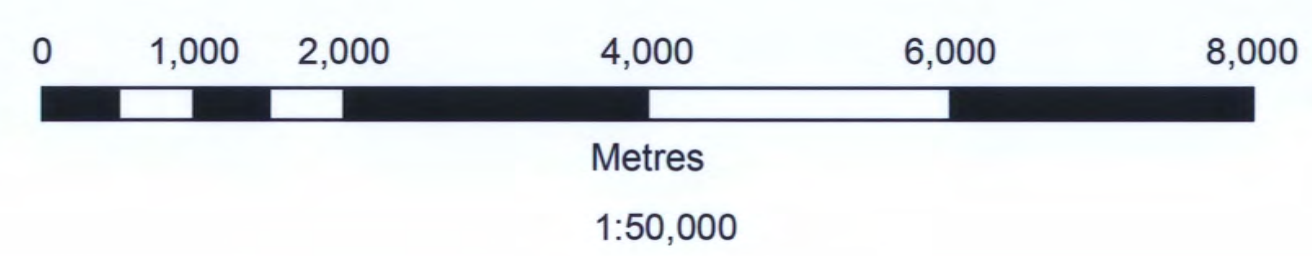
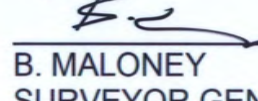


# Regulation Plan of the Southerly Boundary of the Far North of Ontario

IN THE TERRITORIAL DISTRICTS OF KENORA, KENORA  
PATRICIA PORTION, THUNDER BAY & COCHRANE  
PROVINCE OF ONTARIO


SHEET 16 OF 20



ONT. REG. No. 2111  
SCHEDULE N/A  
CERTIFICATE OF SURVEYOR GENERAL  
I HEREBY CERTIFY THAT THIS PLAN HAS BEEN FILED  
WITH THE OFFICE OF THE SURVEYOR GENERAL OF  
ONTARIO IN THE MINISTRY OF NATURAL RESOURCES  
ON THE 24<sup>TH</sup> DAY OF JUNE 2009.  
  
B. MALONEY  
SURVEYOR GENERAL

LEGEND	
	Far North Boundary
	Water
	Seasonal Water
	Forest Management Unit
	Wetland
	Geographic Township
	Provincial Park

NOTES:  
1. THIS IS NOT A PLAN OF SURVEY. This map is illustrative only. Do not rely on it as being a precise indicator of routes, locations of features, nor as a guide for navigation.  
2. Survey instructions from the Surveyor General of Ontario must be obtained prior to establishing any of the boundaries on the ground.  
3. Projection: NAD 83 UTM zone 17

DATA SOURCE:  
Land Information Ontario Warehouse (March 25 & 26, 2009)  
Metes & Bounds Description provided by  
MNR, Forests Division, Industry Relations Branch (April 23, 2009)  
Other information of record with the MNR  
PRODUCED BY  
The Office of the Surveyor General (June 24, 2009)  
 Ministry of  
Natural Resources  
© Queen's Printer for Ontario, 2009  
Far\_North\_z17\_sheet16.mxd