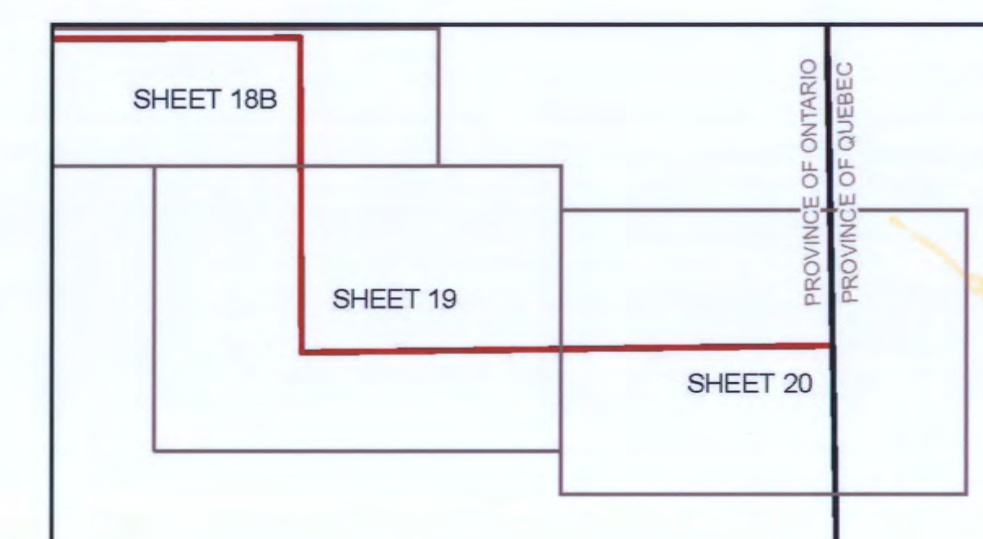
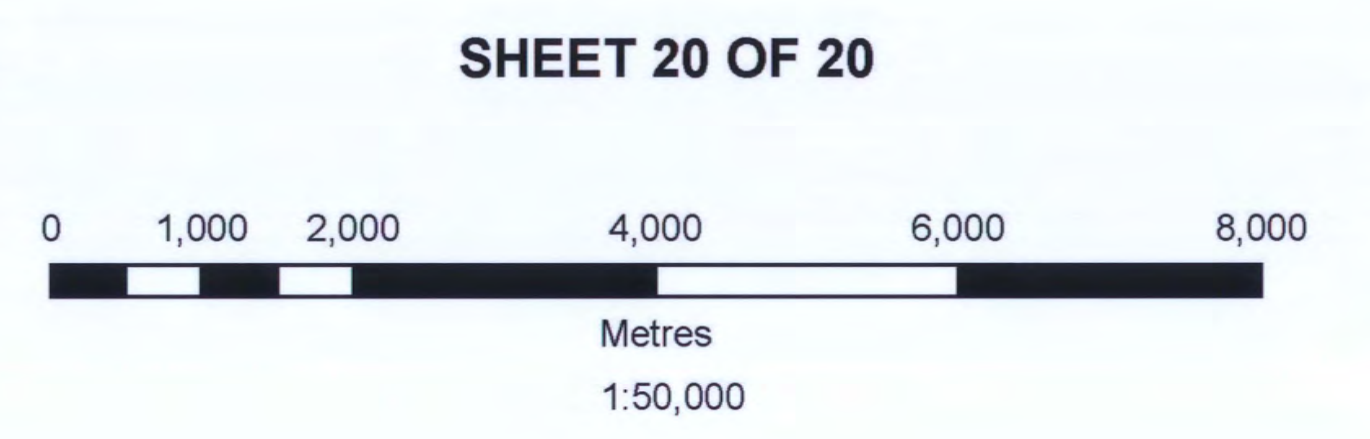


Regulation Plan of the Southerly Boundary of the Far North of Ontario

IN THE TERRITORIAL DISTRICTS OF KENORA, KENORA
PATRICIA PORTION, THUNDER BAY & COCHRANE
PROVINCE OF ONTARIO



ONT. REG. No. 2111
SCHEDULE N/A

CERTIFICATE OF SURVEYOR GENERAL
I HEREBY CERTIFY THAT THIS PLAN HAS BEEN FILED
WITH THE OFFICE OF THE SURVEYOR GENERAL OF
ONTARIO IN THE MINISTRY OF NATURAL RESOURCES
ON THE 24th DAY OF JUNE 2009.

B. Maloney
B. MALONEY
SURVEYOR GENERAL

LEGEND

Far North Boundary	Water
Forest Management Unit	Seasonal Water
Road	Wetland
province	

NOTES:

1. THIS IS NOT A PLAN OF SURVEY. This map is illustrative only. Do not rely on it as being a precise indicator of routes, locations of features, nor as a guide for navigation.
2. Survey instructions from the Surveyor General of Ontario must be obtained prior to establishing any of the boundaries on the ground.
3. Projection: NAD 83 UTM zone 17

DATA SOURCE:
Land Information Ontario Warehouse (March 25 & 26, 2009)
Metes & Bounds Description provided by
MNR, Forests Division, Industry Relations Branch (April 23, 2009)
Other information of record with the MNR

PRODUCED BY
The Office of the Surveyor General (June 24, 2009)

Ministry of
Ontario Natural Resources
Queen's Printer for Ontario, 2009
Far_North_z17_sheet20.mxd