

# Pinard Moraine Conservation Reserve (C1582)

Statement of  
Conservation Interest



November 2004  
Cochrane District  
Ministry of Natural Resources

**Cochrane District  
Ministry of Natural Resources**

**APPROVAL STATEMENT**

I am pleased to approve this Statement of Conservation Interest (SCI) for the Pinard Moraine Conservation Reserve.

Direction for establishing, planning and managing conservation reserves is defined under the *Public Lands Act*, the *Ontario's Living Legacy Land Use Strategy*, and other applicable policies. The specific direction for managing this conservation reserve is in the form of a basic SCI, which defines the area to which the plan applies, provides the purpose for which the conservation reserve has been proposed, and outlines the Ministry of Natural Resources' management intent for the protected area. This SCI has been created with input from program specialists within Cochrane District. It will provide both the foundation for continued monitoring of activities and guidance for managing the conservation reserve. More detailed direction at this time is not anticipated. However, should significant facility development be considered or complex issues arise requiring additional studies, more detailed management direction in the form of special protection measures, or a detailed Resource Management Plan, will be prepared with full public consultation.

This SCI will provide guidance for the management of the conservation reserve and the basis for the ongoing monitoring of activities. More detailed direction at this time is not anticipated. Should significant facility development be considered or complex issues arise requiring additional studies, more defined management direction, or special protection measures, a more detailed Conservation Reserve Management Plan will be prepared with full public consultation.

Public and Aboriginal consultation occurred prior to the regulation of this conservation reserve. Comments from the notification period have been considered in the development of this document.

The conservation reserve will be managed under the jurisdiction of the Cochrane Area Supervisor of the Ministry of Natural Resources, Cochrane District.

Plan Author: Jennifer Telford  
Resource Planner  
Cochrane District

Approved by: Ed Tear, District Manager: Original Signed by Ed Tear

Date: March 15, 2005

Approved by: Rob Galloway, Regional Director: Original signed by Rob Galloway

Date: April 10, 2005

<b>Table of Contents</b>	<b>Page</b>
<b>1.0 Introduction</b>	5
<b>2.0 Goals and Objectives</b>	6
2.1 Goals and SCI	6
2.2 Objectives of the SCI	6
2.2.1 Short Term Objectives	6
2.2.2 Long Term Objectives	6
<b>3.0 Management Planning</b>	6
3.1 Planning Area	6
3.2 Management Planning Context	7
3.3 Planning Process	8
<b>4.0 Background Information</b>	10
4.1 Location and Site Description	10
4.1.1 Location	10
4.1.2 Site Description	10
4.1.2.1 Physical Description	10
4.2 Administrative Description	11
4.3 History of Site	11
4.4 Inventories	11
<b>5.0 State of the Resource</b>	11
5.1 Social/Economic Interest in the Area	14
5.2 Natural Heritage Stewardship	16
5.3 Fish and Wildlife	16
5.4 Cultural Heritage Stewardship	16
5.5 Land Use/Existing Development	17
5.6 Commercial Use	17
5.7 Tourism/Recreation Use/Opportunities	17
5.8 Client Services	18
<b>6.0 Management Guidelines</b>	18
6.1 Management Planning Strategies	18
6.2 “State of the Resource” Management Strategies	18
6.3 Specific Feature/Area/Zone Management Strategies	22
6.4 Promote Inventory, Monitoring and Assessment Reporting (IMAR), and Research	23
6.5 Implementation, and Plan Review Strategies	23
6.6 Marketing Strategies	24
6.7 Boundary Identification	24
<b>7.0 References</b>	24

<b>List of Figures</b>	<b>Page</b>
Figure 1.0	7
Figure 2.0	9
Figure 3.0	15

**List of Tables**

Table 1: Location Data	10
Table 2: Inventory Data	11

**List of Appendices**

- #1 Recreational Inventory Check Sheet
- #2 Procedural Guideline B – Land Uses – Test of Compatibility (PL 3.03.03)
- #3 Procedural Guideline C – Research Activities in Conservation Reserves
- #4 Crown Land Use Atlas – Policy Report
- #5 Natural Heritage - Life Science Checksheet
  - Map 1a: Surficial Geology Map
  - Map 1b: Landforms Map
  - Map 2a: Forest Communities Map
  - Map 2b: Tree Stocking Distribution Map
  - Map 2c: Tree Age Distribution Map
  - Map 2d: Standard Forest Units Map
  - Map 3a: Land Use Values Map
  - Map 3b: Wetlands Map
  - Map 4: Data Gathering Map
  - Map 5: Old Growth Map
  - Map 6: Landform Vegetation Combinations Map
  - Map 7: Fire Disturbance Map
  - Map 8: History Map
- #6 Earth Science Planning Summary – Pinard Moraine (C1582)

## 1.0 INTRODUCTION

Ontario's network of natural heritage areas has been established to protect and conserve areas representative of the diversity of the natural regions of the province, including species, habitats, features and ecological systems which comprise that natural diversity. Protected natural heritage areas are a key component in sustainable management of natural resources. They ensure that representative sites within the larger sustainable managed landscape are permanently retained in their natural state.

Natural Heritage areas are considered to be sensitive, requiring protection from incompatible activities if their values are to endure over time. The Ministry of Natural Resources (MNR) has established conservation reserves as a new tool to offer protection for these areas on public lands, while permitting many traditional public lands uses to continue. Such uses include the traditional activities of Aboriginal Peoples.

Ontario's Living Legacy Land Use Strategy (*OLL LUS*) (OMNR 1999) as well as the Crown Land Use Policy Atlas sets the direction for the administration and management of parks and protected areas on Crown lands within three planning regions including; the Boreal West, Boreal East and Great Lakes – St. Lawrence areas. This strategy's natural heritage objectives include protection of natural and cultural heritage values and the provision of opportunities for outdoor recreation, heritage appreciation and tourism (OMNR 1999).

Protected areas designated within the *OLL LUS* have been selected based on their representation of the spectrum of the province's ecosystems and natural features including both biological and geological features, while minimizing impacts on other land uses. Representation was described using landform and vegetation combinations based on Hill's (1959) ecodistrict concept.

The Pinard Moraine Conservation Reserve is an 18,201 ha parcel of crown land that is situated approximately 75 kilometres north of Smooth Rock Falls. It is found within the Townships of Hamlet, Parliament, Sheldon, Pinard and Trail. These townships are located in the Cochrane District within the MNR's Northeast Region. Public and Aboriginal consultation occurred prior to the regulation of this conservation reserve. The conservation reserve will be managed under a Statement of Conservation Interest (SCI).

SCI documents are the minimum level of management direction established for any conservation reserve and generally are brief management plans. This SCI will govern the lands and waters within the regulated boundary of the Pinard Moraine Conservation Reserve. However, to ensure MNR protection objectives are being fully met within the conservation reserve, the surrounding landscape and related activities should consider the site's objectives and heritage values. In

addition, it is the intent of the SCI to create public awareness that will promote responsible stewardship of protected areas and surrounding lands. With management partners such as Ontario Parks, industry and local governments, MNR District staff will be able to pursue and advance sound environmental, economic and social strategies and policies related to the protection of conservation reserves and provincial parks.

The purpose of this SCI is to identify and describe the values of the Pinard Moraine Conservation Reserve and outline the Ministry's management intent for the conservation reserve. The management direction will protect the site's natural heritage values and demonstrate its compatibility within the larger sustainable landscape. This direction will comply with land use intent as stated by the OLL Land Use Strategy (OMNR 1999).

## **2.0 GOALS AND OBJECTIVES**

### **2.1 Goal of Statement of Conservation Interest**

The goal of this SCI is to describe and protect natural heritage values on public lands while permitting compatible land use strategies.

### **2.2 Objectives of SCI**

#### **2.2.1 Short Term Objectives**

The short-term objectives are to identify the State of Resource with respect to natural heritage values and current land use activities for the Pinard Moraine Conservation Reserve. A priority will be placed on the protection of the site's natural values via specific guidelines, strategies and prescriptions detailed in this plan. Finally, legislated planning requirements will be met (e.g. SCI development within three years of regulation).

#### **2.2.2 Long Term Objectives**

The long-term objectives will be able to establish representative targets (e.g. future forest conditions) and validate the site as a potential scientific benchmark. To ensure protection of natural and cultural heritage features and values, this SCI will establish an evaluation process to address future new uses and commercial activities associated with them (e.g. Test of Compatibility Procedural Guideline B in Conservation Reserve Policy PL 3.03.05). Finally, this SCI will identify research/client services and marketing strategies.

### 3.0 MANAGEMENT PLANNING

#### 3.1 Planning Area

The planning area for this site will consist of the area within the regulated boundary for the Pinard Moraine Conservation Reserve. This landbase will form the area directly influenced by this SCI. The SCI will recognize the protection of values within the planning area; however, to fully protect values within the conservation reserve, the lands beyond the regulated boundary may require additional consideration within larger land use or resource management plans. Nevertheless, any strategies noted within this plan related to the site's boundary or beyond will need to be presented for consideration within a larger planning context.

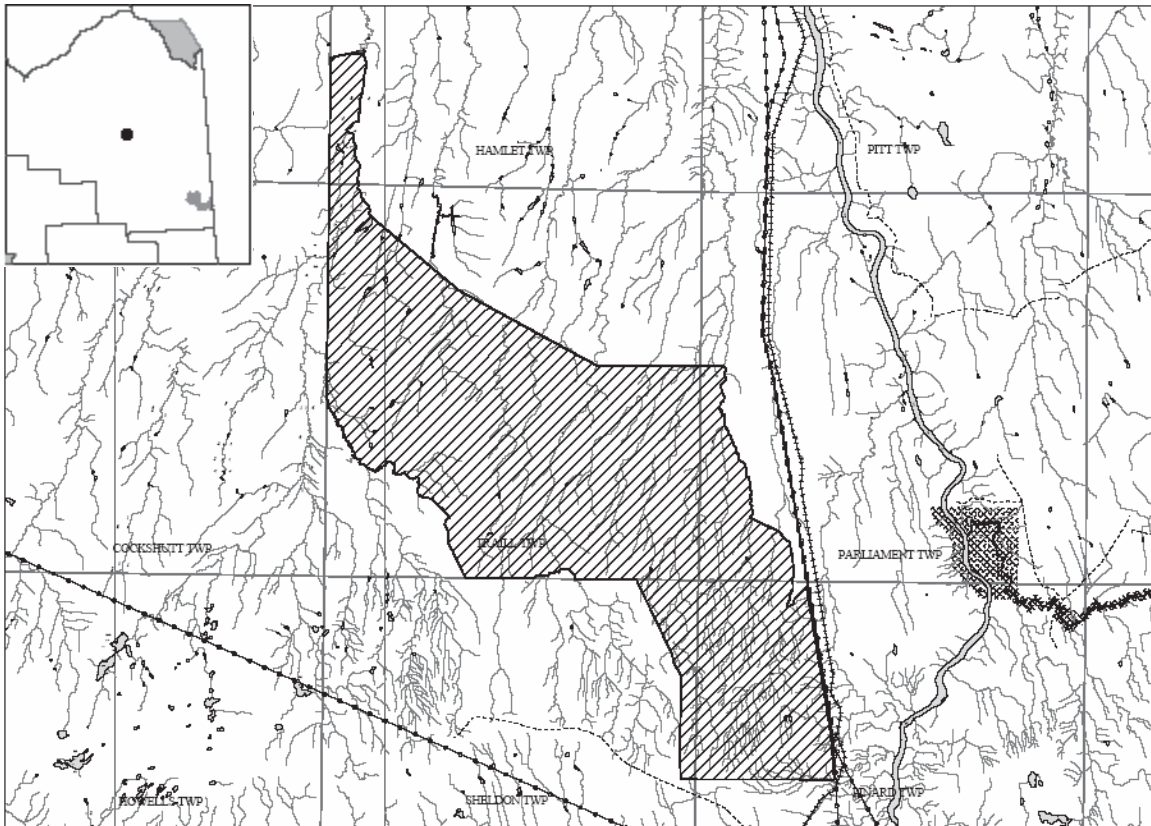


Figure 1: Pinard Moraine Conservation Reserve

#### 3.2 Management Planning Context

The Pinard Moraine Conservation Reserve was first designated as a candidate conservation reserve by MNR in the OLL Proposed Land Use Strategy (OMNR 1999) and ultimately as a conservation reserve in the final OLL Land Use Strategy (OMNR 1999). The site will be regulated with the filing of Ontario Regulation 86/01 made under the Public Lands Act. Management and planning direction for this site will follow the OLL LUS (OMNR 1999) and this management

statement. The area encompassed by this site has also been removed from the Tembec Industries Inc Sustainable Forest License (SFL) landbase.

By regulation this conservation reserve cannot be used for commercial forest harvest, mining or hydroelectric power development (OMNR 1999). Existing permitted uses within this reserve may continue such as fishing, hunting and trapping. This SCI document and future management will continue to try and resolve conflicts regarding incompatibility between uses and to ensure that identified values are adequately protected.

This SCI will only address known issues or current proposals with respect to permitted uses or potential economic opportunities brought forward to the District Manager during this planning stage. However, in terms of approving future permitted uses and/or development(s), there are established mechanisms in place to address such proposals. Any future proposals will be reviewed using the Procedural Guideline B - Land Uses – Test of Compatibility *Public Lands Act Policy PL 3.03.05* (OMNR 1997) or other standard MNR environmental screening processes.

Consideration of proposals pertaining to cultural resources may be screened through *Conserving a Future for our Past: Archaeology, Land Use Planning & Development in Ontario, Section 3* (MCzCR, 1997), or in processes such as that used by MNR to establish Area of Concern (AOC) descriptions and prescriptions for cultural heritage resources within forest management plans (FMPs).

These planning tools will help refine the review process once the proposal satisfies the direction and intent of the Public Lands Act, associated policies and this planning document.

### **3.3 Planning Process**

Once a conservation reserve is passed into regulation, it must be determined what level of management planning is required to fulfill the protection targets. There are two policy documents involved. A Statement of Conservation Interest (SCI) is the minimal requirement for providing planning direction, and a Resource Management Plan (RMP) that deals with more complex issues where several conflicting demands are placed on the resources. The guidelines for the preparation of these documents are outlined in Procedural Guideline A – Resource Management Planning (Conservation Reserves Procedure PL3.03.05 *Public Lands Act*). The appropriate plan must be completed within three years of the regulation date.

For current planning purposes, the Pinard Moraine Conservation Reserve will be managed under the auspices of a basic Statement of Conservation Interest. Interested parties from both the private and public sector were consulted during the OLL planning process from candidate conservation reserve to regulation. The public was widely consulted during the regulation process and further



consultation is not required at this time. The intent of this SCI is to fulfil the commitments made within the *OLL LUS* (OMNR 1999).

The revised SCI was reviewed by the Cochrane District Manager (DM). Upon approval by the DM the SCI was presented to the Regional Director (RD) for final approval.

Following RD approval, interested public, user groups and industry were notified that the Statement of Conservation Interest for the Pinard Moraine Conservation Reserve was approved.

Public consultation will be solicited as part of any future reviews of land use proposals that would require new decisions to be made. In addition, any new significant management direction considered will be published on the Environmental Bill of Rights Registry (EBR).

The SCI is a basic planning document that will provide background information, identify values to be protected and establish management guidelines for use in the administration of the reserve.

The implementation of the SCI will be the mandate of the MNR at the District level; however, associations with various partners may be sought to assist in the delivery. This SCI is a working document, and as a result, it may be necessary to make revisions to it from time to time.



Figure 2: An old forest access road in the conservation reserve.

## 4.0 BACKGROUND INFORMATION

### 4.1 Location and Site Description

#### 4.1.1 Location

The following table describes the location and provides administrative details of the Pinard Moraine Conservation Reserve:

<b>Name</b>	Pinard Moraine
<b>Ecoregion – Ecodistrict (Hills 1959)</b>	3E (Lake Abitibi) - 3E-1 (Smokey Falls)
<b>MNR Administrative Region/District Area</b>	Northeast Region/Cochrane District in the Cochrane Area
<b>Total Area</b>	18,201 ha
<b>UTM co-ordinates</b>	446554
<b>Nearest Town/Municipality</b>	Smooth Rock Falls
<b>Township(s)</b>	Hamlet, Trail, Parliament, Pinard, Sheldon
<b>OBM Numbers</b>	43555, 44553, 44554, 45553, 45554
<b>Topographical Map Name/Number</b>	Coral, 42I/4 Fraserdale, 42H/13
<b>Wildlife Management Unit</b>	24
<b>Forest Management Unit</b>	Smooth Rock Falls

Table 1: Location Data

#### 4.1.2 Site Description

##### 4.1.2.1. Physical Description

The Pinard Moraine Conservation Reserve is located approximately 75 km north of the town of Smooth Rock Falls, Ontario, and consists of 18, 201 hectares of land. This site is found within Parliament, Trail, Hamlet, Sheldon and Pinard Townships in the District of Cochrane. The conservation reserve is located in Smokey Falls Ecodistrict 3E-1 (Hills, 1959) of the Lake Abitibi ecoregion 3E, which is characterized by smooth plains of clay and loam over shallow to moderately deep bedrock with a high percentage of muskeg.

The site's boundaries are a mixture of ecological, vectored and cultural. Ecological boundaries include streams in the northeast and southwest portions of the site. Cultural boundaries are limited to the transmission corridor on the lower east side of the conservation reserve and an old logging road on the lower west side. All other boundaries are vectored (see History Map, Appendix #5).

## 4.2 Administrative Description

The legal boundaries of the Pinard Moraine Conservation Reserve will be filed with the Office of the Surveyor General, Ministry of Natural Resources in Peterborough, Ontario. This site is currently waiting to be passed into regulation.

## 4.3 History of Site

Historically the site has been used for wildlife activities. The site contains portions of one Bear Management Areas (CC-24-031) and three traplines (CC185, CC186, CC113).

## 4.4 Inventories

The following table indicates the natural heritage inventory that has occurred or is required in the near future.

Survey Level	Earth Science	Life Science	Cultural	Recreational	Other
Reconnaissance	September 2000	September 2000	Not required at this time	September 2000	None
Detailed	August 2002	September 2004		September 2000	

Table 2: Inventory Data

## 5.0 STATE OF THE RESOURCE

### *Representation:*

The geology of the Pinard Moraine Conservation Reserve is unique to the Cochrane District. Part of the conservation reserve contains an end moraine developed over 8000 years ago when the Laurentide Ice Sheet stopped moving for a prolonged period of time. The conservation reserve captures part of the moraine in the southern part of the site. The moraine itself covers several townships including Pinard, Mobray, Howells, Sheldon and Mewhinney and rises up to 175 feet above its surroundings. The Pinard Moraine is composed of silt, sand and some gravel and has been overlain with clay or loam till ranging from 1 to 3 metres thick. The clay/loam till was deposited as a result of Lake Barlow-Ojibway covering the area as the glaciers melted. The Pinard Moraine was a proposed Area of Natural and Scientific Interest (ANSI) in the early 1990's.

The most northern portion of the Pinard Moraine Conservation Reserve was also a proposed Area of Natural and Scientific Interest. The Emerson-Hamlet Bog was proposed as an ANSI because it is a transition zone between the northern

clay region on the Precambrian Shield and the Hudson Bay Lowlands. The area also offers a distinctive contrast in vegetation community types. The conservation reserve only contains a portion of the bog within its boundaries.

The forest communities within the conservation reserve vary with the geology. The upland areas of the moraine contain deciduous forests of trembling aspen and white birch. The lower slopes contain coniferous forests of black spruce with balsam fir, white spruce, tamarack, white birch and balsam poplar. The valley bottoms of the moraine feature contain a mixture of wetland communities including marshes, treed swamps and treed bogs.

The middle section of the Pinard Moraine Conservation Reserve is dominated by forests that are mainly pure black spruce. Old growth black spruce occurs in this section of the conservation reserve with ages ranging from 150 to 179 years. The southern section of the middle of the site contains some larch dominant conifer forests within black spruce dominant conifer forests (Map 2a, Appendix # 5).

The northern tip of the site contains jack pine forests in the upland areas along the site boundary and spruce bogs in the lower areas.

The wetlands within the Pinard Moraine Conservation Reserve are located in the middle and northern sections of the site. The wetlands are classified as treed bog, treed fen and conifer swamp (Map 3b, Appendix #5). The end moraine has produced its own unique drainage system. Short, incised streams drain water from the moraine areas into the Abitibi River.

*Quality of Representation:*

The quality of the representation or the current characteristics of the natural features found within the conservation reserve are as important as the overall representative features that are being protected. A number of factors are considered in evaluating a site and they include the following criteria: diversity, condition, ecological factors, special features and current land use activities.

a) Diversity:

Diversity is a measure of the site's life and earth science heterogeneity. The evaluation is based on the number and range (variety) of the natural landscape features and landforms for earth science values and the relative richness and evenness of the site's life science components. Natural landscapes and known generalized vegetation communities will be the scale used for this SCI. Future aerial or ground reconnaissance surveys will enhance the MNR's knowledge of these features and possibly allow verification at a lower scale (e.g. species assemblages).

The diversity rating for the Pinard Moraine Conservation Reserve is low. It is considered to have 20 landform:vegetation combinations. Only landform:vegetation combinations above 50 hectares were considered for analysis with unique landform:vegetation combinations also being considered regardless of size.

The southern portion of the site is more diverse than the northern portion of the site. The northern portion is dominated by black spruce while the southern portion of the site is more varied due to the variations in relief on the Pinard Moraine (Map 2a, Appendix #5). The moraine supports dominant deciduous forests containing trembling aspen and white birch with coniferous species such as white and black spruce mixed in.

b) Condition:

Condition is the degree of past human and natural disturbance observed or recorded for the site. The disturbance rating for the Pinard Moraine Conservation Reserve is high. The disturbance in the conservation reserve is of human origin.

There are many harvested areas located within the conservation reserve. The moraine itself was logged before 1980 and the others areas in the conservation reserve were logged between 1984 and 1989. The middle section of the site has been extensively logged. Some regeneration has occurred through tree planting by the MNR and through natural regeneration.

The Pinard Moraine Conservation Reserve contains numerous tertiary logging roads and one secondary road used to access the forests on the other side of the site. There is a transmission line on the eastern boundary and a railway line not far from the transmission line.

c) Ecological Factors:

Ecological factors refer to the current design of the conservation reserve as noted by its size, shape, and protection from adjacent land use activities.

The boundaries of the Pinard Moraine Conservation Reserve are a mixture of ecological, cultural and vectored. The boundaries are mainly vectored with some ecological and cultural boundaries (History Map, Appendix #5). The cultural boundaries include the hydro line on part of the eastern boundary and township lines along the southern and western boundaries. The ecological boundaries follow streams in various sections of the conservation reserve.

There are a few areas where the 200m buffer may not adequately protect the core areas. The arm at the north end has little ecological integrity as its 500m width and vectored boundaries offers little protection from outside influences.

The human disturbances in the site is also a concern as the railway and hydro line bound to the eastern boundary line may enhance trespassing, primarily the in moraine area.

The ridged land surface in the CR, however, does add additional protection as some of the features help protect the site from windthrow. In addition, the site is over 18,000 hectares which is well over the 2000 hectares considered necessary by Ontario Parks to protect representative landscapes as well as allow for low intensity recreation activities.

d) Special Features:

The major features that are present within this conservation reserve include:

- The Pinard Moraine which rises up to 175 feet above its surroundings. This moraine is provincially significant as one of the most massive and spectacular moraines in Ontario (Kristjansson & Kor 1997). This site represents one of the largest such features in northeastern Ontario.
- .The drainage network of deeply incised streams emanating from the moraine.
- The variations in plants species supported by the valleys and ridges of the moraine.

e) Current Land Use Activities

Land use activities associated with this site include hunting, fishing, trapping, snowmobiling and ATV use.

Summary:

The Pinard Moraine Conservation Reserve is a large site which contains a portion of a provincially significant end moraine left behind as the glaciers retreated thousands of years ago. The site was altered by logging in the past and it still contains many forest access roads. The Conservation Reserve contains forest communities ranging from hardwood mixed forests to dominant conifer forests. The site includes many small streams and creeks which eventually run into the Abitibi River.

**5.1 Social/Economic Interest in Area**

a) Linkage to Local Communities:

The Pinard Moraine Conservation Reserve is situated approximately 75 kilometres north of the town of Smooth Rock Falls. The Pinard Moraine Conservation Reserve can be accessed using the numerous tertiary logging roads and the one secondary road that run through the site. In addition, there is a transmission line on the eastern boundary and a railway line in close proximity to the transmission line.

b) Heritage Estate Contributions

The Pinard Moraine Conservation Reserve contributes to the province's parks and protected areas system through its regulation, representation and the long-term management of natural heritage values. By allocating these lands to the parks and protected areas system, the province has ensured a certain level of permanence by distinguishing the site and its values from the broader general use or more extensively managed landscape. In addition, its natural features are, and will be available for present and future generations to enjoy and explore.

c) Aboriginal Groups

The site is located within Taykwa Tagamou Nation's and Moose Cree First Nation's area of interest.

d) Mining Interests:

This conservation reserve has no mining tenure within it. Mining and surface rights have been withdrawn from staking within the conservation reserve's boundaries under the Mining Act (RSO 1990 Chapter M.14).

e) Forest and Fire Management History:

This site has been affected by forest management activities. Harvesting has occurred in the middle of the site. Harvesting took place before 1980 and therefore was done prior to the OLL Land Use Strategy (OMNR 1999) and the interim protection standards.



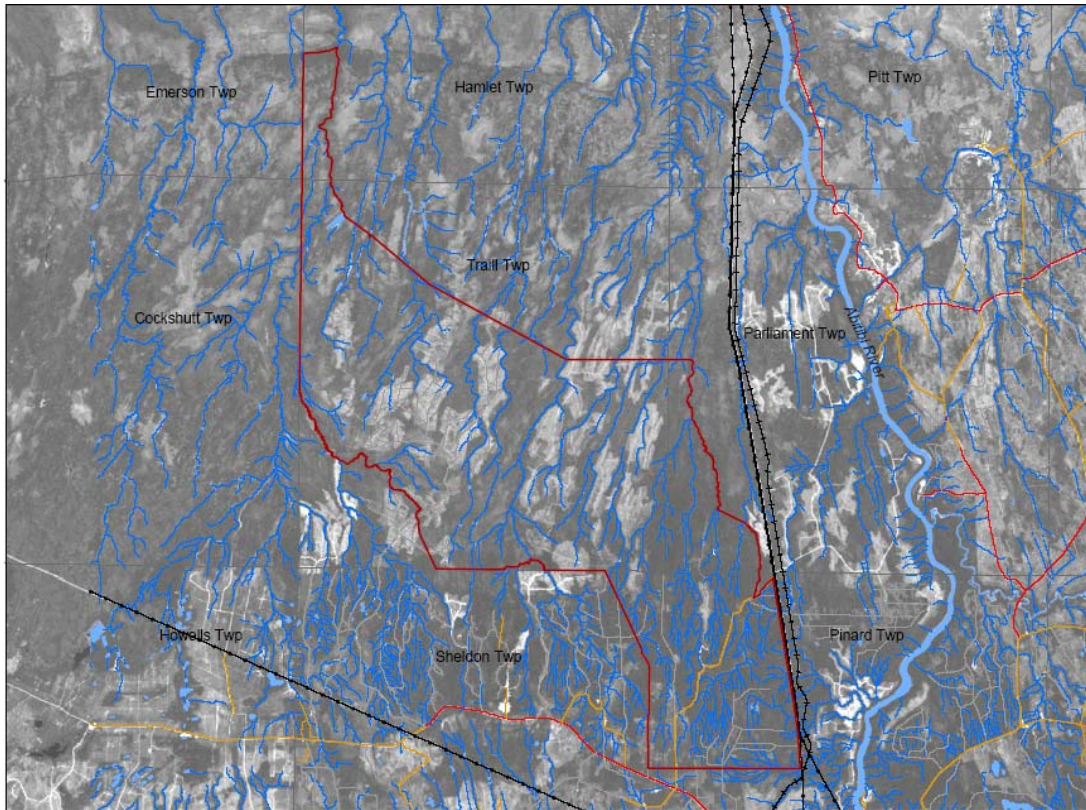


Figure 3: Aerial Photo showing the harvested areas in the conservation reserve.

## 5.2 Natural Heritage Stewardship

Analysis of the life science targets based on landform:vegetation combinations has shown that the conservation reserve contains 20 landform:vegetation combinations. The analysis only considered landform:vegetation combinations that were over 50 hectares in size or that had unique features.

## 5.3 Fish and Wildlife

There are no major lakes within the conservation reserve. There are many small tributaries to the Abitibi River within the site but the fisheries values on the tributaries are not known.

There are a few moose aquatic feeding areas in the Pinard Moraine Conservation Reserve.

## 5.4 Cultural Heritage Stewardship

To date, a detailed assessment of cultural resources has not been carried out.



## **5.5 Land Use/Existing Development**

The conservation reserve is situated entirely on Crown Land and is unencumbered by any land use permits, leases or mining claims. Mining and surface rights have been withdrawn from the reserve (MNDRM G-Plan M-0282 December 12, 2001). The sale of lands within the conservation reserve is not permitted as per the OLL LUS (OMNR 1999). No new recreational camps will be permitted. Road realignments, telecommunications and other resource networks will be discouraged from crossing the site and interrupting the conservation reserve's natural state. New roads for resource extraction and/or private use will not be permitted.

Through the Ministry's plan input and review program, applications for more intense use will be reviewed to ensure natural heritage values within the conservation reserve are considered and protected in planning decisions on adjacent private land.

Any new developments (e.g. tourism developments) proposed for the conservation reserve must go through a Test of Compatibility to ensure that the activity is permitted and to ensure the natural heritage values within the site are protected. If a proposal is considered, public consultation may be required. If accepted, an amendment of the SCI would be required.

## **5.6 Commercial Land Use**

Present commercial use activities includes one bear management areas (CC-24-031) and three traplines (CC186, CC185, CC113). (Map 3a, Appendix #5)

Conservation reserves do not permit mining, commercial forest harvesting, hydroelectric power development, or the extraction of peat, soils, or other industrial uses (Public Lands Act, Ontario Regulation 805/94). Other new commercial activities must meet the requirements of Procedural Guideline B – Test of Compatibility.

## **5.7 Tourism/Recreation Use/Opportunities**

Some of the features within the site associated with possible recreational use include large land mammals, small rivers, moraine and trails. Existing recreational uses in this site and immediately surrounding the site include trapping, large game hunting, ATV riding, snowmobiling, camping and fishing. There is also potential for activities such as bird watching and nature study.

For a more detailed report and summary of the recreational use and potential, refer to the Recreational Inventory Check-Sheet (Appendix #1).

## **5.8 Client Services**

Currently, visitor services are limited to responding to inquiries about access, natural heritage features and boundaries. No formal information or interpretive facilities currently exist within the conservation reserve. Other client services include providing clients with maps, fact sheets, and other information gathered on the area, such as the Earth/Life Sciences and Recreational inventory work.

## **6.0 MANAGEMENT GUIDELINES**

### **6.1 Management Planning Strategies**

The land use intent outlined in the *OLL LUS* (OMNR 1999) provides context and direction to land use, resource management, and operational planning activities on Crown Land in the planning area and within OLL site boundaries.

Commitments identified in the *OLL LUS* and current legislation (Policy 3.03.05 *PLA*) forms the basis for land use within the Pinard Moraine Conservation Reserve. Management strategies for these uses must consider the short and long-term objectives for the conservation reserve. For up to date information on permitted uses refer to the Crown Land Use Atlas (OMNR 2002) ([www.ontarioslivinglegacy.com/crownlanduseatlas/](http://www.ontarioslivinglegacy.com/crownlanduseatlas/)).

Proposed new uses and development will be reviewed on a case-by-case basis. A Test of Compatibility, (Procedural Guideline B – Land Uses (PL 3.30.05)) must be completed before proposals can be accepted. In all cases, ensuring that the natural values of the conservation reserve are not negatively affected by current and future activities will be the priority. Therefore any application for new specific uses will be carefully studied and reviewed.

### **6.2 “State of the Resource” Management Strategies**

The development of this SCI and the long term management and protection of the Pinard Moraine Conservation Reserve will be under the direction of the MNR’s Cochrane District, Cochrane Area Supervisor. The following management strategies have been created to achieve the goal and objectives stated earlier in this management document.

#### Natural Heritage Stewardship

The management intent for Pinard Moraine Conservation Reserve is to allow for natural ecosystems, processes and features to operate undisturbed with minimal human interference while providing educational, research and recreational activities. Forest renewal may be considered to address previously harvested areas and natural or man-made disturbances within the reserve, subject to the Test of Compatibility and a separate vegetation management plan. The site would be evaluated in a vegetation management plan with respect to its known

landform/vegetation features to determine if the past harvested areas could contribute additional landform/vegetation values to the ecodistrict.

In addition, the vegetation management plan will need to determine but not be limited to:

- the restoration ecology objectives (e.g. representation) for the area in context with the ecodistrict;
- consider current provincial strategies (e.g. white pine);
- consider larger long-term conservation reserve (e.g. recreational objectives) and possibly landscape objectives (e.g. contributions to landscape wildlife objectives).

The MNR recognizes fire as an essential process fundamental to the ecological integrity of conservation reserves. In accordance with existing Conservation Reserve Policy and the Forest Fire Management Strategy for Ontario, forest fire protection will be carried out as on surrounding lands.

Whenever feasible, the MNR fire program will endeavour to use “light on the land” techniques, which do not unduly disturb the landscape, in this conservation reserve. Examples of light on the land techniques may include limiting the use of heavy equipment or limiting the number of trees felled during fire response efforts.

Opportunities for prescribed burning to achieve ecological or resource management objectives may be considered. These management objectives will be developed with public consultation prior to any prescribed burning, and reflected in the document that provides management direction for this conservation reserve. Plans for any prescribed burning will be developed in accordance with the MNR Prescribed Burn Planning Manual, and the Class Environmental Assessment for Provincial Parks and Conservation Reserves. Defining compatible uses, enforcing regulations and monitoring and mitigating issues will protect all earth and life science features. Industrial activities such as traditional commercial timber harvest (e.g. logging), non-traditional forest harvest (e.g. Canada Yew harvesting), and new hydro generation will not be permitted within the conservation reserve. Permits for fuel-wood will not be issued. New energy transmission, communication and transportation corridors or construction of facilities within the boundaries of the conservation reserve would be subject to a test of compatibility. The current policy is to discourage new energy transmissions, communication and transportation corridors as such structures negatively impact the quality of the representative features that require protection. However, it is recognized that the Pinard Moraine Conservation Reserve is already impacted by such structures and upgrades to existing facilities or the construction of new facilities may be required in the future. Alternatives should be reviewed via larger landscape planning processes. New roads for resource extraction will not be permitted. Other activities that do not pass a Test of Compatibility will be prohibited (OMNR Policy 3.03.05, 1997).

The introduction of exotic and/or invasive species will not be permitted. Programs may be developed to control forest insects and diseases where they threaten significant heritage, aesthetic, or economic values. Where control is desirable, it will be directed as narrowly as possible to the specific insect or disease. Biological or non-intrusive solutions should be applied whenever possible.

The collection/removal of vegetation and parts thereof will not be permitted; however, subject to a Test of Compatibility, the Area Supervisor may authorize such activities for purposes of rehabilitating degraded sites within the reserve, collecting seeds for maintaining genetic stock and/or for inventory or research purposes.

The MNR will provide leadership and direction for maintaining the integrity of this site as a heritage estate. To ensure MNR protection objectives are fully met within the conservation reserve, activities on the surrounding landscape must consider the site's objectives and heritage values. Research, education and interpretation will be encouraged to provide a better understanding of the management and protection of the natural heritage values and will be fostered through local and regional natural heritage programs, initiatives and partnerships.

The conservation reserve will be managed by allowing natural ecosystems, processes, and features to function normally, with minimal human interference.

### Fish and Wildlife

Fish and wildlife resources will continue to be managed in accordance with specific policies and regulations defined by the Ontario Ministry of Natural Resources under the Fish and Wildlife Conservation Act and the Cochrane District, Cochrane Area Supervisor.

Fishing and hunting is expected to continue at a low level of intensity. Any future trail development will require a test of compatibility.

### Cultural Heritage

When possible, the Ministry of Natural Resources will continue to work with the Ontario Ministry of Culture, Tourism and Recreation in identifying archaeological sites to be protected. To more fully manage and protect sites, the development of field surveys would be required. However, at this time additional field surveys within the conservation reserve are not recommended.

Development, research and education proposals may be considered in accordance with the Test of Compatibility and *Conserving a Future for our Past: Archaeology, Land Use Planning & Development in Ontario*, Section 3 (MCzCR, 1997).

### Land Use and Development

The sale of lands within the conservation reserve is not permitted as per the *OLL LUS* (OMNR 1999). Existing authorized trails can continue to be used and maintained, unless there are significant demonstrated conflicts. New trails will only be allowed if a Test of Compatibility is passed. Any new trail development will require an amendment to the SCI. The cutting of trees for non-commercial purposes (e.g. fuelwood) is not permitted except as required for approved development activity (e.g. trail, viewing site, etc.). New roads for resource extraction will not be permitted. Abandoned forest extraction roads will not be actively maintained.

There are no other forms of tenure in the conservation reserve other than legal agreements with registered trappers and bear management area operators.

Traditional uses within the conservation reserve will continue to be permitted; however, the goal will be to resolve conflicts regarding incompatibility between uses and to ensure that identified values are adequately protected.

### Commercial Use

All existing commercial bait fishing and commercial bear hunting (within BMAs) operations are permitted to continue. The introduction of new commercial bear hunting operations will not be allowed. The issuance of licenses to provide bear hunting services will be allowed where areas have been licensed or authorized under agreement for the activity since January 1, 1992.

Existing commercial fur harvesting operations are permitted to continue. New operations may be considered subject to a Test of Compatibility.

### Aboriginal Interests

The Pinard Moraine Conservation Reserve is within the Taykwa Tagamou Nation's and Moose Cree First Nation's areas of interest. Aboriginal and treaty rights will continue to be respected throughout the management of this conservation reserve. Any future proposal(s) and or decision(s) that have potential impact(s) on individual aboriginal values and or communities will involve additional consultation with the affected aboriginal groups.

### Tourism/Recreation

The earth and life science features and their protection shall be the overall theme for tourism. Small-scale infrastructures for enhancing tourism and recreation (i.e., warm-up shelter) may be considered, providing they pass a Test of Compatibility and other MNR requirements.

Most recreational activities that have traditionally been enjoyed in the area can continue provided they pose no threat to the natural ecosystems and features protected by the conservation reserve. These permitted activities include walking, hiking, wildlife viewing, fishing, hunting, snow shoeing, and cross-country skiing.

Snowmobiles and All Terrain Vehicles (ATVs) are permitted on existing trails and forest access roads within the conservation reserve. Under the *OLL LUS* (OMNR 1999), all mechanized travel is restricted to existing trails. Off trail vehicle use is permitted for the retrieval of game only. The use of existing trails, within the Pinard Moraine Conservation Reserve, does not degrade the values in the site.

Existing trails for hiking, snowmobiling, ATV use, cycling, horseback riding and cross-country skiing can continue. To ensure the quality of the representation is maintained, all trails and old forest access roads within the site should be identified via new technologies (i.e. GPS) to ensure a record of these features exists. New trails can be considered through a Test of Compatibility.

Finally, conflict resolution between recreational uses will be a priority. This will be achieved by adhering to the objectives of this SCI with input from relevant user groups. The level of safety and compatibility between activities will determine permitted uses (i.e. Test of Compatibility).

### Client Services

Clients indicating their interest in the management, planning and future use of this conservation reserve will be put on a mailing list and notified of any future planning concerning the site.

Present client services such as supplying maps, fact sheets and other information will also continue. Information may be delivered from different sources; however, MNR will be the lead agency for responding to inquiries regarding access, permitted and restricted activities, values and recreation opportunities. A management agreement may be pursued with an appropriate partner to share responsibilities for information services and the delivery of other aspects of this SCI in the future.

### **6.3 Specific Feature/Area/Zone Management Strategies**

There are no specific management strategies for the maintenance/protection/enhancement of selected resources within the conservation reserve. Development of such strategies will require an amendment to the SCI.

#### **6.4 Promote Inventory, Monitoring and Assessment Reporting (IMAR), and Research.**

Scientific research by qualified individuals, which contributes to the knowledge of the natural and cultural history, and to environmental and recreational management, will be encouraged.

Additional life science inventory or research is required at this time to refine values and features. Research related to the study of natural processes will be encouraged provided it does not harm the values of the reserve. The Cochrane Area Supervisor or District Manager may approve the removal of any natural or cultural specimen by qualified researchers. All such materials removed remain the property of the Ministry of Natural Resources. All research programs will require the approval of the Ministry of Natural Resources and will be subject to Ministry policy and other legislation.

New research developments such as campsites, privies, trails or developed access points or activities will not be considered until a Test of Compatibility is conducted and the proposal is approved by the Cochrane Area Supervisor or District Manager. The Test of Compatibility or environmental screening process could include a review of the demand for structures or activities and may require more detailed life or earth science or cultural information and possibly more detailed management plan.

Approved research activities and facilities will be compatible with the site's protection objective. Permanent plots or observation stations may be established to which researchers can return over time. Any site that is disturbed will be rehabilitated as closely as possible to its original state.

#### **6.5 Implementation, and Plan Review Strategies**

The Pinard Moraine Conservation Reserve SCI will be reviewed on an ongoing basis and as required.

Implementation of the SCI and management of the conservation reserve is the responsibility of the Cochrane Area Supervisor. Partnerships may be pursued to address management needs.

If changes in management direction are needed at any time, the significance of the changes will be evaluated. Minor changes that do not alter the overall protection objectives may be considered and approved by the District Manager without further public consultation and the plan will be amended accordingly. In assessing major changes, the need for a more detailed Resource Management Plan will first be considered. Where a Resource Management Plan is not considered necessary or feasible, a major amendment to this SCI may be

considered with public consultation. The Regional Director must approve major amendments.

## **6.6 Marketing Strategies**

The Pinard Moraine Conservation Reserve will be marketed as a representative natural area having earth and life science values, as well as certain recreational values. Marketing efforts to increase use are not a priority and will be kept to a minimum.

## **6.7 Boundary Identification**

There is no stated policy to mark the boundaries of a Conservation Reserve. Local management discretion can be used to determine where boundary marking may be appropriate. In order for restrictions to be enforceable, signs must be placed in accordance with the Trespass to Property Act or subsection 28 (1) of the Public Lands Act to advise against any recreational activities.



## 7.0 REFERENCES

Boissonneau, A.N., 1968. Timiskaming and Nipissing, Surficial Geology; Cartography by Lands and Surveys Branch.

Chamber, B.A., Naylor, B.J., Niepoller, J., Merchant, B., and Uhlig, P. 1997. Field Guide to Forest Ecosystems of Central Ontario.

Crins, W.J. and P.W.C. Uhlig. 2000. Ecoregions of Ontario: Modifications to Anquet Hill's Site Regions and Site Districts – Revisions and Rationale.

Cudmore, W. and Longyear, S. 2004. Natural Heritage Area – Life Science Checksheet (C1582).

Geomatics International. 1994. CCEA Case Studies on Ecoregions Gary Analysis: Proposed Methodology for Determination of Representatives. Report prepared for the Canadian Council on Ecological Areas.

Hills, G.A. 1959a. A Ready Reference to the Description of the Land of Ontario and its Productivity.

\_\_\_\_\_. 1959b. Hills Mapping.

Kor, P.S.G. 2002. Earth Science Inventory Checklist – Pinard Moraine Conservation Reserve (C1582).

NTS topographic mapping (41K/16 and 41K/9).

OFRI. 1994a. Boreal East Landforms Mapping – Satellite Imagery.

Ontario Ministry of Citizenship, Culture and Recreation. 1997. Conserving a Future for Our Past: Archaeology, Land Use Planning & Development in Ontario

Ontario Ministry of Natural Resources. 1:20 000 1994 Air Photos.

\_\_\_\_\_. 1995. Forest Resource Inventory Mapping (Ages Corrected).

\_\_\_\_\_. 1997c. Ontario Watershed Mapping.

\_\_\_\_\_. Lakes 1:600 000 Mapping.

\_\_\_\_\_. MTO Roads 1:600 000 Mapping.

\_\_\_\_\_. Patent 1:600 000 Mapping.

\_\_\_\_\_. Railway 1:600 000 Mapping.

\_\_\_\_\_. Townships 1:600 000 Mapping.

\_\_\_\_\_. Transmission Lines 1:600 000 Mapping.

Ontario Ministry of Natural Resources Sault Ste. Marie District. 2001. C289 Searchmount South Forest Conservation Reserve.

Poser, S. 1992. Report of the status of provincial parks in the site region and districts of Ontario. Ministry of Natural Resources Report.

Rowe, J.S. 1972. Forest Regions of Canada.

Thompson, J.E. 2001. Aerial Reconnaissance Notes.

## **Appendix 1: Recreation Inventory Check Sheet**

## **Appendix 2: Procedural Guideline B – Land Uses – Test of Compatibility (PL 3.03.03)**

### **Procedural Guideline B – Land Uses –(Conservation Reserves Policy (Procedure 3.03.05)**

The Conservation Reserve policy provides broad direction with regard to the permitted uses. The policy provides only an indication of the variety of uses that will be considered acceptable in conservation reserves. Any new uses, and commercial activities associated with them, will be considered on a case by case basis, and, subject to the following test of compatibility. To ensure a standard screening process is followed, reviews of all current and new activities will be subject to the screening criteria as specified by the Environmental Assessment Act (R.S.O. 1900, Chapter E.18).

The following outlines the two steps involved in performing a Test of Compatibility. An assessment of current activities would only follow step two, which focuses on the impacts. An assessment of any new activity would consider the impact of the activity and its conformity to the SCI

1. Conformity to SCI/RMP: SCI describe values for which an area has been set aside and the range of appropriate uses that will be permitted in the area. SCI may also speak to the acceptability of other 'new' uses currently not occurring in the area.

The first 'test' is: "do proposed new land uses and/or commercial activities conform to the direction of the SCI/RMP for the conservation reserve? Would the new use(s) depart from the spirit of appropriate indicator land uses in the SCI?"

2. Impact Assessment: If the proposed use(s) pass test 1 it is important to determine their impact on the area before they are approved. This should include the following:
  - Impact on natural heritage values: "will the new use(s) impact any natural values in the area? If so how and to what degree? Is it tolerable?"
  - Impact on cultural values: "will the new use(s) impact an historical or archaeological values in the area?"
  - Impact on research activities: "will the new use(s) affect research activities in the area?"
  - Impact on current uses: "will the new use(s) have any negative impact on the array of current uses?"
  - Impact on area administration: "will the new use(s) increase administrative costs and/or complexity?" (For example, the cost of area monitoring, security and enforcement).

- Impact on accommodating the use outside the conservation reserve:  
“Could the use(s) be accommodated as well or better outside the conservation reserve?”

Impact on socio-economics of the area: “will the new use(s) affect the community(ies) surrounding the area in a positive or negative way?” (For example, will the new use make an area less remote thereby affecting a local tourism industry that is dependent on the area’s remoteness for its appeal?”

**Impact on area accessibility: “does the new use(s) give someone exclusive rights to the area or a portion of the area to the exclusion of other existing uses?”**

## **Appendix 3: Procedural Guideline C – Research Activities in Conservation Reserves**

### **Purpose**

To encourage contributions to the goal of the conservation reserves by:

- Providing direction for research activities associated with the conservation reserves; and
- Establishing a process for the review and approval of proposals by researchers, which could have an impact on the values protected by the conservation reserve

### **Definition**

Research means any investigation or study of the natural, cultural, social, economic, management or other features or characteristics of conservation reserves.

### **Guidelines**

Research will be encouraged to provide a better understanding of the natural values protected by a conservation reserve and to advance their protection, planning and management.

The Statement of Conservation Interest will define, for each conservation reserve, the key research issues, set out the parameters within which research may occur and identify research needs.

### **Applications and Approvals**

Researchers must apply in writing to the Area Supervisor for permission to conduct research. The request letter must contain a statement explaining why the proposed research should be undertaken in the particular conservation reserve in preference to another location.

Proposals will be reviewed and approved by the Area Supervisor, guided by the Statement of Conservation Interest prepared for each reserve, including adherence to the Test of Compatibility. Permission must be granted in writing, including any conditions to be met in conducting the research prior to the undertaking of any research project.

## **Terms and Conditions**

Permission to conduct research under this policy will be valid for a period of 12 consecutive months from date of issue. Permission to continue a research project for addition periods of 12 months or less may be granted upon submission of a written request and progress report. The Ministry may require the posting of collateral to assure that the terms and conditions of granting permission are met.

The Area supervisor may suspend or revoke permission at any time for failure on the part of the researcher to meet:

1. The intent or conditions of this policy
2. The requirements under the Public Lands Act, including all amendments, where applicable
3. The requirements under any other Act or Regulations of Ontario or Canada, including those governing the taking, handling, storing, confining, trapping, excavating and marketing any specimen, artefact, information or action (for example, scientific collector's permit)
4. The condition and agreement specified in granting permission.

## **Final Report**

The researcher will submit copies of reports, publication and theses following from the results of the project to the Area Supervisor.

## **Appendix 4: Crown Land Use Atlas – Policy Report**



## **Appendix 5: Natural Heritage - Life Science Check Sheet**

## **Appendix 6: Earth Science Check Sheet**

## A7 SCI AMENDMENTS

### **Amendment #1**

**Section:** 4.2 Administrative Description

**Type:** Administrative

**Reason for amendment:** Site has officially been regulated

**Date:** May 11, 2005

Section 4.2 should now read:

The Pinard Moraine Conservation Reserve was regulated as schedule 267 of Ontario Regulation 181/05 made under the Public Lands Act on April 20, 2003 and filed April 21, 2005, amending Ontario Regulation 805/94. The legal description as found in the May 7<sup>th</sup>, 2005 edition of the Ontario Gazette, reads as follows:

*In the geographic Townships of Hamlet, Trill, Parliament, Sheldon and Pinard, in the Territorial District of Cochrane, containing 18,202 hectares, more or less, being composed of that part of the said geographic townships designated as Part 1 on a Plan known as C1582 Pinard Moraine Conservation Reserve, filed on April 14, 2004, with the Office of the Surveyor General of Ontario in the Ministry of Natural Resources.*

The official Ontario Gazette amendment is available on the internet at <http://www.ontariogazette.gov.on.ca/>.

