

MANITOU CONSERVATION RESERVE

STATEMENT OF CONSERVATION INTEREST



Ministry of Natural Resources
Rainy River/Manitou Area
Fort Frances District

February, 2000

Mark Austin
Resource Manager Intern
Atikokan



Ontario's
Living Legacy

Approval Statement

I am pleased to approve this Statement of Conservation Interest for the Manitou Conservation Reserve.

This Statement of Conservation Interest provides guidance for the management of the conservation reserve and the basis for the ongoing monitoring activities. More detailed direction at this time is not anticipated. Should significant facility development be considered or complex issues arise requiring additional studies, more defined management direction, or special protection measures, a more detailed Conservation Reserve Management Plan will be prepared with full public consultation.

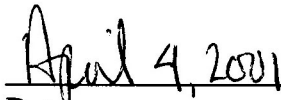
The public was consulted during the original regulation process and further consultation is not required at this time.

The conservation reserve will be managed under the jurisdiction of the Rainy River/Manitou Area Supervisor, Fort Frances District, Ministry of Natural Resources.



for

Charlie Lauer
Regional Director
Northwest Region



Date

CONTENTS

1.0 INTRODUCTION.....	1
2.0 BACKGROUND INFORMATION.....	2
2.1 TARGETS	3
2.2 SURVEY INFORMATION.....	3
3.0 VALUES TO BE PROTECTED.....	4
3.1 VALUES IDENTIFIED ON THE SITE	4
3.2 VALUES TO BE PROTECTED.....	6
4.0 MANAGEMENT GUIDELINES.....	7
4.1 LAND TENURE.....	7
4.2 EXISTING AND PROPOSED DEVELOPMENT	7
4.3 RECREATIONAL ACTIVITIES.....	8
4.4 COMMERCIAL ACTIVITIES	8
4.5 ABORIGINAL INTERESTS	8
4.6 NATURAL RESOURCES STEWARDSHIP	8
4.6.1 <i>Vegetation Management</i>	9
4.6.2 <i>Fish and Wildlife Management</i>	8
4.6.3 <i>Landforms</i>	8
4.7 CULTURAL RESOURCES STEWARDSHIP.....	8
4.8 CLIENT SERVICES	9
4.9 RESEARCH.....	9
4.10 MARKETING	10
5.0 IMPLEMENTATION.....	10
6.0 REVIEW AND REVISIONS	10
6.1 REVIEW AND REVISIONS.....	10
6.2 PUBLIC CONSULTATION.....	10
6.2.1 <i>Results of Past Consultation</i>	10
6.2.2 <i>Present and Future Consultation</i>	10
7.0 REFERENCES.....	11
Map of Site.....	12

TABLES

Table	Page
1. Background Information	2
2. Summary of Social, Economic and Environmental opportunities	3
3. Level of survey performed	3
4. Values Identified in the Conservation Reserve	4
B1. Forest Resource Inventory (FRI) - Forest Stands	App. B
B2. Forest Ecosite Classification	App. B
D1. Permitted Uses	App. D

FIGURES

Figure	Page
1. Map of Manitou Conservation Reserve	12
A1. Values Map	App. A
A2. Aerial Boat Count Results (2000)	App. A
B1. Aerial View of Manitou C.R.	App. B
B2. Shoreline of Manitou Stretch	App. B
C1. Forest Types	App. C
E1. Location Map	App. E

List of Appendices

- A.** Recreational Surveys
- B.** Photos of Manitou Site
- C.** Ecosite Classification & Forest Resource Inventory
- D.** Permitted Uses List
- E.** Regional Context Map
- F.** Noble, T., Site District 4S5 Gap Analysis; Ontario Ministry of Natural Resources, Northwest Region, 1995.

1.0 Introduction

On July 16, 1999, the Ontario Government released the Ontario's Living Legacy Land Use Strategy to guide the planning and management of Crown lands in central and parts of northern Ontario. A major part of the Ontario's Living Legacy Land Use Strategy was a government intent to establish 378 new protected areas. This commitment marks the biggest expansion of provincial parks and conservation reserves in Ontario's history.

The **Manitou Conservation Reserve** is part of this significant expansion of Ontario's protected areas system.

Conservation reserves are areas of Crown land set aside by regulation under the Public Lands Act, complementing provincial parks in protecting representative natural areas and special landscapes. Most recreational (e.g. hiking, skiing, tourism related uses, nature appreciation) and non-industrial (e.g. fur harvesting, commercial fishing and bait harvesting) activities that have traditionally been enjoyed in the area will continue, provided that these uses do not impact on the natural features needing protection. Hunting and fishing is permitted within all new conservation reserves proposed through Ontario's Living Legacy.

Commercial timber harvesting, mining, aggregate extraction and commercial hydroelectric development are prohibited in conservation reserves. Careful mineral exploration may occur in specific new conservation reserves proposed through Ontario's Living Legacy, in areas that have been identified as having provincially significant mineral potential by the Ministry of Northern Development and Mines. If a portion of a new conservation reserve is to be developed for a mine, it would be removed from the reserve, and appropriate replacement lands would be placed in regulation.

The upland forests and associated wetlands captured by the Manitou site include representative areas of old growth red pine, white pine and eastern white cedar. The site also contains other representative landform and vegetation types, including a variety of conifer, hardwood and mixed forests and examples of areas affected by natural wildfire. The rugged terrain of the proposed Manitou Conservation Reserve is an example of thin glacial outwash till deposited over metavolcanic bedrock following the recession of the glaciers some 10,000 years ago. The area supports a healthy population of moose, bear and many small mammals. The site has good potential for outdoor recreational activities, with high scenic values, an abundance of wildlife and excellent fishing opportunities. The southern area of this reserve is accessible by water through the adjacent proposed Highrock Conservation Reserve.

The purpose of this Statement of Conservation Interest is to identify the natural heritage values of the Manitou Conservation Reserve, the activities which occur there and, through a set of management guidelines, outline the activities which will and will not be permitted, as well as the management direction for the area.

2.0 Background Information

The Manitou Conservation Reserve is an area identified for its old growth red pine, white pine and eastern white cedar, and one of six candidates originally selected in the Northwest Region Old Growth Study (1994). It is a roadless, largely undisturbed tract accessible only by water or floatplane. The undulating bedrock topography, numerous clearwater lakes within and adjacent to the area, and a variety of forest and wetland ecosites represented contribute to the diversity of the rugged landscape.

Table 1. Background Information

<i>Name</i>	Manitou Conservation Reserve
<i>Site Region / Site District</i>	4S5
<i>Ecosite Class</i>	ES 17, 18, 19, 23, 24, 28, 29, 34, 35, 37, 39, 40, 41, 42, 44, 45, and 46
<i>OMNR Administrative Region / District / Area</i>	Northwest / Fort Frances / Rainy River-Manitou Area
<i>Total Area (ha)</i>	3746
<i>Regulation Date</i>	Not yet regulated.
<i>First Nations with Interest in Area</i>	Treaty Three: Naicatchewenin, Couchiching and Stanjikoming First Nations (Note: as this area lies along a major historical travel route, other First Nations may also have an interest)
<i>OBM</i>	480054400, 490054400
<i>Lat./Long.</i>	40°09'N; 93°11'W
<i>Basemap</i>	2015480054400, 2015490054400
<i>Forest Resource Inventory Stands</i>	Refer to Appendix C
<i>General Location Description</i>	The Manitou Conservation Reserve is situated approximately 56 kilometres northeast of the Town of Fort Frances. The site includes the northern shoreline of Manitou Stretch, and extends west to Cross Lake, north to Harris Lake, and east to Grant Lake. Davis Lake, Gates Lake and several unnamed lakes all lie within the protected area. (refer to Figure 1.)
<i>Access</i>	Access can be gained via Highway 502 and the Cedar Narrows Road; then from the landing on Esox Lake by water north through Esox and the Manitou Stretch.

2.1 Targets

This section provides a summary of the earth and life science system and values, cultural resources represented and recreational opportunities available or possible.

Table 2. Summary of Social, Economic and Environmental Opportunities

<i>Life Science Representation</i>	The area contains representative old growth red pine, white pine and cedar ecotypes. Additionally, the area contains examples of wetland ecotypes, burned areas and mixed conifer and deciduous forest.
<i>Earth Science Representation</i>	Thin glacial outwash till deposited over metavolcanic bedrock. The dominant feature is weakly broken ground moraine. (Roed, 1980)
<i>Cultural Resource Representation</i>	The area contains one native pictograph site known locally as "Painted Rock", and one burial site.
<i>Recreational Opportunities</i>	Good hunting and fishing opportunities as well as opportunities for backcountry camping, hiking, snowmobiling and canoeing. Old growth values provide opportunities for naturalists, ecological interpretation and wildlife viewing.

2.2 Survey Information

This section provides an overview of the inventories completed, their level of detail and any further inventories required.

Table 3. Level of survey performed

Survey Level	Life Science	Earth Science	Cultural	Recreational⁴
Reconnaissance	Yes ¹	Yes ²	Yes ³	Sept. 6, 2000 & Feb. 14, 2001
Detailed	No	No	No	Oct. 18, 2000
Requirement	No	No	No	No

¹ Noble, 1995

² Noble, 1995

³ Van den Broeck, 2000

⁴ Refer to Appendix F for survey details.

The surveys which have been completed, in conjunction with other values and earth/life science records for the area are deemed sufficient in scope and detail to determine management direction for the conservation reserve. More detailed surveys may be undertaken at a later time if circumstances change.

3.0 Values to be Protected

This section provides a description of the key natural heritage values on the site (Appendices) and their condition relative to past resource use and management activities. It also addresses the values' sensitivity to future land use and management activities.

3.1 Values Identified in the Conservation Reserve

Table 4. Values identified in the conservation reserve

<i>Life Science</i>	There are abundant old growth eastern white cedar stands throughout the area. Old growth red and white pine stands can be found in the southwestern part of the area, with individual trees and groups scattered throughout. The red and white pine stands are likely remnants of the forest that predates logging for these species early in the twentieth century, since their average age is approximately 140 years old. Other representative forest types include old burns, mixed forest and wetlands. (refer to Appendix C)
<i>Earth Science</i>	The dominant feature is weakly broken ground moraine. An esker ridge, exposed on the shore of the Manitou Stretch is also evident.
<i>Cultural</i>	The area contains one identified native pictograph site known locally as "Painted Rock", and one burial site.
<i>Aboriginal</i>	The area contains one identified native pictograph site known locally as "Painted Rock", and one burial site, as noted above.
<i>Tourism</i>	Remote, non-consumptive tourism opportunities (" <i>eco-tourism</i> ") could potentially be developed. The conservation reserve contains three commercial boat caches. These caches are located near the southern boundary of the conservation reserve. Furthermore, there are numerous outpost camps servicing the boundary lakes of the reserve.
<i>Recreational Fishing</i>	The recreational fishing potential for the interior of this conservation reserve is relatively unknown, as lake surveys have not been undertaken. Harris Lake, bordering on the northern side of the conservation reserve has good fishing potential for lake trout, whitefish and northern pike. Grant Lake, on the east side of the conservation reserve, contains many popular game species, and Mister Lake, on the western side of the conservation reserve, is known to contain lake trout. All three of these lakes can be accessed

	by portage or floatplane. The more remote lakes may be more readily accessed in winter by snowmachine. The south side of the reserve borders on the Manitou Stretch, a large lake with most popular game species. Harris and Lower Manitou Lakes receive by far the greatest fishing pressure (Aerial Boat Count, 2000). They are the largest of the lakes in the area, and, with the exception of the outpost on Grant Lake, have all the existing tourist establishments.
<i>Recreational/ Commercial Hunting</i>	Hunting potential for moose, deer, and bear is judged to be good, based upon available habitat and the apparent lack of significant hunting pressure (Recreational Survey, Appendix A). Access during hunting season to the interior of the area is a limiting factor. The area contains portions of two Bear Management Areas (BMA's), FF 9A-32 and 9A-33.
<i>Mining</i>	No new mining opportunities will be permitted.
<i>Aggregate</i>	The area is generally low potential for aggregate extraction, with frequent shallow soils over bedrock and bedrock outcrops. (Roed, 1980) However, at least one esker feature has been identified on the southwest side of the conservation reserve. No aggregate permits currently exist within the area. Commercial aggregate removal will not be permitted.
<i>Forest Harvest</i>	Apart from possible logging of red and white pine early in the last century, no forest harvesting has been documented in this area. Commercial forest harvesting is not allowed within the conservation reserve.
<i>Trapping</i>	The conservation reserve is contained within the boundaries of trapline FF33. There is a trapper's cabin located on the southern boundary of the site. Commercial trapping will be permitted to continue.
<i>Wild Rice</i>	Commercial wild rice harvesting currently does not occur within this conservation reserve, nor have stands been identified.
<i>Wildlife</i>	Commercial game species, such as bear, moose and deer can be found throughout this area. There is an osprey nest on the east side of Davis Lake and an eagle's nest just outside the east boundary of the conservation reserve on Grant Lake. The forest provides habitat for marten and species requiring similar mature forest.
<i>Commercial Fish</i>	No commercial fishing for human consumption exists within the conservation reserve, although this activity does exist in the adjacent waters. Commercial baitfishing does occur, with the area forming parts of baitfish blocks #138 and #143, and will be permitted to continue.

3.2 Values Protection

The intent of this Statement is to protect the above-mentioned values by establishing management guidelines for existing and potential uses in this area, given the level of past disturbance and the nature of the existing features.

Forest Values

Old growth white pine, cedar and red pine stands are relatively rare in the boreal forest landscape. However, sustaining these values in the long-term may require development of a vegetation management plan and natural fire strategy similar to that adopted in Quetico Provincial Park. The eastern white cedar forest covering the majority of the conservation reserve is unlikely to change without the advent of a major disturbance (i.e. Fire). Pressure on fish and wildlife values within the conservation reserve is relatively low and is not expected to change, given the lack of road access. Activities that represent the greatest potential impacts on forest structure, logging, mining and hydro electric development, will not generally be permitted. (Note: protocols do exist whereby mining activity could occur, in accordance with the provisions of the *Land Use Strategy*)

Recreational and Commercial Values

The Manitou Conservation Reserve contains a high component of older trees, which have an inherent aesthetic value. There is the potential for a multitude of low impact, non-consumptive recreational activities such as hiking, canoeing and wildlife viewing.

The existing trapline, baitfish harvest areas and bear management areas within the conservation reserve will remain and existing uses associated with them allowed to continue. Normal application of controls such as quotas and seasons are designed to ensure that affected wildlife populations remain sustainable. There is a trapper's cabin located within the conservation reserve on Manitou Stretch, which is allowed under the terms of the trapline. Recreational hunting and angling pressure is largely confined to adjacent large lakes. The relatively low level of use is believed to be due mainly to limited access and alternative opportunities available in surrounding areas.

Tourism Values

Access to this area is primarily by water through the Manitou Lakes network. According to the 2000 aerial boat count, the Manitou Stretch and Harris Lake represent the highest recreational use of waters within or adjacent to the conservation reserve. These two large lakes adjoining the area on the south and north, respectively, also support several tourist establishments, including both outposts and main lodges. Since the traditional uses that such facilities support will be

permitted to continue within the conservation reserve, no adverse impacts on these businesses is expected. Promotion of the area as a conservation reserve, especially if ecotourism markets are targeted, could benefit these businesses, while representing little impact on the values of the reserve.

4.0 Management Guidelines

4.1 Land Tenure

The Manitou Conservation Reserve consists entirely of Crown Land, with the exception of one parcel of private land (inholding) located on an island in Gates Lake. Two private lots adjacent to the conservation reserve also exist, one on Harris Lake and one on the Manitou Stretch. Although surrounded by the conservation reserve, these private lots are not part of the conservation reserve. No disposition of Crown land by sale is permitted within the conservation reserve, with the possible exception of minor dispositions such as the sale of shoreline road allowances in front of existing private lots or the sale of small parcels of land to provide an adequate area for the installation of a septic system. Such minor dispositions would only be permitted where it does not detrimentally affect the values an area is intended to protect. New leases or land use permits may be considered for approved activities, as a regulatory measure. No expropriation or purchasing of private land for inclusion in the conservation reserve is planned.

Historically the water levels of the Manitou system have been affected by the installation of a dam between Essex and Gussie Lake in order to facilitate navigation by the large barges plying the waters of the Manitous (Van den Broeck, 2000). If at such time water levels of Manitou Stretch are decreased all newly exposed land adjacent to the conservation reserve will be considered to be part of the conservation reserve.

4.2 Existing and Proposed Development

Controlled exploration for minerals in areas with provincially significant mineral deposits may be permitted. If a portion of a new conservation reserve is to be developed for a mine, it would be removed from the reserve, and appropriate replacement lands would be placed in regulation.

No roads currently exist within the area and no new roads will be permitted, with the exception of roads that may be required to support mining activities as discussed previously.

No commercial aggregate permits exist for the area of the conservation reserve and no new permits will be issued. Aggregate extraction will not be permitted.

No logging operations or facilities, nor hydro- electric facilities or structures exist within the area and no new development will be allowed.

One private lot exists adjacent to the conservation reserve, which is occupied by a commercial tourist establishment.

4.3 Recreational Activities

Angling and hunting will be allowed to continue within the conservation reserve, subject to applicable regulations. The use of motorized and non-motorized vehicles will be permitted on any existing trails provided such use does not compromise the management principles and policies applicable to the conservation reserve as identified in this statement of conservation interest. New trails may be permitted, subject to review and approval through the planning process to ensure that their creation and use are compatible with the values of the conservation reserve. Other recreational low impact activities such as skiing, canoeing and hiking are permitted.

Existing Ministry policies and regulations relating to Crown land camping will apply. Existing policies relative to boat and equipment caches will also apply.

4.4 Commercial Activities

Activities associated with current traplines and baitfish harvesting areas in the conservation reserve will be permitted to continue in accordance with existing policies and regulations. New operations may be considered, subject to a test of compatibility.

Existing bear management areas will be permitted to continue in accordance with existing policies and regulations. No new operations are permitted.

New commercial tourism facilities within the Manitou conservation reserve may be considered subject to review through the planning process as set out in the Draft Class Environmental Assessment for Ontario's Provincial Parks and Conservation Reserves. Existing Ministry policies and regulations relating to Crown land camping will apply. Existing policies relative to boat and equipment caches will apply.

4.5 Aboriginal Interests

The creation of this conservation reserve will not affect any Aboriginal or treaty rights. Consultation with interested First Nations towards identifying cultural and spiritual values within the area will continue.

4.6 Natural Resources Stewardship

4.6.1 Vegetation Management

The Manitou Conservation Reserve will be managed to allow natural processes to continue. Suppression of fire will occur in accordance with existing MNR fire suppression strategies. The development of a vegetation management plan for the area in the context of regional fire strategies is recommended over time.

4.6.2 Fish and Wildlife Management

Current Acts, Regulations and Policies will apply. The lands and waters of the conservation reserve will be included in scheduled fish and wildlife management programs and activities. The terrestrial and wetland ecosites of the conservation reserve will be considered in other resource management planning as a component of the wildlife habitat in the broader landscape.

4.6.3 Landforms

Activities that tend to impact landforms, such as aggregate extraction and road construction, will not be permitted, subject to the conditional exceptions identified in section 4.2.

4.7 Cultural Resources Stewardship

The location and specific details regarding cultural heritage resources may be kept confidential in order to ensure protection of such values and sites.

4.8 Client Services

The permitted uses and recognized values of this conservation area will be made known to the public through public consultation associated with the Land Use Strategy, the site regulation process, and materials, including this Statement of Conservation Interest, available through Government Information Centres. No significant advertising campaigns for the Manitou Conservation Reserve are planned at this time.

Future planning for the conservation reserve will be in accordance with the Class Environmental Assessment for Provincial Parks and Conservation Reserves, which may involve formal public consultation.

4.9 Research

Research activities which do not detrimentally affect the values which the conservation reserve is designed to protect will be encouraged.

4.10 Marketing

No marketing of this reserve for tourism and recreational purposes are planned at this time.

5.0 Implementation

The Manitou site will be regulated as a Conservation Reserve under the Public Lands Act, in 2001, following the process set out in the Ontario's Living Legacy Protected Areas Regulation Implementation Manual. (*MNR, 2000*)

The Fort Frances District, Rainy River/Manitou Area of the Ministry of Natural Resources will be responsible for implementing the management policies and guidelines for the area. All MNR Resource Management Plans or Land Use Plans will be revised as necessary to exclude timber harvesting and other non-permitted activities from this area. All stakeholders and clients will be informed through mail and other consultation of the changes that will take affect. The Rainy River/Manitou Area will have primary responsibility in administering the policies and guidelines. The primary role is providing public information and monitoring of compliance to the policies and guidelines.

6.0 Review and Revisions

6.1 Review and Revision Process

The Manitou Conservation Reserve Statement of Conservation Interest will be reviewed on an ongoing basis and revised as needed.

Revisions to the Manitou Statement of Conservation Interest will be subject to the requirements as specified in the Draft Class Environmental Assessment for Provincial Parks and Conservation Reserves. Significant changes as defined under the Class EA will involve a public consultation process and approval from the District Manager and Regional Director of the Ministry of Natural Resources.

6.2 Public Consultation

6.2.1 Past Consultation

The Manitou site was part of the Consultation process from early in the land use planning exercise.

- Lands For Life round table consultation June 1997- July 1998
- Ontario Forest Accord 1999
- Ontario's Living Legacy round table discussions 1999
- OLL Site Regulation Public Consultation Process.

6.2.2 Present and Future Consultation

2000 Site Regulation Process:

- District Manager- Mailouts to adjacent property owners and other affected and interested parties and agencies, and newspaper ads placed in local and regional media.
- One individual raised a concern relative to the proposed Conservation Reserve. The concern related to restrictions surrounding mineral exploration and mining activities. The identified issue was addressed by referring the individual to the provisions within the Land Use Strategy which deal specifically with such matters, and the protocol to be followed where areas of provincially significant mineralization are identified.
- Recommendations: Based on the input received, no revisions to the boundaries of the site are deemed necessary.

(More detailed Consultation Documentation is available on file at the Fort Frances District offices of the Ministry of Natural Resources)

7.0 References

Ministry of Natural Resources. 2000. Aerial boat Count 2000. Fort Frances District Unpublished.

Ministry of Natural Resources. 1997a. Conservation Reserves Policy and Procedure. PL 3.03.05.

Ministry of Natural Resources, Field guide to the forest ecosystem classification for northwestern Ontario; Second Ed. Queens Printer for Ontario, Manitoba Canada. 1997.

Ministry of Natural Resources, Protected Areas Regulation Implementation Manual; Internal Document, 2000.

Noble, T., Site District 4S5 Gap Analysis; Ontario Ministry of Natural Resources, Northwest Region, 1995.

Roed, M.A. 1980. Northern Ontario Engineering Geology Terrain Study 37, Rowan Lake Area, OMNR.

Van den Broeck, John, 2000. Background paper, Esos dam partnership.

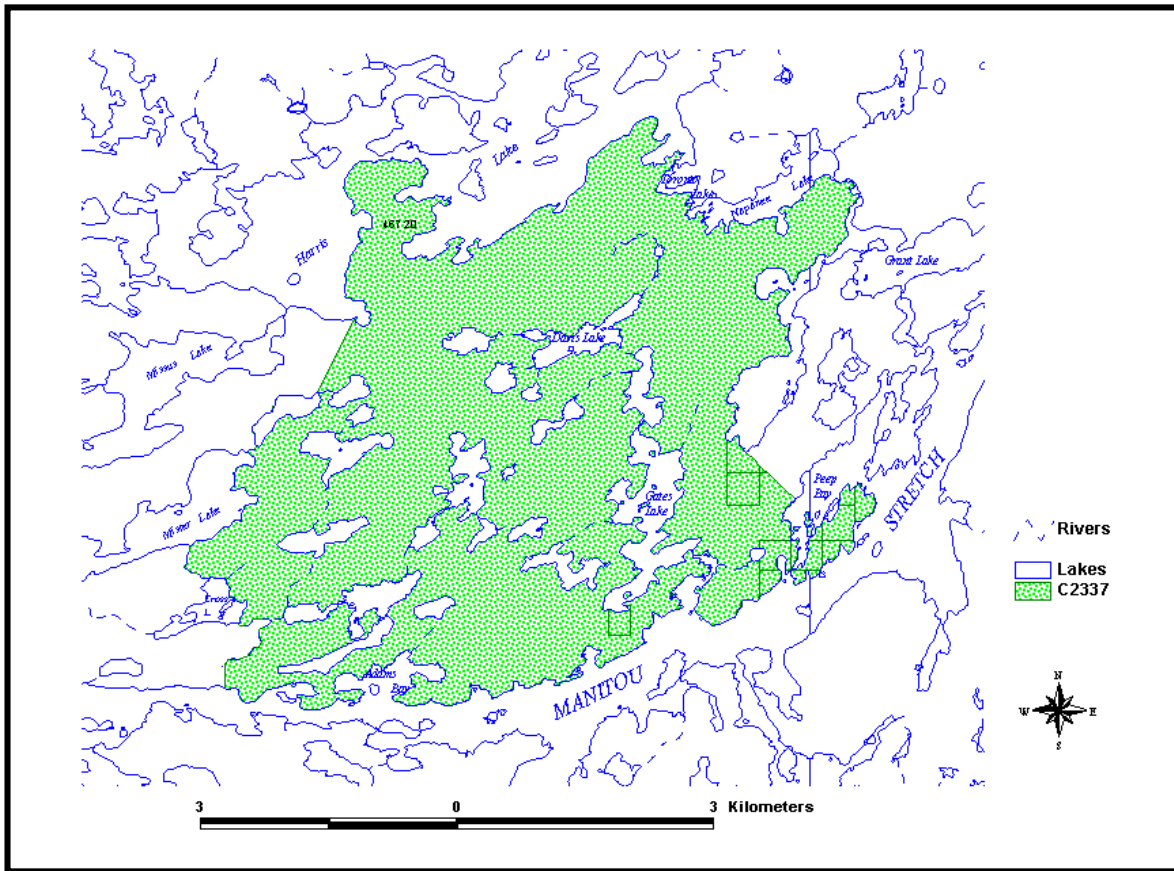


Figure 2. Manitou Conservation Reserve Boundary

(NOTE: This map is to be replaced with the site Regulation Plan map once approved)

Appendix A

Recreational Surveys

OLL Recreational Inventory

Employee Name Mark Austin Date September 6, 2000
 Park Name Manitou Conservation Reserve Local Name C2337
 County N/A Township N/A

Note: Aerial Reconnaissance Flight

PART 1 – Basic Recreation Opportunities

- | | |
|------------------------|---|
| Backcountry camping | <input checked="" type="radio"/> Y N Estimated # Tents/Parties Seen <u>None</u>
Comments/Details <u>There are abundant camping opportunities in the interior of this reserve.</u> |
| Canoeing | <input checked="" type="radio"/> Y N Estimated # Canoes Seen <u>None</u>
Comments/Details <u>There is an interconnected infrastructure of lakes and rivers throughout the park. There is a good potential for use by canoeists.</u> |
| Hiking | <input checked="" type="radio"/> Y N Estimated # Hikers Seen <u>None</u>
Comments/Details <u>No existing trails were noticed during this visit to the park. Trails would need to be created before extensive hiking opportunities become available in the reserve.</u> |
| Hunting | <input checked="" type="radio"/> Y N Estimated # Hunters Seen <u>None</u>
Comments/Details <u>This visit was not performed during hunting season. However, the stand structures observed would support a multitude of hunting opportunities.</u> |
| Fishing – recreational | <input checked="" type="radio"/> Y N Estimated # Fishing Boats Seen <u>None</u>
Comments/Details <u>For the most part, access to the internal lakes of this reserve by motor boat is difficult if not impossible. Any recreational fishing must be performed on bordering lakes or be performed in conjunction with canoeing or hiking</u> |
| Lakes | <input checked="" type="radio"/> Y N % of Lakes Seen <u>90%</u>
Comments/Details <u>The lakes overall are coldwater and are often found with wetlands nearby.</u> |
| Swimming opportunities | <input checked="" type="radio"/> Y N
Comments/Details <u>The lakes of this area are large enough to provide ample swimming opportunities. There are potential swimming sites on exposed bedrock.</u> |
| Beaches | <input checked="" type="radio"/> Y N # Beaches Seen <u>None</u> |

Comments/Details Beaches may exist in the area, however none were observed during this trip.

Rapids/waterfalls

Y N # Rapids/waterfalls Seen None

Comments/Details _____

Other recreational/scenic features:

Old Growth Forests

Y N # Seen 4

Comments/Details These areas have high aesthetical values.

_____ Y N # Seen _____

Comments/Details _____

_____ Y N # Seen _____

Comments/Details _____

Summary of Area Description and Land Use Intent provided in Appendix A of the Land Use Strategy, July 1999, with specific reference to recreation uses and features: The primary purpose of this conservation reserve is the conservation of the unique landscape and vegetation types of the area. Identified vegetation types are old growth red, white pine and cedar stands. Identified landscape types are the glacial outwash till deposited over metavolcanic bedrock. Recreational activities that do not compromise the site's integrity will be promoted.

Additional Comments: _____

Recommendations: In order to fully utilize the recreational potential of this site, access must be improved. At present only float planes or canoeists from the southern end of the reserve can access the park. Local demand for more recreational areas should be examined and action should be performed based on the response.

PART 2 – Human Influences

Established campsites Y N # Sites None
Size _____ Soil Type _____ Slope _____
Distance to Water _____ % Vegetation Cover _____
Comments/Details No campsites were observed but there are
plenty of opportunities for their establishment.

Established canoe routes Y N # Routes None
Comments/Details _____

Portages Y N # Portages None
Comments/Details There is potential for the establishment of
portages between many of the lakes in the reserve.

Established hiking trails Y N # Trails None
Comments/Details Potential for their establishment exists

Snowmobile trails Y N # Trails None
Comments/Details _____

ATV trails Y N # Trails None # ATV Users Seen None
Comments/Details _____

Existing informal access points Y N # Access points None
Comments/Details _____

Existing formal access point (road & parking) Y N # Access points None Privy? Y N
Comments/Details _____

Existing boat caches Y N # Boat caches None
Comments/Details _____

Hunt camp Y N # Camps None

Comments/Details _____

Trapping Y N # Trappers FF33 # Trap lines 1
Comments/Details The trapline is nonnative. No evidence of active trapping were noticed.

Trapper cabins Y N # Cabins None
Comments/Details No cabins were seen on this trip.

Resort/lodge in park Y N # Buildings None
Type of clientele _____
Comments/Details _____

Resort/lodge adjacent to park Y N # Buildings None
Type of clientele _____
Comments/Details _____

Outpost camp in park Y N # Buildings 3
Type of clientele Recreationalists
Comments/Details Though the camp is located within the park it only provides access to the adjacent lakes Harris and Missus.

Outpost camp adjacent to park Y N # Buildings None
Type of clientele _____
Comments/Details _____

Historic sites/structures Y N
Comments/Details None were seen at this time.

Mining Y N

Comments/Details There are two mining claims in the area but no evidence of mining was noticed.

Mining adjacent to park Y N
 Comments/Details There are 3 adjacent mining claims to manitou conservation area. No evidence of mining activities were observed.

Current mining exploration Y N
 Comments/Details There are two mining claims within the park.

Evidence of past exploration Y N
 Comments/Details _____

Inholdings Y N # Inholdings _____
 Comments/Details 2 mining claims on the Southeastern corner of the conservation reserve.

Transmission lines Y N # Lines None
 Comments/Details _____

Rights-of-way Y N # Rights-of-way None
 Comments/Details _____

Towers Y N # Towers None
 Comments/Details (Type of tower) _____

Wild Rice Harvesting Y N # Harvest Areas None # Harvesters _____
 Comments/Details _____

Water impoundments Y N # Impoundments None

Comments/Details _____

Roads

Y N # Roads None
Comments/Details (Type of road) _____

Other human-made structures:

_____ Y N # _____
Comments/Details _____

_____ Y N # _____
Comments/Details _____

Additional Comments: The mining claims within the park will be inholdings. If at such time the mining claim expires, it will not be renewed and the inholdings will be assimilated into the park. If the claim owner wishes to develop a mine. These areas will continue to be inholdings and other equivalent areas will be selected to be part of the park.

Recommendations: _____

Map

Attached.

OLL Recreational Inventory

Employee Name John Munroe

Date 17/10/2000

Park Name Manitou Conservation Reserve

Local Name C2337

County N/A

Township N/A

NOTE: Ground/Water Survey

PART 1 – Basic Recreation Opportunities

- Backcountry camping N Estimated # Tents/Parties Seen None
Comments/Details There are abundant camping opportunities on Harris Lake, Manitou Stretch and interior lakes.
- Canoeing N Estimated # Canoes Seen None
Comments/Details There is an interconnected infrastructure of lakes and rivers throughout the area. A series of small lakes and portages forms a route on the east side of the area between Manitou Stretch and Harris Lake. There is fair potential for use by canoeists. The Manitou system is an established canoe route which passes along the southern boundary of the area.
- Hiking N Estimated # Hikers Seen None
Comments/Details No existing trails were observed during this reconnaissance. Trails would need to be created before extensive hiking opportunities become available in the reserve. The topography is variable, with frequent bedrock ridges running NE/SW forming obstacles to north and south travel on foot.
- Hunting N Estimated # Hunters Seen None
Comments/Details This survey was performed during hunting season, however, no hunting activities or evidence was observed. Weekend activity may have been higher. Opportunities exist for those interested in water access hunting. Direct access, particularly road access, may discourage some, and alternative opportunities abound in the surrounding areas.
- Fishing – recreational N Estimated # Fishing Boats Seen None
Comments/Details This survey was conducted late in the season and boats observed seemed to be camp owners involved in closing their camps for the season. Weekend activity may have been higher. The area, particularly Harris Lake and Manitou Stretch, is known to be heavily-fished. (refer to attached aerial boat survey)

Lakes

Y N % of Lakes Seen 23%

Comments/Details **The internal lakes, with the exception of Gates Lake, were not observed. Most of the internal lakes are small and shallow. The lakes observed included Gates, Grant, Napanee, Toronto, Harris and Manitou Stretch. These lakes were all clearwater lakes, although the smaller ones tended to be shallow.**

Swimming opportunities

Y N

Comments/Details **The lakes adjacent to this area represent the best opportunities. Refer to September survey notes.**

Beaches

Y N # Beaches Seen None

Comments/Details **Refer to September survey notes..**

Rapids/waterfalls

Y N # Rapids/waterfalls Seen 7

Comments/Details **Small rapids and falls were observed between Manitou Stretch and the small unnamed lake connecting to Grant Lake; Between this unnamed lake and Grant Lake; at the inflow to Grant Lake from Napanee Lake; a long series of rapids and falls over the first half of the creek flowing out of Napanee Lake; between Napanee Lake and Toronto Lake; between Harris and Toronto Lake; and at the outlet to Gates Lake.**

Other recreational/scenic features:

Mature Pw, Pr & Ce

Y N # Seen Variable; common throughout.

Comments/Details **These areas have high aesthetical values, with the greatest concentrations occurring south of Harris Lake and north of Manitou Stretch, and are best observed from these waters. The shorelines of the lakes are variable, ranging from vertical bedrock faces to cobbles fronting relatively low relief.**

_____ Y N # Seen _____

Comments/Details _____

_____ Y N # Seen _____

Comments/Details _____

Summary of Area Description and Land Use Intent provided in Appendix A of the Land Use Strategy, July 1999, with specific reference to recreation uses and features: **The primary purpose of this conservation reserve is the conservation of the unique landscape and vegetation types of the area. Identified vegetation types are old growth red, white pine and cedar stands. Identified landscape types are the glacial outwash till deposited over metavolcanic bedrock. Recreational activities that do not compromise the site's integrity will be promoted.**

Additional Comments: **Access limits much of the potential use of the interior for recreational purposes. The area with greatest immediate potential are the adjacent larger waterbodies such as Harris Lake and Manitou Stretch.**

Recommendations: **Hunting, fishing and other backcountry pursuits represent the greatest immediate recreational potential. Access to the white pin, red pine and cedar which represent the primary features of this Conservation Reserve, may be accessed moderately easily from the waters of Manitou Stretch. Trail or other access development may be possible subject to review.**

PART 2 – Human Influences

- Established campsites Y N # Sites Sporadic - subject to interpretation
Size Variable Soil Type Sandy Loam Slope Flat to 10%
Distance to Water Nil % Vegetation Cover Clear
Comments/Details Several apparent campsites were observed, but it was difficult to differentiate between heavily-used areas employed for fishermen's shore lunches and bonafide campsites, since the areas tend to have similar attributes. Multiple sites were observed on Manitou Stretch, probably associated with use as a canoe route, but only one was observed on the chain between Harris and Manitou Stretch. The evidence seems to suggest heavy day-use by cottagers, daytrippers and guests of tourist establishments.
- Established canoe routes Y N # Routes None, formally
Comments/Details The Manitou Lakes are an established route, passing along the south boundary of the area. A series of small lakes and portages forms a route on the east side of the area between Manitou Stretch and Harris Lake, but present use is primarily to access Harris Lake as a destination, and return. Portages to gain access to interior lakes are similarly destination-oriented. A route circumnavigating the area, returning to Manitou Stretch from Harris via Mister and Cross Lakes may be possible, but no such established route was observed.
- Portages Y N # Portages 7 observed
Comments/Details Several portages exist corresponding to the falls/rapids observed and noted above. Between Manitou Stretch and the unnamed lake the portage is short (<30 m.), and flat. The second portage into Grant Lake is approximately the same, but it is possible to line a boat upstream during high water. The first portage north of Grant Lake is short (<30 m.), and boats may also be lined up this short fast water under certain conditions. The portage along the outflow from Napanee Lake is the longest of this route and the most rugged, at approximately 150 metres. The portage into Toronto Lake is short (<30 m.), but the landing is shallow and strewn with boulders just beneath the surface of the water. A portage into Harris Lake from Toronto Lake could not be located, evidence suggesting that, in high water boats pass unobstructed or are lined the short narrows between the lakes. This passage was difficult to negotiate with the low water conditions at the time, being very bouldery.
- Established hiking trails Y N # Trails None

Comments/Details **Much of the area consists of rugged topography, and is relatively remote.**

Snowmobile trails Y N # Trails None observed
 Comments/Details **It is assumed that portage routes to Harris Lake are used sporadically and informally as snowmachine routes by ice fishermen in winter. Chainsaw cuts observed on some fallen timber tends to support this.**

ATV trails Y N # Trails None # ATV Users Seen None
 Comments/Details **ATV's would require transport by water to access the area**

Existing informal access points Y N # Access points None
 Comments/Details **Primary access is by water via Manitou Stretch from the access point on Esox Lake.**

Existing formal access point (road & parking) Y N # Access points None Privy? Y N
 Comments/Details **Initial access via Esox Lake landing - ample parking for vehicles and trailers; boat launch ramp, no dock, no waste disposal, no privy.**

Existing boat caches Y N # Boat caches 4
 Comments/Details **Boat caches were observed along the eastern portage route, two between Napanee and Grant Lakes; one between Napanee and Toronto Lakes; and one on Gates Lake**

Hunt camp Y N # Camps None*
 Comments/Details ***A main base tourist establishment is located adjacent to the area on Harris Lake, with others nearby. An outpost cabin is located on Grant Lake near the Conservation Reserve, and one private camp exists on Manitou Stretch and one on an island in Gates Lake.**

Trapping Y N # Trappers FF33 # Trap lines 1
 Comments/Details _____

Trapper cabins Y N # Cabins 1
 Comments/Details **Cabin located on shore of Manitou Stretch. This cabin was investigated and found to include a substantial dock, a mowed lawn (c/w power lawnmower), lawn furnishings and other amenities suggesting significant seasonal use outside of the trapping season.**

Resort/lodge in park Y N # Buildings None
 Type of clientele _____

Comments/Details _____

Resort/lodge adjacent to park Y N # Buildings 3
Type of clientele Primarily recreational fishermen
Comments/Details Located on west side of peninsula on
Harris Lake, northwest side of Conservation Reserve

Outpost camp in park Y N # Buildings None
Type of clientele _____
Comments/Details _____

Outpost camp adjacent to park Y N # Buildings 1
Type of clientele Primarily recreational fishermen
Comments/Details Located on south shore of Grant Lake,
east side of Conservation Reserve

Historic sites/structures Y N
Comments/Details None observed.

Mining Y N
Comments/Details There are two active mining claims in the
area but no evidence of mining activity was observed.

Mining adjacent to park Y N
Comments/Details There are 3 mining claims adjacent to
Manitou Conservation Reserve. No evidence of mining
activities were observed.

Current mining exploration Y N
Comments/Details There are two mining claims within the
area.

Evidence of past exploration Y N
Comments/Details _____

Inholdings Y N # Inholdings 3
Comments/Details 2 mining claims on the Southeastern
corner of the conservation reserve. One private parcel on an
island in Gates Lake. All other parcels are adjacent and not
considered inholdings.



Transmission lines Y N # Lines None
Comments/Details _____

Rights-of-way Y N # Rights-of-way None
Comments/Details _____

Towers Y N # Towers None
Comments/Details (Type of tower) _____

Wild Rice Harvesting Y N # Harvest Areas None # Harvesters _____
Comments/Details _____

Water impoundments Y N # Impoundments None
Comments/Details Water level on Manitou Stretch is
controlled by dam at outlet of Esox Lake.

Roads Y N # Roads None
Comments/Details (Type of road) _____

Other human-made structures:

_____ Y N # _____
Comments/Details _____

_____ Y N # _____
Comments/Details _____

Additional Comments: The mining claims within the park will be inholdings. If at such time the mining claim expires, it will not be renewed and the inholdings will be assimilated into the park. If the claim owner wishes to develop a mine, these areas will continue to be inholdings and other equivalent areas will be selected to be part of the park. The remote

cabin inholding on the island in Gates Lake does not represent a compromise of the values of the Conservation Reserve.

Recommendations: **___No additional recreational development is considered necessary at this time. Traditional recreational activities should be allowed to continue subject to applicable legislation and policies.**_____

Map

Attached.

OLL Recreational Inventory

Employee Name Richard Baycroft Date 14/02/2001

Park Name Manitou Conservation Reserve Local Name C2337

County N/A Township N/A

NOTE: Supplementary Winter Aerial Survey (refer also to surveys dated 17/10/2000 and 06/09/2000)

PART 1 – Basic Recreation Opportunities

- Backcountry camping Y N Estimated # Tents/Parties Seen None
Comments/Details The survey was conducted outside the normal camping season.
- Canoeing Y N Estimated # Canoes Seen None
Comments/Details The survey was conducted outside the normal canoeing season.
- Hiking Y N Estimated # Hikers Seen None
Comments/Details The survey was conducted outside the normal hiking season.
- Hunting Y N Estimated # Hunters Seen None
Comments/Details The survey was conducted outside the normal hunting season.
- Fishing – recreational Y N Estimated # Fishing Boats Seen None
Comments/Details Opportunities exist, particularly for lake trout, but no signs of recreational ice fishing within site.
- Lakes Y N % of Lakes Seen 100% (14)
Comments/Details All lakes within the site were observed during the flight.
- Swimming opportunities Y N
Comments/Details The survey was conducted outside the normal swimming season. Refer to September/October survey notes.
- Beaches Y N # Beaches Seen None
Comments/Details Refer to September/October survey notes.
- Rapids/waterfalls Y N # Rapids/waterfalls Seen None
Comments/Details Refer to September/October survey notes.

Other recreational/scenic features:

Refer to Sept./Oct. Surveys Y N # Seen _____
Comments/Details _____

_____ Y N # Seen _____
Comments/Details _____

_____ Y N # Seen _____
Comments/Details _____

Summary of Area Description and Land Use Intent provided in Appendix A of the Land Use Strategy, July 1999, with specific reference to recreation uses and features: **The primary purpose of this conservation reserve is the conservation of the unique landscape and vegetation types of the area. Identified vegetation types are old growth red, white pine and cedar stands. Identified landscape types are the glacial outwash till deposited over metavolcanic bedrock. Recreational activities that do not compromise the site's integrity will be promoted.**

Additional Comments: **Due to the time of year recreational uses of the site are limited. Expected to see signs of an active ice fishery, but no signs of this were observed within site during flight.**

Recommendations: **Winter recreational opportunities do exist within the site (ice fishing, cross country skiing, etc.) but remoteness limits use.**

PART 2 – Human Influences

- Established campsites Y # Sites None observed
 Size N/A Soil Type N/A Slope N/A
 Distance to Water N/A % Vegetation Cover N/A
 Comments/Details Refer to September/October survey notes.
- Established canoe routes Y # Routes None, formally
 Comments/Details Refer to September/October survey notes.
- Portages Y # Portages None observed
 Comments/Details Refer to September/October survey notes.
- Established hiking trails Y # Trails None
 Comments/Details Much of the area consists of rugged topography, and is relatively remote.
- Snowmobile trails N # Trails None observed
 Comments/Details Snowmobile trails observed surrounding site, indicating some winter use of the area. Most are access trails to lakes that are heavily fished surrounding the CR (i.e. Harris, Manitou). Many trails starting from Trappers cabin on southern edge of site. (See Attached Map).
- ATV trails Y # Trails None # ATV Users Seen None
 Comments/Details _____
- Existing informal access points Y # Access points None
 Comments/Details Primary access is via trails on Manitou Stretch from the access point on Esox Lake, and possibly through Dogfly Lake off the Cedar Narrows Road.
- Existing formal access point (road & parking) Y # Access points None Privy? Y
 Comments/Details Initial access via Esox Lake landing - the Cedar Narrows Road is usually open in winter, although parking may be problematic, and the risk from heavy log haul trucks may be greater at this time of year due to R.O.W. width.
- Existing boat caches N # Boat caches 4
 Comments/Details Boat caches were observed along the eastern portage route, two between Napanee and Grant Lakes; one between Napanee and Toronto Lakes; and one on Gates Lake
- Hunt camp Y # Camps None*

Comments/Details *A main base tourist establishment is located adjacent to the area on Harris Lake, with others nearby. An outpost cabin is located on Grant Lake near the Conservation Reserve, and one private camp exists on Manitou Stretch and one on an island in Gates Lake.

Trapping Y N # Trappers FF33 # Trap lines 1
Comments/Details trapper seems to be working area to south of site.

Trapper cabins Y N # Cabins 1
Comments/Details Trappers cabin to south of site visibly in use. (snowmachine tracks)

Resort/lodge in park Y N # Buildings None
Type of clientele _____
Comments/Details _____

Resort/lodge adjacent to park Y N # Buildings 3
Type of clientele Primarily recreational fishermen
Comments/Details Located on west side of peninsula on Harris Lake, northwest side of Conservation Reserve, closed in winter.

Outpost camp in park Y N # Buildings None
Type of clientele _____
Comments/Details _____

Outpost camp adjacent to park Y N # Buildings 1
Type of clientele Primarily recreational fishermen
Comments/Details Located on south shore of Grant Lake, east side of Conservation Reserve, closed in winter.

Historic sites/structures Y N
Comments/Details None observed.

Mining Y N
Comments/Details There are two active mining claims in the area but no evidence of mining activity was observed.

Mining adjacent to park Y N

Comments/Details **There are 3 mining claims adjacent to Manitou Conservation Reserve. No evidence of mining activities were observed.**

Current mining exploration Y N
Comments/Details **There are two mining claims within the area.**

Evidence of past exploration Y N
Comments/Details _____

Inholdings Y N # Inholdings 3
Comments/Details **2 mining claims on the Southeastern corner of the conservation reserve. One private parcel on an island in Gates Lake. All other parcels are adjacent and not considered inholdings.**

Transmission lines Y N # Lines None
Comments/Details _____

Rights-of-way Y N # Rights-of-way None
Comments/Details _____

Towers Y N # Towers None
Comments/Details (Type of tower) _____

Wild Rice Harvesting Y N # Harvest Areas None # Harvesters _____
Comments/Details _____

Water impoundments Y N # Impoundments None
Comments/Details **Water level on Manitou Stretch is controlled by dam at outlet of Esox Lake.**

Roads Y N # Roads None
Comments/Details (Type of road) _____

Other human-made structures:

_____ Y N # _____
Comments/Details _____

_____ Y N # _____
Comments/Details _____

Additional Comments: **Due to the time of year very little activity was sighted within the area flown, evidence of snowmachine use and an active ice fishery were expected and noted during this flight. See attached map for further details.**

Recommendations: **No additional recreational development is considered necessary at this time. Traditional recreational activities should be allowed to continue subject to applicable legislation and policies.**

Map

Attached.

Values Map 1

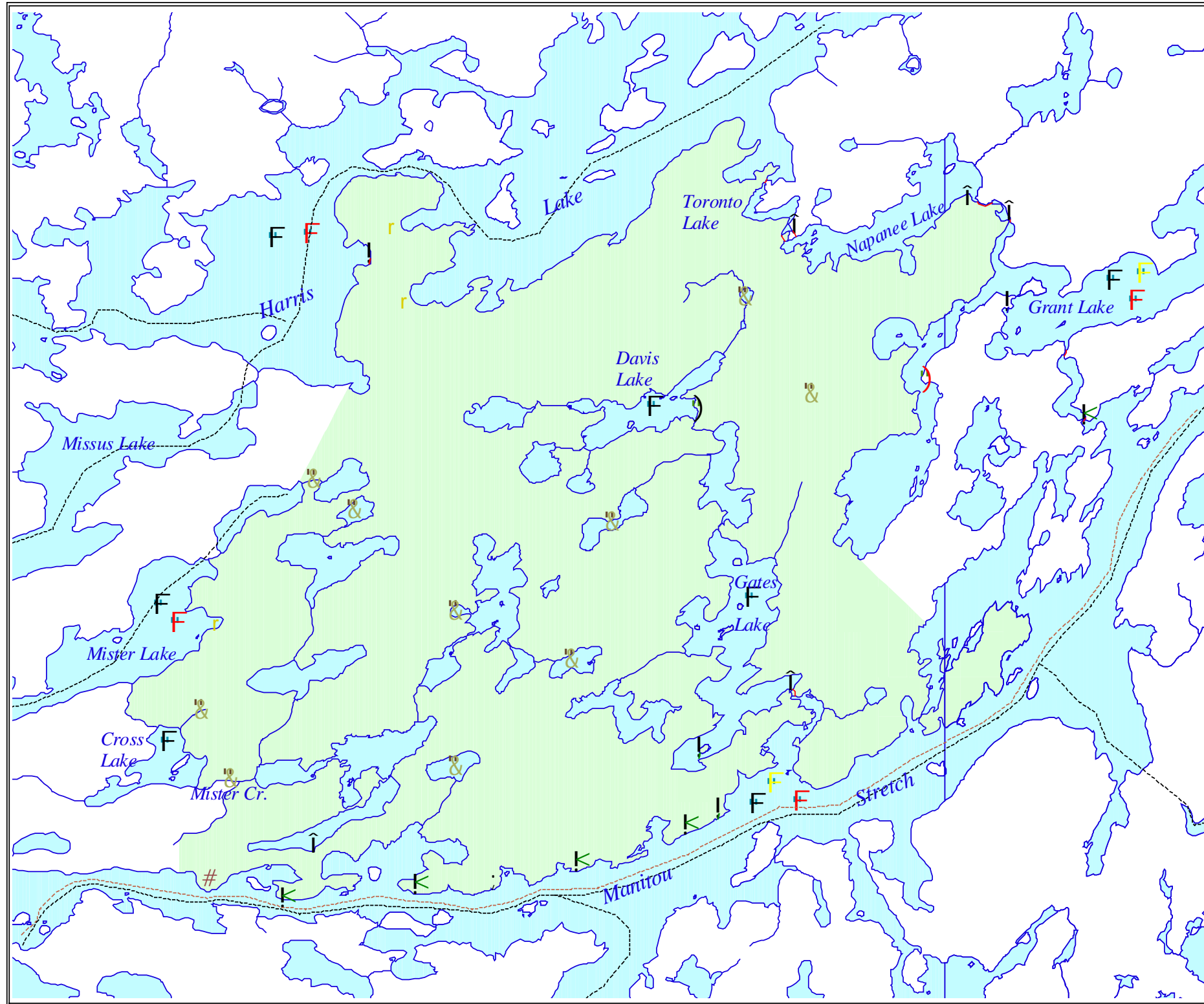
MANITOU Conservation Reserve C2337

Map Overview

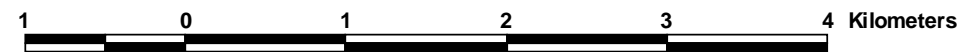
- Conservation Reserve
- Lakes
- Forest Reserve
- Rivers and Streams

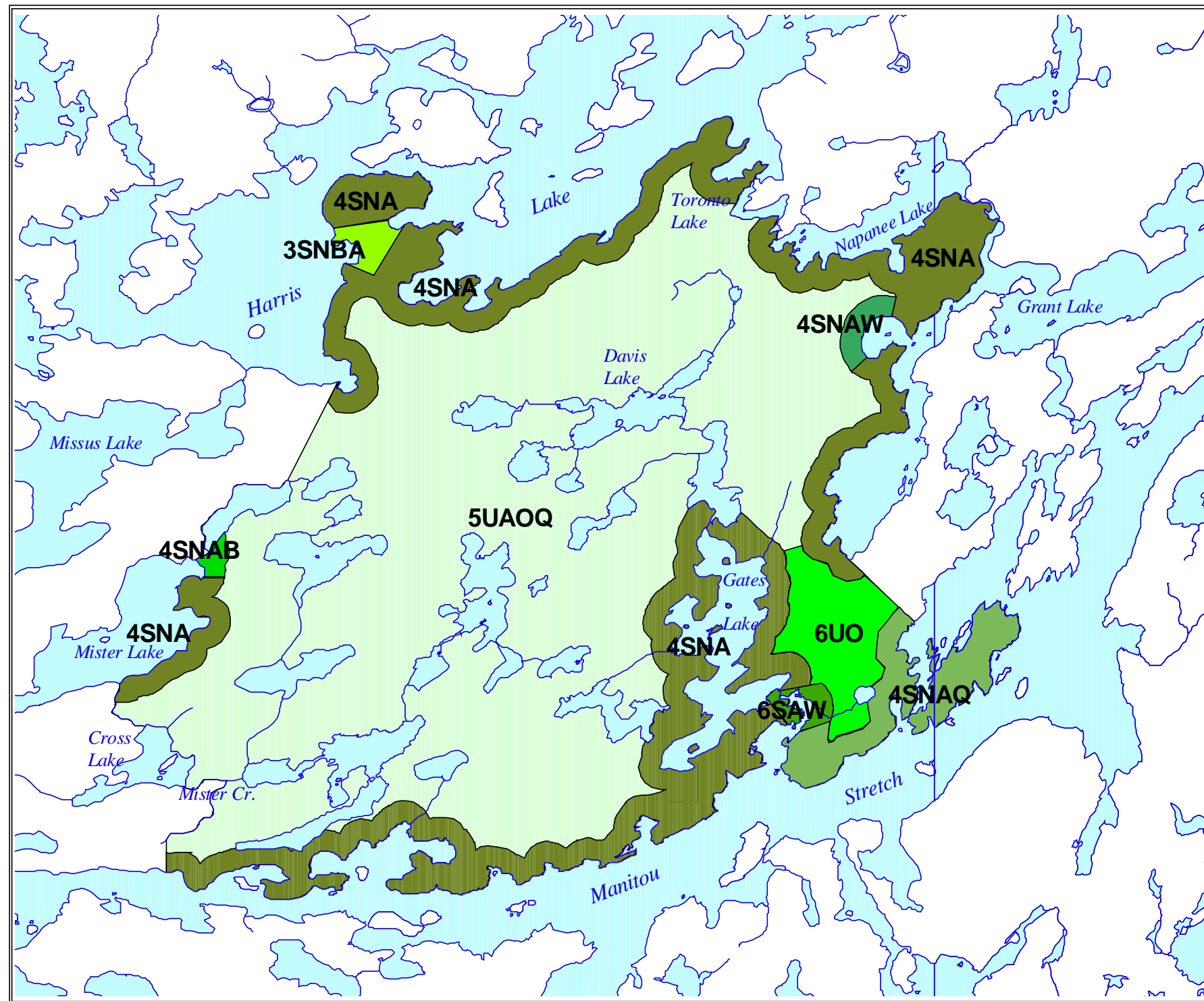
LEGEND

- | | |
|--|--|
| <ul style="list-style-type: none"> Travel Canoe Route Portage Snowmachine Trail | <ul style="list-style-type: none"> Boat Cache Campsite Cottage Eagle Nest Esker Lake Trout Lodge MAFA Northern Pike Osprey Nest Outpost Cabin Sand Beach Smallmouth Bass Trapper Cabin |
|--|--|



This map is illustrative only. Do not rely on it as being a precise indicator of routes, locations of features, nor as a guide to navigation.
 Designed and produced by: Fort Frances District Information Management, Ministry of Natural Resources.
 Projection: UTM, NAD 27, Meters, Zone 15





Values Map 2

**MANITOU
Conservation Reserve**

C2337

Map Overview

- Conservation Reserve
- Lakes
- Rivers and Streams

CLASSIFICATION

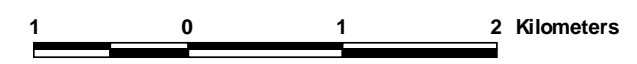
- 1 to 7 Capability Class (1 = high, 7 = low)
- S Shoreland
- U Upland

FEATURES

- A Angling
- B Beach
- N Lodging
- O Upland Wildlife
- Q Topographic Patterns
- W Wetland Wildlife

Canada Land Inventory
Land Capability Classification
For Outdoor Recreation

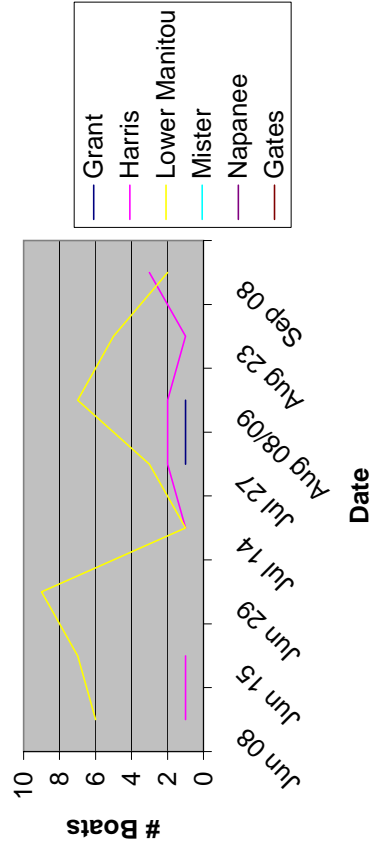
This map is illustrative only. Do not rely on it as being a precise indicator of routes, locations of features, nor as a guide to navigation.
Designed and produced by: Fort Frances District Information Management, Ministry of Natural Resources.
Projection: UTM, NAD 27, Meters, Zone 15



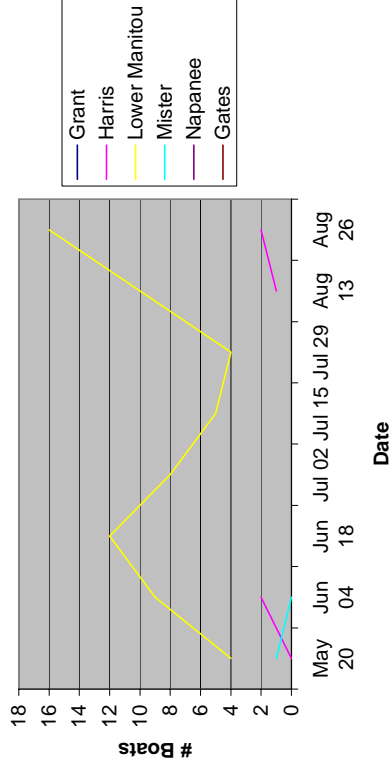
AERIAL BOAT COUNT 2000 - Manitou Conservation Reserve

CR	LAKE	QUATERNARY WATERSHED	Lake Area (ha)	# BOATS												TOTAL						
				WORKDAYS						NON-WORKDAYS												
				Jun 08	Jun 15	Jun 29	Jul 14	Jul 27	Aug 09/09	Aug 23	Sep 08	Stotal	May 20	Jun 04	Jun 18	Jul 02	Jul 15	Jul 29	Aug 13	Aug 26	Stotal	
Manitou	Grant	5PB-4	366	1	1	1	1	1	1	1	2	5	4	2	12	8	5	1	1	1	1	1
Manitou	Harris	5PB-4	1805	1	1	2	2	2	2	1	3	11	4	9	12	8	5	4	10	2	2	5
Manitou	Lower Manitou	5PB-4	8285	6	7	9	1	3	5	2	40	0	1	9	12	8	5	10	16	16	68	
Manitou	Mister	5PB-4	21	1	1	1	1	1	1	1	0	0	1	1	1	1	1	1	1	1	1	1
Manitou	Napanee	5PB-4		1	1	1	1	1	1	1	1	1	1	1	1	1	1	1	1	1	1	1
Manitou	Gates	5PB-4									0	0	0	0	0	0	0	0	0	0	0	0
	Subtotal		10477	9	8	9	2	6	10	6	7	57	5	11	12	9	5	5	11	19	77	

WORKDAY SURVEY



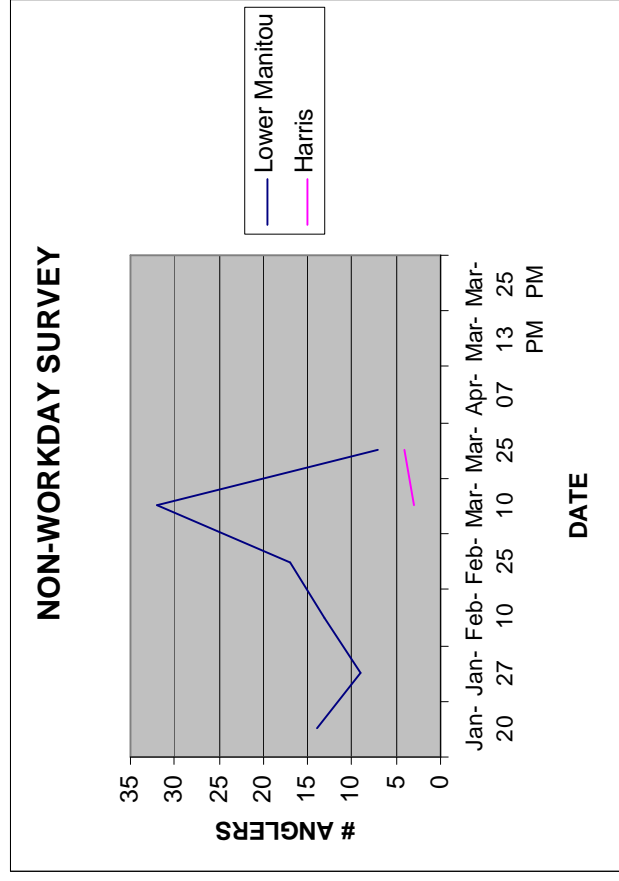
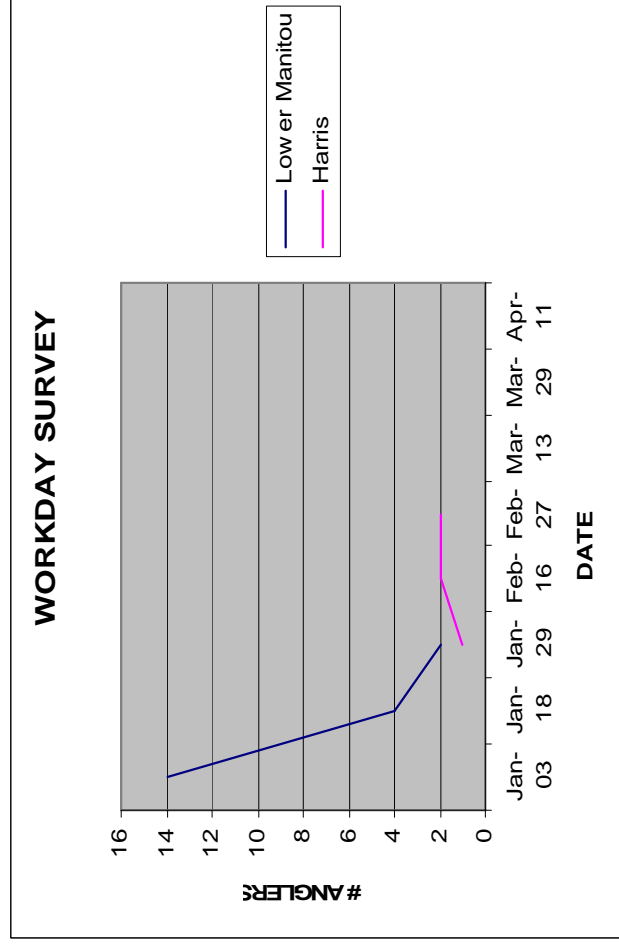
NON-WORKDAY SURVEY



WINTER ANGLER COUNT 2001 - WATERSHED 5PB (Sectors 1 & 2)

MANITOU CONSERVATION RESERVE

SECTOR	LAKE	QUATERNARY WATERSHED	Lake Area (ha)	WORKDAYS										NON-WORKDAYS																		
				Jan-03	Jan-18	Jan-29	Feb-16	Feb-27	Mar-13	Mar-29	Apr-11	Subtotal	Jan-20	Jan-27	Feb-10	Feb-25	Mar-10	Mar-25	Apr-07	Subtotal	TOTAL	Mar-13 PM	Mar-25 PM									
Angler	Lower Manitou	5PB-4	8285	14	4	2		4				2						26	14	9	13	17	32	7					92	118		
Angler	Harris	5PB-4	1805	4		1	2	2									1	10		10			3	4					17	27		
	Subtotal		10090	18	4	3	2	6	0	2	1	1	36	14	19	13	17	35	11	0	109	145	0	0	0	0	0	145	0	0	0	



Appendix B
Photos of Manitou Site

Appendix B: *Manitou Statement of Conservation Interest*



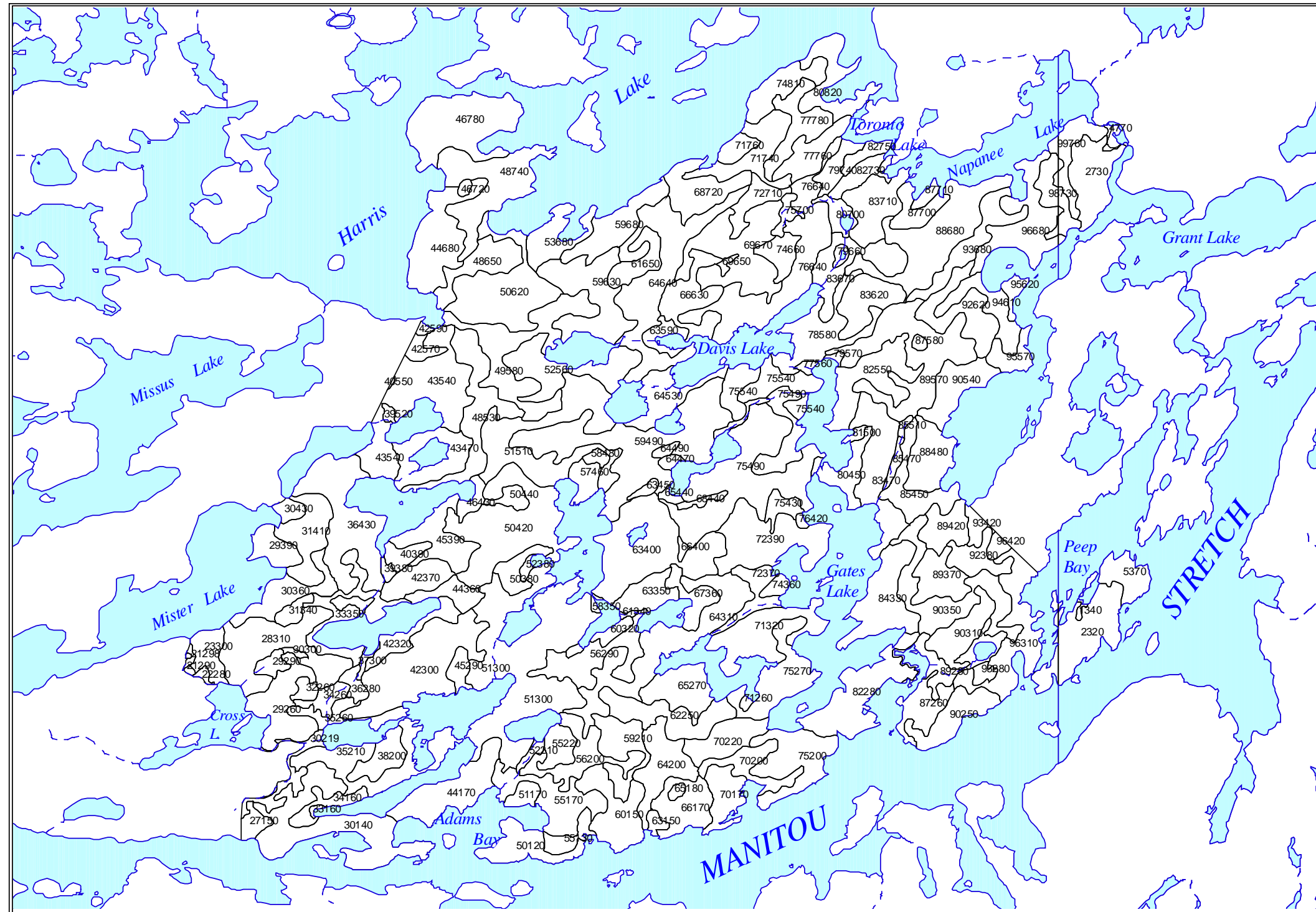
Figure B1: Aerial View of Manitou CR Looking West From Grant Lake






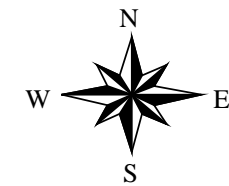
Figure B2: Shoreline of Manitou Stretch - Manitou Conservation Reserve

Appendix C
Ecosite Classification
&
Forest Resource Inventory

Figure C1: Forest Types
Manitou Conservation
Reserve



-  Rivers
-  Lakes
-  Stand Boundaries



Ontario's Living Legacy

TABLE C1: Forest Resource Inventory - Forest Stands

Stand	Hect	Age	Wg	Ht	Stkg	Site	Species Composition
350	0.3	0	0	0	0		
670	0.4	110	17	14	1	2	CE 7B 1BW 1SB 1
690	4.4	140	17	13	1	3	CE 0
700	0.2	110	17	14	1	2	CE 7B 1BW 1SB 1
740	0.4	140	17	13	1	3	CE 0
1340	0.8	0	0	0	0	0	
1770	13	100	17	14	0.7	2	CE 8BW 1PO 1
2320	30.8	110	17	13	0.7	2	CE 8PW 1SB 1
2360	1	0	0	0	0	0	
2730	25.1	110	17	13	0.5	2	CE 5B 2BW 1PO 1PW 1
4770	1	0	0	0	0	0	
5370	13.5	110	17	17	0.7	1	CE 0
21290	0.6	70	33	19	0.7	3	PO 5BW 1CE 1MS 1PW 1SW 1
21298	1	0	0	0	0	0	
21300	0.2	130	17	15	0.8	2	CE 8BW 1SB 1
22280	1.3	0	0	0	0	0	
23300	11.3	130	17	15	0.8	2	CE 8BW 1SB 1
27150	5.5	70	33	19	1	3	PO 6BW 1CE 1PR 1SB 1
28210	0.2	0	0	0	0	0	
28310	45.9	140	1	26	0.5	2	PW 4PR 2BW 1PJ 1PO 1SB 1
29180	0.1	110	17	14	0.7	2	CE 6SB 2B 1PW 1
29260	26.9	120	17	13	0.6	3	CE 6PW 2SB 2
29290	4.7	0	0	0	0	0	
29390	11.2	120	17	15	1	2	CE 9PW 1
30140	54.5	128	4	26	0.6	1	PR 6PW 3B 1
30212	0	110	17	14	0.7	2	CE 6SB 2B 1PW 1
30219	10	0	0	0	0	0	
30300	1.1	0	0	0	0	0	
30360	18.7	110	17	14	0.7	2	CE 6B 1BW 1PW 1SB 1
30430	4.2	120	17	15	1	2	CE 9PW 1
31340	5	120	17	10	0.7	4	CE 8SB 2
31410	23.6	135	17	13	1	3	CE 0
32260	3.7	0	0	0	0	0	
33160	20.8	110	17	14	0.9	2	CE 8B 1SB 1
34160	8.2	120	17	14	1	2	CE 9SB 1
34260	7	0	0	0	0	0	
35210	32.8	100	17	13	0.8	2	CE 8BW 1PW 1
35260	10.7	100	17	13	0.8	2	CE 8BW 1PW 1
36290	4.7	0	0	0	0	0	
36350	3.2	130	17	13	1	3	CE 0

Stand	Hect	Age	Wg	Ht	Stkg	Site	Species Composition
36430	49.5	100	33	21	0.3	3	PO 3BW 2MS 2CE 1PW 1SW 1
37300	1.5	0	0	0	0	0	
38200	12.3	120	17	11	1	3	CE 9SB 1
39380	1.9	0	0	0	0	0	
39520	1.5	0	0	0	0	0	
40390	6.4	140	17	13	0.7	3	CE 5SB 5
40550	0.2	130	11	15	0.9	2	SB 0
42300	54.8	140	4	20	0.5	2	PR 4PW 2CE 1MS 1PJ 1PO 1
42320	11.8	110	17	14	0.9	2	CE 8B 1SB 1
42370	14.5	85	7	13	0.6	4	PJ 5PW 2SB 2PR 1
42570	4.7	135	17	13	1	3	CE 8AB 1SB 1
42590	1.1	0	0	0	0	0	
43470	21.8	80	17	13	0.8	2	CE 7B 1BW 1PO 1
43540	53.2	60	33	18	0.7	3	PO 6BW 2CE 1MS 1
44170	29.9	120	1	21	0.5	2	PW 4CE 2PR 2BW 1SB 1
44360	9.9	100	4	19	1	2	PR 0
44680	34.9	110	17	14	0.5	2	CE 7BW 1PO 1PW 1
45290	5.6	130	17	14	1	2	CE 0
45390	21.5	90	17	14	0.7	2	CE 7B 1BW 1SB 1
46430	4.8	120	17	14	1	2	CE 0
46720	1.4	0	0	0	0	0	
46780	47.2	85	33	17	0.7	4	PO 3BW 2PJ 2AB 1B 1SW 1
48530	32.6	80	17	12	0.5	2	CE 5BW 2MS 1PJ 1PO 1
48650	18.6	65	33	20	0.7	3	PO 6CE 2BW 1PW 1
48740	41.6	110	1	21	0.7	2	PW 5PR 3BW 1PO 1
49580	44	120	17	12	1	3	CE 9AB 1
50120	19	89	17	14	0.8	2	CE 9BW 1
50380	9.1	130	17	13	0.8	3	CE 8BW 1SB 1
50420	59.6	150	1	23	0.4	2	PW 3BW 2CE 2MS 2PR 1
50440	4.9	120	17	14	1	2	CE 9BW 1
50620	46	100	17	13	0.3	2	CE 4PO 2BW 1PW 1SB 1SW 1
51170	5.3	140	1	26	0.4	2	CE 4PW 4B 1BW 1
51300	105	110	17	14	0.7	2	CE 5BW 2B 1PW 1SB 1
51510	54.5	120	17	14	1	2	CE 9BW 1
52210	2.5	0	0	0	0	0	
52380	1.6	0	0	0	0	0	
52560	30.5	100	17	14	0.6	2	CE 6BW 1PO 1PW 1SB 1
53680	16.8	110	17	14	1	2	CE 7BW 1PO 1SB 1
55130	7.5	130	17	12	0.7	3	CE 8SB 2
55170	27.4	45	33	17	0.9	2	PO 6BW 2B 1MS 1
55220	9.6	140	1	26	0.4	2	CE 4PW 4B 1BW 1

Stand	Hect	Age	Wg	Ht	Stkg	Site	Species Composition
56200	21.6	120	17	12	1	3	CE 0
56290	24.3	130	17	12	1	3	CE 0
56300	1.1	0	0	0	0	0	
57460	8	120	17	13	0.6	3	CE 3BW 2MS 2PW 2SB 1
58340	0.8	0	0	0	0	0	
58350	0.2	0	0	0	0	0	
58480	2.5	0	0	0	0	0	
59210	19.9	95	33	25	0.7	2	PO 7AB 1BW 1CE 1
59490	75	120	17	13	0.6	3	CE 3BW 2MS 2PW 2SB 1
59630	36.3	110	17	14	0.5	2	CE 4BW 2B 1MS 1PO 1PW 1
59680	22.4	55	36	14	0.7	3	BW 4CE 3PO 2B 1
60150	25.6	50	33	16	1	3	PO 8BW 1PJ 1
60320	4	120	17	15	0.7	2	CE 6BW 1PO 1PW 1SB 1
61340	0.7	0	0	0	0	0	
61650	12.2	120	17	12	1	3	CE 0
62250	25.6	130	17	12	1	3	CE 0
63150	2.7	140	17	15	0.9	2	CE 0
63350	13.2	120	17	15	0.7	2	CE 6BW 1PO 1PW 1SB 1
63400	57.4	110	17	15	0.7	2	CE 7BW 1PW 1SB 1
63450	2.2	0	0	0	0	0	
63590	6.6	0	0	0	0	0	
64200	23.7	77	36	18	0.8	2	BW 4PW 3CE 2PO 1
64310	51.7	120	17	15	0.7	2	CE 6BW 1PO 1PW 1SB 1
64470	2.1	0	0	0	0	0	
64490	2	0	0	0	0	0	
64530	17.4	80	17	13	1	2	CE 9BW 1
64640	58.3	90	17	13	0.7	2	CE 4BW 2AB 1MS 1PO 1PW 1
65180	1.7	0	0	0	0	0	
65270	20.6	110	17	15	1	2	CE 4BW 3PW 3
65440	1.8	0	0	0	0	0	
66170	19.9	69	33	18	0.9	3	PO 6BW 2CE 1SW 1
66400	1.2	0	0	0	0	0	
66630	22.7	130	17	12	1	3	CE 0
67360	10.3	130	17	12	0.8	3	CE 9SB 1
68440	2.5	0	0	0	0	0	
68720	22.4	60	33	18	0.9	3	PO 7AB 1BW 1PW 1
69650	1.4	0	0	0	0	0	
69670	45.2	120	17	14	0.9	2	CE 6BW 3SW 1
70170	15.3	70	36	15	1	3	BW 4CE 3PO 3
70200	14.5	138	17	15	0.7	2	CE 0
70220	18	63	36	17	0.6	2	BW 4B 2CE 2PO 1PW 1

TABLE C1: Forest Resource Inventory - Forest Stands

Stand	Hect	Age	Wg	Ht	Stkg	Site	Species Composition
70470	70	110	17	13	0.5	2	CE 4B 1BW 1MS 1PW 1SB 1SW 1
70540	10	120	17	14	1	2	CE 9SB 1
71260	1.1	0	0	0	0		
71320	31	110	17	12	0.7	3	CE 5SB 2B 1PO 1PW 1
71510	2.7	0	0	0	0		
71740	22.3	135	17	13	1	3	CE 9AB 1
71760	6.2	70	33	18	0.8	3	PO 6BW 2B 1SW 1
72370	11.6	130	17	13	1	3	CE 9AB 1
72390	39.9	120	17	14	0.6	2	CE 4BW 2SB 2PO 1PW 1
72710	10.6	130	17	12	1	3	CE 0
74360	3.5	110	17	12	0.7	3	CE 5SB 2B 1PO 1PW 1
74660	9.4	130	17	12	1	3	CE 0
74810	17.2	70	33	18	0.8	3	PO 6BW 2B 1SW 1
75200	30.4	101	17	16	0.8	1	CE 7PO 2SW 1
75270	28.3	120	17	15	0.8	2	CE 5PO 4SB 1
75430	6.2	130	17	13	0.9	3	CE 7AB 2SB 1
75490	14.5	130	17	13	0.9	3	CE 7AB 2SB 1
75540	16.6	110	17	13	0.5	2	CE 4B 1BW 1MS 1PW 1SB 1SW 1
75700	4.3	0	0	0	0		
76420	1	0	0	0	0		
76640	53.6	80	17	12	0.9	2	CE 8BW 2
77560	1.6	0	0	0	0		
77760	15.4	70	33	14	0.5	4	PO 4BW 2PJ 2CE 1MS 1
77780	19.3	95	33	23	0.8	3	PO 6BW 2CE 1SW 1
78580	28.1	120	17	14	1	2	CE 9SB 1
79570	1.1	0	0	0	0		
79660	1.8	0	0	0	0		
79740	8.3	110	17	11	1	3	CE 0
80450	13	120	17	15	0.9	2	CE 8PW 1SB 1
80700	5.9	0	0	0	0		
80820	21.6	100	17	12	0.8	3	CE 7AB 1BW 1PO 1
81500	1.6	0	0	0	0		
82280	36.2	110	17	14	1	2	CE 9BW 1
82550	29.3	100	17	13	1	2	CE 7BW 2SB 1
82730	8.2	145	17	13	0.9	3	CE 0
82750	5.6	110	17	14	0.8	2	CE 8PO 1SB 1
83470	34.2	110	17	12	0.7	3	CE 5BW 2B 1MS 1SB 1
83620	19.4	120	17	14	0.6	2	CE 6BW 2PJ 1SB 1
83670	23.7	120	17	11	1	3	CE 9SB 1
83710	23	120	17	14	0.7	2	CE 4BW 2PO 2MS 1SB 1
84330	31.6	110	17	15	1	2	CE 8BW 2

Stand	Hect	Age	Wg	Ht	Stkg	Site	Species Composition
84740	1	110	17	14	0.8	2	CE 8PO 1SB 1
85450	19.3	120	17	15	1	2	CE 5BW 3PO 1SB 1
85470	3.1	0	0	0	0		
85510	1.2	0	0	0	0		
87260	14.9	135	17	14	0.7	2	CE 0
87580	1.5	0	0	0	0		
87700	10.5	140	17	13	1	3	CE 0
87710	3	121	17	14	0.7	2	CE 6BW 2B 1SB 1
88480	20.8	120	17	14	0.6	2	CE 4BW 2PO 2PW 1SB 1
88680	49.6	121	17	14	0.7	2	CE 6BW 2B 1SB 1
89280	15.6	0	0	0	0		
89370	16.9	140	17	16	0.7	2	CE 7PW 2BW 1
89420	14.4	60	36	16	1	2	BW 8CE 1SW 1
89570	53.4	140	17	12	1	3	CE 9SB 1
90250	19.4	110	17	14	0.6	2	CE 6PO 4
90310	18.3	90	17	13	0.6	2	CE 7B 1PW 1SB 1
90350	35.6	144	17	12	0.9	3	CE 8BW 1SB 1
90540	19.8	80	17	12	1	2	CE 7B 1BW 1SB 1
92380	12.3	149	1	28	0.7	2	PW 5BW 3CE 1PR 1
92620	24.8	120	17	14	0.7	2	CE 6BW 2PW 1SB 1
93280	3.1	0	0	0	0		
93420	11.4	130	17	16	1	2	CE 9BW 1
93680	20.6	137	17	12	0.7	3	CE 9SB 1
94610	15.9	140	17	13	1	3	CE 9SB 1
95570	9.2	45	36	13	1	3	BW 8CE 1PO 1
95620	4.3	110	17	14	1	2	CE 7B 1BW 1SB 1
96310	43.4	110	17	14	0.9	2	CE 7BW 1PO 1PW 1
96420	24.1	120	17	10	0.6	4	CE 9B 1
96680	31.8	110	17	14	1	2	CE 7B 1BW 1SB 1
98730	7.3	140	17	13	1	3	CE 0
99290	6.7	110	17	13	0.7	2	CE 8PW 1SB 1
99680	1	140	17	13	1	3	CE 0
99730	0.5	100	17	14	0.7	2	CE 8BW 1PO 1
99760	1.2	100	17	14	0.7	2	CE 8BW 1PO 1

Table C2: Forest Ecosite Classification

Stand	Ecosite #
749	4
4044	4
432	11
3938	11
7174	12
2831	15
136	17
671	17
824	17
1234	17
2014	17
2041	17
2063	17
2283	17
2424	17
2929	17
3141	17
3635	17
4033	17
4467	17
4468	17
5038	17
5132	17
5567	17
5634	17
6134	17
6241	17
6544	17
6844	17
6948	17
7020	17
7176	17
7436	17
7974	17
8928	17
9280	17
9838	17
9973	17
1047	18
2672	18
2939	18

Stand	Ecosite #
3521	18
5921	18
6617	18
76	19
219	19
3014	19
3643	19
4259	19
4539	19
6420	19
7028	19
7466	19
7778	19
9083	19
9817	19
9873	19
180	23
5221	24
5517	24
1017	28
5620	29
6449	34
8066	34
9317	34
8758	35
674	37
819	37
856	37
1223	37
2129	37
2228	37
2763	37
3550	37
3571	37
4039	37
4230	37
4237	37
4672	37
5044	37
5224	37
5513	37

Stand	Ecosite #
5834	37
5835	37
6153	37
6165	37
6359	37
6640	37
6736	37
7047	37
7159	37
7642	37
7836	37
8069	37
8215	37
8367	37
8571	37
8770	37
8878	37
9025	37
9342	37
9914	37
9968	37
2858	39
4865	39
8771	39
9238	39
322	40
657	40
2560	40
2926	40
3628	40
2126	41
6032	41
171	42
4150	42
29	44
3335	44
3556	44
4222	44
4529	44
6451	44
7543	44

Stand	Ecosite #
123	45
523	45
748	45
1226	45
3134	45
5238	45
5377	45
5629	45
5739	45
7570	45
7850	45
8305	45
8942	45
9232	45
9330	45
9642	45
9929	45
9952	45
49	46
3030	46
5630	46

For descriptions of ecosites, refer to:
 Ministry of Natural Resources, Field guide to the
 forest ecosystem classification for northwestern
 Ontario; Second Ed. Queens Printer for Ontario,
 Manitoba Canada. 1997.

Appendix D
Permitted Uses List

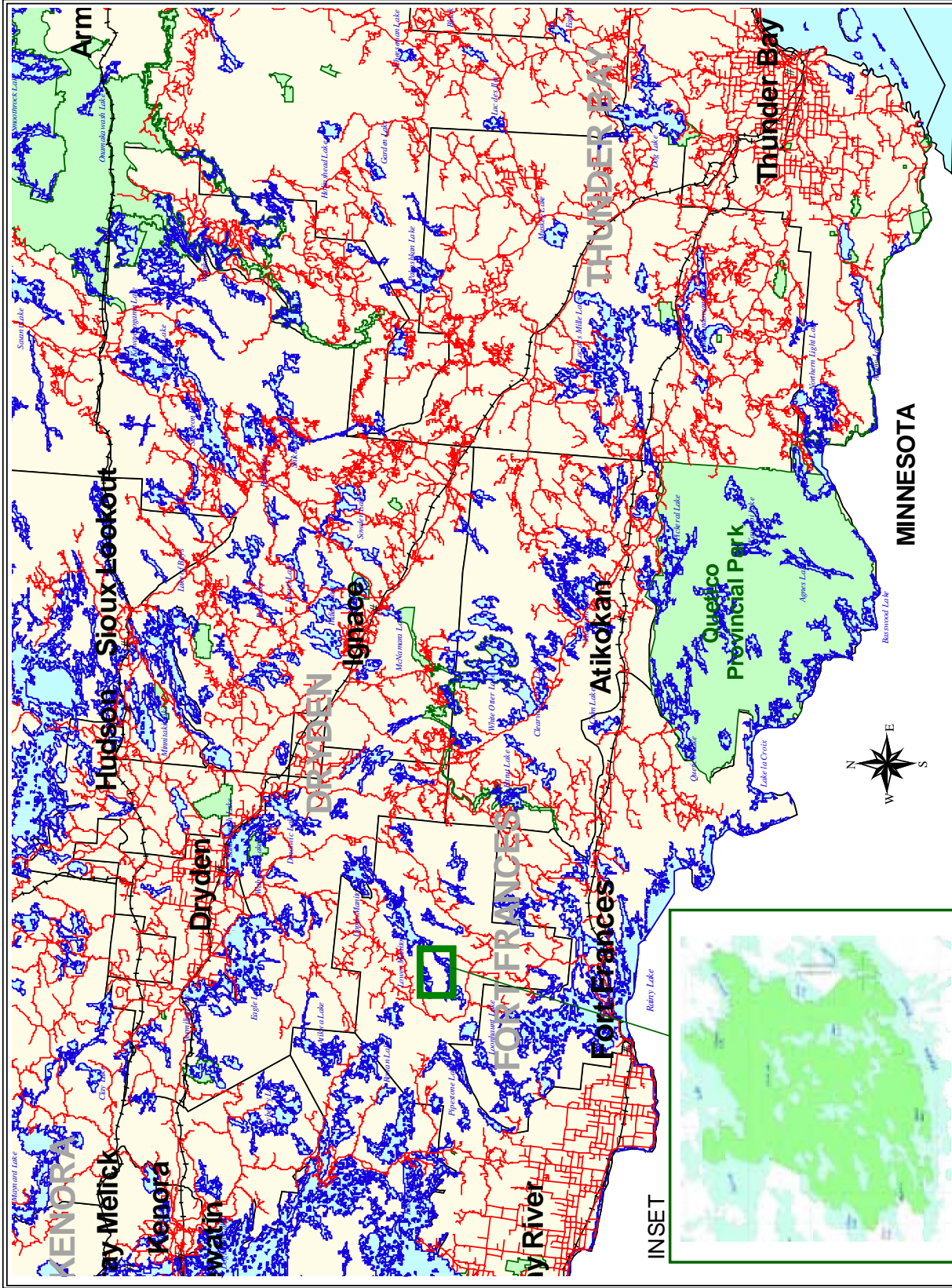
Appendix D: Manitou Permitted Uses

Activity / Value	Permitted	Not Permitted	Modified	District Manager's Approval
<i>Sport Hunting</i>	✓			
<i>Commercial Trapping</i>	✓			
<i>Baitfishing</i>	✓			
<i>Commercial Wild Rice Harvest</i>				✓
<i>Mineral Exploration and Extraction</i>		✓		
<i>Land Dispositions for Private Purposes</i>			✓	
<i>All Terrain Vehicle (ATV)</i>			✓	
<i>Snowmobiles</i>			✓	
<i>Land Claims</i>				✓
<i>Traditional Native Uses</i>	✓			
<i>Native Hunt Camps</i>				✓
<i>Commercial Tourism Based Hunting</i>	✓			
<i>Native Hunting</i>	✓			
<i>Wildlife Management</i>	✓			
<i>Commercial Forest Operations</i>		✓		
<i>Vegetation Management (ie. Herbicides)</i>		✓		
<i>Logs for Building etc.</i>		✓		
<i>Fuelwood</i>				✓
<i>Insect / Disease Suppression</i>				✓
<i>Sport Fishing</i>	✓			
<i>Commercial Fishing</i>				✓
<i>Native Fishing</i>	✓			
<i>Water Control Structures</i>		✓		
<i>Aggregate Extraction</i>		✓		
<i>Bear Management Area's</i>	✓			
<i>Trapline Cabins</i>				✓
<i>Native Wild Rice Harvest</i>	✓			
<i>Boat Caches</i>				✓
<i>Fire Management</i>	✓			
<i>Archeological Study</i>	✓			
<i>Backcountry Travel</i>	✓			
<i>Wildlife Viewing / Photography</i>	✓			
<i>Hiking</i>	✓			
<i>Rock Climbing</i>	✓			
<i>Mountain Biking</i>			✓	

Activity / Value	Permitted	Not Permitted	Modified	District Manager's Approval
<i>Nordic Skiing / Snowshoeing</i>	✓			
<i>Aircraft</i>	✓			
<i>Roads / Bridges / Culverts</i>		✓		
<i>Ongoing Research</i>	✓			
<i>New Research</i>	✓			

Note: Modified means that use may be permitted under certain circumstances, where the use would not impact the values for which the Conservation Reserve was created (i.e. new trails for snowmachines or ATV's. Refer to the text of the Statement of Conservation Interest for specific details regarding particular uses.)

Appendix E
Regional Context Map



Map Showing Location of Manitou Conservation Reserve

200 Kilometers

100

0

100

Appendix F

**F. Noble, T., Site District 4S5 Gap Analysis; Ontario Ministry of Natural Resources,
Northwest Region, 1995.**

LIFE SCIENCE CHECKSHEET

NAME: Manitou Stretch White Pine

MAP NUMBER: 52F/3

UTM: 4845,54440

COUNTY/DISTRICT: Kenora

TOWNSHIP:

HECTARES: 1800.0

OWNERSHIP: Crown

ADMINISTRATION:

FOREST REGION/SECTION: L11

SITE REGION: 4S

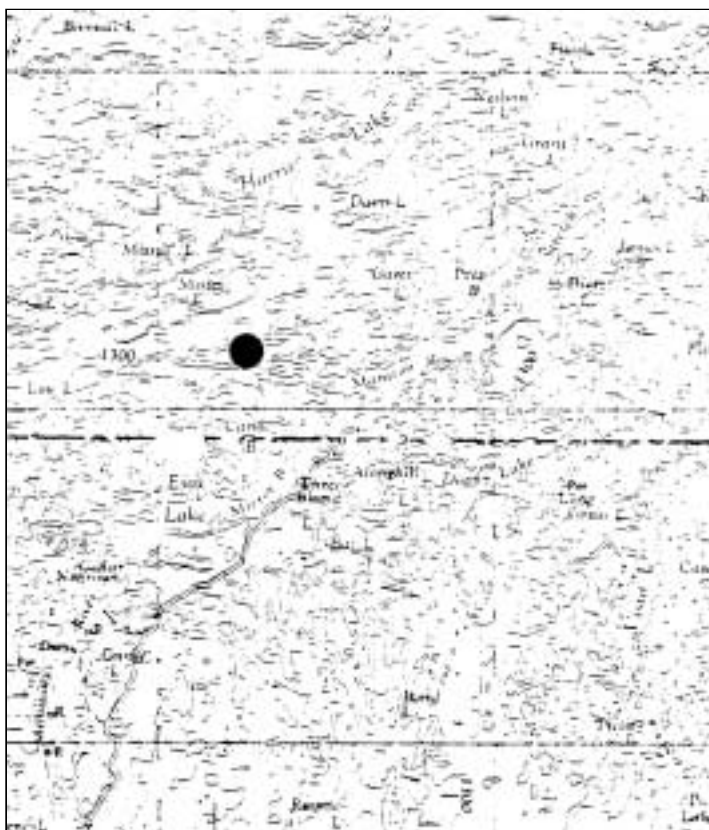
SITE DISTRICT: 4S5

MNR REGION: NW

MNR DISTRICT: FF

IBP:

SENSITIVE AREA:



DESCRIPTION:

This site is one of six selected in the Northwest Region Old Growth Study (1994) to represent old growth pine in Site District 4S5. The site is located along the north shore of Manitou Stretch. The proposed site provides good representation of old-growth white pine on rock and very shallow sands. Based on a brief helicopter reconnaissance the site appears to provide good representation of both upland and lowland cedar dominance types.

A complicating factor relating to this site is that it straddles the OLI boundary separating Site Regions 4S and 5S. The better stand of pine, however, is still within the Site District 4S5 portion. The general community representation shown here relates to the entire site. A similar situation occurs with respect to two other of the Northwest Old Growth Study sites. Based on the OLI mapping the Crossroute Lake site is situated in Site Region 5S and the Namakan Lake site is in Site Region 4W.

POTENTIAL COMMUNITY/SITE TYPE REPRESENTATION

LI	L2	L3	DOMINANT	SITE	SIG	STAND#
Barrens	Rock		Rock	W-R-VD		MS001
Forest	Coniferous	Mature	Pinus strobus	W-R-D	P6	MS002
	Coniferous	Mature	Pinus strobus	W-S-DM		MS014
	Coniferous	Mature	Thuja occidentalis	W-S-DM		MS008
	Coniferous	Mature	Thuja occidentalis	N-S-DM		MS007
	Coniferous	Mature	Thuja occidentalis	N-S-DM		MS006
	Deciduous	Mature	Betula papyrifera	N-S-DM		MS012
	Deciduous	Mature	Populus tremuloides	N-S-M		MS013

Forest	Mixed	Mature	Betula papyrifera	N-S-DM	MS011
	Mixed	Mature	Populus tremuloides	N-S-M	MS010
	Mixed	Mature	Thuja occidentalis	N-S-DM	MS009
Swamp	Coniferous	Mature	Thuja occidentalis	C-O-W	MS004
	Coniferous	Mature	Thuja occidentalis	C-O-W	MS003
	Coniferous	Mature	Thuja occidentalis	C-O-W	MS005

BIOPHYSIOGRAPHIC REPRESENTATION

UNIT	NUMBER	DESCRIPTION	RANK
la-3	5060	W brk sandy till plain (bedrock)	G

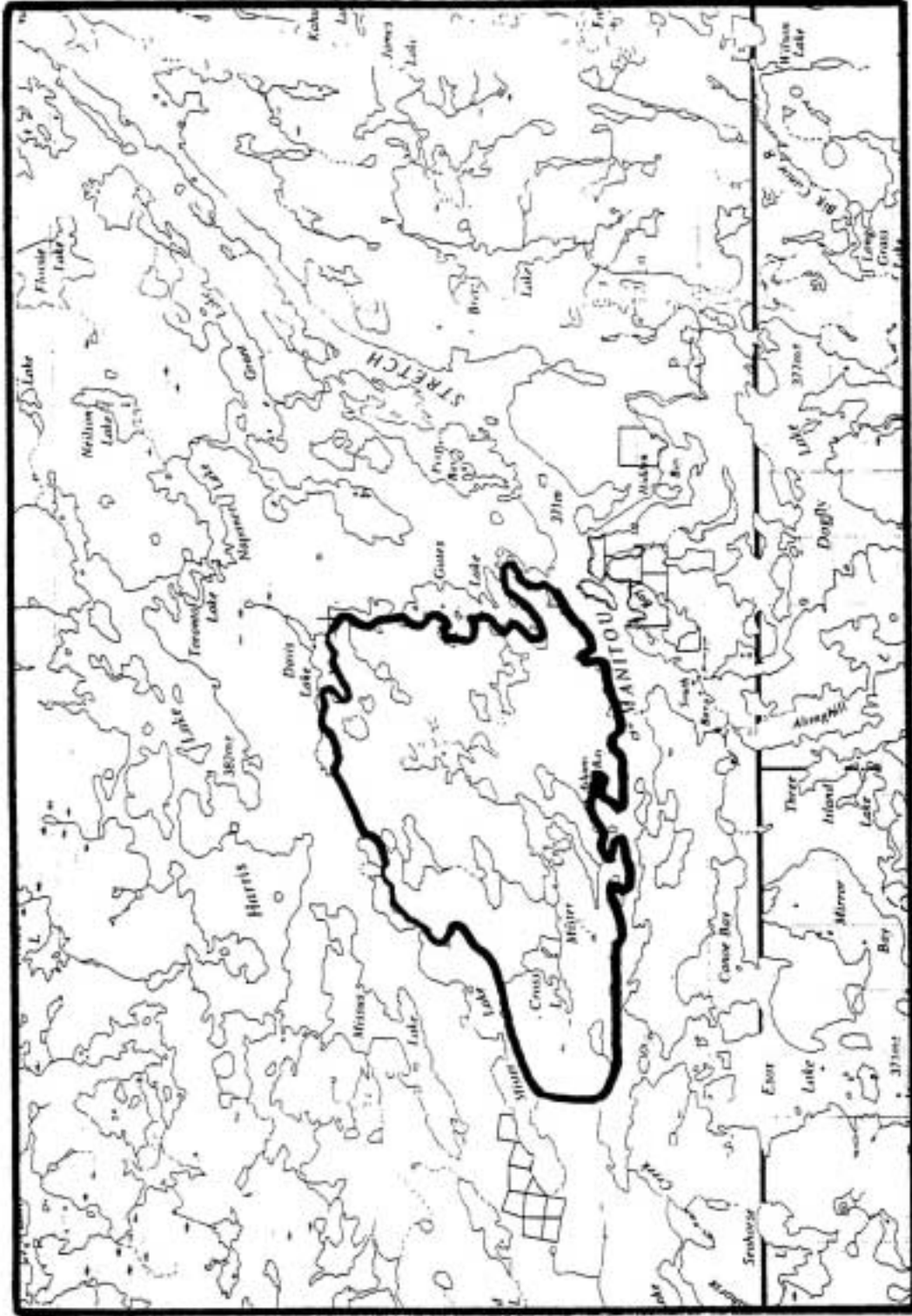
REFERENCES: NW White & Red Pine Old Growth Study

SITE SIGNIFICANCE: P6

INFORMATION LEVEL: B

COMPILER: T.W. Noble

DATE: Nov95



Manitou Stretch White Pine 52F/3 UTM484554440