



TSHITSHUE MATSHIKAUN

KA

NEKATSHIAKAN

AUEN TAN UA ISHI-INNIUNAN :

USHKAT INNUAT UTE KA TATAU
MAK MASHINNUAT

Ka tapuetakan tshetshi tshissinuatshishtakant

Ute eshi–takuat mashinaikanit, tshika tshi tshissinuatshishtakanu nutam kie ma apishish e itashtet tshetshi minu–apashtati auen kie ma mashue anite ka tanan, apu tshi atauatshenan, tshika minu–apashtakanu eka auen e natuenitamuakan, patush ishinakuaki auen tshetshi kuetshimakaniti.

Eukuan ume muk(u) e natuenitamakuin :

- tshetshi akua tutaman e itashtet tshetshi ait itashtet ne e itashtet;
- tshetshi pishkass itashteti eshinakatet ka tshissinuatshishtakan mak tshetshi uinakan auen ka tutak atusseunu;
- tshetshi uitakan e tshissinuatshishtakan ume mashinaikan Utauau–tshishe–utshimau ka unuipaniat mak apu tut uitshiakan Utauau tshishe–utshimau ka tutak.

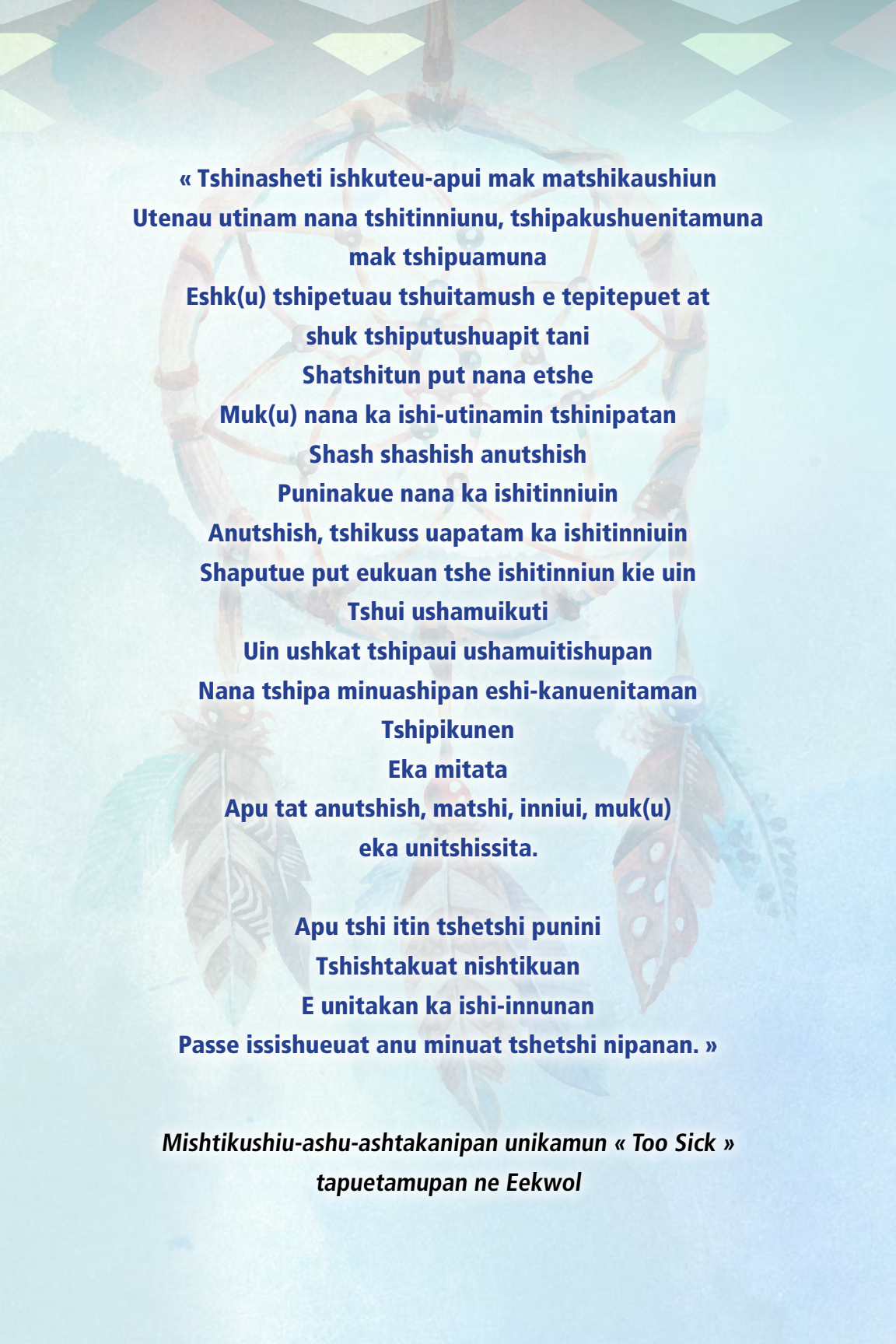
Apu tapuetakan tshetshi atauatshenan kie pimumakan ume mashinaikan, patush patshitinaki mashinaikanu e tapuetak ne Utshimatat Justice ute Canada. Anu ui tshissenitamani ute aimi Utshimatat Justice ute Canada anite natshi–uapatam site www.justice.gc.ca.

© Tshishe–utshimashkueu ka utshimaut ute Canada, Utshimau anite Justice mak ka papatshishtaitshenit ute Canada, pipun 2018 mishta tshituashun tshitapatamanua ute utatusseun.

ISBN : 978–0–660–24180–7

No Cat. : J2–366/1–2015Rm–PDF

Utshimatat Justice ute Canada nashkumeu ka mamuitiniti mashue eshpitashkamikat innua upime ka ashtaniti matshikaushiunu anite kautishkuemihit ka uitshikut tshetshi tutaki umenu mashinaikanu.



**« Tshinasheti ishkuteu-apui mak matshikaushiun
Utenau utinam nana tshitinniunu, tshipakushuenitamuna
mak tshipuamuna
Eshk(u) tshipetuau tshuitamush e tepitepuet at
shuk tshiputushuapit tani
Shatshitun put nana etshe
Muk(u) nana ka ishi-utinamin tshinipatan
Shash shashish anutshish
Puninakue nana ka ishitinniun
Anutshish, tshikuss uapatam ka ishitinniun
Shaputue put eukuan tshe ishitinniun kie uin
Tshui ushamuikuti
Uin ushkat tshipaui ushamuitishupan
Nana tshipa minuashipan eshi-kanuenitaman
Tshipikunen
Eka mitata
Apu tat anutshish, matshi, inniui, muk(u)
eka unitshissita.
Apu tshi itin tshetshi punini
Tshishtakuat nishtikuan
E unitakan ka ishi-innunan
Passe issishueuat anu minuat tshetshi nipanan. »**

***Mishtikushiu-ashu-ashtakanipan unikamun « Too Sick »
tapuetamupan ne Eekwol***

TSHEKUAN E UAUITAKAN UTE

Auen tshe minu–apashtat umenu mashinaikanissinu....	1
Tshipa tutakanu tshetshi punapaniti e nekatshiakan ka ustishkuemit	2
E utshipinan	4
Innu–ishkueuat ushkat ka tatau ute mak mashinnu–ishkueuat ute Canada.....	5
Tshekuan ne ua issishuenan « manenimakanu auen »?.....	6
« Eshpan ka manenimakan auen mak matshikaushiun ».....	11
Tan tshe ishpanitau nitauassimat?.....	13
Tshekuan ma ne uet ishinakushian nin?.....	15
Aiamieun tshishkutamatuna.....	19
Anu a minuau tshetshi taiani kie ma tshituteiani?	22
Tshek eka ui tshituteiani?.....	23
Tshek itenitaman tshetshi tshituteiani?.....	24
Ka utshepinan tutakanu	25
Auen tshe natuapamik tshetshi uitshiki?.....	27
Tshekuan tshe ishpan aimikau kamakunueshiht?.....	29
Tshekuan tshe ishpan kamakunuesht mamishimati auena ka matshikaushikatut?	31
Tshekuanu tshe ishpanitau nitauassimat ishinakuaki tshetshi tshituteiani?	33
Tanite nipa tshi mashken shutshiun mak shushteieun tshetshi tshituteiani?.....	34
Uauitakanua apissish ute essishuenan mashinaikanissit.....	37

AUEN TSHE MINU-APASHTAT UMENU MASHINAIKANISSINU

Innuat ushkat ka tatau mak mashinnuat ka nekatentakau usham e piuenimakaniht utinniunuat. Muk(u) auen — napeu kie ma ishkuueu, auass kie ma tshishennu, Innuat ushkat ka tatau kie ma mashinnuat kie ma natimik — ka nekatentak kie ma ka nekatentimiat kuataka uishamakanu tshetshi uauitshiakaniti.

Ute mashinaikanissit, Innuat ushkat ka tatau mak Mashinnuat uinuau uauinkanuat. Kuatak mashinaikanissit eshinakuat unuipanitakanipan anite e uauinakanitau Kaiassimeuat.

Tshitapata ume mashinaikaniss :

- miam ishinakuat tshetshi nekatshkuin kie ma piuenamakuin anite tshitshit — miam tshuitamush kie ma anite katsishkueminan;
- ui tutamani anu tshetshi minuenitakuat tshitshit mak anu tshetshi minueniuta tshitauassimat kie tshin;
- ishinakuat tshetshi kushpinetimin usham peik(u) tshikanish kie ma tshitshinnuat nekatshiakanuat kie ma piuenimakanuat uitshuat.

Tshika uitshikun ume mashinaikaniss :

- eshinakuat e nekatshiakan auen mak matshikaushiun anite kautishkuemit;
- apu takuak matshikaushiun mak e nekatshiakan auen anite Inuit ushkat ute ka katau kie anite Mashinniunit.

Nishtuapamat auen e kassenitak, uitamu eka e peikussit... tshika tshi uapataniau umenu mashinaikanissinu tati anite eka e kushtakunit.

Tshui uitamakun — Ute nanitu-tshissenitamun ka takuat ute mashinaikaniss apu neni tshi apashtakaniti anite tetshe kaimuatakan. Ui kashtinam katshessimuna anite kaimuakan tshika ishinakuan tshetshi ituteni anite eshpanin tshitinniunitm ishinakuan kaimit tshetshi natshi-uapamat.

TSHIPA TUTAKANU TSHETSHI PUNAPANITI E NEKATSHIAKAN KA USTISHKUEMIT

Tshissita ume :

- e nanitu–uitshikushini namieu an usham apu shutshishin — e punini e tapuetamin tshetshi piuenimakuin mak e nenekatshikuin eukuan an shutshiun;
- eshinakuaki e kashuin kie ma e shakuenamuin kie ma e shetshishiumatshuin peikuan an etenitakuat miam e matshikaushiukatakuin;
- tetshen put auenitshenat essishuetau eka tshitu tshetshi eka natu–titau tshitauassimat, kie eukuan eshinakuat anite ka utishkuemiht. Tetshen put essishuetau tshin an tshitutatishun uet ishinakushin. Apu tapuetau!

Tshipa tshi tutakanu tshetshi punipan e nenekatshiakanitau ka utishkuemiht, papeik(u) tshekuan upime tshitshishtan. Mitshet ka utishkuemiht mak utauassimuaua minupanuak kie minuenimuak.

Ume mashinaikaniss eukuata ute tshetshipan. Tshitshi mashken ute ka kukuetshimatishin kie uitakannu utaimunuaua ishkuemat kie napeuat anite innuat ushkat ka tatau kie ma matshinnuat kie uinuau ka nenekatshiakantau kie tshekuanu ka tutakau tshetshi upime ashtatau matshikaushiunu tshetshi minuashiniti utinninuau. Tshipa tshi put uitshikunau ne mashinaikaniss tshetshi tshissenitameku tshekuan tshipa tutenau tshetshi kie tshinuau minuashit tshitinninuau.





Apu peikussin!

Tshika tshi shatshiau auen eka e kassenitaman!

Tshika tshi mishkutinen tshitinniun!

E UTSHIPINAN

- Mishka tshekuan tshe tutamin tshetshi tshishpeuatishin ashit tshitauassimat — eukuan ushkat!
- Aimit kamakunueshiht kie ma kuetsham auen ka nishtuapamit tshetshi aimiti.
- Kashu tshuitsheuakan uitshit, kie kamakunueshiutshuapit, natimik anite auasse tshe kanuenimatishuin kie aiमितshuapit, tshi kanipua tutamani.
- Tepitepue kie unuitashum tshetshi pashkapamakuini e tepitepuein kie ma tshetshi petakuini kie ma tshetshi petakuini e uishamatau kamakunueshiht.



INNU-ISHKUEUAT USHKAT KA TATAU UTE MAK MASHINNU-ISHKUEUAT UTE CANADA

« ... tapueta kie ma eka tapueta, tshinanu aum anite nikan, punik(u) eshi-inniuiek(u) e kataiek(u) ... »

Taapuetamupan tshetshi mishtikushiu-ashu-ashtakanipan Christie Lee Charles, Miss Christie Lee kie ishi-nishtuapamakanu

Innuat ushkat ute ka tatau mak Mashinnuat mashue eshpitashmikanit Canada teuat — anite auenua ka taniti, innu-assit, utenassit mak katak(u) ka tanan mak utenat.

Mashue anite ka tanan, teuat e shetshitau tshetshi nekatshiakanitau eshikam tshishikua — mauat ut ui maniteua, tshetshi nekatshikutau auenua ka minuatau, nanikutini pitukamit uitshuauat. Tatatamitamishitanu innuat ka tatau ute ushkat mak mashinnuat, ka auassiuht nuash tshishennuat nekatemitauat, pikuteieuat.

Tshishissenitenan anu mitshetuat innu-ishkueuat kie napeuat e matshikaushikatanitau mak kuatakat auenitshenat ute ka tatau Canada, kie nishtuapameuat neni ka matshikaushikatakutau. Ka nanitu-tshissenitakan ka tutakan nana pipun 2009 mishta tshituashun, Statistique Canada tutamupan Innuat (Ushkat ute ka tatau, Mashinnuat mak Kaiassimeuat) eukuan shuk shuk e mamashitshemutau katshi matshikaushikatakutau utshiashuaua kie ma uitamushuaua mak at kuatakat auenitshenat eka ka innutau, mashinniutau kie ma aismetau. Eukuanat innu-ishkueu uinuau anu ka mashishkueuatakantau mak kuatakat ishikueuat ait ka ishinnuitau. Mitshetua kie ishinakuanu etshi ushukuiakanitau. Uet tshissenitakan tshitapakanipan kamakunueshiu-mashinaikana anite e uauitakaniti anite Kamakuneushiht ka mikushiht mak 300 kamakunueshiutshuapa kie, eukuata anite e uauitakan katshi nipaikanitau kie katshi unuikanitau.

Mitshet tshakuan uet ishinakuat. Eshakam pipuna, mitshet auenitshenat anite Innuat ushkat ute ka tatau mak Mashinnuat — ishikueuat mak napeuat — **PISHAKUIPANT** tshetshi natuenitakau tshetshi uitshiakanitau tshetshi itshenakanitau anite matshikaushiunit.

Tshissenitakuan animan tshetshi uitshikushinanut. Innuat ushkat ute ka tatau mak Mashinnuat eshakam tshishikua utsheshtapiuat — usham mate, e tshishtamunan, eka e minueniunan, usham ut aimuna, eka ishpish tshishkutamuakan auen, eka e minuat anite e apit, e minu-mitishut, eka e atusset, eka e minuati atusseuna kie ma usham ukashinatun. Nutam neni e uauitakaniti, animan tshetshi tapuetatishunan tshetshi mishkutshipan.

TSHITSHI NATUENITENAU tshetshi uitshikuieku tshetshi punapan ne matshikaushiun mak e nekatshikuin kie ma e nekatshiakanitau tshetauassimat, tshetshi minuashit tshitinniuuau kie tshitauassimauat utinniunuau.

TSHEKUAN NE UA ISSISHUENAN « MANENIMAKANU AUEN »?

« ... kassinu e itashiat ishkuueat anite nitshinat manenimakanipan, apu muk(u) peikutau, e metuatshenanit ushtikuanuau, uteiuat kie ma uiauat. Eukuan eshinakuat tshetshi ishinakuaki niteniteti e uitamushunanuti. Eukuan ishinakunipan tapue. Nimatentiteti peikuan eka menuat. Apu tut ishinakuanikue tapue. »

(mishtikushiu-ashu-ashtakanipan e pakuenikan mashinaikanit ka ishinikatet *Strengthening the Circle to End Violence Against Aboriginal Women, The Summit III to End Violence Against Aboriginal Women — Final Report* ka inan, ka unipanitakan anite Ontario Federation of Indian Friendship Centres, nana uapikun-pishimua pipun 2009 mishta tshituashun.)

- E manenimakuini shetshen, uss e manenimakuin, eukuan ne tshipiuenimakun.
- E piuenamakuin tshipa mashikakun, utamukun, tshipa matshi-mashikakun, tshishtikuan metuatshenanu kie anite shuniatat peikuan.
- Ushkat metshikaushiukatakuin tshipa tshi ishinakuan tshetshi utamukuini, tatshishkuini, natshinakuini kie ma miam ua utamukuini, kie tatuau ne eshinakushini.
- E matshikaushikutuakan auen kie ma nekatshiakan auen anite ka utishkuemitau kassinu auen tshi natshishkam tan ua ishinniut.

Mamitshetuit ishinakuana e matshikaushikatuakan auen kie **mishta piuenitakuana**.

Ishkuue issishuepan :

« Tshekat ninipaikuti utat peiku-pipuna. Kutshipanitanapan tshetshi tshiputaminiti nuash e nipait, nitshi ushumuti tsheshtu. »

(anite e pakuenikan mishta mashinaikanit *Les femmes autochtones et la violence familiale, Canada, Centre national d'information sur la violence dans la famille, Ottawa, Agence de la santé publique du Canada*, nana pipun 2008 mishta tshituashun.)

Uauitamupan tan ka ishi-manenimakan kie ka ishi-piuenimakan.

E utamuakan auen manenmatshkanu miam mate auen tshissenitam etshi ushukuiat auenua :

- tshitshiputaminak tshueuepauk
- tshinatshinak kie ma
- tshutamik
- tshitishkuashik
- tshutamik kie tshititshishkak
- tshuishishtikuapatik
- tshitshipauk kie ma tshimatshimanik eka e tapuetamin.

Tan ui ishinakuat e manenimakan auen mishta piuenitakuan.

Manenimakanu auen e matshi tutuakaniti miam mate tshimatshi tatinakun kie apu tapuetamin tshetshi tatinakuini. Apu tapuetamin tshetshi utshemakuini, tshetshi tatinakuini kie ma tshitaikamikun tshetshi nutshikuini (peikuan tshuitamush) eka e *tapuetamani* tshimanenimakan eshi-matshi-tutakuin. Auat peikuan tshimanenimakan eka e pashitshikuin « *mauat* » essishueni.

Manenimakanu auen e matshi tutuakaniti miam e matshi-tashikut :

- tshitaussim, tshussim, tshishim (napess kie ma ishkuess);
- auass eka ka tshissenitak tshetshi tapuetaki, miam mate 16 ka itatipipuneshit (mauat tshekat tapishkut itatipipuneshitau) kie ma eka 18 ka itatipipuneshit anu e tshisheniunati auen ka matshi tatinikut e ishpikushiniti (miam mate katshishkutamatshet, ka tshishe-utshimau atusset kie ma ka metueiat auassa).

E aiaukan auen eka ka 18 ka itatipipuneshit miam mate akunakanu e musheshkatet kie ma matshi-atauatshenanu, kie ma tshitaiauau mishkut ka matshikaut, ishkuteu-apui, kie matshuenisha, etc., peikuan ne manenimakanu e matshi tutuakan.

Tan ui ishi-manenimakan auen miam e matshi mashikuakan mishta piuenimakanu an.

« *Nutamakushiti tshetshi eka nipaati peik(u) nitauassima.* »

(anite e pakuenikan mishta mashinaikanit *Les femmes autochtones et la violence familiale*, Canada, Centre national d'information sur la violence dans la famille, Ottawa, Agence de la santé publique du Canada, nana pipun 2008 mishta tshituashun.).

E metuatshenan auen ushtikuan nanikutini **manenimakanu auen ushtikuan** issishuenanu. Miam ishinakuat auen tshetshi nashik anakaniti kie ma kutshipanitakan tshetshi tutakan tshekuan eka ka minuatamin, kie ma tshetshi shetshishiumatshiuti auen kie ma upime tshitanakun. Shuk shuk ishinakuan e mamitinenitakan, patshishinu auen kie ma apu tapuetatishit auen.

Passe e aiashinakuaki e metuatshenan auen ushtikuan kie neni mishta matshi-aituna :

- tshipa tshi ui nipaitishin kie ushukuitishun, tshin kie ma auen ka nishtuapamit kie ma ka shatshit;
- tshipa tshi ui pikunen tshitapashtauan, nekatshiau tshitaueshisham kie ma tshipa ui nekatshiau;

- tshipa tshi nashak, tshimutapamik kie tshipa tshi tutam tshetshi shetshishin natu tshetshi tutakuini kie ma ka nishtuapaminiti auenua (« nanitam ka paminashatshet issishuenanu »).

« ... *Nashik tshinakuauat, tshishatshitin ekue issishuetau.* »

(anite e pakuenikan mishta mashinaikanit *Les femmes autochtones et la violence familiale*, Canada, Centre national d'information sur la violence dans la famille, Ottawa, Agence de la santé publique du Canada, nana pipun 2008 mishta tshituashun.).

Takuana aiatit e metuatsheanan auen ushtikuan apu put ishi-utinakanikau miam mishta matshi-aituna, akuiueu peikuan. E metuatsheanan auen ushtikuan tshipa tshi ishinakuan tshetshi tshok manenimakan uiat kie ma matshi-mashikuakan eka nakakan tuiesh. Apu ishinakuat auen tshetshi manenimakuini mak nashik anakuini, tepitepuatishk kie apu itapatishin tshetshi itishki kie ma nashik anakuin etanan, miam tshikanishat kie ma tshuitshekanat etatau.

Kauitamushat uauitamatuat tshokuuanu kie aimituat. Tshipa tshi ishinakuuanu tshetshi ui tapuematishutau kie ma uitamatutau tshokuuanu tshipa tutamuat, apu uesha peik(u) tapuet. Miam mate, apu ishinakuat auen tshetshi uaushinaki eshi-tapuetamin tshokuan kie ma kutshipanitat tshetshi eka tutamani tshokuan ka shapenitamin kie ma uapamatau tshuitsheukanat. (Uemut uin e auassiui, tshikanishat ishinakuuanu tshetshi tshitapamakuini kie ishinakuuanu tshetshi akua tutakuini, tshetshi eka uitshetau kuatakak tshe matshi tutakashkau kie ma tshetsh itutaishkau anite e kushtakuat.)

E metuatsheanan auen ushtikuan mitshetuit ishinakuan. E natu-shetshiakan auen kie ma e ui tipenimakan eukuana neni nish shuk shuk eshinakuaki. E ui shakutshamakuin tshetshi tutamin tshokuan eka ka ui tutamin, shuk ishinakuan ne kie. Miam mate, passe uitamushumauat issishueuat nika nipaitishun nakushin. Tshuitamush itashke metuatsheu tshishtikuuanu, apu minuat ne.

« ... *E manenimakan auen e nekatshiakan, mishta tshokuan an, tuiesh tshitakuikun, e manenimakuan auen apu tuiesh itshepan, pikunakanu auen.* »

(anite e pakuenikan mishta mashinaikanit *Les femmes autochtones et la violence familiale*, Canada, Centre national d'information sur la violence dans la famille, Ottawa, Agence de la santé publique du Canada, nana pipun 2008 mishta tshituashun.).

Eka tshipai tshissishkuau e metuatsheanan auen ushtikuan. Minikash kanuenitam auen, apu tuiesh nakatakuat.

Shuniatat e tipaikan eukuan ne shunianu auen ka apashtat tshetshi tipenimat auenua. Tetiss tshiminak shunianu tshetshi eka nakatat kie ma tshetshi tshishpeuatishini. Nanikutini tshetanimatsheniten tshetshi atusseuni kie ma, atusseni, tshishetshishin tshetshi unitain tshetatusseun.

Aiatit shuniatat ka tipaikan tshipa tshi ishinakuan mishta matshi-aitun, miam mate :

- utinam tshikaniunu kie tshitshisheniu-shuniam kie ma tshissinuatshishtau eshi-mashinatutishin;
- tshitshimutamak;
- apu minikuin mitshiminu, anite tshe apin, matshuenisha kie ma natukuna tshipa apashtan, kie ma apashtauat tshitauassimat eka ka 16 pipuneshitau kie ma kuataka tshikanisha tshipa ui apashtatau.

Takuana kuataka shuniatat ka tipaikan eka put mishta matshi-aituna tshipa tshi peikuan ushtuenitamaku auen kie shikatenitakuan :

- tshishitshamakun tshetshi tananut tshitshit, tshishitshimakun tshetshi auiashini tshutapan kie ma tshitshitashunam anite shuniautshuapit ka takuat tshishuniam;
- tshitshinakashun tshetshi uitakaniti kassinu mashinaikana tshetshi tshin nashakuini;
- eka tapuetakuini tshetshi kanuenitamin apishish shuniautshuapit pakassiutau tshitauassimat mak tshin.

Peik(u) tshekuan meshta apatak tshetshi tshissenitakan e manenimakan auen eukuan ume peikutau **ishi-pimuteu**, peikutau tutam auen tshetshi ui tipenamakuini :

- tshi tutak tshetshi uanenitamini, shikatenamuini, shakuenamuini kie ma kushpinenitamini tan tshe ishpan;
- tshitshiteimak tshetshi tshituten eka ua tani;
- eka manikuini tshetshi aimini kie ma eka aimi e itakuini.

« *Nikaui pitama nitituteti. Ekue ishit apu minu-ishkueuin, tshinanituapaten tshetshi mashishkueuatikuini... Kassinu e itashiht nikanishat nitikuti tshetshi eka tshekuan issishueiani usham "tshinanu an tshitinat".* »

(anite e pakuenikan mishta mashinaikanit *Les femmes autochtones et la violence familiale*, Canada, Centre national d'information sur la violence dans la famille, Ottawa, Agence de la santé publique du Canada, nana pipun 2008 mishta tshituashun.).

Apu tshi kashinakan auen e manenimakan e nekatshiakan usham tshitissishueti tshekuan kie ma tshituteti tshekuan « eka e minu-utinakan » kie ma auen « apu tshi nanakatishut » usham minukushu, kie ma kamatshikaunit utinamupan. Auen itikuini tshin an tshituten, mishta unapanu.

Kassinu auen ka tipenimatishut uinuau ishpatishiuat tshetshi tshissenitakau tshekuanu essishuetau kie tshekuanu e tutakau. Ka manenimakan auen ka nekatshiakan tapuetatishu auen ka ishi-atusset — apu nasht minuut — shuk shuk an mishta matshi-atun.

**« Apu unitain tshishtikuan
Tanite nita tshipa tshi tshisseniteti
Tshitshitshakushit tshe nekatshishk
Kie tshe pikunakuin tshuiat**

Irène

Kakanitutineiata tshipimuteuatshen meshkanat

Kaminushkueut Irène

Tshishatshitin Irène

Tshekuan eka tut tshituteti?

Tshiam tshitutenakue. »

Mishtikushiu-ashu-ashtakanipan unikamun

« Angel Street (Lovely Irene) »

tapuetamupan ne Lucie Idlout

« ESHPAN KA MANENIMAKAN AUEN MAK MATSHIKAUSHIUN »

Mitshet auenitshenat pashkapatamuat e manenimakan auen kie matshikaushiun aiat ishpanu eka nasht e uiakaniti auen. Ume enat unashinataikan tshuapatent tan eshipant. Ishkupanu auen umik ekue papinit « metikat » e manenimat auenua — tshipa tshi pitama atishkamueu tshekuanu kie ma manenimeut kie nashik aneu. Eku ne ka manenimakan tshipa tshi kutshipanitau tshetshi uitshiat tshetshi ashteienitamniti kie ma tshipa tshi nanakauishtueu. Peikuan shaputue tshika ishkupannu umik nuash tshuapit tshe utamaitshet. Nanikutini mitatam ne auen ka uesham tshishuepit — itenitam apu nita minuat tshikut tutaman kie ma natuenitam tshetshi uitshiakaniti, kie ma nika nipaitishin issishueu nakatati. Muk(u) eshpan matshikaushiun kau ishkuapanu umik kau ekue papinit umatshikaushiun. Tshek aiat ekue matshikaushit kie aiat ekue manenimat auenua.



Innu-ishkueu peik(u) ka mashishkueuatakan issishueu : « *Ishkueu ka nipaut ka mashishkueuatakan — metikat tshipannu e manenimakan, apu apatenitakan ushkat. Nashik tshitaneu anite etaniti tshuitsheuakana, tshutamik apishish, tshek tshutamashpitinik, tshek tshuishashtishkuepatik, ashtamtit tshimatshimanik. Apu tshekuanu tutuakanitau. Numat shikatenitakuan eshpaniti. Nin etenitaman akushun nipa ishi-utinen uesh aiat matshikaushiu tshek.* »

Miam a « e pikupatikuin » etamatshuin?

Tshui nakainau matshikaushiun, shetshen animan e itenitakan uauitameku kie ma natuenitameku tshetshi uitshikuieku tshika punapanu.

« Peikuu nipassikan nutineti ekue itashkunamukau, nitshipuatiht uin mak nitauassimat ... Ekue ishit : “Nitshisseniten e shatshin, tshek tshika ishinakuan tshetshi nipian usham e shatshin”. »

(anite e pakuenikan mishta mashinaikanit *Les femmes autochtones et la violence familiale*, Canada, Centre national d'information sur la violence dans la famille, Ottawa, Agence de la santé publique du Canada, nana pipun 2008 mishta tshituashun)

Mitshet auenitshenat ka manenimakanitau, tshipa minuenitamuat punapanit e nekatshikanitau, shetshishuat mishkut tshe ishpanit kutshipanitatau tshetshi nakaikau e tutuakanitau — kie tan tshe ishpaniti utauassimuuau, uikanishuuau kie ma nenua tan tshe tutuakaniti nenua ka manenimakuat. Shetshishuat tshetshi eka uitshikutau uikanishuuau kie uitsheuakanuuau, nanikutini eukuan tapue eshpan ushkat. Muk(u) eka unitshissitamik apu muk(u) tshinuau ishinakushiek(u). Tshitauassimuuat kie auenitshenat pessish ka tatau etain, auat auen ka manenimukuiek(u) patshishinuau kie uinuau anite matshikaushiun nuash etat auen tshe natuenitak uauitshitunu. Tshika tshi tshipanau e minutaiek(u) tshitinniunuau kie tshitauassimuuat utinniunuau.

E uitshapu tseutinanut, miam peikuan auenitshenat, teuat menuenitakushitau kie ma eka menuenitakushitau. Ishinakuan nanikutini tshetshi nashakan uauitshiaushun mate.

Apu auen minuanit tshetshi manenimakaniti kie tshetshi nekatshakaniti. Tshika tshi shatshiuau auen, kie uin tshika tshi shatshikuau, muk(u) ishinakuanit tshetshi matshikaushiutakuiek(u) kie shetshishiumatshuiek(u), akua tutatishik. Menuashiti uitsheuakanitatun kie ma uitamushun, apu takuat shetshishun.



TAN TSHE ISHPANITAU NITAUASSIMAT?

« *Ushtikuan auen metuatshenanunit, animanitshenitamuat auassat, apu shakutatau. Auassat uinuau tamenamitishuat eshpanit; apu tshissenitakau tan tshititau kie uanenitamuat. »*

(anite e pakuenikan mishta mashinaikanit *Les femmes autochtones et la violence familiale*, Canada, Centre national d'information sur la violence dans la famille, Ottawa, Agence de la santé publique du Canada, nana pipun 2008 mishta tshituashun.)

Ishinakuan auassat tshetshi ushkat tshissituakanitau. Tshika tshissinuapatamuat tshekuan e tutamin tshetshi punapan ka matshikaushikatakuin tshek ishinakuaniti tshetshi kie uinuau anite pimutetau aishkatshit.

Auassat mishta ishpitenitakushuat tshetshi punapanitakan matshikaushiun. Nekatenitamuat e uapatakau eshi-manenimakuin kie ma e petakau e nekatshikuin. Tshipa tshi mishkutshipanitanau eshi-uapatakau e manenimakuini kie eshi-uapamatau tshuitamusha kie ma tshinapemuaua kie uinuau tshe kashtukutau. Uapamatau nenua ka matshikaushikutakuin kie ma nekatshikuin, tshipa tshi kie uinuau itenitamuat apu ishpitenimatishtut tshekuan nipa ut ishpitenimanan kie ninan.

Tshissenitamuat tshitauassimat e manenimakuin mak e nekatshikuin, at shuk itenitamin apu pashkapatakau.

Tan eshi-kashtukuat auassat?

Auassat ka animatshenitakau eshpanit e matshikaushinanuti uitshuat apu nukutakan, katakanu. Auassat ka tatau anite matshikaushiun e takuat tshipa tshi ishinakuanu tshetshi mishta akushitau kie ma eka minuenitau. Kie uinuau tshipa tshi patshishinuau anite matshikaushiun kie ma tshipa tshi matshikaushikuatueuat kuataka auenua miam uitauassa. Tshipa tshi kie ishinakuanu tshetshi nanakamitatau anite e tatau matshikaushiun e uapatakau eshinakuat tshitinniuu ashit tshuitamusha kie ma tshinapema.

Mitshet auassat apu minuenimutau, apu minuatishtutau, apu pashishtikau katshishkutamatsheutshuapit kie pikupatamuat tshekuanua, nanitu-shetshieuat uitsheuakanuaua, natu-tutatishuat anite uinuau. Passe auassat apu ui tshiuetau uitshuauat, utinamuat kamatshikaunit, miam natimik tshekuan ka nenetakan kie ma minuau ishkujeu-apuinu, tshipa tshi kie nekatishuat kie ma kutshipanitauat tshetshi nipaitishutau (teuat e nipaitishutau). Tshipa tshi animiuat e uitamushutau uesh ma uapatamupant matshikaushiunu anite uitshuauat, kie

uinuau ekue itenitakau e « shatshitinanut » matshikaushikatatishunanu. Tshipa tshi akushuat kie ma akushuat ushtikuanuat atshinu.

Tshimut nekatenitamuat auassat. Passe kutshipanitauat tshetshi eka matenitakushitau, passe mishta akua tutamuat tshetshi tshiam-inniutau.

« Auassat ka tatau anite tekuat matshikaushiun, eukuannu muk(u) e pashkapatakau, eukuannu eshi-inniutau. Eukuan kanipua ishinakunutshe, itenitamuat... Unitauat utauassiunuau. »

(anite e pakuenikan mishta mashinaikanit Les femmes autochtones et la violence familiale, Canada, Centre national d'information sur la violence dans la famille, Ottawa, Agence de la santé publique du Canada, nana pipun 2008 mishta tshituashun.)

E mananimakuin animan tshetshi aitututau tshitaauassimat. Tshimishta aieshkushinatshe ekue itenitamuat apu ishpitenimuian tshetshi aitutukau, tshetshi minu-tutukau.

Shitshimekuat tshitaauassimuauat tshetshi pipamutetau, tshetshi natshi-uapamatau uikanishuaua, kie ma tshishenua kie ma tshuitsheuakana tshe uitshikutau tshe ishpish ueuetinamin tshitinniun.

Ishinakuanit tshitaauassimat tshetshi nekatshiakanitau, tuiesh nanituapata anite tshipa tshi uitshikun. Apu tapuetakan anite takuaikan tshetshi nekatshiakanitau auassat. Ishinakuaki tshetshi nekatshikuini, tatau tshitaauassimat tshitshit, takuaikan tshitaikamik kie kuatak auen ka uapik tshetshi aimieku kamakunueshiht kie ma anitshenat ka tshishpeuatatau auassa.

Ishinakuan tshetshi tshishpeuatakanitau auassat tshetshi eka nekatshiakanitau mak tshetshi eka utamuakanitau!



TSHEKUAN MA NE UET ISHINAKUSHIAN NIN?

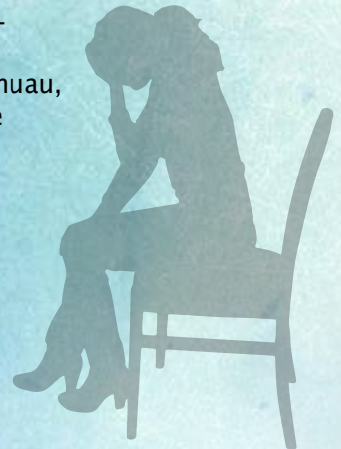
Tshitshue matshikaun ka manenimakan auen, kie auassat kie mashue e itashinanut, auat anite ka utishkuemiht kie anite innu-assit ka takuaki anite Innit ushkat ute ka tatau kie Mashinnit. At shuk ishinakuaki tshetshi takuaki matshikaushiun kie nekatshitun mush eukuan eshinakuat mitshetuit anite ka tatau auenitshenat kie anite ka ishi-inniunan, eka tshitunan e manenimakan auen kie e nekatshikan auen apu tut ishinakuat ueshkat kie anite eshi-iniunan innit kie anite mashinnit.

Ueshkat, innu-inniun minu-apatshiepan e uauitshikutau kassinu auenua miam napeua, ishkueua, tshishenua kie auassa. Kassinu auen takuanipan utapun, kie tshitshimauenitakanipan kie ishpitenitakanipan. Ishkueuat mishta ishpikushipan anite matshima uinuau. Ishpitenimakanipant usham uinuau uapamepant auassa kie uinuau aitutuepant kie aitutamupan anite matshima uinuau.

« ... Ka ishi-pimutenan ushkat ka takushiniht mateuat [...] tutamuat nana tshetshi unitaniti ka ishi-inniun anite ka utishkueminiti. [...] Ka ishi-matshipaniatau ka utinatau utauassiminua kie ka ishi-matshikaushikatuatau mitshetuat innuat ka manenimakanitau anite ka itashuakanitau auassat ka kanuenimakanitau kie uinuau eukuan ekue ishi-inniutau [...] [Mishtikushiu-ashu-ashtakanu] "tutamuat nana tshetshi anutshish ishi-inniuniti, shaputue matshipanieuat utauassimuaua kie ussimuaua anite innit". »

(La victimisation autochtone au Canada : sommaire de la littérature, Ministère de la Justice du Canada, Recueil de recherche sur les victimes d'actes criminels, 3 ka itashtet, shiship-pishimua nana pipun 2010 mishta tshituashun)

- Ukashinatun mak eshi-nakatakan anite ka tanan auassat ka kanuenimakanitau eukuat anite uetshipan e manenimakan auen kie matshikaushiun — nipashkapatenan — shaputue eukuan eshinakuat anite ka utishkuemiht innit kie mashinnit kashikat.
- Tutakanipan atusseun e nanitu-tshissenitakan ka ishi-mishkutshipan anite tshiashi-innit. Ka itshenakaniti ka ishi-tshishkutamuakanitau, utinniunuau kie utaimunuau, numat tapue apu minuakue, nukuan anite kashikat kie ainishkat tshika nukuan, matshipanikuat nana anite ka ishi-inniutau e uauitshitutau uinuau anite innit kie mashinnit, kie ishi-tapuetatishutau anite utinniunuat, kashikat patshitenimuat kie apu shakutatau tshetshi uitshitishutau, kau tshetshi natakau ka ishi-pimutetau nekana.
- Eshinakuat, mitshet anite innit ka tanan, e matshikaushikatuakan apu muk(u) peik(u) ka utishkuemit kie ma muk(u) peik(u) auen, tshika ishinakuanu kassinu e itashinan tshetshi



natshiakanitau. Tshika ishinakuan tshetshi nishtakan uesh ma tshika uitshikunan mishkutshipanitakan anite e minuat kie anite tshitinniunat.

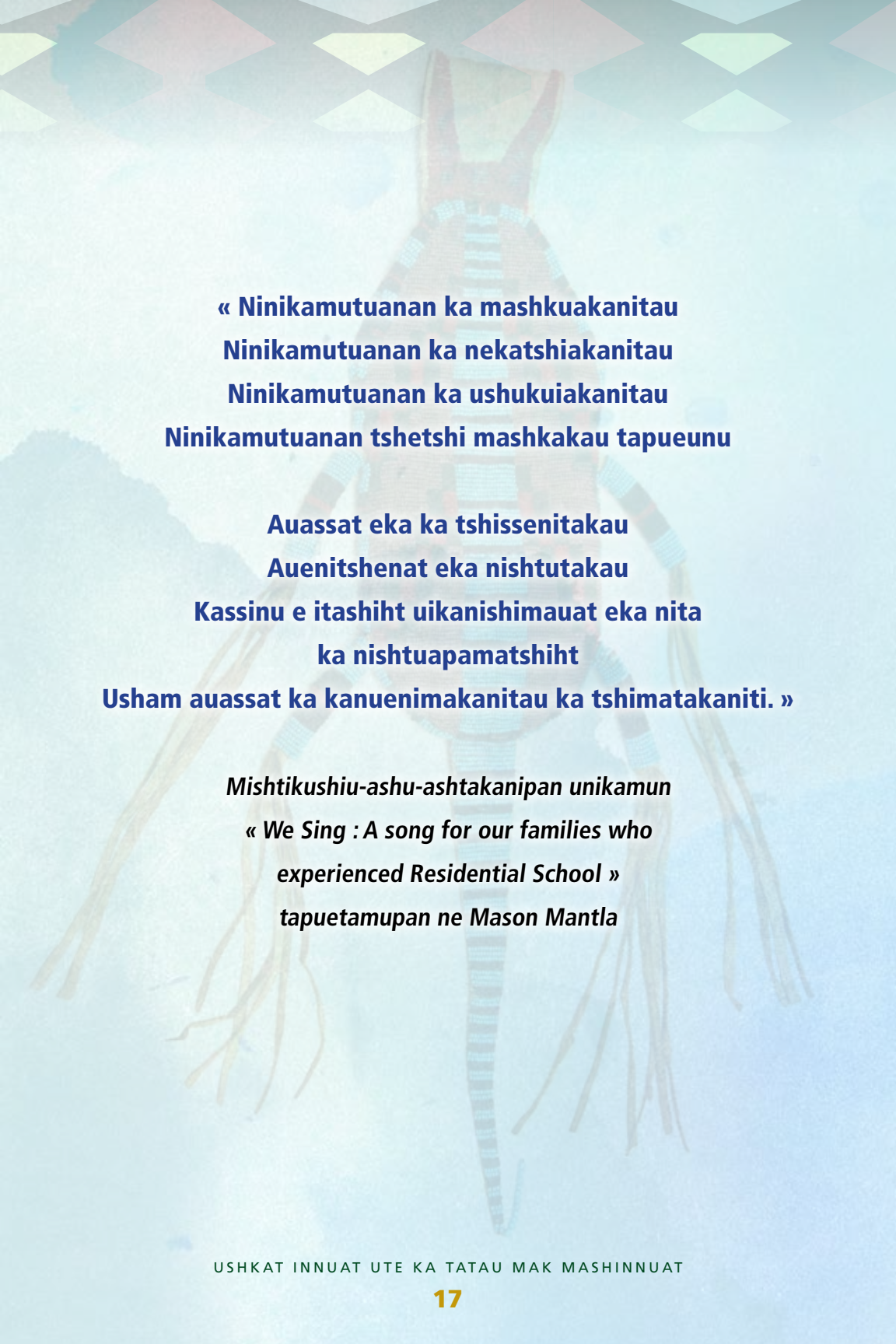
- Eshi–matshipanikutau auassat ka nekatshiakanitau kie ma ka manenimakanitau kie ma ka ishi–uapatakau anite uitshuat shaputue ekue ishi–inniutau kie uinuau kie anite aianishkat eukuan tshe ishinakuat. Nukuana passe tshekuana, e animuiuitau ishkuessat tshetshi itenitakau nika mashishkueuatikun uesh ma eukuan nanitam ka ishi–uapatakau ka auassuitau, eku napessat uinuau itenitamuat ishinakuan tshetshi mashishkueuian uesh ma napeu nin, miam eka menupanitau kie ma e shetshshitau kie ma e ushtuenitakau.

Namieu ne ua issishuenan kassinu auassat nitaushuat anite e maninenimakaniti ukauia anite uitshuat tshe kie uinuau mashishkueuet kie ma uinuau tshika nekatshiakanuat. Auassat tshipa tshi ishinakuanu tshetshi *eka apatenitakau* eshpanit mishkut ekue eka ishpish mamitinenitakua tshe ishpish inniutau; nuash tshishi–ishkueuitau kie ma tshishi–napeuitau, tshipa tshi ishinakuanu tshetshi eka itenitakushitau miam auen ka matshikaushit kie ma manenimat auenua, kie ma tshetshi patshitinitishutau. Uikanishimauat kie auenitshenat ka tshisheniuitau ishinakuanu tshetshi uitshiatau utauassimuaua tshetshi eka apatenitaminiti kie kassinu auassat peikuan anite ka tanan innu–assit. Uitshiakanitau auassat tshetshi shutshishitau anite etenitakushitau, tan ui ishinakuat tshitinniunu.

Apu nita ishinakuan shetshen tshetshi punapaniti matshikaushiun. Ka utishkuemit tshika ishanakuanu tshetshi ituteti anite counseling ka ishinikatet tshetshi nakaiki e nekatshiakan kie e manenimakan tshetshi kau tshiam–inniuti.

Eshi–tshitshipan matshikaushiun nanikutini eukuan ut shuniatat, tshishuapun, kakuenitamun, eka etshi matshimanitushunan kie ma eshi–matshipan eshakam tshishikua. Innu–assit kie anite ka tatau mashinnuat apu minuakau mitshuapa, mitshetinanu anite pitukamit eukuanu uet nanikutini utsheshtiapinan. Passe auenitshenat, ne shumashinu, e unitishunan mak e mishkutshipanan kie ma eka minuatet ushtikuan e minanutu ishkuue–apui kie ma kamatshikaun e utinakaniti eukuan uet matshipan pitikumit ekue papan matshikaushiun mak e manenimakan auen.

Tan ua ishi–tshitshipan matshikaushiun anite ka utishkuemitau kie ma anite ka uitamushitau shaputuepanu usham — anite eshi–itamatshun, eshi–pakushenitak, eshi–apashtat, e akuikuat, e uanenitak — « anu nin nitishpitenitakushin » mak kuatakak neni ka shatshiat. « Tapuetatishu tshiam » tshetshi akuiati auenua, shuk shuk ishinakuanu tshetshi eka tshi tshishpeuatishuniti kie ma apu tshikut tshishpeuatishunit, miam utishk, auema, unapema, uitamusha, auassa kie ma tshishenua. Put auen ka nekatshiat auenua kie ka manenimat atat put nishtutam tshekuan ma uet tutak nenu, apu nikut eka nishtutaki apu ishinakanit tshetshi tutaki, mishta piuenitakanu auen ka ishi–innut.



**« Ninikamutuanan ka mashkuakanitau
Ninikamutuanan ka nekatshiakanitau
Ninikamutuanan ka ushukuiakanitau
Ninikamutuanan tshetshi mashkakau tapueunu**

**Auassat eka ka tshissenitakau
Auenitshenat eka nishtutakau
Kassinu e itashiht uikanishimauat eka nita
ka nishtuapamatshiht
Usham auassat ka kanuenimakanitau ka tshimatakaniti. »**

Mishtikushiu-ashu-ashtakanipan unikamun

***« We Sing : A song for our families who
experienced Residential School »
tapuetamupan ne Mason Mantla***

Tutakanipan atusseun tshetshi tshissenitakan mitshet auenitshenat ka itutetau auassat ka kanuenimakanit tshissenitamuat tan tshe ishi-tshishpeuatishutau, miam mate eka e tshitut, e katatau ka tutuakanitau mak eka e pashkapimakushutau. Neni ka tutakau eukuata uetshipaniti mishta tshekuana ka matshipanikutau anite uinuau mak anite utauassimuuat — apu shuk ui uauitakau eshpanit anite pitukumit uitshuauat miam anite ka utishkuemitau kie ma anite ka tanan innu-assit kie apu natuenitakau tshetshi uitshiakanitau. Eshpish unitakan ueshkat ishi-inniunan, apu uemut tshissenitakau tshetshi nashamakueni nana tshishennuat ka ishi-tshishkutamatsheniti anite mamu e tananuti.

« *Kassinu auen tshissenitam(u) muk(u) apu tshekuan tutakan.* »

(anite e pakuenikan mishta mashinaikanit *Les femmes autochtones et la violence familiale*, Canada, Centre national d'information sur la violence dans la famille, Ottawa, Agence de la santé publique du Canada, nana pipun 2008 mishta tshituashun.)

Ka auassuitau anite ka tatau matshikaushiun ka takuat nanikutini itakanu : « Eka tshika uauiten. » Apu auen tshika tshi uitshimt anite uashka auenua ka taniti, kie tshipa tshi itenitamuat apu tshikut kutshipanitaian tshetshi nanituapataman uauitshitun tshetshi mishkutshipaniti eshpant. Eka e uauitakaniti matshikaushiun anu ekue mishat nekatentamun.

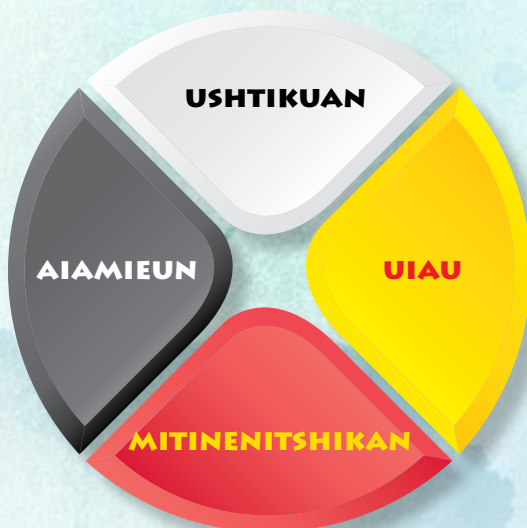
Apu uitshit auen ka ushukuikuin eka uauitamani.

Eshpan matshikaushiun anite ka utishkuemitau tshipa ishinakuan tshetshi nakaikau napeuat kie ishkuueat eshkueka kashtukuatau mitshet auassat.

Tshetshi shutshiskuakanitau ka utishkuemitau, tshetshi kau natakau utinniunau ishinakuanu tshetshi natushitishutau.

AIAMIEUN TSHISHKUTAMATUNA

Mitshetuat Innuat ute ushkat ka tatau mak Mashinnuat anite nituapatamuat minueniunu kie minuenimunu anite aiamieunit, miam ne e uauitakan ka *uaueiat natushiun* nipa ishinikaten. Neuit e pakuenikan tatshitina tshetshi minueniunan, minuenimunan mak kushkushinan. Papeikua eshi-peshaikaniti uitam nutina (tshiuetin, mamit, pashtautin, akua nutin) eukuete anite e nukuak e nitautshit innu.



Nin aum tshikanish; nutaui Pishim(u) ishinikashu, anite uetshipan nitanniun; nikau Assi ishinikashu, nuitshik nitinniun; NukumTipishkau-pishim(u) nuashtenimak anite e kashtipishkat; Nimushum Tshetshipaushu-utshekatik(u) ishinikashu, uin nitshissinuutshishtak

Ka uauieiat natushiun eukuata tshipa matenitakanu eshi-inniunan kie neni mitinenitamun e matshikaushikatuakanitau ka utishkuemitau. Tshipa tshi kie uitshiuueu tshetshi mashkakaniti tshekuan tshipa tutakanu tshetshi nakaikan eshpan.

E pakuenikan anite Ushtikuan : Uitam tshitshipatshimunuau anite ka ishi-nniuiek(u) mak tshekuan uet takuak matshikaushiun kie ma shaputue tshetshi tshishkutamatishunan, tshitshue minuau tshika uitshikunau anite ushtikuan auen kie anite minueniunit.

E pakuenikan Aiamieun : Shaputue tshetshi tshiashi-aiamiananuti, miam e nikataishunan, matitushunan kie e innu-nimanan, uitshiku auen tshetshi natushiati utshitshakusha kie umatinetshikan.

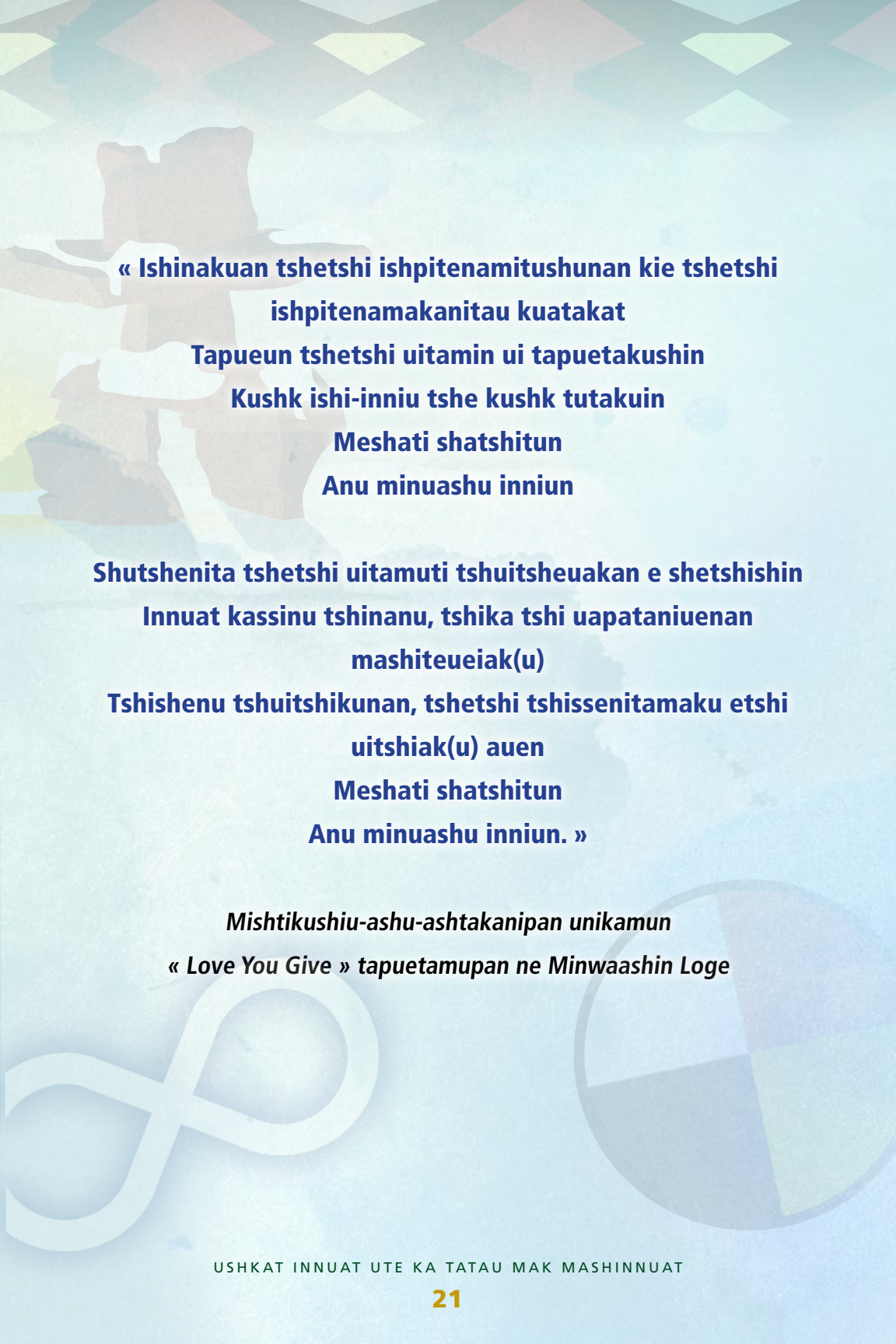
E pakuenikan Uiau : Akua e tutakan uiau, e natushitishunan, e nimiran, e uitshauinan kie kuataka tshekuana tshe uitshiuet tshetshi minueniunan tshetshi eka akushinan. Ishkuteu–apui kie kamatshikaun mishta pikupatam auen uiau uetinaki.

E pakuenikan Mitinenitshikan : Tananu uashka auenitshenat ka minuatakanitau (miam mate, auenitshenat ka minuatamin etani anite etatau, tshushinen) mishta minuau, e aimiakanitau tshishenuat tshetshi tshissenitamin etin anite e itamatshuin tshishtikuan kie tshetshi eka katshinassimatishuni eshi–uapatamin ka tutamin.

Tshek ma ishnakuat tshetshi tani anite e matshikaushinan, tshin kie tshitauassimat apu tshika tshi minueniuiek(u), minuenimuiek(u) kie kushk ishi–inniuiek(u) eukuan ushkat tshipa ishinakuan tshetshi ishinniuiek(u) e tshitapatak n ka uauieiat natushiun.

Min kuatak eshi–tshishkutamatshenan anite aiemieunit, miam mate nishuasht umushumauat, ishpitenitamun, tapueun mak eka ka katshissinan eukuan ushkat e ashtakan ui minupanuti anite e uitapamakan auen.





**« Ishinakuan tshetshi ishpitenamitushunan kie tshetshi
ishpitenamakanitau kuatakak
Tapueun tshetshi uitamin ui tapuetakushin
Kushk ishi-inniu tshe kushk tutakuin
Meshati shatshitun
Anu minuashu inniun**

**Shutshenita tshetshi uitamuti tshuitsheuakan e shetshishin
Innuat kassinu tshinanu, tshika tshi uapataniuenan
mashiteueiak(u)
Tshishenu tshuitshikunan, tshetshi tshissenitamaku etshi
uitshiak(u) auen
Meshati shatshitun
Anu minuashu inniun. »**

***Mishtikushiu-ashu-ashtakanipan unikamun
« Love You Give » tapuetamupan ne Minwaashin Loge***

ANU A MINUAU TSHETSHI TAIANI KIE MA TSHITUTEIANI?

Pitama minu–anit tshtauassimat kie tshi minu–anitishu tshetshi eka natu tieku.

Tshipa tshi uenipassish tshituten, kie ma atshinu tshipa tshi tshituten eka e uepan tshinapem kie tshuitamush. Muk(u) tshika ishinakuan tshetshi mishkutininini tshekuan eka ka minuatamin.

Tshipa tshi ishinakuan tshetshi tamenimakuin tshikanishiht kie ma tshuitsheuakan e pikunamin tshinipaun. Uitamuat animan e nakatit tshinapem kie ma tshuitamush, eka tshekuan tutamin apu tshipa tshi uitshiau auen ka manenimakuin kie ma matshikaushikashtashkuin. Ishinakuan tshetshi ushamuitishuni eshkueka tshi uitshit kuatak auen.

Mnita u tshita uassimat tshetshi itenitakau matshikaushiun mak manenitamun eukuan eshinakuat nipaun eukuan tshe ishi–uapatakau anite nikan kie uinua u. Tshituteni, tshita uassimat uapatamuat tshetshi nanakauin kie tuten tshekuan tshetshi natshipaniti matshikaushiun kie manenitamun tshitinniunt.

Eka unitshissita miam eka minuenimuini kie ma shetshishiumatshuini, tshipatshishin anite ka nenekatshiakan auen. Miam shash utshi mashishkueatikuan peikau, kau tshika ishinakuan. E matshikaushikatuakan auen kie ma manenimakan ai at ishinakuan, patush ushtishkapishtamin mak natuetamini tshetshi uitshiakanitau tshita uassimat mak tshin.

Ishinakuat tshetshi utininim tshitinniun, umeni kukuetshimatishu :

- Auen ka manenimit ai at a nimatshikaushikatak?
- Auen :
 - shash a nitshi itashkunamak passikanu, mukamanu, mishtikunu kie ma passikanu, tshetshi ui akuiti?
 - shash a tshi utamueu nitauassima kie mamatshimashikueu?
 - shash a nitshi ui nipaik kie ma nitauassima?
 - shash a tshi ui nipaitishu?
 - nui matshimashikakuti a?
 - kamatshikaunit utinamupan kie ma mishta minipan a?
- Nutinen a kamatshikaut kie a ninim a tshetshi eka ushtuenitaman?
- Nishetshishen a tshetshi natu titau nitauassimat?
- Nuitsheuakanat mak nikanishat shetshishuat a natu tshetshi tiani?
- Tshekuan eshpish anite utsheshtiapiun usham matshikaushiun takuan anite etaian ashit nitauassimat?

- Tan eshpitenitakuanit auen ka manenimat umatshikaushiun kie ma e kakuenitak?
- Auen aieshkupu a tshetshi natuenitak counseling ka inan kie ma tshetshi uitshiakaniti?

TSHEK EKA UI TSHITUTEIANI?

Tshipa tshi ishinakuan tshetshi itikuinim ishinakuanu tshetshi tain usham tshitauassimat — anu ma ishkuueini — apu nikut tan ui ishi-kushtakuat kie ma tan ua ishpan. Kie tshipa tshi itikun eukuan nanitam ka tutakau tshikanishat kie tshimushum mak tshukum. Ishkuueat, nanikutini napeuat kie, itakanuat uikanishuaua kie uitamushuaua uikanishibua tshetshi eka tshitutetau. Tshipa tshi itakanuat apu pashishtuat Tshishe manitu ka tutak tshituteni, kie ma apu nashamin ueshkat ka ishinniunan.

Mitshet innu-assia anite ka tanan, mush ishinakuan tshetshi shikatenimanitau kie ma nashik anakanitau anitshenat ka nakatakau matshikaushiunu kie ma nakatatau unapemuaua kie utishkuemuaua kie uitamushuaua. Mitshetuit utenauau apu tshissenitakan apu ishinakuat an tshetshi ishpan, apu ishinakuat nita auen tshetshi matshikaushikatuat auenua kie mishta piuenimat. Animan tshetshi tshitutenan, tshiteiakanitau auassat anite eka shuk ka mitshetinan, tshipa tshi ishinakuan tshetshi uanenitakan anite tshipa ishi-ushamunanu.

Animan tshetshi nakatat auen unapema kie ma utishkuema kie ma uitamusha uesh *eshk(u) shatshieu*. Apu peikussit auen ka tit, namieu eka menuat auen e shatshiakan. Mitshet auenitshenat apu ui nikatat unapemuaua, utishkuemuaua kie ma uitamushuaua. *Pishkushenitamuat tshetshi punapanit matshikaushiunu*. Tshipa minuatumuat ait itenitakushiniti unapemuaua, utishkuemuaua kie ma uitamushuaua, anu shuenitakushinit kie anu shatshikutau. Tshin mak tshinapem, tshitishkuem kie ma tshuitamush tshika ishinakuan tshetshi uitshikuiek(u) ui mamu taiek(u) mak tshetshi eka kushpinenitakuat mamu etaiek(u).

Tshika ishinakuan tshetshi natushikuini ushukuikuni. Apu aikamikuin tshetshi uitamini tanite uet tshi ushukushini, natunishishkuue uin apu tshikut animiut kie ma natukunsh tshetshi natushishk uitamin tshekuan uet ishinakushin, uet ishinakuat tshetshi natushikuini. Tshika tshi uitamakuauat tanite tshipa ituten tshetshi uitshikuini mak shushteieshkakuini.

Tshipa minuut tshishat ueuetinamin tshek ishinakuaki tshetshi uenishk tshituteni.

Tshipa tshi ishinakuan tshitauassimat mak tshin kushpinenitakuat anite taniiek(u)!

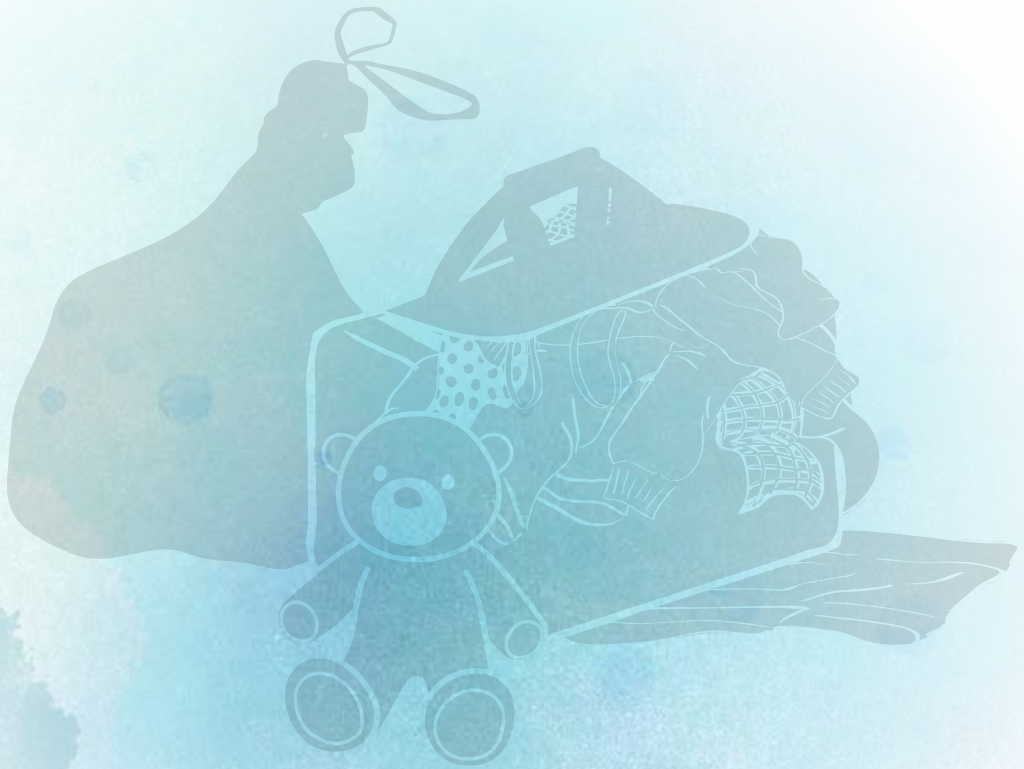
TSHEK ITENITAMAN TSHETSHI TSHITUTEIANI?

shinakuaki tshetshi ui tain kie ma ui tshituteni, tshika ishinakuan tshetshi ueuetinamani tshishat uenishk ui tshituteni.

Tshekuan ma? Usham, tshissenitaki ua tshituten, tshipa tshi ishinakuanu anu tshetshi matshikaushikutakuini. Tutakanipan atusseun ka nanitu-tshissenitakan, e tshitutenanuti mishta kushtikuan, anu ma ishkueu e tshituteti. Mush eshpan anite matshikaushiun, aiat mishau matshikaushiun, tshipa tshi tshek ishinakuan tshetshi uenishk tshiteini.

Minu-mamitinenita tan tshipa tshi ishi-tshituten.

Anu tshika minupanu tshituteneni tshin mak tshitauassimat tshishat ueuetinamini kie minu aieshkupini. Tshika tshi ishinakuan tshetshi kanuenitamini kaueueshtakaniu-mashinaikan eshk(u) eka tsitutein.



KA UTSHEPINAN TUTAKANU

Ka utshepinan e tutakaniti, eukuata anite tshessinatakan tshishat tshe aitanan manenimakuin kie ma matshikaushikatakuini. Ne ua issishuenan tshika aieshkupan eshkueka manenimakuin kie matshikaushikatakuin.

Tshipa tshi ishinakuan tshetshi tsheshtu tshitutenin eshkueka matshikaushikatakuin kie ma manenimakuin matenitamini tshe matshikaushikatakuin kie ma tshe manenimakuin. Auenitshenat ka ushumuitishutau katshi mishta manenimakanitau issishueuat mishta apatin tshetshi tukuaki tshekuan tshe tutakan uenishk tshetshi ushamunanuti uesh ma mishta mashau ushtetipiapiun e matenitakaniti tshe mashikakuin. Ishkueuat mak auassat mishta kashtukuat tuiesh katshi nanatatutinanuti.

Tshe ishi-kukuetshimatishuin pitama :

- Tanite tshe ituteian? Tshekuan tshe tutaman tshetshi ituteiani? Minekash a kie ma uenapissish nika tan?
- Tshekuan tshe takunaman?
- Auen tshe aimik tshetshi uitshikuiati nin mak nitauassimat?

Tshekuan tshe takunamin uenishk tshiteiani :

- Tshikanumat e uinakuin, miam atusseu-kanu (NAS), tshinniu-mashinaikan mak tshitauassimat utinniu-mashinaikana, tshitinnu-kanum kie mashinaikan e uitakan e matshinnuin, tshitakushiu-kanum, tshutapan-mashinaikan;
- Shuniau, tshishuniautshuap-kanum, shuniau-kanu, tshitshekama, tshimashinaikana eshpishat tshishuniam;
- Tshinatukunima tshin mak tshitauassimat;
- Ka pamutakan ka aiminanut;
- E itashteti tshitashuna ukaiminanumuau tshuitsheuanat kie ma tshikanishat kie ma anite tshipa uauitshikun.

Ka minuat tshetshi tutakaniti : Mata aiapishish shuniau, kata nuash e ishinakuat tshetshi minu-apashtani.

Ka minuat tshetshi tutakaniti : Akutshepanita ka ishpenitakuaki mashinaikana miam anite ka utshipaniti ka ueueshtakan, mashinaikan eka etshi peshuapamakuin kie shuniautshuapa mashinaikana, anite itutita tshuitsheuanit kie tshikanishit ka minu-nishtuapamatau.

Ka minuat tshetshi tutakaniti : Eka unitshissita e itashtet ka aiminanut anite kamakunueshit kie anite ka kanuenimakanitau ishkueuat ka ushamuatau. Eka tuiesh utinakaniti ka aiminanut eka patshitenimui, shaputue kutshipanita tshetshi aimini!

**Ka utshepinanu ishinakuaki, unuitashamui eshpish tshi utshepin!
Eka apatenita tshetshi takuanamini tshekuan ute ka uitakan —
unuitashamui!**



AUEN TSHE NATUAPAMIK TSHETSHI UITSHIKI?

« Apu tut tshissenitaman anite ituteiani ishkujeuat ka kanuenimakanitau e ushamutau tshetshi uitshikuian. »

(anite e pakuenikan mishta mashinaikanit *Les femmes autochtones et la violence familiale*, Canada, Centre national d'information sur la violence dans la famille, Ottawa, Agence de la santé publique du Canada, nana pipun 2008 mishta tshituashun.)

Tshin kie ma kuatak nishtuapamat auenua e kushtakunit anite etaniti, **aimiek kamakunuesht.** Kamakunueshiht tshika takushinuat tshetshi nakaikau matshikaushiunu, aitutueu auenua ka matshikaushikatakuin kie tshika uitamakuat eshinakuaki tshitipenitamuna.

Tshika tshi uitshikunau at shuk ui tshituteieku.

Ishkueuini, tshika aimin anite **ishkujeuat ka kanuenimakanitau** takuat anite pessish e apin (mitshetuit ka tanan, auenitshenat ka uauitshiuetau anite ka atussetau ishkujeuat ka kanuenimakanitau tshipa tshi itashaueuat anuenua tshe natuapamakuin). Eka tatu auen tshe natuapamakuin tshipa tshi uitamauat kamakunueshiht, natukun-ishkuess kie ma ka uauitshiaushit anite ka matshikaushikatuakanitau auenitshenat tshetshi uitshikuin tshetshi ituteni **ishkujeuat ka kanuenimakanitau uenapissish** kie **ma mitshuap ka tanan uenapissish** anite pessish ka takuat anite etain tshe ishpish ueuetinamin tshitinninun.

Neni mitshuapa ishkujeuat ka kanuenimakanitau uenapissish (ishkujeuat ka kanuenimakanitau kie ma mitshuap ka kanuenimat ishkujeua) tshika tshi tain anite ashit tshitauassimat uenapissish kie ma tata-minashtakana. Mitshena neni mitshuapa ka ishi-uauitshiuetau tenna ukupaniemuaua e atussenit ashkan tshishikua kie ashkan tipishkua, tshekat kassinu etatiki kanuenitamuat tshetshi tshishpeuatakan auen miam ishinakuat tshetshi natuapamakuin auen ka matshikaushikatakuin.

Tshika tshi aimin anite neni mitshuapa ka kanuenimakanitau ishkujeuat kie ma aimin tshetshi tipatshumuini tshekuan eshpanin. Apu nikut eka uitamani tshitishinikashun. Passe neni mitshuapa kanuenitamuat ka aiminanuti ka tshishikashinan. Mitshet ishkujeuat anite ka atussetau neni mitshuapa shash kie uinuau natshishkamuat matshikaushiunu, nishtutamuat eshinakuanit anite e pimutein.

Kupanieshat ka atussetau neni mitshuapa tshika minikuat tshin mak tshitauassimat anite tshe tain eka e shetshishin kie tshika uitshikuat anite mitshimit, matshuenishat, ashpishana, metuakana, tshika uauitamakuat tshekuan tshipa tuten mak tshika shushteieshakuat. Tshika uitamakuat anite tshipa ituten tshetshi uitshikuini miam ui natukushiuini, shuniatat uitshikuini, uauitamakuini anite eshpan ka ueueshtakan mak anite tshetshi apin, tapuetatishuni. Apu auenua tshikut uitamuat auenua ka matshikaushikatakuin tanite etain, kie ma kuataka auenua, patush tapuetamini.

Tshika tshi mishken e itashteti ka aiminanuti ui tshissenitamin tanite tekuaki mitshuapa ishkueuat ka kanuenimakanitau anite aimini ka aiminanuti ka natutakan auen ka ui uauitshikushit.

Tshipa tshi ishinakuan tshetshi minu–apashtain counseling ka inan tshin kie tshitauassimat tshe ishpish ueuetinamin tshitinniun. Mishta ishpitenitakuan tshiminueniun kie tshiminuenimun.

- **Neni ka uauitshiakanitau auenitshenat** tshipa uitshikuat tshe ishi-aiatinamin tshishuniam, tshetshi mashkamin anite tshe apin, tshetshi mashkamin anite tshe uitshikuin tshin eshi-inniuin (anite ka uauitshiaushinanut) kie tshetshi mashkamin uiesh eka e kashtakuat tshetshi tshinapem kie ma tshuitamush uapamati utauassima (ishinakuat tshetshi tapuetamini kie ma ka ueueshtakan issishueti).
- **Mitshuapa ka uauitshiakanitau ishkueuat** kie uinuau tshipa tshi uauitshikuat, anu anite innit ka uauitshiatau Innuu.
- Tshekat anite kassinu ka tatan innu–assia teuat **natakunishiu–ishkuessat** kie ma **kupanieshat minueniunu ka atusseshtakau** uinuau tshipa tshi uitshikuat, tshin kie tshitauassima. Mitshenu tshekuanu tshipa tshi ishi–uauitshikuan, miam auenua ka matshikaushikatuakaniti, ka matshimashikuaniti kie ma anite ka utishkuemiht natu–katitau kie ma ka patshishinitau. Tshipa tshi kie tau natukunishiu–ishkuess ka ushtikuan–natushiuet kie ma kupaniesh ka ushtikuan–natushiuet anite ka takuaki mitshuapa e uauitshitinan aiatic ka tanan innu–assit.
- Passe anite ka tanan innu–assia, **teuat ka uauitshiatau auenua ka mashikuakaniti** tshika uitshikuat, kie tshitauassima, tshetshi mashkamin anite tshe apin kie ma tutakan tshimashinaikan tshetshi tshishpeuatikuini e utshepinan, mashinaikan tshetshi eka peshuapamakuin kie ma tshetshi tshiam–inniut auen ka matshikaushikatakuin. Tshipa tshi uitshikuat tsheshi natushikuini kie uitshikuini anite ka aimit. Tshika tshi minu–uauitamakuat eshinakuaki tshitipenitamuna mak tshika tshi uitshikuat tshetshi mashkamani anite tshe uitshikuin, tshika uitsheukuat ituteni kamakunueshiutshuapit kie ma akushiutshuapit. **Auenitshenat ka uauitshiuetau anite ka aimit ua natshishkaniti anite innit** tshika uitamakuauat tanite tshe itutein tshetshi mashkamin uauitshitun ua apashtain.
- **Takuana kie ka aiminanuti e natutakuin** eka e tshishikashinan mashue eshpitashkamikat ute Canada. Apu nikut eka uitamini tshitishinikashun. Auenitshenat tshe aimikuin tshika uitamakuauat tanite tshe itutein tshetshi uauitshikuini. Tshika natutakuauat ui tipatshimuni tan eshpanin mak tan e itamatshuin. Mitshet anite ka atusseshiht shash pimuteuat kie uinuau anite mashikaushiunit.
- **Ka aimit** kie **ka aimit–atusseutshuap** tshipa tshi uauitamakun tan tshe ishi–pimutet, nanikutini apu tshishikashinan. Aimi anite atusseutshuapit, takuan kie anite e tshi aiminan ui nanitu–tshissenitakan tan tshe ishi–pimutenan itutenanuti ka ueueshtakan, teuat e uauitshiatau Innuat kie ma teuat ka uauitshiatau auenua ka matshikaushikatuakaniti, tshika uitamakuat tshekuan

tshe tutamin ui natuenitamin tshetshi uitshiuini anite ueueshtakan-aitun kie tshika uitamakuat tshishikashinan kie ma eka tshishkashinan.

MISHTA APATIN : Tshitshuat ut aimini anite ka uauitshiakanitau auenitshenat nukuaki ma anite tshikaiminanimit tanite ka aimin kie kau tshi tatatshipatakaniti, tuta kuataka tshitashuna miam ait ut aimin. Ka pamutakan kaiminan ut aimini, eka uin unitshissa tshetshi itshenamani tshitashuna ka tatatshipatamin tshetshi eka tshissenitakuaki tanite ka aimin. Uesh ma ne auen ka matshikaushikutakuin kie ka manenimakuin apu tshikut tshissenitak tanite ka aimin kie tshekuan ua tutamin. Mitshetuat ka matshikaushitau kie kanitau manimat auenua nanitu-tshissenitamuat kie nanitu-mashkamuat tanite ka aimin tshetshi uieshamakuini.

TSHEKUAN TSHE ISHPAN AIMIKAU KAMAKUNUESHIHT?

Kamakunuesht nanitam tshipa ishinakuanu tshetshi auanisse aimini eka etat auen ka matshikaushitakuin kie ma ka manenimikuin. Ishkueuin, tshika tshi natueniten tshetshi kamakunueshishkueu aimiti, apu nanitam minupan mishkut, kie ma tshipa tshi ishinakuanu tshetshi ui apatshit ka ititimatshet.

- Pitama kie eshkueka tutak tshekuanu kamakunuesht ishinakuanu tshetshi minu-nakatuenimakuini kie neni tshitauassima auasse tshetshi tshitutein eka e shetshin. Miam ishinakuaki tshetshi ut mashikakuini kie ma natu ut tshi tutakaniti eka e minuat tshekuan, tshika tshi makuneu nenua ka matshikaushikatakuin kie ma manenimikuin.
- Kamakunuesht tshika tshi ueueshtau tshetshi natushikuini. Tshipa tshi natuenitam akushiu-utapanu kie ma tshipa tshi ishitashimik nuash akushiutshuapit, kie ma ante etatau natukunishiu-ishkuessat kie ma auen ka atusset anite minueniunit.
- Kamakunuesht tshipa tshi shushteieshk(u) kie tshipa tshi uitshik tshetshi shetshishini. Tshika tshi uitshik tshetshi mashkutau auenitshenat tshipa uitshikuat ne etin miam mate ui apashtani tshekuan tshetshi tshi ituteni anite tshe uauitshikuin tapuetamini.

Auen ka matshikaushikatakuin tshipa tshi ishinakuanu tshetshi makunakaniti, tshipa tshi ishinakuanu tshetshi tshipuakaniti nuash e pimipan ka ueueshtakanit tshetshi uauitamuakan tan tshe ishpish tshishikashit tshetshi unuitshinakanit. Mishta utenat e tanuti, apu ashuapatakan minekash. Tshipa tshi ishinakuanu uipat tshetshi unuitashinakaniti, patush ka pashishtak itenimati anu minuanu tshetshi eka unuitashinakan.

Shetshishiumatshiuini uitamu kamakunuesht eshkueka unuitashinakan. Tshipa tshi ishinakuanu ka ueueshtakan tshetshi natuenitaki tshekuanu tshe akua tutak eshkueka unuitashinakan. Tshipa tshi natuenitamueu tshetshi eka peshuapamakuini kie aimikuini. Eka tutak ka ishi-natuenitamakuan, tshipa tshi kau makunanu.

Kustameku tshetshi natu tutakuin unuitashinakan, tshipa tshi ishinakuan tshetshi nanituapatamin anite tshe tain eka e shetshishin, miam mitshuap ka kanuenimakanitau ishkuemat uenapissish kie ma mitshuap uenishk ka itutenan uenapissish e matshipaniti auen.

Tshipa tshi kie natueniten tshetshi minikuini « mashinaikan e uitakan tshetshi tshishpeutakuini uenishk », « mashinaikan e uitakan eka e tshi peshupammakuin » kie ma « mashinaikan uatamuakan tshetshi tshiam-inniuti ». Neni mashnaikana uitakanu anite e aikamiakan tshetshi nashaki e itashteniti mashinaikana tshetshi eka natu tutakuini tshin mak tshitauassimat. Miam mate, tshipa tshi itashteu ne mashinaikan apu tapuetuakan tshetshi peshuapamakuin nuash eshpan natuenituamakan kie ma tshetshi unuiti anite mitshuapit tshetsh tani ashit tshitauassimat.

Eka nashaki e itashtenit anite mashinaikanit, tshipa tshi nashuakanu kie ma tshipuakanu.

Ka pashishtak kie ma ka pashishtak e tshiam-inniunan tshetshi anu ui tshissenitam eshkueka minakan auen umashinaikan, tshipa uishamik tshetshi patshitiniman tshitaimun, kie kuatak auen. Tshika tshi tipatshimunau mamishkut tan ka ishpan. Apu apatshakan ka aimit patshitinameku tshitaimunuau, patush ui apatshieku, kamakunuesh kie tshika teu, tshka tshi uitamuau shetshishiumatshiuini.

Mitshet auenitshenat ka matshikaushiukatuakanitau shuk shuk ishinakuanu tshetshi animaniuitau tshetshi natuenitakau tshetshi uitshiakanitau. Apu ui utaimiatau uikanishuaua kie shuk shuk ishinakuanu tshetshi ishpenimutuatau tshetshi pakassiuaitau. Neni mashinaikana ka patshitinakanikau maim uenishk tshetshi uitshikuini, tshetshi eka peshuapamakuini mak tshetshi tshiam-inniuti tshika minu-apashtain tshin kie tshitauassimat.



TSHEKUAN TSHE ISHPAN KAMAKUNUESHT MAMISHIMATI AUENA KA MATSHIKAUSHIKATUT?

Makunakaniti auen ka matshikaushikatakuin tshipa tshi ishinakuanu tshetshi puniti nenu eshi-inniut. Put ma tshinapem kie ma tshuitamush apu tshissenitak meshta-matshi-aitun nenu eshi-inniut. Tshek ma makunakaniti tshika tshissenitam kamakunuesht nasham takuaikanu kie ishinakuanu tshetshi tshissenitaki uin tutatishu. Auenitshenat ka matshikaushikatuat kuataka tshipa ishinakuanu tshetshi nishtutakau **apu nita** minu-utinakan ka ishi-inniunan.

E makunakaniti auen apu nanitam aitishkamuakan ka tit, muk(u) ishinakuat tshetshi aitishkamuakaniti, tshika **nashuakanu** katshi matshikaushikatakuin. Tshipa tshi tipan ishinakuan takuaikan anite e aititanan assia, muk(u) tshekat kassinu peikutau ishi-takuaikanua anite ka tshitapakaniti.

Tshipa tshi put ishinakuan tshetshi peikuan shetshishiumatshuin, kie ma minekashish tshipa tshi shetshishiumatshiuin. Tshika ishinakuan tshetshi minu-mamitenitamini tshekuan tshe tutaman tshetshi eka tain anite e shetshishin tshin mak tshitauassimat. Anu tshika minuu tshetshi nanituapatamin mitshuap eka ka takuak matshikaushiun anite ka utishkueminan. Tshika tshi mashken uitshitun tshetshi mashkutinamin tshitinniuin tshetshi tain anite eka katukuak matshkaushiun.

Miam ishinakuat ne auen ka matshikaushiukatakuin tshetshi anuenimakan usham e tshi mashikakuin kie mashikuat tshitauassima, kie ma issishueti tapuenanu, ka ueueshtakan tshika anuenimeu. Put ma tshika nashuakanu shuniatat, kie ma ka nakatuenimakanu, tshika tshipuakanu kie ma mitshet tshekuanu tshika ishi-anuenimakanu. Tshe ishpish nakatuenimakan, tshipa tshi ishinakuanu tshetshi natuenitaki counseling ka inan tshetshi nashaki.

Tshe ishi-minakan anite e anuenimakan mitshet tshekuan tshika tshitapatakan : enush a kie ma shash tshi ishi-inniut e matshikaushit? Mishta shikatenitakuan a? Shetshishini, uitamu ka papatshishtaitshet kie ma anitshenat ka uauitshiatau neni ka matshikaushikatuakaniti. Ka ueueshtakan tshipa tshi ishinakuanu tshetshi itati auenuau ka matshikaushikatakuin tshekuanu tshe tutamaniti eshkueka unuitashinakan ne auen, miam mate tshetshi eka peshuapamakuini. Kie ma, shetshishini tshetshi nutepanini tshekuan e pakassiuin ashit tshitauassimat, tshipa tshi ishinakuan tshetshi tipan ishi-anuenimakaniti miam mate tshetshi shetshen atusseti eka e tshishikuakan.

Ishinakaniti tshetshi issishueti apu ut tutaman, tshika ishinakuan tshetshi patshitinamini tshitaimun ueueshiakaniti. Tshika tapuetakun tshetshi patshitinamini tshitaimun aku, anite tshika nukushin ka tshitapatakan kie ma tipan katshipaikanishit tshika anakun anite tshika nukuashin ka tshitapatakan apu tshikut tain anite e tanan apu tshikut peshuapamit auen ka matshikaushikatakuin tshe ishpish tipatshimuin tshekuan ka ishpan. Tshika tshi uitsheukuau auen e ishpenimutut, pessish tshika teu anite etain tshetshi minuenimuini tshe ishpish tipatshimuin ka ishpan.

Tshipa tshi pishakuan eshkueka pimipan ka ueueshtakan. Miam ishinakuaniti tshetshi itakaniti tshimatshi tuten, tshika anuenmakanu. Ka papatshishteitshet ka nashatshet tshipa tshi ishinakuanu tshetshi uauitamakuni tanite tshe itutein tshetshi uitshikuini anite ka tain, anite e apin kie tshika minu-uauitamak eshinakuat takuaikan anite ka apin.

Ka ueueshtakan issishuetai matshi-tutam, tshipa tshi ishinakuanu tshetshi anuenimakan anite matshima ka apit, eukuan ume e ishinikatakan « mashinaikan ka tutakan ka anuenimakan auen matshima ka tanan », nanikutini « uitshuat anuenimakanu ». Tshipa mitshet tshekuanu ishinakuanu tshetshi nashaki tshetshi tshin mak tshitauassimat eka natu-tieku, miam tshetshi tshiam-inniuti, tshetshi eka miniti kie ma utinaki kamatshikaunit, tshetshi pitukamit tati mak tshetshi eka peshuapamakuini. Nanitu-tshissenita pitama eshkueka pimipaniakan ka ueueshtakan tshekuan tshipa minuau tshetshi tutakaniti, kuetschim ka papatshishteitshet ka nashatshet kie ma auenitshenat ka uauitshiatau neni ka matshikaushiukatuakaniti.



TSHEKUANU TSHE ISHPANITAU NITAUASSIMAT ISHINAKUAKI TSHETSHI TSHITUTEIANI?

Ishinakuaki tshetshi tshituteni usham e matshikaushiukatakuin, tshika tshi natueniten tshin tshetshi kanuenimatau tshitauassimat. Apu tshikut unitau eka ut uitsheutau usham e tshi tshitutein ka ushamuin tshetshi eka natu tini.

Miam itenitamini kushtakuanu anite etatau nitauassimat, aimit kamakunueshiht, natuenitamut tshetshi uitsheukuini, tshin mak tshitauassimat, nuash anite tshe itutein mitshuapit eka tshe shetshishiumatshuin. Eka tshi tshituteitau tshitauassimat uitamut kamakuneushiht e kushtakuanit anite etatau tshitauassimat.

Ishpishini eshkueka nakatamin tshit, tshipa minuau aimit ka aimit tshekuan tshipa minuau tshetshi tutamani tshetshi tshishpeuatitau tshitauassimat kie tshin. Tshika tshi natuenitam mashinaikanu anite ka ueeshtakanit tshin tshe kanuenimatau tshitauassimat kie ma mashinaikan e uitakan tshin an uikanishimau.

Shetshishieku tshetshi natu titau tshitauassimat, tshikaaiminuau tshika tshi natuenitamueu ka pashishtiminiti tshetshi patshinak mashinaikanu e uitamuakan tshinapem kie ma tshuitamush tshetshi uapamat utauassima patush taniti auenua uapamati kie ma tshetshi eka nasht uapamat. Ka pashistik tshika minumamitunenimeu auassa eshkueka patshitinik utaimun. Eka nita unitshissita apu nita shuk ishinakuat ka pashistik tshetshi eka tapuetaki tshetshi eka uapamat auen utauassima miam utaumuau kie ma ukaumuau. At shuk eka nakatuenimakan uapamati utauassima, tshika tshi uitsheukuau auen ituteitau kie natuapamatau tshitauassimat tshetshi eka matshipaniti.

Tshetshi eka natu tini tshin kie tshitauassimat eukuan ushkat eshpitenitakuat. Eka ta anite e kushtakuat usham apu tshissenitamin kie usham tshishetshishin tshetshi eka tshi pakassiuaitau tshitauassimat. Tshika tshi uitshikun anite ka kanuenimakanitau ishkueuat tshin kie tshitauassimat tshetshi nanituapatamin tshekuan tshe tutamin tshetshi minu-apieku. Tshikaaimishimuau tshika natuenitamueu ka pashishtiminiti tshetshi natuenitamuati tshetshi uitshikuieku tshinapem kie ma tshuitamush anite shuniatat tshin mak tshitauassimat.

Miam ishinakuaki tshetshi kanuenitamini mashinaikan e uitakan anite tshin e kanuenimatau tshitauassimat kie ma tshin an uikanishimau, tshipa minuau kanuenitamin ne mashinaikan miam ishinakuaki tshetshi matshipan. Tshika tshi patshitinenau ne mashinaikan e akunitshepanitakan anite katshishkutamatshetshuapit kie ma anite ka kanuenimakanitau auassat.

Ishinakuaki tshetshi shetshishni tshetshi uikanisha utinaniti kie ma kuatak auen tshetshi kutshipanitati tshetshi utinati tshitauassima tshetshi tshitutiat upime ka apin kie ma tshetshi itutiati ait-assit, uitamu tshikaaimishim. Ka pashistik tshika patshitinam aimunu mak mashinaikanu anite uatakan apu tshi utinatau tshitauassima kie ma kuatak auen apu tshi utinat anite ka taniti (utenat, e pakuenikan assi, kuatak assi kie ait-assit Canada). Tshipa tshi natuenitam anite mashinaikanit tshetshi patshitinikaniti umashinaikanuau ka tapuetakan

tshetshi ait-assit itutenanuti, tshetshi ka nuenitakaniti anite ka ueueshtakan. Anu ui tshissenitamini tshekuan e tutakan shetshishini tshetshi itutiakanitau tshitaauassimat ait-assit mak at ute Canada (ka tshimutinan auassat mashue eshipitashkamikat assi) ute natshi-uapata : <https://voyage.gc.ca/assistance/info-d-urgence/enfants-enlevements-problemes-de-garde/> / <https://travel.gc.ca/assistance/emergency-info/child-abduction-welfare>.

TANITE NIPA TSHI MASHKEN SHUTSHIUN MAK SHUSHTEIEUN TSHETSHI TSHITUTEIANI?

shkueu ka ushamuitishut anite matshikaushiun ka tat uitamupan ka tapuenanunit mak tan eshi-nishtutak :« [MISHTIKUSHIU-ASHU-ASHTAKANIPAN] Anu e tshishkutamakushiaku, anu tshiminu-tshissenitenan tshekuan kie tshetshi tshissenitenan ussi-tshekuana, anu minupanu tshetshi minu-ueuetinamaku tshitinniunu ». Kie issishuepan nasht e ui tapuet minuanishapan ka tshishkutamuakan, anu kue tshi tshissenitak tshekuanu, kie anu ekue tshissenitak anite e ishi-innut mak utinnu-aitun, eukuano ka uitshikut tshetshi mashakaki shutshishiunu tshetshi itsheuiti anite ka tat e matshikaushinan kie ka utinak utinniun tshetshi anu minuashiniti. Kau ekue tshissintak umushuma kie ukuma ka ishi-tshishkutamakuat mak e natutak ka issishueniti tshiashinnua nanitam ka issishuetau tshekuan e tutakan tshetshi minuashit inniun.

Matshikaushiukatakuin kie ma e tshi matshikaushiukutakuin kie ma e tshi nekatshikuin, manenimakuin, shuk ui tshissita **tshitinniun tshuitshikuan**. Eukuata anite tekuak tshishutshishiun!

Animanuini tshetshi tshissenitamani tshekuan tshe tutamin kie uanenitamani, tshishat tshika tshi tshitshipan tshekuan tshipa tuten tshetshi mashat tshishutshishiun mak tshishushteieun.

Mitshet tshekuan tshika tshi tuten tshetshi shutshiumatshuini, tapuetashuni kie shutshenamitishuin.

- Aimi auen ka shutshenimat kie katshi ishpenimutut. Apu nikut eka nutam uitameku, uita neni tshekuana eka ka shakuenamuin tshetshi uitamani.
- Tshekat mashue anite ka tanan, takuana tshekuana tshetshi minuatakan, takuan kakussikuashunan, uikanishimauat ka utauassimitau, natshishkatuna tshetshi punanuti e minan kie ma ka uitshiakan auen ka uitamat ka miniti, ka tshisheniutau e tshishkutamuakanitau, uitsheuakanitshuapa mak mashinaikana ka tshitapakaniti. Eukuata anite tshipa tshi mashken tshetshi ashteieshkushiuinitishin anite mamitenitamikuin tshekuan, ka ushtuenitamikuin tshekuan, ka shetshishin mak ka shikatenamuin. Tshiueni anu tshika shutshishiumatshun mak anu tshika minuaititishun.
- Unui eka pitukamit ta, e peikussin kie ma e uitsheutau tshitaauassimat kie ma tshuitsheuakanat kie ma tshikanishat anitshenat ka shutshenamitau. Anu

shushteienu auen inanu uenuiti uenipassish, upime e ituteti, kau takuan pakushinitamuna kie mashkam auen tshiam-inniu. Tshipa tshi « kau auen tapishamitishu ».

- Mitshet auenitshenat mashkamuat anite ka e natakau utshiashi-aiamiunuau miam mate e piputuētishutau, aiamiun, ka uauēiat natushiun e itutenan mak e natshi-aiamianan mashkamuat anite shutshishiunu ekue kau tshikanikau utinniunuau anite eshanit ekue eka unipanitau ka ishi-naushunitau.
- Itenitamani nitanimikuin kamatshikaut e utinaman, tshika tshi nanitu-tshissenitenau anite ka uauitshiuēt auen anite kamatshikaunit kie tshika tshi natuenitamaua tanite tshipa tshi itutenau tshetshi uitshikuieku tshetshi punitaieku e tashikamek(u).

Eka tshi itieku tshetshi mishkutanameku tshitinniunuau e uitshitishuieku, tshissituekuat tshitauassimuauat, utinniunuau mak anite nikan utinniunuau. Maim ishkuēu ka issishuet [Mishtikushiu-ashu-ashtakanipan] :


« Nitaussimat nuitshikuat tshetshi shaputueteian.

Miam auass ka utinamuat ukauia utitshinua.

Tshuitshikuanuat tshetshi minu-mamitunenitamaku.

Ekue tshitapatamak anite nikan. »





**E minutain eshi-inniuin mak
e minutauat tshitaussimat
utinniunuau metikat tshituten.**

UAUITAKANUA APISSHISH UTE ESSISHUENAN MASHINAIKANISSIT

Akua ma : Ute tshe uauitakaniti tshipa tshi uitshikunau. Mishkut namieu e uitakaniti essishuemakaki ueueshtakanu–aimuna nutam essishuemakaki, muk(u) uauitakanua anu neni ka uauitakaniti. Anu ui minu–tshissenitameku essishuemakaki, ishinakuan tshetshi aimieku tshikaimishimuau kie mashetshen ka uauitshiuet ka aimit.

mashikaushiun

Takuan mashikaushiun miam auen apashtati kie ma ua shetshiati auenua miam ua utamuati eka e tapuetaminiti nenua. E tapuetaki auen usham tshika matshikaushikatuakanu kie ma aikamiakanu namieu ne tapuetamun.

eshi–minakan auen ka ueeshiakan

Ka pashishtik essishueti matshi–tutamauen katshi aיתי eka minuanit tshekuanu, natuenitam tshetshi tshipuakaniti nenua ka matshi–tutaminiti, tutam mashinaikanu tshetshi nakatuenamitishuti, kie ma tshika enuenimakanu anite matshima ka apit, mashinaikanu tutam tshetshi anuenimakan anite ka tanan. Auen e anuenimakan anite ka tanan, tutakanua tshekuana tshe nashik, miam tshetshi eka unuiti anite uitshuat, patush uauenapissish eshikam tshishikua kie ma patush uemut ishinakuaniti ka tutak, eukuan ka issishuenan « tshipuakanu auen uitshit ». Ka pashishtik tshipa tshi kie natuenitam tshetshi shetshen atusseti anite ka tanan, miam matshi uauitshiat Tshishenua.

tshetshi tshiam–inniuan anite ka tanan

Shetshiumatshiuini, tshipa tshi natuenitenua tshetshi ne ka matshi–tutak tshiam–inniut anite ka tanan. Eukuan ne mashinaikan ka patshitinakan anite e uitak ka ueueshtakan tshekuanu tshe nashik ne ka matshi–tutak, kie tshika ishinakuanu tshetshi nashaki. Miammate, tshipa tshi tshitaimuakanu tshetshi eka peshuapamakuini, tshetshi mashinaimakuini kie ma tshetshi aimikuini. Eka nashaki, kamakunuesht tshika nakaneu. Anui ui tshissenitamin eshinakuat tshetshi nashakaniti, tshika tshi kukutshimauat kamakunueshiht kie kaaimit.

nanitu–tshissenitamun shuniatat tshetshi unuitishinakaniti

Ka tutakan anite ka ueueshtakan katshi makunakanit auen mak ka ish–itashkamuakan auen. Ka ueueshtakan ui tapuetam tshetshi unuitishinakaniti patush katshi minati tshekuanu tshe nashaminiti, miam mate tshetshi eka peshuapamakuini. Tshipa tshi kie ka pashishtik eka tapuetam tshetshi unuitishinakaniti, tshetshi tshipuakaniti nuash e ueeshiakan tshekuanu ka itashkamuakan. E unuitishinakuan auen shunianu ka natuenitamuakan tshetshi unuiti eukuan ka ishinikatet « unuitishinakanu uenapissish pitama ».

ka paminashatshet

Shetshiumatshiuini usham nanitam tshipaminashak(u) auen kie ma tshui uapamik eka e tapuetamin, kie ma tshitshimutapamik kie ma tshimatauenimau anite etat kie ma etat tshitauassimat etaniti, tshipa tshi ishinakuanu ne auen tshetshi matshi–tutaki, eukuan eshinikatakan « ka paminashatshet ».

mashinaikan ka nashakan auassat e kanuenimakanitau (kie ma mashinaikan uatakan auen uikanishimau)

Tshin kanuenimatau tshitauassimat, tshin an ishinakuan tshetshi minuat tshekuanu tshe tutamin anite tshitauassimit (miam mate anite e tshishkutamuakanitau mak

eshi-upanakanitau). Tshin e kanuenimatau tshitauassimat, tshin tshuitapamakuat, tshipa tshi ishinakuanu tshetshi uapamatau nanikutini utauiau. Tshipa tshi ishinakuan tshin e peikussin kanuenimatau, kie peik(u) uikanishimau ishinakuanu uin tshetshi utinaki tshekuanu tshe tutak tshetshi minu-apiniti utauassima, kie ma tshipa tshi ishinakuan tshetshi mishkunamatishunan e kanuenimakanitau, kie ma e nishitau uikanishimauat utinamuat tshekuan tshe tutakan tshetshi minu-apitau auassat. Tshipa tshi ishinakuan tshetshi tipan issishuenan ne « mashinaikan auen uikanishimau » ait. Mashinaikan ka uitakan auen uikanishimau tshekuan tshe tutakan tshetshi minu-apitau auassat kie tan tshe ishi-tipanikan uapamatau auassat uikanishuaua.

ka ueueshtakan umashinaikan

Ishinakuat tshetshi shetshiumatshuini, eka ui uitamutau kamakunueshiht tshika natuenitanu mashinaikan tshetshi tutaki ka ueueshtakan kie ma tshetshi tutak mashinaikanu ka tshishpeuatau ka utishkueminiti eka e tapuetuakan auen ka matshikaushikatakuin tshetshi peshuapamakuini eukan ka ishinikatet « mashinaikan anite ka uitakan tshetshi eka peshuapamakan auen ». Tshika ishinakuan tshetshi ituteni anite ka uitshiuenan ka ueueshtakan tshetshi tshissenitakan tan uaishinakuanikau mashinaikana kie tan eshi-natuenitakaniti anite mashinaikanit anite ka tanan kie ma anite ka utishkuemit tshetshi minakuiek(u) anite tshinuau ka apieku(u), ka taiek(u) tshipa minu-apashtanau. Neni mashinaikana tshetshi tshishpeuatakan auen kie ma ka utishkuemit kie ma « mashinaikan uatakan uenishk auen tshetshi uitshiakaniti » anite utenat ka tanan natuapatakanua, mashue takuana anite e pakuenikaniti assia, tshiam assi, uinuau ka tutakau takuaikanu tshe nashikan miam matshikaushiukatuakaniti ka utishkuemit. Tshipa tshi tutam tshetshi taniti e peikussishiniti anite tshitshit (e peikussit ka matshikaushiukatuakaniti mak utauassiminuau, mauat uin ne ka matshi-tutak), tshika tshi unuitashauenu nenua ka matshi-tutaminiti, kie uitam tan tshe ishpish tshi uapamat kie tshika tipaimueu nutam. Tshika ishinakuan tshetshi ituteni anite ka tutakaniti mashinaikana kie aiashi-natuenitakaniti tshetshi nashakaniti tshetshi tshishpeuatakanitau ka utishkuemitau anite e pakuenikan eshpitashkamikat tshitassi kie ma tshiam assi ka tain anite ka ishi-tshitapamakuin.

ka nakatuenimakan auen ka matshi-tutak

Ne mashinaikan ka nashakan anite patshitinakanu ka ueueshtakan ka matshi-aitinan, tshipa tshi ishinakuan tshetshi ashu-ashtakanit anite eshi-natuenitamuakan auen ka matshi-tutak. Auen ka minakan nenu mashinaikanu tshetshi nashaki tshipa tshi ishinakuanu tshetshi natuenitamuakan tshekuan tshe tutak tshekuan tshe nashik, miam mate tshipa tshi natuenitamuakanu tshetshi ituteti anite counseling ka inan.

ka papatshishteitshet ka nashatshet

Kaamit an (« ka papatshishteitshet » nanikutini ishinikatanu kie ma « ka aimuatamuat anite tshishe-utshimatat auenua », uin ukupaniemitaku tshishe-utshimau (« la couronne » ka inan ». Mishta matshi-aitun katshi tutakaniti, ka papatshishteitshet ka nashatshet patshitinam ka tapuenanit kie ma uishameu auenua ka uapatsheniti tshetshi minati aimun ka pashishtaminiti. Auen ka nashuakan kie ma ka nakanakan kie uin tshika tenua ukaaimishima ka ishinikatakanit « kaamit ka tshishpeuatat auenua » kie ma « ka papatshishteitshet ka tshishpeuatat auenua ».

